

**Fitting Instructions:**  
**Tiger (1050cc)**  
**Grab Rail Kit - A9758096**



**! Warning**

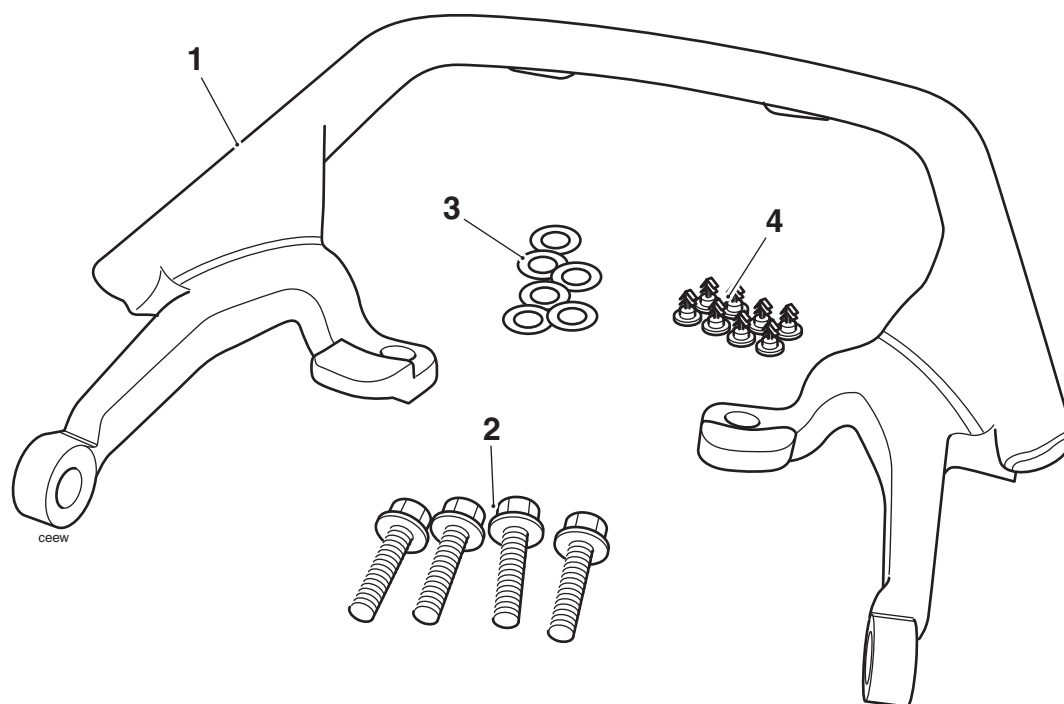
Always have Triumph approved parts, accessories and conversions fitted by a trained technician of an authorised Triumph dealer. The fitment of parts, accessories and conversions by a technician who is not of an authorised Triumph dealer may affect the handling, stability or other aspects of the motorcycles operation which may result in loss of motorcycle control and an accident.

**! Warning**

This accessory kit is designed for use on Triumph Tiger (1050 cc) motorcycles only and should not be fitted to any other Triumph model or to any other manufacturers motorcycle. Fitting this accessory kit to any other Triumph model, or to any other manufacturers motorcycle, may interfere with the rider and could affect the stability and handling of the motorcycle leading to loss of control and an accident.

**! Warning**

Throughout this operation, ensure that the motorcycle is stabilised and adequately supported to prevent risk of injury from the motorcycle falling.



**Parts Supplied:**

**1. Grab rail . . . . . 1 off**  
**2. Bolt, M8 x 30 mm . . . . . 4 off**

**3. Shims . . . . . 6 off**  
**4. Plastic bungs. . . . . 8 off**



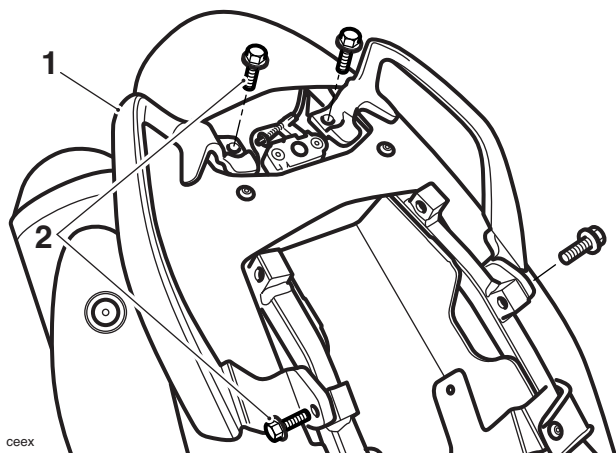
## Warning

Failure to tighten any of the fasteners to the correct torque specification may result in loss of motorcycle control and an accident. Always use a calibrated torque wrench.

### NOTE

- **Completely read all the instructions before commencing the installation of this accessory kit in order to become thoroughly familiar with the kit features and the installation process.**

1. Position the motorcycle on a paddock stand.
2. Remove the seat and disconnect the battery, negative (black) lead first.
3. Remove the fixings securing the grab handles to the motorcycle and remove the grab handles.
5. Install the M8 x 30 mm bolts to the two rear-most mounting holes. Do not tighten the bolts at this stage.



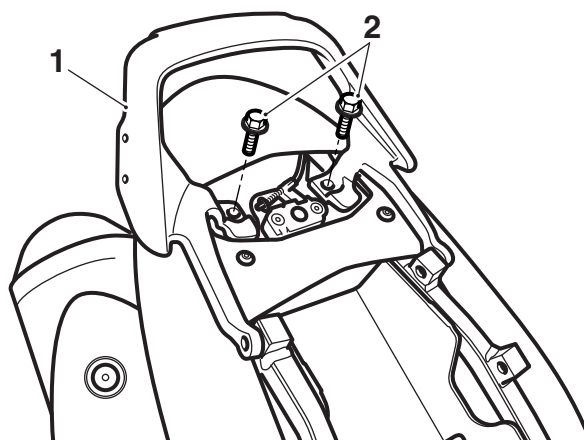
1. Grab handles

2. Fixings

### NOTE

- **Retain the grab handles and fixings for use if the motorcycle is returned to original condition.**

4. Recover the grab rail from the kit and align to the motorcycle.



1. Grab rail

2. Fixings



## Warning

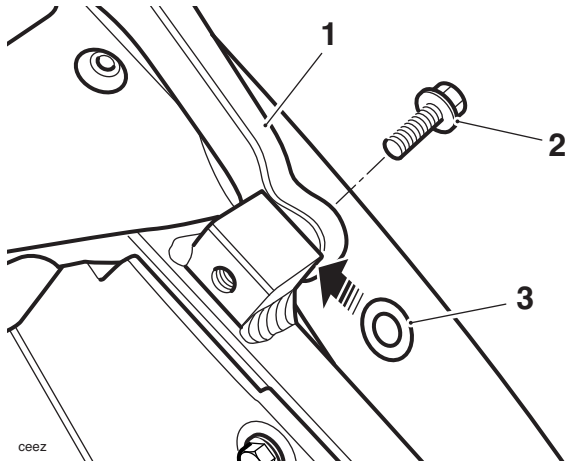
Due to manufacturing tolerances between the subframe and grab rail it is necessary to insert shims between the forward mounting of the grab rail and the subframe. Failure to install the shims will result in damage to the grab rail, leading to loss of motorcycle control and an accident.

6. Recover the six shims from the kit. Centralise the grab handle forward mountings to the subframe, and insert as many shims as possible, without using undue force, equally between both sides of the grab rail forward mounting and the subframe lugs.

### NOTE

- **If an even number of shims is required, install an equal number of shims on both sides of the motorcycle.**
- **If an odd number of shims is required, the additional shim can be added to either side of the motorcycle.**

7. Install the front grab rail mounting bolts and tighten to **27 Nm**.



- 1. Grab rail**  
**2. M8 x 30 mm bolts**  
**3. Shims**

8. Tighten the rear grab rail mounting bolts to **27 Nm**.
9. If the pannier kit is not to be fitted, insert the four plastic bungs into the threaded holes on the grab rail outer side faces (2 each side).
10. If the rack kit is not to be fitted, insert the four plastic bungs into the threaded holes on the grab rail underside (2 each side).
11. Reconnect the battery, positive (red) lead first.
12. Refit the seat.



## Warning

After fitting the accessory kit the motorcycle will exhibit new handling characteristics. Operate the motorcycle in a safe area free from traffic to gain familiarity with any new handling characteristics. Operation of the motorcycle when not familiar with any new handling characteristics may result in loss of motorcycle control and an accident.



## Warning

If, after fitment of the accessory kit, there is any doubt as to any aspect of the performance of the motorcycle, contact an authorised Triumph dealer and do not ride the motorcycle until the authorised dealer has declared it fit for use. Riding a motorcycle when there is any doubt as to any aspect of the performance of the motorcycle may result in loss of control of the motorcycle leading to loss of motorcycle control and an accident.



## Warning

Never ride an accessory equipped motorcycle (including those fitted with Triumph approved windscreens and luggage systems) at speeds above 80 mph (130 k/mh).

The presence of accessories such as windscreens and luggage systems will cause changes in the stability and handling of the motorcycle. Failure to allow for changes in motorcycle stability may lead to loss of control or an accident.

Remember that the 80 mph (130 k/mh) limit will be reduced by the fitting of non-approved accessories, incorrect loading, worn tyres, overall motorcycle condition and poor road or weather conditions.



## Warning

This motorcycle must not be operated above the legal road speed limit except in authorised closed-course conditions.



## Warning

Only operate this Triumph motorcycle at high speed in closed-course on-road competition or on closed-course racetracks. High-speed operation should only then be attempted by riders who have been instructed in the techniques necessary for high speed riding and are familiar with the motorcycle's characteristics in all conditions.

High-speed operation in any other circumstances is dangerous and will lead to loss of motorcycle control and an accident.