

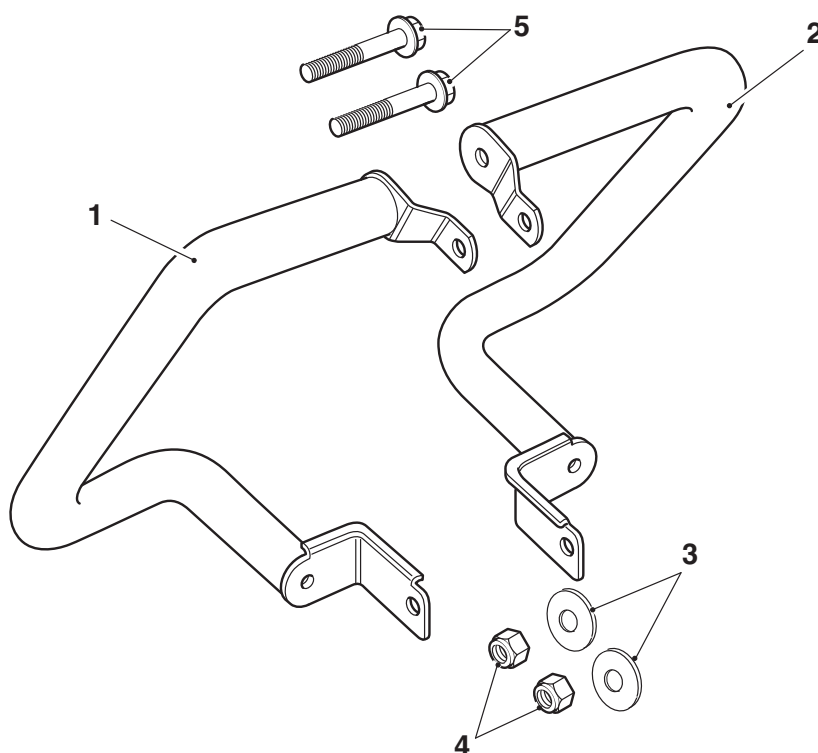
---

**Fitting Instruction:****Rocket III****Rear Dresser Bar Kit - A9758047**

Thank you for choosing this Triumph genuine accessory kit. This accessory kit is the product of Triumph's use of proven engineering, exhaustive testing, and continuous striving for superior reliability, safety and performance.

Completely read all of these instructions before commencing the installation of the accessory kit in order to become thoroughly familiar with the kit's features and the installation process.

These instructions should be considered a permanent part of your accessory kit, and should remain with it even if your accessory equipped motorcycle is subsequently sold.

**Parts Supplied:**

|                                 |       |                  |       |
|---------------------------------|-------|------------------|-------|
| 1. Rear dresser bar, right hand | 1 off | 4. Locknut, M8   | 2 off |
| 2. Rear dresser bar, left hand  | 1 off | 5. Bolt, M8 x 20 | 2 off |
| 3. Washer, M8                   | 2 off |                  |       |



### **Warning**

This accessory kit is designed for use on Triumph Rocket III motorcycles only. This accessory kit should not be fitted to any other manufacturer's motorcycle. Fitting this accessory kit to any other manufacturer's motorcycle will affect the performance, stability and handling of the motorcycle. This may affect the riders ability to control the motorcycle and could cause an accident.

### **Warning**

Always have Triumph approved parts, accessories and conversions fitted by a trained technician of an authorised Triumph dealer. The fitment of parts, accessories and conversions by a technician who is not of an authorised Triumph dealer may affect the handling, stability or other aspects of the motorcycle's operation which may result in loss of motorcycle control and an accident.

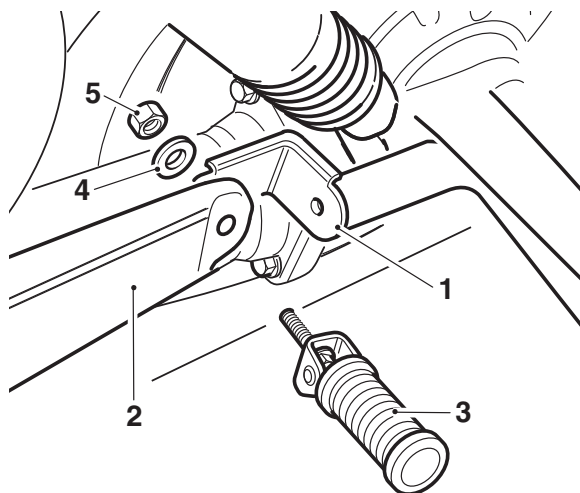
### **Warning**

Throughout this operation, ensure that the motorcycle is stabilised and adequately supported to prevent risk of injury from the motorcycle falling.

### **Warning**

A torque wrench of known accurate calibration must be used when fitting this accessory kit. Failure to tighten any of the fasteners to the correct torque specification may result in loss of motorcycle control and an accident.

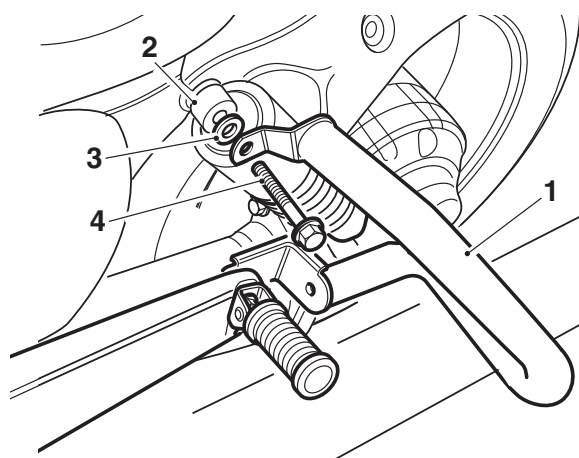
1. Raise and support the rear of the motorcycle such that the rear wheel is just off the ground.
2. Remove the nut securing the left hand rear footrest to its mounting point. The original nut must not be re-used, a new nut must be fitted if the motorcycle is returned to its original condition.
3. Remove the bolt and washer from the left hand upper rear suspension unit. Discard the bolt. Retain the washer for re-use in step 5.
4. Position the left hand rear dresser bar to the motorcycle, locating the lower mounting bracket inboard of the outrigger. Loosely secure the footrest and the dresser bar to the footrest mounting point with the M8 washer and locknut from the kit.



1. Lower mounting bracket, dresser bar
2. Outrigger, left hand
3. Footrest
4. Washer, M8
5. Locknut, M8



5. Align the dresser bar to the rear suspension unit upper mount. Position the original washer, retained from step 3, between the dresser bar and suspension mounting point and secure with the new bolt from the kit.  
Tighten the bolt to **27 Nm**.



1. **Dresser bar**
2. **Rear suspension upper mount**
3. **Washer**
4. **Bolt, M8 x 20**
6. Tighten the M8 locknut securing the footrest to **27 Nm**.
7. Repeat steps 2 to 6 for the right hand rear dresser bar.
8. Lower the rear of the motorcycle to the ground.

### **Warning**

If, after fitment of this accessory kit, you have any doubt about the performance of any aspect of the motorcycle, contact an authorised Triumph dealer and do not ride the motorcycle until the authorised dealer has declared it fit for use. Riding a motorcycle when there is any doubt as to any aspect of the performance of the motorcycle may result in loss of control of the motorcycle leading to an accident.

### **Warning**

The rear dresser bar kit is not designed to provide protection in the event of a collision with another vehicle, the road or any other object. When riding a motorcycle both rider and passenger must always wear a crash helmet, eye protection, gloves, boots and trousers (close fitting around the knee and ankle). Although full protection is not possible, wearing correct protective clothing can reduce the risk of injury when riding.

### **Warning**

After fitting the accessory kit the motorcycle will exhibit new handling characteristics. Operate the motorcycle in a safe area free from traffic to gain familiarity with any new characteristics. Operation of the motorcycle when not familiar with any new handling characteristics may result in loss of motorcycle control and an accident.





### Warning

Never ride an accessory equipped motorcycle at speeds above 80 mph (130 km/h).

The presence of accessories will cause changes in the stability and handling of the motorcycle. Failure to allow for changes in motorcycle stability may lead to loss of control or an accident. Remember that the 80 mph (130 km/h) limit will be reduced by the fitting of non-approved accessories, incorrect loading, worn tyres, overall motorcycle condition and poor road or weather conditions.



### Warning

Only operate this Triumph motorcycle at high speed in closed-course on road competition or on closed-course racetracks. High speed operation should only be attempted by riders who have been instructed in the techniques necessary for high speed riding and are familiar with the motorcycle's characteristics in all conditions.

High speed operation in any other circumstances is dangerous and will lead to loss of motorcycle control and an accident.



### Warning

The motorcycle must not be operated above the legal road speed limit except in closed-course conditions.