

English

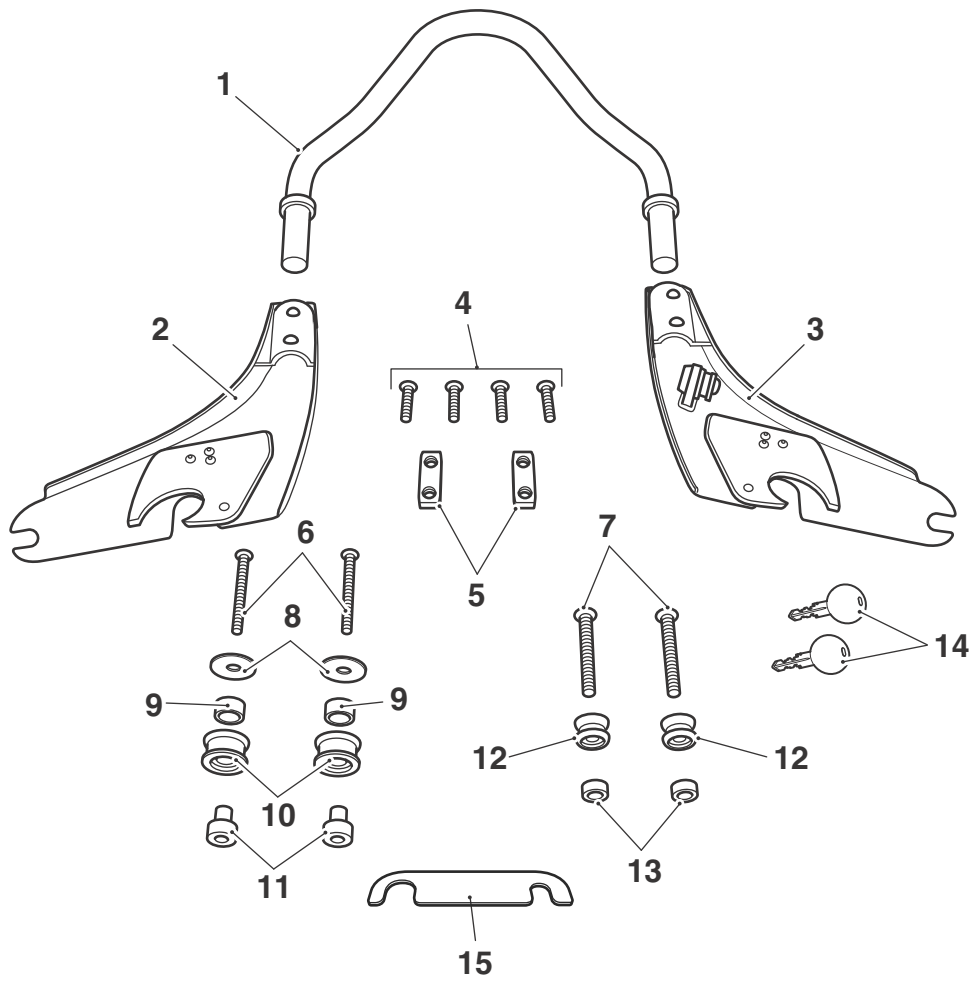
Fitting Instructions:
Thunderbird
A9750516

Thank you for choosing this Triumph genuine accessory kit. This accessory kit is the product of Triumph's use of proven engineering, exhaustive testing, and continuous striving for superior reliability, safety and performance.

Completely read all of these instructions before commencing the installation of the accessory kit in order to become thoroughly familiar with the kit's features and the installation process.

These instructions should be considered a permanent part of your accessory kit, and should remain with it even if your accessory-equipped motorcycle is subsequently sold.

A9750516



cfrd

Parts Supplied:

1. Sissy bar	1 off	9. Plastic bush	2 off
2. Mounting plate, right hand side	1 off	10. Large mounting	2 off
3. Mounting plate, left hand side	1 off	11. Shouldered spacer	2 off
4. Bolt, M8 x 30 mm	4 off	12. Small mounting	2 off
5. Clamp plate	2 off	13. Spacer	2 off
6. Bolt, M8 x 60 mm	2 off	14. Key	2 off
7. Bolt, M10 x 60 mm	2 off	15. Gauge	1 off
8. Finisher	2 off		



Warning

This accessory kit is designed for use on Triumph Thunderbird motorcycles only and should not be fitted to any other manufacturer's motorcycle. Fitting this accessory kit to any other manufacturer's motorcycle will affect the performance, stability and handling of the motorcycle. This may affect the rider's ability to control the motorcycle and could cause an accident.



Warning

Always have Triumph approved parts, accessories and conversions fitted by a trained technician of an authorised Triumph dealer. The fitment of parts, accessories and conversions by a technician who is not of an authorised Triumph dealer may affect the handling, stability or other aspects of the motorcycle's operation which may result in loss of motorcycle control and an accident.



Warning

Throughout this operation, ensure that the motorcycle is stabilised and adequately supported to prevent risk of injury from the motorcycle falling.



Warning

A torque wrench of known accurate calibration must be used when fitting this accessory kit. Failure to tighten any of the fasteners to the correct torque specification may result in loss of motorcycle control and an accident.

Note:

- **The gauge in this kit is used to align the large and small mountings and should be considered a permanent part of your accessory kit. It should remain with the kit even if your accessory-equipped motorcycle is subsequently sold.**

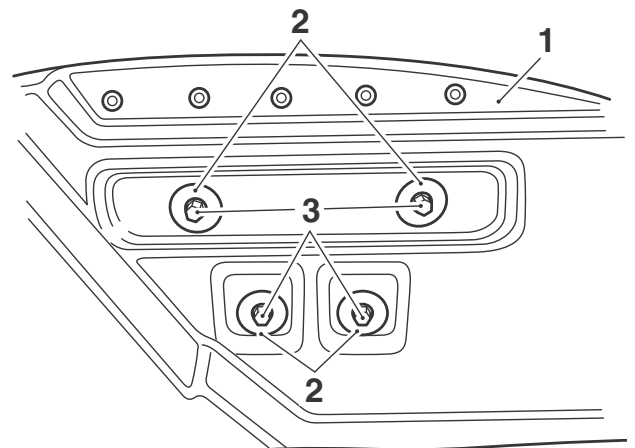
1. Remove the seat, as described in the service manual.

Note:

- **For motorcycles with the pannier mounting kit - A9528030 fitted, continue from step 2 to step 15. Then continue from step 21.**
- **For motorcycles without the pannier mounting kit fitted continue from step 16.**

Motorcycles Fitted with the Pannier Mounting Kit - A9528030

2. Remove the left hand pannier. Retain the bolts for reuse.

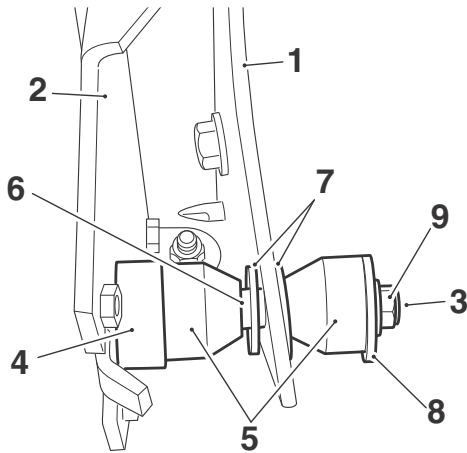


cfql

1. Pannier
2. Flanged sleeves
3. Bolts

3. Remove the bolt, locknut and rubber dampers from the pannier mounting assembly. Collect the following:

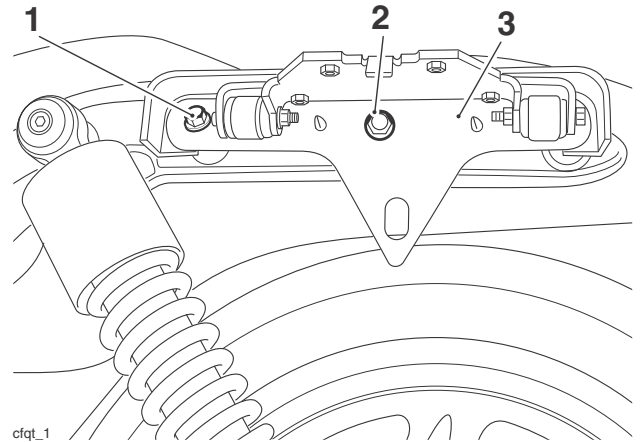
- Locknut;
- Bolt;
- Spacer;
- Two rubber dampers;
- Sleeve;
- Two washers;
- M6 washer.



cfqu_1

1. Inner pannier mounting
2. Outer pannier mounting
3. Bolt
4. Spacer
5. Rubber dampers
6. Sleeve
7. Washers
8. Washer, M6
9. Locknut

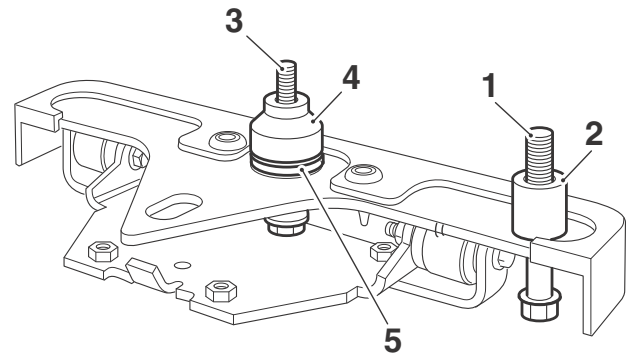
4. Remove the two bolts and the pannier mounting assembly.



cfqt_1

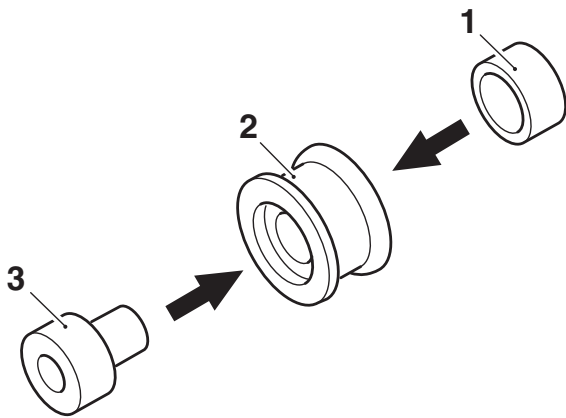
1. Bolt, M10
2. Bolt, M8
3. Pannier mounting assembly

5. Remove all the spacers from the M8 and M10 bolts.
6. Retain the spacers if the pannier mounting assembly is to be returned to its original condition.



1. M10 bolt
2. Spacer
3. M8 bolt
4. Tapered spacer
5. Spacer (if fitted)

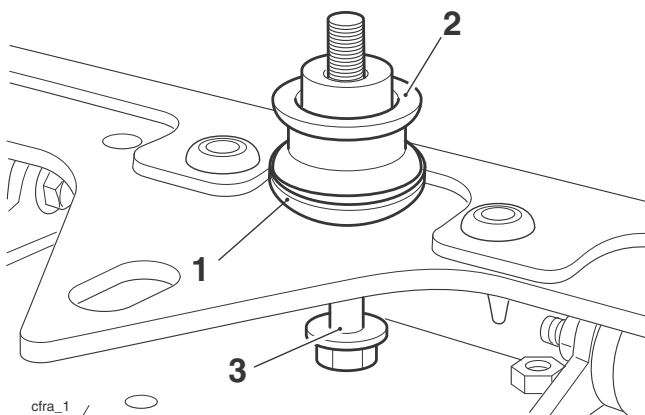
7. Fit the plastic bush into the larger recess in the large mounting. Then invert the mounting and fit the shouldered spacer into the mounting and plastic bush as shown below.



cfqs_1

- 1. Plastic bush
- 2. Large mounting
- 3. Shouldered spacer

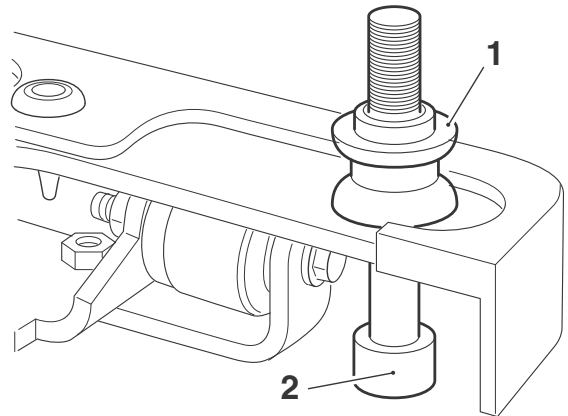
8. Fit the large mounting and a finisher to the M8 bolt as shown below.



cfra_1 /

- 1. Finisher
- 2. Large mounting
- 3. M8 bolt

9. Fit the small mounting and the spacer to the M10 bolt, as shown below.



cfra_2

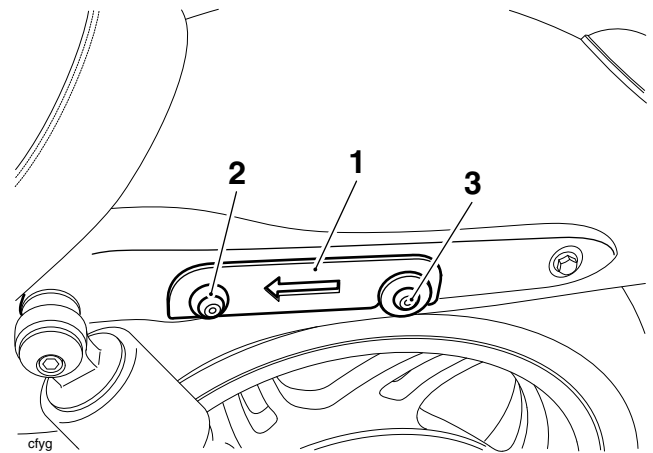
- 1. Small mounting
- 2. M10 bolt

10. Fit the left hand pannier mounting to the motorcycle. Do not fully tighten the bolts at this stage.

11. Fit the gauge from the kit to the large and small mountings.

Tighten the M10 bolt to **45 Nm**.

Tighten the M8 bolt to **26 Nm**.

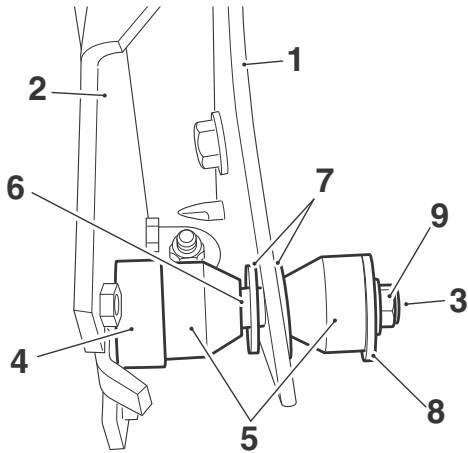


cfyg

- 1. Gauge (shown with the pannier mounting removed)
- 2. Small mounting
- 3. Large mounting

12. Remove the gauge. Retain the gauge for re-use.

- Fit the bolt, spacer, the two rubber dampers, the sleeve, two washers, the M6 washer and the locknut to the pannier mounting assembly, as shown below.



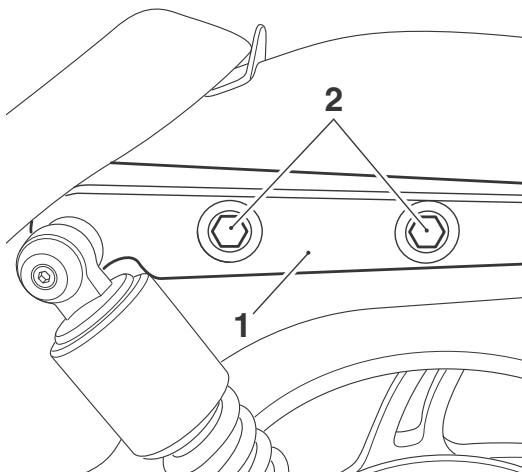
cfqu_1

- Inner pannier mounting
- Outer pannier mounting
- Bolt
- Spacer
- Rubber dampers
- Sleeve
- Washers
- Washer, M6
- Locknut

- Tighten the locknut to **10 Nm**.
- Refit the pannier and tighten the bolts to **10 Nm**.
- Repeat steps 2 to 15 for the right hand side.

Motorcycles without the Pannier Mounting Kit - A9528030 Fitted

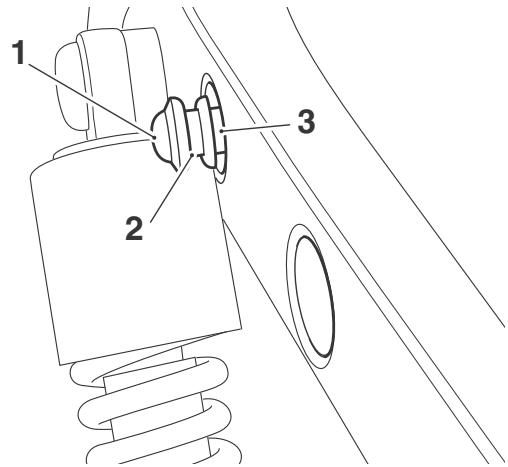
- Working on the left hand side, remove the two front bolts and washers securing the rear mudguard side cover. Retain the bolts and washers if the motorcycle is to be returned to its original condition.



cfqr

- Side cover
- Bolts

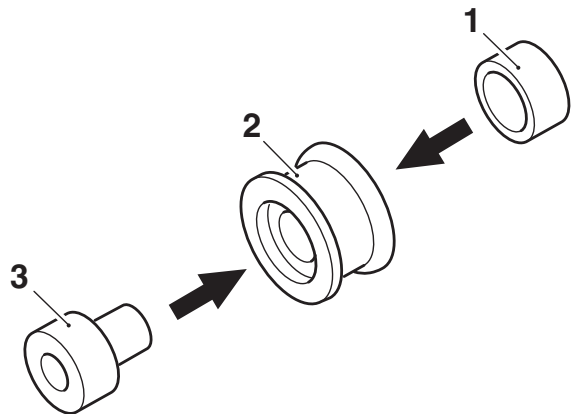
- Fit the small mounting, spacer and M10 x 60 mm bolt to the front mounting hole in the rear mudguard. Do not fully tighten the bolt at this stage.



cfre_1

- Bolt, M10 x 60 mm
- Mounting, small
- Spacer

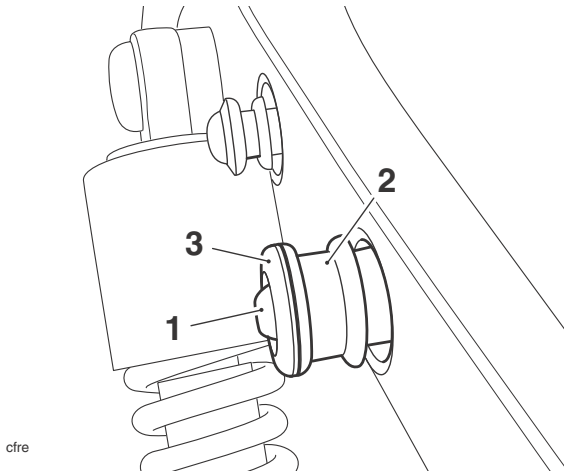
- Fit the plastic bush into the larger recess in the large mounting. Then invert the mounting and fit the shouldered spacer into the mounting and plastic bush as shown below.



cfqs_1

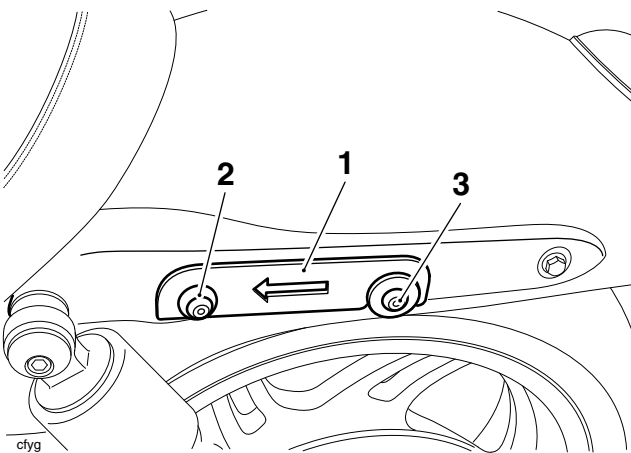
- Plastic bush
- Large mounting
- Shouldered spacer

20. Fit the large mounting, M8 x 60 mm bolt and a finisher to the centre mounting hole of the rear mudguard. Do not fully tighten the bolt at this stage.



- 1. Bolt, M8 x 60 mm**
2. Large mounting, assembled
3. Finisher

21. Fit the gauge from the kit to the large and small mountings. Tighten the M10 bolt to **45 Nm**. Tighten the M8 bolt to **26 Nm**.



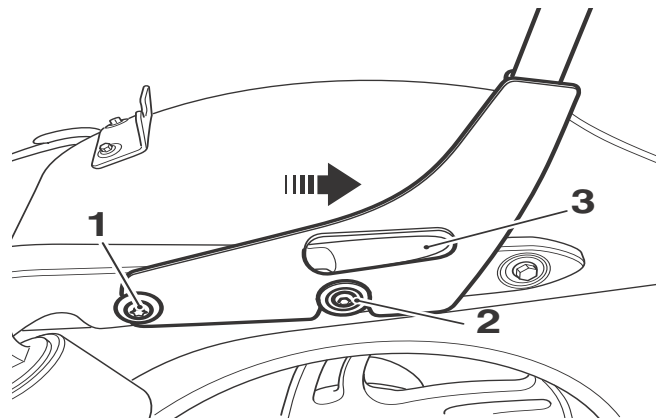
- 1. Gauge**
2. Small mounting
3. Large mounting

22. Remove the gauge. Retain the gauge for re-use.
 23. Repeat steps 17 to 22 for the right hand side.

All Models

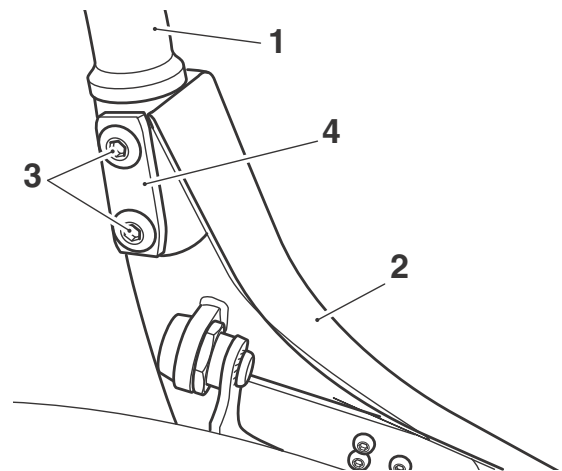
Note:

- **The left hand mounting plate has the key operated lock fitted to it.**
24. Unlock the left hand mounting plate.
 25. To fit the mounting plates, locate the front slot in the mounting plate to the front mounting.
 26. Pull the latch lever on the mounting plate fully rearwards and engage the rear slot onto the rear mounting. Release the latch lever to lock the mounting plate to the rear mounting.



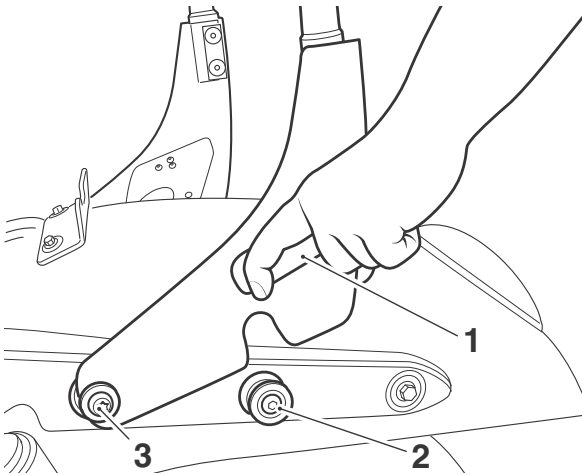
- 1. Front mounting**
2. Rear mounting
3. Latch lever

27. With the sweep in the bar towards the rear, locate the sissy bar into the mounting plates.
 28. Align the holes in the sissy bar and mounting plates. Secure with the M8 x 30 mm bolts and clamp plates. Do not fully tighten the bolts at this stage.



- 1. Sissy bar**
2. Mounting plate, left hand side
3. Bolts, M8 x 30 mm
4. Clamp plate

29. When satisfied that the sissy bar assembly is aligned correctly on the motorcycle, tighten the four sissy bar M8 bolts to **27 Nm**.
30. With the key operated lock in the unlocked position, pull both latch levers rearwards and simultaneously lift the rear of the sissy bar off the rear mountings. Then lift the sissy bar off the front mountings for complete removal from the motorcycle.



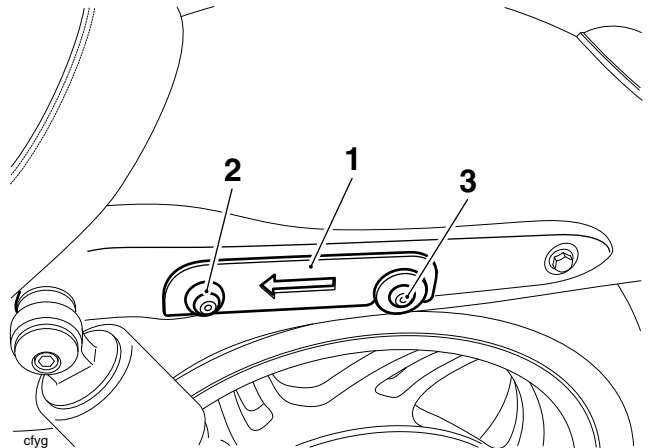
1. Latch lever, left hand side shown
2. Rear mounting
3. Front mounting

31. If the sissy bar assembly can not be released and removed, check the alignment of all components and adjust as necessary.
32. Refit the sissy bar assembly into position on the motorcycle, turn the key clockwise and remove. This should lock the sissy bar onto the motorcycle.
33. Pull the left hand latch lever rearwards to confirm the mechanism is locked. A small amount of movement in the lever may be possible.
34. Refit the seat, as described in the service manual.

Adjustment

If the sissy bar is loose or excessively tight at the mountings, check and, if necessary, adjust the mountings following the procedure below.

1. Remove the sissy bar as described earlier.
2. Fit the gauge from the kit to the large and small mountings.



1. Gauge (shown with the pannier mounting removed)
2. Small mounting
3. Large mounting

3. If the gauge does not fit, adjust the mountings following the steps below.

Motorcycles Fitted with the Pannier Mounting Kit - A9528030

4. Remove the pannier (see page 3).
5. To access the mounting bolts, Remove the bolt, locknut and dampers from the pannier mounting assembly (see page 3).

All Models

6. Loosen the bolts for both mountings and fit the gauge from the kit.
7. Tighten the M10 bolt to **45 Nm**. Tighten the M8 bolt to **26 Nm**.
8. Remove and store the gauge.

Motorcycles Fitted with the Pannier Mounting Kit - A9528030

9. Refit the bolt, locknut and dampers to the pannier mounting assembly. Tighten the locknut to **10 Nm**.
10. Refit the pannier and tighten the bolts to **10 Nm**.

All Models

11. Fit the sissy bar and check that it is secure, repeat the adjustment if necessary.



Warning

After fitting the accessory kit the motorcycle will exhibit new handling characteristics. Operate the motorcycle in a safe area free from traffic to gain familiarity with any new characteristics. Operation of the motorcycle when not familiar with any new handling characteristics may result in loss of motorcycle control and an accident.



Warning

If, after fitment of this accessory kit, you have any doubt about the performance of any aspect of the motorcycle, contact an authorised Triumph dealer and do not ride the motorcycle until the authorised dealer has declared it fit for use. Riding a motorcycle when there is any doubt as to any aspect of the performance of the motorcycle may result in loss of control of the motorcycle leading to an accident.



Warning

Never ride an accessory-equipped motorcycle at speeds above 80 mph (130 km/h).

The presence of accessories will cause changes in the stability and handling of the motorcycle. Failure to allow for changes in motorcycle stability may lead to loss of control or an accident.

Remember that the 80 mph (130 km/h) limit will be reduced by the fitting of non-approved accessories, incorrect loading, worn tyres, overall motorcycle condition and poor road or weather conditions.



Warning

The motorcycle must not be operated above the legal road speed limit except in closed course conditions.



Warning

Only operate this Triumph motorcycle at high speed in closed-course on road competition or on closed-course racetracks. High speed operation should only be attempted by riders who have been instructed in the techniques necessary for high speed riding and are familiar with the motorcycle's characteristics in all conditions.

High speed operation in any other circumstances is dangerous and will lead to loss of motorcycle control and an accident.