

English

Fitting Instructions:

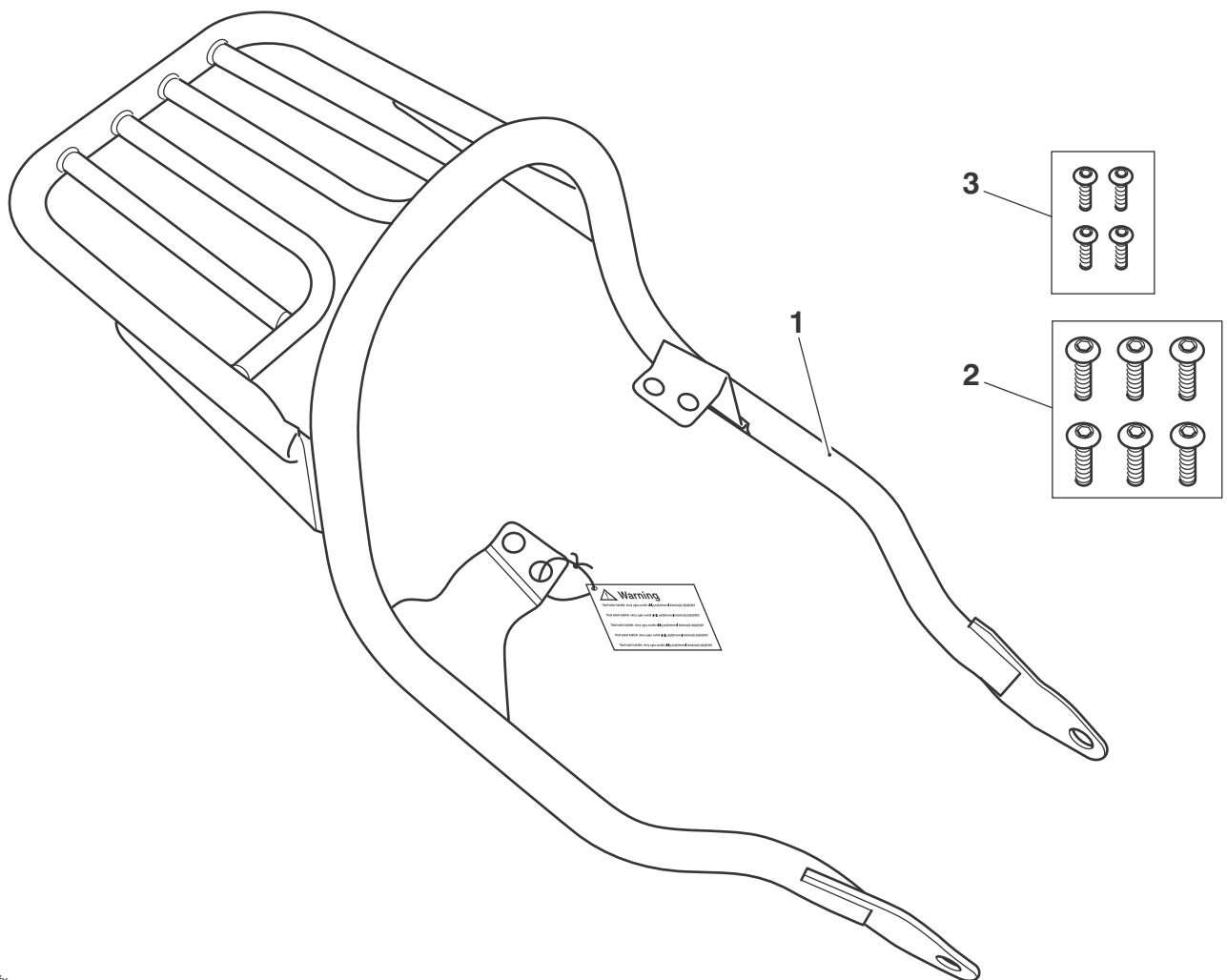
Chrome Luggage Rack Kit - A9738191, A9738203

Bonneville (865 cc models only)

Thank you for choosing this Triumph genuine accessory kit. This accessory kit is the product of Triumph's use of proven engineering, exhaustive testing, and continuous striving for superior reliability, safety and performance.

Completely read all of these instructions before commencing the installation of the accessory kit in order to become thoroughly familiar with the kit's features and the installation process.

These instructions should be considered a permanent part of your accessory kit, and should remain with it even if your accessory equipped motorcycle is subsequently sold.



cffx

Parts Supplied:

1. Chrome luggage rack	1 off	Screw, M6 x 20	4 off
2. Screw, M8 x 20	6 off		



Warning

This accessory kit is designed for use on Triumph 865 cc (52.8 cu in) Bonneville motorcycles only and should not be fitted to any other Triumph model or to any other manufacturer's motorcycle. Fitting this accessory kit to any other Triumph model or to any other manufacturer's motorcycle, may interfere with the rider and could affect the stability and handling of the motorcycle leading to loss of control and an accident.



Warning

This accessory kit must not be fitted to Triumph 790 cc (48.2 cu in) Bonneville motorcycles. If there is any doubt as to the correct engine capacity of the motorcycle, contact an authorised Triumph dealer for assistance. Fitting this accessory kit to Triumph 790 cc (48.2 cu in) Bonneville motorcycles could affect the handling, stability or other aspects of the motorcycle's operation which may result in loss of motorcycle control and an accident.



Warning

Always have Triumph approved parts, accessories and conversions fitted by a trained technician of an authorised Triumph dealer. The fitment of parts, accessories and conversions by a technician who is not of an authorised Triumph dealer may affect the handling, stability or other aspects of the motorcycle's operation which may result in loss of motorcycle control and an accident.



Warning

Throughout this operation, ensure that the motorcycle is stabilised and adequately supported on a paddock stand to prevent risk of injury from the motorcycle falling.



Warning

A torque wrench of known accurate calibration must be used when fitting this accessory kit. Failure to tighten any of the fasteners to the correct torque specification may result in loss of motorcycle control and an accident.

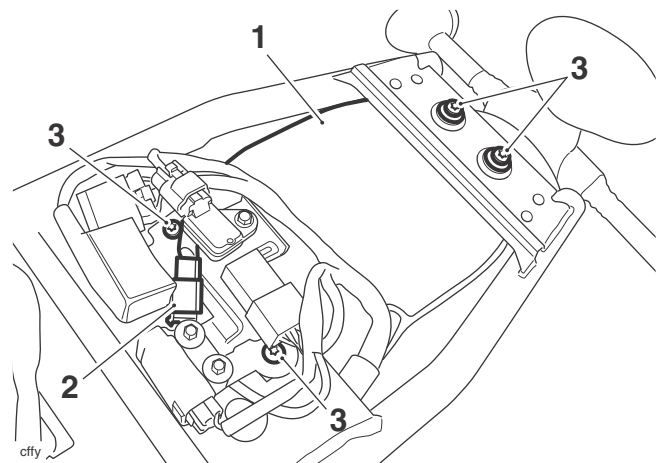
1. Undo and remove the two screws and flanged sleeves (if fitted) from the rear of the rider's seat.
2. Remove the seat.
3. Disconnect the battery, negative (black) lead first.
4. Locate the rear light unit wiring connector and disconnect it from the main wiring harness.



Caution

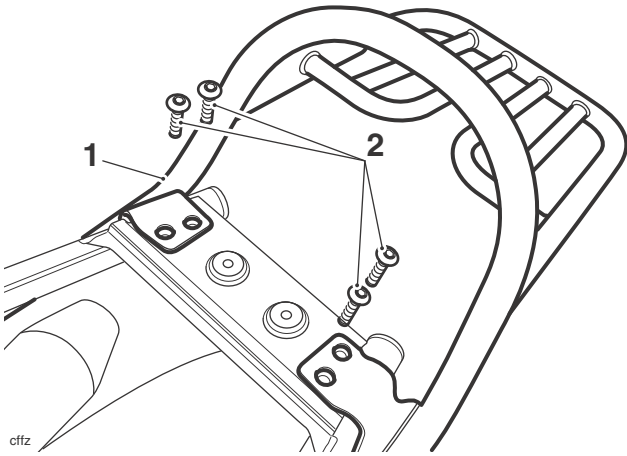
Take care not to damage the painted finish of the mudguard during removal.

5. Undo the four screws securing the rear mudguard to the frame, then carefully remove the mudguard assembly from the motorcycle. Discard the screws.

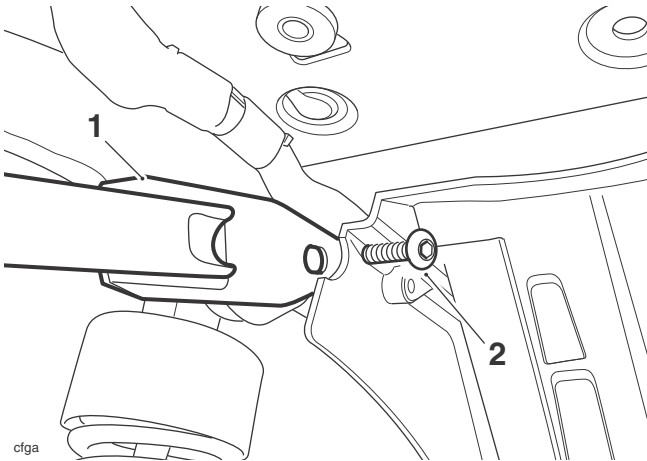


- 1. Rear mudguard**
- 2. Rear light unit wiring connector**
- 3. Rear mudguard fixings**
6. Read the warning label attached to the rack. Once the warning has been noted, remove and discard the label.

7. Position the luggage rack to the frame and secure with the six supplied M8 x 20 mm screws (four at the rear and one on either side at the front). Tighten the screws to **18 Nm**.



1. Rack
2. Fixings



1. Rack
2. Front fixing (left hand shown)

8. Ensure the rear light wiring grommet is correctly located in the front edge of the mudguard then, taking care not to damage its painted finish, position the rear mudguard to the frame.
9. Ensure the mudguard is correctly located to the rear of the airbox then secure with the new fixings supplied in the kit, tightening them to **10 Nm**.
10. Ensure the wiring for the rear light unit is correctly routed then reconnect it to the main wiring harness connector.
11. Reconnect the battery, positive (red) lead first.
12. Check the operation of the rear light unit and indicators. Rectify if necessary.
13. Refit the seat using the original fixings. Locate the seat to the frame ensuring the locating tongue on the underside of the seat is positioned beneath the fuel tank bridge. Tighten the seat screws to **10 Nm**.

 **Warning**

The maximum load that may be carried on the luggage rack is 3 kg (6.6 lbs).

Incorrect loading of the luggage rack may result in an unsafe riding condition leading to loss of motorcycle control and an accident. Always ensure any loads carried are evenly distributed on both sides of the motorcycle. Ensure that the load is correctly secured such that it will not move around while the motorcycle is in motion. Check the load security regularly (though not while the motorcycle is in motion) and ensure that the load does not extend beyond the rear of the motorcycle.

Never exceed the maximum vehicle loading weight of 200 kg (440 lbs).

This maximum loading weight is made up from the combined weight of the rider, passenger, any accessories fitted and any load carried.

 **Warning**

The luggage rack must not be used to carry sharp objects, or objects which extend beyond the extremities of the rack. Carriage of such items on the rack may interfere with, or distract, the rider or passenger and could affect the stability and handling of the motorcycle leading to loss of control and an accident.

 **Warning**

After fitting this accessory kit the motorcycle will exhibit new handling characteristics. Operate the motorcycle in a safe area free from traffic to gain familiarity with any new handling characteristics. Operation of the motorcycle when not familiar with any new handling characteristics may result in loss of motorcycle control and an accident.

 **Warning**

If, after fitment of the accessory kit, there is any doubt as to any aspect of the performance of the motorcycle, contact an authorised Triumph dealer and do not ride the motorcycle until the authorised dealer has declared it fit for use. Riding a motorcycle when there is any doubt as to any aspect of the performance of the motorcycle may result in loss of control of the motorcycle leading to an accident.

 **Warning**

Never ride an accessory equipped motorcycle (including those fitted with Triumph approved windscreens and luggage systems) at speeds above 80 mph (130 km/h). The presence of accessories such as windscreens and luggage systems will cause changes in the stability and handling of the motorcycle. Failure to allow for changes in motorcycle stability may lead to loss of control or an accident. Remember that the 80 mph (130 km/h) limit will be reduced by the fitting of non-approved accessories, incorrect loading, worn tyres, overall motorcycle condition and poor road or weather conditions.

 **Warning**

The motorcycle must not be operated above the legal road speed limit except in closed-course conditions.

 **Warning**

Only operate this Triumph motorcycle at high speed in closed-course on-road competition or on closed-course racetracks. High speed operation should only be attempted by riders who have been instructed in the techniques necessary for high speed riding and are familiar with the motorcycle's characteristics in all conditions. High speed operation in any other circumstances is dangerous and will lead to loss of motorcycle control and an accident.