

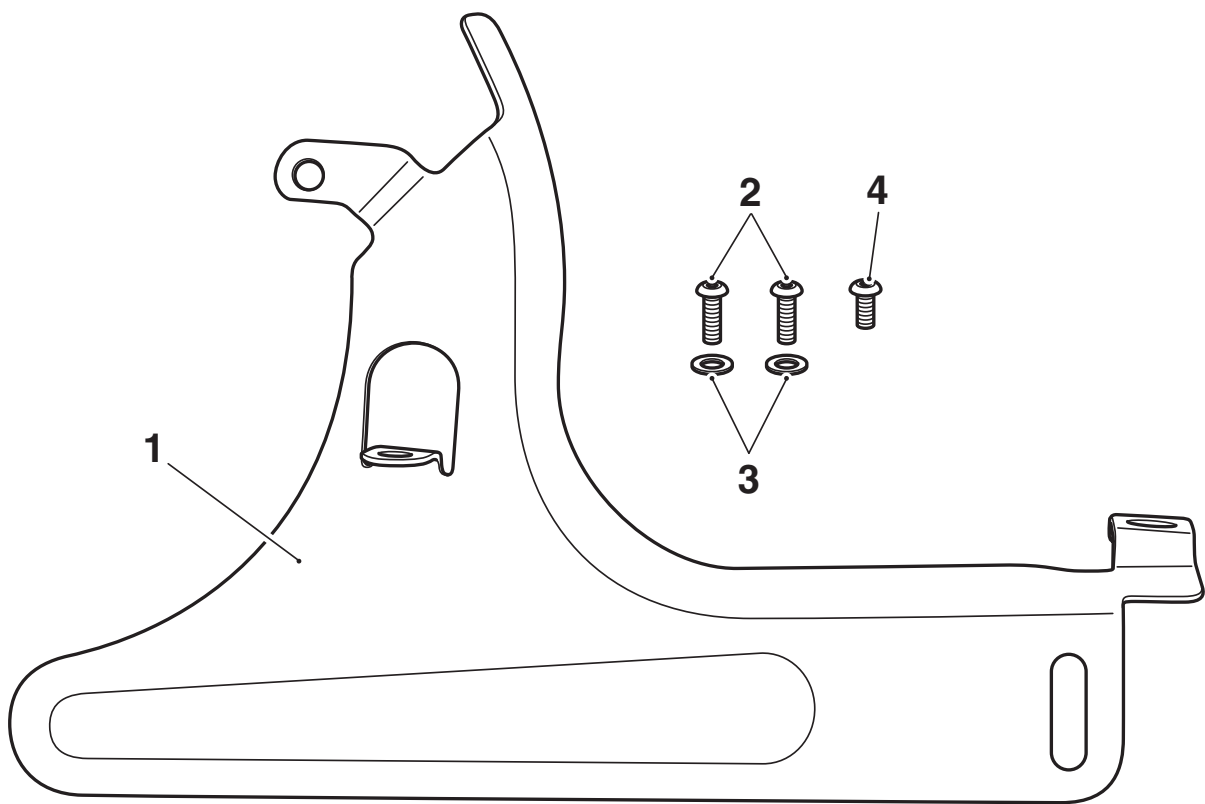
English

Fitting Instructions: Thunderbird A9738135

Thank you for choosing this Triumph genuine accessory kit. This accessory kit is the product of Triumph's use of proven engineering, exhaustive testing, and continuous striving for superior reliability, safety and performance.

Completely read all of these instructions before commencing the installation of the accessory kit in order to become thoroughly familiar with the kit's features and the installation process.

These instructions should be considered a permanent part of your accessory kit, and should remain with it even if your accessory equipped motorcycle is subsequently sold.



Parts Supplied:

| | | | |
|----------------------|-------|------------------------------------|-------|
| 1. Lower belt guard | 1 off | 3. Washer | 2 off |
| 2. Screw, M6 x 16 mm | 2 off | 4. Screw, M6 x 12 mm, encapsulated | 1 off |

Warning

This accessory kit is designed for use on Triumph Thunderbird motorcycles only and should not be fitted to any other manufacturer's motorcycle. Fitting this accessory kit to any other manufacturer's motorcycle will affect the performance, stability and handling of the motorcycle. This may affect the rider's ability to control the motorcycle and could cause an accident.

Warning

Always have Triumph approved parts, accessories and conversions fitted by a trained technician of an authorised Triumph dealer. The fitment of parts, accessories and conversions by a technician who is not of an authorised Triumph dealer may affect the handling, stability or other aspects of the motorcycle's operation which may result in loss of motorcycle control and an accident.

Warning

Throughout this operation, ensure that the motorcycle is stabilised and adequately supported to prevent risk of injury from the motorcycle falling.

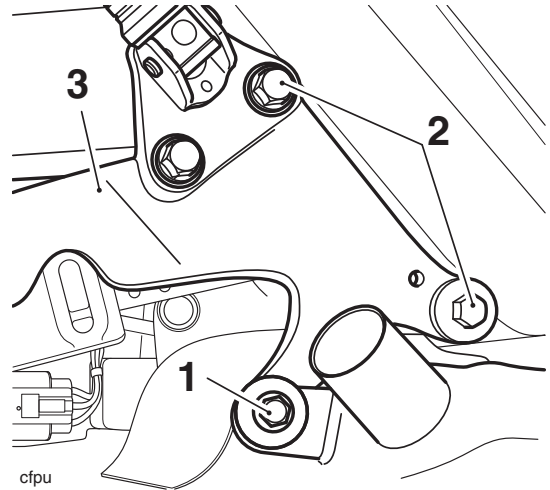
Warning

A torque wrench of known accurate calibration must be used when fitting this accessory kit. Failure to tighten any of the fasteners to the correct torque specification may result in loss of motorcycle control and an accident.

Warning

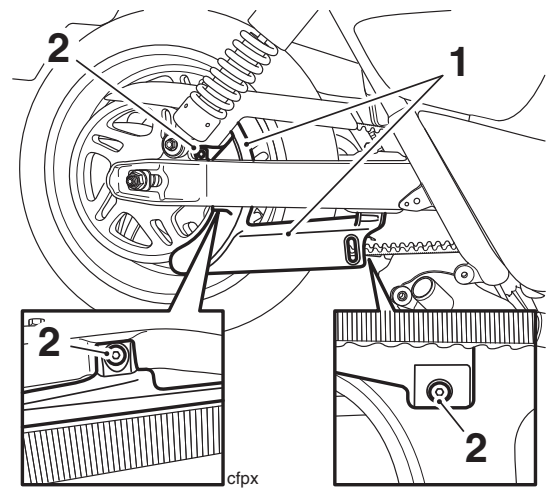
If the engine has recently been running, the exhaust system will be hot. Before working on or near the exhaust system, allow sufficient time for the exhaust system to cool as touching any part of a hot exhaust system could cause burn injuries.

1. Remove the right hand silencer, as described in the service manual.
2. Remove the bolt securing the cat-box to the right hand silencer hanger.
3. Remove the bolts and remove the right hand silencer hanger.



- 1. Bolt, cat-box
- 2. Bolts, silencer hanger
- 3. Silencer hanger

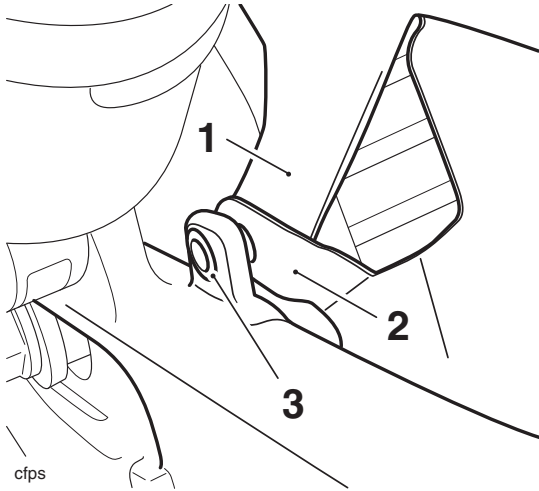
4. Remove the three screws and remove the lower belt guard. Retain the screws and the lower guard if the motorcycle is to be returned to its original condition.



- 1. Lower belt guard
- 2. Screws

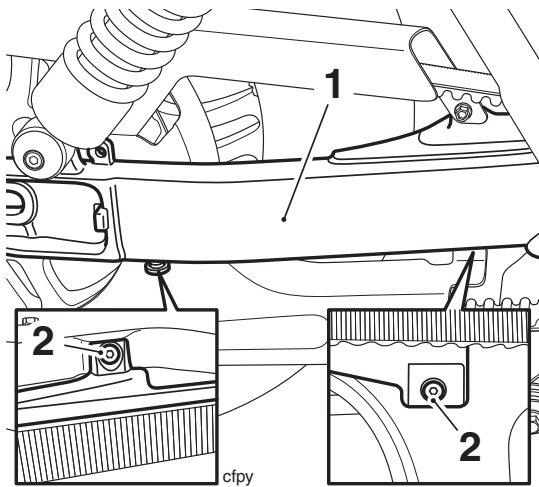
5. Align the lower belt guard from the kit to the swinging arm.

- Ensure that the upper mounting for the guard is positioned between the upper guard and the swinging arm, as shown below.



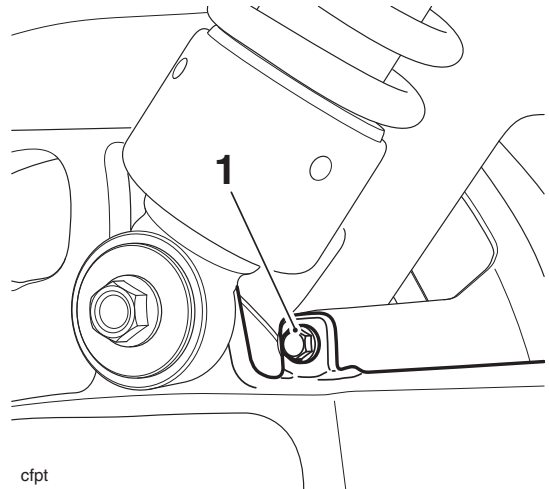
- Upper guard
- Lower guard
- Swinging arm

- Secure the lower guard to the swinging arm with the M6 x 16 mm screws and washers from the kit. Do not fully tighten at this stage.



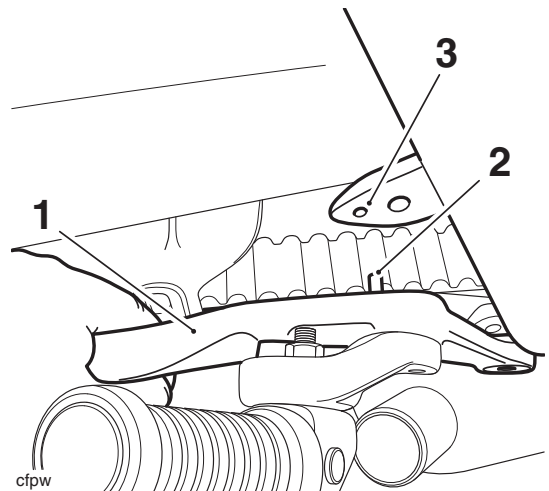
- Swinging arm
- Screws, M6 x 16 mm

- Fit the M6 x 12 mm encapsulated screw from the kit to the upper mounting and tighten to **10 Nm**.



- Screw, M6 x 12 mm encapsulated

- Tighten the two M6 x 16 mm screws to **12 Nm**.
- Align the right hand silencer hanger to the frame. Ensure that the locating peg on the silencer hanger aligns with the locating hole in the frame.



- Silencer hanger
- Locating peg
- Locating hole

- Fit the silencer hanger and secure with the two bolts. Do not fully tighten the bolts at this stage.
- Secure the cat-box to the silencer hanger and tighten the bolt to **22 Nm**.

