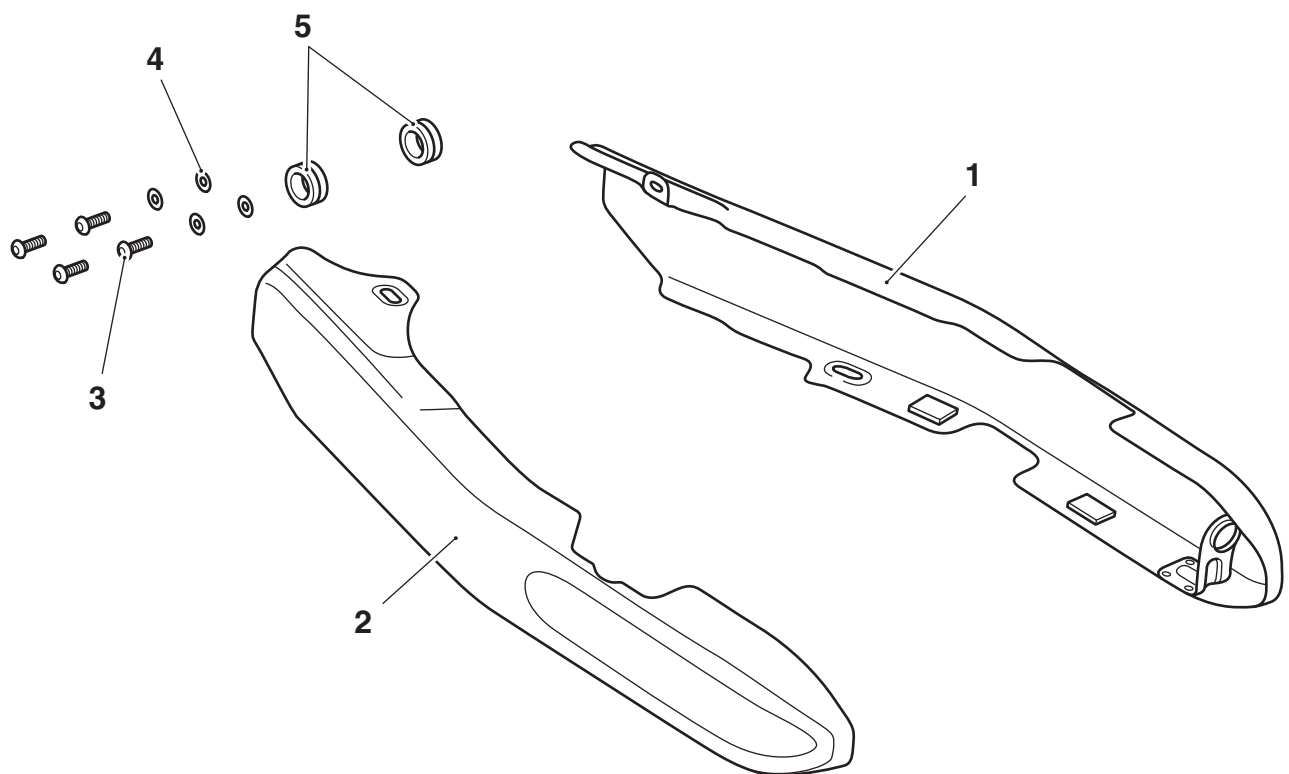


Fitting Instructions: Thunderbird A9738134 and A9648019

Thank you for choosing this Triumph genuine accessory kit. This accessory kit is the product of Triumph's use of proven engineering, exhaustive testing, and continuous striving for superior reliability, safety and performance.

Completely read all of these instructions before commencing the installation of the accessory kit in order to become thoroughly familiar with the kit's features and the installation process.

These instructions should be considered a permanent part of your accessory kit, and should remain with it even if your accessory equipped motorcycle is subsequently sold.



cfwt

Parts Supplied:

1.	Cover, right hand	1 off	4.	Washer	4 off
2.	Cover, left hand	1 off	5.	Grommet	2 off
3.	Screw	4 off			

Warning

This accessory kit is designed for use on Triumph Thunderbird motorcycles only and should not be fitted to any other manufacturer's motorcycle. Fitting this accessory kit to any other manufacturer's motorcycle will affect the performance, stability and handling of the motorcycle. This may affect the rider's ability to control the motorcycle and could cause an accident.

Warning

Always have Triumph approved parts, accessories and conversions fitted by a trained technician of an authorised Triumph dealer. The fitment of parts, accessories and conversions by a technician who is not of an authorised Triumph dealer may affect the handling, stability or other aspects of the motorcycle's operation which may result in loss of motorcycle control and an accident.

Warning

Throughout this operation, ensure that the motorcycle is stabilised and adequately supported to prevent risk of injury from the motorcycle falling.

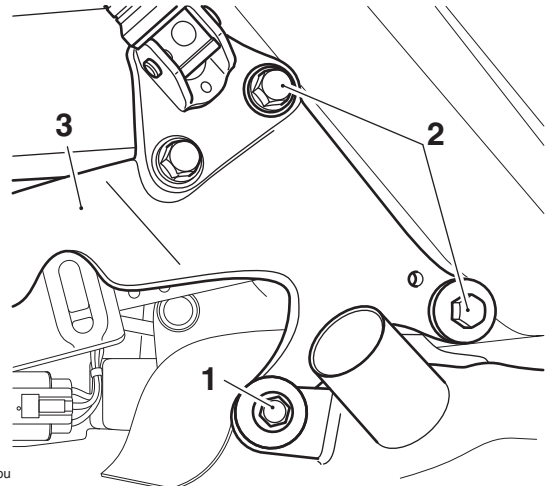
Warning

A torque wrench of known accurate calibration must be used when fitting this accessory kit. Failure to tighten any of the fasteners to the correct torque specification may result in loss of motorcycle control and an accident.

Warning

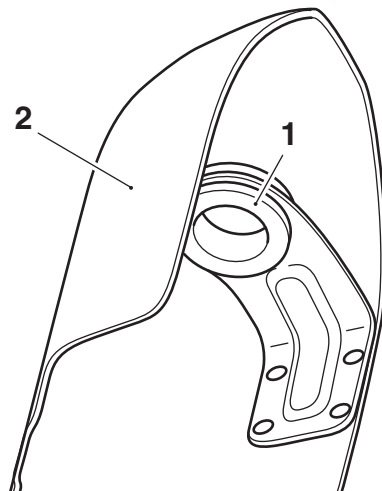
If the engine has recently been running, the exhaust system will be hot. Before working on or near the exhaust system, allow sufficient time for the exhaust system to cool as touching any part of a hot exhaust system could cause burn injuries.

1. Remove the right hand exhaust silencer, as described in the service manual.
2. Remove the bolt securing the catalytic converter to the right hand silencer hanger.
3. Remove the right hand silencer hanger.



- 1. Bolt, catalytic converter
- 2. Bolts
- 3. Silencer hanger

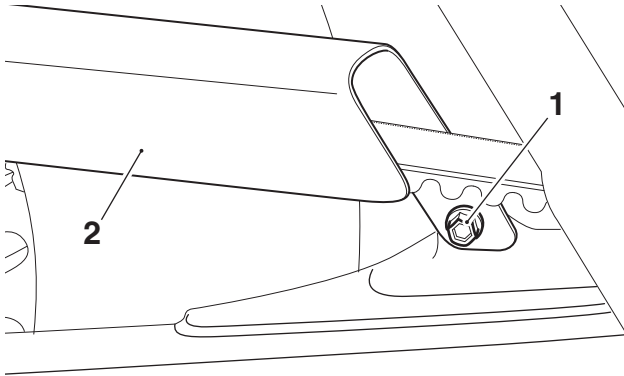
4. Fit the grommets from the kit to the swinging arm covers as shown below.



- 1. Grommet
- 2. Swinging arm cover

Right hand side

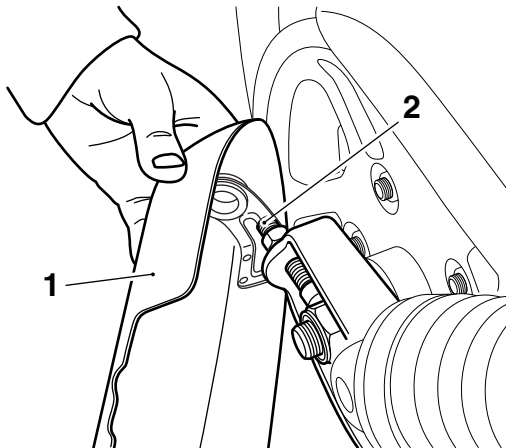
- Remove the fixing, securing the upper belt guard to the front of the swinging arm. Retain the fixing if the motorcycle is to be returned to its original condition.



cfpy_1

- Fixing
- Upper belt guard

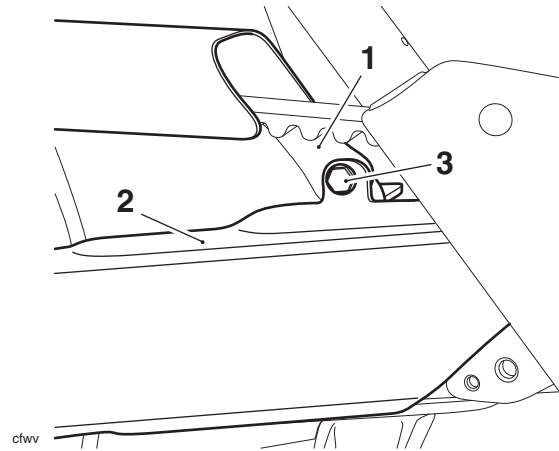
- Align the swinging arm cover over the drive belt tensioner and position on to the swinging arm.



cfwx

- Swinging arm cover
- Drive belt tensioner

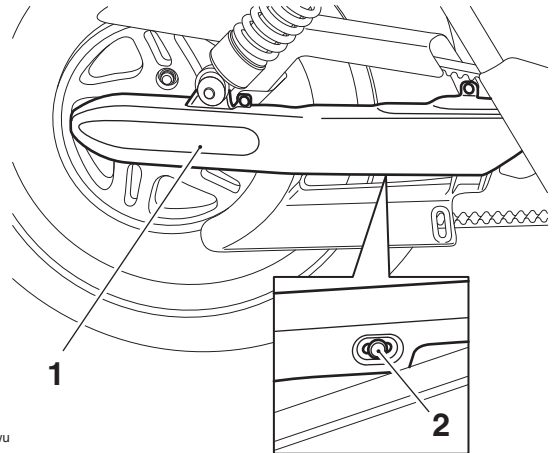
- Ensure that the front mounting for the upper belt guard is positioned between the swinging arm cover and the swinging arm as shown below. Fit a screw and washer from the kit and tighten to **8 Nm**.



cfwv

- Upper belt guard
- Swinging arm cover
- Screw

- Fit a screw and washer from the kit to the lower mounting and tighten to **12 Nm**.

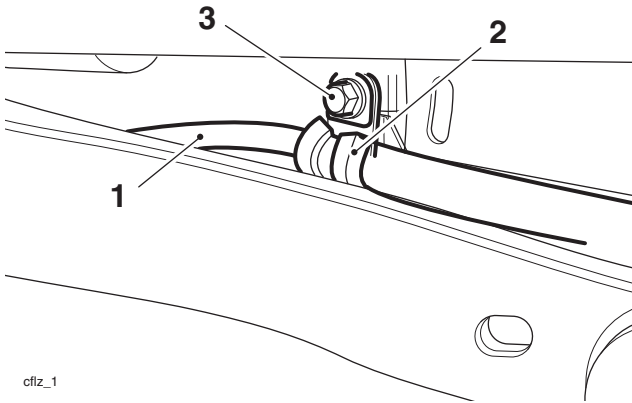


cfwu

- Swinging arm cover
- Screw

Left hand side

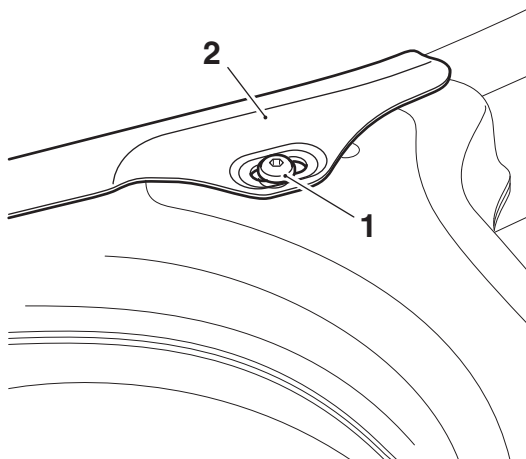
- Remove the fixing and detach the brake pipe P-clip from the left hand side of the swinging arm. Retain the fixing if the motorcycle is to be returned to its original condition.



cfiz_1

- Brake pipe
- Clip
- Fixing

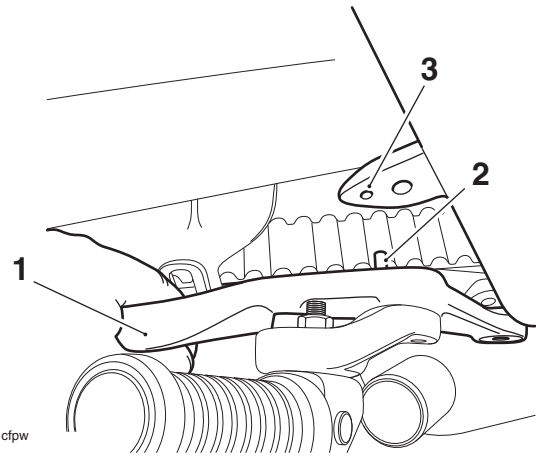
- Align the swinging arm cover over the drive belt tensioner and position on to the swinging arm.
- Secure the brake pipe P-clip and swinging arm cover to the swinging arm with a screw and washer from the kit. Tighten the screw to **7 Nm**.
- Secure the top of the swinging arm cover with a screw and washer from the kit. Tighten the screw to **12 Nm**.



cfyf

- Screw
- Swinging arm cover

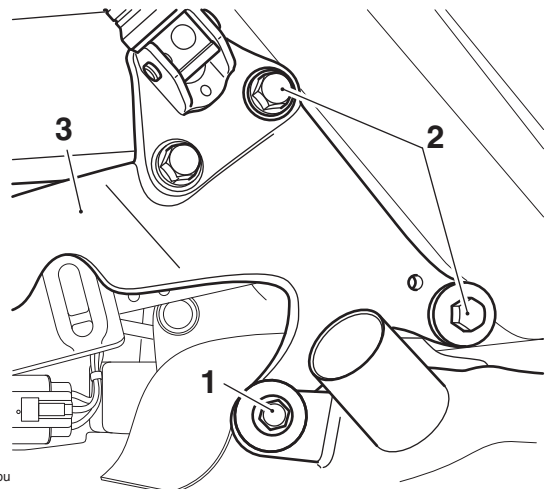
- Align the right hand silencer hanger to the frame. Ensure that the locating peg on the silencer hanger aligns with the locating hole in the frame.



cfpw

- Silencer hanger
- Locating peg
- Locating hole

- Fit the silencer hanger and secure with the two bolts. Do not fully tighten the bolts at this stage.
- Secure the exhaust catalytic converter to the silencer hanger and tighten the bolt to **22 Nm**.
- Tighten the silencer hanger bolts to **40 Nm**.



cfpu

- Bolt, exhaust catalytic converter
- Bolts
- Silencer hanger

- Refit the right hand exhaust silencer, as described in the service manual.



Warning

If, after fitment of this accessory kit, you have any doubt about the performance of any aspect of the motorcycle, contact an authorised Triumph dealer and do not ride the motorcycle until the authorised dealer has declared it fit for use. Riding a motorcycle when there is any doubt as to any aspect of the performance of the motorcycle may result in loss of control of the motorcycle leading to an accident.



Warning

Never ride an accessory equipped motorcycle at speeds above 80 mph (130 km/h).

The presence of accessories will cause changes in the stability and handling of the motorcycle. Failure to allow for changes in motorcycle stability may lead to loss of control or an accident.

Remember that the 80 mph (130 km/h) limit will be reduced by the fitting of non-approved accessories, incorrect loading, worn tyres, overall motorcycle condition and poor road or weather conditions.



Warning

The motorcycle must not be operated above the legal road speed limit except in closed-course conditions.



Warning

Only operate this Triumph motorcycle at high speed in closed-course on road competition or on closed-course racetracks. High speed operation should only be attempted by riders who have been instructed in the techniques necessary for high speed riding and are familiar with the motorcycle's characteristics in all conditions.

High speed operation in any other circumstances is dangerous and will lead to loss of motorcycle control and an accident.