

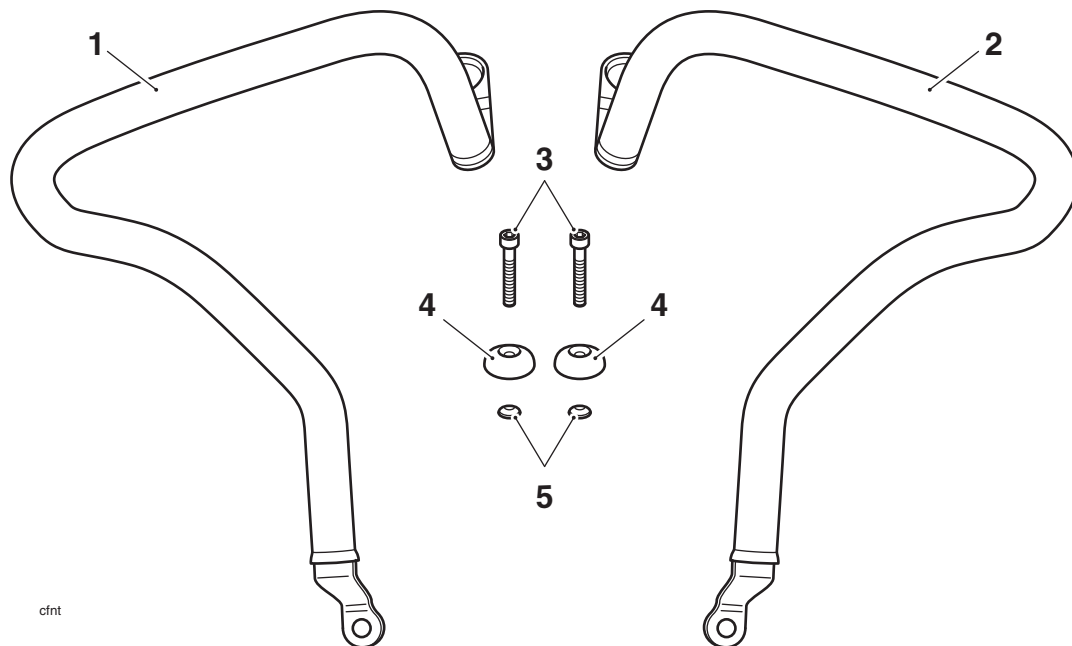
English

Fitting Instructions: Thunderbird A9738119

Thank you for choosing this Triumph genuine accessory kit. This accessory kit is the product of Triumph's use of proven engineering, exhaustive testing, and continuous striving for superior reliability, safety and performance.

Completely read all of these instructions before commencing the installation of the accessory kit in order to become thoroughly familiar with the kit's features and the installation process.

These instructions should be considered a permanent part of your accessory kit, and should remain with it even if your accessory equipped motorcycle is subsequently sold.



Parts Supplied:

1. Dresser bar - left hand	1 off	4. Finisher	2 off
2. Dresser bar - right hand	1 off	5. Bolt cover	2 off
3. Bolt,	2 off		



Warning

This accessory kit is designed for use on Triumph Thunderbird motorcycles only and should not be fitted to any other manufacturer's motorcycle. Fitting this accessory kit to any other manufacturer's motorcycle will affect the performance, stability and handling of the motorcycle. This may affect the riders ability to control the motorcycle and could cause an accident.



Warning

Always have Triumph approved parts, accessories and conversions fitted by a trained technician of an authorised Triumph dealer. The fitment of parts, accessories and conversions by a technician who is not of an authorised Triumph dealer may affect the handling, stability or other aspects of the motorcycles operation which may result in loss of motorcycle control and an accident.



Warning

Throughout this operation, ensure that the motorcycle is stabilised and adequately supported to prevent risk of injury from the motorcycle falling.



Warning

A torque wrench of known accurate calibration must be used when fitting this accessory kit. Failure to tighten any of the fasteners to the correct torque specification may result in loss of motorcycle control and an accident.

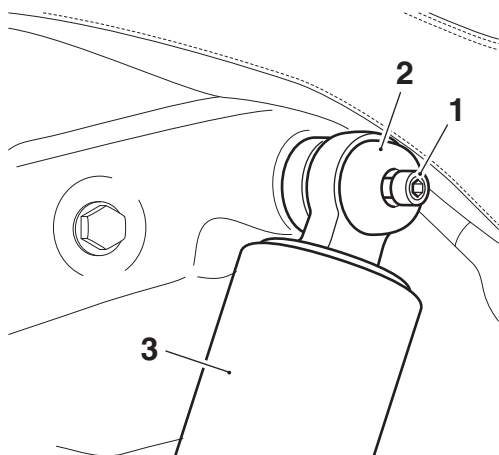
Note:

- **The same procedure can be used to fit the left hand or right hand rear dresser bar.**

1. Remove the screw and finisher from the upper mounting of the rear suspension unit. Retain the screw and finisher if the motorcycle is to be returned to its original condition.

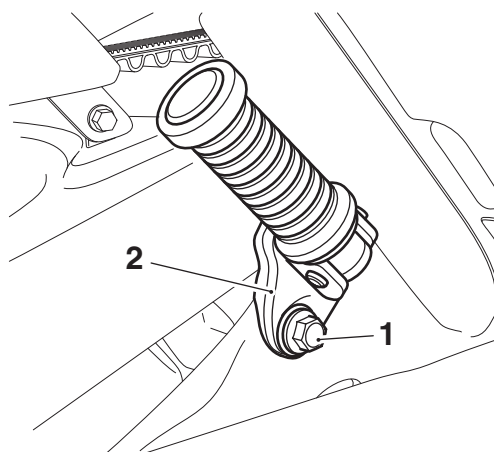
Note:

- **A suitable thread locking compound must be applied to the original screw thread if it is to be re-used.**



1. Screw
2. Finisher
3. Rear suspension unit

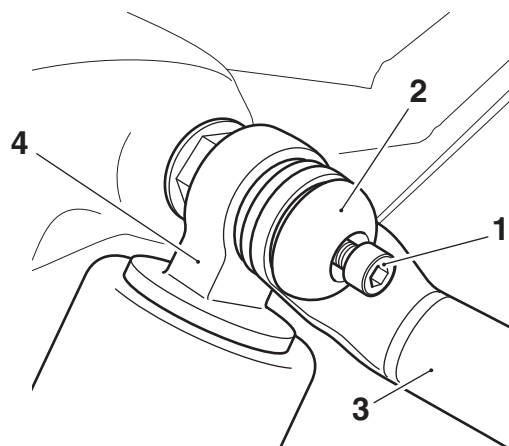
2. Remove the rear bolt for the pillion footrest bracket.



1. Bolt
2. Pillion footrest bracket

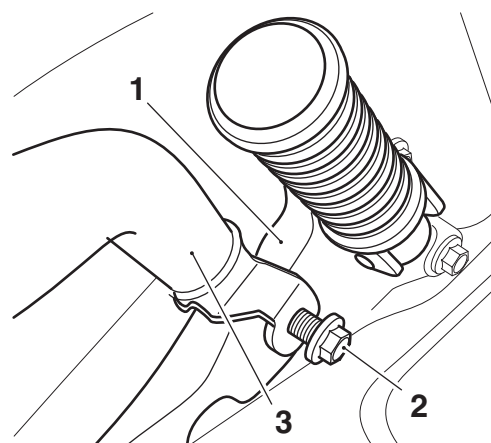
3. Align the upper mounting of the dresser bar to the upper mounting of the rear suspension unit.

4. Fit one of the bolts and finishers from the kit. Do not fully tighten the bolt at this stage.



1. Bolt
2. Finisher
3. Dresser bar
4. Rear suspension unit

5. Align the lower mounting of the dresser bar to the pillion footrest bracket. Fit the original bolt and tighten to **40 Nm**.



1. Pillion footrest bracket
2. Bolt
3. Dresser bar bracket

6. Tighten the upper mounting bolt of the dresser bar to **28 Nm**.
7. Fit the bolt cover to the upper mounting bolt.
8. Repeat for the other side.



Warning

If, after fitment of this accessory kit, you have any doubt about the performance of any aspect of the motorcycle, contact an authorised Triumph dealer and do not ride the motorcycle until the authorised dealer has declared it fit for use. Riding a motorcycle when there is any doubt as to any aspect of the performance of the motorcycle may result in loss of control of the motorcycle leading to an accident.



Warning

Never ride an accessory equipped motorcycle at speeds above 80 mph (130 km/h).

The presence of accessories will cause changes in the stability and handling of the motorcycle. Failure to allow for changes in motorcycle stability may lead to loss of control or an accident.

Remember that the 80 mph (130 km/h) limit will be reduced by the fitting of non-approved accessories, incorrect loading, worn tyres, overall motorcycle condition and poor road or weather conditions.



Warning

Only operate this Triumph motorcycle at high speed in closed-course on road competition or on closed-course racetracks. High speed operation should only be attempted by riders who have been instructed in the techniques necessary for high speed riding and are familiar with the motorcycle's characteristics in all conditions.

High speed operation in any other circumstances is dangerous and will lead to loss of motorcycle control and an accident.