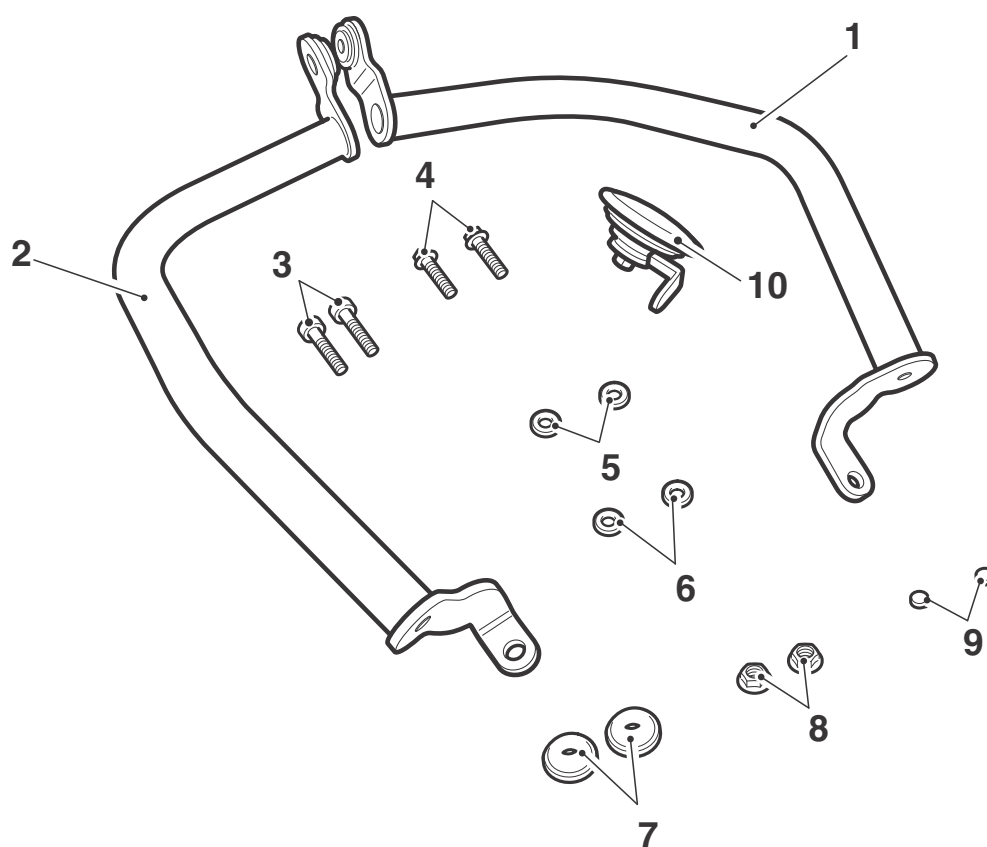


Fitting Instructions: Thunderbird A9738118

Thank you for choosing this Triumph genuine accessory kit. This accessory kit is the product of Triumph's use of proven engineering, exhaustive testing, and continuous striving for superior reliability, safety and performance.

Completely read all of these instructions before commencing the installation of the accessory kit in order to become thoroughly familiar with the kit's features and the installation process.

These instructions should be considered a permanent part of your accessory kit, and should remain with it even if your accessory equipped motorcycle is subsequently sold.



Parts Supplied:

1. Dresser bar - left hand	1 off	6. Washer, M8 (if supplied)	2 off
2. Dresser bar - right hand	1 off	7. Finisher	2 off
3. Screw, M8 x 30 mm	2 off	8. Locknut, M10	2 off
4. Bolt, M10 x 35 mm	2 off	9. Screw cover	2 off
5. Washer, M10	2 off	10. Horn	1 off



Warning

This accessory kit is designed for use on Triumph Thunderbird motorcycles only and should not be fitted to any other Triumph model or to any other manufacturer's motorcycle. Fitting this accessory kit to any other Triumph model, or to any other manufacturer's motorcycle, may interfere with the rider and could affect the handling, stability or other aspects of the motorcycle's operation which may result in loss of motorcycle control and an accident.



Warning

Always have Triumph approved parts, accessories and conversions fitted by a trained technician of an authorised Triumph dealer. The fitment of parts, accessories and conversions by a technician who is not of an authorised Triumph dealer may affect the handling, stability or other aspects of the motorcycle's operation which may result in loss of motorcycle control and an accident.



Warning

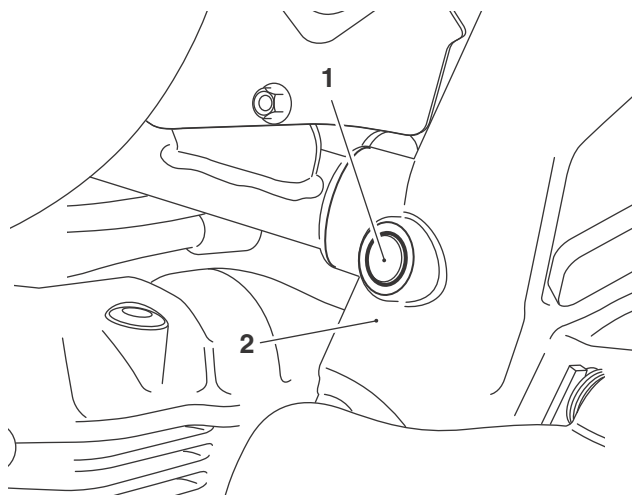
A torque wrench of known accurate calibration must be used when fitting this accessory kit. Failure to tighten any of the fasteners to the correct torque specification may affect motorcycle performance, handling and stability. This may result in loss of motorcycle control and an accident.



Warning

Before starting work, ensure the motorcycle is stabilised and adequately supported. This will help prevent it from falling and causing injury to the operator or damage to the motorcycle.

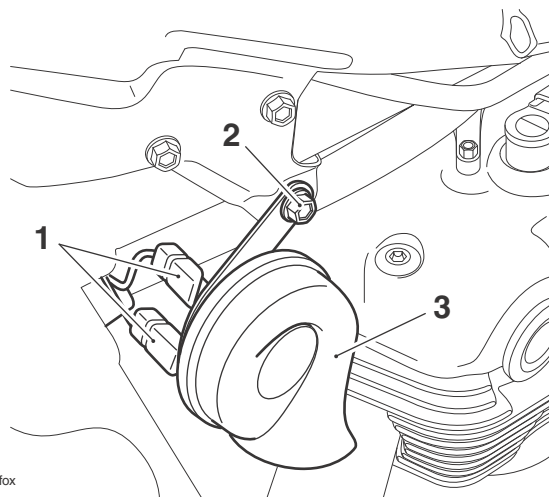
1. Remove the rider's seat, as described in the service manual.
2. Disconnect the battery, negative (black) lead first.
3. Raise and support the fuel tank, as described in the service manual.
4. Carefully remove the plastic plug from the front tube of the frame, on both sides. Retain the plastic plugs if the motorcycle is to be returned to its original condition.



1. Plastic plug (right hand side shown)

2. Front tube

5. Disconnect the horn electrical connectors and remove the horn. Retain the fixing for reuse. Retain the horn if the motorcycle is to be returned to its original condition.



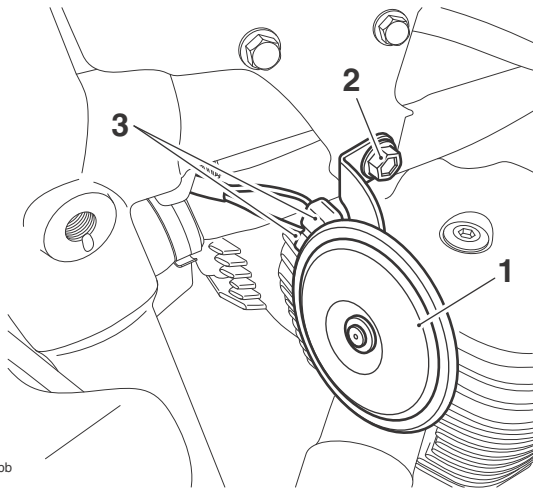
1. Electrical connectors

2. Fixing

3. Horn

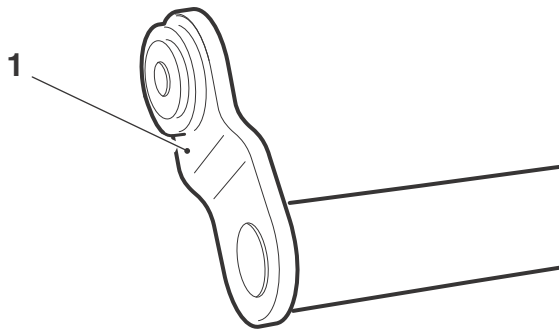
6. Fit the horn from the kit and tighten the original fixing to **18 Nm**.

7. Connect the horn electrical connectors.



- 1. Horn**
2. Fixing
3. Electrical connectors

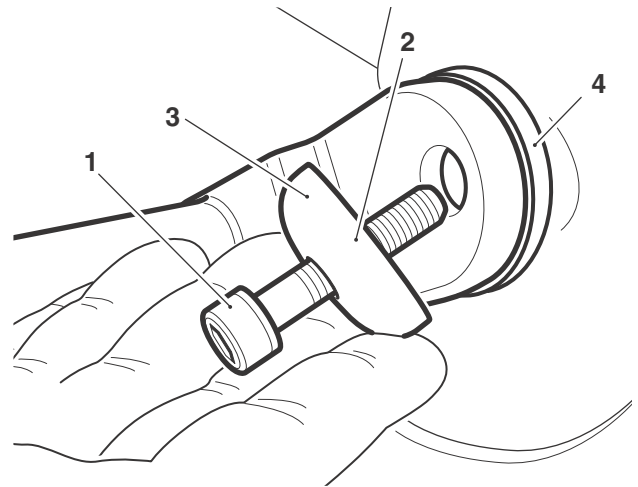
8. Check the underside of the upper mounting on the dresser bar to see if there is a number on it.
- If there is a number, the M8 washer is not required/supplied, omit step 10.
 - If there is not a number, the M8 washer supplied must be fitted at step 10.



- 1. Location of number**

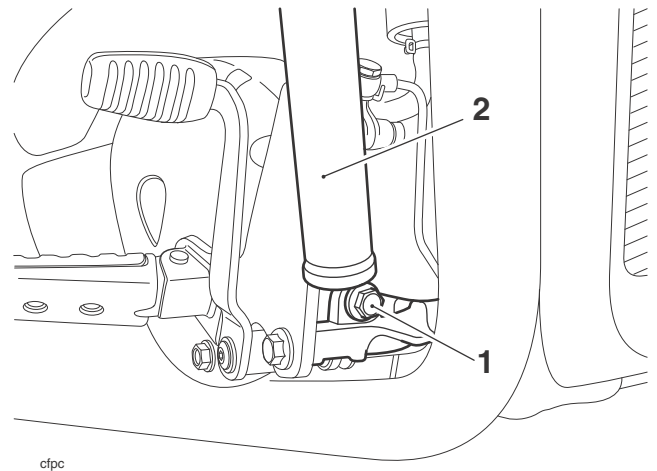
9. Align the upper mounting of the dresser bar to the threaded hole in the front tube of the frame.
10. If there is **not** a number on the dresser bar mounting, as described in step 8, fit an M8 washer from the kit between the dresser bar and the frame.

11. Fit an M8 x 30 mm screw and a finisher from the kit. Do not fully tighten at this stage.



- 1. Screw, M8 x 30 mm**
2. Finisher
3. Engine dresser bar (right hand side shown)
4. Washer, M8 (if supplied)

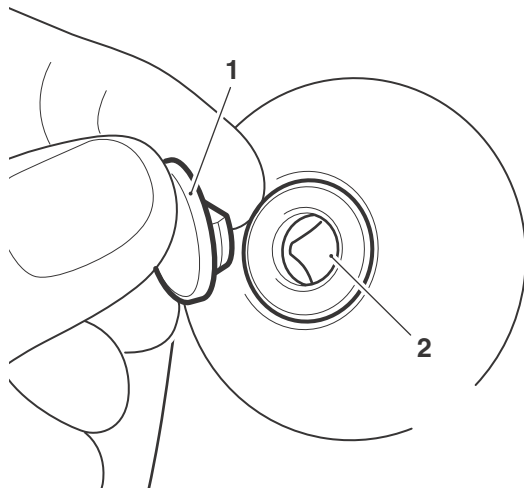
12. Align the lower mounting of the dresser bar to the engine bracket and fit the M10 x 35 mm bolt, M10 washer and locknut. Tighten the bolt to **25 Nm**.



- 1. Bolt M10 x 35 mm**
2. Engine dresser bar (right hand side shown)

13. Tighten the upper mounting screw of the dresser bar to **25 Nm**.

14. Fit the screw cover to the upper mounting screw.



- 1. Screw cover**
2. Screw, M8 x 30 mm

15. Repeat steps 8 to 12 for the left hand engine dresser bar.
16. Lower the fuel tank, as described in the service manual.
17. Reconnect the battery, positive (red) lead first.
18. Fit the rider's seat, as described in the service manual.



Warning

After fitting the accessory kit, the motorcycle will exhibit new handling characteristics. Operate the motorcycle in a safe area free from traffic to gain familiarity with any new handling characteristics. Operation of the motorcycle when not familiar with any new handling characteristics may result in loss of motorcycle control and an accident.



Warning

Never ride an accessory equipped motorcycle (including those fitted with Triumph approved windshields and luggage systems) at speeds above 80 mph (130 km/h).

The presence of accessories such as windshields and luggage systems will cause changes to the stability and handling of the motorcycle. Failure to allow for changes in motorcycle stability may lead to loss of control or an accident.

Remember that the 80 mph (130 km/h) limit will be reduced by the fitting of non-approved accessories, incorrect loading, worn tyres, overall motorcycle condition and poor road or weather conditions.



Warning

This motorcycle must not be operated above the legal road speed limit except in authorised closed-course conditions.



Warning

If after the fitment of this accessory kit, you have any doubt about the performance of any aspect of the motorcycle, contact an authorised Triumph dealer and do not ride the motorcycle until the authorised dealer has declared it fit for use. Riding a motorcycle when there is any doubt as to any aspect of the performance of the motorcycle may result in loss of control of the motorcycle leading to an accident.