

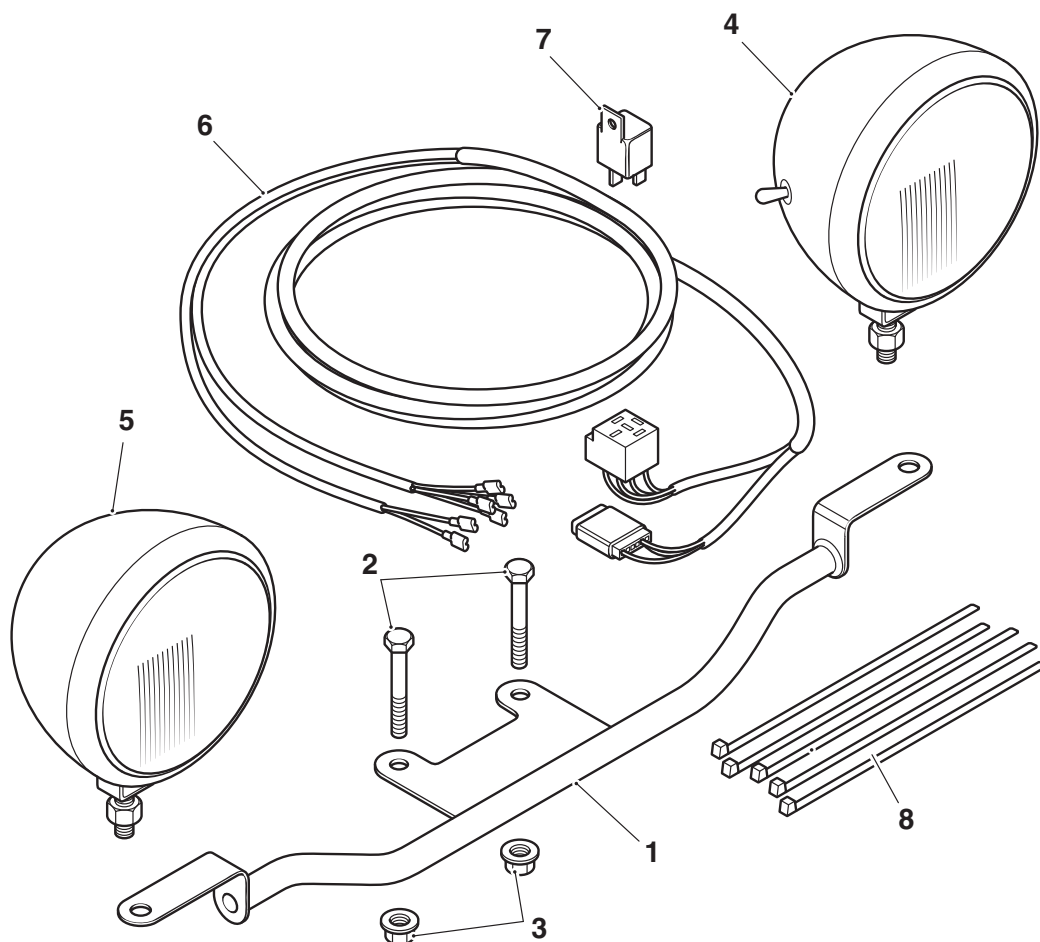
Fitting Instructions:

America - up to VIN 468389 and Speedmaster up to VIN 469049 A9738030

Thank you for choosing this Triumph genuine accessory kit. This accessory kit is the product of Triumph's use of proven engineering, exhaustive testing, and continuous striving for superior reliability, safety and performance.

Completely read all of these instructions before commencing the installation of the accessory kit in order to become thoroughly familiar with the kit's features and the installation process.

These instructions should be considered a permanent part of your accessory kit, and should remain with it even if your accessory equipped motorcycle is subsequently sold.



catk

Parts Supplied:

1.	Mounting bar	1 off	5.	Spot light, right hand	1 off
2.	M8 x 50 mm bolts	2 off	6.	Harness	1 off
3.	M8 lock nuts	2 off	7.	Relay	1 off
4.	Spot light, left hand, with toggle switch	1 off	8.	Cable ties	5 off

Warning

This accessory kit is designed for use on Triumph America up to VIN 468389 and Speedmaster up to VIN 469049 motorcycles only and should not be fitted to any other Triumph model or to any other manufacturer's motorcycle. Fitting this accessory kit to any other Triumph model, or to any other manufacturer's motorcycle, may interfere with the rider and could affect the handling, stability or other aspects of the motorcycle's operation which may result in loss of motorcycle control and an accident.

Warning

Always have Triumph approved parts, accessories and conversions fitted by a trained technician of an authorised Triumph dealer. The fitment of parts, accessories and conversions by a technician who is not of an authorised Triumph dealer may affect the handling, stability or other aspects of the motorcycle's operation which may result in loss of motorcycle control and an accident.

Warning

Throughout this operation, ensure that the motorcycle is stabilised and adequately supported on a paddock stand to prevent risk of injury from the motorcycle falling.

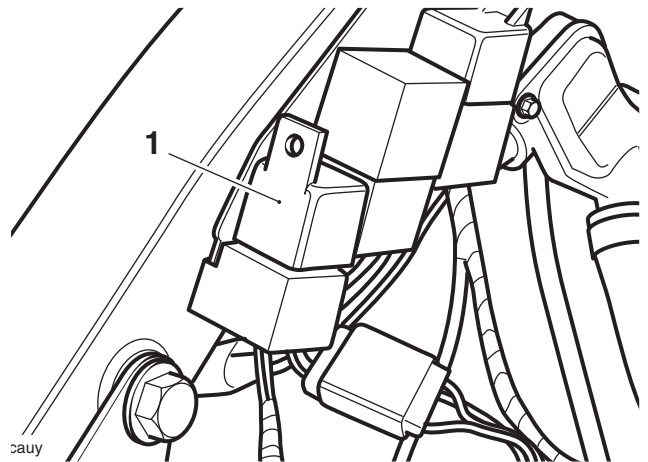
Warning

A torque wrench of known accurate calibration must be used when fitting this accessory kit. Failure to tighten any of the fasteners to the correct torque specification may affect motorcycle performance, handling and stability. This may result in loss of motorcycle control and an accident.

Note:

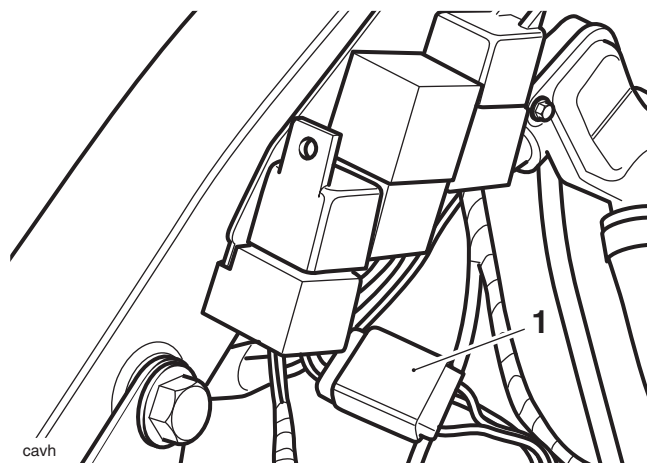
- **These lamps are NOT approved for use outside north America.**

1. Disconnect the battery, negative (black) lead first.
2. Remove the seats and the warning light panel, disconnect the harness from the warning light panel and remove the fuel tank.
3. Fit the relay carrier to the relay bracket.
4. Connect the harness connector to the relay and fit the relay to the relay carrier.



1. Relay

5. Connect the light harness to the bike harness connector adjacent to the relay.



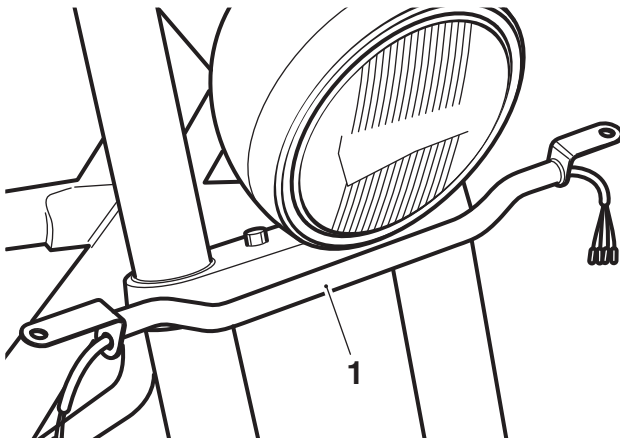
1. Harness

- Route the harness through the motorcycle to exit the left hand side of the headlight, using cable ties to tidy any loose wiring inside the frame.



1. Harness

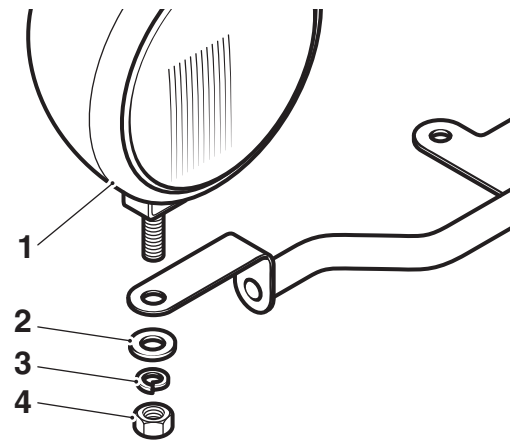
- Feed the harness through the lighting bar, feeding the cable with the four connectors to the left hand side of the bar and the cable with the two connectors to the right hand side of the lighting bar.
- Fit the lighting bar to the underside of the lower yoke using the bolts and nuts supplied. Tighten to **22 Nm**.



1. Lighting bar

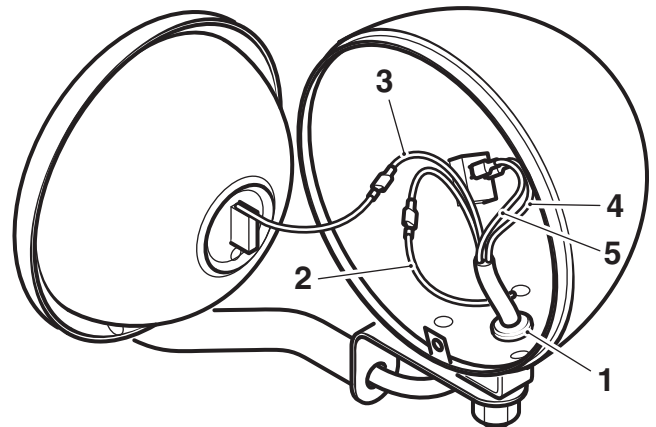
- Remove the lenses from the spot lights by removing the screw on the rim.

- Remove the mounting nuts and washers from the light mounting studs and fit the lights to the lighting bar as shown. Do not tighten at this stage.



- Lamp**
- Plain washer**
- Spring washer**
- Nut**

- Feed the wiring harness through the grommet in the spot light bowls. On the left hand light connect the black wire to the shell, the blue/white wire to the lamp and the red and brown wires to the terminals on the toggle switch. Repeat for the right hand light with the black and blue/white wires.



- Grommet**
- Black wire**
- Blue/white wire**
- Red wire**
- Brown wire**

- Refit the lens units.

13. Adjust the lights to align with the main headlamp and tighten all fixings to **15 Nm**.
14. Refit the warning light panel, fuel tank and seats, as described in the service manual.
15. Reconnect the battery, positive (red) lead first.

Note:

- **The lamps may be independently switched off using the toggle switch on the left hand lamp.**



Warning

After fitting the accessory kit, the motorcycle will exhibit new handling characteristics. Operate the motorcycle in a safe area free from traffic to gain familiarity with any new characteristics. Operation of the motorcycle when not familiar with any new handling characteristics may result in loss of motorcycle control and an accident.



Warning

If, after fitment of this accessory kit, you have any doubt about the performance of any aspect of the motorcycle, contact an authorised Triumph dealer and do not ride the motorcycle until the authorised dealer has declared it fit for use. Riding a motorcycle when there is any doubt as to any aspect of the performance of the motorcycle may result in loss of control of the motorcycle leading to an accident.



Warning

Never ride an accessory equipped motorcycle at speeds above 80 mph (130 km/h).

The presence of accessories will cause changes in the stability and handling of the motorcycle. Failure to allow for changes in motorcycle stability may lead to loss of control or an accident.

Remember that the 80 mph (130 km/h) limit will be reduced by the fitting of non-approved accessories, incorrect loading, worn tyres, overall motorcycle condition and poor road or weather conditions.



Warning

The motorcycle must not be operated above the legal road speed limit except in closed course conditions.



Warning

Only operate this Triumph motorcycle at high speed in closed-course on road competition or on closed-course racetracks. High speed operation should only be attempted by riders who have been instructed in the techniques necessary for high speed riding and are familiar with the motorcycle's characteristics in all conditions.

High speed operation in any other circumstances is dangerous and will lead to loss of motorcycle control and an accident.