

---

## **Fitting Instructions:**

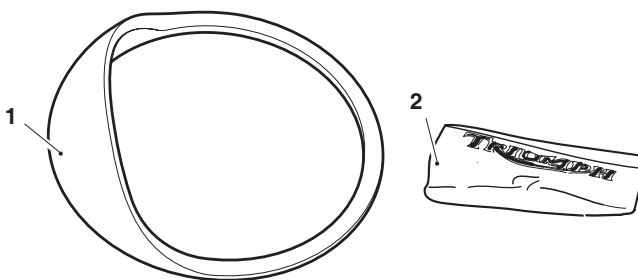
### **Thunderbird**

### **Instrument Visor, Chrome - A9730610**

Thank you for choosing this Triumph genuine accessory kit. This accessory kit is the product of Triumph's use of proven engineering, exhaustive testing, and continuous striving for superior reliability, safety and performance.

Completely read all of these instructions before commencing the installation of the accessory kit in order to become thoroughly familiar with the kit's features and the installation process.

These instructions should be considered a permanent part of your accessory kit, and should remain with it even if your accessory equipped motorcycle is subsequently sold.



### **Parts Supplied:**

- |                             |       |                  |       |
|-----------------------------|-------|------------------|-------|
| 1. Instrument visor, chrome | 1 off | 2. Cleaning wipe | 1 off |
|-----------------------------|-------|------------------|-------|

**Warning**

This accessory kit is designed for use on Triumph Thunderbird motorcycles only and should not be fitted to any other manufacturer's motorcycle. Fitting this accessory kit to any other manufacturer's motorcycle will affect the performance, stability and handling of the motorcycle. This may affect the rider's ability to control the motorcycle and could cause an accident.

**Warning**

Always have Triumph approved parts, accessories and conversions fitted by a trained technician of an authorised Triumph dealer. The fitment of parts, accessories and conversions by a technician who is not of an authorised Triumph dealer may affect the handling, stability or other aspects of the motorcycle's operation which may result in loss of motorcycle control and an accident.

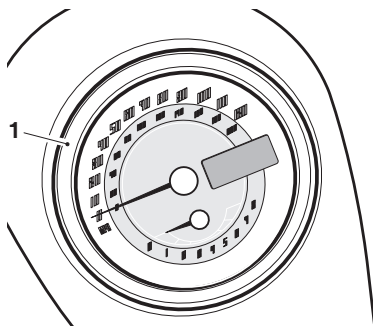
**Warning**

Throughout this operation, ensure that the motorcycle is stabilised and adequately supported to prevent risk of injury from the motorcycle falling.

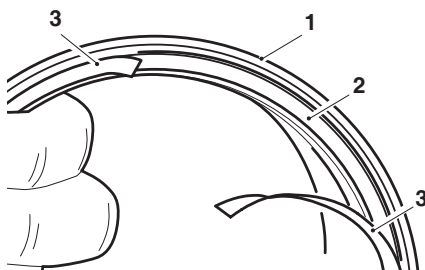
**Note:**

- **Read the warning notices printed on the cleaning wipe packet in the fitting kit.**

1. Clean the face of the instrument bezel with the cleaning wipe provided.

**1. Instrument bezel**

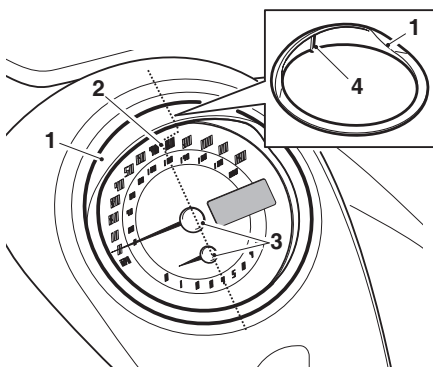
2. Remove the protective film from the adhesive pad on the rear of the instrument visor.

**1. Instrument visor****2. Adhesive pad****3. Protective film**

### ! Caution

When fitting self adhesive parts care must be taken to ensure positioning is correct and accurate. Once the adhesive has been attached to the mounting surface, there is no satisfactory method of removal and re-positioning if incorrectly aligned. Initial bonding is instant, full bonding is achieved after 72 hours.

3. Locate the instrument visor on the instrument bezel and centralise by eye using the bezel alignment mark, 75 mph (120 km/h) speed position and instrument needle centres for alignment, as shown below.



1. Instrument visor
  2. 75 mph (120 km/h) position
  3. Instrument needle centres
  4. Bezel alignment mark
4. Apply firm and even pressure to the entire instrument visor to ensure a good bond is achieved.

### ! Warning

If, after fitment of this accessory kit, you have any doubt about the performance of any aspect of the motorcycle, contact an authorised Triumph dealer and do not ride the motorcycle until the authorised dealer has declared it fit for use. Riding a motorcycle when there is any doubt as to any aspect of the performance of the motorcycle may result in loss of control of the motorcycle leading to an accident.

### ! Warning

Never ride an accessory equipped motorcycle at speeds above 80 mph (130 km/h).

The presence of accessories will cause changes in the stability and handling of the motorcycle. Failure to allow for changes in motorcycle stability may lead to loss of control or an accident.

Remember that the 80 mph (130 km/h) limit will be reduced by the fitting of non-approved accessories, incorrect loading, worn tyres, overall motorcycle condition and poor road or weather conditions.



**Warning**

The motorcycle must not be operated above the legal road speed limit except in closed-course conditions.



**Warning**

Only operate this Triumph motorcycle at high speed in closed-course on road competition or on closed-course racetracks. High speed operation should only be attempted by riders who have been instructed in the techniques necessary for high speed riding and are familiar with the motorcycle's characteristics in all conditions. High speed operation in any other circumstances is dangerous and will lead to loss of motorcycle control and an accident.