



## Accessory Fitting Instructions

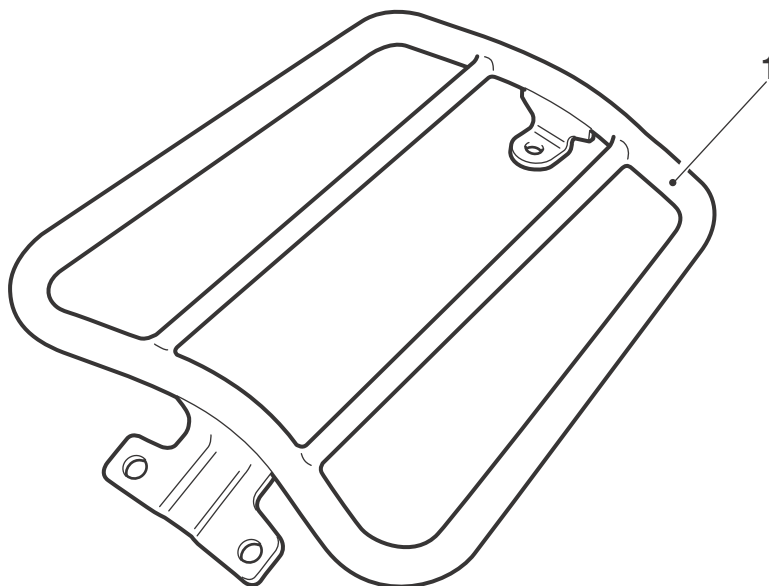
Single Seat Rack	
Kit number	Models Affected
A9730308	Thunderbird, Thunderbird Commander, Thunderbird LT, Thunderbird Storm and Thunderbird Storm ABS

Thank you for choosing this Triumph genuine accessory kit. This accessory kit is the product of Triumph's use of proven engineering, exhaustive testing, and continuous striving for superior reliability, safety and performance.

Completely read all of these instructions before commencing the installation of the accessory kit in order to become thoroughly familiar with the kit's features and the installation process.

These instructions should be considered a permanent part of your accessory kit, and should remain with it even if your accessory equipped motorcycle is subsequently sold.

### Parts Supplied:



1. Single seat rack	1 off
---------------------	-------

## **Warning**

This accessory kit is designed for use on Triumph Thunderbird, Thunderbird Commander, Thunderbird LT, Thunderbird Storm and Thunderbird Storm ABS motorcycles only and should not be fitted to any other manufacturer's motorcycle. Fitting this accessory kit to any other manufacturer's motorcycle will affect the performance, stability and handling of the motorcycle. This may affect the rider's ability to control the motorcycle and could cause an accident.

## **Warning**

Always have Triumph approved parts, accessories and conversions fitted by a trained technician of an authorised Triumph dealer. The fitment of parts, accessories and conversions by a technician who is not of an authorised Triumph dealer may affect the handling, stability or other aspects of the motorcycle's operation which may result in loss of motorcycle control and an accident.

## **Warning**

Throughout this operation, ensure that the motorcycle is stabilised and adequately supported to prevent risk of injury from the motorcycle falling.

## **Warning**

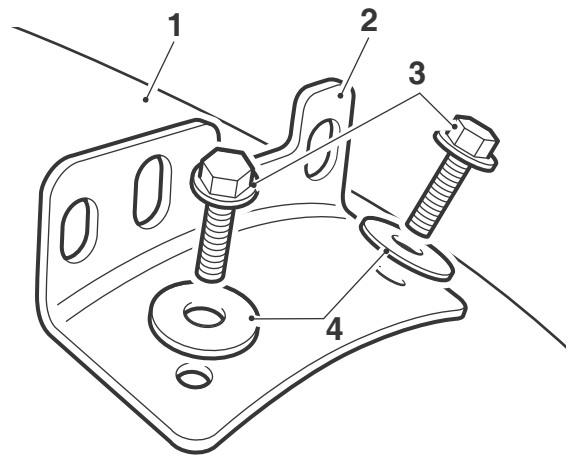
A torque wrench of known accurate calibration must be used when fitting this accessory kit. Failure to tighten any of the fasteners to the correct torque specification may result in loss of motorcycle control and an accident.

## **Warning**

Fitting of this accessory kit requires removal of the original pillion seat. Ensure the Owner's Handbook is removed from the pillion seat and carried with the motorcycle at all times.

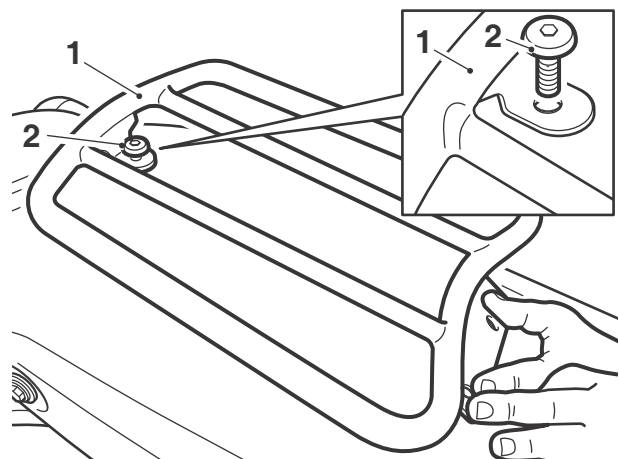
1. Remove both seats as described in the service manual. Retain the fixings for reuse.

2. Remove the pillion seat mounting bracket from the rear fender. Retain the mounting bracket if the motorcycle is to be returned to its original condition. Retain the screws and washers for reuse.



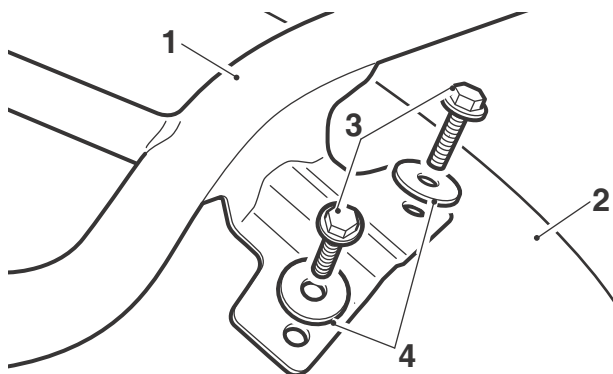
1. Rear fender
2. Mounting bracket, pillion seat
3. Screws
4. Washers

3. Clean the rear fender.
4. Position the luggage rack on the rear fender and secure the rear fixing point with the pillion seat rear fixing. Do not fully tighten at this stage.



1. Luggage rack
2. Fixing

5. Align the remaining fixing holes with the corresponding holes in the rear fender. Secure with the original screws and washers.



- 1. Luggage rack
- 2. Rear fender
- 3. Screws
- 4. Washers

6. Tighten the front fixings to **10 Nm**. Tighten the rear fixing to **9 Nm**.
7. Refit the rider's seat as described in the service manual.

### **Warning**

If, after fitment of this accessory kit, you have any doubt about the performance of any aspect of the motorcycle, contact an authorised Triumph dealer and do not ride the motorcycle until the authorised dealer has declared it fit for use. Riding a motorcycle when there is any doubt as to any aspect of the performance of the motorcycle may result in loss of control of the motorcycle leading to an accident.

### **Warning**

The maximum safe load for the single seat rack is **5 kg (11 lbs)**. Never exceed this loading limit as this may cause the motorcycle to become unstable leading to loss of control and an accident.

### **Warning**

Never ride an accessory equipped motorcycle at speeds above 80 mph (130 km/h).

The presence of accessories will cause changes in the stability and handling of the motorcycle. Failure to allow for changes in motorcycle stability may lead to loss of control or an accident.

Remember that the 80 mph (130 km/h) limit will be reduced by the fitting of non-approved accessories, incorrect loading, worn tyres, overall motorcycle condition and poor road or weather conditions.

### **Warning**

The motorcycle must not be operated above the legal road speed limit except in closed-course conditions.

### **Warning**

Only operate this Triumph motorcycle at high speed in closed-course on road competition or on closed-course racetracks. High speed operation should only be attempted by riders who have been instructed in the techniques necessary for high speed riding and are familiar with the motorcycle's characteristics in all conditions.

High speed operation in any other circumstances is dangerous and will lead to loss of motorcycle control and an accident.