



Accessory Fitting Instructions

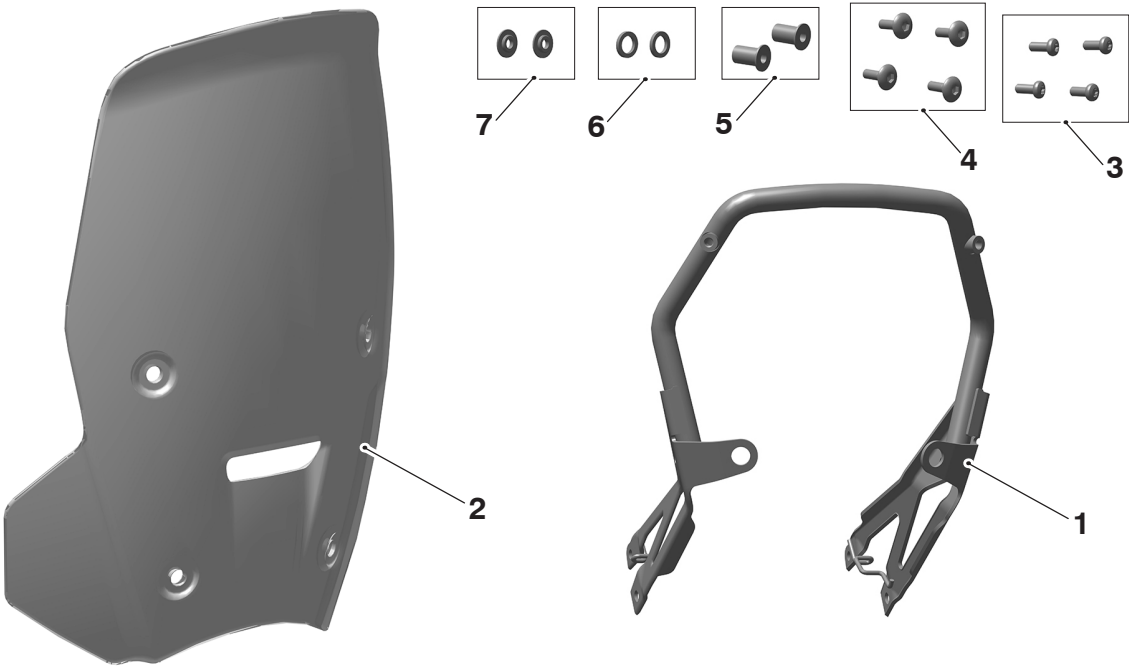
Thank you for choosing this Triumph genuine accessory kit. This accessory kit is the product of Triumph's use of proven engineering, exhaustive testing, and continuous striving for superior reliability, safety and performance.

Completely read all of these instructions before commencing the installation of the accessory kit in order to become thoroughly familiar with the kit's features and the installation process.

These instructions should be considered a permanent part of your accessory kit, and should remain with it even if your accessory equipped motorcycle is subsequently sold.

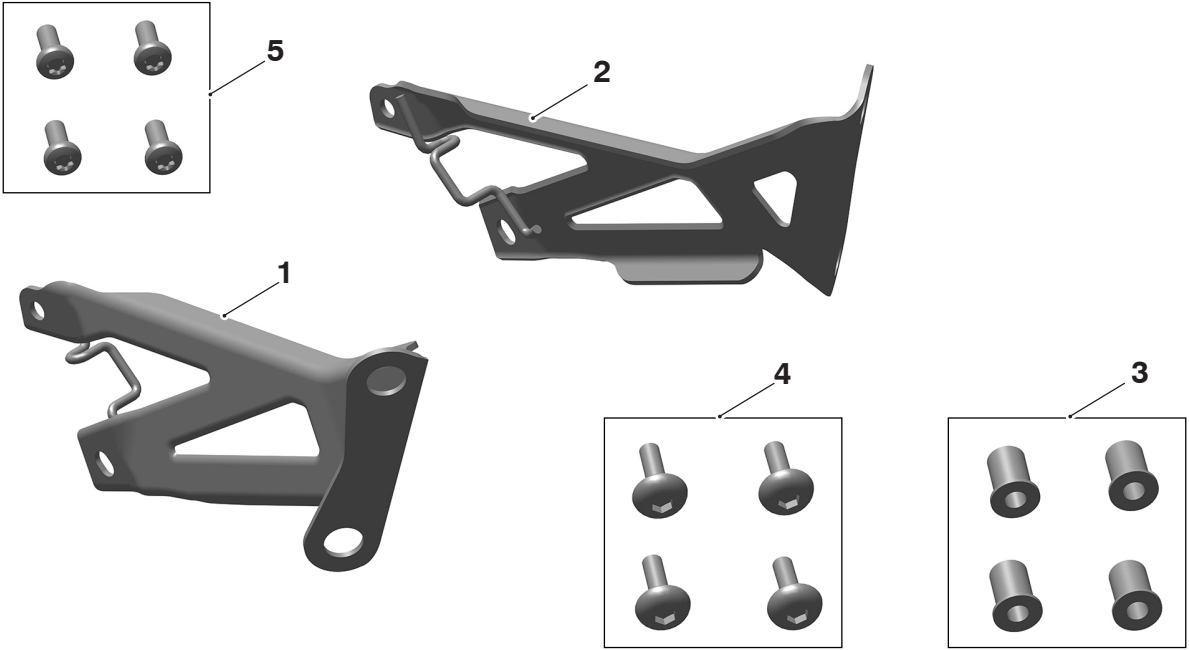
Screen Kits	
Kit Number	Models
Tall Screen Kit	
A9708606	Scrambler 1200 X, Scrambler 1200 XE from VIN BP0885
Flyscreen Mounting Kit	
A9701473	Scrambler 1200 X, Scrambler 1200 XE from VIN BP0885
Flyscreen - Short Dark Tinted	
A9708151	Scrambler 1200 X, Scrambler 1200 XE from VIN BP0885
Flyscreen - Short Clear	
A9708303	Scrambler 1200 X, Scrambler 1200 XE from VIN BP0885

Parts supplied
A9708606



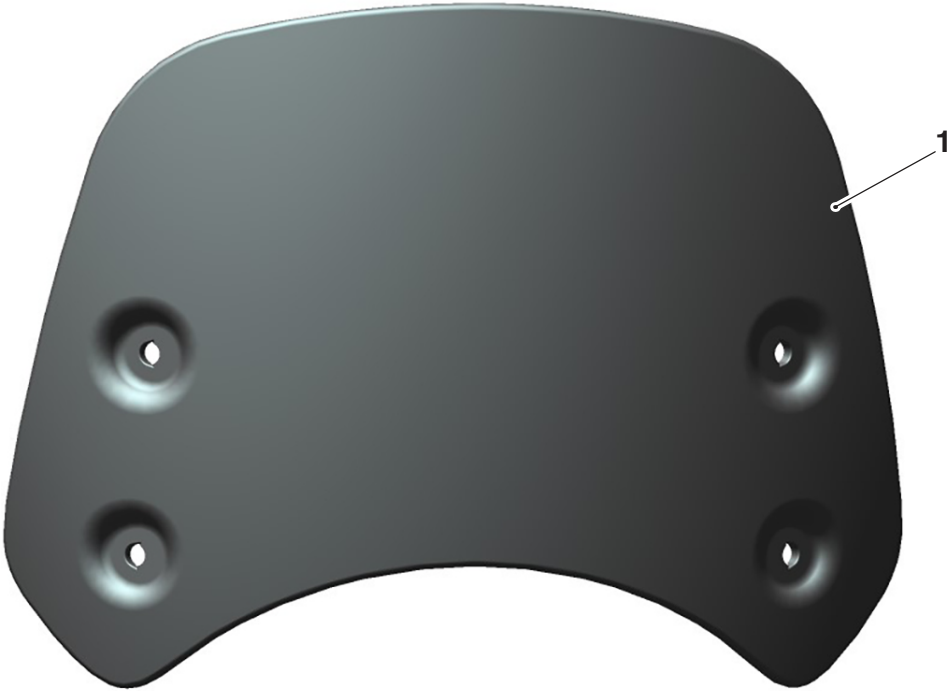
1. Mounting bracket	1 off	5. Well nut, M5 x 16 mm	2 off
2. Flyscreen	1 off	6. Washer, rubber	2 off
3. Fixing, M5 x 12 mm	4 off	7. Sleeve, flanged	2 off
4. Fixing, M5 x 16 mm	4 off		

A9701473



1. Mounting bracket, right hand	1 off	4. Fixing, M5 x 16 mm	4 off
2. Mounting bracket, left hand	1 off	5. Fixing, M5 x 12 mm	4 off
3. Well Nut, M5 x 16 mm	4 off		

A9708151, A9708303



1. Flyscreen	1 off
--------------	-------

⚠ WARNING

Fit only genuine Triumph accessories to those models approved by Triumph as listed in the associated Triumph fitting instructions.

The accessory kits covered in this instruction are designed for use on specific models of Triumph motorcycle. The accessory kits and the models applicable are listed at the start of the instruction. They should never be fitted to any other Triumph model or to any other manufacturer's motorcycle.

Fitting an accessory kit to a Triumph model not listed, or to any other manufacturer's motorcycle, will affect the performance, stability and handling of the motorcycle.

Failure to follow the advice above may lead to loss of motorcycle control which could result in serious injury or death.

⚠ WARNING

Always have Triumph approved parts, accessories and conversions fitted by a competent person with the specialist knowledge and technical understanding of motorcycles, such as an authorised Triumph dealer.

The fitment of parts, accessories and conversions by a person without the specialist knowledge and technical understanding of motorcycles may affect the handling, stability or other aspects of the motorcycle's operation.

Failure to follow the advice above may lead to loss of motorcycle control which could result in serious injury or death.

⚠ WARNING

A torque wrench of known accurate calibration must be used when fitting this accessory kit.

Failure to tighten any of the fasteners to the correct torque specification may affect motorcycle performance, handling and stability.

Failure to follow the advice above may lead to loss of motorcycle control which could result in serious injury or death.

⚠ WARNING

Make sure the motorcycle is stabilised and adequately supported.

Do not support the motorcycle on any ancillary component, the exhaust system or any other non structural parts of the motorcycle frame.

A correctly supported motorcycle will help prevent it from falling.

An unstable motorcycle may fall resulting in motorcycle damage, serious injury or death.

NOTICE

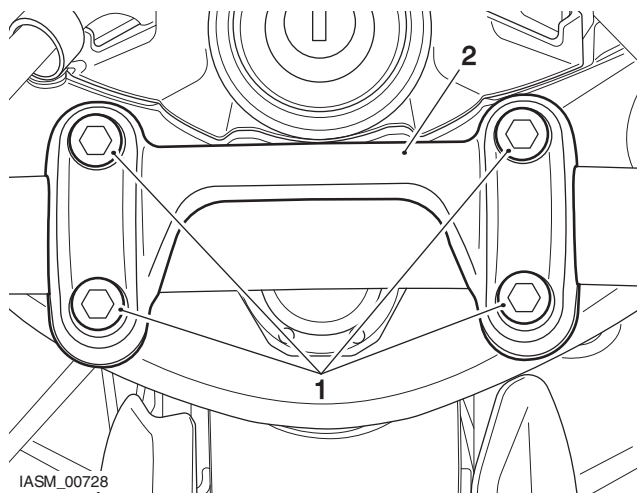
Triumph offers a broad range of approved genuine accessories for your motorcycle.

We cannot therefore cover all possible equipment variations in these instructions. For removal and installation of Triumph Genuine Accessories, always refer to the instructions supplied with the respective accessory kit.

To obtain additional copies of any Triumph accessory instructions, visit www.triumphinstructions.com or contact your authorised Triumph dealer.

Fitment of Screen Mounting Bracket

1. Remove the seat, as described in the Service Manual.
2. Disconnect the battery as described in the Service Manual.
3. Remove the headlight assembly, as described in the Service Manual.
4. Raise the front end of the motorcycle.
5. Support the handlebars and remove the handlebar clamp fixings.



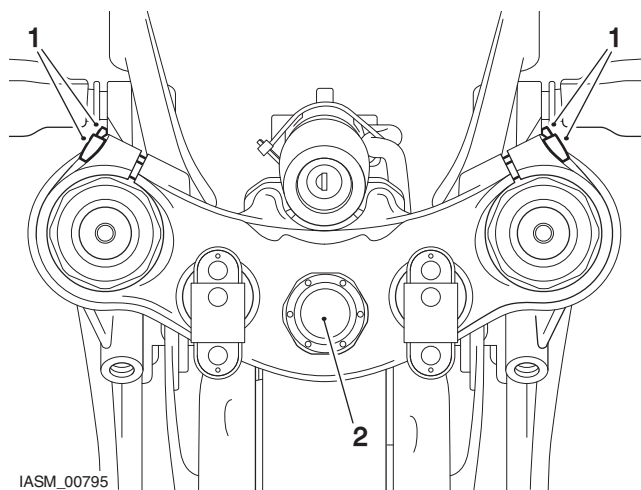
IASM_00728

1. Fixings

2. Handlebar clamp

6. As an assembly, raise the handlebars until they are clear of the upper yoke. Rest the assembly forward of the steering stem so that access to the headstock top nut is not restricted. Make sure that the master cylinder stays upright.
7. Loosen the upper yoke pinch bolts.

8. Loosen and remove the top nut and washer from the steering stem.



IASM_00795

1. Upper yoke pinch bolts
2. Top nut

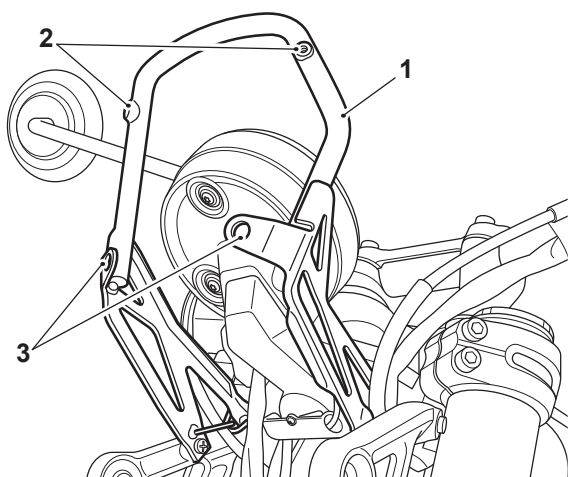
NOTICE

Make a note of the position of the top yoke before raising.

9. Raise the top yoke until the rear screen mounting bracket fixings are accessible. Do not fully remove the top yoke.
10. Remove the wire cable guide from both sides of the headlight mounting bracket. Retain the wire cable guide and fixings for reuse if the motorcycle is to be returned to its original condition.

Kit A9708606 only

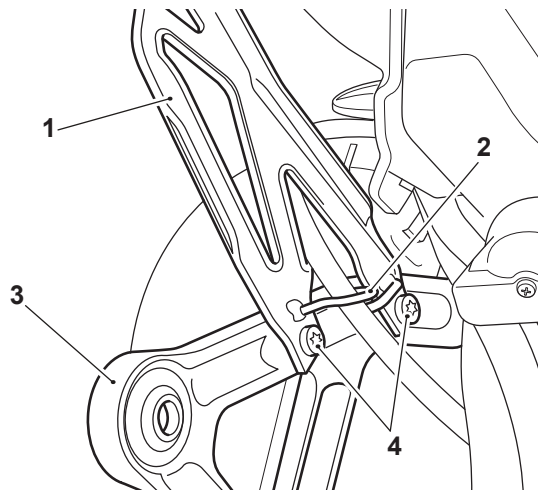
11. Collect the screen mounting bracket from the kit and orientate on the motorcycle as shown below.



TP0465

1. Screen mounting bracket
2. Upper fixing location
3. Lower fixing location

12. Make sure the front brake hose is routed through the right hand side bracket cable guide, and the clutch cable is routed through the left hand side bracket cable guide before attaching the fixings.
13. Fit two M5 x 12 mm fixings from the kit to the right hand side and tighten the fixings to **3 Nm** (right side shown).



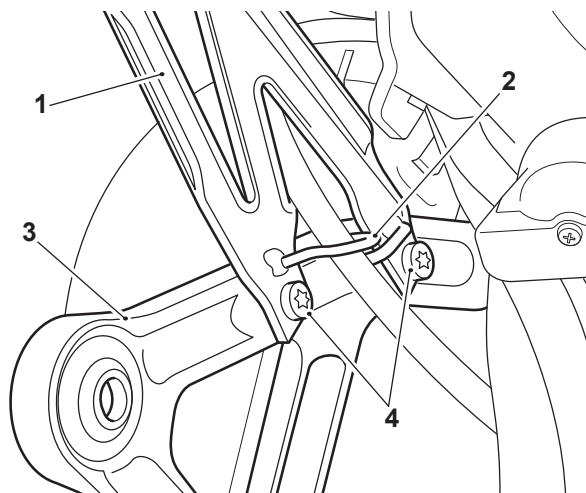
TP0459

1. Screen mounting bracket
2. Bracket cable guide
3. Headlight mounting bracket
4. Fixings

14. Repeat step 13 for the left hand side bracket fixings.

Kit A9701473 only

15. Collect the right hand bracket from the kit and orientate the bracket as shown and align the fixing positions.



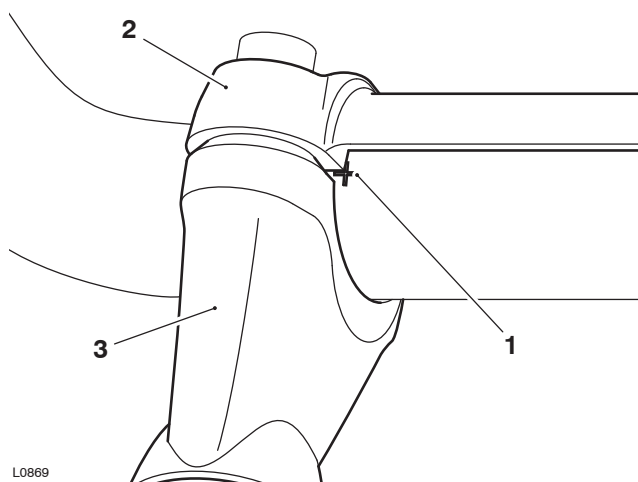
1. Screen mounting bracket
2. Bracket cable guide
3. Headlight mounting bracket
4. Fixings

16. Make sure the front brake hose is fed through the bracket cable guide before attaching the fixings.
17. Fit two M5 x 12 mm fixings from the kit. Tighten the fixings to **3 Nm**.

18. Repeat step 17 for the left hand side flyscreen mounting bracket, making sure the clutch cable is fed through the bracket cable guide before attaching the fixings.

All kits

19. Lower the top yoke to its original position.
20. Fit the top nut and washer, and tighten the top nut to **120 Nm**.
21. Tighten the upper yoke pinch bolts, upper first, to **25 Nm**.
22. Locate the handlebars onto the risers. Fit the clamp and the fixings but do not fully tighten at this stage.
23. Rotate the handlebar so that the alignment mark on the handlebar aligns with the bottom face of the handlebar clamp.



1. Alignment mark
2. Handlebar clamp
3. Right riser

24. Tighten the handlebar clamp fixings, front ones first, to **24 Nm**.

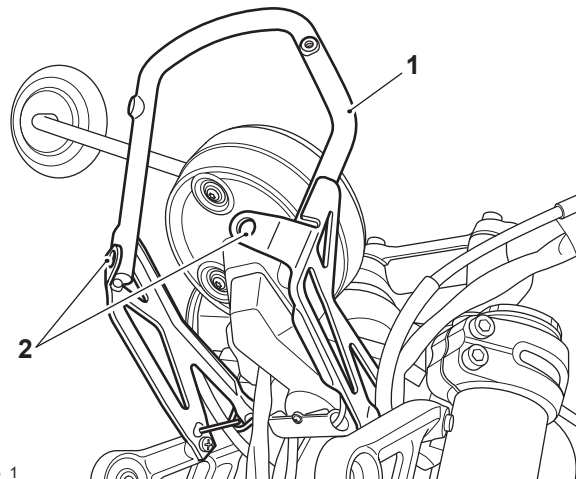
Fitment of the Screens

⚠ CAUTION

Care must be taken when fitting the new flyscreen. Damage to the flyscreen surfaces could result from inadequate care during the assembly process.

Fitment of Tall Screen

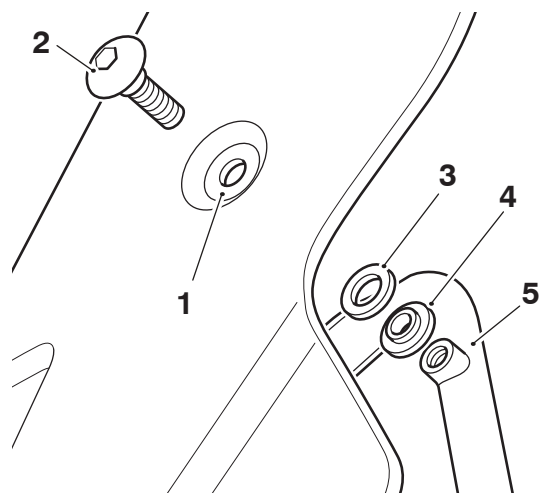
1. Collect the well nuts from the kit and fit them to the lower fixing holes on the screen mounting bracket, as shown.



TP0465_1

1. Screen mounting bracket
2. Lower fixing holes

2. Align the screen fixing holes with the upper and lower fixing holes, and fit the M5 x 16 mm fixings.

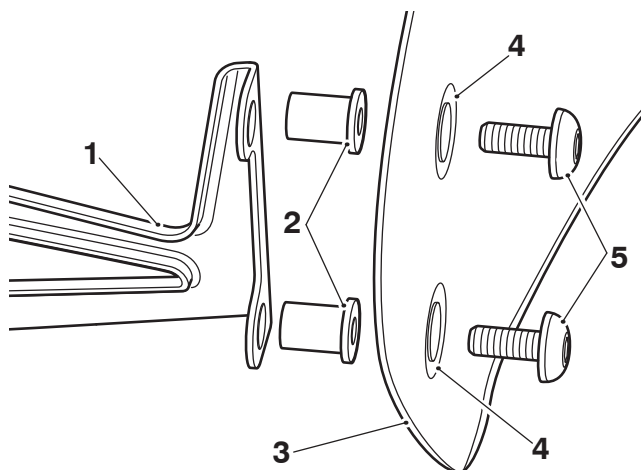


1. Screen upper mounting hole, left hand side
2. Fixing, M5 x 16 mm
3. Rubber washer
4. Flanged sleeve
5. Screen support frame upper mounting

3. Tighten the fixings to **3 Nm**.
4. Refit the headlight, as described in the Service Manual.
5. Reconnect the battery as described in the Service Manual.
6. Adjust the alignment of the headlight, as described in the Service Manual.
7. Refit the seat, as described in the Service Manual.

Fitment of Flyscreen

8. Align the well nuts and flyscreen with the flyscreen mounting brackets, as shown.



1. Flyscreen mounting bracket

2. Well nut

3. Flyscreen

4. Screen mounting hole

5. Fixing, M5 x 14 mm

9. Fit the M5 x 14 mm fixings and tighten to **1.5 Nm**.
10. Reconnect the battery as described in the Service Manual.
11. Adjust the alignment of the headlight, as described in the Service Manual.
12. Refit the seat, as described in the Service Manual.

⚠ WARNING

Never attempt to clean the windscreen while riding the motorcycle.

Removal of the rider's hands from the handlebars while riding the motorcycle will diminish the ability of the rider to maintain control of the motorcycle.

Attempting to clean the windscreen while riding the motorcycle may lead to loss of motorcycle control which could result in serious injury or death.

⚠ WARNING

The screen is not a substitute for a safety helmet or eye protection.

Screens are designed to provide wind protection and increased riding comfort. They are not designed to provide protection in the event of a collision with another vehicle, the road, birds or any other object.

When riding a motorcycle both rider and passenger must always wear a safety helmet, eye protection, gloves and trousers which are close fitting around the knees and ankle.

Full protection is not possible, but wearing the correct protective clothing may reduce the risk of injury when riding.

⚠ WARNING

After fitting the accessory kit the motorcycle will exhibit new handling characteristics.

Operate the motorcycle in a safe area free from traffic to gain familiarity with any new characteristics.

Operation of the motorcycle when not familiar with any new handling characteristics may lead to loss of motorcycle control which could result in serious injury or death.

⚠ WARNING

If, after fitting this accessory kit, you have any doubt about the performance of any aspect of the motorcycle, contact a competent person with the specialist knowledge and technical understanding of motorcycles, such as an authorised Triumph dealer.

Riding a motorcycle when there is any doubt as to any aspect of the performance of the motorcycle may lead to loss of motorcycle control which could result in serious injury or death.

⚠ WARNING

Never ride an accessory-equipped motorcycle at speeds above 80 mph (130 km/h).

Remember that the 80 mph (130 km/h) limit will be reduced by the fitting of non-approved accessories, incorrect loading, worn tyres, overall motorcycle condition and poor road or weather conditions.

The presence of accessories will cause changes in the stability and handling of the motorcycle. Failure to allow for changes in motorcycle stability may lead to loss of motorcycle control which could result in serious injury or death.

⚠ WARNING

High-speed operation should only be attempted by riders who have been instructed in the techniques necessary for high-speed riding and are familiar with the motorcycle's characteristics in all conditions.

Only operate this Triumph motorcycle at high speed in closed-course, on-road competition or on closed-course racetracks.

⚠ WARNING Continued

High-speed operation in any other circumstances is dangerous and may lead to loss of motorcycle control which could result in serious injury or death.

NOTICE

The motorcycle must not be operated above the legal road speed limit except in closed-course conditions.