



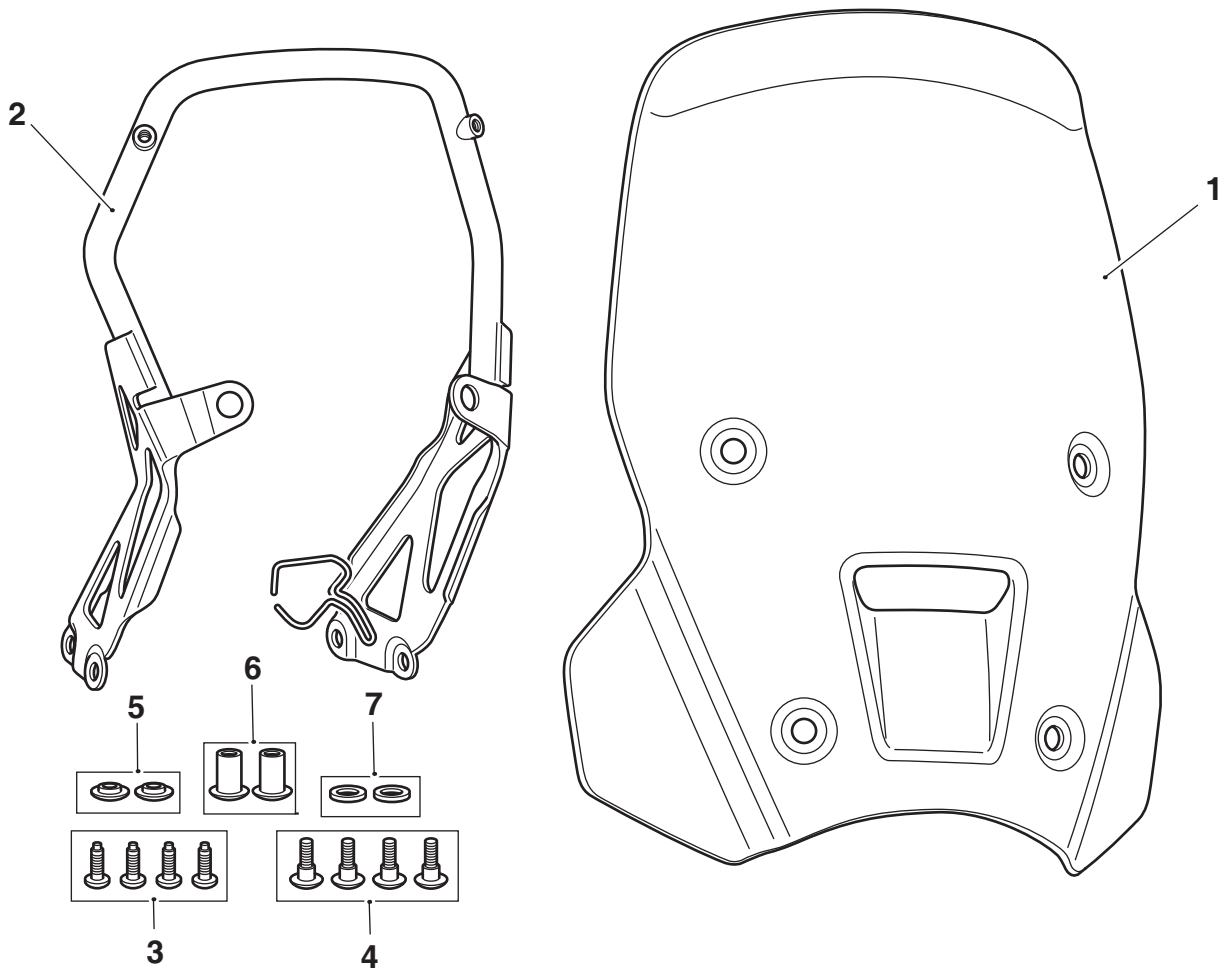
Accessory Fitting Instructions

Touring Screen Kit	
Kit Number	Models Affected
A9708601	Scrambler 1200 XC from VIN AE9098, Scrambler 1200 XE from VIN AC8499 to VIN BN8495

Completely read all of these instructions before commencing the installation of the accessory kit in order to become thoroughly familiar with the kit's features and the installation process.

These instructions should be considered a permanent part of your accessory kit, and should remain with it even if your accessory equipped motorcycle is subsequently sold.

Parts Supplied:



1. Screen	1 off	5. Flanged sleeve	2 off
2. Screen support frame	1 off	6. Well Nut, M5	2 off
3. Fixing, M5 x 12 mm	4 off	7. Rubber washer	2 off
4. Fixing, M5 x 16 mm	4 off		



Warning

Fit only genuine Triumph accessories to those models approved by Triumph as listed in the associated Triumph fitting instructions. The accessory kits covered in this instruction are designed for use on specific models of Triumph motorcycle. The accessory kits and the models applicable are listed at the start of the instruction. They should never be fitted to any other Triumph model or to any other manufacturer's motorcycle. Fitting an accessory kit to a Triumph model not listed, or to any other manufacturer's motorcycle will affect the performance, stability and handling of the motorcycle. This may affect the rider's ability to control the motorcycle and could result in an accident causing severe injuries or death.



Warning

Always have Triumph approved parts, accessories and conversions fitted by a trained technician of an authorised Triumph dealer. The fitment of parts, accessories and conversions by a technician who is not of an authorised Triumph dealer may affect the handling, stability or other aspects of the motorcycle's operation which may result in loss of motorcycle control and an accident.



Warning

Make sure the motorcycle is supported. A correctly supported motorcycle will help prevent it from falling. An unstable motorcycle may fall, causing injury to the operator or damage to the motorcycle.



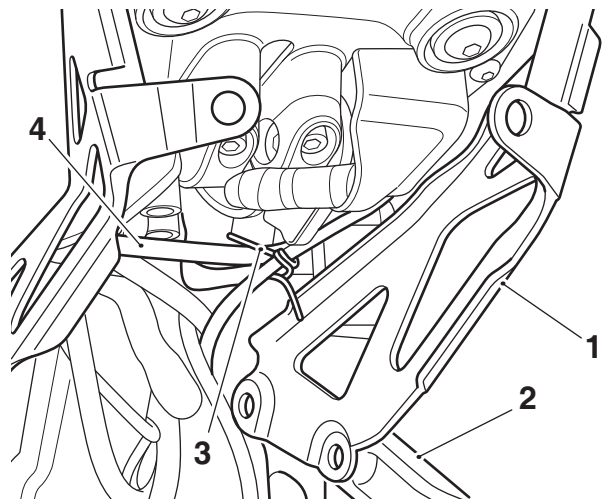
Warning

A torque wrench of known accurate calibration must be used when fitting this accessory kit. Failure to tighten any of the fasteners to the correct torque specification may affect motorcycle performance, handling and stability. This may result in loss of motorcycle control and an accident.

Note:

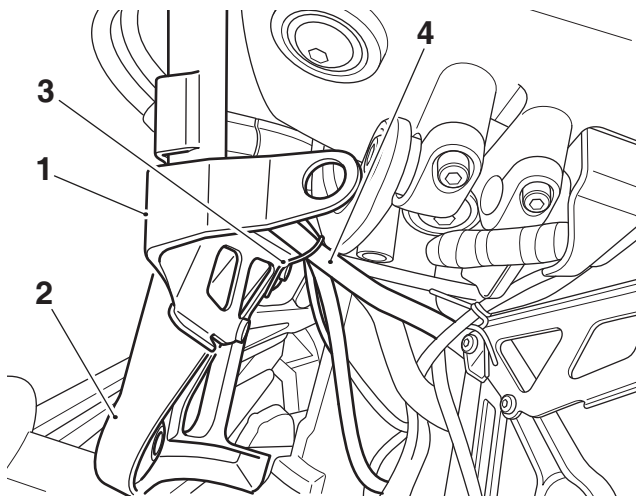
- Triumph offers a broad range of approved genuine accessories for your motorcycle. We cannot therefore cover all possible equipment variations in these instructions. For removal and installation of Triumph Genuine Accessories, always refer to the instructions supplied with the respective accessory kit. To obtain additional copies of any Triumph accessory instructions, visit www.triumphinstructions.com or contact your authorised Triumph dealer.

1. Remove the seat, as described in the Service Manual.
2. Disconnect the battery as described in the Service Manual.
3. Remove the headlight assembly, as described in the Service Manual.
4. Release all harnesses and hoses from the cable guide on the left hand headlight mounting bracket.
5. Remove the cable guide from the left hand headlight mounting bracket. Retain the cable guide and fixings for reuse if the motorcycle is to be returned to its original condition.
6. Collect the screen support frame from the kit and orientate the screen support frame bracket as shown. Before aligning the screen support frame fixing positions with the headlight mounting bracket feed all harnesses and hoses through the cable guides on the screen support frame.



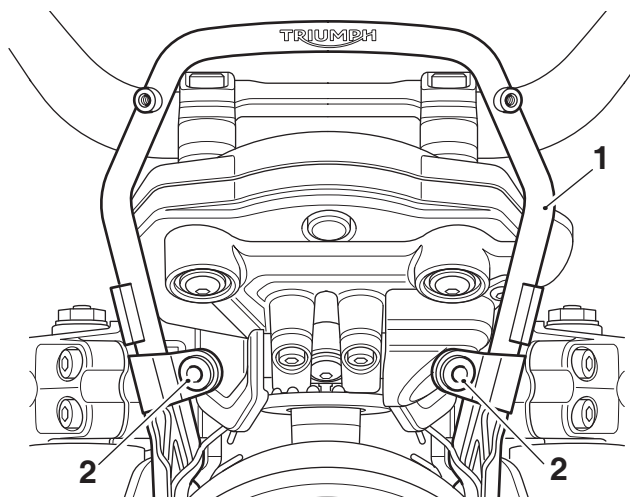
1. Screen support frame bracket, left hand
2. Headlight mounting bracket
3. Cable guide
4. Switch housing harnesses

7. Locate the left hand screen support frame bracket on the left hand headlight bracket and align the fixing positions. Fit two M5 x 12 mm fixings from the kit. Tighten the fixings to **3 Nm**.
8. Repeat step 6 and 7 for the right hand side.



1. Screen support frame bracket, right hand
2. Headlight mounting bracket
3. Cable guide
4. Switch housing harnesses

9. Refit the headlight, as described in the Service Manual.
10. Collect the two Well Nuts from the kit and fit them in to the screen support frame, as shown.



1. Screen support frame
2. Well Nuts

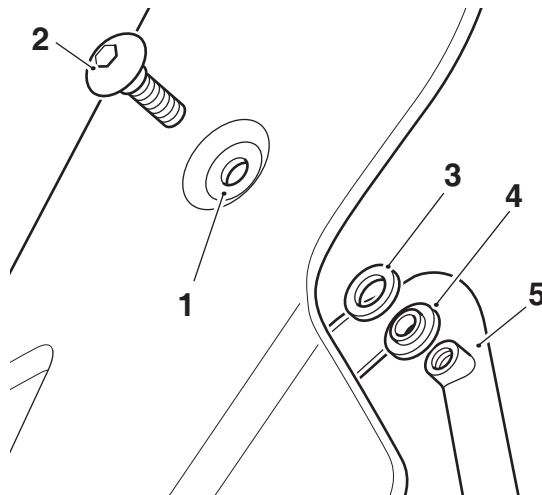


Caution

Care must be taken when fitting the new touring screen. Damage to the screen surfaces could result from inadequate care during the assembly process.

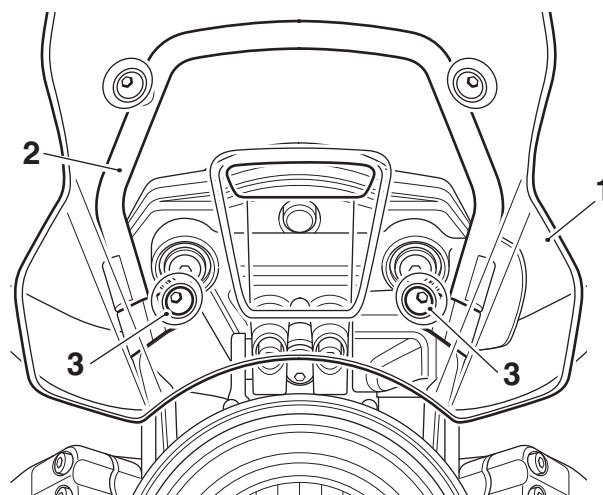
11. Collect the screen, rubber washers, flange sleeves and M5 x 16 mm fixings from the kit.

12. Fit an M5 x 16 mm fixing through the upper mounting hole on the left hand side of the screen. Position a rubber washer and flange sleeve on to the fixing as shown and align the fixing with the screen support frame upper mounting on the left hand side of the motorcycle. Do not fully tighten the fixing at this stage.



1. Screen upper mounting hole, left hand side
2. Fixing, M5 x 16 mm
3. Rubber washer
4. Flanged sleeve
5. Screen support frame upper mounting

13. Repeat step 12 for the right hand side.
14. Fit the remaining two M5 x 16 mm fixings through the lower mounting holes in the screen and align with the Well Nuts in the screen support frame. Do not fully tighten the fixings at this stage.



1. Screen
2. Screen support frame
3. Fixings, M6 x 16 mm

15. Tighten the upper screen fixings to **3 Nm**.
16. Tighten the lower screen fixings to **3 Nm**.

17. Reconnect the battery as described in the Service Manual.
18. Adjust the alignment of the headlight, as described in the Service Manual.
19. Refit the seat, as described in the Service Manual.



Warning

After fitting the flyscreen the motorcycle will exhibit new handling characteristics. Operate the motorcycle in a safe area free from traffic to gain familiarity with any new characteristics. Operation of the motorcycle when not familiar with any new handling characteristics may result in loss of motorcycle control and an accident.



Warning

Never attempt to clean the touring screen while riding the motorcycle. Removal of the rider's hands from the handlebars while riding the motorcycle will diminish the ability of the rider to maintain control of the motorcycle. Attempting to clean the touring screen while riding the motorcycle may result in loss of motorcycle control and an accident.



Warning

The touring screen is not a substitute for a safety helmet or eye protection. Touring screens are designed to provide wind protection and increased riding comfort. They are not designed to provide protection in the event of a collision with another vehicle, the road, birds or any other object. When riding a motorcycle both rider and passenger must always wear a safety helmet, eye protection, gloves and trousers (close fitting around the knees and ankle). Although full protection is not possible, wearing correct protective clothing can reduce the risk of injury when riding.



Warning

If, after fitting this accessory kit, you have any doubt about the performance of any aspect of the motorcycle, contact an authorised Triumph dealer and do not ride the motorcycle until the authorised dealer has declared it fit for use. Riding a motorcycle when there is any doubt as to any aspect of the performance of the motorcycle may result in loss of motorcycle control and an accident.



Warning

Never ride an accessory-equipped motorcycle at speeds above 80 mph (130 km/h).

The presence of accessories will cause changes in the stability and handling of the motorcycle. Failure to allow for changes in motorcycle stability may result in loss of motorcycle control and an accident.

Remember that the 80 mph (130 km/h) limit will be reduced by the fitting of non-approved accessories, incorrect loading, worn tyres, overall motorcycle condition and poor road or weather conditions.



Warning

The motorcycle must not be operated above the legal road speed limit except in closed-course conditions.



Warning

Only operate this Triumph motorcycle at high speed in closed-course, on-road competition or on closed-course racetracks. High-speed operation should only be attempted by riders who have been instructed in the techniques necessary for high-speed riding and are familiar with the motorcycle's characteristics in all conditions.

High-speed operation in any other circumstances is dangerous and may result in loss of motorcycle control and an accident.