

## Accessory Fitting Instructions

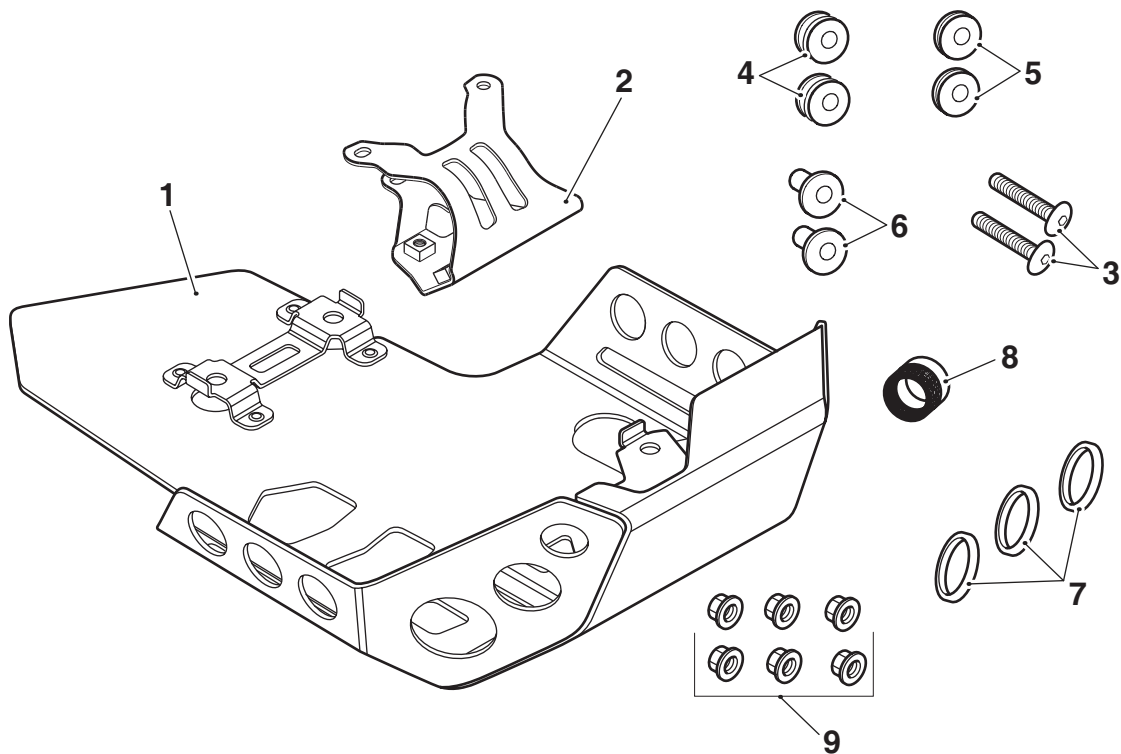
Aluminium Sump Guard Kit	
Kit Number	Models Affected
A9708392	Tiger XR, Tiger XR <sub>T</sub> , Tiger XR <sub>x</sub> and Tiger XC
A9708433	Tiger XR, Tiger XR <sub>T</sub> , Tiger XR <sub>x</sub> , Tiger XC, Tiger 800 XR, Tiger 800 XR <sub>T</sub> , Tiger 800 XR <sub>x</sub> , Tiger 800 XR <sub>x</sub> LRH

Thank you for choosing this Triumph genuine accessory kit. This accessory kit is the product of Triumph's use of proven engineering, exhaustive testing, and continuous striving for superior reliability, safety and performance.

Completely read all of these instructions before commencing the installation of the accessory kit in order to become thoroughly familiar with the kit's features and the installation process.

These instructions should be considered a permanent part of your accessory kit, and should remain with it even if your accessory equipped motorcycle is subsequently sold.

### Parts Supplied



1. Sump guard	1 off	6. Flanged sleeve	2 off
2. Front mounting bracket (A9708392 only)	1 off	7. Header gasket	3 off
3. Screw, M6 x 25 mm	2 off	8. Exhaust gasket	1 off
4. Grommet	2 off	9. Lock nut	6 off
5. Split bush	2 off		

**Warning**

The accessory kits covered in this instruction are designed for use on specific models of Triumph motorcycle. The accessory kits and the models applicable are listed at the start of the instruction. They should not be fitted to any other Triumph model or to any other manufacturer's motorcycle. Fitting an accessory kit to a Triumph model not listed, or to any other manufacturer's motorcycle will affect the performance, stability and handling of the motorcycle. This may result in loss of motorcycle control and an accident.

**Warning**

Always have Triumph approved parts, accessories and conversions fitted by a trained technician of an authorised Triumph dealer. The fitment of parts, accessories and conversions by a technician who is not of an authorised Triumph dealer may affect the handling, stability or other aspects of the motorcycle's operation which may result in loss of motorcycle control and an accident.

**Warning**

Throughout this operation, ensure that the motorcycle is stabilised and adequately supported to prevent risk of injury from the motorcycle falling.

**Warning**

A torque wrench of known accurate calibration must be used when fitting this accessory kit. Failure to tighten any of the fasteners to the correct torque specification may affect motorcycle performance, handling and stability. This may result in loss of motorcycle control and an accident.

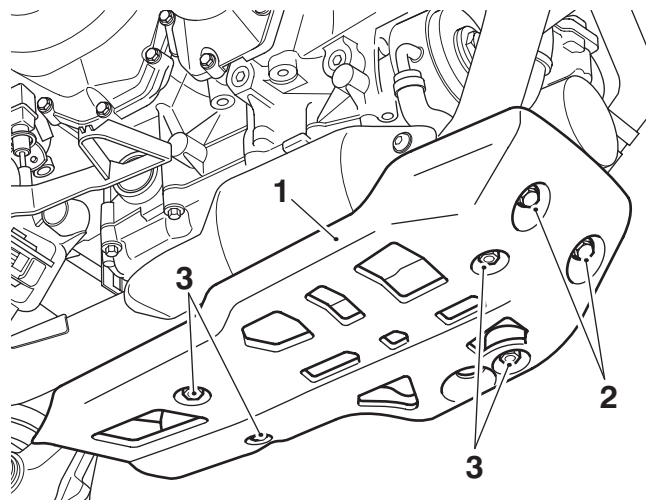
**Warning**

If the engine has recently been running, the exhaust system will be hot. Before working on or near the exhaust system, allow sufficient time for the system to cool, as touching any part of a hot exhaust could cause burn injuries.

**Note:**

- Triumph offers a broad range of approved genuine accessories for your motorcycle. We cannot therefore cover all possible equipment variations in these instructions. For removal and installation of Triumph Genuine Accessories always refer to the instructions supplied with the respective accessory kit. To obtain additional copies of any Triumph accessory instructions, visit [www.triumphinstructions.com](http://www.triumphinstructions.com) or contact your authorised Triumph dealer.

- Place the motorcycle on a paddock stand.
- Remove the sump guard. Do not remove the rubber mountings. Retain the sump guard and the two front bolts for reuse if the motorcycle is to be returned to its original condition. Retain the lock nuts for reuse.

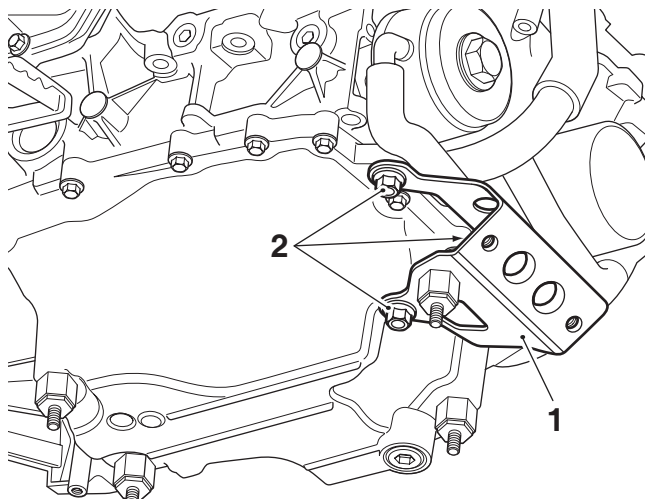


- Sump guard
- Bolts
- Lock nuts

**Note:**

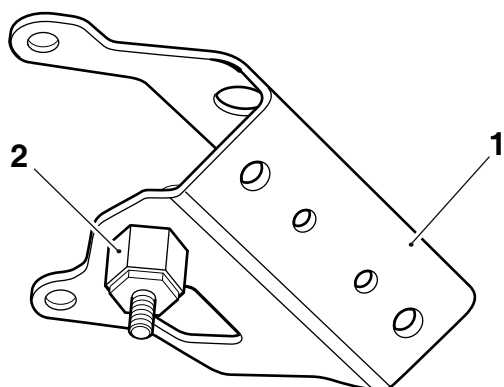
- For models upto VIN 734863 continue from step 3. For models from VIN 734864 continue from step 10.
- Remove the exhaust system, as described in the Service Manual. Discard the exhaust gasket, header gaskets and header pipe lock nuts.

4. Remove the sump guard front mounting bracket. Retain the three fixings for reuse.



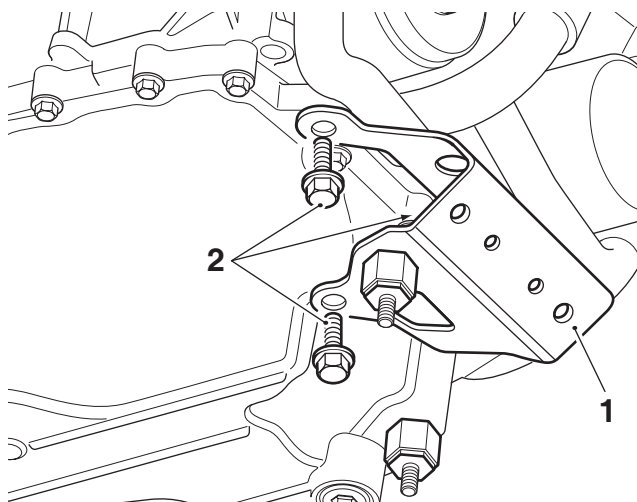
1. Sump guard front mounting bracket
2. Fixings

5. Remove the rubber mounting from the sump guard front mounting bracket and retain for reuse. Discard the mounting bracket.
6. Fit the rubber mounting to the new front sump guard mounting bracket from the kit, in the position shown below. Tighten the rubber mounting to **3 Nm**.



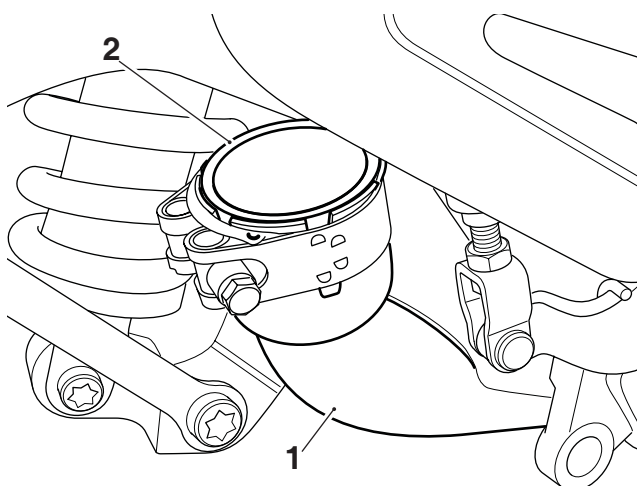
1. Sump guard front mounting bracket
2. Rubber mounting

7. Fit the new sump guard front mounting bracket as shown and secure with the three original fixings. Tighten the fixings to **15 Nm**.



1. Sump guard front mounting bracket
2. Fixings

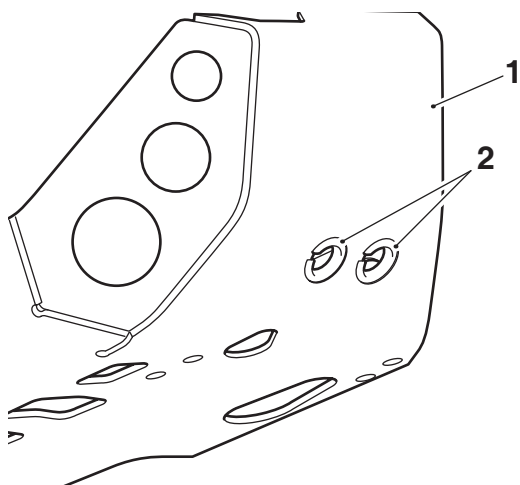
8. Fit the new exhaust gasket provided into the exhaust intermediate pipe with the textured edge of the gasket facing the rear of the motorcycle.



1. Intermediate pipe
2. Gasket

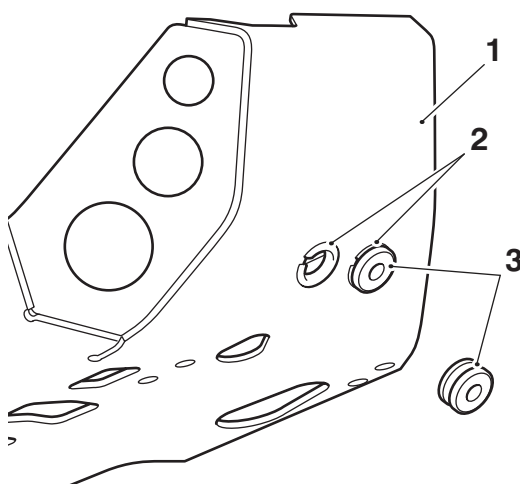
9. Refit the exhaust system, using the new header gaskets and lock nuts provided, as described in the Service Manual.

10. Collect the new sump guard and split bushes from the kit. Insert a split bush to each front hole of the sump guard, in the orientation shown below.



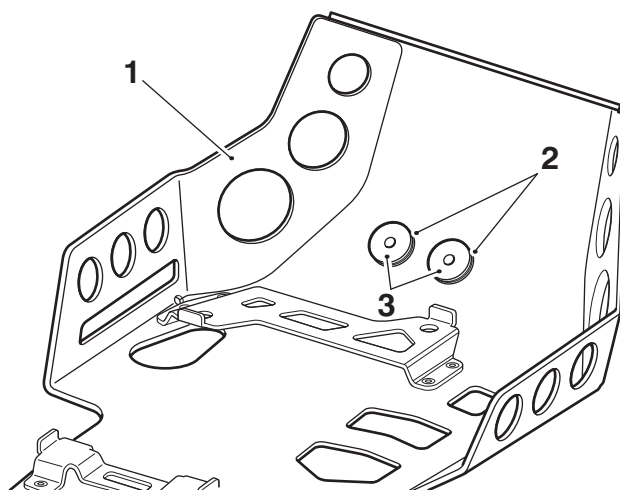
1. Sump guard  
2. Split bush

11. Insert a grommet from the kit through each split bush.



1. Sump guard  
2. Split bush  
3. Grommet

12. Fit a flanged sleeve to each grommet in the orientation shown below.

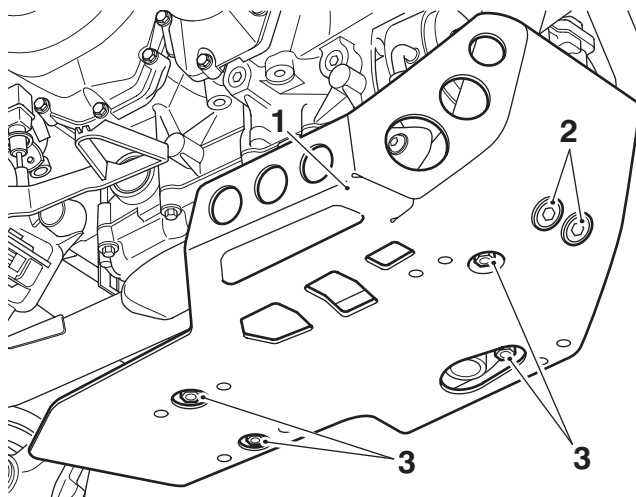


1. Sump guard  
2. Grommet  
3. Flanged sleeves

**Note:**

- Lock nuts can be reused, providing resistance can be felt when the locking portion passes over the thread of the bolt or stud.
- Always use the correct replacement lock nut as recommended in the Triumph parts catalogue.

13. Fit the sump guard, taking care that the oxygen sensor harness is not trapped. Secure with the four original lock nuts and two M6 x 25 mm screws from the kit. Do not tighten the fixings at this stage.



1. Sump guard  
2. Screws, M6 x 25 mm  
3. Lock nuts

14. Tighten the four lock nuts to **6 Nm**.  
15. Tighten the two M6 x 25 mm screws to **9 Nm**.  
16. Remove the motorcycle from the paddock stand and place on the side stand.

 **Caution**

The sump guard does not provide complete protection from damage to the underside of the motorcycle. Care must be taken to avoid contact between the underside of the motorcycle and any hard or sharp objects. Damage to the underside of the motorcycle may occur if it is allowed to come in to contact with any hard or sharp objects.

 **Caution**

Do not support or jack up the motorcycle using the sump guard. Damage to the sump guard or the motorcycle itself will result if this caution is ignored.

 **Warning**

If, after fitment of this accessory kit, you have any doubt about the performance of any aspect of the motorcycle, contact an authorised Triumph dealer and do not ride the motorcycle until the authorised dealer has declared it fit for use. Riding a motorcycle when there is any doubt as to any aspect of the performance of the motorcycle may result in loss of control of the motorcycle leading to an accident.

 **Warning**

Never ride an accessory equipped motorcycle at speeds above 80 mph (130 km/h).  
The presence of accessories will cause changes in the stability and handling of the motorcycle. Failure to allow for changes in motorcycle stability may lead to loss of control or an accident.  
Remember that the 80 mph (130 km/h) limit will be reduced by the fitting of non-approved accessories, incorrect loading, worn tyres, overall motorcycle condition and poor road or weather conditions.

 **Warning**

The motorcycle must not be operated above the legal road speed limit except in closed-course conditions.

 **Warning**

Only operate this Triumph motorcycle at high speed in closed-course, on-road competition or on closed-course racetracks. High-speed operation should only be attempted by riders who have been instructed in the techniques necessary for high-speed riding and are familiar with the motorcycle's characteristics in all conditions.

High-speed operation in any other circumstances is dangerous and will lead to loss of motorcycle control and an accident.