



Accessory Fitting Instructions

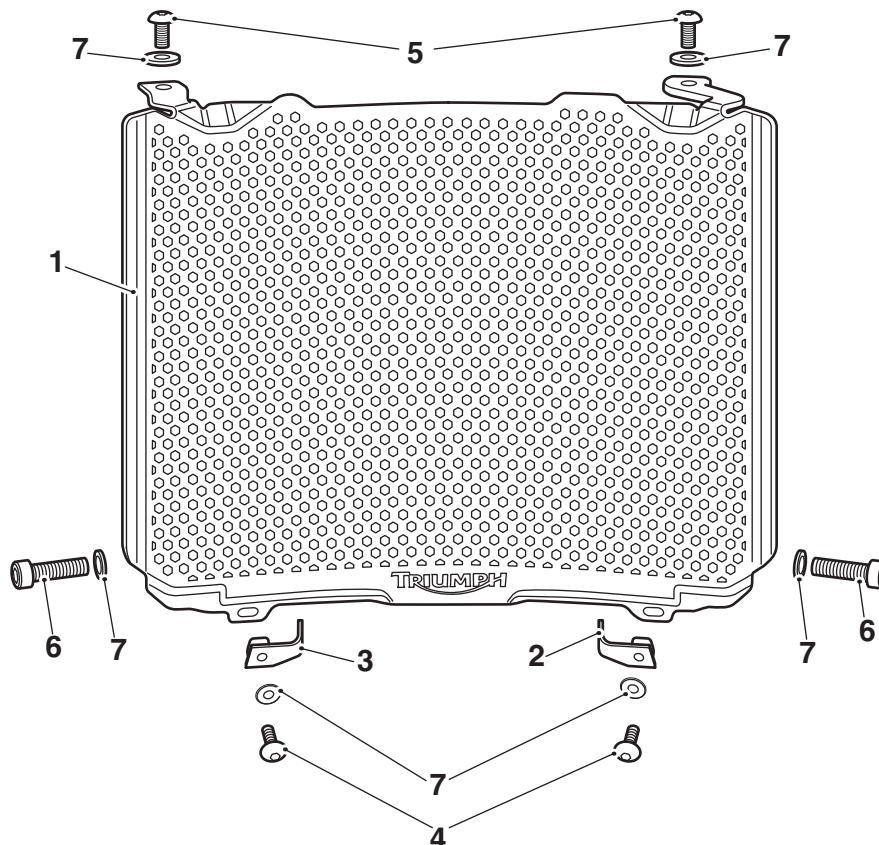
Radiator Guard Kit	
Kit Number	Models Affected
A9708364	Speed Triple S, Speed Triple R from VIN 735337, Speed Triple RS

Thank you for choosing this Triumph genuine accessory kit. This accessory kit is the product of Triumph's use of proven engineering, exhaustive testing, and continuous striving for superior reliability, safety and performance.

Completely read all of these instructions before commencing the installation of the accessory kit in order to become thoroughly familiar with the kit's features and the installation process.

These instructions should be considered a permanent part of your accessory kit, and should remain with it even if your accessory equipped motorcycle is subsequently sold.

Parts Supplied



T2051

1. Radiator guard	1 off	5. Bolt, M6 x 16 mm	2 off
2. Lower bracket (left hand)	1 off	6. Bolt, M6 x 30 mm	2 off
3. Lower bracket (right hand)	1 off	7. Washer, M6	6 off
4. Bolt, M6 x 12 mm	2 off		

Warning

The accessory kits covered in this instruction are designed for use on specific models of Triumph motorcycle. The accessory kits and the models applicable are listed at the start of the instruction. They should not be fitted to any other Triumph model or to any other manufacturer's motorcycle. Fitting an accessory kit to a Triumph model not listed, or to any other manufacturer's motorcycle will affect the performance, stability and handling of the motorcycle. This may affect the rider's ability to control the motorcycle and may result in loss of motorcycle control and an accident.

Warning

Always have Triumph approved parts, accessories and conversions fitted by a trained technician of an authorised Triumph dealer. The fitment of parts, accessories and conversions by a technician who is not of an authorised Triumph dealer may affect the handling, stability or other aspects of the motorcycle's operation which may result in loss of motorcycle control and an accident.

Warning

Throughout this operation, ensure that the motorcycle is stabilised and adequately supported to prevent risk of injury from the motorcycle falling.

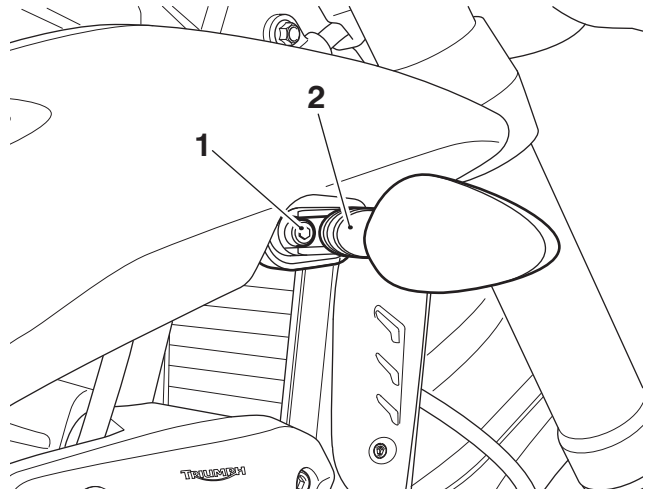
Warning

A torque wrench of known accurate calibration must be used when fitting this accessory kit. Failure to tighten any of the fasteners to the correct torque specification may affect motorcycle performance, handling and stability. This may result in loss of motorcycle control and an accident.

Warning

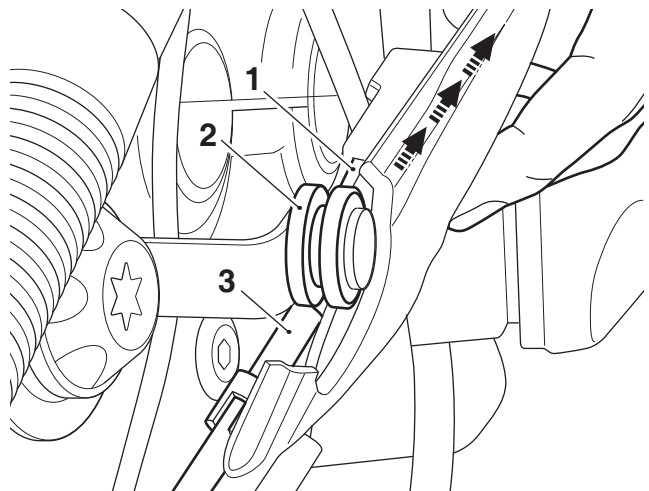
Do not remove the radiator pressure cap when the engine is hot. When the engine is hot, the coolant inside the radiator will be hot and also under pressure. Contact with this hot, pressurised coolant will cause scalds and skin damage.

1. Place the motorcycle on a paddock stand.
2. Remove the rider's seat, as described in the Service Manual.
3. Disconnect the battery, negative (black) lead first, as described in the Service Manual.
4. Release the screw securing the right hand indicator and radiator cowl. Retain the indicator, cowl and screw for reuse.



1. Fixings
2. Indicator (right hand shown)

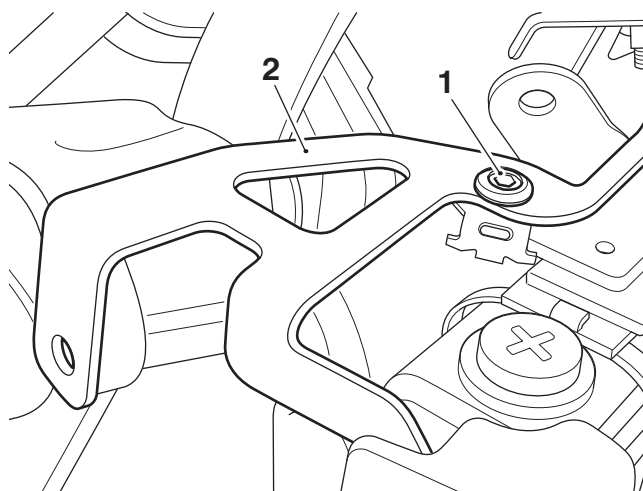
5. Detach the rear of the cowl from the rubber mounting, disconnect the direction indicator harness and remove the cowl in a forward movement.



1. Cowl (right hand illustration sectioned to show bracket)
2. Rubber mounting
3. Electrical connectors (right hand indicator)

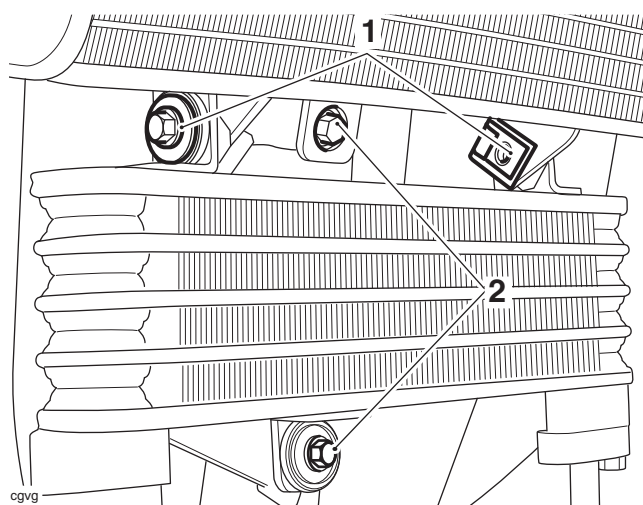
6. Repeat steps 4 and 5 for the left hand side.

- Remove the M6 x 12 mm bolt from the right hand bracket as shown below.



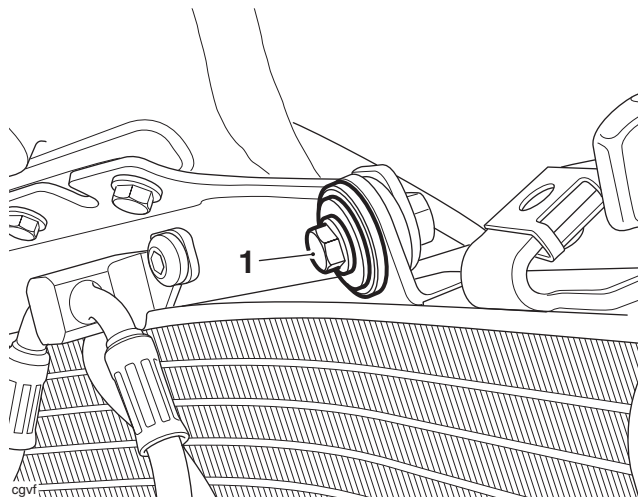
- Bolt, M6 x 12 mm
- Bracket (right hand shown)

- Repeat step 7 for the left hand side.
- Undo and remove the bolts securing the radiator to the oil cooler, retain the bolts for reuse if the motorcycle is to be returned to its original condition.
- Undo and remove the bolts securing the oil cooler and radiator to the lower mounting bracket, retain the bolts for reuse.



- Bolts (radiator to oil cooler)
- Bolts (mounting bracket)

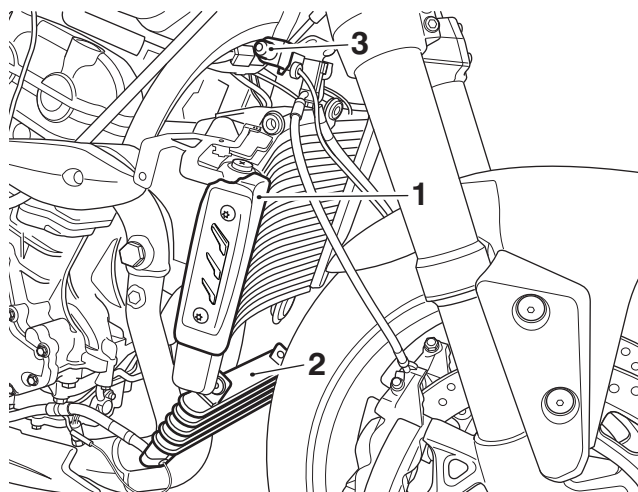
- Release the bolt securing the radiator to the upper mount bracket.



- Bolt

Note:

- It is necessary to lower the radiator and oil cooler to allow clearance of the front brake hoses during installation.
 - Do not allow the radiator and oil cooler to hang unsupported during installation of the radiator guard.
 - It is not necessary to drain the coolant.
 - Protect any painted parts to avoid damage by sharp objects.
- With the aid of an assistant, slide the radiator from its mounting and position as shown below.



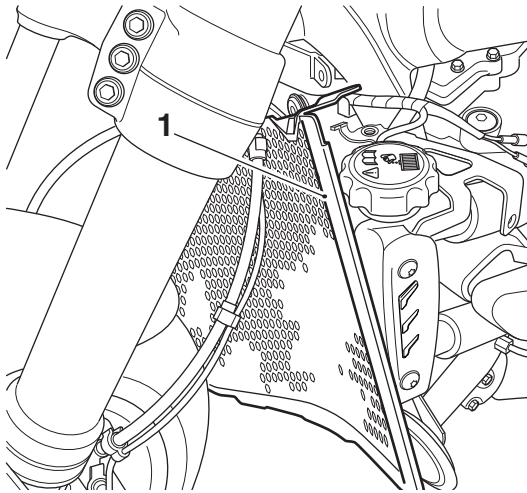
- Radiator
- Oil cooler
- Mounting



Caution

When positioning the radiator guard to the radiator, do not allow the radiator guard to come into contact with the radiator fins. Damage to the radiator fins could interfere with the radiator airflow leading to overheating and consequent engine damage.

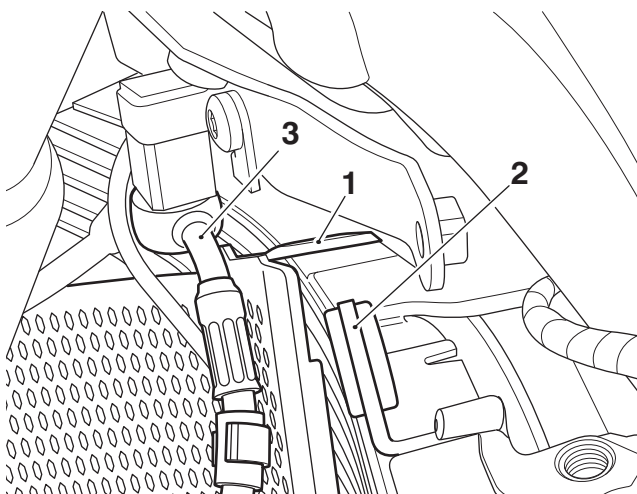
13. Position the radiator guard from the left hand side in the orientation shown below.



1. Radiator guard

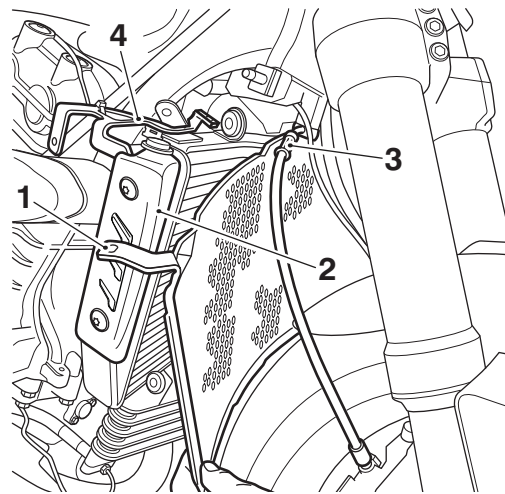
Note:

- When the left hand upper bracket is correctly positioned the right hand upper bracket will be clear of the right hand end tank and radiator finisher.
14. Gently manoeuvre the radiator guard to the right until the left hand upper radiator guard bracket is positioned as shown below.



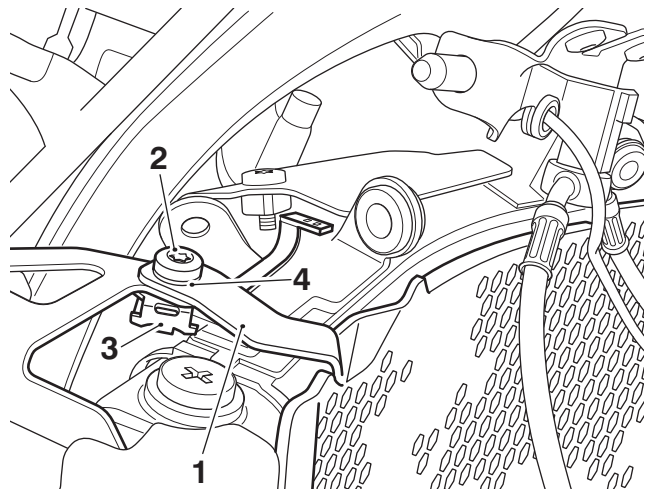
1. Radiator guard upper bracket
2. Radiator
3. Front brake hose

15. Raise the right hand radiator guard bracket until it aligns with its upper fixing location on the upper edge of the radiator.



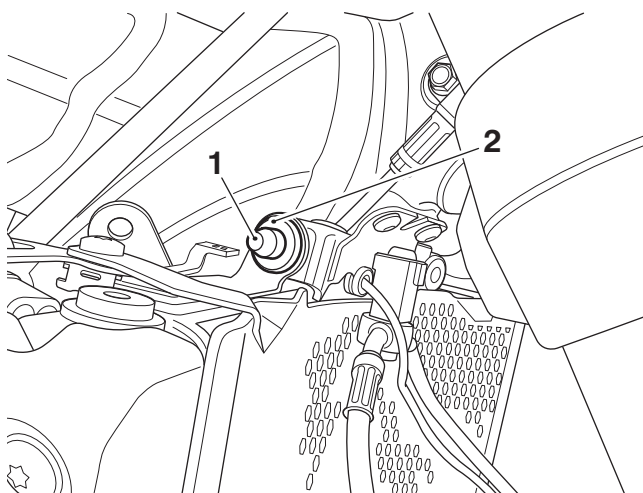
1. Radiator guard upper bracket (right hand)
2. Radiator end tank
3. Front brake hose
4. Upper fixing location

16. Fit the M6 x 16 mm screws and M6 washers to the right and left hand radiator guard upper mounting brackets, do not fully tighten at this stage.



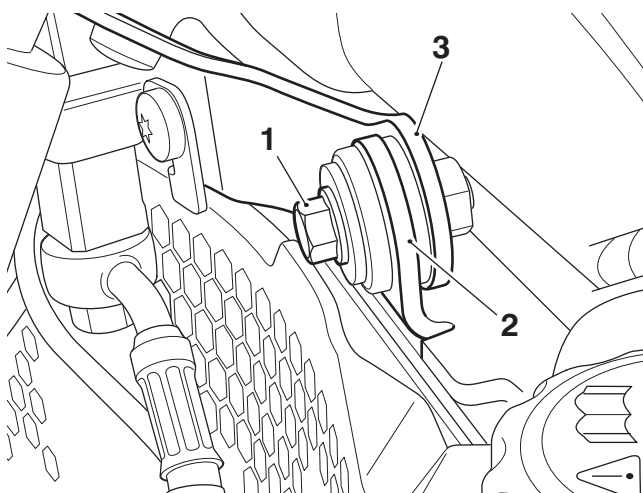
1. Radiator guard upper bracket (right hand shown)
2. Screw, M6 x 16 mm
3. Mounting bracket
4. Washer, M6

17. Locate the radiator right hand upper mounting to the rubber grommet.



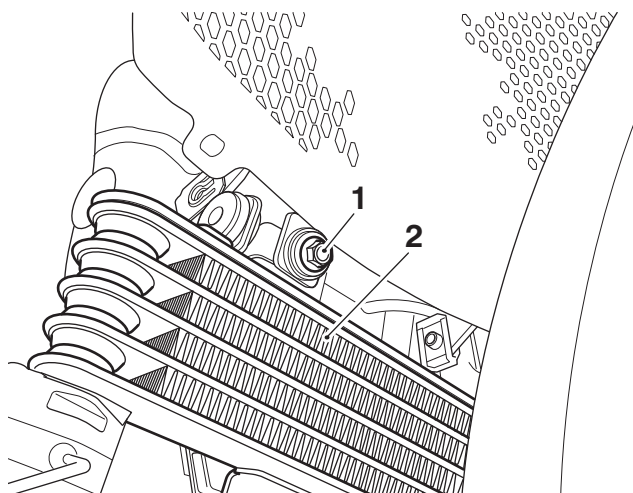
1. Mounting
2. Rubber grommet

18. Locate the upper radiator bracket to its mounting and refit the bolt removed in step 11, do not fully tighten at this stage.



1. Bolt
2. Radiator bracket
3. Mounting bracket

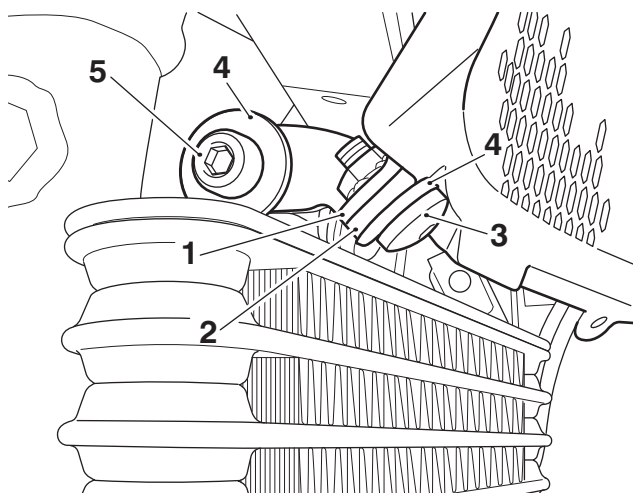
19. Position the oil cooler to the radiator. Refit the upper oil cooler bolt removed in step 10 and tighten to **9 Nm**.



1. Bolt (upper)
2. Oil cooler

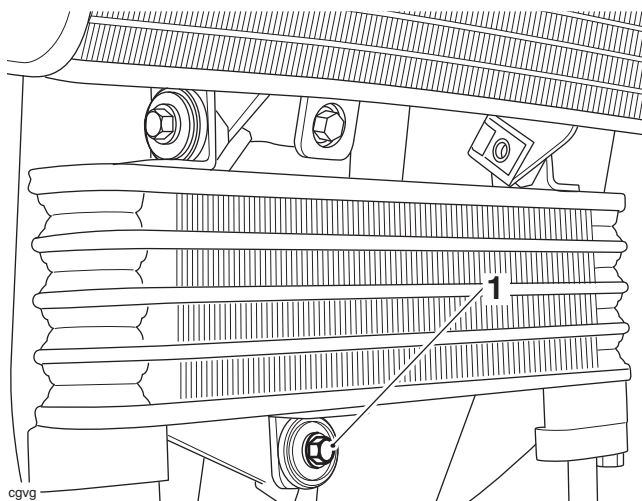
20. Position the right hand lower bracket to the radiator guard:

- Secure the right hand lower bracket to the oil cooler upper mounting using an M6 washer and an M6 x 30 mm screw, do not fully tighten at this stage.
- Secure the right hand lower bracket to the radiator guard using an M6 washer and an M6 x 12 mm screw, do not fully tighten at this stage.



1. Lower bracket (right hand shown)
2. Radiator guard
3. Screw, M6 x 12 mm
4. Washers, M6
5. Screw, M6 x 30 mm

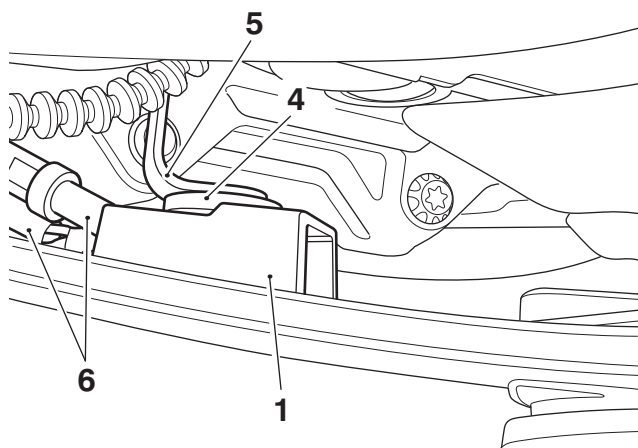
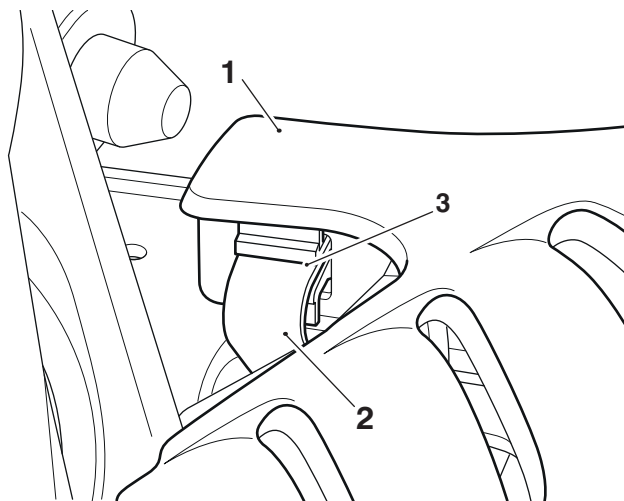
21. Repeat step 20 for the left hand side.
22. Tighten the upper radiator mounting bolt to **9 Nm**.
23. Tighten the lower oil cooler mounting bracket to frame bolt to **9 Nm**.



1. Bolt (lower)

24. Ensure the radiator guard is centrally located and level to the radiator, ensure the rubber strip is positioned against the lower edge of the radiator and then tighten the:
 - M6 x 16 mm upper radiator guard screws to **7 Nm**.
 - M6 x 30 mm screws to **9 Nm**.
 - M6 x 12 mm lower radiator guard screws to **7 Nm**.
25. Connect the right hand direction indicator harness as noted during removal.

26. Position the right hand cowl ensuring the bayonet clip on the radiator bracket aligns with the slot at the front and the grommet is located into the slot at the rear.



1. Cowl
2. Bracket (front)
3. Bayonet clip (front)
4. Grommet
5. Mounting bracket
6. Electrical connectors (indicator)

27. Refit the right hand indicator to the bracket and secure using the screw removed in step 4. Tighten the screw to **3 Nm**.
28. Repeat steps 25 to 27 for the left hand side.
29. Reconnect the battery, positive (red) lead first, refer to the Service Manual.
30. Refit the rider's seat, refer to the Service Manual.
31. Remove the motorcycle from the paddock stand and place on the side stand.
32. Check for correct operation of the indicators, rectify as necessary.

 **Caution**

Using high-pressure water sprays can damage the radiator fins and impair the radiator's efficiency.

Do not obstruct or deflect airflow through the radiator by installing unauthorised accessories in front of the radiator or behind the cooling fan. Interference with the radiator airflow can lead to overheating and consequent engine damage.

 **Warning**

If, after fitment of this accessory kit, you have any doubt about the performance of any aspect of the motorcycle, contact an authorised Triumph dealer and do not ride the motorcycle until the authorised dealer has declared it fit for use. Riding a motorcycle when there is any doubt as to any aspect of the performance of the motorcycle may result in loss of control of the motorcycle leading to an accident.

 **Warning**

Never ride an accessory-equipped motorcycle at speeds above 80 mph (130 km/h).

The presence of accessories will cause changes in the stability and handling of the motorcycle. Failure to allow for changes in motorcycle stability may lead to loss of control or an accident.

Remember that the 80 mph (130 km/h) limit will be reduced by the fitting of non-approved accessories, incorrect loading, worn tyres, overall motorcycle condition and poor road or weather conditions

 **Warning**

The motorcycle must not be operated above the legal road speed limit except in closed-course conditions.

 **Warning**

Only operate this Triumph motorcycle at high speed in closed-course, on-road competition or on closed-course racetracks. High-speed operation should only be attempted by riders who have been instructed in the techniques necessary for high-speed riding and are familiar with the motorcycle's characteristics in all conditions.

High-speed operation in any other circumstances is dangerous and will lead to loss of motorcycle control and an accident.