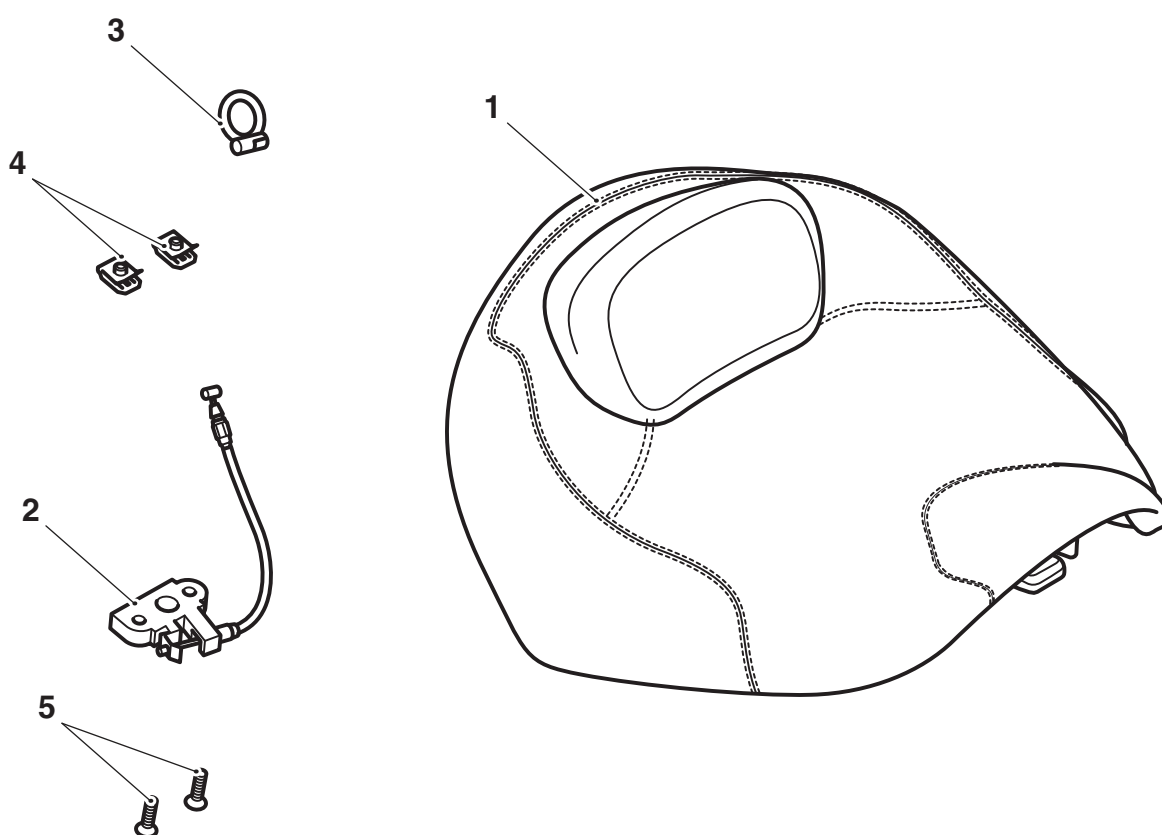


### Fitting Instructions: Thunderbird Commander and Thunderbird LT A9708357

Thank you for choosing this Triumph genuine accessory kit. This accessory kit is the product of Triumph's use of proven engineering, exhaustive testing, and continuous striving for superior reliability, safety and performance.

Completely read all of these instructions before commencing the installation of the accessory kit in order to become thoroughly familiar with the kit's features and the installation process.

These instructions should be considered a permanent part of your accessory kit, and should remain with it even if your accessory equipped motorcycle is subsequently sold.



#### Parts Supplied:

1. Comfort rider seat	1 off	4. Captive nut	2 off
2. Seat latch	1 off	5. Screw, M6 x 25 mm	2 off
3. Pull ring	1 off		

## **Warning**

This accessory kit is designed for use on Triumph Thunderbird Commander and Triumph Thunderbird LT motorcycles only and should not be fitted to any other Triumph model or to any other manufacturer's motorcycle. Fitting this accessory kit to any other Triumph model or to any other manufacturer's motorcycle, may interfere with the rider and could affect the stability and handling of the motorcycle, leading to loss of control and an accident.

## **Warning**

Always have Triumph approved parts, accessories and conversions fitted by a trained technician of an authorised Triumph dealer. The fitment of parts, accessories and conversions by a technician who is not of an authorised Triumph dealer may affect the handling, stability or other aspects of the motorcycle's operation which may result in loss of motorcycle control and an accident.

## **Warning**

Throughout this operation, ensure that the motorcycle is stabilised and adequately supported to prevent risk of injury from the motorcycle falling.

## **Warning**

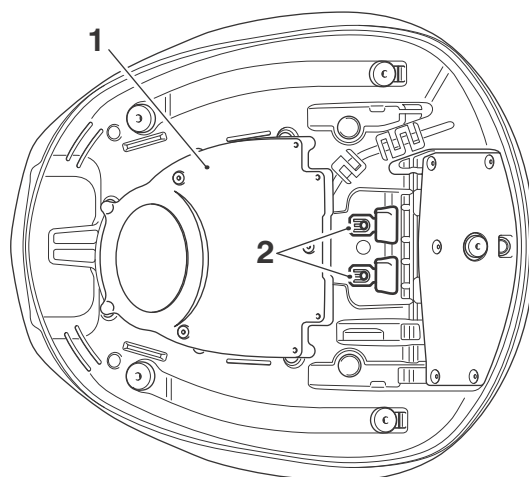
Failure to tighten any of the fasteners to the correct torque specification may result in loss of motorcycle control and an accident. Always use a calibrated torque wrench.

## **Caution**

To prevent damage to the seats or seat covers, care must be taken not to drop the seats. Do not lean the seats against the motorcycle or any surface which may damage the seats or seat covers. Instead, place the seats with the seat cover facing upwards, on a clean, flat surface which is covered with a soft cloth.

Do not place any item on the seats which may cause damage or staining to the seat covers.

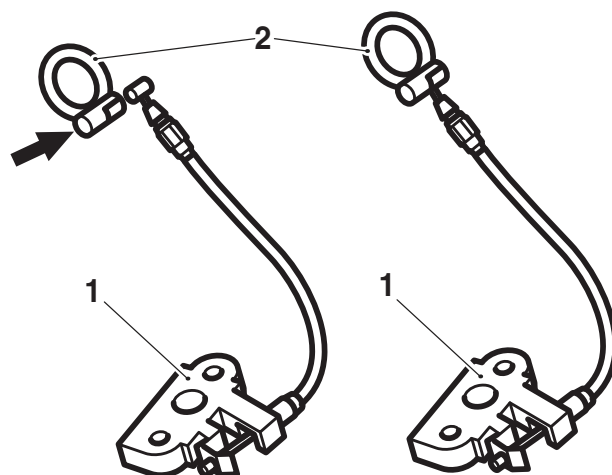
1. Remove the rider's seat, refer to the Owner's Handbook. Retain for re-use if the motorcycle is to be returned to its original condition.
2. Collect the comfort seat and two captive nuts from the parts kit.
3. Position the captive nuts to the edge of the comfort seat base using firm pressure until the threaded part is aligned to the pre-drilled holes in the comfort seat base.



**1. Comfort seat**

**2. Captive nuts**

4. Collect the seat latch and the pull ring from the parts kit.
5. Locate the pull ring to the seat latch cable and then using a twisting motion rotate the pull ring anti-clockwise until it is locked into position, as shown below:

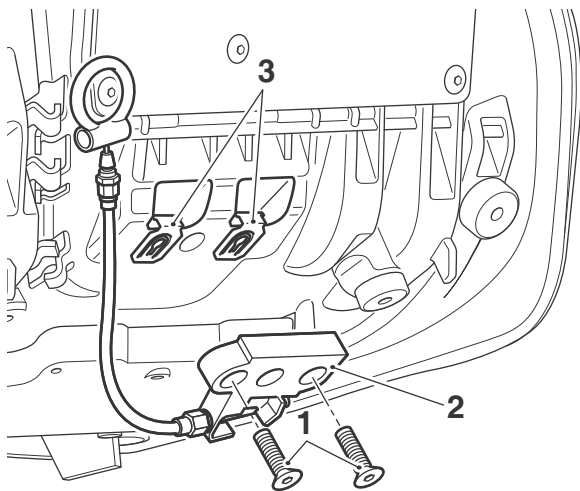


**1. Seat latch**

**2. Pull ring**

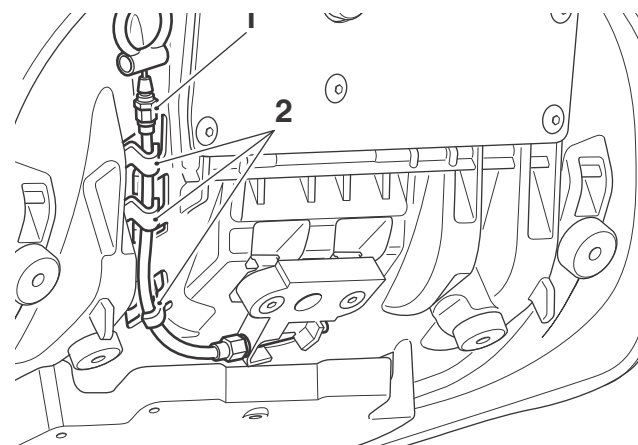
6. Collect the two screws from the parts kit.

7. Fit the seat latch to the base of the comfort seat and secure using captive nuts and M6 x 25 mm screws. Tighten the screws to **5 Nm**.



- 1. Screws, M6 x 25 mm**  
**2. Seat latch**  
**3. Captive nuts**

8. Position the outer cable to the seat base and secure using the locating features, as shown below:



- 1. Seat latch outer cable**  
**2. Locating features**

9. Fit the comfort seat to the motorcycle, refer to the Owner's Handbook.



### Warning

After fitting the accessory kit, the motorcycle will exhibit new handling characteristics. Operate the motorcycle in a safe area free from traffic to gain familiarity with any new characteristics. Operation of the motorcycle when not familiar with any new handling characteristics may result in loss of motorcycle control and an accident.



### Warning

If, after fitment of this accessory kit, you have any doubt about the performance of any aspect of the motorcycle, contact an authorised Triumph dealer and do not ride the motorcycle until the authorised dealer has declared it fit for use. Riding a motorcycle when there is any doubt as to any aspect of the performance of the motorcycle may result in loss of control of the motorcycle leading to an accident.



### Warning

Never ride an accessory equipped motorcycle at speeds above 80 mph (130 km/h).

The presence of accessories will cause changes in the stability and handling of the motorcycle. Failure to allow for changes in motorcycle stability may lead to loss of control or an accident.

Remember that the 80 mph (130 km/h) limit will be reduced by the fitting of non-approved accessories, incorrect loading, worn tyres, overall motorcycle condition and poor road or weather conditions.



### Warning

Only operate this Triumph motorcycle at high speed in closed course, on-road competition or on closed course racetracks. High speed operation should only be attempted by riders who have been instructed in the techniques necessary for high speed riding and are familiar with the motorcycle's characteristics in all conditions.

High speed operation in any other circumstances is dangerous and will lead to loss of motorcycle control and an accident.



### **Warning**

The motorcycle must not be operated above the legal road speed limit except in closed course conditions.



### **Warning**

To prevent detachment of the seat during riding, after fitting always grasp the seat and pull firmly upwards. If the seat is not correctly secured it may detach from the motorcycle. A loose or detached seat could cause loss of motorcycle control and an accident.

## **Cleaning and Maintenance**



### **Caution**

The use of high-pressure spray washers is not recommended. When using pressure washers, water may be forced into bearings and other components causing premature wear from corrosion and loss of lubrication.

Regularly clean the comfort seat with cold water and a mild automotive cleaner.

Avoid spraying water with any great force directly on to the comfort seat and mountings.