



## Accessory Fitting Instructions

Windshield, Touring Kit	
Kit Number	Models Affected
A9708304	Bonneville T100 from VIN 759204 up to VIN AD4189 with Euro 4 engine ECM (see below), Bonneville T120 up to VIN AE2212 with Euro 4 engine ECM (see below), Bonneville T120 Black up to VIN AE3661 with Euro 4 engine ECM (see below)
A9701646	Bonneville T100 from VIN 759204 with Euro 4 or Euro 5 engine ECM (see below), Bonneville T120 Euro 4 or Euro 5 engine ECM (see below), Bonneville T120 Black Euro 4 or Euro 5 engine ECM (see below)

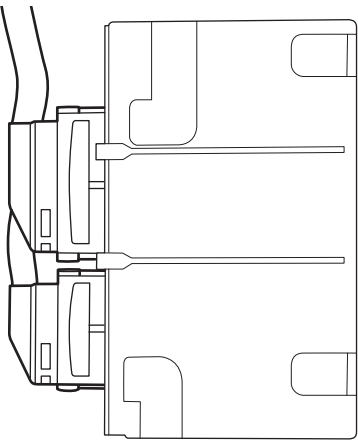
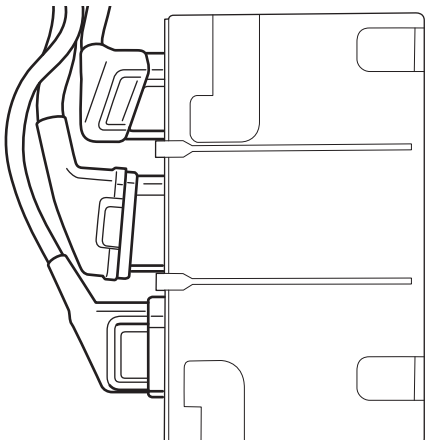
Thank you for choosing this Triumph genuine accessory kit. This accessory kit is the product of Triumph's use of proven engineering, exhaustive testing, and continuous striving for superior reliability, safety and performance.

Completely read all of these instructions before commencing the installation of the accessory kit in order to become thoroughly familiar with the kit's features and the installation process.

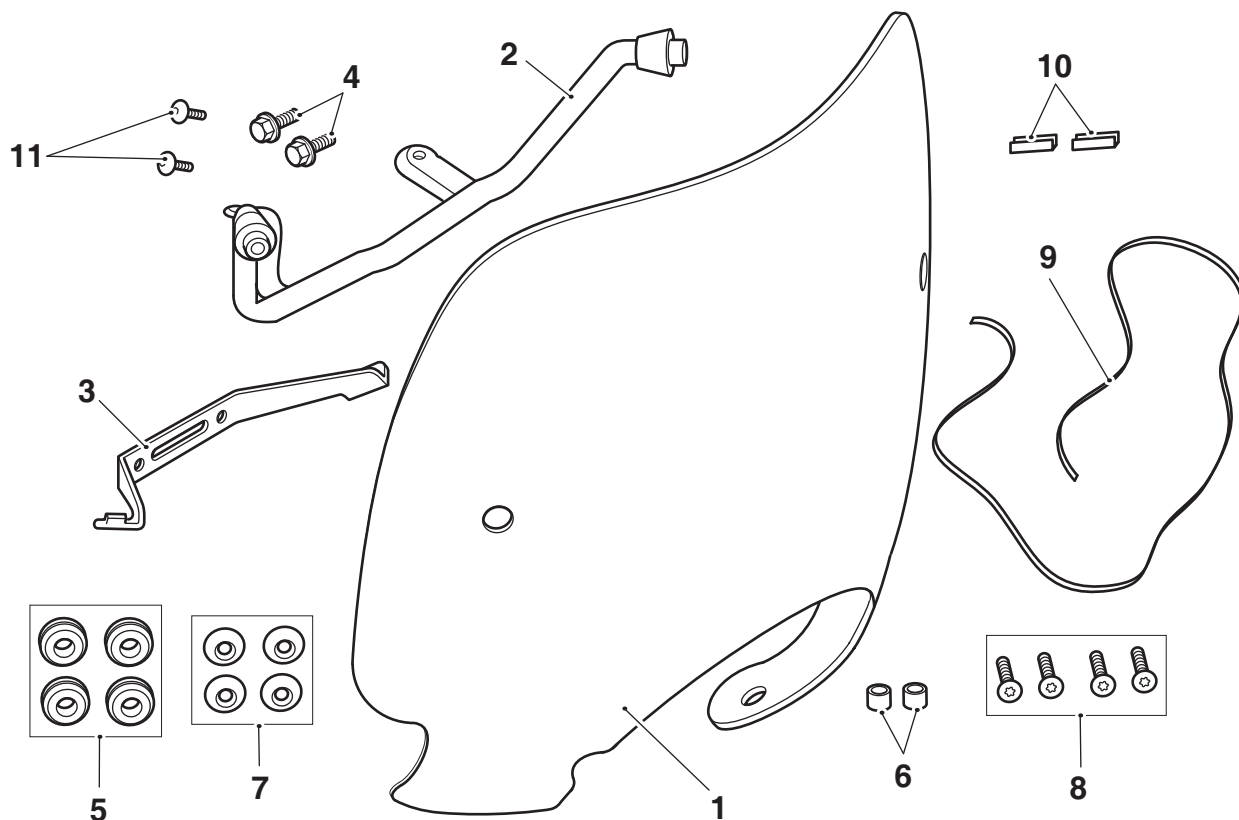
These instructions should be considered a permanent part of your accessory kit, and should remain with it even if your accessory-equipped motorcycle is subsequently sold.

**Note:**

- The engine ECM is located under the seat.

Engine ECM Identification	
Euro 4 ECM	Euro 5 ECM
	
Two connectors	Three connectors

Parts supplied, A9708304, A9701646



1.	Windshield	1 off	7.	Finisher	4 off
2.	Mounting bracket, upper	1 off	8.	Fixing, M6 x 25 mm	4 off
3.	Mounting bracket, lower	1 off	9.	Trim, windshield	1 off
4.	Fixing, M8 x 16 mm	2 off	10.	Retaining clip	1 off
5.	Rubber grommet	4 off	11.	Fixing, M6 x 12 mm	2 off
6.	Sleeve	2 off			

**Warning**

Fit only genuine Triumph accessories to those models approved by Triumph as listed in the associated Triumph fitting instructions. The accessory kits covered in this instruction are designed for use on specific models of Triumph motorcycle. The accessory kits and the models applicable are listed at the start of the instruction. They should never be fitted to any other Triumph model or to any other manufacturer's motorcycle. Fitting an accessory kit to a Triumph model not listed, or to any other manufacturer's motorcycle will affect the performance, stability and handling of the motorcycle. This may affect the rider's ability to control the motorcycle and could result in an accident causing severe injuries or death.

**Warning**

Always have Triumph approved parts, accessories and conversions fitted by a trained technician of an authorised Triumph dealer. The fitment of parts, accessories and conversions by a technician who is not of an authorised Triumph dealer may affect the handling, stability or other aspects of the motorcycle's operation which may result in loss of motorcycle control and an accident.

**Warning**

Make sure the motorcycle is supported. A correctly supported motorcycle will help prevent it from falling. An unstable motorcycle may fall, causing injury to the operator or damage to the motorcycle.

**Warning**

A torque wrench of known accurate calibration must be used when fitting this accessory kit. Failure to tighten any of the fasteners to the correct torque specification may affect motorcycle performance, handling and stability. This may result in loss of motorcycle control and an accident.

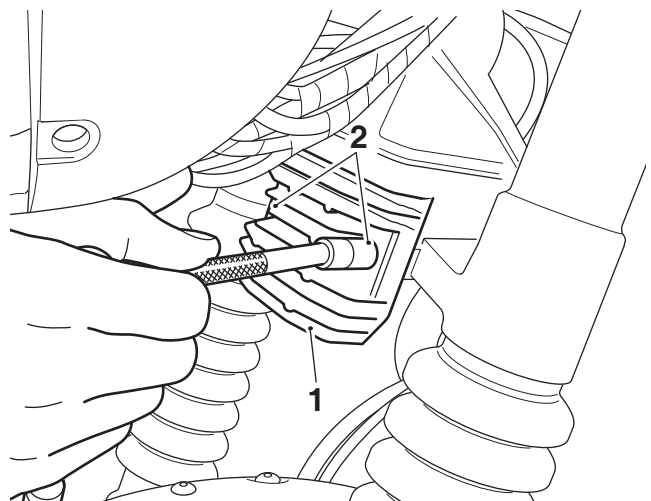
**Note:**

- Triumph offers a broad range of approved genuine accessories for your motorcycle. We cannot therefore cover all possible equipment variations in these instructions. For removal and installation of Triumph Genuine Accessories, always refer to the instructions supplied with the respective accessory kit. To obtain additional copies of any Triumph accessory instructions, visit [www.triumphinstructions.com](http://www.triumphinstructions.com) or contact your authorised Triumph dealer.

- Remove the seat, as described in the Service Manual.
- Disconnect the battery, negative (black) lead first.
- Remove the headlight fixings, as described in the Service Manual. Retain the fixings for reuse.

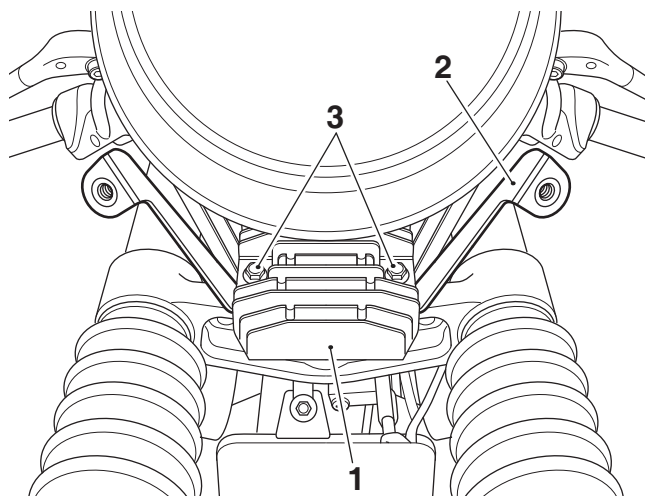
**Bonneville T100 from VIN 759204 up to VIN AD4189 with Euro 4 engine ECM, Bonneville T120 up to VIN AE2212 with Euro 4 engine ECM, Bonneville T120 Black up to VIN AE3661 with Euro 4 engine ECM Models Only**

- Carefully move the headlight assembly up to gain access to the regulator/rectifier fixings. Support the headlight and remove the regulator/rectifier fixings, retain the fixings for reuse. Do not remove the regulator/rectifier.



- Regulator/rectifier
- Fixings

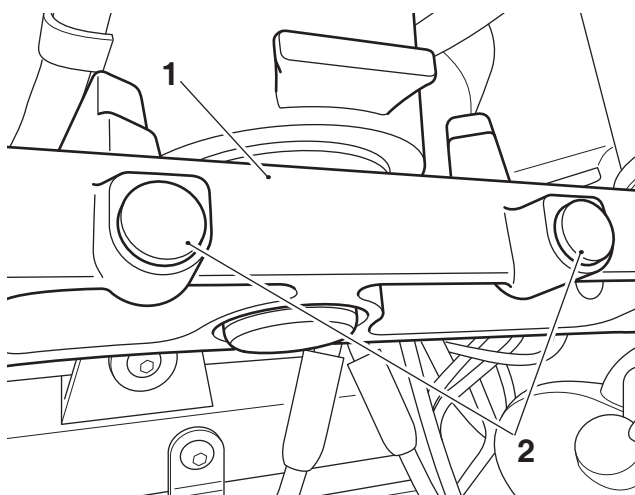
- Collect the lower mounting bracket from the kit and fit behind the regulator/rectifier, in the orientation shown. Align the fixing holes of the lower mounting bracket with the regulator/rectifier fixing positions and refit the original fixings. Tighten the fixings to **4 Nm**.



- Regulator/rectifier
- Mounting bracket, lower
- Fixings

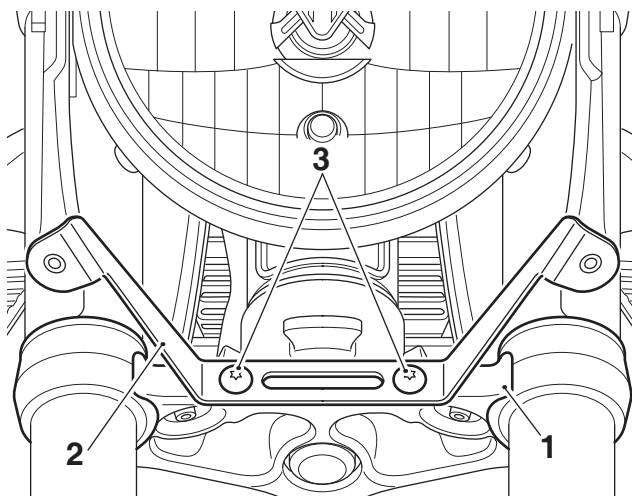
**Bonneville T100 from VIN AC5927 with Euro 5 engine ECM, Bonneville T120 from VIN AC6130 with Euro 5 engine ECM, Bonneville T120 Black from VIN AD0139 with Euro 5 engine ECM Models Only**

- Remove the two blanking plugs from the lower yoke. Retain the plugs for reuse if the motorcycle is to be returned to its original condition.



- Lower yoke
- Blanking plugs

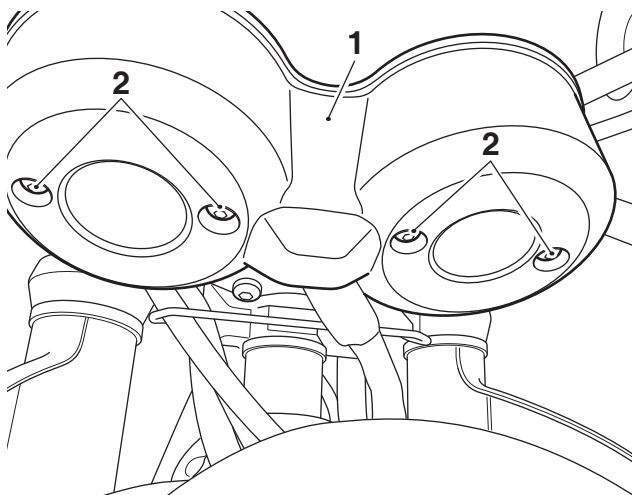
- Collect the lower mounting bracket from the kit and position it on the lower yoke, in the orientation shown. Fit the M6 x 12 mm fixings from the kit to secure the lower mounting bracket to the lower yoke. Tighten the fixings to **10 Nm**.



- Lower yoke
- Lower mounting bracket
- Fixings, M6 x 12 mm

#### All Models

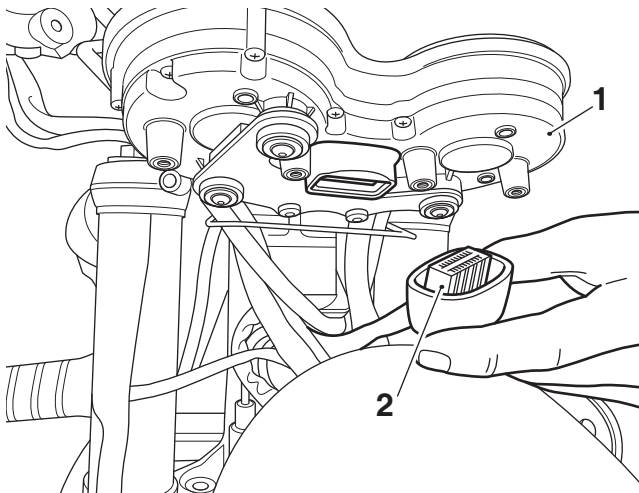
- Carefully lower the headlight assembly to allow access to the underside of the instrument cluster.
- Remove the four fixings from the rear of the instrument cluster. Retain the fixings for reuse.



- Instrument cluster
- Fixing

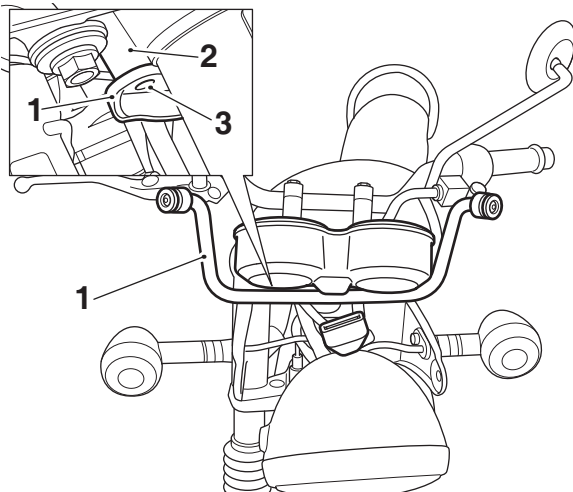
- Remove the rear cover from the instrument cluster.

11. Disconnect the wiring harness connector from the instrument cluster.



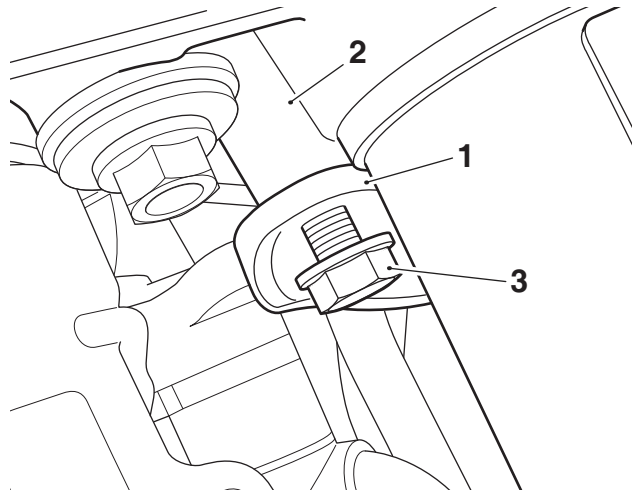
1. Instrument cluster
2. Wiring harness connector

12. Locate the upper mounting bracket in position, aligning the mounting points with the fixing positions on the underside of the top yoke.



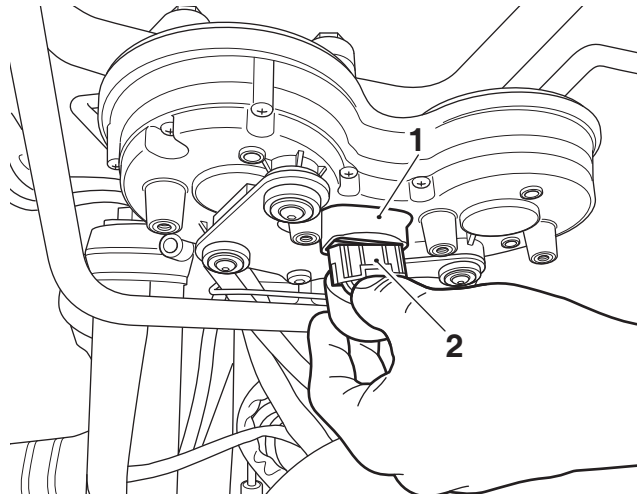
1. Upper mounting bracket
2. Top yoke
3. Fixing position, right hand side shown

13. Fit the M8 x 16 mm fixings from the kit to secure the upper mounting bracket to the top yoke. Tighten the fixings to **23 Nm**.



1. Upper mounting bracket, right hand side shown
2. Top yoke
3. Fixing, M8 x 16 mm

14. Reconnect the instrument cluster wiring harness.

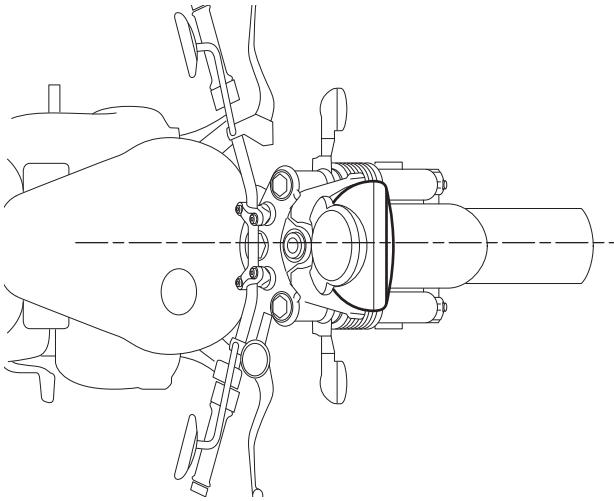


1. Instrument cluster connection
2. Wiring harness connector

15. Refit the instrument cluster rear cover and secure with the original fixings. Tighten the fixings to **3 Nm**.
16. Refit the headlight assembly with the original fixings, as described in the Service Manual. Do not fully tighten the fixings at this stage.
17. Reconnect the battery, positive (red) lead first and tighten the battery terminals to **4.5 Nm**.

**Note:**

- **When tightening the headlight fixings make sure the headlight is kept centrally located on the motorcycle, as shown below.**

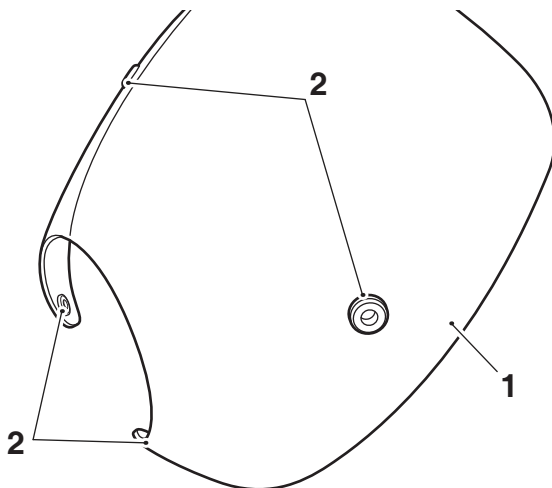


18. Align the headlight and tighten the fixings, as described in the Service Manual.
19. Refit the seat, as described in the Service Manual.

**Caution**

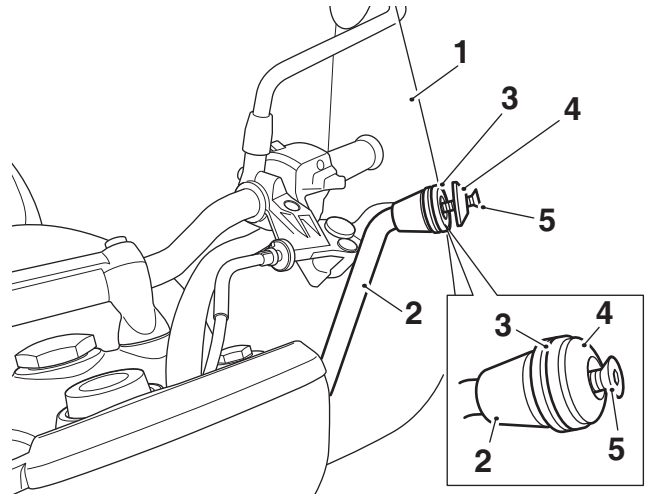
Care must be taken when fitting the new touring windshield. Damage to the windshield surfaces could result from inadequate care during the assembly process.

20. Collect the four rubber grommets from the kit and fit into the windshield, as shown.



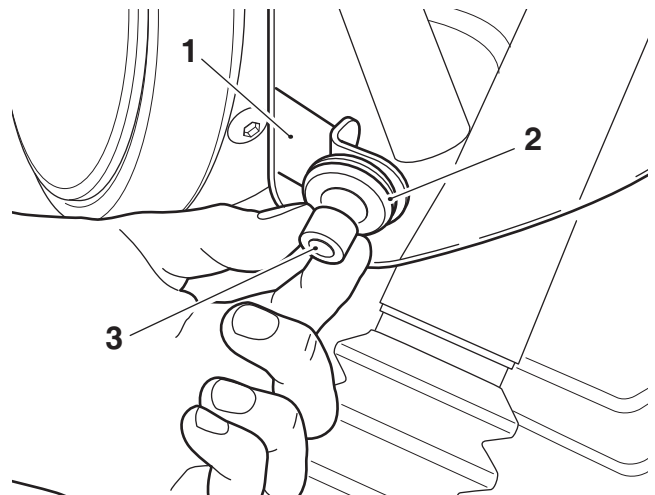
1. Windshield
2. Grommet

21. Carefully fit the two grommets at the top of the windshield onto the left and right hand sides of the upper mounting bracket. Fit finishers and M6 x 25 mm fixings from the kit to secure the windshield to the upper mounting bracket, as shown. Do not fully tighten the fixings at this stage.



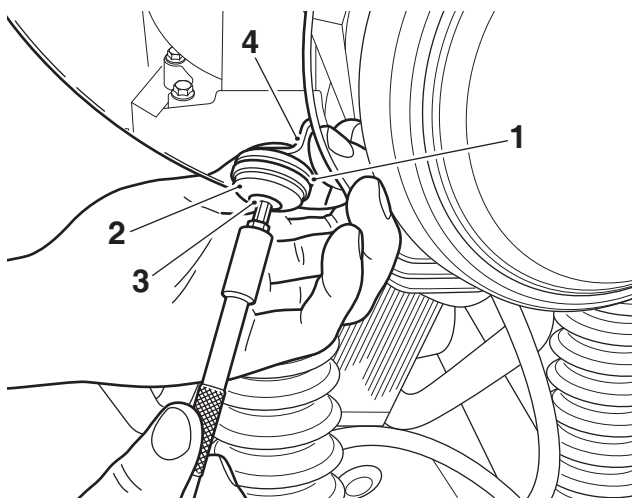
1. Windshield
2. Upper mounting bracket, left hand shown
3. Grommet
4. Finisher
5. Fixing, M6 x 25 mm

22. Collect the two sleeves from the kit and fit into the two grommets at the bottom of the windshield.



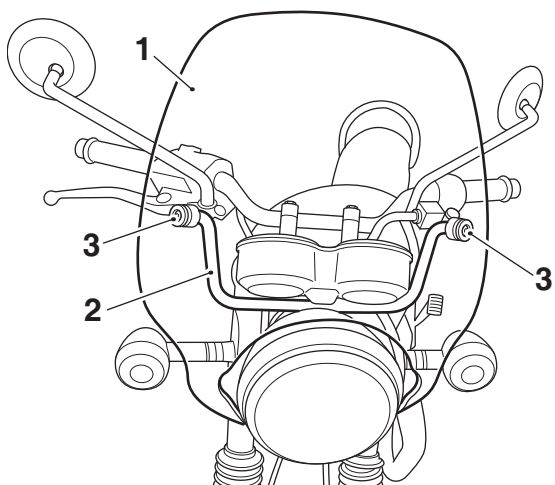
1. Windshield
2. Grommet, left hand shown
3. Sleeve

23. Fit a finisher and M6 x 25 mm fixing from the kit at the left hand and right hand lower screen mounting positions, to secure the windshield to the lower mounting bracket. Support the bracket as shown and tighten the fixings to **8.5 Nm**.



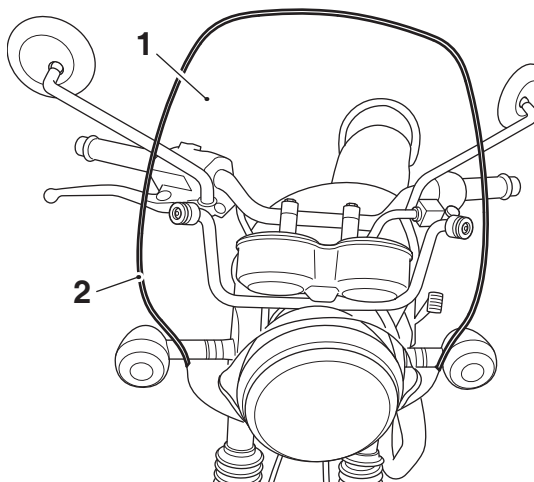
1. Grommet
2. Finisher
3. Fixing, M6 x 25 mm
4. Mounting bracket, lower

24. Tighten the top M6 x 25 mm windshield fixings to **8.5 Nm**.



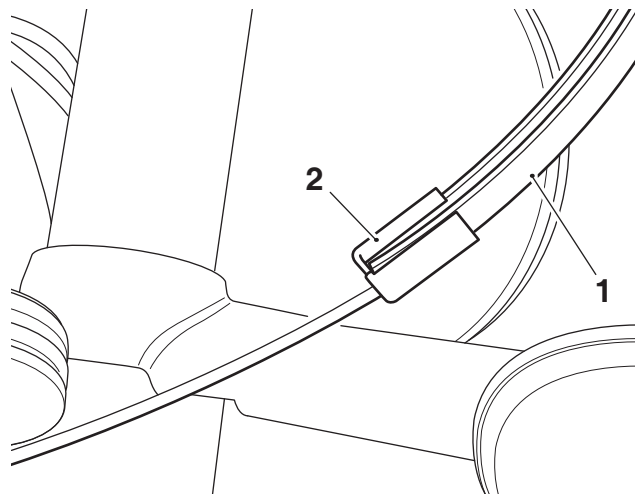
- 7746
1. Windshield
  2. Mounting bracket, top
  3. M6 x 25 mm fixing

25. Collect the windshield trim from the kit and fit to the edge of the windshield. Make sure when the trim is fitted there is an equal distance from the end of the trim and the windshield at both sides.



- 7745
1. Windshield
  2. Windshield trim

26. Collect the retaining clips from the kit and fit to the ends of the windshield trim, as shown.



1. Windshield trim
2. Retaining clip

 **Warning**

After fitting the touring windshield the motorcycle will exhibit new handling characteristics. Operate the motorcycle in a safe area free from traffic to gain familiarity with any new characteristics. Operation of the motorcycle when not familiar with any new handling characteristics may result in loss of motorcycle control and an accident.

 **Warning**

Never attempt to clean the windshield while riding the motorcycle. Removal of the rider's hands from the handlebars while riding the motorcycle will diminish the ability of the rider to maintain control of the motorcycle. Attempting to clean the windshield while riding the motorcycle may result in loss of motorcycle control and an accident.

 **Warning**

The windshield is not a substitute for a safety helmet or eye protection. Windshields are designed to provide wind protection and increased riding comfort. They are not designed to provide protection in the event of a collision with another vehicle, the road, birds or any other object. When riding a motorcycle both rider and passenger must always wear a safety helmet, eye protection, gloves and trousers (close fitting around the knees and ankle). Although full protection is not possible, wearing correct protective clothing can reduce the risk of injury when riding.

 **Warning**

If, after fitting this accessory kit, you have any doubt about the performance of any aspect of the motorcycle, contact an authorised Triumph dealer and do not ride the motorcycle until the authorised dealer has declared it fit for use. Riding a motorcycle when there is any doubt as to any aspect of the performance of the motorcycle may result in loss of motorcycle control and an accident.

 **Warning**

Never ride an accessory-equipped motorcycle at speeds above 80 mph (130 km/h).

The presence of accessories will cause changes in the stability and handling of the motorcycle. Failure to allow for changes in motorcycle stability may result in loss of motorcycle control and an accident.

Remember that the 80 mph (130 km/h) limit will be reduced by the fitting of non-approved accessories, incorrect loading, worn tyres, overall motorcycle condition and poor road or weather conditions.

 **Warning**

The motorcycle must not be operated above the legal road speed limit except in closed-course conditions.

 **Warning**

Only operate this Triumph motorcycle at high speed in closed-course, on-road competition or on closed-course racetracks. High-speed operation should only be attempted by riders who have been instructed in the techniques necessary for high speed riding and are familiar with the motorcycle's characteristics in all conditions.

High-speed operation in any other circumstances is dangerous and may result in loss of motorcycle control and an accident.