



Accessory Fitting Instructions

Aluminium Radiator Guard Kit

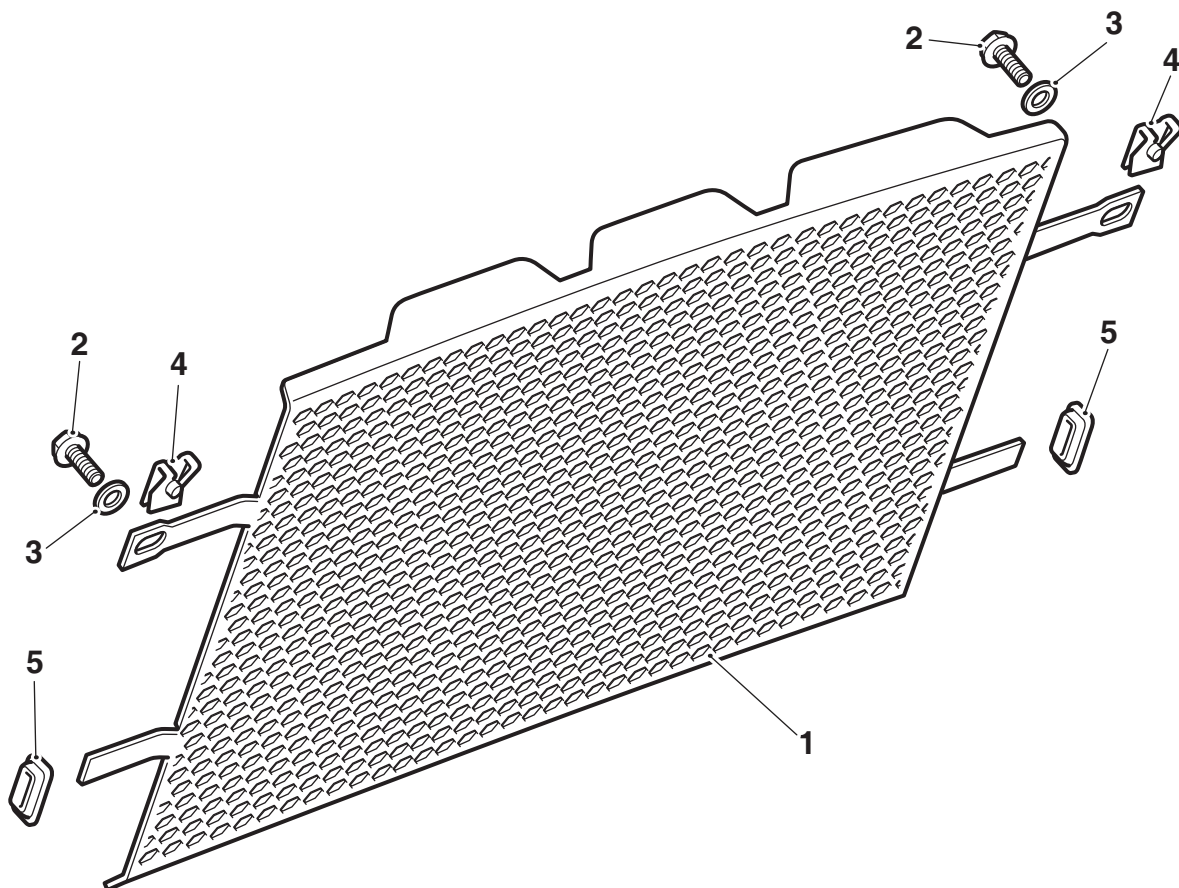
Kit number	Models Affected
A9708279	Tiger XR, Tiger XR _x , Tiger XC, Tiger XC _x , Tiger 800 XR, Tiger 800 XR _x , Tiger 800 XR _x LRH, Tiger 800 XC _x

Thank you for choosing this Triumph genuine accessory kit. This accessory kit is the product of Triumph's use of proven engineering, exhaustive testing, and continuous striving for superior reliability, safety and performance.

Completely read all of these instructions before commencing the installation of the accessory kit in order to become thoroughly familiar with the kit's features and the installation process.

These instructions should be considered a permanent part of your accessory kit, and should remain with it even if your accessory equipped motorcycle is subsequently sold.

Parts supplied



1. Radiator guard	1 off	4. Captive nut, M5	2 off
2. Bolt, M5 x 15 mm	2 off	5. Rubber grommet	2 off
3. Washer, M5	2 off		



Warning

The accessory kits covered in this instruction are designed for use on specific models of Triumph motorcycle. The accessory kits and the models applicable are listed at the start of the instruction. They should not be fitted to any other Triumph model or to any other manufacturer's motorcycle. Fitting an accessory kit to a Triumph model not listed, or to any other manufacturer's motorcycle will affect the performance, stability and handling of the motorcycle. This may affect the rider's ability to control the motorcycle and could cause an accident.



Warning

Always have Triumph approved parts, accessories and conversions fitted by a trained technician of an authorised Triumph dealer. The fitment of parts, accessories and conversions by a technician who is not of an authorised Triumph dealer may affect the handling, stability or other aspects of the motorcycle's operation which may result in loss of motorcycle control and an accident.



Warning

Throughout this operation, ensure that the motorcycle is stabilised and adequately supported to prevent risk of injury from the motorcycle falling.



Warning

A torque wrench of known accurate calibration must be used when fitting this accessory kit. Failure to tighten any of the fasteners to the correct torque specification may affect motorcycle performance, handling and stability. This may result in loss of motorcycle control and an accident.

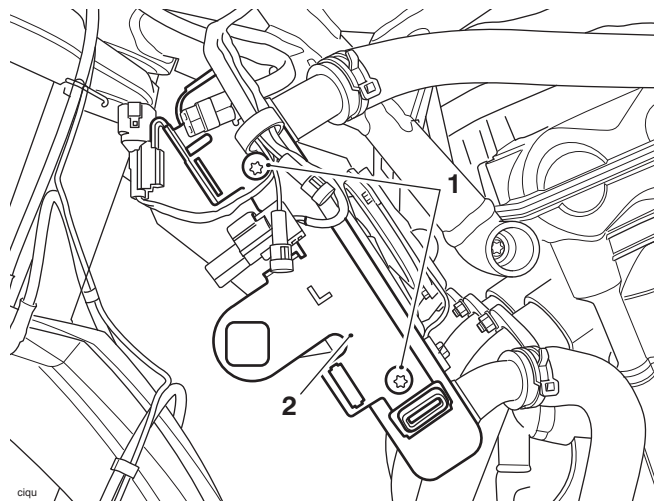
Removal

1. Remove the rider's seat, as described in the Service Manual.
2. Disconnect the battery, negative (black) lead first, as described in the Service Manual.
3. Remove the radiator upper panels, as described in the Service Manual.

Left Hand Radiator Bracket

Note:

- **It is not necessary to disconnect the electrical connectors from the radiator brackets.**
4. Detach the left hand radiator bracket, and position aside. Discard the fixings.



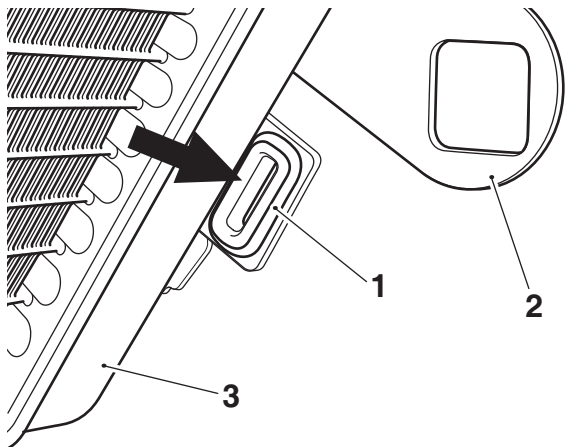
1. Fixings

2. Left hand bracket

5. **Tiger XC only:** Collect the radiator guard and retain for reuse if the motorcycle is to be returned to its original condition.

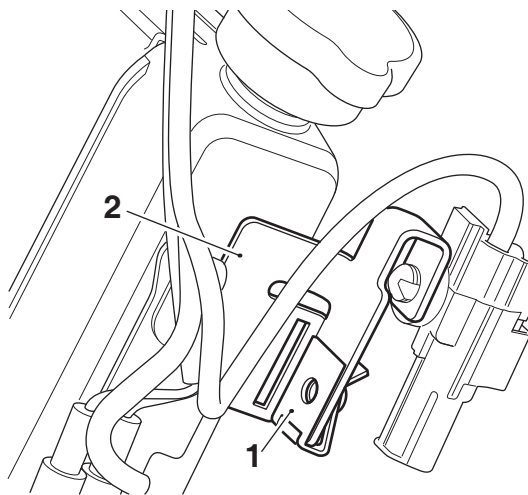
Installation

1. Fit the rubber grommets supplied to the left and right hand radiator brackets in the orientation shown below.



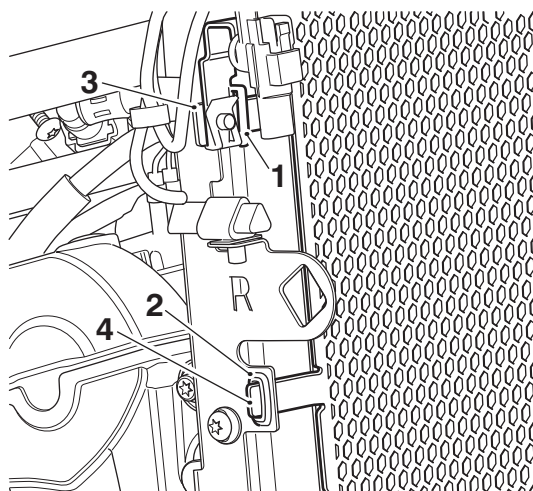
1. Rubber grommet (left hand shown)
2. Radiator bracket
3. Radiator

2. Collect the captive nuts supplied and slide over the radiator brackets ensuring they are positioned in the orientation shown below.



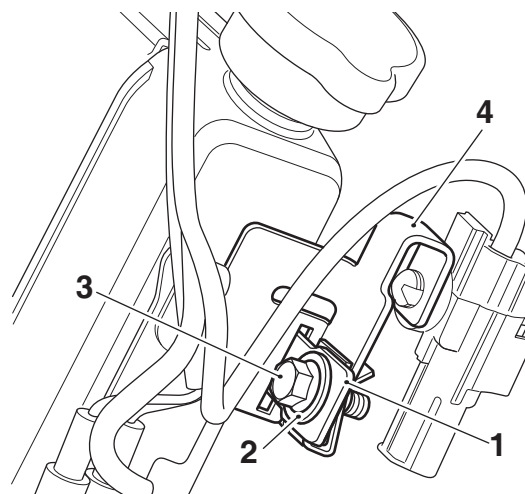
1. Captive nut
2. Radiator bracket (right hand shown)

3. Collect the accessory radiator guard supplied. With the Triumph symbol facing forwards, position the upper tang through the slot in the right hand radiator bracket and the lower tang through the rubber grommet, as shown below.



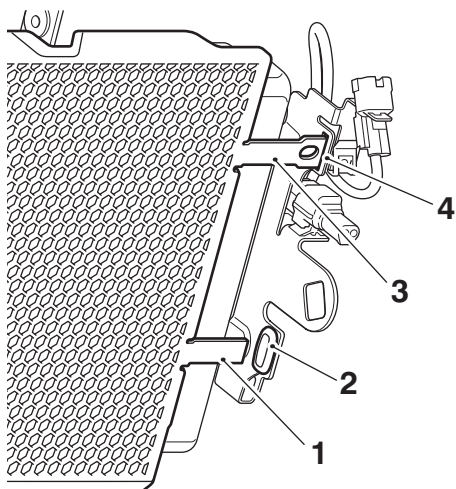
1. Radiator bracket slot (right hand shown)
2. Rubber grommet
3. Upper tang
4. Lower tang

4. Secure the radiator guard to the right hand radiator bracket with a washer and M5 x 15 mm bolt supplied as shown below. Do not fully tighten at this stage.



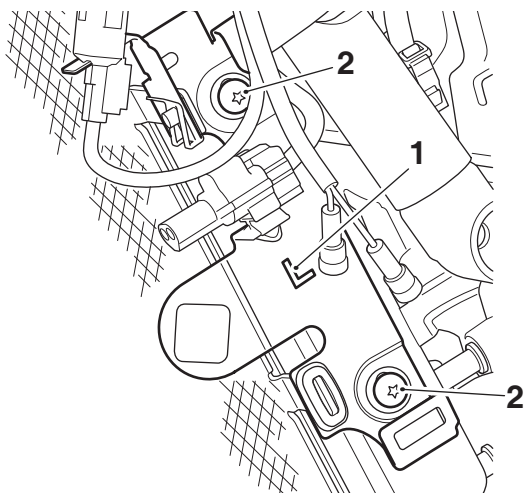
1. Radiator guard (right hand shown)
2. Washer
3. M5 x 15 mm bolt
4. Radiator bracket

5. Align the accessory radiator guard to the left hand radiator bracket, position the upper tang through the slot in the radiator bracket and the lower tang through the rubber grommet, as shown below.



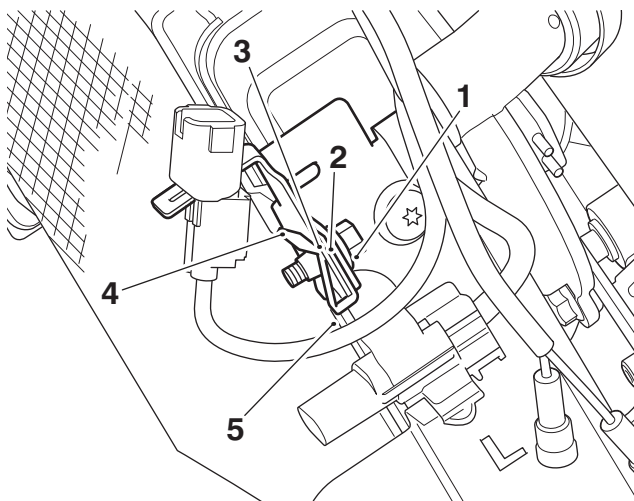
1. Lower tang
2. Rubber grommet
3. Upper tang
4. Radiator bracket slot

6. Using new fixings, position the left hand radiator bracket to the radiator, tightening the fixings to **6 Nm**.



1. Radiator bracket
2. Fixings

7. Secure the radiator guard to the left hand radiator bracket using a washer and M5 x 15 mm bolt supplied as shown below. Do not fully tighten at this stage.



1. Bolt
2. Washer
3. Radiator guard
4. Radiator bracket
5. Captive nut

8. Ensure the radiator guard is centrally located and level to the radiator, then tighten the bolts to **4 Nm**.
9. Refit the radiator upper panels, as described in the Service Manual.
10. Reconnect the battery, positive (red) lead first, refer to the Service Manual.
11. Refit the rider's seat, refer to the Service Manual.



Warning

If, after fitment of this accessory kit, you have any doubt about the performance of any aspect of the motorcycle, contact an authorised Triumph dealer and do not ride the motorcycle until the authorised dealer has declared it fit for use. Riding a motorcycle when there is any doubt as to any aspect of the performance of the motorcycle may result in loss of control of the motorcycle leading to an accident.



Warning

Never ride an accessory-equipped motorcycle at speeds above 80 mph (130 km/h).

The presence of accessories will cause changes in the stability and handling of the motorcycle. Failure to allow for changes in motorcycle stability may lead to loss of control or an accident.

Remember that the 80 mph (130 km/h) limit will be reduced by the fitting of non-approved accessories, incorrect loading, worn tyres, overall motorcycle condition and poor road or weather conditions



Warning

The motorcycle must not be operated above the legal road speed limit except in closed-course conditions.



Warning

Only operate this Triumph motorcycle at high speed in closed-course, on-road competition or on closed-course racetracks. High-speed operation should only be attempted by riders who have been instructed in the techniques necessary for high-speed riding and are familiar with the motorcycle's characteristics in all conditions.

High-speed operation in any other circumstances is dangerous and will lead to loss of motorcycle control and an accident.