



Accessory Fitting Instructions

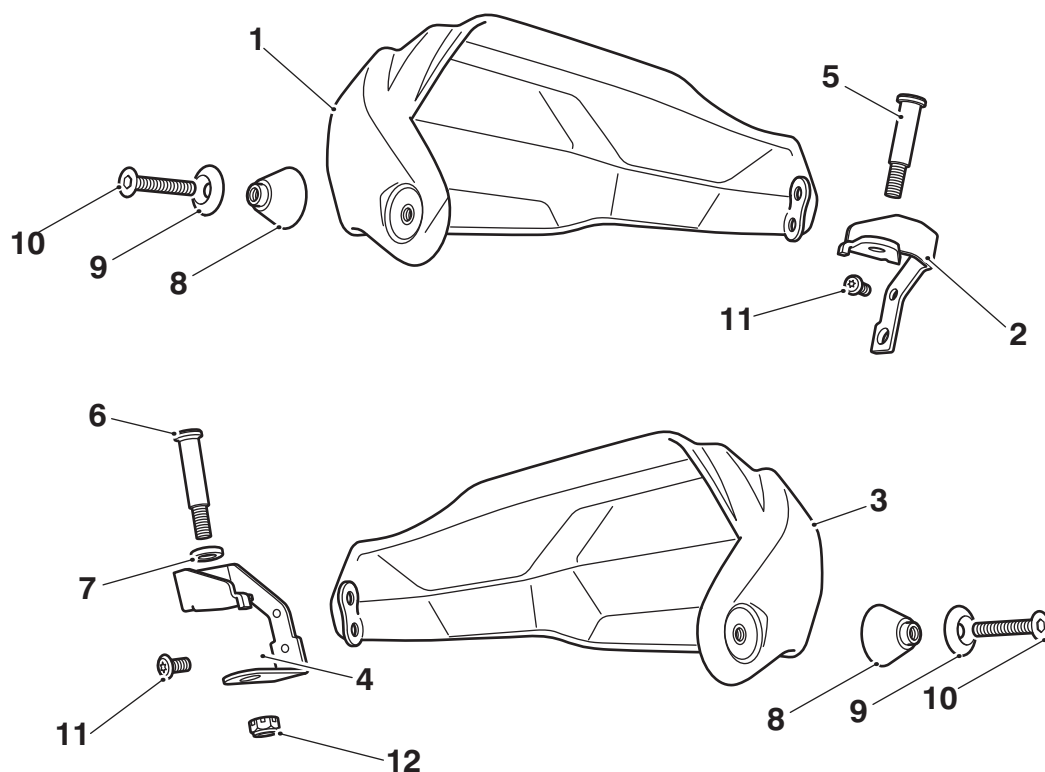
Handguard Kit	
Kit Number	Models Affected
A9708278	Tiger XR, Tiger XC, Tiger 800 XR

Thank you for choosing this Triumph genuine accessory kit. This accessory kit is the product of Triumph's use of proven engineering, exhaustive testing, and continuous striving for superior reliability, safety and performance.

Completely read all of these instructions before commencing the installation of the accessory kit in order to become thoroughly familiar with the kit's features and the installation process.

These instructions should be considered a permanent part of your accessory kit, and should remain with it even if your accessory equipped motorcycle is subsequently sold.

Parts Supplied



1. Handguard, left hand	1 off	7. Sleeve	1 off
2. Bracket, left hand	1 off	8. Handguard spacer	2 off
3. Handguard, right hand	1 off	9. Countersunk spacer	2 off
4. Bracket, right hand	1 off	10. Screw, M6 x 40 mm	2 off
5. Pivot bolt, clutch lever, 38 mm	1 off	11. Screw, M6 x 12 mm	2 off
6. Pivot bolt, brake lever, 45 mm	1 off	12. Lock nut (pivot bolt, brake lever)	1 off



Warning

The accessory kits covered in this instruction are designed for use on specific models of Triumph motorcycle. The accessory kits and the models applicable are listed at the start of the instruction. They should not be fitted to any other Triumph model or to any other manufacturer's motorcycle. Fitting an accessory kit to a Triumph model not listed, or to any other manufacturer's motorcycle will affect the performance, stability and handling of the motorcycle. This may result in loss of motorcycle control and an accident.



Warning

Always have Triumph approved parts, accessories and conversions fitted by a trained technician of an authorised Triumph dealer. The fitment of parts, accessories and conversions by a technician who is not of an authorised Triumph dealer may affect the handling, stability or other aspects of the motorcycle's operation which may result in loss of motorcycle control and an accident.



Warning

Throughout this operation, ensure that the motorcycle is stabilised and adequately supported to prevent risk of injury from the motorcycle falling.



Warning

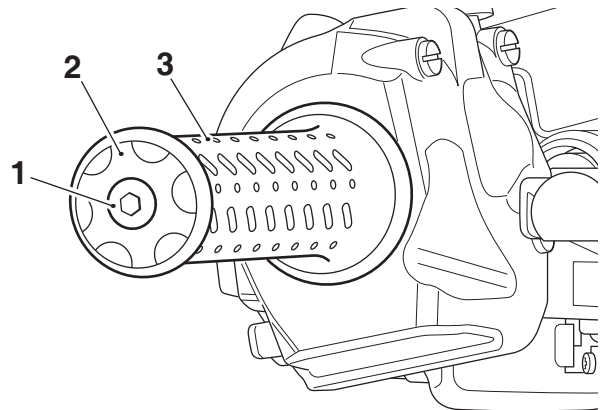
A torque wrench of known accurate calibration must be used when fitting this accessory kit. Failure to tighten any of the fasteners to the correct torque specification may affect motorcycle performance, handling and stability. This may result in loss of motorcycle control and an accident.

Note:

- Triumph offers a broad range of approved genuine accessories for your motorcycle. We cannot therefore cover all possible equipment variations in these instructions. For removal and installation of Triumph Genuine Accessories, always refer to the instructions supplied with the respective accessory kit. To obtain additional copies of any Triumph accessory instructions, visit www.triumphinstructions.com or contact your authorised Triumph dealer.

Removal

- Undo and remove both hand handlebar screws and end weights. Discard the screws. Retain the bar end weights if the motorcycle is to be returned to its original condition.



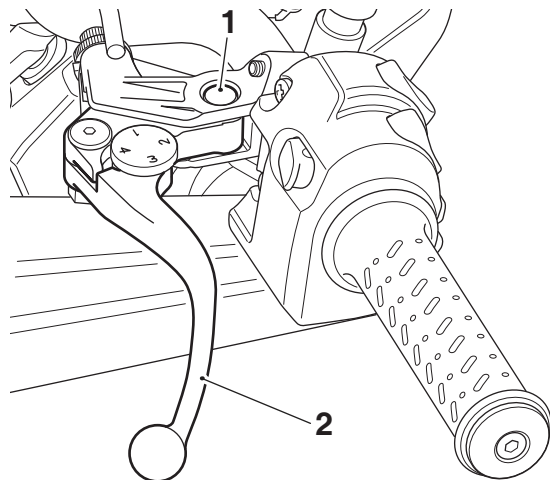
1. Screw

2. Handlebar end weight (right hand shown)

3. Handlebar grip

Left Hand Side

- Remove the clutch lever pivot bolt and lock nut. Retain the lock nut for reuse. Retain the clutch lever pivot bolt if the motorcycle is to be returned to its original condition.



1. Clutch lever pivot bolt

2. Clutch lever

Note:

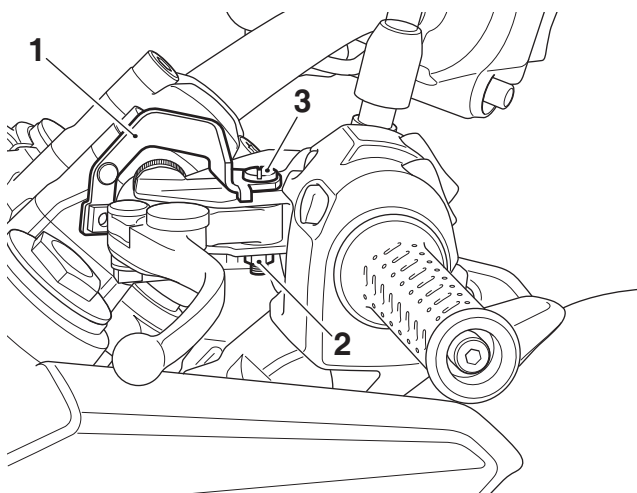
- **Lock nuts can be reused, providing resistance can be felt when the locking portion passes over the thread of the bolt or stud.**
- **Always use the correct replacement lock nut as recommended in the Triumph parts catalogue.**



Caution

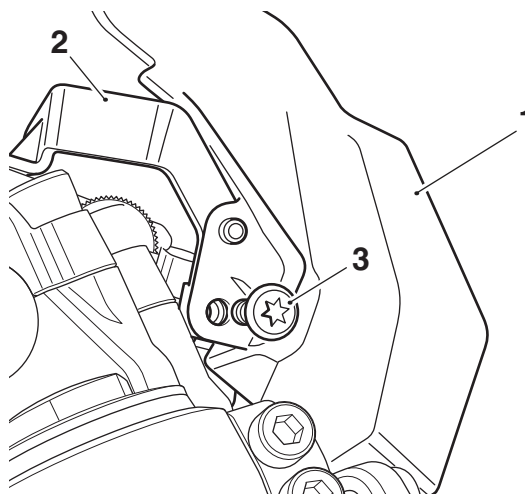
When aligning the handguard bracket and clutch lever to the clutch lever bracket, care must be taken to ensure that the clutch lever is correctly positioned against the clutch switch. A clutch lever that is incorrectly positioned may damage the clutch switch plunger, causing failure of the clutch switch. An inoperative or incorrectly functioning clutch switch may prevent the motorcycle from starting or prevent operation of the cruise control and riding mode functions.

3. Collect the accessory clutch lever pivot bolt and left hand handguard bracket from the kit. Align the handguard bracket to the clutch lever bracket, ensuring the holes in the handguard bracket and clutch lever bracket are aligned. Fit the accessory clutch lever pivot bolt and then the original lock nut removed in the previous step.
 - Tighten the accessory clutch lever pivot bolt to **1 Nm**.
 - Counter hold the pivot bolt and tighten the pivot bolt lock nut to **6 Nm**.



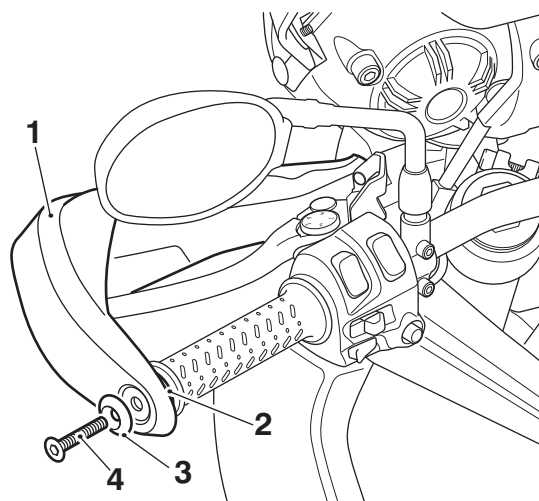
1. Handguard bracket, left hand
2. Lock nut
3. Accessory clutch lever pivot bolt

4. Collect the left hand handguard and a M6 x 12 mm screw from the kit. Fit the left hand handguard to the left hand handguard bracket and secure using the M6 x 12 mm screw. Do not fully tighten the screw at this stage.



1. Handguard, left hand
2. Handguard bracket, left hand
3. M6 x 12 mm screw

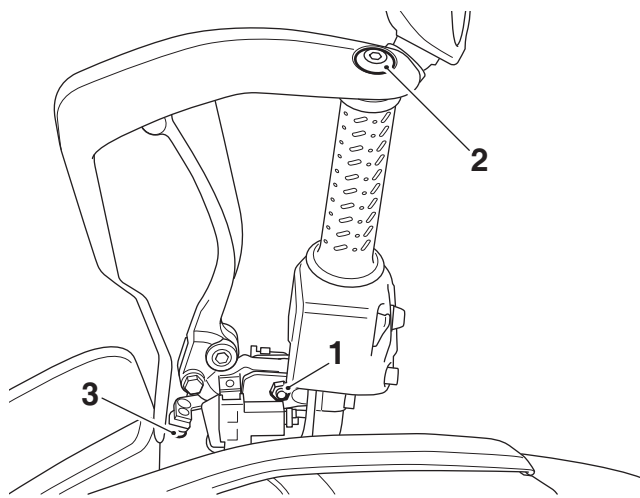
5. Collect a handguard spacer, countersunk spacer and a M6 x 40 mm screw from the kit. Position the spacer between the handlebar and the handguard and secure using the countersunk spacer and the screw. Do not fully tighten the screw at this stage.



1. Handguard, left hand
2. Handguard spacer
3. Countersunk spacer
4. M6 x 40 mm screw

6. Position the handguard to allow hand clearance around the clutch lever.

- Tighten the M6 x 40 mm screw to **5 Nm**.
- Tighten the M6 x 12 mm screw to **6 Nm**.



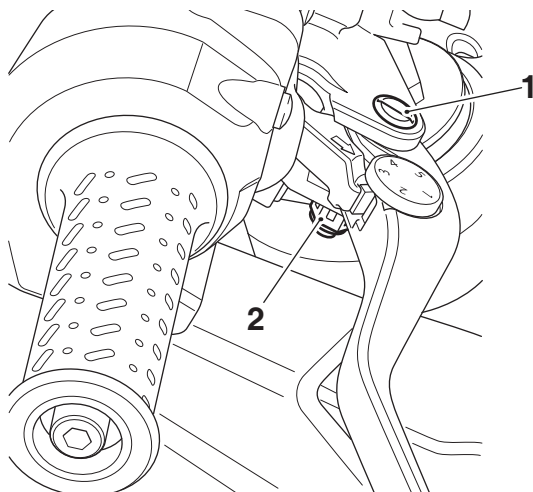
1. Clutch lever pivot bolt and lock nut
2. M6 x 40 mm screw
3. M6 x 12 mm screw

Right Hand Side

Note:

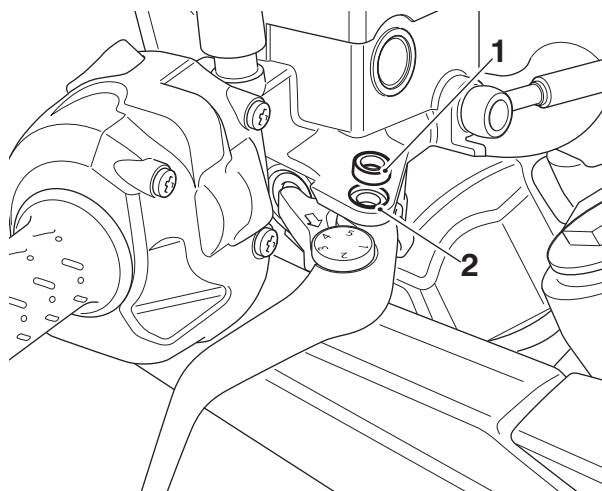
- **The brake lever will become detached from the master cylinder when the pivot bolt is removed.**

1. Remove the brake lever pivot bolt and lock nut. Retain the brake lever pivot bolt and lock nut if the motorcycle is to be returned to its original condition.



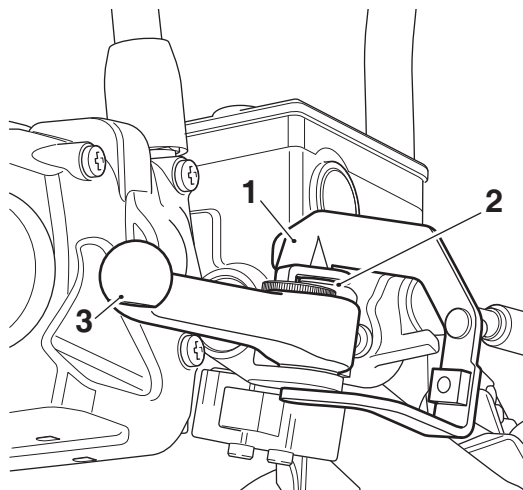
1. Pivot bolt
2. Lock nut

2. Collect the sleeve from the kit and position into the recess on the master cylinder housing.



1. Sleeve
2. Recess

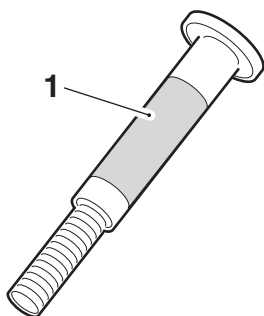
3. Collect the right hand handguard bracket from the kit. Align the handguard bracket to the master cylinder housing, ensuring the holes in the handguard bracket and master cylinder housing are aligned.



1. Handguard bracket, right hand
2. Sleeve
3. Brake lever

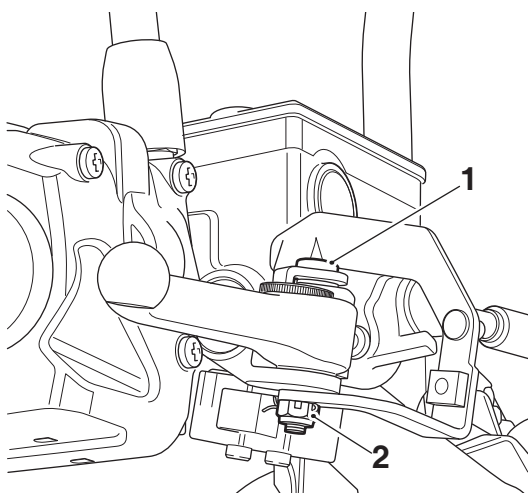
Note:

- **Do not allow the grease to make contact with the threaded part of the pivot bolt.**
4. Collect the accessory brake lever pivot bolt from the kit and smear its shank surface with Castrol Red Rubber Grease.



Area to be greased

5. Collect the accessory brake lever pivot bolt lock nut from the kit.
6. Fit the accessory brake lever pivot bolt and the accessory pivot bolt lock nut to the master cylinder housing as shown below.
 - Tighten the accessory brake lever pivot bolt to **1 Nm**.
 - Counter hold the pivot bolt and tighten the accessory pivot bolt lock nut to **6 Nm**.

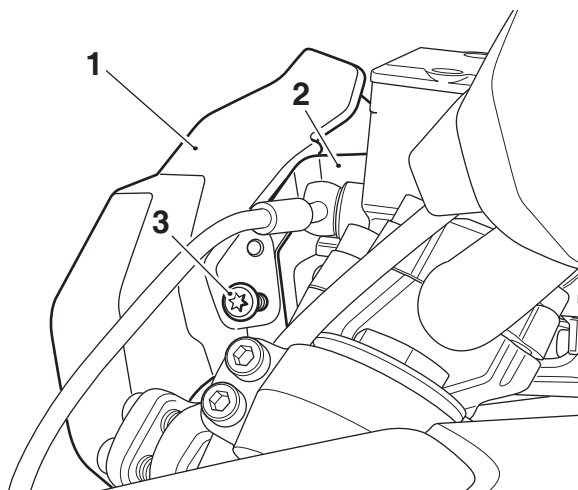


1. Accessory brake lever pivot bolt
2. Accessory pivot bolt lock nut

Note:

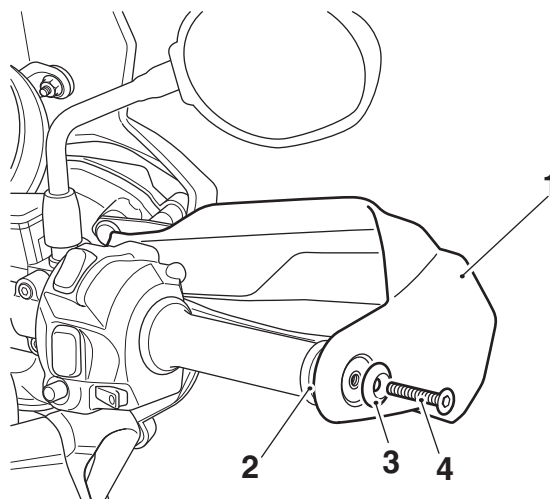
- Lock nuts can be reused, providing resistance can be felt when the locking portion passes over the thread of the bolt or stud.

- **Always use the correct replacement lock nut as recommended in the Triumph parts catalogue.**
7. Collect the right hand handguard and the remaining M6 x 12 mm screw from the kit. Fit the right hand handguard to the right hand handguard bracket and secure using the M6 x 12 mm screw. Do not fully tighten the screw at this stage.



1. Handguard, right hand
2. Handguard bracket, right hand
3. M6 x 12 mm screw

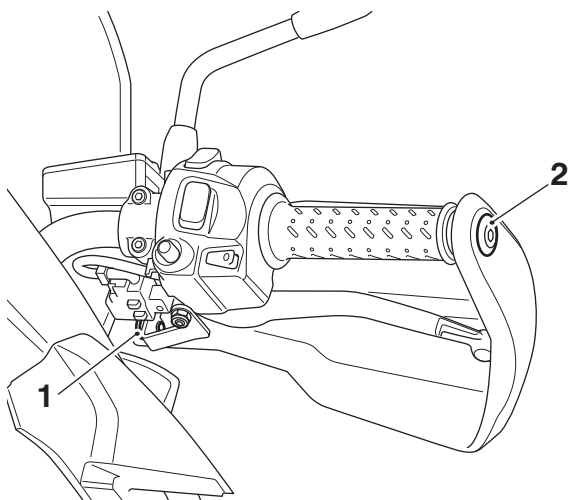
8. Collect the remaining handguard spacer, countersunk spacer and screw from the kit. Position the spacer between the handlebar and the handguard and secure using the countersunk spacer and the M6 x 40 mm screw. Do not fully tighten the screw at this stage.



1. Handguard, right hand
2. Handguard spacer
3. Countersunk spacer
4. M6 x 40 mm screw

9. Position the handguard to allow hand clearance around the clutch lever.

- Tighten the M6 x 40 mm screw to **5 Nm**.
- Tighten the M6 x 12 mm screw to **6 Nm**.



1. M6 x 12 mm screw
2. M6 x 40 mm screw

Warning

It is dangerous to operate the motorcycle with defective brakes; you must have your authorised Triumph dealer take remedial action. Failure to take remedial action will reduce braking efficiency leading to loss of motorcycle control and an accident.

10. Check that both the clutch and brake lever operate correctly and are not restricted by the handguards.
11. Check for correct operation of the brake light.

Warning

Riding a motorcycle when there is any doubt as to any aspect of the performance of the throttle operation may result in loss of control of the motorcycle and an accident.

12. Check the operation of the throttle twist grip and ensure that its operation is not restricted in any way by the handguard.

Warning

Move the handlebars to left and right full lock while checking that the handguards do not restrict full lock operation. Check cables or harnesses do not bind or restrict full lock operation. Any component, cables or harnesses that will restrict the steering may cause loss of control of the motorcycle and an accident.

Warning

After fitting the accessory kit the motorcycle will exhibit new handling characteristics. Operate the motorcycle in a safe area free from traffic to gain familiarity with any new characteristics. Operation of the motorcycle when not familiar with any new handling characteristics may result in loss of motorcycle control and an accident.

Warning

If, after fitment of this accessory kit, you have any doubt about the performance of any aspect of the motorcycle, contact an authorised Triumph dealer and do not ride the motorcycle until the authorised dealer has declared it fit for use. Riding a motorcycle when there is any doubt as to any aspect of the performance of the motorcycle may result in loss of control of the motorcycle leading to an accident.

Warning

Never ride an accessory-equipped motorcycle at speeds above 80 mph (130 km/h).

The presence of accessories will cause changes in the stability and handling of the motorcycle. Failure to allow for changes in motorcycle stability may lead to loss of control or an accident.

Remember that the 80 mph (130 km/h) limit will be reduced by the fitting of non-approved accessories, incorrect loading, worn tyres, overall motorcycle condition and poor road or weather conditions.

Warning

The motorcycle must not be operated above the legal road speed limit except in closed-course conditions.

Warning

Only operate this Triumph motorcycle at high speed in closed-course, on-road competition or on closed-course racetracks. High-speed operation should only be attempted by riders who have been instructed in the techniques necessary for high-speed riding and are familiar with the motorcycle's characteristics in all conditions.

High-speed operation in any other circumstances is dangerous and will lead to loss of motorcycle control and an accident.