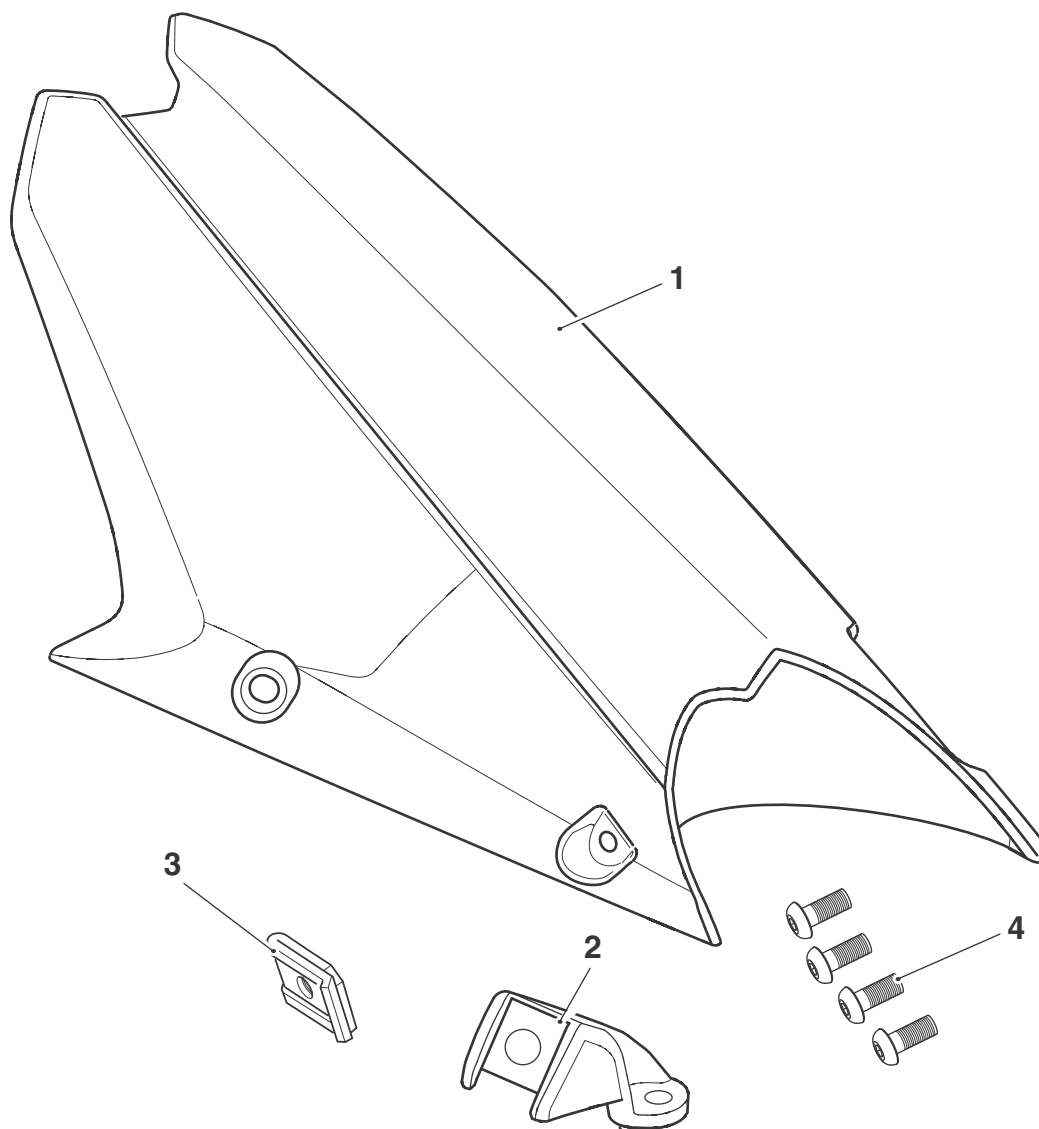


### Fitting Instructions: Street Triple from VIN 560477 A9708268

Thank you for choosing this Triumph genuine accessory kit. This accessory kit is the product of Triumph's use of proven engineering, exhaustive testing, and continuous striving for superior reliability, safety and performance.

Completely read all of these instructions before commencing the installation of the accessory kit in order to become thoroughly familiar with the kit's features and the installation process.

These instructions should be considered a permanent part of your accessory kit, and should remain with it even if your accessory-equipped motorcycle is subsequently sold.



#### Parts Supplied:

1. Hugger	1 off	3. Captive nut	1 off
2. Hugger bracket	1 off	4. Screw, M6 x 16 mm	4 off



## Warning

This accessory kit is designed for use on Triumph Street Triple from VIN 560477 motorcycles only and should not be fitted to any other Triumph model or to any other manufacturer's motorcycle. Fitting this accessory kit to any other Triumph model or to any other manufacturer's motorcycle will affect the performance, stability and handling of the motorcycle. This may affect the rider's ability to control the motorcycle and could cause an accident.



## Warning

Always have Triumph approved parts, accessories and conversions fitted by a trained technician of an authorised Triumph dealer. The fitment of parts, accessories and conversions by a technician who is not of an authorised Triumph dealer may affect the handling, stability or other aspects of the motorcycle's operation which may result in loss of motorcycle control and an accident.



## Warning

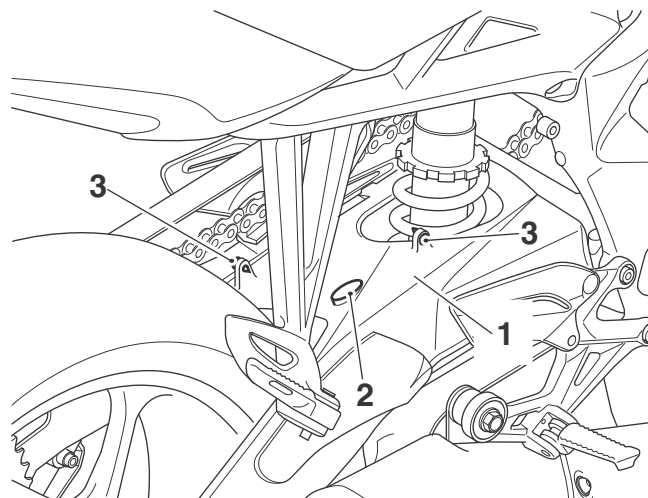
Throughout this operation, ensure that the motorcycle is stabilised and adequately supported to prevent risk of injury from the motorcycle falling.



## Warning

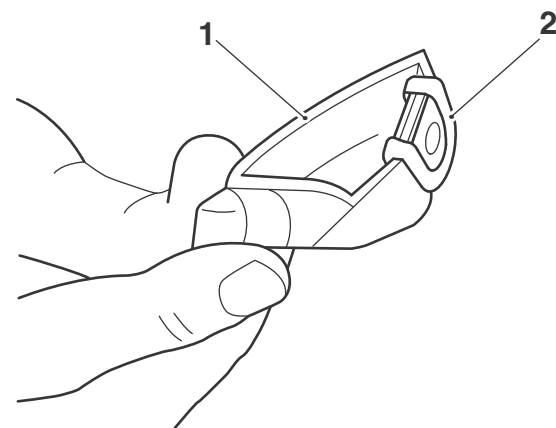
A torque wrench of known accurate calibration must be used when fitting this accessory kit. Failure to tighten any of the fasteners to the correct torque specification may result in loss of motorcycle control and an accident.

1. Remove the blanking plug and fir-tree clips from the hugger mounting points on the swinging arm. Retain the blanking plug and fir-tree clips for use if the motorcycle is to be returned to its original condition.



- 1. Swinging arm
- 2. Blanking plug
- 3. Fir-tree clip

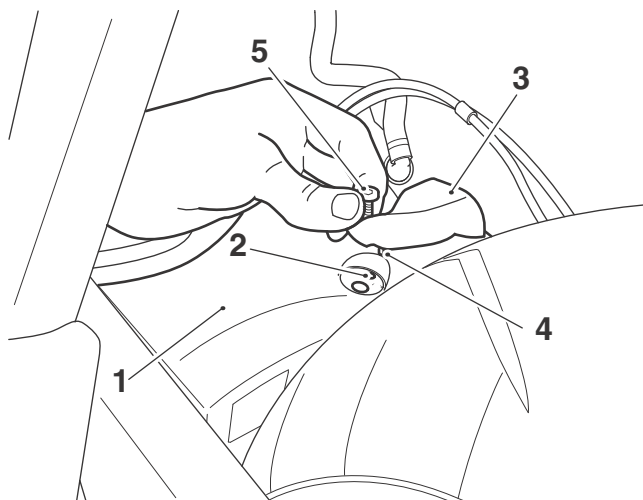
1. Collect the hugger bracket from the kit and fit the captive nut, as shown.



- 1. Hugger bracket
- 2. Captive nut

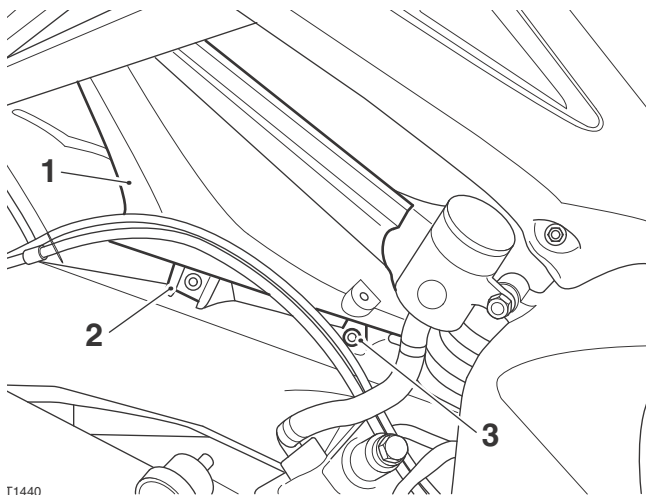
38

2. Fit the hugger bracket, in the orientation shown, on to the right hand side of the swinging arm. Ensure the peg on the bracket sits correctly in the location hole in the swinging arm. Secure the bracket with one of the M6 x 16 mm screws provided.



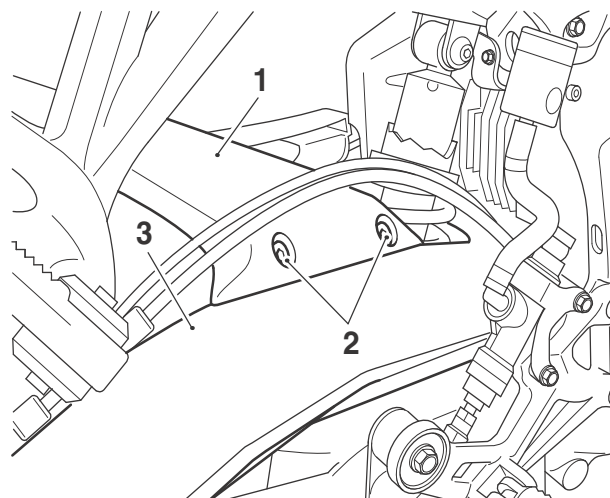
1. Swinging arm
2. Location hole
3. Hugger bracket
4. Peg, hugger bracket
5. Screw, M6 x 16 mm

3. Tighten the screw to 6 Nm.
4. Fit the hugger in position on the swinging arm and align the fixing holes with the hugger bracket and front fixing location on the right hand side of the swinging arm.



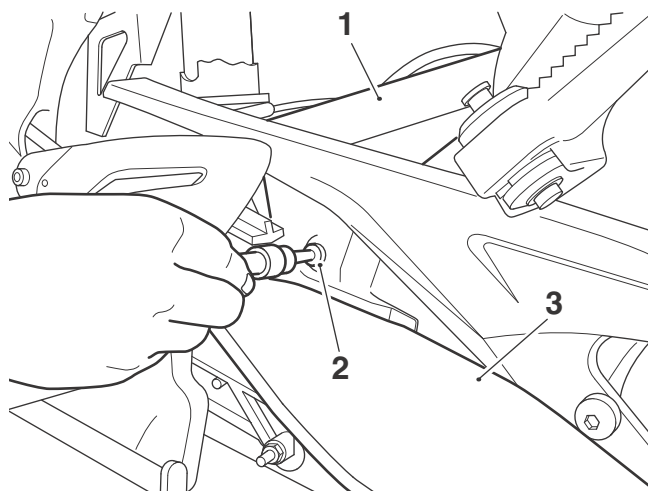
- T1440
1. Hugger
  2. Hugger bracket
  3. Fixing location, swinging arm

5. Fit two of the M6 x 16 mm screws provided to secure the hugger to the swinging arm and hugger bracket. Do not fully tighten the fixings at this stage.



1. Hugger
2. Screw, M6 x 16 mm
3. Swinging arm, right hand side

6. Fit the remaining M6 x 16 mm screw to secure the hugger to the left hand side of the swinging arm. Do not fully tighten the fixings at this stage.



1. Hugger
2. Screw, M6 x 16 mm
3. Swinging arm, left hand side

7. Ensure the hugger is aligned correctly on the swinging arm and there is sufficient clearance for the rear wheel.
8. Tighten the hugger retaining screws to 6 Nm.



### Warning

After fitting the accessory kit the motorcycle will exhibit new handling characteristics. Operate the motorcycle in a safe area free from traffic to gain familiarity with any new characteristics. Operation of the motorcycle when not familiar with any new handling characteristics may result in loss of motorcycle control and an accident.



### Warning

If, after fitment of this accessory kit, you have any doubt about the performance of any aspect of the motorcycle, contact an authorised Triumph dealer and do not ride the motorcycle until the authorised dealer has declared it fit for use. Riding a motorcycle when there is any doubt as to any aspect of the performance of the motorcycle may result in loss of control of the motorcycle leading to an accident.



### Warning

Never ride an accessory-equipped motorcycle at speeds above 80 mph (130 km/h).

The presence of accessories will cause changes in the stability and handling of the motorcycle. Failure to allow for changes in motorcycle stability may lead to loss of control or an accident.

Remember that the 80 mph (130 km/h) limit will be reduced by the fitting of non-approved accessories, incorrect loading, worn tyres, overall motorcycle condition and poor road or weather conditions.



### Warning

The motorcycle must not be operated above the legal road speed limit except in closed course conditions.



### Warning

Only operate this Triumph motorcycle at high speed in closed course on road competition or on closed course race tracks. High speed operation should only be attempted by riders who have been instructed in the techniques necessary for high speed riding and are familiar with the motorcycle's characteristics in all conditions. High speed operation in any other circumstances is dangerous and will lead to loss of motorcycle control and an accident.