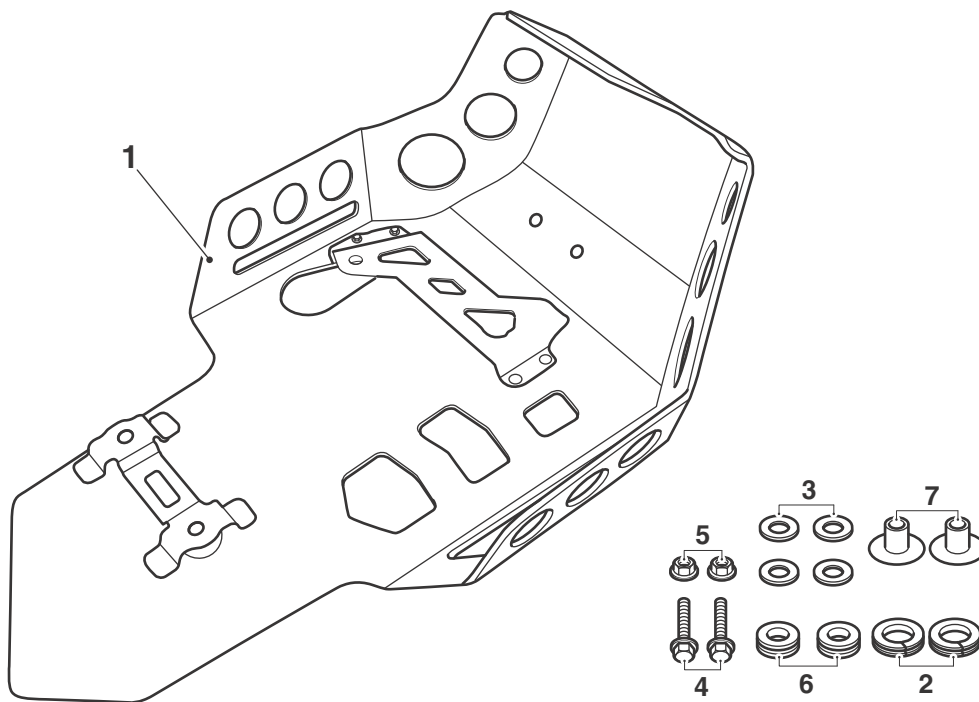


Fitting Instructions:
Tiger 800 and Tiger 800XC
A9708233 and A9708361

Thank you for choosing this Triumph genuine accessory kit. This accessory kit is the product of Triumph's use of proven engineering, exhaustive testing, and continuous striving for superior reliability, safety and performance.

Completely read all of these instructions before commencing the installation of the accessory kit in order to become thoroughly familiar with the kit's features and the installation process.

These instructions should be considered a permanent part of your accessory kit, and should remain with it even if your accessory-equipped motorcycle is subsequently sold.



cgry

Parts Supplied:

1. Sump guard	1 off	5. Locknut, M6	2 off
2. Split bush	2 off	6. Grommet	2 off
3. Washer, M6	4 off	7. Flanged sleeve	2 off
4. Screw, M6 x 35 mm	2 off		

Warning

This accessory kit is designed for use on Triumph Tiger 800 and Tiger 800XC motorcycles only and should not be fitted to any other manufacturer's motorcycle. Fitting this accessory kit to any other manufacturer's motorcycle will affect the performance, stability and handling of the motorcycle. This may affect the rider's ability to control the motorcycle and could cause an accident.

Warning

Always have Triumph approved parts, accessories and conversions fitted by a trained technician of an authorised Triumph dealer. The fitment of parts, accessories and conversions by a technician who is not of an authorised Triumph dealer may affect the handling, stability or other aspects of the motorcycle's operation which may result in loss of motorcycle control and an accident.

Warning

Throughout this operation, ensure that the motorcycle is stabilised and adequately supported to prevent risk of injury from the motorcycle falling.

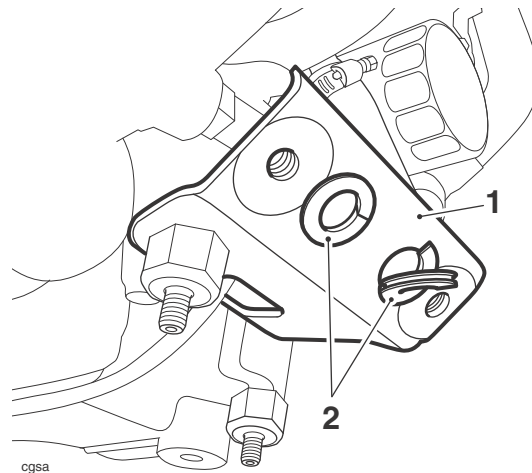
Warning

A torque wrench of known accurate calibration must be used when fitting this accessory kit. Failure to tighten any of the fasteners to the correct torque specification may affect motorcycle performance, handling and stability. This may result in loss of motorcycle control and an accident.

Warning

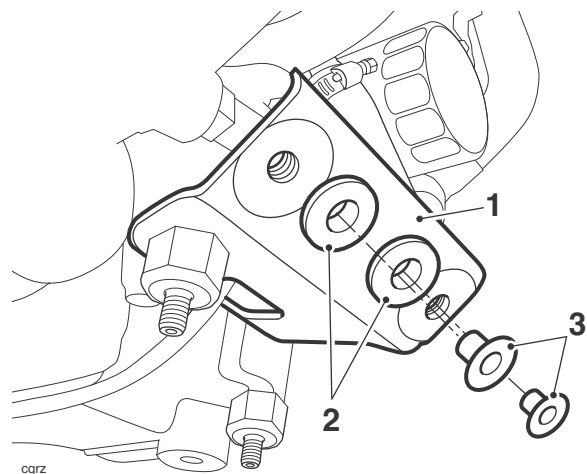
If the engine has recently been running, the exhaust system will be hot. Before working on or near the exhaust system, allow sufficient time for the system to cool, as touching any part of a hot exhaust could cause burn injuries.

1. Remove the standard sump guard as described in the service manual. Do not remove the front mounting bracket or rubber mountings. Retain the four lock nuts for re-use.
2. Retain the sump guard and two front bolts for re-use if the motorcycle is to be returned to its original condition.
3. Insert a split bush to each front mounting bracket hole.



1. Sump guard front mounting bracket
2. Split bush

4. Insert a grommet through each split bush.
5. Fit a flanged sleeve to each grommet.

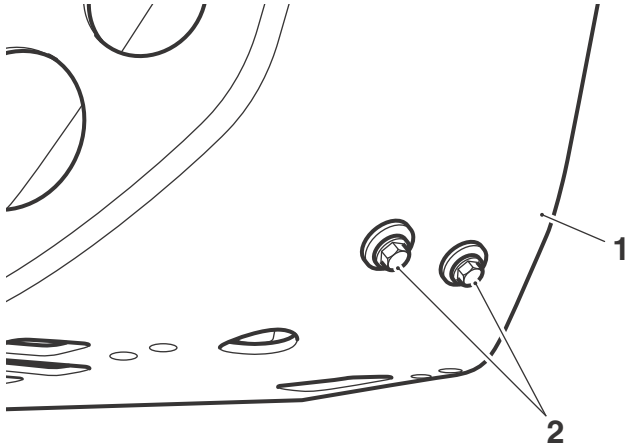


1. Sump guard front mounting bracket
2. Grommet
3. Flanged sleeves

Note:

- Lock nuts can be re-used, providing resistance can be felt when the locking portion passes over the thread of the bolt or stud. Always use the correct replacement locknut as recommended in the Triumph parts catalogue.

6. Fit the sump guard, taking care that the oxygen sensor harness is not trapped, and secure with the four original lock nuts. Do not tighten the nuts at this stage.
7. Fit a washer to the two M6 x 35 mm screws and fit the screws to sump guard front fixing positions. Fit a second washer to each screw (inside the sump guard) and secure with the M6 lock nuts. Tighten to **9 Nm**.



1. Sump guard
2. Screws and washers

8. Using a suitable spanner, retain the lower rubber sump guard mountings to prevent them from rotating and tighten the lock nuts to **10 Nm**.

Warning

If, after fitment of this accessory kit, you have any doubt about the performance of any aspect of the motorcycle, contact an authorised Triumph dealer and do not ride the motorcycle until the authorised dealer has declared it fit for use. Riding a motorcycle when there is any doubt as to any aspect of the performance of the motorcycle may result in loss of control of the motorcycle leading to an accident.

Caution

The sump guard does not provide complete protection from damage to the underside of the motorcycle. Care must be taken to avoid contact between the underside of the motorcycle and any hard or sharp objects. Damage to the underside of the motorcycle may occur if it is allowed to come in to contact with any hard or sharp objects.

Caution

Do not support or jack up the motorcycle using the sump guard. Damage to the sump guard or the motorcycle itself will result if this caution is ignored.

Warning

After fitting the accessory kit the motorcycle will exhibit new handling characteristics. Operate the motorcycle in a safe area free from traffic to gain familiarity with any new characteristics. Operation of the motorcycle when not familiar with any new handling characteristics may result in loss of motorcycle control and an accident.

Warning

Never ride an accessory equipped motorcycle at speeds above 80 mph (130 km/h).

The presence of accessories will cause changes in the stability and handling of the motorcycle. Failure to allow for changes in motorcycle stability may lead to loss of control or an accident.

Remember that the 80 mph (130 km/h) limit will be reduced by the fitting of non-approved accessories, incorrect loading, worn tyres, overall motorcycle condition and poor road or weather conditions.

Warning

The motorcycle must not be operated above the legal road speed limit except in closed course conditions.

Warning

Only operate this Triumph motorcycle at high speed in closed-course on road competition or on closed course racetracks. High speed operation should only be attempted by riders who have been instructed in the techniques necessary for high speed riding and are familiar with the motorcycle's characteristics in all conditions.

High speed operation in any other circumstances is dangerous and will lead to loss of motorcycle control and an accident.