

Fitting Instructions:

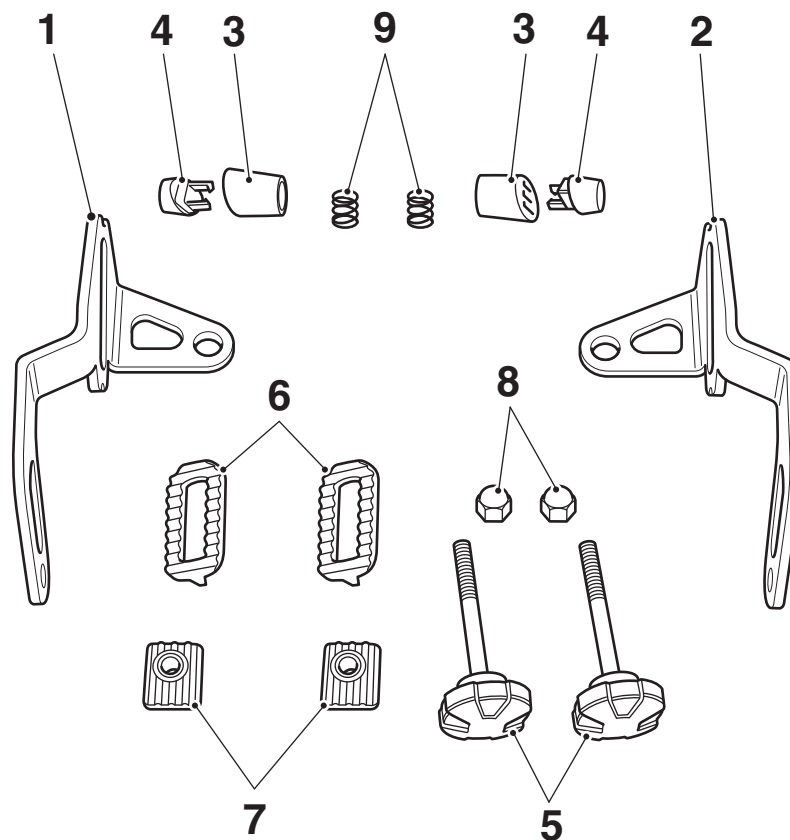
Tiger XR, Tiger XR_T, Tiger XR_x, Tiger XC, Tiger XC_A, Tiger XC_x,
Tiger 800, Tiger 800 XC, Tiger 800 XR

A9708218

Thank you for choosing this Triumph genuine accessory kit. This accessory kit is the product of Triumph's use of proven engineering, exhaustive testing, and continuous striving for superior reliability, safety and performance.

Completely read all of these instructions before commencing the installation of the accessory kit in order to become thoroughly familiar with the kit's features and the installation process.

These instructions should be considered a permanent part of your accessory kit, and should remain with it even if your accessory-equipped motorcycle is subsequently sold.



T0953

Parts Supplied:

1. Mounting bracket LH	1 off	6. Adjustment plate	2 off
2. Mounting bracket RH	1 off	7. Adjustment block	2 off
3. Spacer, inner	2 off	8. Dome nut, M6	2 off
4. Spacer, outer	2 off	9. Spring	2 off
5. Adjustment knob	2 off		



Warning

The accessory kits covered in this instruction are designed for use on specific models of Triumph motorcycle. The accessory kits and the models applicable are listed at the start of the instruction. They should not be fitted to any other Triumph model or to any other manufacturer's motorcycle. Fitting an accessory kit to a Triumph model not listed, or to any other manufacturer's motorcycle will affect the performance, stability and handling of the motorcycle. This may affect the rider's ability to control the motorcycle and could cause an accident.



Warning

Always have Triumph approved parts, accessories and conversions fitted by a trained technician of an authorised Triumph dealer. The fitment of parts, accessories and conversions by a technician who is not of an authorised Triumph dealer may affect the handling, stability or other aspects of the motorcycle's operation which may result in loss of motorcycle control and an accident.



Warning

Throughout this operation, ensure that the motorcycle is stabilised and adequately supported to prevent risk of injury from the motorcycle falling.



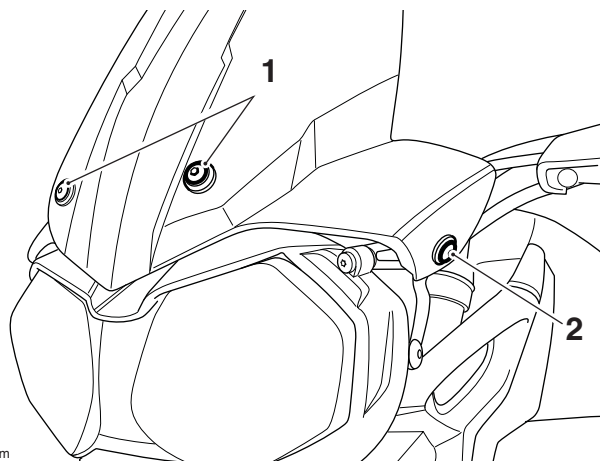
Warning

A torque wrench of known accurate calibration must be used when fitting this accessory kit. Failure to tighten any of the fasteners to the correct torque specification may affect motorcycle performance, handling and stability. This may result in loss of motorcycle control and an accident.

Note:

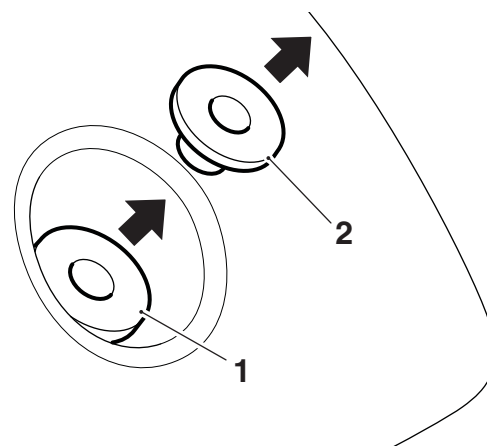
- Triumph offers a broad range of approved genuine accessories for your motorcycle. We cannot therefore cover all possible equipment variations in these instructions. For removal and installation of Triumph Genuine Accessories always refer to the instructions supplied with the respective accessory kit. To obtain additional copies of any Triumph accessory instructions, visit www.triumphinstructions.com or contact your authorised Triumph dealer.

1. Release the two front mounting screws, collecting the lock nuts from the inside of the mounting as you do so. Retain the fixings for re-use.
2. Release the left and right hand side screws and lock nuts and remove the windscreen. Retain the fixings for re-use if the motorcycle is to be returned to its original condition.



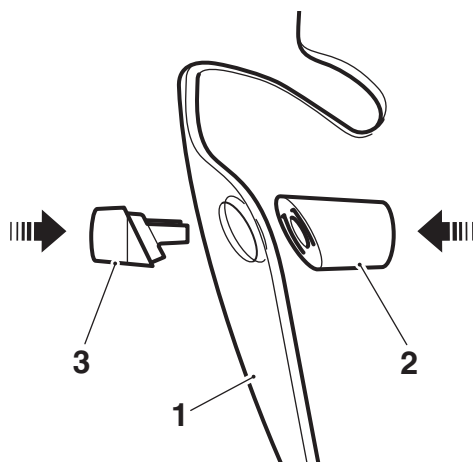
cgnm

1. Front mounting fixings
2. Side mounting fixings (left hand shown)
3. Remove the two side mounting flanged sleeves and grommets from the windscreen. Retain the flanged sleeves and grommets for re-use if the motorcycle is to be returned to its original condition.



1. Grommet
2. Flanged sleeve

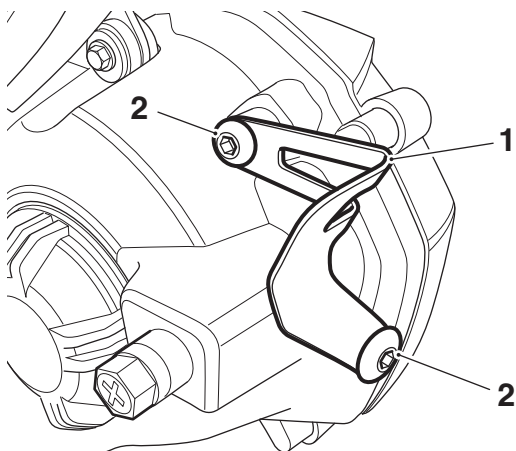
4. Fit an inner and outer spacer to each side of the windscreen and clip together as shown below.



cgnt_1

1. Windscreen
2. Inner spacer
3. Outer spacer

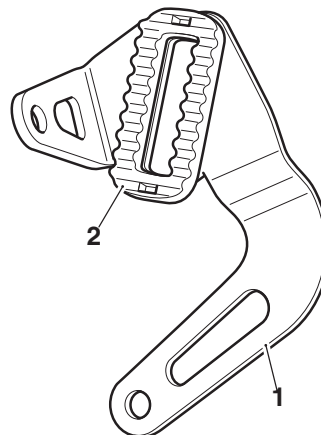
5. Noting the location of the fixings, remove the left hand and right hand windscreen mounting brackets from the headlamp.
Retain the four fixings for re-use.
Retain the brackets for re-use if the motorcycle is to be returned to its original condition.



cgnn

1. Windscreen mounting bracket (right hand shown)
2. Fixings

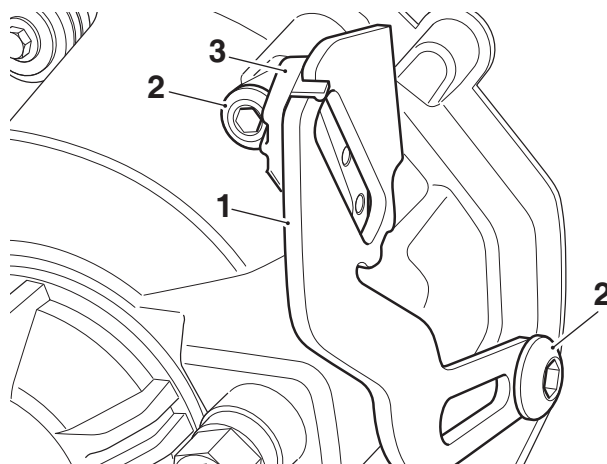
6. From the parts supplied, attach the adjustment plates to the left hand and the right hand mounting brackets as shown below.



T0954

1. Mounting bracket (right hand shown)
2. Adjustment plate

7. Fit the left hand and the right hand mounting brackets to the headlamp, using the original fixings in the locations noted during disassembly. Tighten the fixings to **5 Nm**.

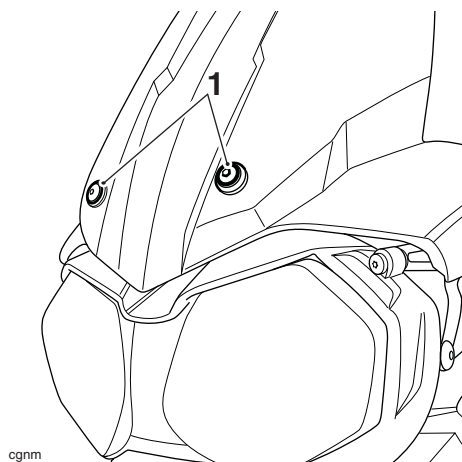


1. Windscreen mounting bracket (right hand shown)
2. Fixings
3. Adjustment plate

Note:

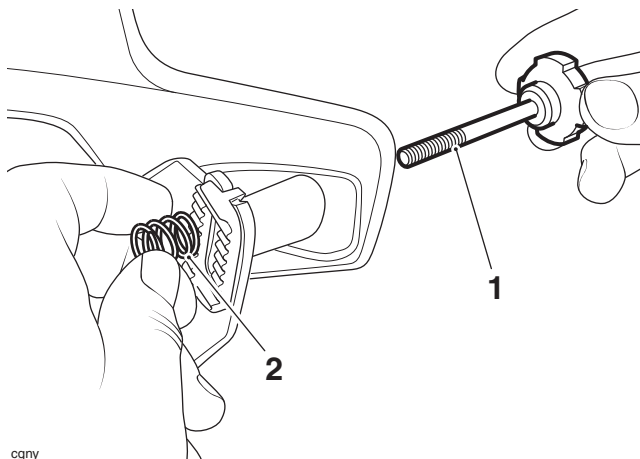
- Lock nuts can be re-used providing resistance can be felt when the locking portion passes over the thread of the bolt or stud.
Always use the correct replacement lock nut as recommended in the Triumph parts catalogue.

8. Fit the windscreen to the front mounting, using the original fixings. Tighten the fixings to **3 Nm**.



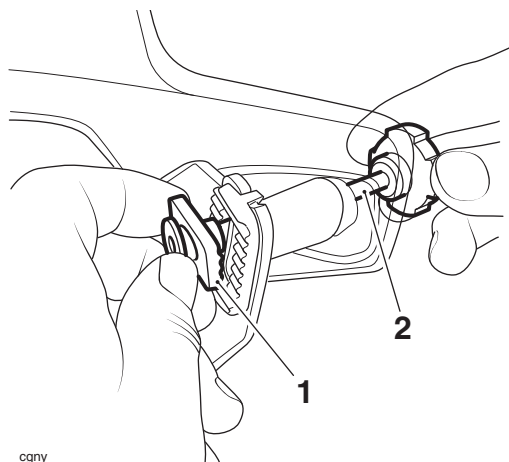
1. Fixings

9. Insert an adjustment knob through the right hand inner and outer spacers and mounting bracket and fit a spring over the adjustment knob thread as shown below.



- 1. Adjustment knob**
2. Spring

10. Position an adjustment block to the right hand mounting bracket and secure in position using the adjustment knob as shown below. Tighten the adjustment knob by hand.



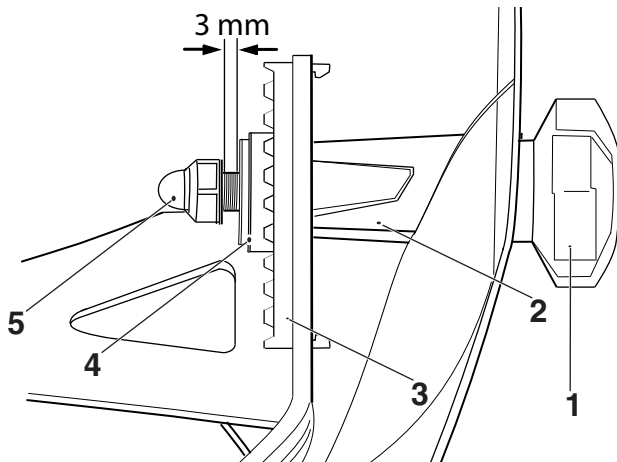
- 1. Adjustment block**
2. Adjustment knob

11. Repeat steps 9 and 10 for the left hand side.
12. Ensure the adjustment blocks are both set to the same position against the adjustment plates.
13. Screw a dome nut from the kit onto the threaded part of each of the adjustment knobs until an increase in resistance can be felt.

Note:

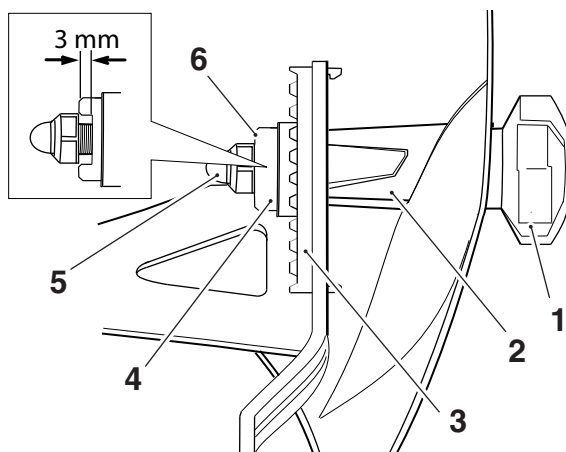
- If the kit is supplied with the adjuster blocks that **ARE NOT** shouldered, continue from step 14 and omit step 15.
- If the kit is supplied with the adjuster blocks that **ARE** shouldered, omit step 14 and continue from step 15.

14. Tighten each dome nut until there is 3 mm of thread visible between the dome nut and the adjustment block.



1. Adjustment knob (right hand shown)
2. Inner spacer
3. Adjustment plate
4. Adjustment block
5. Dome nut

15. Tighten each dome nut until its base is flush with the adjustment block shoulder.



1. Adjustment knob (right hand shown)
2. Inner spacer
3. Adjustment plate
4. Adjustment block, shouldered
5. Dome nut
6. Shoulder's upper edge



Warning

Always ensure both windscreen adjusters are adjusted to the same position. Riding the motorcycle with an incorrectly adjusted windscreen could cause loss of motorcycle control and an accident.

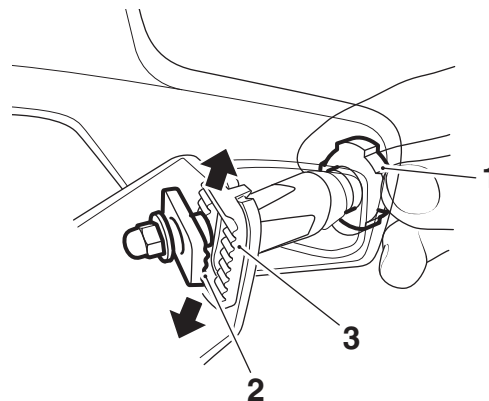


Warning

Always ensure both windscreen adjusters are tightened before riding the motorcycle. Riding the motorcycle with a loose windscreen or windscreen adjuster could cause loss of motorcycle control and an accident.

Windscreen Adjustment

1. Loosen the adjustment knob sufficiently to allow the adjustment block to slide over the adjustment plate.
2. Position the windscreen to the desired height, ensuring both adjustment blocks are set to the same position.
3. Tighten the adjustment knob by hand to secure the windscreen in position.



cgny

1. Adjustment knob
2. Adjustment block
3. Adjustment plate



Warning

The windscreen is no substitute for a safety helmet or eye protection. Windscreens are designed to provide wind protection and increased rider comfort. They are not designed to provide protection in the event of a collision with another vehicle, the road, birds or any other objects. When riding a motorcycle both rider and passenger must always wear a safety helmet, boots, eye protection, gloves and trousers (close fitting around the knees and ankle). Although full protection is not possible, wearing correct protective clothing can reduce the risk of injury when riding.



Warning

After fitting the windscreen kit the motorcycle will exhibit new handling characteristics. Operate the motorcycle in a safe area free from traffic to gain familiarity with any new characteristics. Operation of the motorcycle when not familiar with any new handling characteristics may result in loss of motorcycle control and an accident.



Warning

Never attempt to clean or adjust the windscreen while riding the motorcycle. Removal of the rider's hands from the handlebars while riding the motorcycle will diminish the ability of the rider to maintain the control of the motorcycle. Attempting to clean or adjust the windscreen while riding the motorcycle may result in loss of control of the motorcycle and an accident.



Warning

Never ride an accessory-equipped motorcycle (including those fitted with Triumph approved windscreens and luggage systems) at speeds above 80 mph (130 km/h).

The presence of accessories such as windscreens and luggage systems will cause changes to the stability and handling of the motorcycle. Failure to allow for changes in motorcycle stability may lead to loss of control or an accident.

Remember that the 80 mph (130 km/h) limit will be reduced by the fitting of non-approved accessories, incorrect loading, worn tyres, overall motorcycle condition and poor road or weather conditions.



Warning

If after the fitment of this accessory kit, you have any doubt about the performance of any aspect of the motorcycle, contact an authorised Triumph dealer and do not ride the motorcycle until the authorised dealer has declared it fit for use. Riding a motorcycle when there is any doubt as to any aspect of the performance of the motorcycle may result in loss of control of the motorcycle leading to an accident.



Warning

This motorcycle must not be operated above the legal road speed limit except in authorised closed-course conditions.