

## Fitting Instructions:

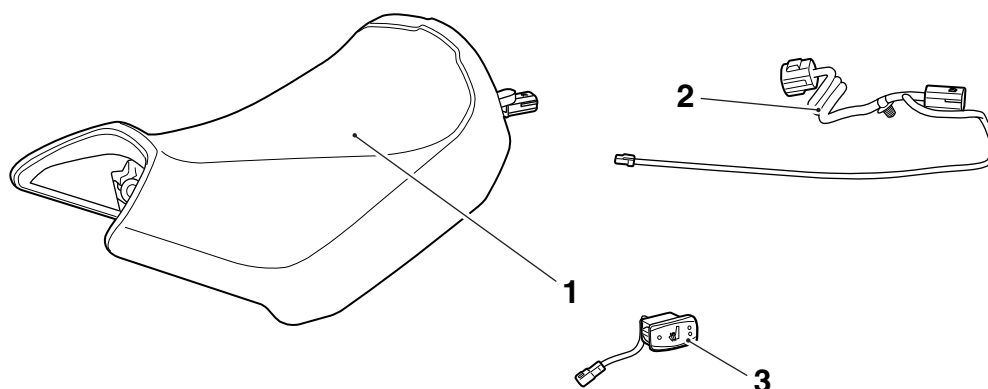
### Tiger Explorer and Tiger Explorer XC

### A9708194 and A9708198

Thank you for choosing this Triumph genuine accessory kit. This accessory kit is the product of Triumph's use of proven engineering, exhaustive testing, and continuous striving for superior reliability, safety and performance.

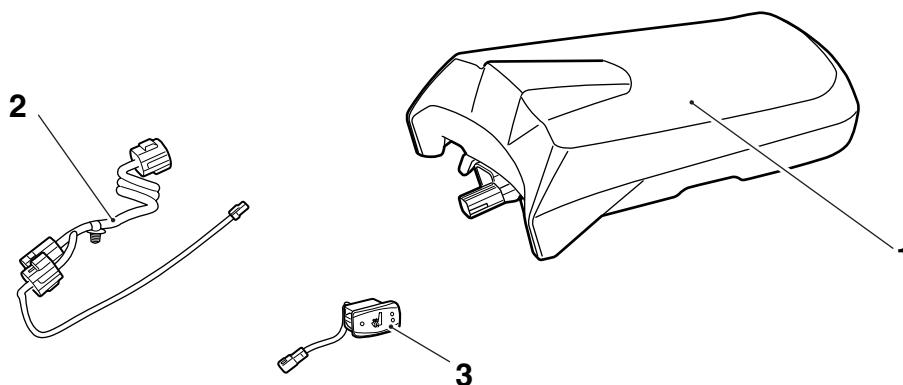
Completely read all of these instructions before commencing the installation of the accessory kit in order to become thoroughly familiar with the kit's features and the installation process.

These instructions should be considered a permanent part of your accessory kit, and should remain with it even if your accessory-equipped motorcycle is subsequently sold.



#### Parts Supplied: A9708194

1. Rider's seat, heated	1 off	3. Switch, heated seat	1 off
2. Harness, rider's seat	1 off		



#### Parts Supplied: A9708198

1. Pillion seat, heated	1 off	3. Switch, heated seat	1 off
2. Harness, pillion seat	1 off		

### **Warning**

This accessory kit is designed for use on Triumph Tiger Explorer and Tiger Explorer XC motorcycles only and should not be fitted to any other Triumph model or to any other manufacturer's motorcycle. Fitting this accessory kit to any other Triumph model or to any other manufacturer's motorcycle will affect the performance, stability and handling of the motorcycle. This may affect the rider's ability to control the motorcycle and could cause an accident.

### **Warning**

Always have Triumph approved parts, accessories and conversions fitted by a trained technician of an authorised Triumph dealer. The fitment of parts, accessories and conversions by a technician who is not of an authorised Triumph dealer may affect the handling, stability or other aspects of the motorcycle's operation, which may result in loss of motorcycle control and an accident.

### **Warning**

Throughout this operation, ensure that the motorcycle is stabilised and adequately supported on its centre stand to prevent risk of injury from the motorcycle falling.

### **Warning**

A torque wrench of known accurate calibration must be used when fitting this accessory kit. Failure to tighten any of the fasteners to the correct torque may affect motorcycle performance, handling and stability. This may result in loss of motorcycle control and an accident.

### **Warning**

Always ensure that newly installed wiring does not chafe against other parts of the motorcycle such that they may be rubbed through and cause an electrical problem. This condition is hazardous and could give rise to a dangerous riding condition resulting in a fire, loss of motorcycle control and/or an accident.

1. Place the motorcycle on its centre stand.

### **Caution**

If removing heated seats for any reason, always disconnect the heated seat harness. Do not allow the heated seats to hang freely on the sub-harness as this would result in irreparable damage to the heated seat.

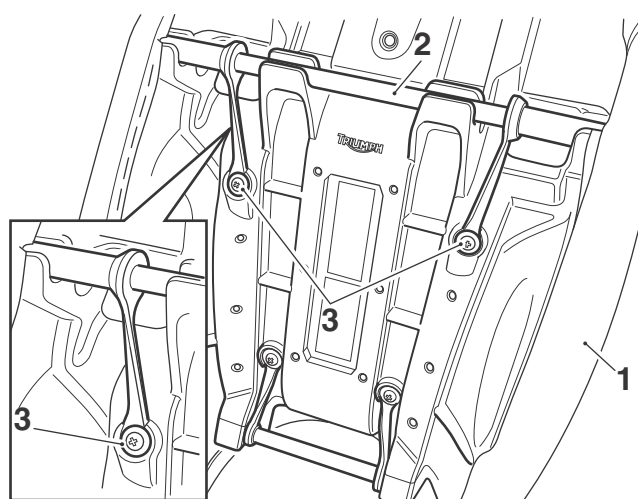
2. Remove the seats as described in the Owner's Handbook.
3. Disconnect the battery, negative (black) lead first.
4. Remove the battery as described in the Service Manual.

#### **Note:**

- **If fitting the heated rider's seat only, continue from step 1 to step 20. Then continue from Heated Seat System Testing on page 8.**
- **If fitting the heated pillion seat only, continue from Heated Pillion Seat on page 5 to step 12. Then continue from Heated Seat System Testing on page 8.**
- **If fitting the heated rider and heated pillion seat, continue from Rider and Pillion Heated Seats on page 7.**

#### **Heated Rider's Seat**

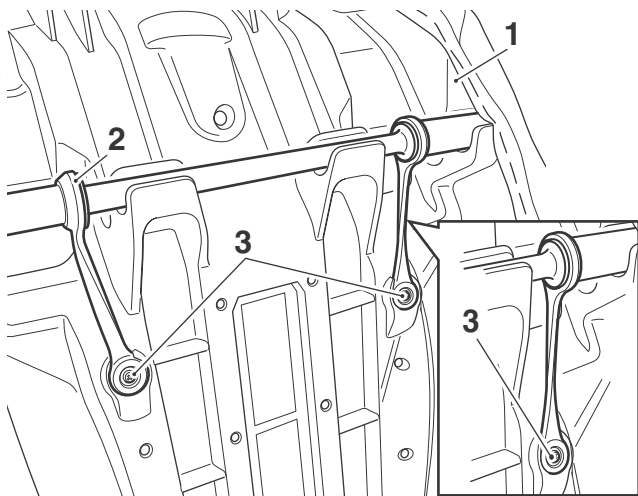
1. Noting the orientation of the rear adjuster bar rubbers, undo the fixings and remove the bar from the rider's seat.



1. Rider's seat
2. Rear adjuster bar
3. Fixings

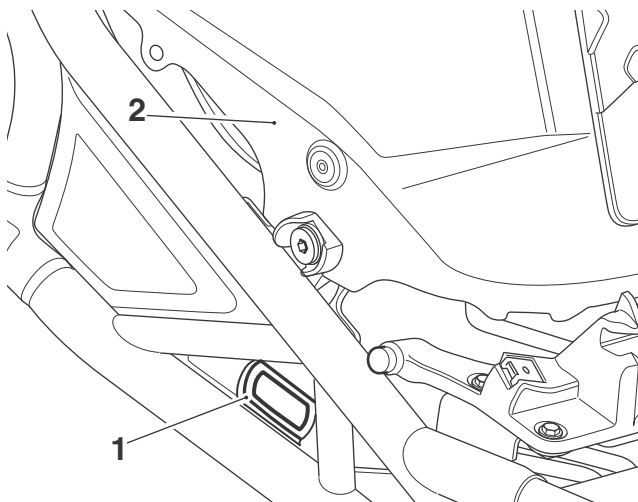
2. Recover the accessory rider's seat from the kit.
3. If fitted, remove the rear adjuster bar from the accessory rider's seat and discard.

4. Fit the rear adjuster bar to the accessory seat ensuring the adjuster bar rubber is positioned as noted during removal. Tighten the fixings to **0.5 Nm**.



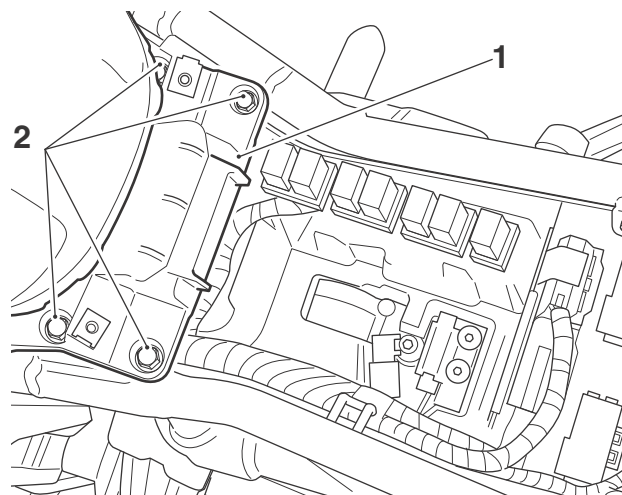
1. Accessory rider's seat
2. Rear adjuster bar
3. Fixings

5. Remove the left and right hand fuel tank infill panels as described in the Service Manual.
6. Remove the front heated seat switch blanking plug. Retain the blanking plug if the motorcycle is to be returned to its original condition.



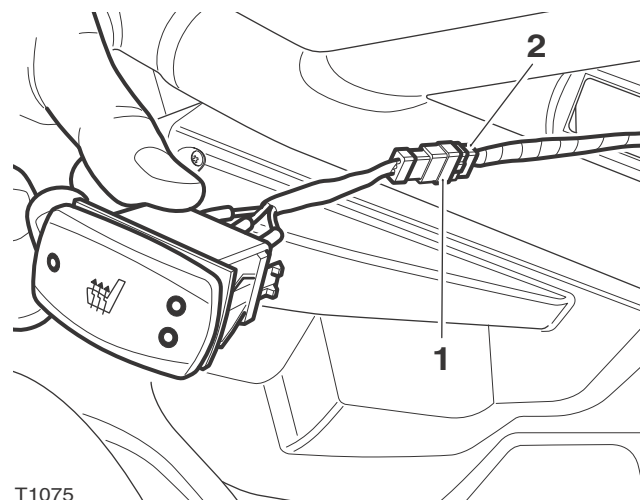
1. Switch blanking plug
2. Fuel tank

7. Remove the four fixings and remove the seat bridge.



1. Seat bridge
2. Fixings

8. Recover the sub-harness and switch from the kit. Following the main harness, route the sub-harness so the connector passes through the aperture and connect the switch.

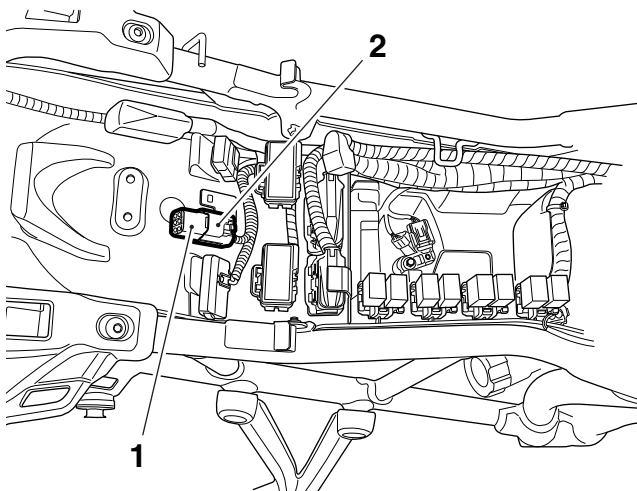


T1075

1. Switch connector
2. Connector (sub-harness)

9. Fit the switch into the aperture, making sure the locking pegs are located fully.

10. Remove the blanking plug from the main harness connector. Retain the blanking plug if the motorcycle is to be returned to its original condition.



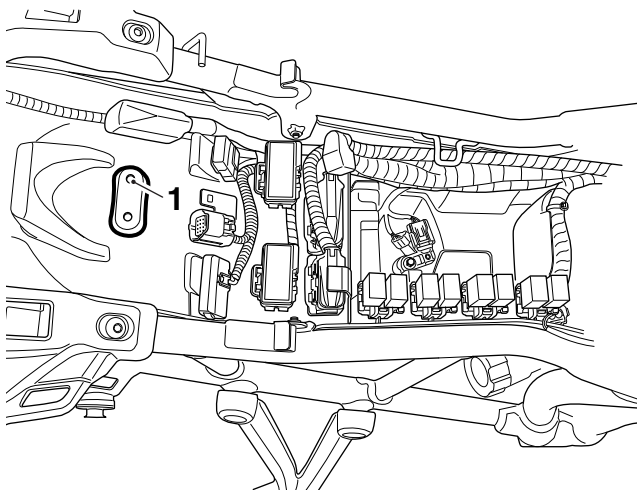
1. Blanking plug  
2. Connector (main harness)



### Caution

Only drill through the hard plastic base of the mudguard. Take care not to drill into any part of the rear tyre as this would result in irreparable damage to the rear tyre.

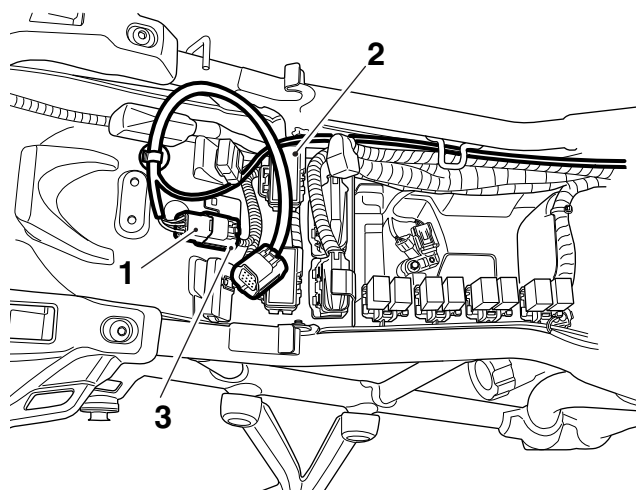
11. Carefully drill a hole into the left hand location indent in the mudguard using a 6.5 mm drill.



1. Location indent (left hand)

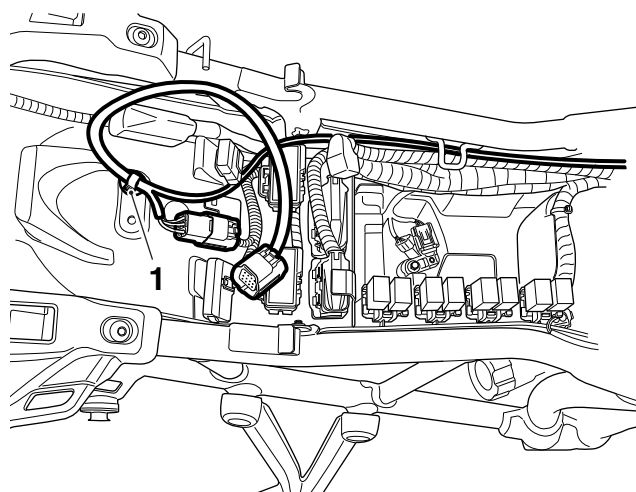
12. Following the main harness, route the sub-harness to the left of the left hand fuse box.

13. Connect the sub-harness to the main harness.



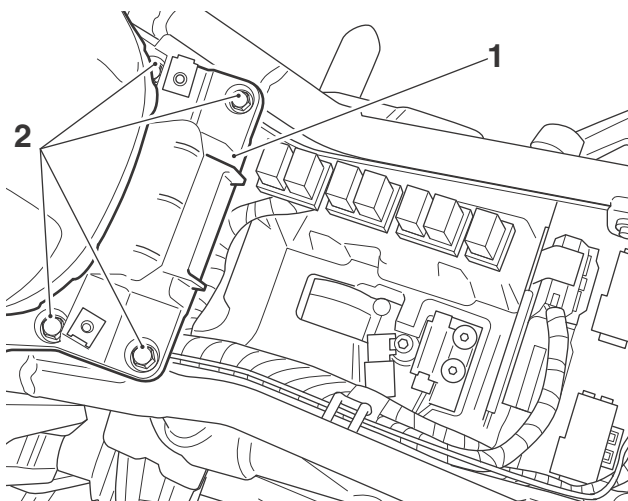
1. Connector (sub-harness)  
2. Fuse box (left hand)  
3. Connector (main harness)

14. Secure the sub-harness to the mudguard with the fir tree clip.



1. Fir tree clip

15. Refit the seat bridge to the frame with the four fixings removed earlier and tighten to **15 Nm**.



**1. Seat bridge**

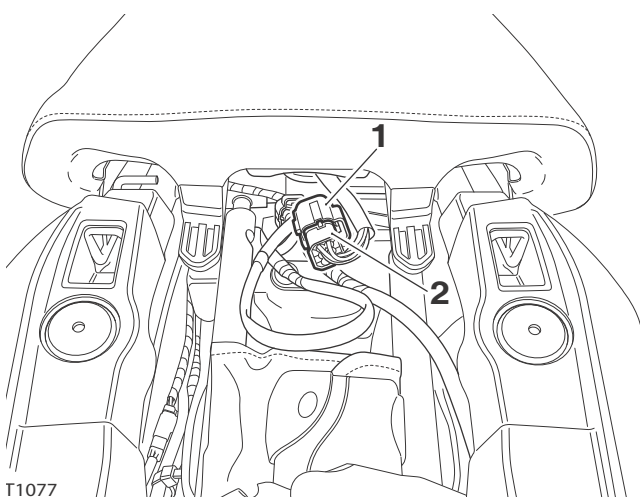
**2. Fixings**

16. Refit the left and right hand fuel tank infill panels as described in the Service Manual.
17. Install and connect the battery, positive (red) lead first.
18. Fit the rider's heated seat as described in the Owner's Handbook. Ensure that the harness for the heated seat does not become trapped between the seat and the frame.

**Note:**

- **The sub-harness used in conjunction with the heated rider's seat is identified by a band of red tape.**

19. Connect the rider's seat to the sub-harness, as shown below.



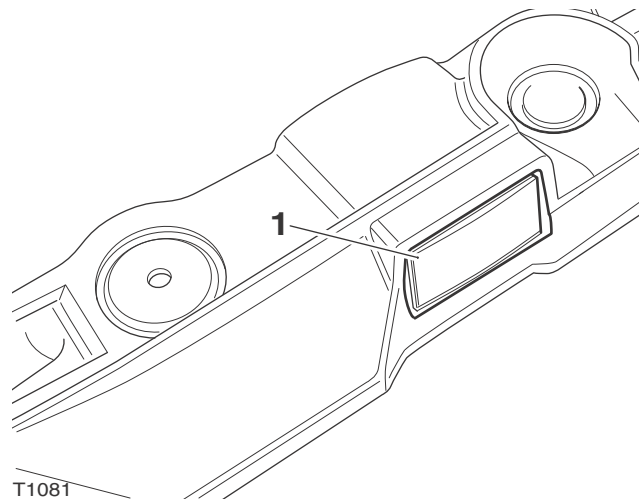
**1. Seat connector**

**2. Sub-harness connector**

20. Refit the pillion seat as described in the Owner's Handbook.

## Heated Pillion Seat

1. Remove the tail panel as described in the Service Manual.
2. Remove the rear heated seat switch blanking plug. Retain the blanking plug if the motorcycle is to be returned to its original condition.



T1081

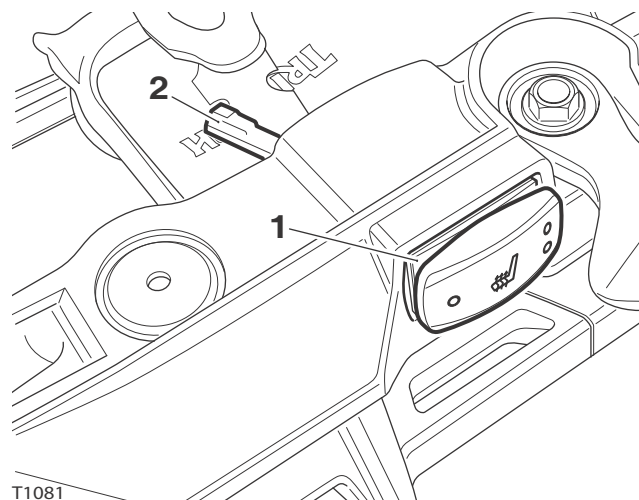
**1. Blanking plug**

3. Fit the switch into the aperture, making sure the locking pegs are located fully.

**Note:**

- **Position the switch connector between the frame and the tail panel.**

4. Refit the tail panel as described in the Service Manual.



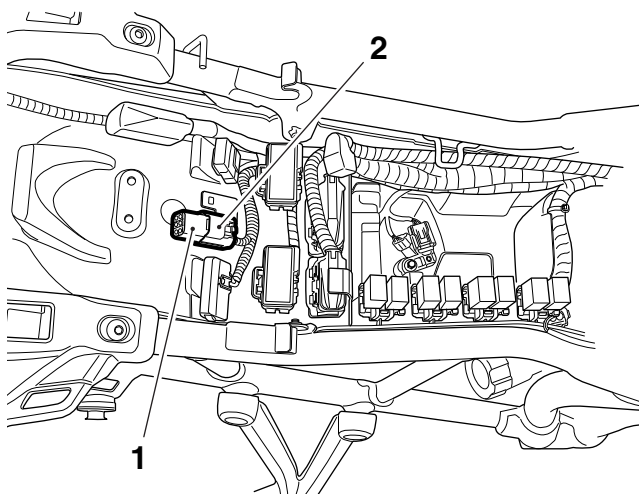
T1081

**1. Switch (tail panel installed)**

**2. Switch connector**



5. Remove the blanking plug from the main harness connector. Retain the blanking plug for re-use.



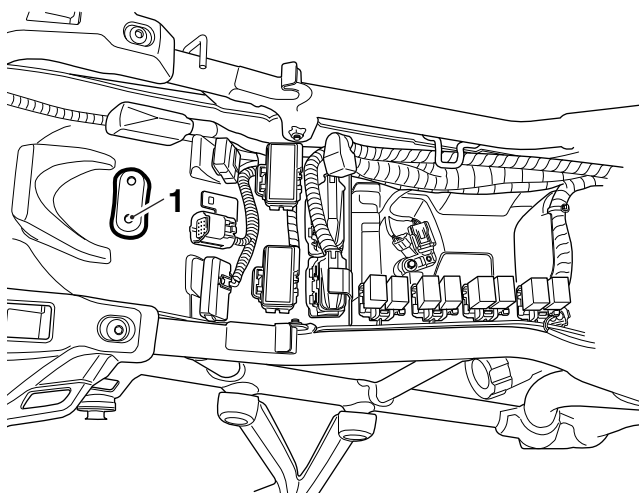
1. Blanking plug
2. Connector



### Caution

Only drill through the hard plastic base of the mudguard. Take care not to drill into any part of the rear tyre as this would result in irreparable damage to the rear tyre.

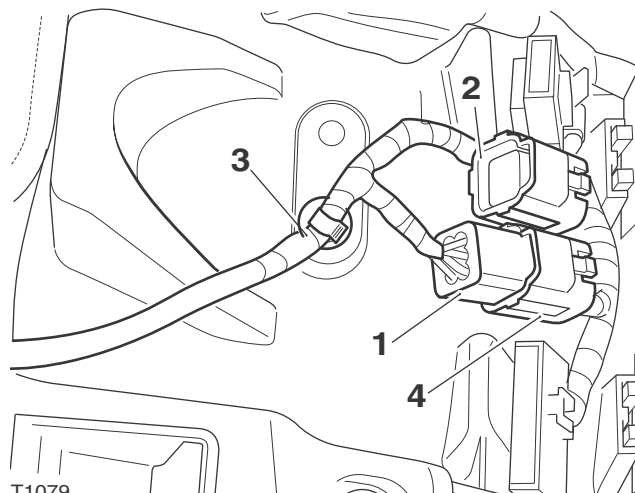
6. Carefully drill a hole into the right hand location indent in the mudguard using a 6.5 mm drill.



1. Location indent (right hand)

7. Connect the sub-harness to the main harness as described below.
  - Clip the female connector (2) to the mudguard;
  - Connect the pillion seat male connector (1) to the main harness connector (4);

- Secure the pillion seat sub-harness to the pre-drilled hole in the mudguard with the fir tree clip (3).

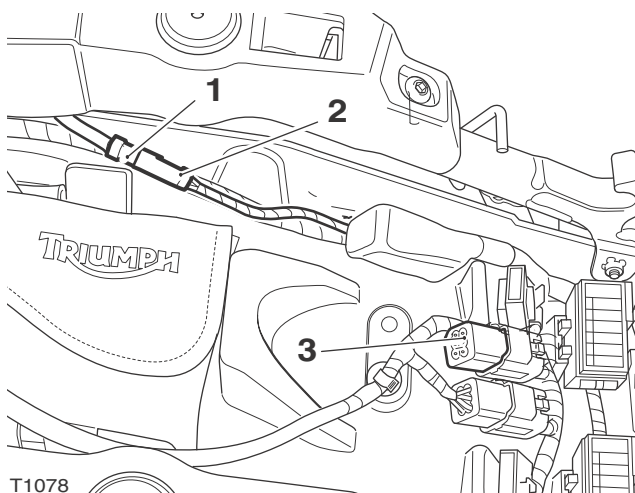


T1079

1. Male connector (sub-harness)
2. Female connector (sub-harness)
3. Fir tree clip
4. Female connector (main harness)

### Note:

- If the rider's heated seat is not fitted, the blanking plug removed earlier must be fitted to the female connector of the sub-harness.
8. Fit the blanking plug to the female connector of the sub-harness.
  9. Route the sub-harness to the right of the main fuse holder. Following the main harness, connect it to the switch connector.



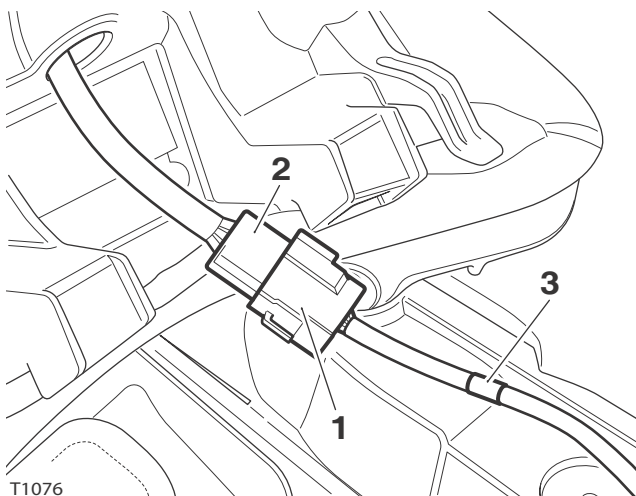
T1078

1. Connector, heated seat switch
2. Connector, sub-harness
3. Blanking plug

### Note:

- The sub-harness used in conjunction with the heated pillion seat is identified by a band of blue tape.

10. Connect the pillion seat to the sub-harness, as shown below.

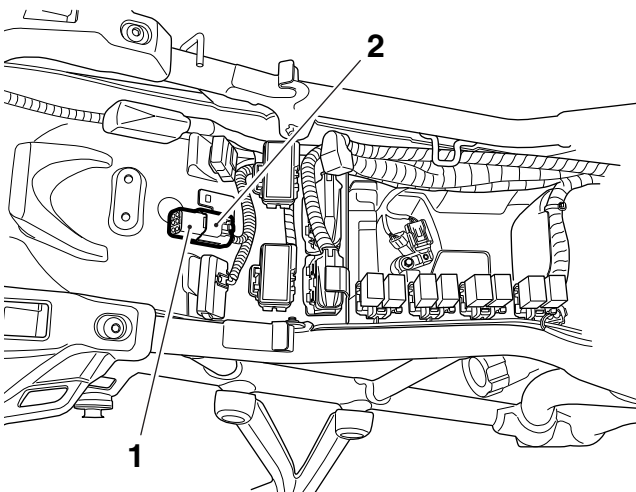


1. Connector, sub-harness
2. Connector, pillion seat
3. Blue tape

11. Install and connect the battery, positive (red) lead first.
12. Refit the seats as described in the Owner's Handbook. Ensure that the harness for the heated seat does not become trapped between the seat and the frame.

### Rider and Pillion Heated Seats

1. Remove the blanking plug from the main harness connector. Retain the blanking plug for re-use if the motorcycle is to be returned to its original condition.

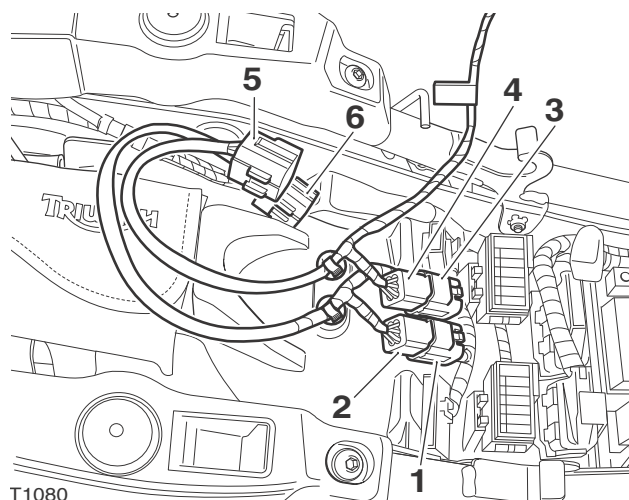


1. Blanking plug
2. Connector

2. Recover the rider and pillion seat sub-harnesses and switches from the kit and install as described for Heated Rider's Seat and Heated Pillion Seat.

3. Connect the sub-harnesses for the rider and pillion heated seats as described below.

- Connect the pillion seat male sub-harness connector (2) to the main harness connector (1);
- Clip the pillion seat female connector (3) to the mudguard;
- Connect the rider's seat male connector (4) to the sub-harness connector (3);
- Secure the rider's seat sub-harness to the left hand hole drilled previously with the fir tree clip;
- Secure the pillion seat sub-harness to the right hand hole drilled previously with the fir tree clip.



1. Main harness connector
2. Male connector sub-harness (pillion seat)
3. Female connector sub-harness (pillion seat)
4. Male connector sub-harness (rider's seat)
5. Sub-harness connector (rider's seat)
6. Sub-harness connector (pillion seat)



### Caution

When removing the seats for any reason always disconnect the heated seat harness. Do not allow the heated seats to hang freely on the sub-harness as this would result in irreparable damage to the heated seat.

4. Connect the rider's seat to the sub-harness as described previously.
5. Connect the pillion seat to the sub-harness as described previously.
6. Refit the seats as described in the Owner's Handbook. Ensure that the harnesses for the heated seats do not get trapped between the seat and the frame.

## Heated Seat System Testing

1. Run the engine to avoid draining the battery.
2. Operate the switch at both positions and check that the heated seat/s warm up.
3. Fuse number 4 of the right hand fuse box protects the heated seat circuit. Refer to the label in the fuse box lid for fuse amperage.

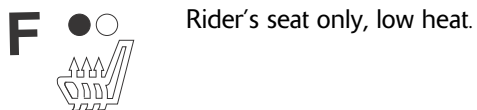
## Operation

1. The heated seat switch has three operating modes as described below:
  - OFF - central position;
  - HIGH - two dots (rocker switch depressed);
  - LOW - one dot (rocker switch depressed).

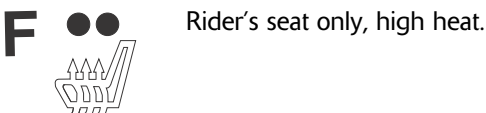
The system is designed to offer a variable level of heat at the seats from low to high.

Both the rider and pillion heated seat has OFF, LOW and HIGH settings. The heated seats symbol in the instruments will show which seats are on but will only display the heat setting selected for the rider's seat.

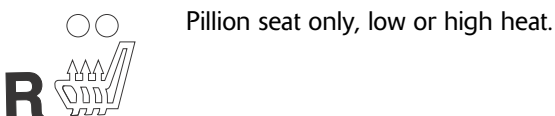
When the heated seats are on, the symbol in the instruments will illuminate as shown below.



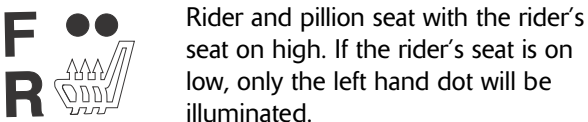
Rider's seat only, low heat.



Rider's seat only, high heat.



Pillion seat only, low or high heat.



Rider and pillion seat with the rider's seat on high. If the rider's seat is on low, only the left hand dot will be illuminated.

To turn on the heated seat for high press the end of the relevant rocker switch that has two dots.

To turn on the heated seat for low press the end of the relevant rocker switch that has one dot.

To turn the heated seat off, press the relevant rocker switch so that it is in the central position.



### Warning

If, after fitment of this accessory kit, you have any doubt about the performance of any aspect of the motorcycle, contact an authorised Triumph dealer and do not ride the motorcycle until the authorised dealer has declared it fit for use. Riding a motorcycle when there is any doubt as to any aspect of the performance of the motorcycle may result in loss of control of the motorcycle leading to an accident.



### Warning

The motorcycle must not be operated above the legal road speed limit except in closed-course conditions.



### Warning

Only operate this Triumph motorcycle at high speed in closed-course on road competition or on closed-course racetracks. High speed operation should only be attempted by riders who have been instructed in the techniques necessary for high speed riding and are familiar with the motorcycle's characteristics in all conditions.

High speed operation in any other circumstances is dangerous and will lead to loss of motorcycle control and an accident.