

Fitting Instructions: Street Triple Radiator Cowl Kit - A9708139

Thank you for choosing this Triumph genuine accessory kit. This accessory kit is the product of Triumph's use of proven engineering, exhaustive testing, and continuous striving for superior reliability, safety and performance.

Completely read all of these instructions before commencing the installation of the accessory kit in order to become thoroughly familiar with the kit's features and the installation process.

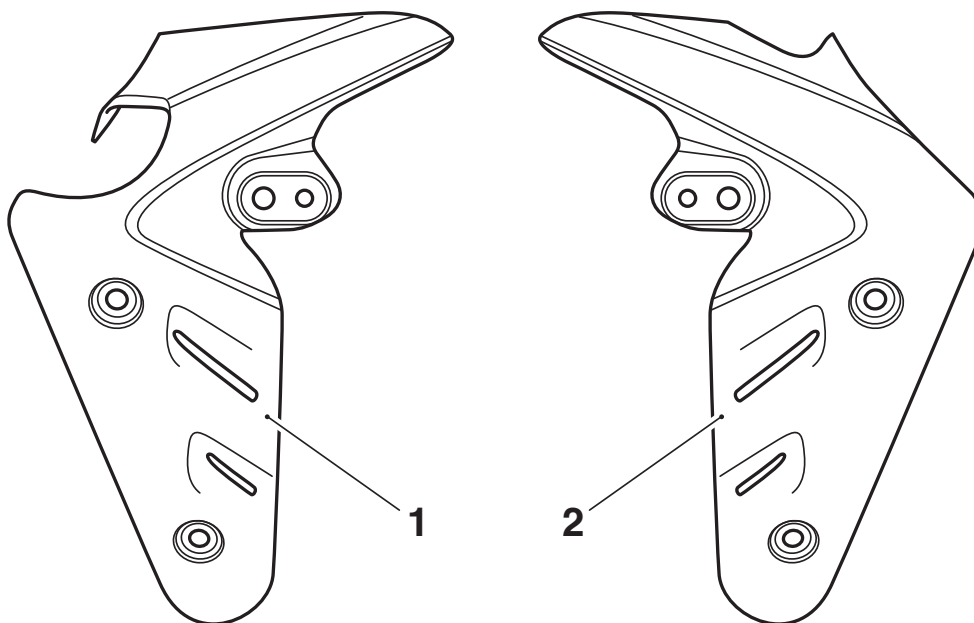
These instructions should be considered a permanent part of your accessory kit, and should remain with it even if your accessory equipped motorcycle is subsequently sold.

Warning

This accessory kit is designed for use on Triumph Street Triple motorcycles only and should not be fitted to any other Triumph model or to any other manufacturers motorcycle. Fitting this accessory kit to any other Triumph model, or to any other manufacturers motorcycle, may interfere with the rider and could affect the handling, stability or other aspects of the motorcycles operation which may result in loss of motorcycle control and an accident.

Warning

Always have Triumph approved parts, accessories and conversions fitted by a trained technician of an authorised Triumph dealer. The fitment of parts, accessories and conversions by a technician who is not of an authorised Triumph dealer may affect the handling, stability or other aspects of the motorcycles operation which may result in loss of motorcycle control and an accident.



Parts Supplied:

- 1. Radiator cowl, LH 1 off
- 2. Radiator cowl, RH 1 off

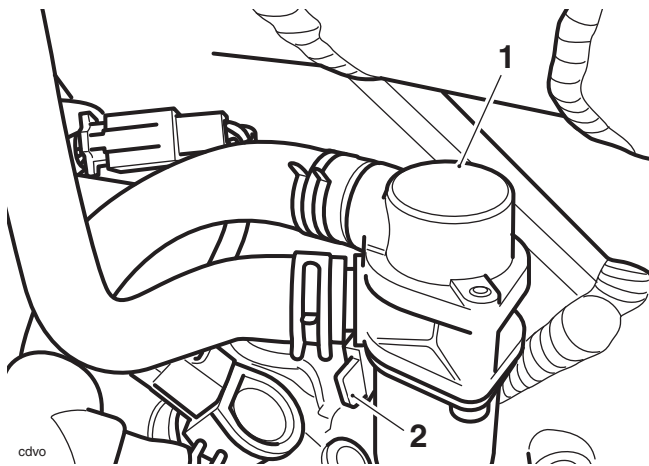
Warning

Throughout this operation, ensure that the motorcycle is stabilised and adequately supported on a paddock stand to prevent risk of injury from the motorcycle falling.

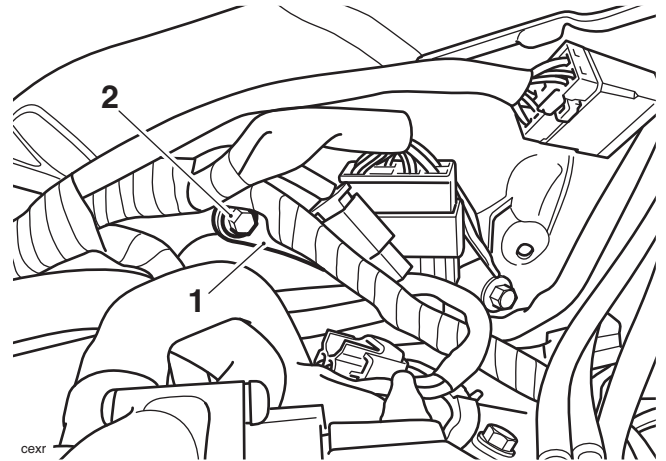
Warning

A torque wrench of known accurate calibration must be used when fitting this accessory kit. Failure to tighten any of the fasteners to the correct torque specification may result in loss of motorcycle control and an accident.

1. Remove the seat and disconnect the battery, negative (black) lead first.
2. Remove the fuel tank as described in the service manual.
3. Remove the airbox as described in the service manual.
4. Remove the front direction indicators as described in the service manual.
5. Detach the secondary air injection solenoid valve from its retainer on the frame infill panel, and position aside.
6. Release the fixing and remove the left hand radiator cowl bracket from the frame. Retain the bracket and fixing if the motorcycle is to be returned to its original condition.



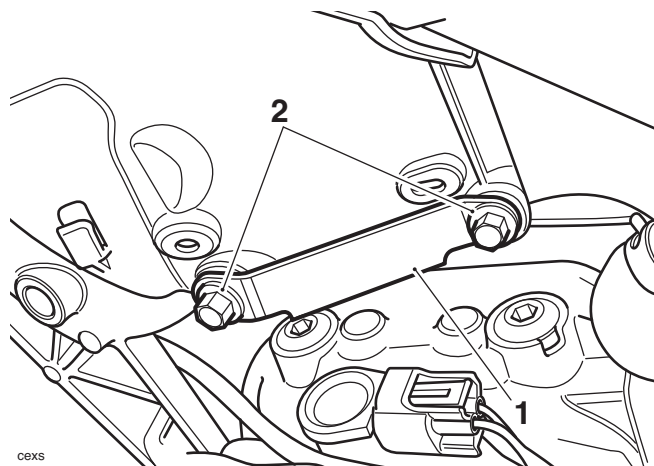
1. Secondary air injection solenoid valve
2. Retainer



1. Left hand radiator cowl bracket
2. Fixing

7. Refit the secondary air injection solenoid valve to its retainer on the frame infill panel.

8. Release the two fixings and remove the right hand radiator cowl bracket from the frame. If fitted, collect the spacer from under the bracket.



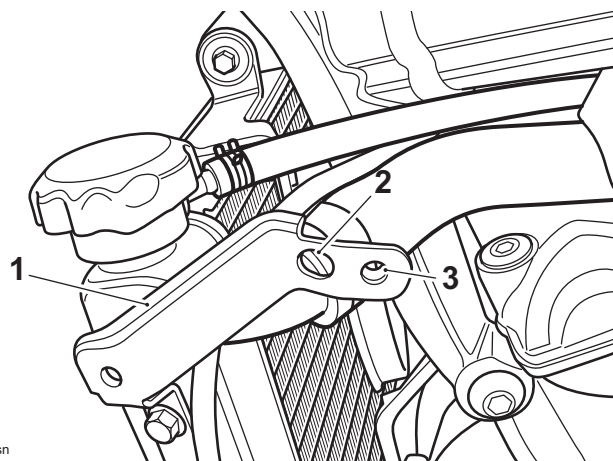
1. Right hand radiator cowl bracket

2. Fixing

9. Refit the two fixings to retain the frame infill panel to the frame. Tighten to **4 Nm**. Retain the bracket (and the spacer if one was removed) if the motorcycle is to be returned to its original condition.
10. Install both accessory radiator cowls as follows:
11. Pass the direction indicator harness through the accessory radiator cowl and position the direction indicator to the radiator cowl.
12. Pass the direction indicator harness through the radiator bracket and align the radiator cowl to its fixing holes.

NOTE

- Ensure the direction indicator harness passes through the hole in the radiator bracket and is not trapped by the radiator cowl as it is installed.



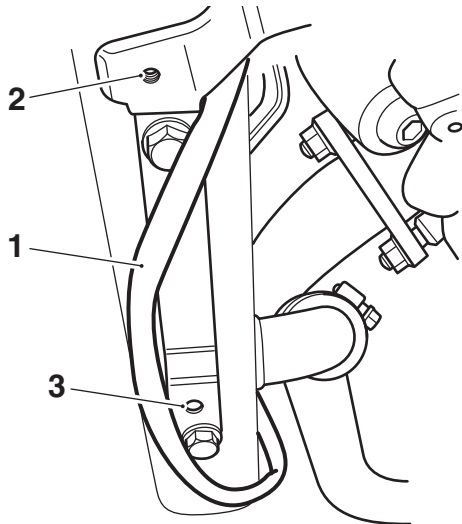
1. Radiator bracket (left hand shown)

2. Direction indicator harness hole

3. Direction indicator fixing hole

13. Route the direction indicator harness inside the frame rail to a position above the camshaft cover, following the routing noted during removal. Reconnect the electrical connectors to the main harness.

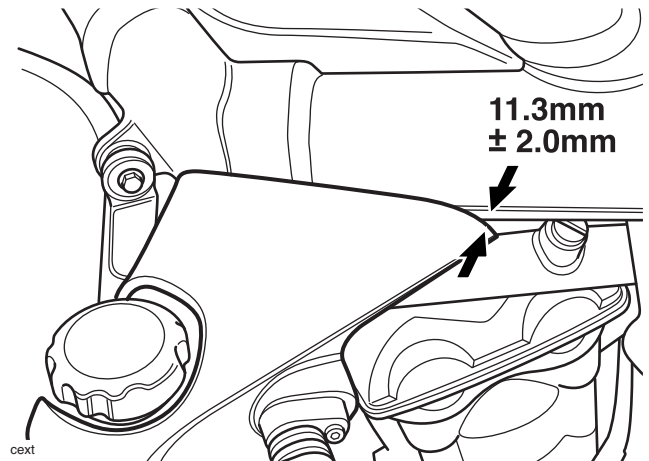
14. **Left hand radiator cowl only:** Ensure the horn wiring harness is routed to the **rear** of the upper radiator cowl mounting on the radiator, and to the **front** of the lower radiator cowl mounting, as shown below. Ensure the harness is not trapped at any position by the radiator cowl as it is installed.



- 1. Horn wiring harness routing
- 2. Upper radiator cowl mounting
- 3. Lower radiator cowl mounting

15. **Both sides:** Install the two radiator cowl fixings and the direction indicator fixing and tighten as follows:
16. Tighten the radiator cowl fixings to **5 Nm.**
17. Tighten the direction indicator fixing to **4 Nm.**

18. Check the clearance between the rear edge of both radiator cowls and the frame is $11.3 \text{ mm} \pm 2 \text{ mm}$, as shown below. If the clearance is incorrect, carefully bend the direction indicator fixing bracket inwards or outwards as necessary to achieve the correct clearance.



Radiator cowl to frame clearance (left hand shown)

19. Refit the airbox as described in the service manual.
20. Refit the fuel tank as described in the service manual.
21. Reconnect the battery, positive (red) lead first.
22. Refit the seat.

 **Warning**

After fitting the accessory kit the motorcycle will exhibit new handling characteristics. Operate the motorcycle in a safe area free from traffic to gain familiarity with any new characteristics. Operation of the motorcycle when not familiar with any new handling characteristics may result in loss of motorcycle control and an accident.

 **Warning**

If, after fitment of this accessory kit, you have any doubt about the performance of any aspect of the motorcycle, contact an authorised Triumph dealer and do not ride the motorcycle until the authorised dealer has declared it fit for use. Riding a motorcycle when there is any doubt as to any aspect of the performance of the motorcycle may result in loss of control of the motorcycle leading to an accident.

 **Warning**

Never ride an accessory equipped motorcycle at speeds above 80 mph (130 km/h). The presence of accessories will cause changes in the stability and handling of the motorcycle. Failure to allow for changes in motorcycle stability may lead to loss of control or an accident. Remember that the 80 mph (130km/h) limit will be reduced by the fitting of non-approved accessories, incorrect loading, worn tyres, overall motorcycle condition and poor road or weather conditions.

 **Warning**

The motorcycle must not be operated above the legal road speed limit except in closed course conditions.

 **Warning**

Only operate this Triumph motorcycle at high speed in closed course on road competition or on closed course racetracks. High speed operation should only be attempted by riders who have been instructed in the techniques necessary for high speed riding and are familiar with the motorcycle's characteristics in all conditions. High speed operation in any other circumstances is dangerous and will lead to loss of motorcycle control and an accident.