



Accessory Fitting Instructions

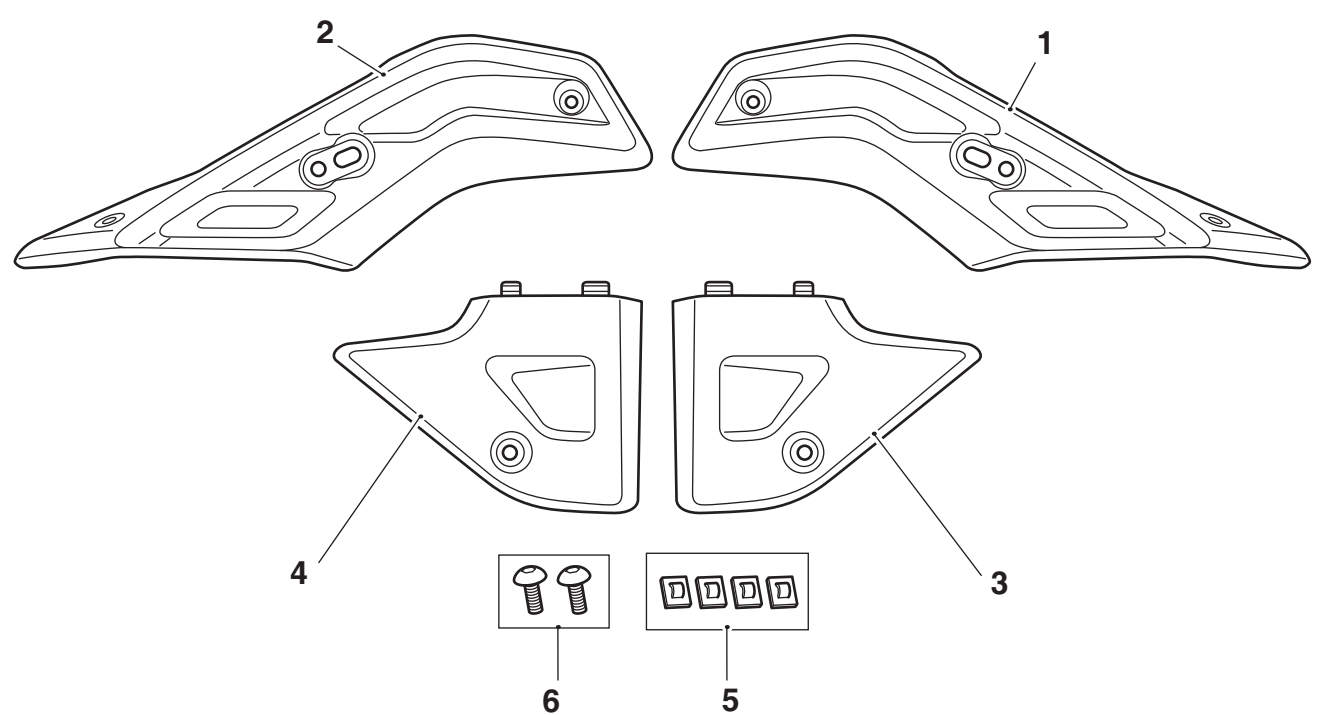
Brushed Finisher Kit	
Kit Number	Models Affected
A9702005	Tiger 900, Tiger 900 GT, Tiger 900 GT Pro, Tiger 900 GT (LRH), Tiger 900 Rally, Tiger 850 Sport

Thank you for choosing this Triumph genuine accessory kit. This accessory kit is the product of Triumph's use of proven engineering, exhaustive testing, and continuous striving for superior reliability, safety and performance.

Completely read all of these instructions before commencing the installation of the accessory kit in order to become thoroughly familiar with the kit's features and the installation process.

These instructions should be considered a permanent part of your accessory kit, and should remain with it even if your accessory equipped motorcycle is subsequently sold.

Parts Supplied:



1. Cockpit side panel, left hand	1 off	5. Cable guide	4 off
2. Cockpit side panel, right hand	1 off	6. Fixing, M5 x 16 mm Shouldered	2 off
3. Radiator cowl finisher, left hand	1 off	7. Cleaning wipe (not shown)	2 off
4. Radiator cowl finisher, right hand	1 off		



Warning

Fit only genuine Triumph accessories to those models approved by Triumph as listed in the associated Triumph fitting instructions. The accessory kits covered in this instruction are designed for use on specific models of Triumph motorcycle. The accessory kits and the models applicable are listed at the start of the instruction. They should never be fitted to any other Triumph model or to any other manufacturer's motorcycle. Fitting an accessory kit to a Triumph model not listed, or to any other manufacturer's motorcycle will affect the performance, stability and handling of the motorcycle. This may affect the rider's ability to control the motorcycle and could result in an accident causing severe injuries or death.



Warning

Always have Triumph approved parts, accessories and conversions fitted by a trained technician of an authorised Triumph dealer. The fitment of parts, accessories and conversions by a technician who is not of an authorised Triumph dealer may affect the handling, stability or other aspects of the motorcycle's operation which may result in loss of motorcycle control and an accident.



Warning

Throughout this operation, ensure that the motorcycle is stabilised and adequately supported to prevent risk of injury from the motorcycle falling.



Warning

A torque wrench of known accurate calibration must be used when fitting this accessory kit. Failure to tighten any of the fasteners to the correct torque specification may affect motorcycle performance, handling and stability. This may result in loss of motorcycle control and an accident.

Note:

- Triumph offers a broad range of approved genuine accessories for your motorcycle. We cannot therefore cover all possible equipment variations in these instructions. For removal and installation of Triumph Genuine Accessories, always refer to the instructions supplied with the respective accessory kit. To obtain additional copies of any Triumph accessory instructions, visit www.triumphinstructions.com or contact your authorised Triumph dealer.

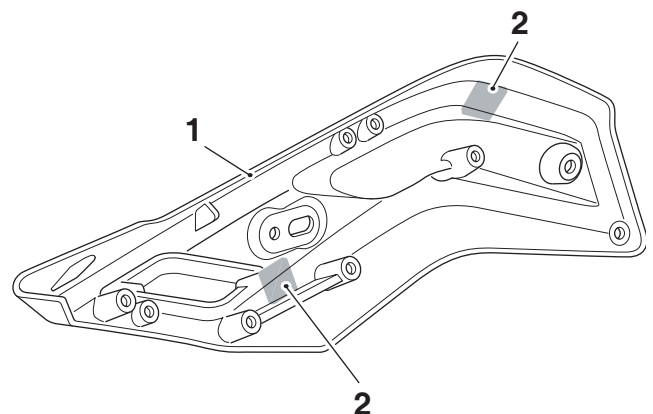
- Remove the rider and passenger seats as described in the Service Manual.
- Disconnect the battery as described in the Service Manual.

Fitting the Cockpit Side Panels

- Remove the left hand front direction indicator and left hand cockpit side panel as described in the Service Manual. Retain the fixings and direction indicator for reuse. Retain the cockpit side panel if the motorcycle is to be returned to its original condition.
- Collect the left hand cockpit side panel and a cleaning wipe from the kit.

Note:

- Read the warning notices printed on the cleaning wipe packet.
 - The surface to which the cable guides are affixed must be clean and dry to ensure that the adhesive has a sound base to adhere to. Use the cleaning wipe supplied for this purpose.
- Using the cleaning wipe provided, clean the areas highlighted below on the left hand cockpit side panel.



- Cockpit side panel, left hand
- Cleaning areas

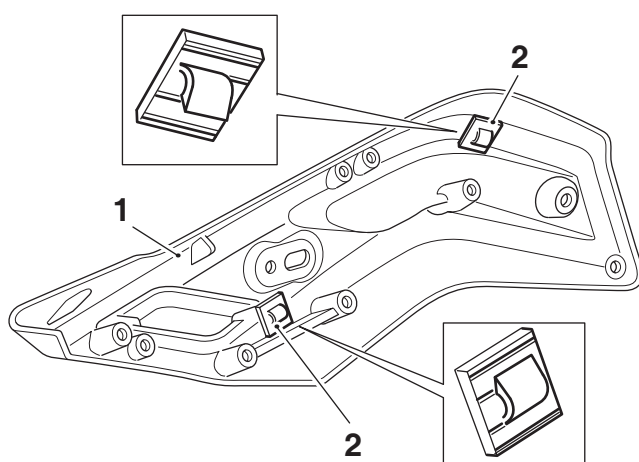
6. Collect two of the cable guides from the kit.



Caution

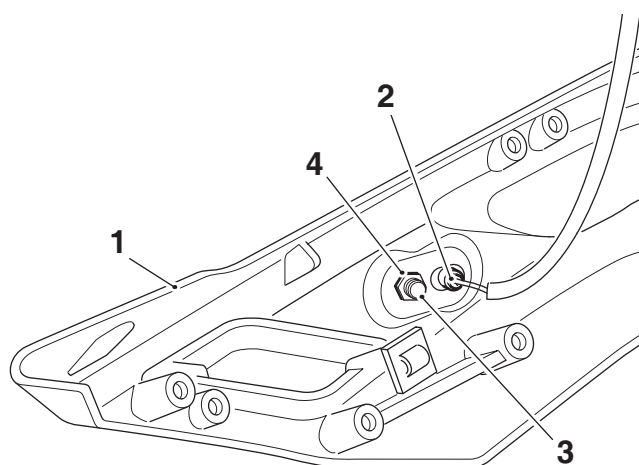
When fitting self-adhesive parts care must be taken to ensure positioning is correct and accurate. Once the adhesive has been attached to the mounting surface, there is no satisfactory method of removal or re-positioning if incorrectly aligned. Initial bonding is instant, full bonding is achieved after 72 hours.

7. Peel away the adhesive backing strips from the cable guides and attach them to the left hand cockpit side panel in the locations and orientation shown. Apply firm and even pressure to ensure a good bond is achieved.



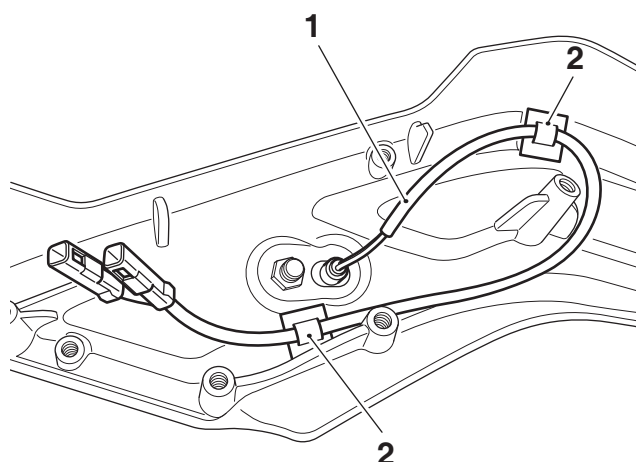
1. Cockpit side panel, left hand
2. Cable guides

8. Refit the left hand direction indicator to the cockpit side panel with the original fixings. Whilst holding the lock nut in place, tighten the fixing to **3 Nm**.



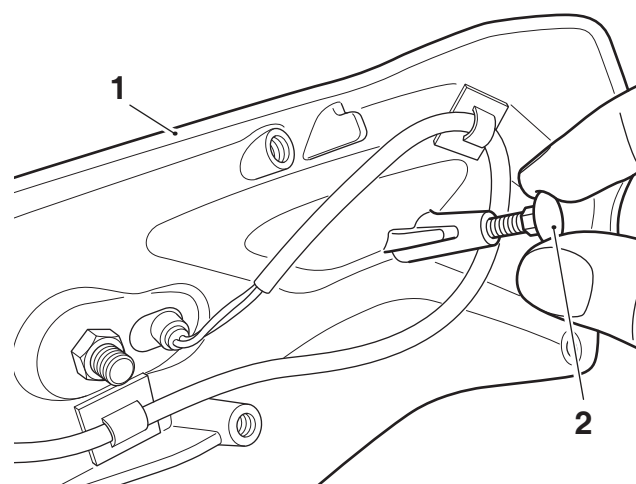
1. Cockpit side panel, left hand
2. Indicator, left hand
3. Fixing
4. Lock nut

9. Route the indicator harness through the cable guides, as shown below.



1. Indicator harness
2. Cable guides

10. Collect a shouldered fixing from the kit and fit into the left hand cockpit side panel, as shown. Tighten the fixing to **3 Nm**.



1. Cockpit side panel, left hand
2. Shouldered fixing

11. Fit the left hand cockpit side panel and reconnect the left hand indicator harness as described in the Service Manual.
12. Repeat steps 3 to 11 for the right hand side.

Fitting the Radiator Cowl Finishers

Note:

- **The accessory radiator cowl finishers are fitted in the same way as the original radiator cowl finishers.**
13. Remove the original radiator cowl finishers as described in the Service Manual. Retain the radiator cowl finishers for reuse if the motorcycle is to be returned to its original condition.
 14. Collect the radiator cowl finishers from the kit.
 15. Fit the radiator cowl finishers as described in the Service Manual.
 16. Reconnect the battery as described in the Service Manual.
 17. Refit the rider and passenger seats as described in the Service Manual.

Note:

- **Aluminium items not lacquered or painted within this kit must be correctly cleaned to preserve their appearance. Use a proprietary brand of aluminium cleaner which does not contain abrasive or caustic elements.**
- **Clean aluminium items regularly, in particular after use in inclement weather, where the components must be hand washed and dried each time the machine is used.**
- **Warranty claims due to inadequate maintenance will not be allowed.**



Warning

After fitting the accessory kit the motorcycle will exhibit new handling characteristics. Operate the motorcycle in a safe area free from traffic to gain familiarity with any new characteristics. Operation of the motorcycle when not familiar with any new handling characteristics may result in loss of motorcycle control and an accident.



Warning

If, after fitment of this accessory kit, you have any doubt about the performance of any aspect of the motorcycle, contact an authorised Triumph dealer and do not ride the motorcycle until the authorised dealer has declared it fit for use. Riding a motorcycle when there is any doubt as to any aspect of the performance of the motorcycle may result in loss of control of the motorcycle leading to an accident.



Warning

Never ride an accessory-equipped motorcycle at speeds above 80 mph (130 km/h).

The presence of accessories will cause changes in the stability and handling of the motorcycle. Failure to allow for changes in motorcycle stability may lead to loss of control or an accident.

Remember that the 80 mph (130 km/h) limit will be reduced by the fitting of non-approved accessories, incorrect loading, worn tyres, overall motorcycle condition and poor road or weather conditions.



Warning

The motorcycle must not be operated above the legal road speed limit except in closed-course conditions.



Warning

Only operate this Triumph motorcycle at high speed in closed-course, on-road competition or on closed-course racetracks. High-speed operation should only be attempted by riders who have been instructed in the techniques necessary for high speed riding and are familiar with the motorcycle's characteristics in all conditions.

High-speed operation in any other circumstances is dangerous and will lead to loss of motorcycle control and an accident.