



Accessory Fitting Instructions

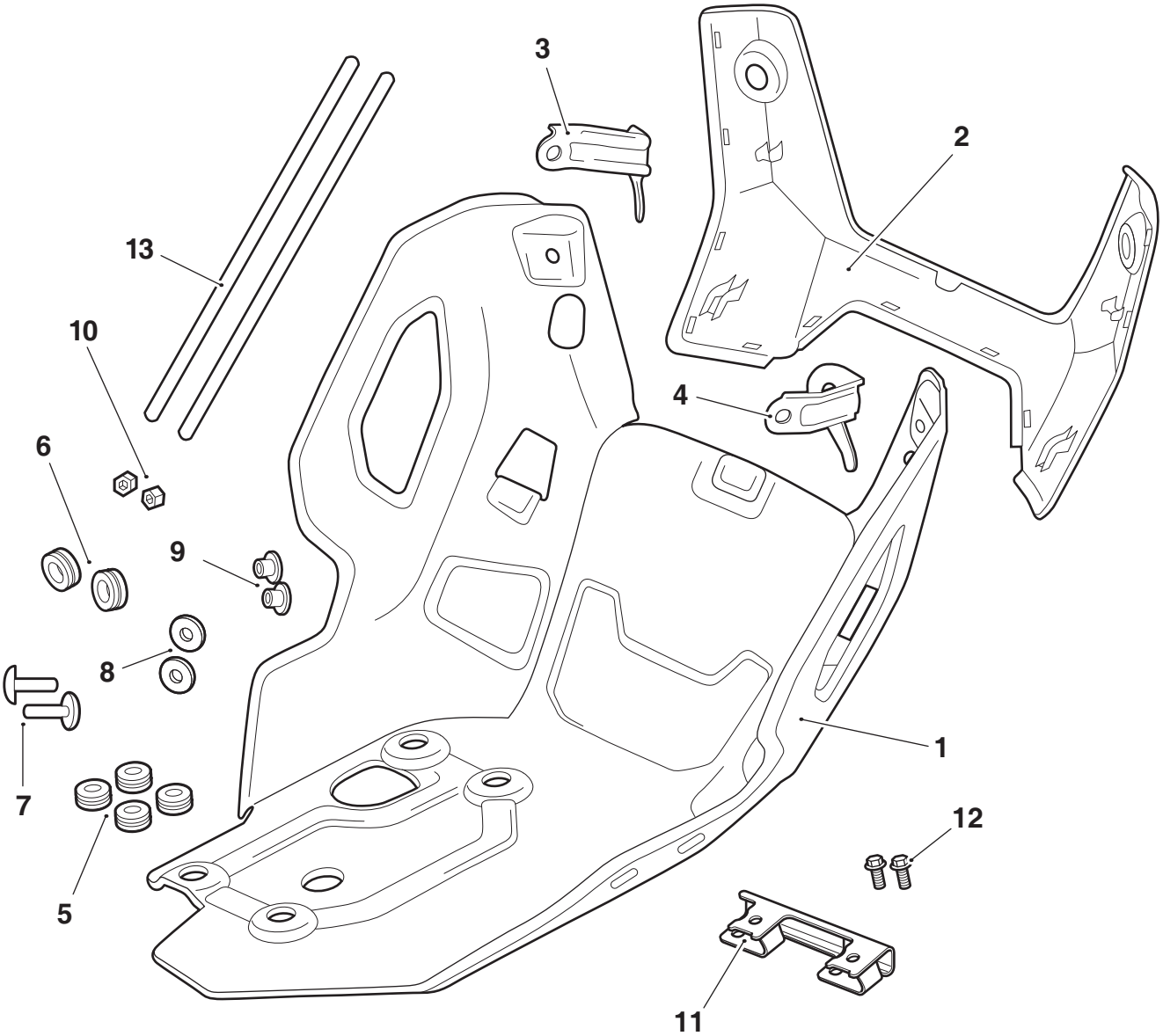
Sump Guard Kit	
Kit Number	Models Affected
A9701538	Tiger 1200 GT Explorer up to VIN BF1406
A9701556	Tiger 1200 GT Explorer from VIN BF1407

Thank you for choosing this Triumph genuine accessory kit. This accessory kit is the product of Triumph's use of proven engineering, exhaustive testing, and continuous striving for superior reliability, safety and performance.

Completely read all of these instructions before commencing the installation of the accessory kit in order to become thoroughly familiar with the kit's features and the installation process.

These instructions should be considered a permanent part of your accessory kit, and should remain with it even if your accessory equipped motorcycle is subsequently sold.

Parts Supplied: A9701538, A9701556



1. Sump guard	1 off	8. Washer, 2 mm	2 off
2. Upper panel	1 off	9. Flanged sleeve	2 off
3. Left hand upper bracket	1 off	10. Nut	2 off
4. Right hand upper bracket	1 off	11. Front bracket (A9701538 only)	1 off
5. Rubber grommet, 4 mm	4 off	12. Fixing, M6 x 16 mm (A9701538 only)	2 off
6. Rubber grommet, 1.8 mm	2 off	13. Protective rubber trim	2 off
7. Fixing, M6 x 25 mm	2 off		



Warning

Fit only genuine Triumph accessories to those models approved by Triumph as listed in the associated Triumph fitting instructions. The accessory kits covered in this instruction are designed for use on specific models of Triumph motorcycle. The accessory kits and the models applicable are listed at the start of the instruction. They should never be fitted to any other Triumph model or to any other manufacturer's motorcycle. Fitting an accessory kit to a Triumph model not listed, or to any other manufacturer's motorcycle will affect the performance, stability and handling of the motorcycle. This may affect the rider's ability to control the motorcycle and could result in an accident causing severe injuries or death.



Warning

Always have Triumph approved parts, accessories and conversions fitted by a trained technician of an authorised Triumph dealer. The fitment of parts, accessories and conversions by a technician who is not of an authorised Triumph dealer may affect the handling, stability or other aspects of the motorcycle's operation which may result in loss of motorcycle control and an accident.



Warning

Throughout this operation, make sure that the motorcycle is stabilised and adequately supported to prevent risk of injury from the motorcycle falling.



Warning

A torque wrench of known accurate calibration must be used when fitting this accessory kit. Failure to tighten any of the fasteners to the correct torque specification may affect motorcycle performance, handling and stability. This may result in loss of motorcycle control and an accident.



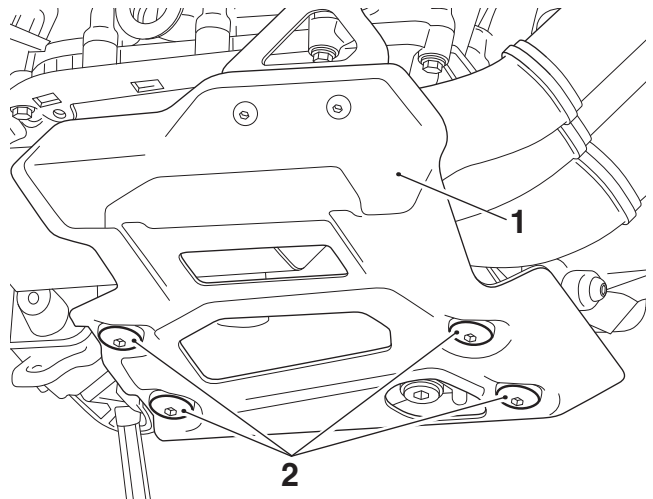
Warning

If the engine has recently been running, the exhaust system will be hot. Before working on or near the exhaust system, allow sufficient time for the system to cool, as touching any part of a hot exhaust could cause burn injuries.

Note:

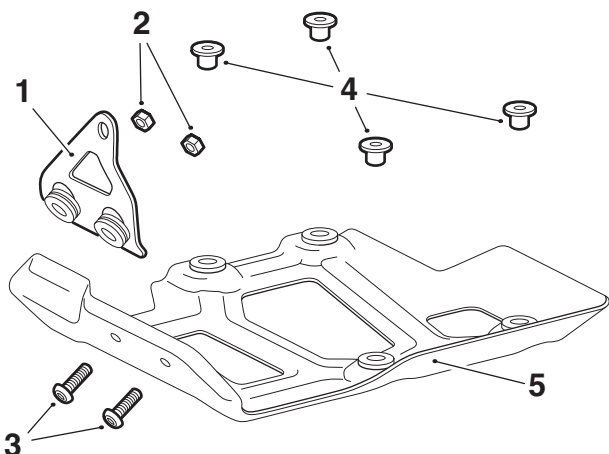
- Triumph offers a broad range of approved genuine accessories for your motorcycle. We cannot therefore cover all possible equipment variations in these instructions. For removal and installation of Triumph Genuine Accessories, always refer to the instructions supplied with the respective accessory kit. To obtain additional copies of any Triumph accessory instructions, visit www.triumphinstructions.com or contact your authorised Triumph dealer.

1. Remove the left hand and right hand lower bars as described in the Service Manual. Retain the bars and fixings for reuse.
2. Remove the skid plate from the motorcycle by removing the four M6 x 20 mm fixings from the underside of the skid plate. Retain the fixings for reuse.



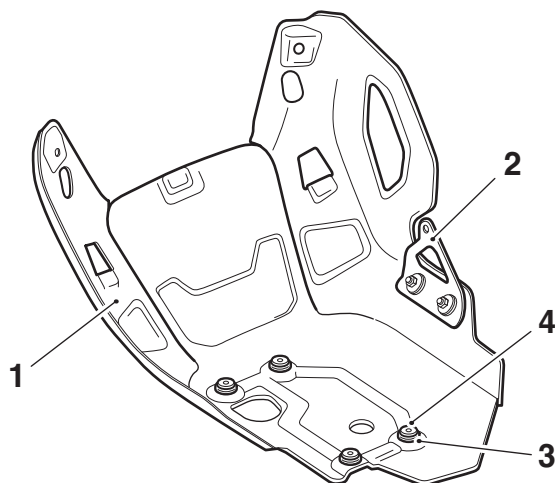
1. Skid plate
2. Fixings, M6 x 20 mm

- Remove the side mounting bracket assembly with the two rubber grommets, sleeves, M6 x 20 mm fixings and M6 nuts from the skid plate. Remove the four remaining flanged sleeves from the skid plate. Retain all of the parts for reuse. Retain the skid plate and four remaining rubber grommets if the motorcycle is to be returned to its original condition.



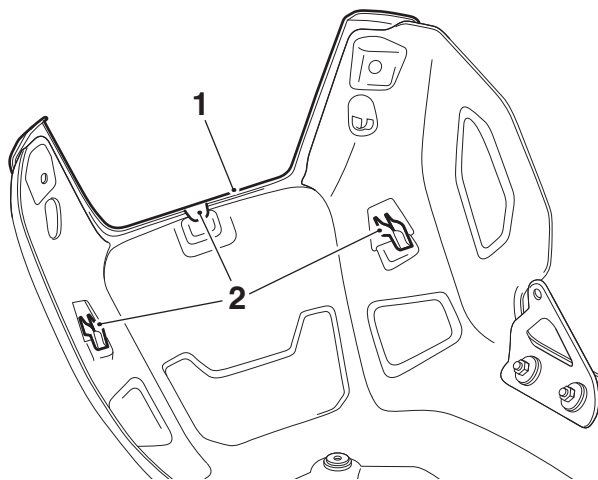
- Side mounting bracket assembly
- M6 nuts
- Fixings, M6 x 20 mm
- Flanged sleeves
- Skid plate

- Fit the side mounting bracket to the sump guard from the kit, reusing the M6 x 20 mm fixings, grommets, flanged sleeves and M6 nuts for the side bracket. Tighten the fixings to **6 Nm**.
- Fit the four 4 mm grommets from the kit, reusing four sleeves from the skid plate.



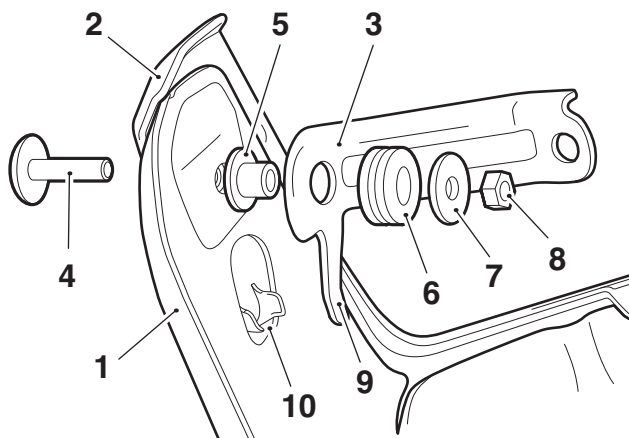
- Sump guard
- Side mounting bracket assembly
- Rubber grommets, 4 mm
- Flanged sleeves

- Take the upper panel from the kit and align it to the front of the sump guard. Make sure that the three tabs locate over the sump guard as shown.



- Upper panel
- Upper panel location tabs

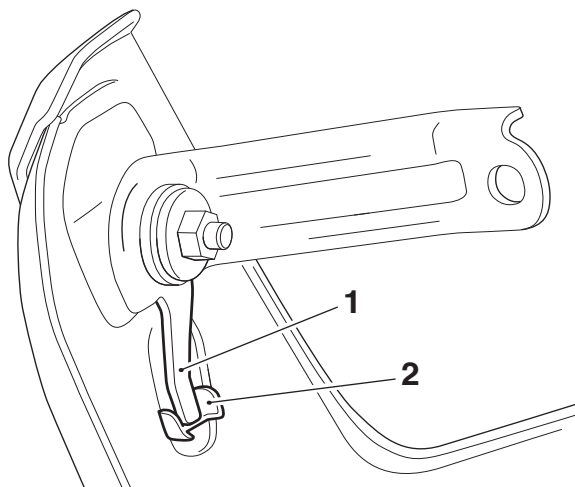
- Take the left hand upper bracket from the kit, insert one of the 1.8 mm grommets from the kit into the bracket.
- Using the M6 x 25 mm fixing, flanged sleeve, washer and nut from the kit, assemble the bracket to the sump guard and upper panel. Do not tighten the fixing at this stage.



- Sump guard
- Upper panel
- Left hand upper bracket
- Fixing, M6 x 25 mm
- Flanged sleeve
- Grommet, 1.8 mm
- Washer
- Nut
- Location tab
- Cup feature

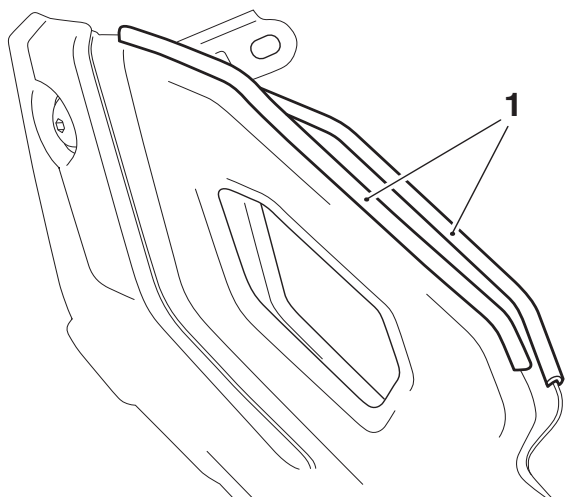
Note:

- The location tab on the upper bracket should be sat within the cup feature on the upper panel.



1. Location tab
2. Cup feature

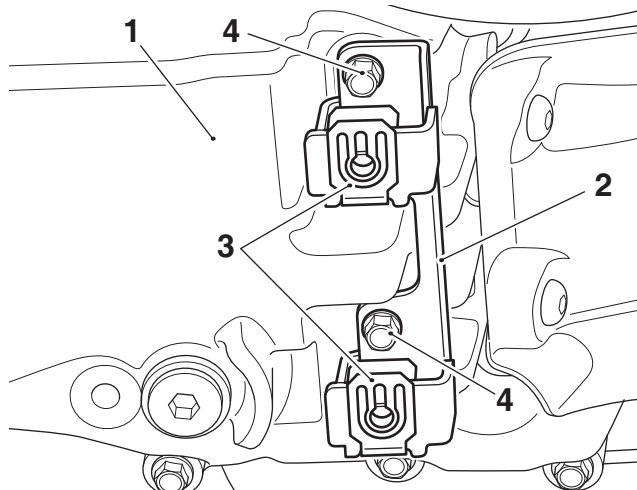
9. Repeat steps 7 and 8 for the right hand side.
10. Fit the two protective rubber trim pieces to the left and right side edges of the sump guard as shown to protect the engine covers during assembly.



1. Protective rubber trims

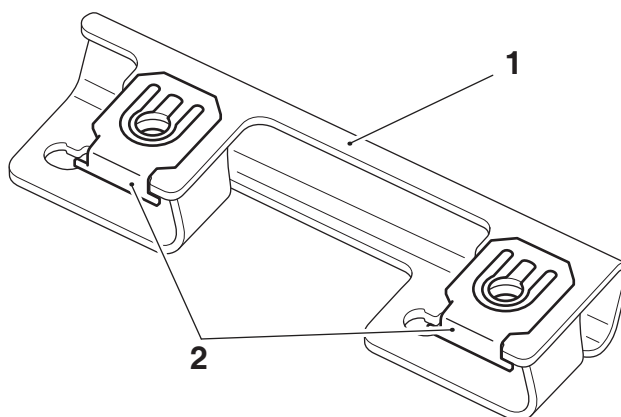
Tiger 1200 GT Explorer up to VIN BF1406 Only

11. Remove the front bracket from the engine sump. Remove the captive nuts from the front bracket. Retain the captive nuts for reuse, retain the front bracket for reuse if the motorcycle is to be returned to its original condition. Discard the fixings.



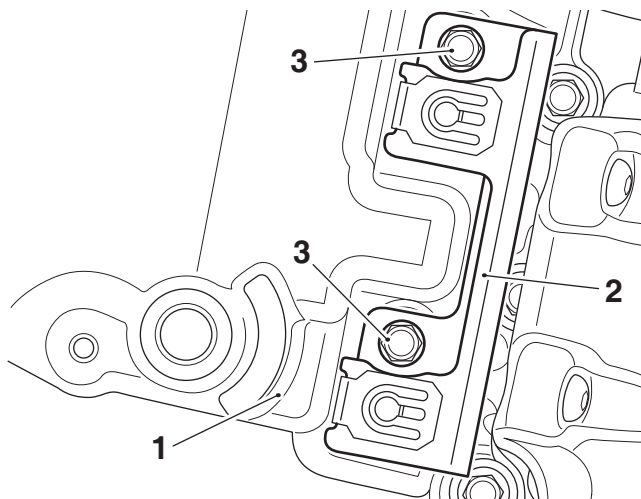
1. Engine sump
2. Front bracket
3. Captive nuts
4. Fixings

12. Fit the original captive nuts on to the front bracket from the kit in the orientation shown.



1. Front bracket
2. Captive nuts

13. Fit the front bracket to the engine sump in the orientation shown and fit the two M6 x 16 mm fixings from the kit. Tighten the fixings to **8 Nm**.



- 1. Engine sump
- 2. Front bracket
- 3. Fixings, M6 x 16 mm

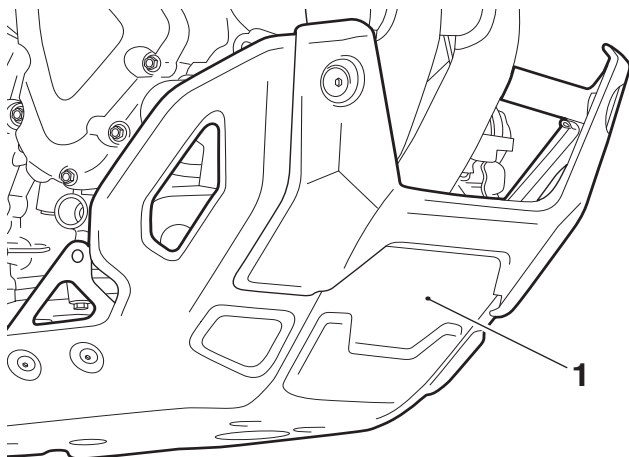
All Tiger 1200 GT Explorer Models



Caution

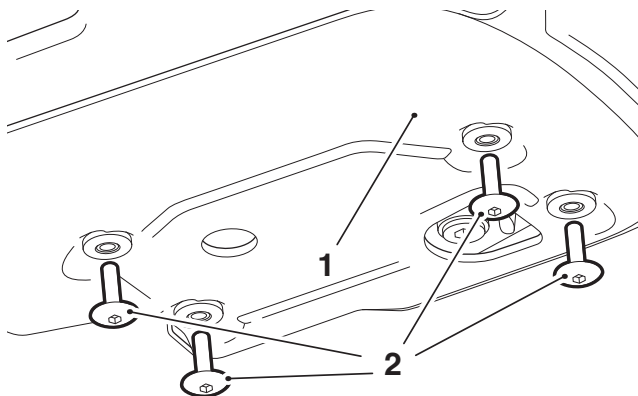
The sump guard fits closely to the engine in the fitted condition. Take extra care when aligning the sump guard to avoid damage to the sump guard and engine.

14. Align the sump guard assembly to the motorcycle.



- 1. Sump guard assembly

15. Refit the four M6 x 20 mm fixings from the skid plate to the mounting holes on the base of the sump guard. Do not tighten at this stage.



- 1. Sump guard assembly
- 2. Fixings, M6 x 20 mm

16. Refit the lower bars, using the original fixings. Do not fully tighten the fixing at this stage.

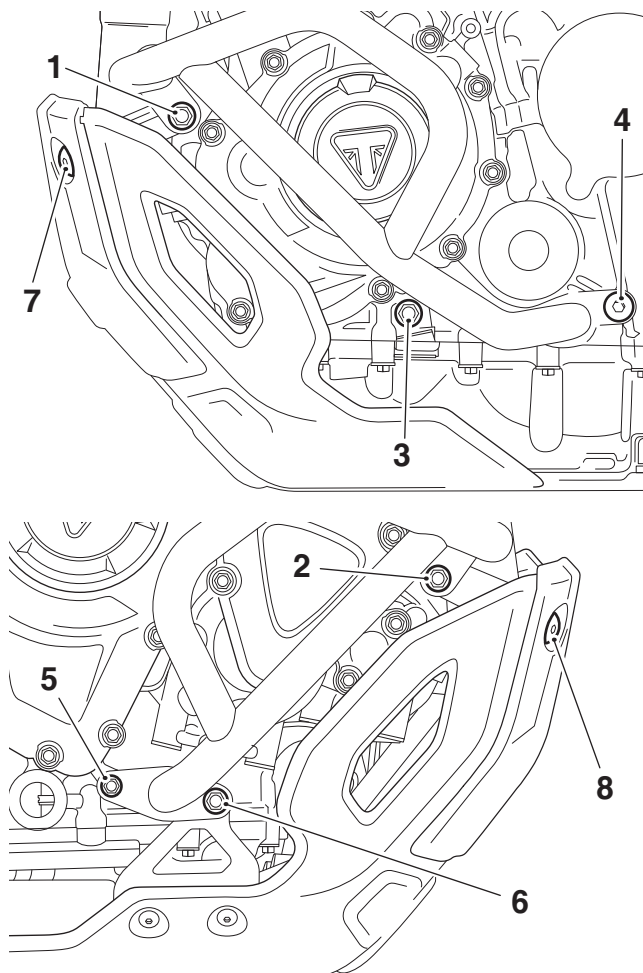


Caution

Make sure that the rubber grommets do not twist and distort during tightening of the fixings. A small amount of rubber lubricant can be applied to the surface of the rubber grommet where it contacts the fixing if necessary.

17. Tighten the four M6 x 20 mm fixings on the bottom of the sump guard to **8 Nm**.

18. Tighten the remaining fixings in the following order.



1. Tighten to 19 Nm
2. Tighten to 19 Nm
3. Tighten to 19 Nm
4. Tighten to 25 Nm
5. Tighten to 8 Nm
6. Tighten to 19 Nm
7. Tighten to 8 Nm
8. Tighten to 8 Nm

19. Remove the two protective rubber trims.



Warning

After fitting the accessory kit the motorcycle will exhibit new handling characteristics. Operate the motorcycle in a safe area free from traffic to gain familiarity with any new characteristics. Operation of the motorcycle when not familiar with any new handling characteristics may result in loss of motorcycle control and an accident.



Warning

Never ride an accessory-equipped motorcycle at speeds above 80 mph (130 km/h).

The presence of accessories will cause changes in the stability and handling of the motorcycle. Failure to allow for changes in motorcycle stability may lead to loss of control or an accident.

Remember that the 80 mph (130 km/h) limit will be reduced by the fitting of non-approved accessories, incorrect loading, worn tyres, overall motorcycle condition and poor road or weather conditions.



Warning

This motorcycle must not be operated above the legal road speed limit except in authorised closed-course conditions.



Warning

Only operate this Triumph motorcycle at high speed in closed-course on-road competition or on closed-course racetracks. High-speed operation should only be attempted by riders who have been instructed in the techniques necessary for high-speed riding and are familiar with the motorcycle's characteristics in all conditions.

High-speed operation in any other circumstances is dangerous and will lead to loss of motorcycle control and an accident.