



## Accessory Fitting Instructions

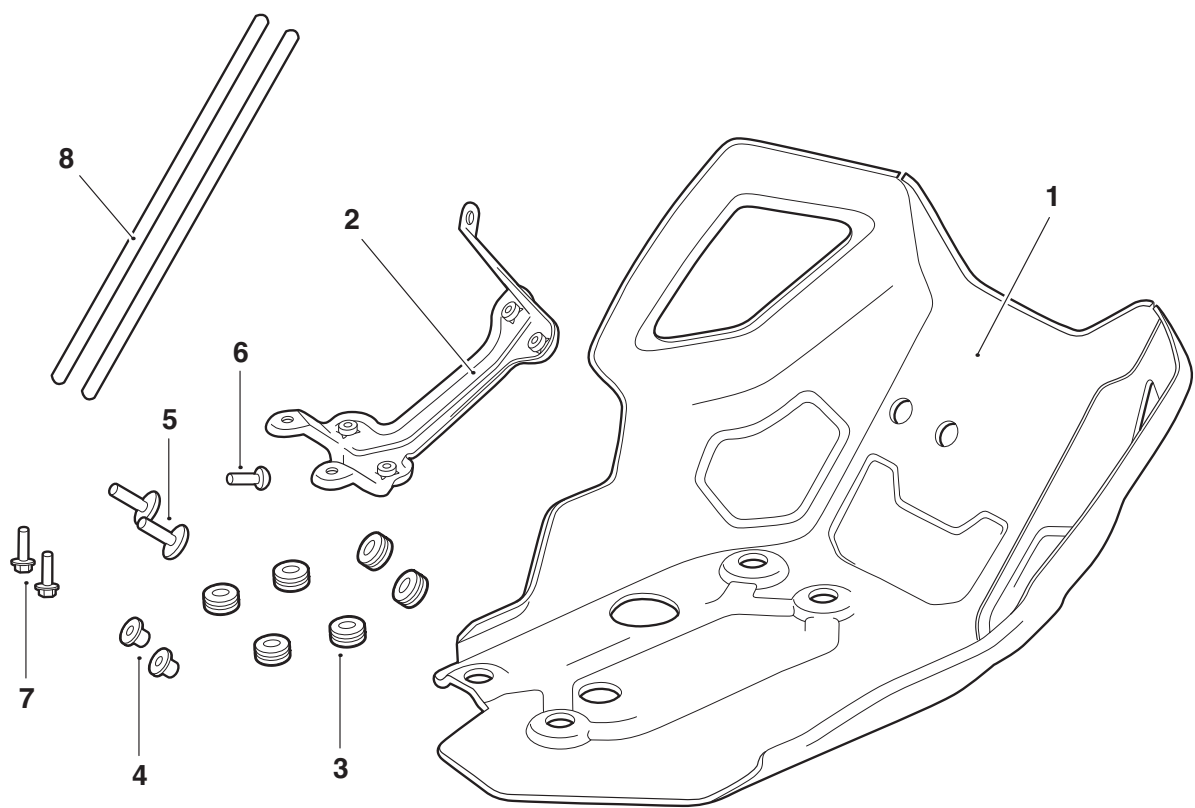
Sump Guard Kit	
Kit Number	Models Affected
A9701408	Tiger 1200 GT, Tiger 1200 GT Pro
A9701472	Tiger 1200 GT

Thank you for choosing this Triumph genuine accessory kit. This accessory kit is the product of Triumph's use of proven engineering, exhaustive testing, and continuous striving for superior reliability, safety and performance.

Completely read all of these instructions before commencing the installation of the accessory kit in order to become thoroughly familiar with the kit's features and the installation process.

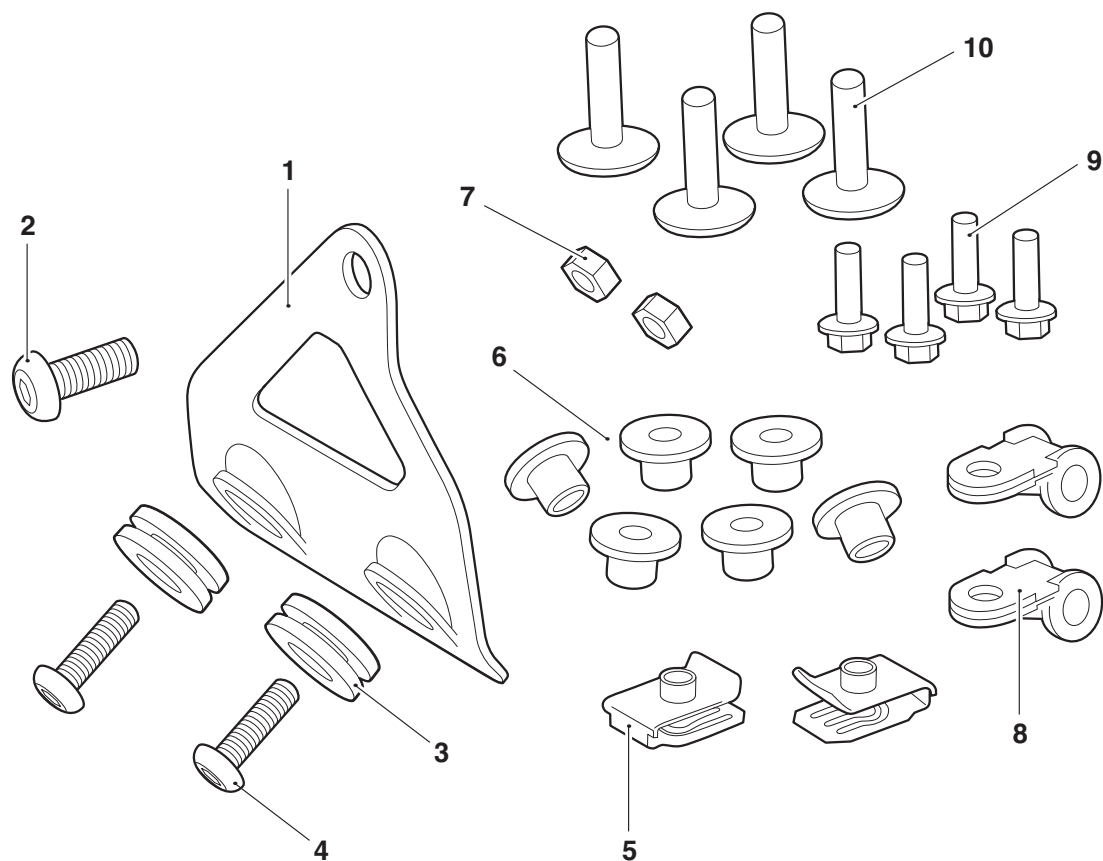
These instructions should be considered a permanent part of your accessory kit, and should remain with it even if your accessory equipped motorcycle is subsequently sold.

Parts Supplied: A9701408



1. Sump guard	1 off	5. Fixing, M6 pan head	2 off
2. Front bracket	1 off	6. Fixing, M6 button head	1 off
3. Rubber grommet, 4 mm	6 off	7. Fixing, M6 x 16 mm (encapsulated)	2 off
4. Flanged sleeve	2 off	8. Protective rubber trim	2 off

Parts Supplied: A9701472



1.	Side mounting bracket	1 off	6.	Flanged sleeve	6 off
2.	Fixing, M8 x 20 mm	1 off	7.	Nut, M6	2 off
3.	Rubber grommet, 1.8 mm	2 off	8.	P Clip	2 off
4.	Fixing, M6 button head	2 off	9.	Fixing, M6 x 16 mm (encapsulated)	4 off
5.	Captive nut	2 off	10.	Fixing, M6 pan head	4 off



## Warning

Fit only genuine Triumph accessories to those models approved by Triumph as listed in the associated Triumph fitting instructions. The accessory kits covered in this instruction are designed for use on specific models of Triumph motorcycle. The accessory kits and the models applicable are listed at the start of the instruction. They should never be fitted to any other Triumph model or to any other manufacturer's motorcycle. Fitting an accessory kit to a Triumph model not listed, or to any other manufacturer's motorcycle will affect the performance, stability and handling of the motorcycle. This may affect the rider's ability to control the motorcycle and could result in an accident causing severe injuries or death.



## Warning

Always have Triumph approved parts, accessories and conversions fitted by a trained technician of an authorised Triumph dealer. The fitment of parts, accessories and conversions by a technician who is not of an authorised Triumph dealer may affect the handling, stability or other aspects of the motorcycle's operation which may result in loss of motorcycle control and an accident.



## Warning

Throughout this operation, make sure that the motorcycle is stabilised and adequately supported to prevent risk of injury from the motorcycle falling.



## Warning

A torque wrench of known accurate calibration must be used when fitting this accessory kit. Failure to tighten any of the fasteners to the correct torque specification may affect motorcycle performance, handling and stability. This may result in loss of motorcycle control and an accident.



## Warning

If the engine has recently been running, the exhaust system will be hot. Before working on or near the exhaust system, allow sufficient time for the system to cool, as touching any part of a hot exhaust could cause burn injuries.

### Note:

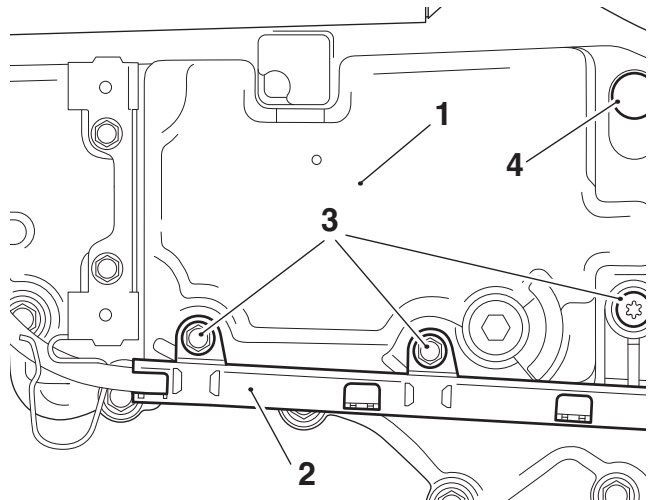
- Triumph offers a broad range of approved genuine accessories for your motorcycle. We cannot therefore cover all possible equipment variations in these instructions. For removal and installation of Triumph Genuine Accessories, always refer to the instructions supplied with the respective accessory kit. To obtain additional copies of any Triumph accessory instructions, visit [www.triumphinstructions.com](http://www.triumphinstructions.com) or contact your authorised Triumph dealer.

### Note:

- For Tiger 1200 GT models, the motorcycle does not come with a skid plate fitted as standard at the factory, therefore any parts specified for reuse following the removal of the skid plate, are instead provided in the kit A9701472.

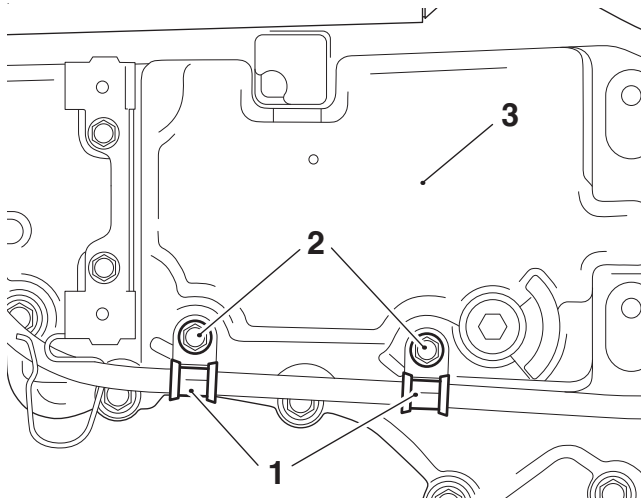
### Tiger 1200 GT only

- Remove the blanking plug and the 3 fixings holding the starter motor cable cover in place. Discard the fixings, retain the cover and blanking plug for reuse if the motorcycle is to be returned to its original condition.



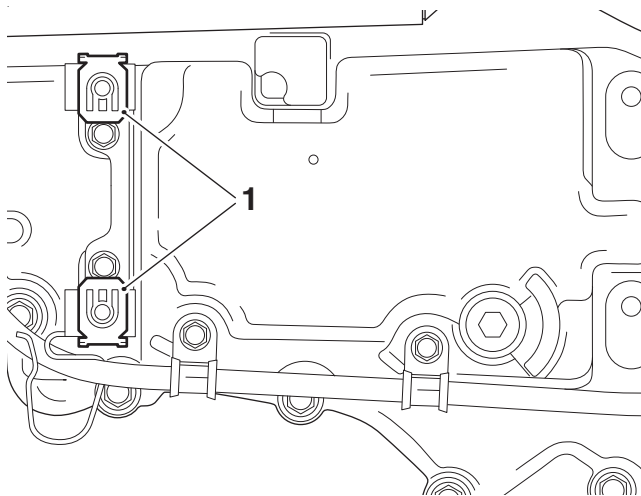
1. Sump
2. Starter motor cable cover
3. Fixings
4. Blanking plug

2. Fit the two P clips from the sump guard fix kit around the starter motor cable and secure to the sump using two of the M6 x 16 mm fixings from the sump guard fix kit. Tighten the fixings to **8 Nm**.



1. P clips
2. Fixings, M6 x 16 mm
3. Sump

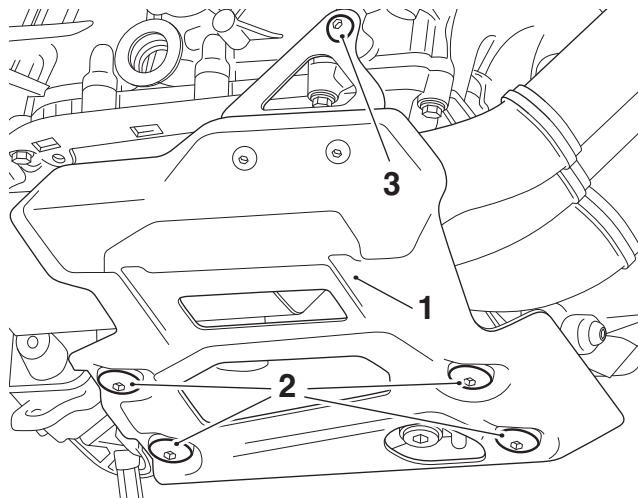
3. Fit the two captive nuts from the sump guard fix kit to the rear skid plate bracket.



1. Captive nut

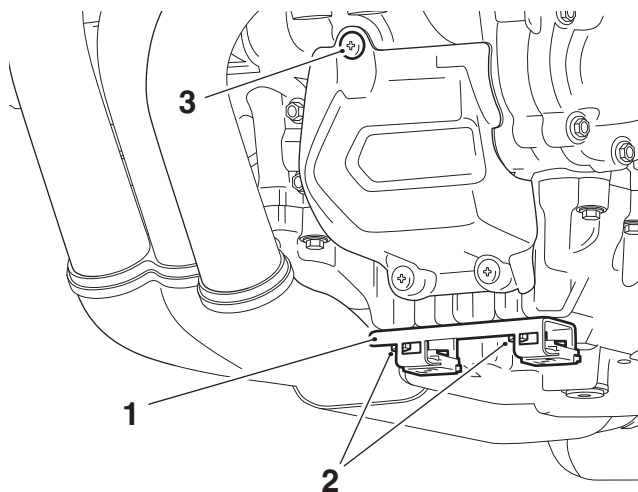
## All Models

4. Remove the skid plate from the motorcycle by removing the four M6 pan head fixings from the underside of the skid plate and the M8 x 20 mm fixing from the right side of the engine. Retain the fixings for reuse.



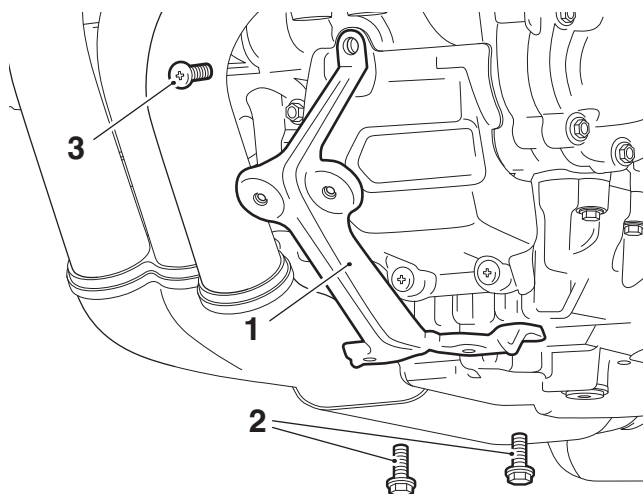
1. Skid plate
2. Fixings, M6 pan head
3. Fixing, M8 x 20 mm

5. Remove the skid plate front mounting bracket by removing the two encapsulated fixings from the underside of the skid plate. Discard the encapsulated fixings. Retain the sump guard front bracket, for reuse if the motorcycle is to be returned to its original condition.
6. Remove the upper fixing from the starter motor cover. Retain the fixing for reuse if the motorcycle is to be returned to its original condition.



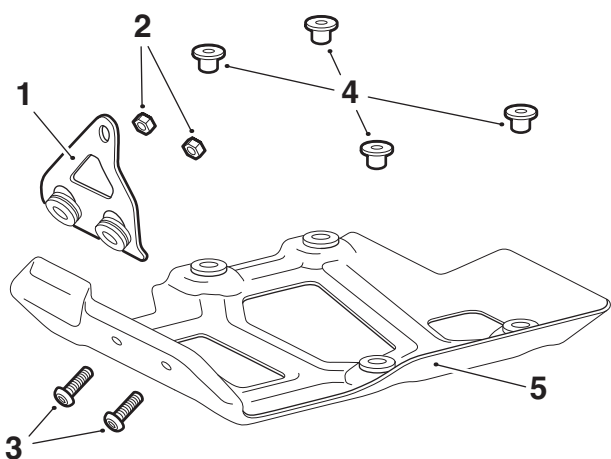
1. Skid plate, front mounting bracket
2. Fixings, encapsulated
3. Fixing, starter motor cover

7. Fit the sump guard front bracket from the kit, using the two remaining M6 x 16 mm encapsulated fixings from the kit on the underside of the sump and a new M6 button head fixing from the kit onto the starter motor cover. Tighten the fixings to **8 Nm**.



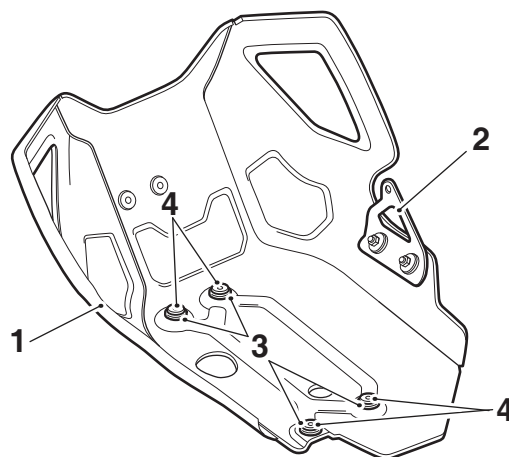
1. Sump guard front bracket
2. Fixings, M6 x 16 mm encapsulated
3. Fixing, M6 button head

8. Remove the side mounting bracket assembly with the two rubber grommets, sleeves, M6 button head fixings and M6 nuts from the skid plate. Remove the four remaining flanged sleeves from the skid plate. Retain all of the parts for reuse. Retain the skid plate and four remaining rubber grommets if the motorcycle is to be returned to its original condition.



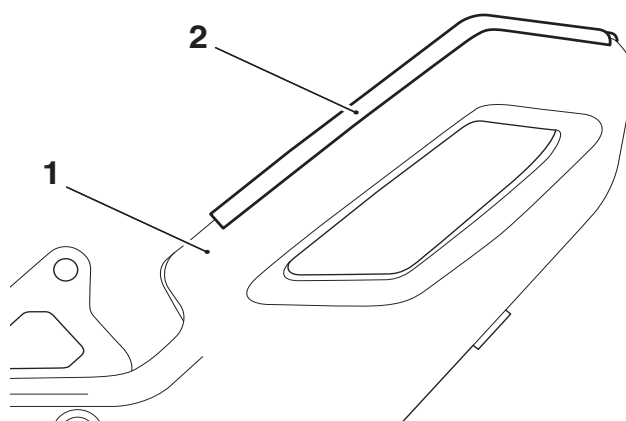
1. Side mounting bracket assembly
2. M6 nuts
3. Fixings, M6 button head
4. Flanged sleeves
5. Skid plate

9. Fit the side mounting bracket to the sump guard from the kit, reusing the M6 button head fixings and M6 nuts for the side bracket. Tighten the fixings to **6 Nm**.
10. Fit the six grommets from the kit and flanged sleeves to the sump guard, reusing four sleeves from the skid plate and two new sleeves from the kit.



1. Sump guard
2. Side mounting bracket assembly
3. Rubber grommets, 4 mm
4. Flanged sleeves

11. Fit the two protective rubber trim pieces to the left and right side edges of the sump guard as shown to protect the engine covers during assembly.



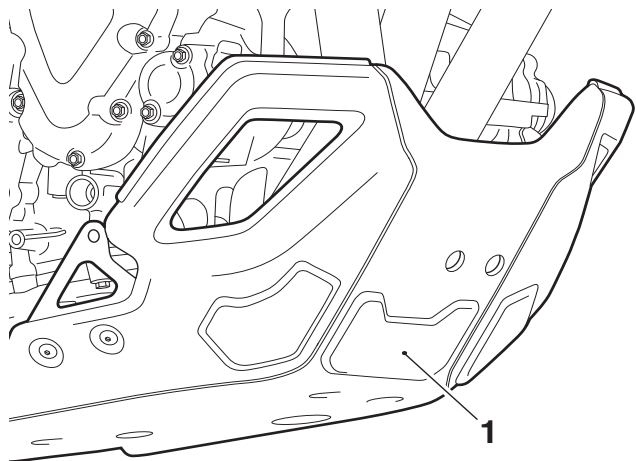
1. Sump guard
2. Protective rubber trim



### Caution

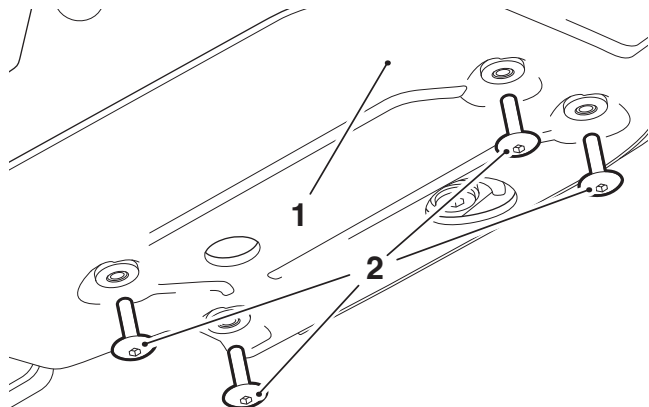
The sump guard fits closely to the engine in the fitted condition. Take extra care when aligning the sump guard to avoid damage to the sump guard and engine.

12. Align the sump guard assembly to the motorcycle.



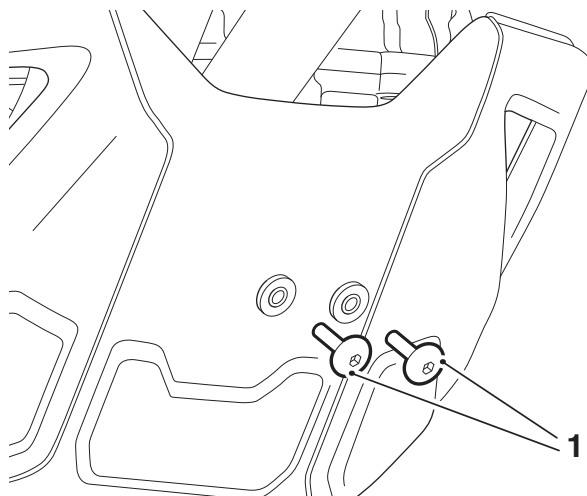
**1. Sump guard assembly**

13. Fit four M6 pan head fixings to the mounting holes on the base of the sump guard. Do not tighten at this stage.



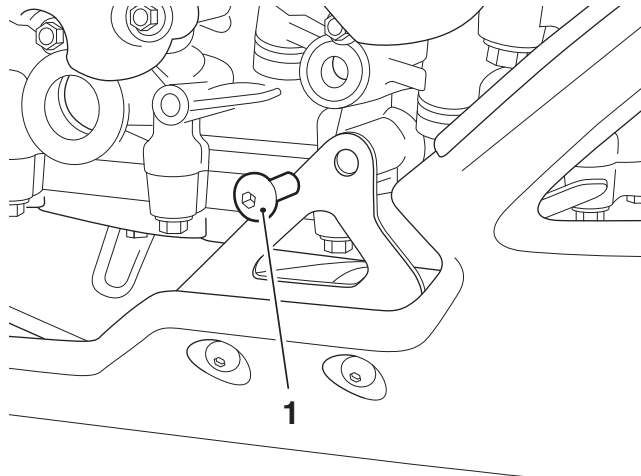
- 1. Sump guard assembly**  
**2. Fixings, M6 pan head**

14. Fit two M6 pan head fixings to the front mounting holes of the sump guard. Do not tighten at this stage.



**1. Fixings, M6 pan head**

15. Reuse the M8 x 20 mm fixing to mount the side bracket to the crankcase. Tighten to **19 Nm**.



**1. Fixing, M8 x 20 mm**



**Caution**

Make sure that the rubber grommets do not twist and distort during tightening of the fixings. A small amount of rubber lubricant can be applied to the surface of the rubber grommet where it contacts the fixing if necessary.

16. Tighten the M6 pan head fixings at the front and the bottom of the sump guard to **8 Nm**.  
17. Remove the two protective rubber trims.



### Warning

After fitting the accessory kit the motorcycle will exhibit new handling characteristics. Operate the motorcycle in a safe area free from traffic to gain familiarity with any new characteristics. Operation of the motorcycle when not familiar with any new handling characteristics may result in loss of motorcycle control and an accident.



### Warning

Never ride an accessory-equipped motorcycle at speeds above 80 mph (130 km/h).

The presence of accessories will cause changes in the stability and handling of the motorcycle. Failure to allow for changes in motorcycle stability may lead to loss of control or an accident.

Remember that the 80 mph (130 km/h) limit will be reduced by the fitting of non-approved accessories, incorrect loading, worn tyres, overall motorcycle condition and poor road or weather conditions.



### Warning

This motorcycle must not be operated above the legal road speed limit except in authorised closed-course conditions.



### Warning

Only operate this Triumph motorcycle at high speed in closed-course on-road competition or on closed-course racetracks. High-speed operation should only be attempted by riders who have been instructed in the techniques necessary for high-speed riding and are familiar with the motorcycle's characteristics in all conditions.

High-speed operation in any other circumstances is dangerous and will lead to loss of motorcycle control and an accident.