



Accessory Fitting Instructions

Thank you for choosing this Triumph genuine accessory kit. This accessory kit is the product of Triumph's use of proven engineering, exhaustive testing, and continuous striving for superior reliability, safety and performance.

Completely read all of these instructions before commencing the installation of the accessory kit in order to become thoroughly familiar with the kit's features and the installation process.

These instructions should be considered a permanent part of your accessory kit, and should remain with it even if your accessory equipped motorcycle is subsequently sold.

Indicator Relocation Kit	
Kit Number	Models
A9700145	Scrambler 1200 XC, Scrambler 1200 XE to VIN BN8495
A9700448	Scrambler 1200 X, Scrambler 1200 XE from VIN BP0855
Indicator Relocation Kit - Multi Function	
Kit Number	Models
A9701331	Scrambler 1200 XC, Scrambler 1200 XE to VIN BN8495
A9701333	Scrambler 1200 XC, Scrambler 1200 XE, Scrambler 1200 X

NOTICE

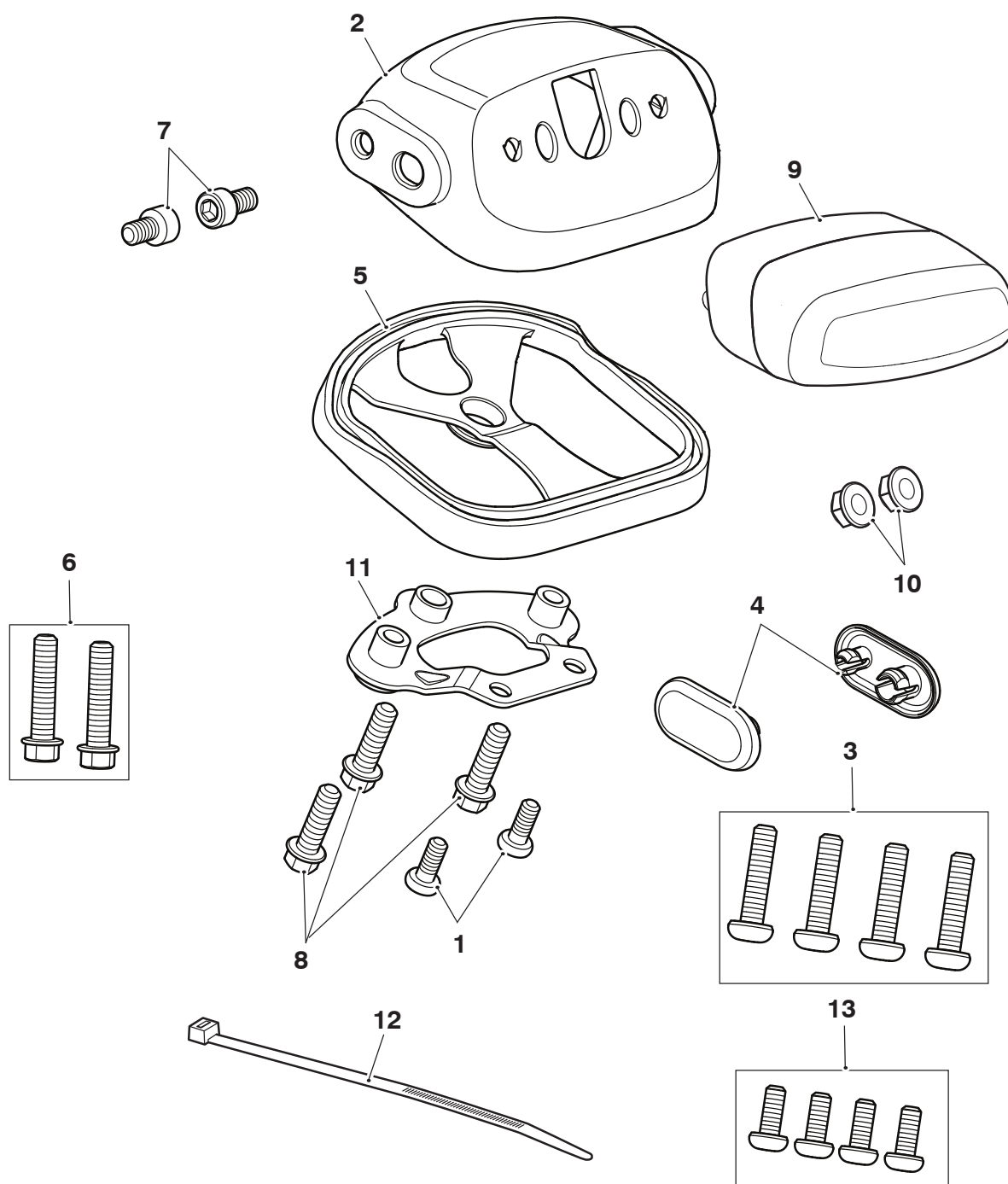
Fitment of the multi function light kits may contravene local laws in some countries and render the motorcycle illegal for road use.

NOTICE

The Indicator Relocation Kit A9701331 and A9701333 must be fitted together with the Multi Function Light Kits A9838056 or A9830140 and front LED indicators A9838023 or A9838028. Failure to do so will render the motorcycle illegal for road use.

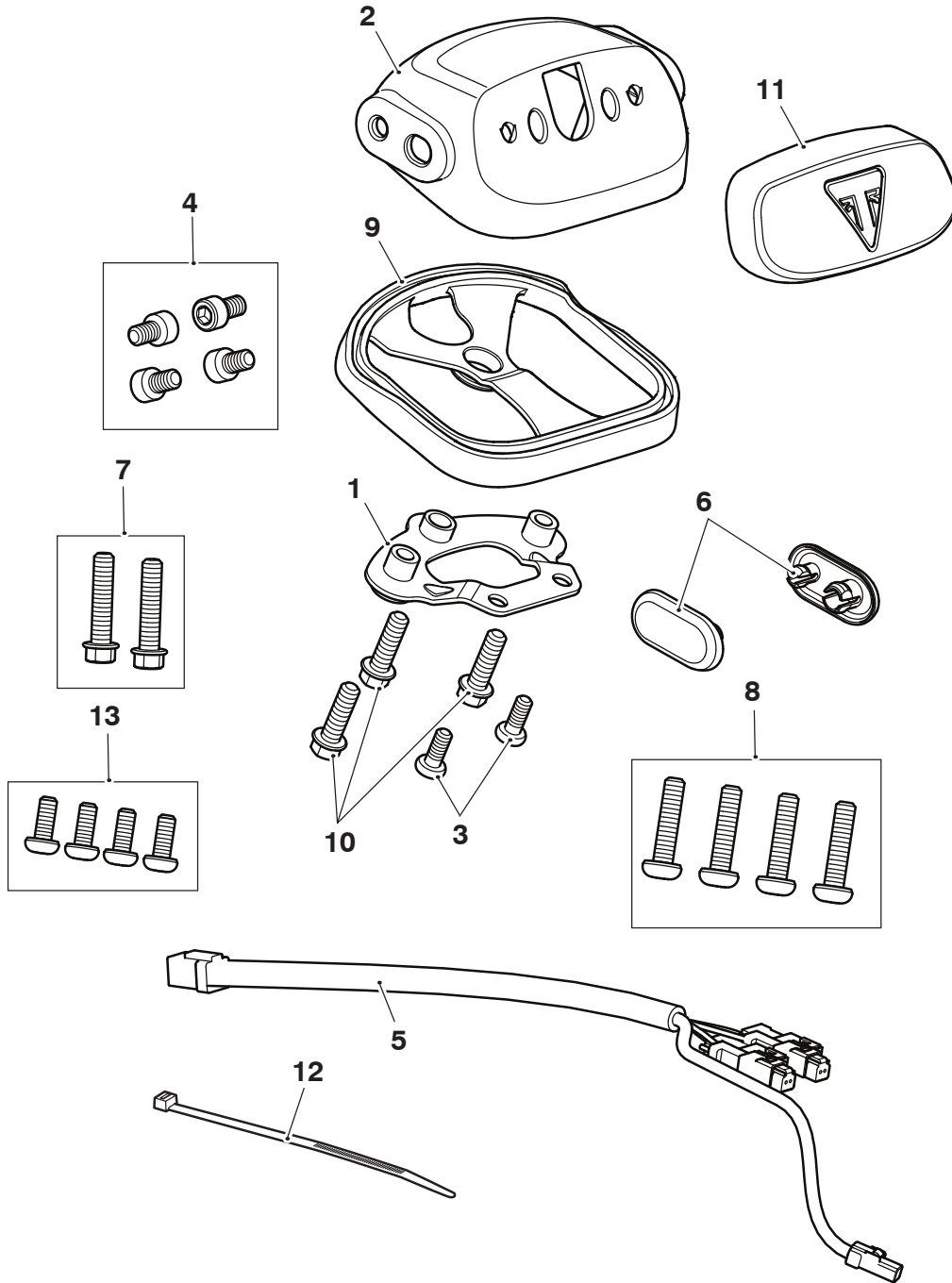
Parts supplied

A9700145, A9700448



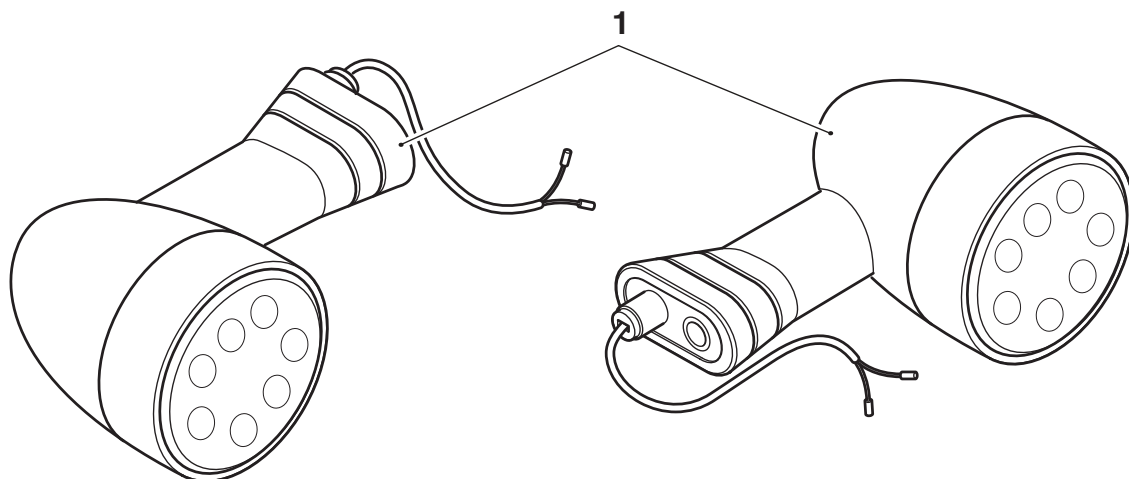
1. Fixing, M5 x 12 mm	2 off	8. Fixing, M6 x 20 mm	3 off
2. Support moulding	1 off	9. Rear light	1 off
3. Fixing, M6 x 25 mm	4 off	10. Lock nut, M6	2 off
4. Plastic finishers	2 off	11. Bracket	1 off
5. Rubber gasket	1 off	12. Cable tie	1 off
6. Fixing, M6 x 28 mm	2 off	13. Fixing, M5 x 12 mm (encapsulated)	4 off
7. Fixing, M6 x 10 mm (encapsulated)	2 off	14. Washer (kit A9700448 only)	1 off

A9701331, A9701333



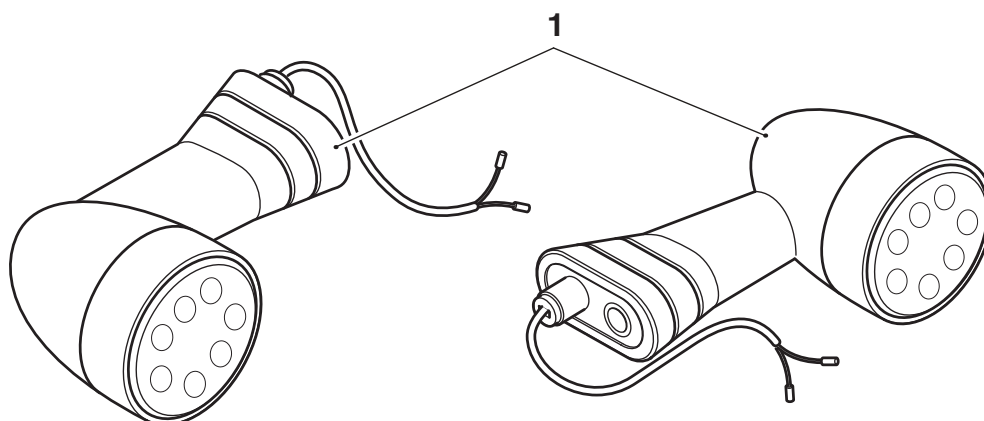
1. Bracket	1 off	8. Fixing, M6 x 25 mm	4 off
2. Support moulding	1 off	9. Rubber gasket	1 off
3. Fixing, M5 x 12 mm	2 off	10. Fixing, M6 x 20 mm	3 off
4. Fixing, M6 x 10 mm (encapsulated)	4 off	11. Aluminium finisher	1 off
5. Multi function harness	1 off	12. Cable tie	1 off
6. Plastic finisher	2 off	13. Fixing, M5 x 12 mm (encapsulated)	4 off
7. Fixing, M6 x 28 mm	2 off	14. Washer (kit A9701333 only)	1 off

A9838056



1. Multi function light	2 off
-------------------------	-------

A9830140



1. Multi function light	2 off
-------------------------	-------

⚠ WARNING

Fit only genuine Triumph accessories to those models approved by Triumph as listed in the associated Triumph fitting instructions.

The accessory kits covered in this instruction are designed for use on specific models of Triumph motorcycle. The accessory kits and the models applicable are listed at the start of the instruction. They should never be fitted to any other Triumph model or to any other manufacturer's motorcycle.

Fitting an accessory kit to a Triumph model not listed, or to any other manufacturer's motorcycle, will affect the performance, stability and handling of the motorcycle.

Failure to follow the advice above may lead to loss of motorcycle control which could result in serious injury or death.

⚠ WARNING

Always have Triumph approved parts, accessories and conversions fitted by a competent person with the specialist knowledge and technical understanding of motorcycles, such as an authorised Triumph dealer.

The fitment of parts, accessories and conversions by a person without the specialist knowledge and technical understanding of motorcycles may affect the handling, stability or other aspects of the motorcycle's operation.

Failure to follow the advice above may lead to loss of motorcycle control which could result in serious injury or death.

⚠ WARNING

A torque wrench of known accurate calibration must be used when fitting this accessory kit.

Failure to tighten any of the fasteners to the correct torque specification may affect motorcycle performance, handling and stability.

Failure to follow the advice above may lead to loss of motorcycle control which could result in serious injury or death.

⚠ WARNING

Make sure the motorcycle is stabilised and adequately supported.

Do not support the motorcycle on any ancillary component, the exhaust system or any other non structural parts of the motorcycle frame.

A correctly supported motorcycle will help prevent it from falling.

An unstable motorcycle may fall resulting in motorcycle damage, serious injury or death.

NOTICE

Triumph offers a broad range of approved genuine accessories for your motorcycle.

We cannot therefore cover all possible equipment variations in these instructions. For removal and installation of Triumph Genuine Accessories, always refer to the instructions supplied with the respective accessory kit.

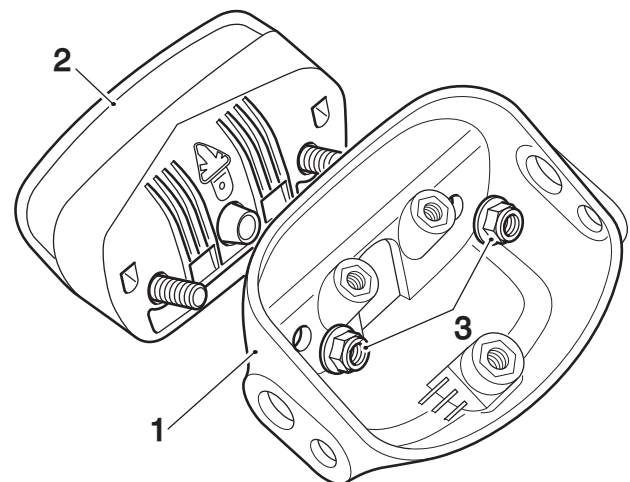
To obtain additional copies of any Triumph accessory instructions, visit www.triumphinstructions.com or contact your authorised Triumph dealer.

Fitment of Indicator Relocation Kit

1. Remove the seat and underseat storage box as described in the Service Manual.
2. Disconnect the battery, as described in the Service Manual.
3. Disconnect the rear light harness from the main wiring harness.
4. Remove the rear mudguard, mudguard support, rear light and rear indicators as described in the Service Manual. Retain the flanged sleeves for reuse.
5. Remove the support moulding from the rear mudguard as described in the Service Manual.
6. Remove the licence plate holder from the support moulding as described in the Service Manual.

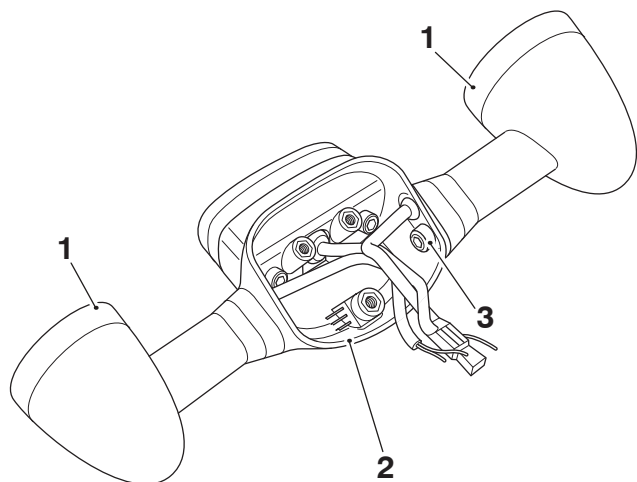
Accessory kit A9700145 only

7. Collect the rear light, support moulding and M6 lock nuts from the kit.
8. Fit the rear light on to the support moulding and secure with the M6 lock nuts. Tighten the lock nuts to **6 Nm**.



1. Support moulding
2. Rear light
3. Lock nuts, M6

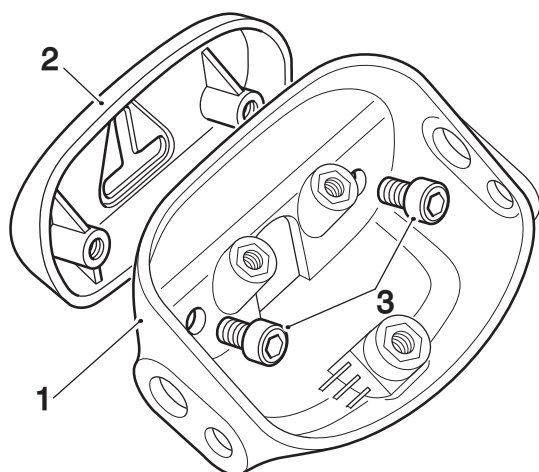
9. If present, fit the original rear indicators to the support moulding in the orientation shown. The indicator with red tape on the harness should be fitted to the right hand side of the support moulding. Secure with the M6 x 10 mm encapsulated fixings from the kit. Tighten the fixings to **5 Nm**.



- 1. Indicators
- 2. Support moulding
- 3. Fixings, M6 x 10 mm, encapsulated

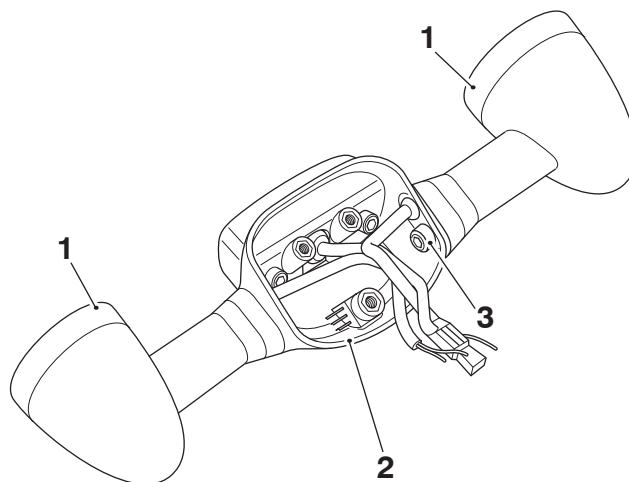
Accessory kit A9701331 and A9701333 only

10. Remove the rear light harness from the motorcycle. Retain the rear light harness for reuse if the motorcycle is to be returned to its original condition.
11. Fit the aluminium finisher from the kit to the support moulding and secure with two M6 x 10 mm encapsulated fixings from the kit. Tighten the fixings to **3 Nm**.



- 1. Support moulding
- 2. Aluminium finisher
- 3. Fixings, M6 x 10 mm encapsulated

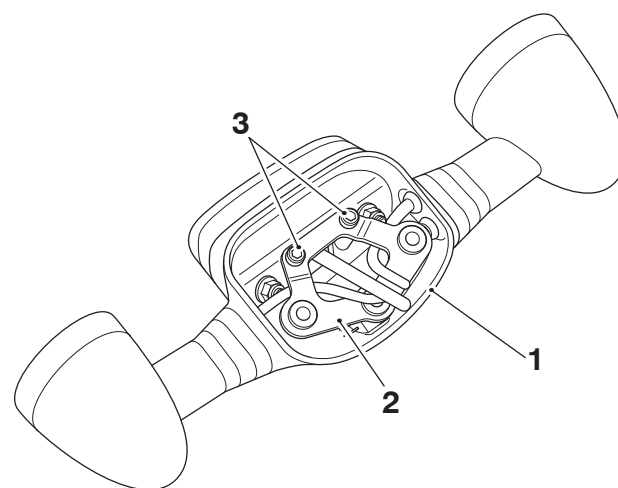
12. Fit the multi function lights to the support moulding in the orientation shown. If the multi function light has red heat shrink on the harness it should be fitted to the right hand side of the support moulding. Secure each light with an M6 x 10 mm encapsulated fixing from the kit. Tighten the fixings to **5 Nm**.



- 1. Multi function lights
- 2. Support moulding
- 3. Fixings, M6 x 10 mm, encapsulated

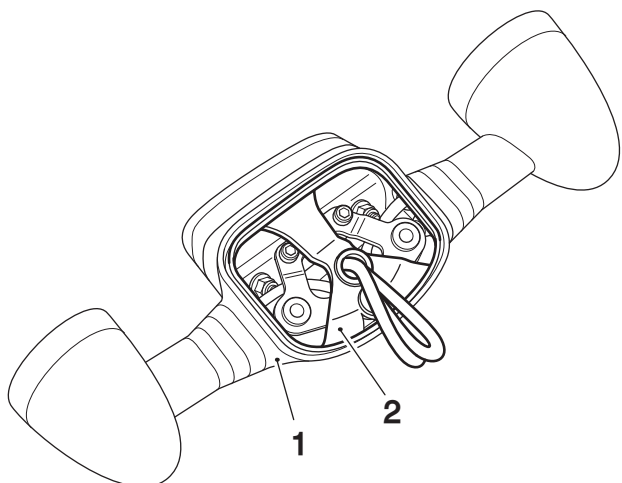
All accessory kits

13. Fit the bracket from the kit on to the support moulding ensuring all harnesses are routed through the centre of the bracket as shown. Fit two M5 x 12 mm fixings from the kit and tighten to **4 Nm**.



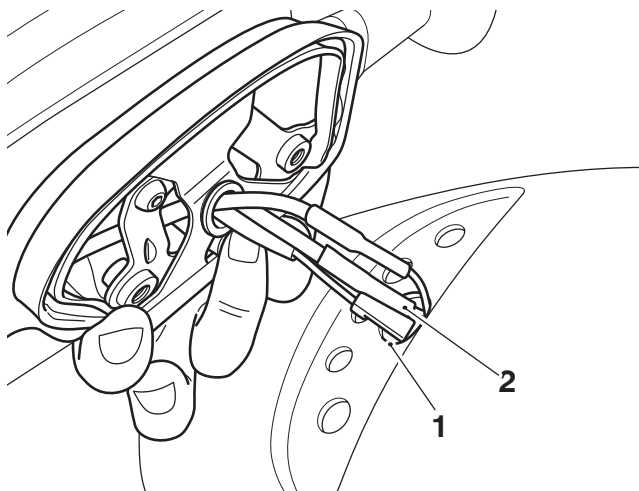
- 1. Support moulding
- 2. Bracket
- 3. Fixings, M5 x 12 mm

14. Fit the rubber gasket on to the support moulding, routing all harnesses through the hole in the rubber gasket, as shown.



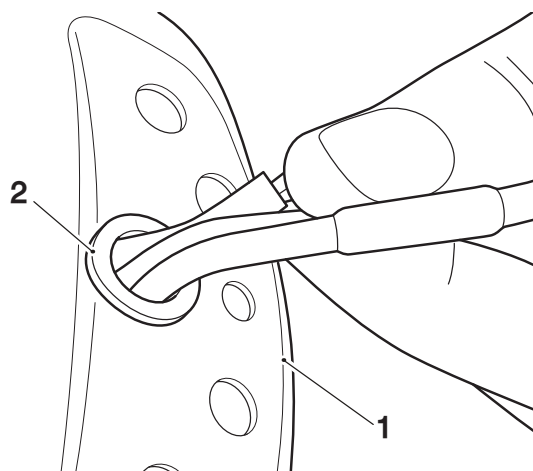
1. Support moulding
2. Rubber gasket

15. Feed the rear light and indicator, or multi function light harnesses through the large hole in the rear mudguard as shown.



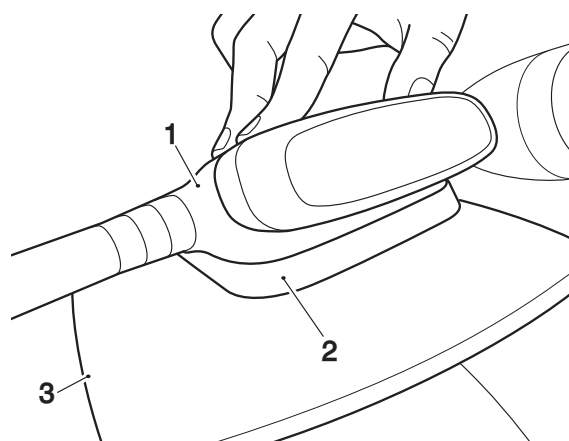
1. Large hole, rear mudguard
2. Harnesses

16. Pull the centre section of the rubber gasket through the hole in the rear mudguard to form a grommet, as shown.



1. Rear mudguard
2. Rubber gasket

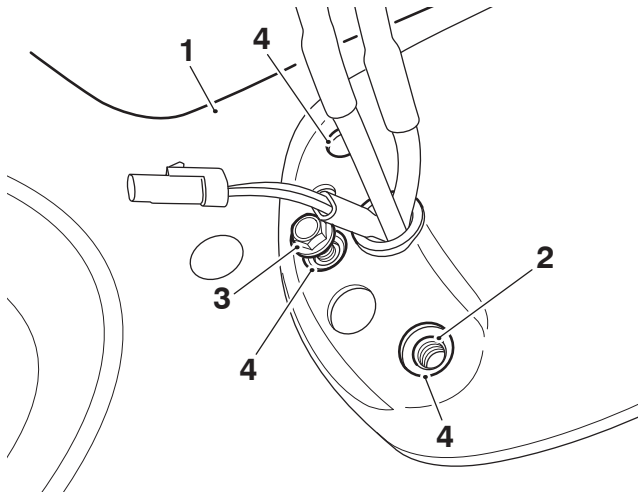
17. Position the support moulding on the rear mudguard ensuring the rubber gasket remains correctly located on the support moulding.



1. Support moulding
2. Rubber gasket
3. Rear mudguard

Scrambler 1200 X only

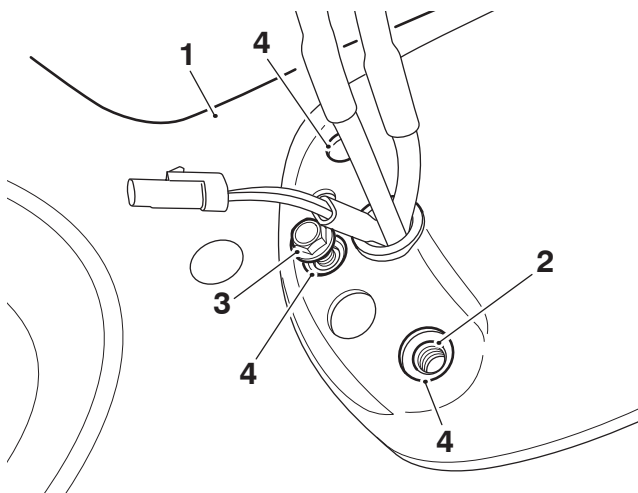
18. Align the fixing holes in the rear mudguard with the support moulding and fit the original bolt and spacer, and washer from kit (if provided), as shown. Make sure all the fixing holes remain aligned and tighten the centre fixing to **4 Nm**. Fit the M6 x 20 mm fixings from the kit to the outer fixing holes and tighten to **8 Nm**



- 1. Rear mudguard
- 2. Support moulding
- 3. Fixings, M6 x 20 mm
- 4. Outer fixing holes

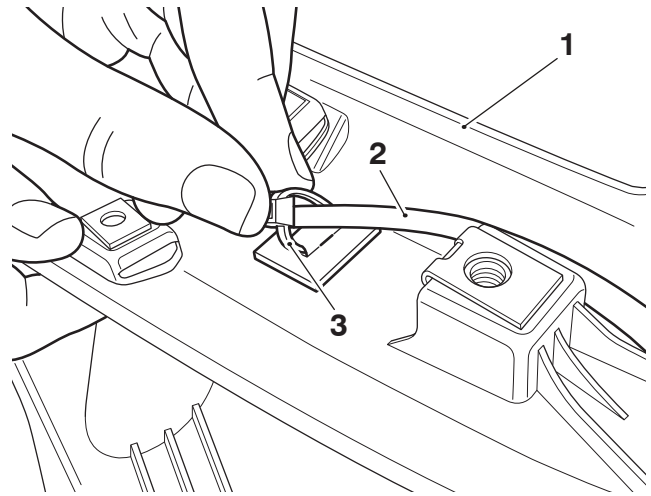
All other models

19. Align the fixing holes in the rear mudguard with the support moulding and fit an M6 x 20 mm fixing from the kit to the centre fixing position, as shown. Make sure all the fixing holes remain aligned, tighten the centre fixing to **4 Nm** and the outer fixings to **8 Nm**.



- 1. Rear mudguard
- 2. Support moulding
- 3. Fixings, M6 x 20 mm
- 4. Outer fixing holes

20. Connect the licence plate harness to the rear harness, or multi function harness.
21. Cable tie the licence plate light harness to the rear mudguard support moulding, as shown.

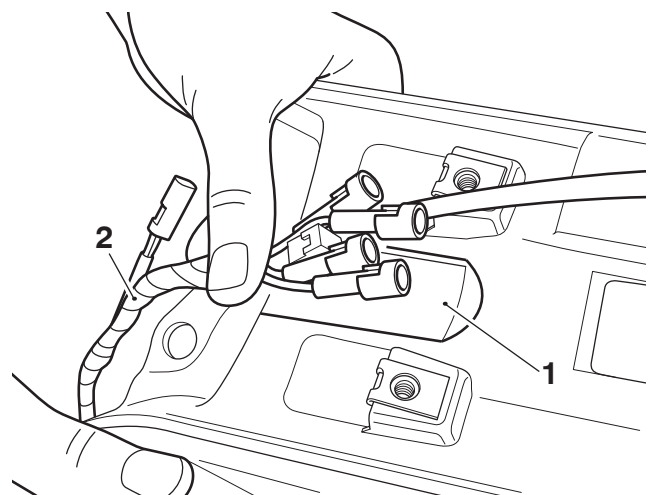


- 1. Rear mudguard, support moulding
- 2. Rear harness
- 3. Cable tie

⚠ WARNING

When cutting cable ties, always use the correct tools and personal protection equipment. Failure to use these may result in personal injury.

22. Trim off any excess cable tie.
23. Locate the rear light harness in the recess groove in the support moulding.

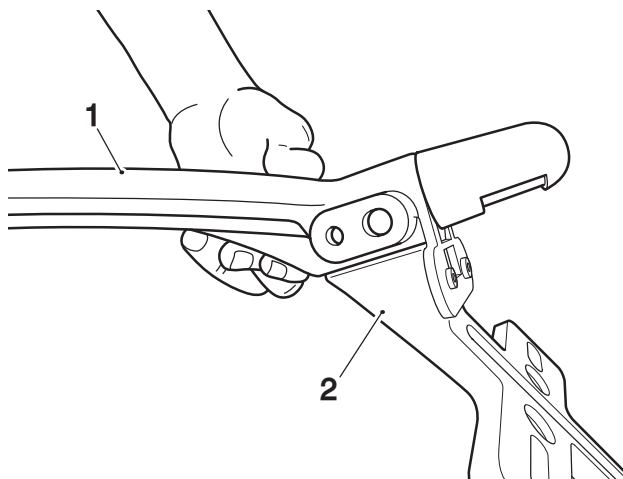


- 1. Recess groove, support moulding
- 2. Rear light harness

⚠ CAUTION

A wiring harness which becomes trapped or kinked during installation, or motorcycle operation, may result in wiring harness damage and electrical malfunctions.

24. Fit the rear mudguard support moulding on to the licence plate hanger.

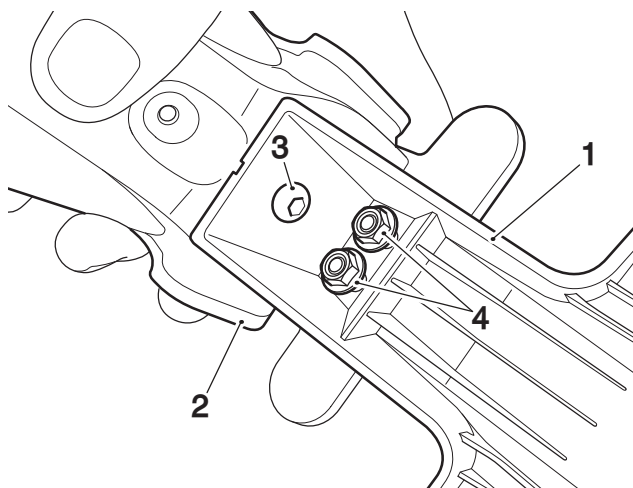


1. Rear mudguard, support moulding
2. Licence plate hanger

NOTICE

Lock nuts can be re-used providing resistance can be felt when the locking portion passes over the thread of the bolt or stud. Always use the correct replacement lock nut as recommended in the Triumph parts catalogue.

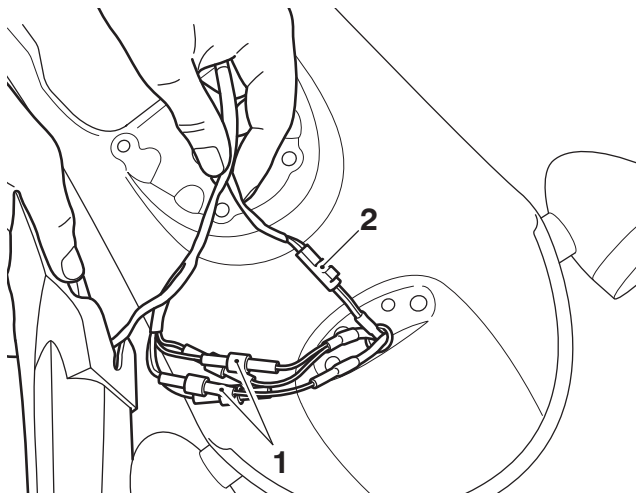
25. Align the fixing positions of the licence plate hanger with the fixing positions on the rear mudguard support moulding, as shown. Fit an M5 x 12 mm encapsulated fixing from the kit, using the original lock nuts and tighten to **3 Nm**.



1. Rear mudguard, support moulding
2. Licence plate hanger
3. Fixing, M5 x 12 mm encapsulated
4. Lock nuts

Accessory kit A9700145 and A9700448 only

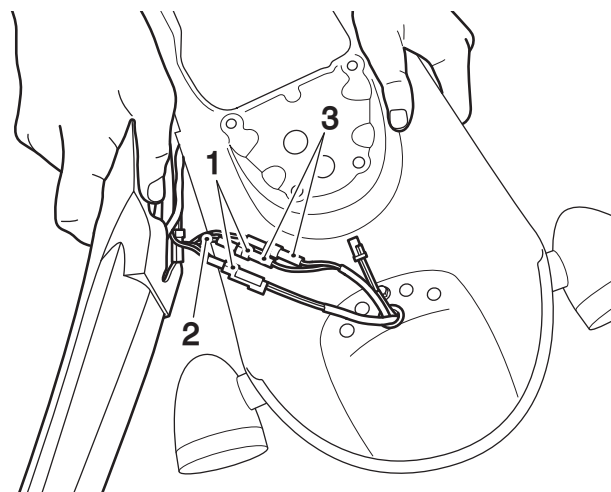
26. Connect the rear light and rear indicators to the rear light harness. The red taped connector on the harness connects to the right hand side white indicator lead connector. The green wired connector on the rear harness connects to the left hand side white indicator lead connector. The two remaining rear light harness and indicator connectors are non handed common negative connections.



1. Rear indicator connections
2. Rear light connection

Accessory kit A9701331 and A9701333 only

27. Connect the multi function lights to the multi function harness. The red taped connector on the harness connects to the right hand side multi function light.

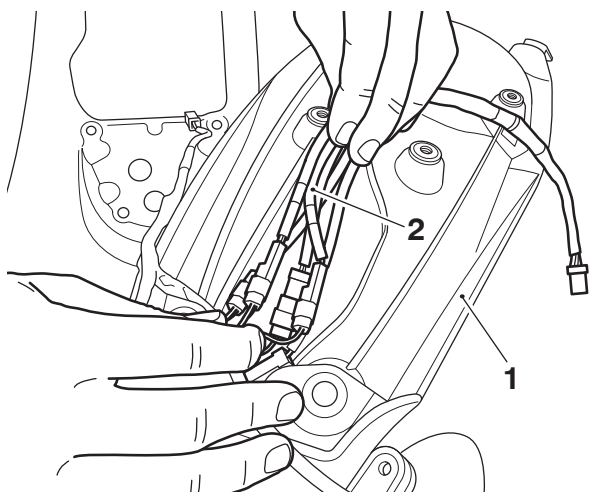


1. Multi function harness connectors
2. Red tape
3. Multi function light connectors, right hand

28. Following the instructions for the respective kit, fit accessory front LED indicators A9838023 or A9838028.

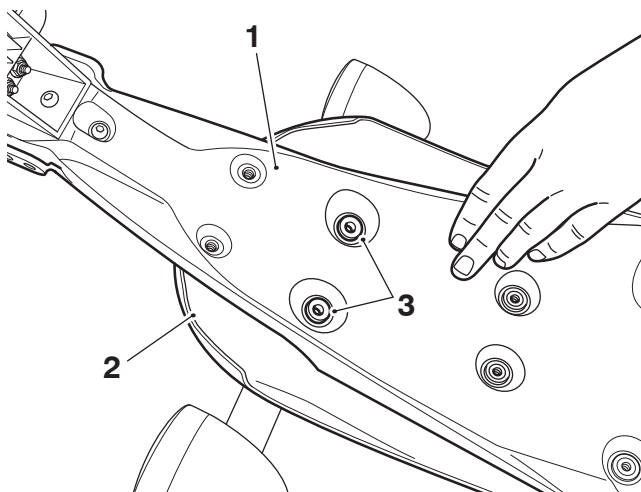
All accessory kits

29. Make sure the rear light harness is routed correctly on the support moulding as shown.



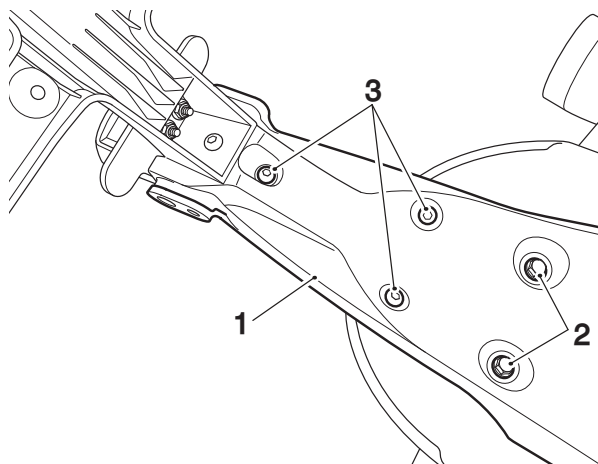
- 1. Support moulding
- 2. Rear light harness

30. Refit the rear mudguard on to the support moulding, align the fixing positions and fit the original flanged sleeves as shown.



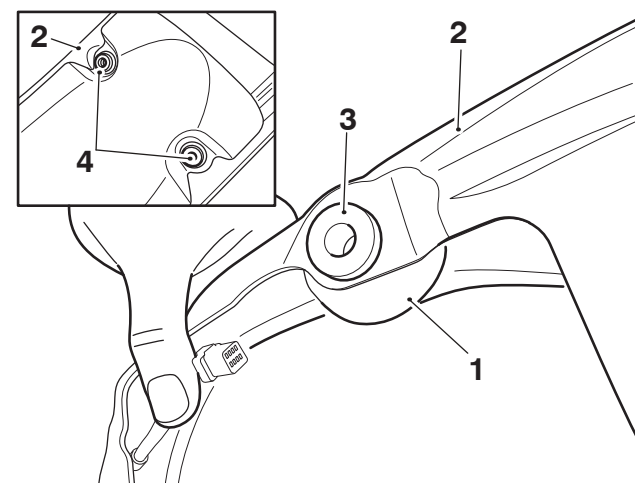
- 1. Support moulding
- 2. Rear mudguard
- 3. Flanged sleeves

31. Fit M6 x 20 mm fixings from the kit in to the flanged sleeve fixing positions and tighten to **9 Nm**. Fit the M5 x 12 mm encapsulated fixings from the kit to the three remaining fixing positions in the support moulding and tighten to **3 Nm**.



- 1. Support moulding
- 2. Fixings, M6 x 20 mm
- 3. Fixings, M5 x 12 mm encapsulated

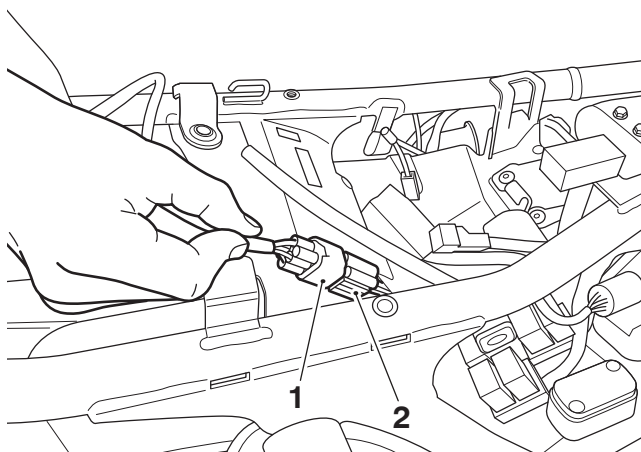
32. Relocate the grommets in the support moulding through the front section of the mudguard and fit the original flanged sleeves through the grommets from the underside of the mudguard.



- 1. Support moulding
- 2. Rear mudguard
- 3. Grommets
- 4. Flanged sleeves

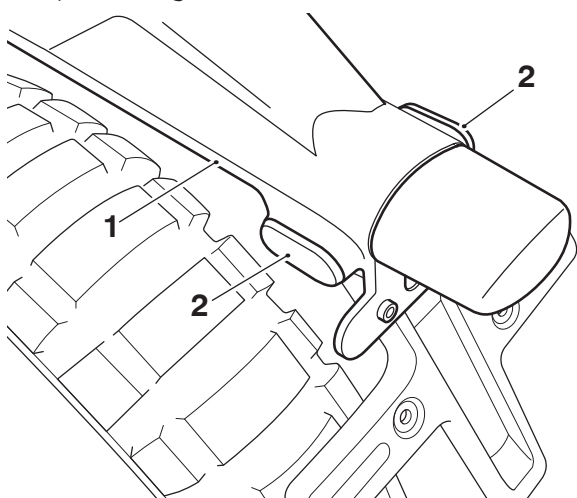
33. Refit the rear mudguard assembly as described in the Service Manual.

34. Connect the rear light harness connector to the motorcycle main wiring harness connector.



1. Rear light harness connector
2. Main wiring harness connector

35. Reconnect the battery, positive (red) lead first and tighten the battery terminals to **4.5 Nm**.
36. Check that the indicators, rear light and licence plate light function correctly.
37. Refit the underseat storage box and seat, as described in the Service Manual.
38. Fit the plastic finishers from the kit to the original indicator mountings on the licence plate hanger.



1. Licence plate hanger
2. Plastic finishers

⚠ WARNING

After fitting the accessory kit the motorcycle will exhibit new handling characteristics.

Operate the motorcycle in a safe area free from traffic to gain familiarity with any new characteristics.

Operation of the motorcycle when not familiar with any new handling characteristics may lead to loss of motorcycle control which could result in serious injury or death.

⚠ WARNING

If, after fitting this accessory kit, you have any doubt about the performance of any aspect of the motorcycle, contact a competent person with the specialist knowledge and technical understanding of motorcycles, such as an authorised Triumph dealer.

Riding a motorcycle when there is any doubt as to any aspect of the performance of the motorcycle may lead to loss of motorcycle control which could result in serious injury or death.

⚠ WARNING

Never ride an accessory-equipped motorcycle at speeds above 80 mph (130 km/h).

Remember that the 80 mph (130 km/h) limit will be reduced by the fitting of non-approved accessories, incorrect loading, worn tyres, overall motorcycle condition and poor road or weather conditions.

The presence of accessories will cause changes in the stability and handling of the motorcycle. Failure to allow for changes in motorcycle stability may lead to loss of motorcycle control which could result in serious injury or death.

⚠ WARNING

High-speed operation should only be attempted by riders who have been instructed in the techniques necessary for high-speed riding and are familiar with the motorcycle's characteristics in all conditions.

Only operate this Triumph motorcycle at high speed in closed-course, on-road competition or on closed-course racetracks.

High-speed operation in any other circumstances is dangerous and may lead to loss of motorcycle control which could result in serious injury or death.

NOTICE

The motorcycle must not be operated above the legal road speed limit except in closed-course conditions.