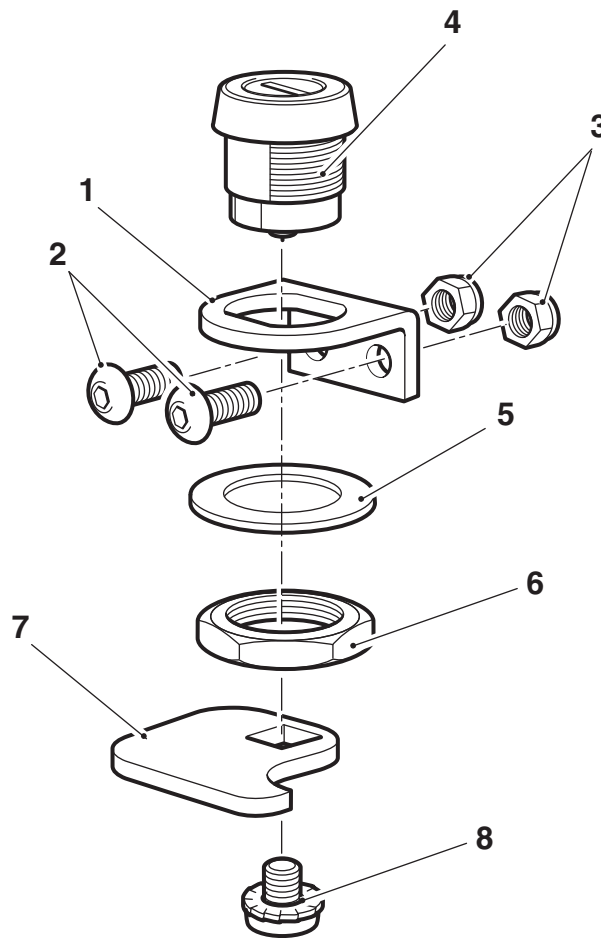


Fitting Instructions:
Bonneville and Bonneville T100
A9700761

Thank you for choosing this Triumph genuine accessory kit. This accessory kit is the product of Triumph's use of proven engineering, exhaustive testing, and continuous striving for superior reliability, safety and performance.

Completely read all of these instructions before commencing the installation of the accessory kit in order to become thoroughly familiar with the kit's features and the installation process.

These instructions should be considered a permanent part of your accessory kit, and should remain with it even if your accessory-equipped motorcycle is subsequently sold.



Parts Supplied:

1. Mounting bracket	1 off	5. Fibre washer	1 off
2. Screw, M5 x 12 mm	2 off	6. Nut, lock barrel	1 off
3. Nyloc nut, M5	2 off	7. Locking latch	1 off
4. Lock barrel	1 off	8. Screw, M6 x 6 mm	1 off

Warning

This accessory kit is designed for use on Triumph Bonneville and Bonneville T100 motorcycles only and should not be fitted to any other manufacturer's motorcycle. Fitting this accessory kit to any other manufacturer's motorcycle will affect the performance, stability and handling of the motorcycle. This may affect the rider's ability to control the motorcycle and could cause an accident.

Warning

Always have Triumph approved parts, accessories and conversions fitted by a trained technician of an authorised Triumph dealer. The fitment of parts, accessories and conversions by a technician who is not of an authorised Triumph dealer may affect the handling, stability or other aspects of the motorcycle's operation which may result in loss of motorcycle control and an accident.

Warning

Throughout this operation, ensure that the motorcycle is stabilised and adequately supported to prevent risk of injury from the motorcycle falling.

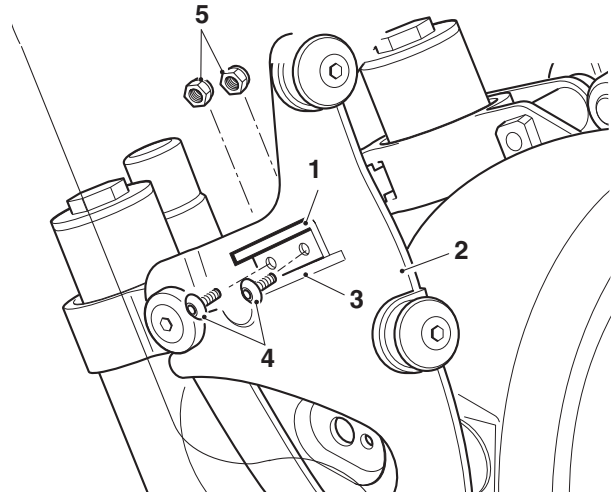
Warning

A torque wrench of known accurate calibration must be used when fitting this accessory kit. Failure to tighten any of the fasteners to the correct torque specification may result in loss of motorcycle control and an accident.

Note:

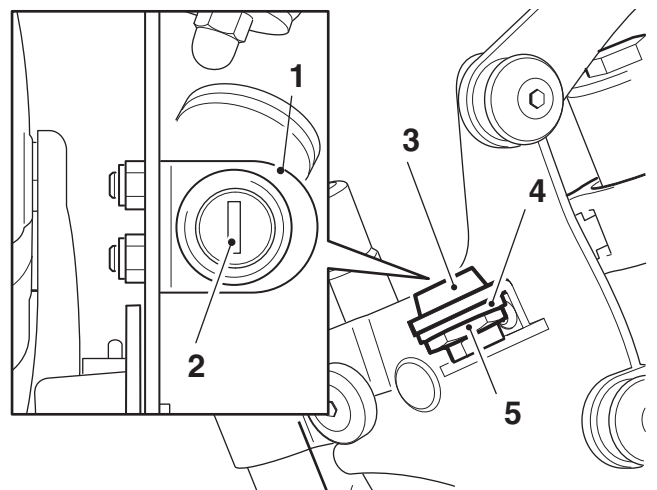
- **This lock kit must only be used with Triumph approved accessory quick release screen kits, A9708204, A9708205, A9708220 and A9708221.**

1. Align the mounting bracket with the slot and pre-drilled holes in the right hand screen bracket, in the orientation shown below. Secure with the M5 x 12 mm screws and M5 Nyloc nuts and tighten to **3.5 Nm**.



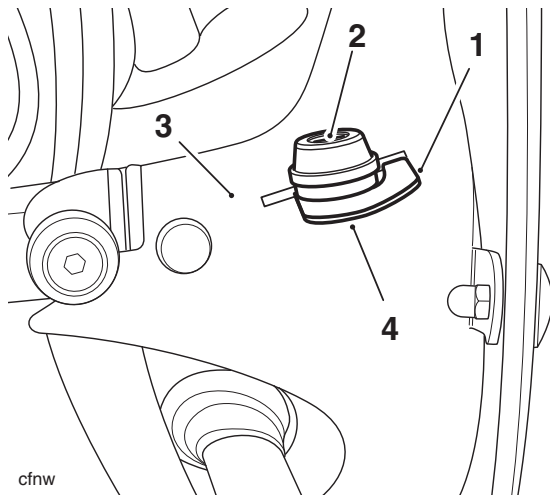
1. **Mounting bracket**
2. **Right hand screen bracket**
3. **Slot**
4. **Screw, M5 x 12 mm**
5. **Nyloc nut, M5**

2. Fit the lock barrel into the mounting bracket. Ensure that the key slot is parallel to the screen bracket, as shown below.
3. Fit the fibre washer to the lock barrel and apply Loctite 271 to the thread of the lock barrel retaining nut. Fit the nut and tighten to **7.5 Nm**.



1. **Mounting bracket**
2. **Key slot**
3. **Lock barrel**
4. **Fibre washer**
5. **Nut**

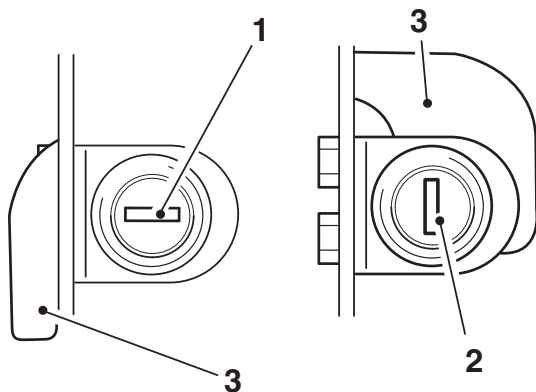
- Ensure that the key slot is parallel to the screen bracket, locate the locking latch onto the lock barrel in the unlocked position, as shown below. Apply Loctite 271 to the thread of the M6 x 6 mm screw. Fit and tighten the screw to **4 Nm**.



- Locking latch
- Lock barrel
- Screen bracket
- Screw, M6 x 6 mm

Lock operation

- From a locked position, insert the key and turn it 90° in a clockwise direction to the unlocked position. This will allow the screen latch to rotate downwards to release the screen.



- Locked position
- Unlocked position
- Locking latch

- From an unlocked position, insert the key into the lock barrel and turn it 90° in an anti-clockwise direction to the locked position.
- Always remove the key after the screen lock has been locked or unlocked.

- Instructions to fit and remove the quick release screen from the motorcycle are provided with the appropriate accessory quick release screen kit.

Warning

If, after fitment of this accessory kit, you have any doubt about the performance of any aspect of the motorcycle, contact an authorised Triumph dealer and do not ride the motorcycle until the authorised dealer has declared it fit for use. Riding a motorcycle when there is any doubt as to any aspect of the performance of the motorcycle may result in loss of control of the motorcycle leading to an accident.

Warning

Never ride an accessory-equipped motorcycle at speeds above 80 mph (130 km/h).

The presence of accessories will cause changes in the stability and handling of the motorcycle. Failure to allow for changes in motorcycle stability may lead to loss of control or an accident.

Remember that the 80 mph (130 km/h) limit will be reduced by the fitting of non-approved accessories, incorrect loading, worn tyres, overall motorcycle condition and poor road or weather conditions.

Warning

The motorcycle must not be operated above the legal road speed limit except in closed-course conditions.

Warning

Only operate this Triumph motorcycle at high speed in closed-course on road competition or on closed-course racetracks. High speed operation should only be attempted by riders who have been instructed in the techniques necessary for high speed riding and are familiar with the motorcycle's characteristics in all conditions.

High speed operation in any other circumstances is dangerous and will lead to loss of motorcycle control and an accident.