



Accessory Fitting Instructions

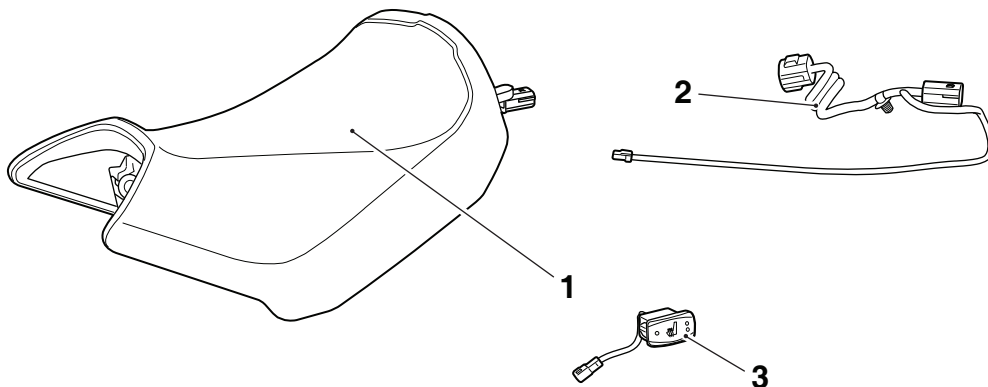
Heated Seat Kit - Rider	
Kit number	Models Affected
A9708366	Tiger Explorer XR, Tiger Explorer XR _x , Tiger Explorer XC, Tiger Explorer XC _x , Tiger 1200 XR
A9700610	Tiger 1200 XR _x , Tiger 1200 XC _x , Tiger 1200 XR _x LRH
Heated Seat Kit - Rider Low	
Kit number	Models Affected
A9708410	Tiger Explorer XR, Tiger Explorer XR _x , Tiger Explorer XR _T , Tiger Explorer XC, Tiger Explorer XC _x , Tiger Explorer XCA, Tiger 1200 XR
A9700612	Tiger 1200 XR _x , Tiger 1200 XC _x , Tiger 1200 XR _x LRH, Tiger 1200 XR _T , Tiger 1200 XCA
Heated Seat Kit - Passenger	
Kit number	Models Affected
A9708367	Tiger Explorer XR, Tiger Explorer XR _x , Tiger Explorer XC, Tiger Explorer XC _x , Tiger 1200 XR, Tiger 1200 XR _x , Tiger 1200 XC _x , Tiger 1200 XR _x LRH

Thank you for choosing this Triumph genuine accessory kit. This accessory kit is the product of Triumph's use of proven engineering, exhaustive testing, and continuous striving for superior reliability, safety and performance.

Completely read all of these instructions before commencing the installation of the accessory kit in order to become thoroughly familiar with the kit's features and the installation process.

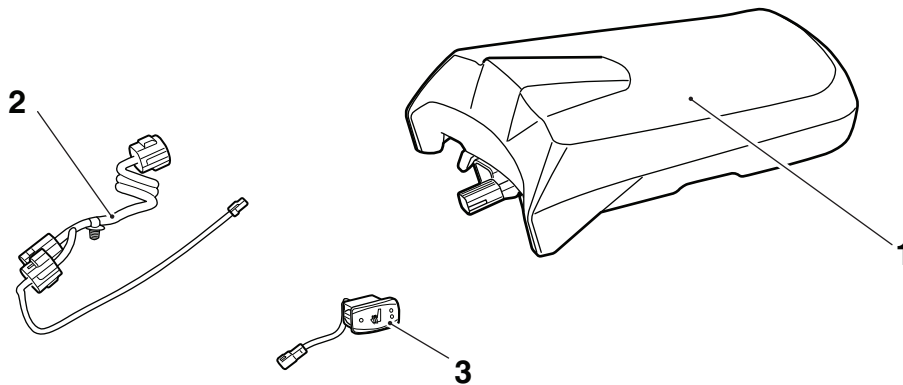
These instructions should be considered a permanent part of your accessory kit, and should remain with it even if your accessory equipped motorcycle is subsequently sold.

Parts supplied: A9708366, A9708410, A9700610, A9700612



1. Heated seat, rider and rider low	1 off	3. Switch, heated seat (A9708366, A9708410 only)	1 off
2. Harness, heated seat, rider (A9708366, A9708410 shown)	1 off		

Parts supplied: A9708367



1. Heated seat, passenger	1 off	3. Switch, heated seat	1 off
2. Harness, heated seat, passenger	1 off		

 **Warning**

The accessory kits covered in this instruction are designed for use on specific models of Triumph motorcycle. The accessory kits and the models applicable are listed at the start of the instruction. They should not be fitted to any other Triumph model or to any other manufacturer's motorcycle. Fitting an accessory kit to a Triumph model not listed, or to any other manufacturer's motorcycle will affect the performance, stability and handling of the motorcycle. This may affect the rider's ability to control the motorcycle and could cause an accident.

 **Warning**

Always have Triumph approved parts, accessories and conversions fitted by a trained technician of an authorised Triumph dealer. The fitment of parts, accessories and conversions by a technician who is not of an authorised Triumph dealer may affect the handling, stability or other aspects of the motorcycle's operation which may result in loss of motorcycle control and an accident.

 **Warning**

Throughout this operation, ensure that the motorcycle is stabilised and adequately supported to prevent risk of injury from the motorcycle falling.

 **Warning**

A torque wrench of known accurate calibration must be used when fitting this accessory kit. Failure to tighten any of the fasteners to the correct torque specification may affect motorcycle performance, handling and stability. This may result in loss of motorcycle control and an accident.

Note:

- **Triumph offers a broad range of approved genuine accessories for your motorcycle. We cannot therefore cover all possible equipment variations in these instructions. For removal and installation of Triumph Genuine Accessories, always refer to the instructions supplied with the respective accessory kit. To obtain additional copies of any Triumph accessory instructions, visit www.triumphinstructions.com or contact your authorised Triumph dealer.**

 **Warning**

Always ensure that the newly installed wiring does not chafe against other parts of the motorcycle such that it may be rubbed through and cause an electrical problem. In addition, always ensure that the newly installed wiring will not restrict steering movement. Both conditions are hazardous and could give rise to a dangerous riding condition resulting in a fire, loss of motorcycle control and an accident.

 **Caution**

If removing heated seats for any reason, always disconnect the heated seat harness. Do not allow the heated seats to hang freely on the sub-harness as this would result in irreparable damage to the heated seat.

 **Caution**

To prevent damage to the seats or seat covers care must be taken not to drop the seats. Do not lean the seats against the motorcycle or any surface which may damage the seats or seat covers. Always place the seats, with the seat cover facing upwards, on a clean flat surface which is covered with a soft cloth. Never place any item on the seats which may cause damage or staining to the seat covers.

1. Remove the seats as described in the Service Manual.
2. Remove the fuse cover as described in the Service Manual.
3. Disconnect the battery, negative (black) lead first.
4. Remove the battery as described in the Service Manual.

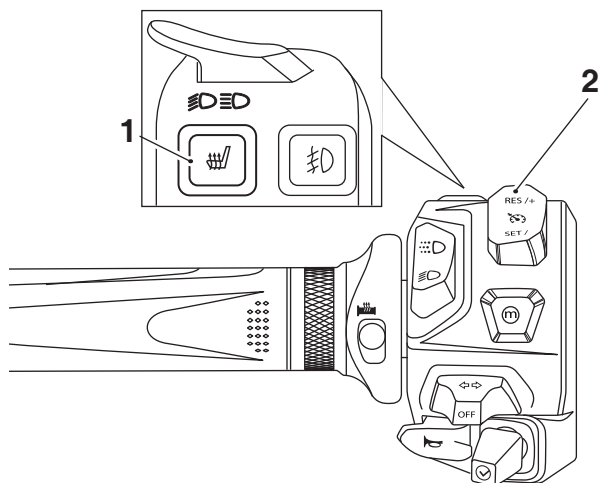
Note:

- **If fitting the heated rider's seat only, continue from Heated Rider Seat, then continue from Heated Seat Operation.**
- **If fitting the heated passenger seat only, continue from Heated Passenger Seat.**

Heated Rider Seat

Note:

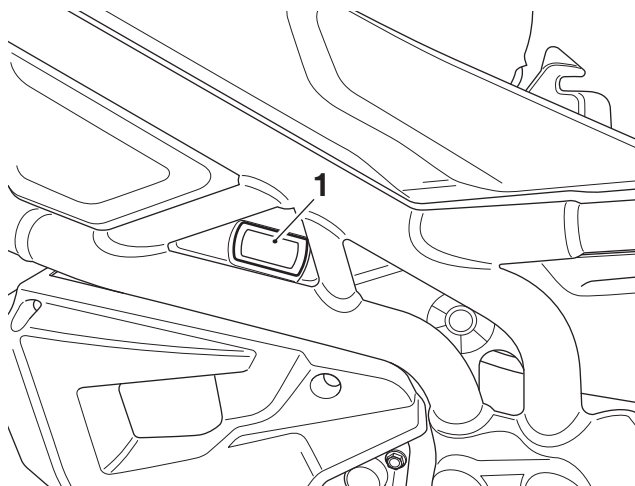
- For Tiger 1200 XR_x, Tiger 1200 XC_x, Tiger 1200 XR_x LRH, Tiger 1200 XR_T and Tiger 1200 XC_A models, the heated rider seat switch is incorporated into the left hand switch housing, as shown. Continue from step 6.



1. Heated seat switch, rider
2. Left hand switch housing

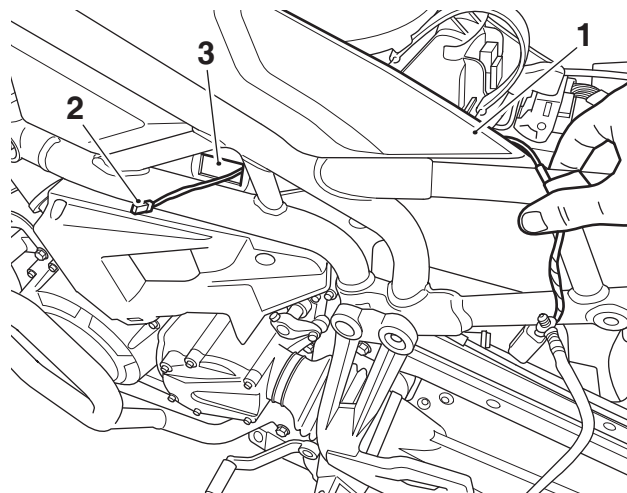
Tiger Explorer XR, Tiger Explorer XR_x, Tiger Explorer XC, Tiger Explorer XC_x, Tiger 1200 XR Only

1. Taking care not to damage the blanking plug or body panel, remove the heated rider seat switch blanking plug on the left hand side of the motorcycle. Retain the blanking plug for reuse if the motorcycle is to be returned to its original condition.

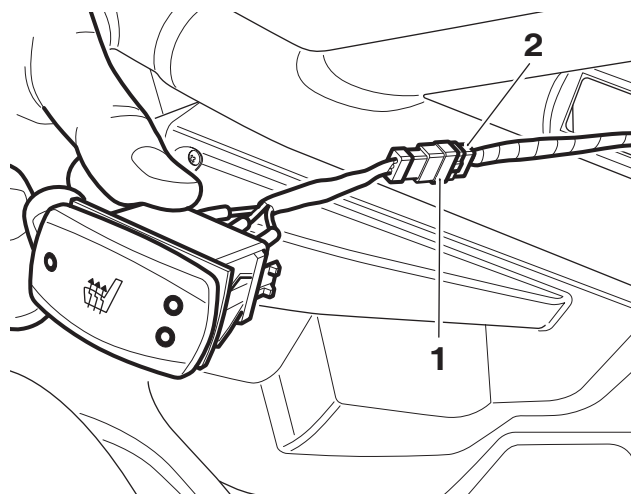


1. Switch blanking plug

2. Recover the sub-harness from the kit. Route the sub-harness switch electrical connector behind the body panel so the electrical connector passes through the aperture, as shown.

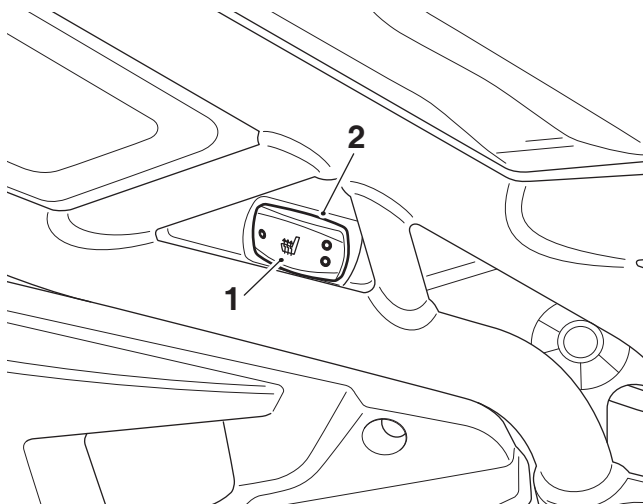


1. Body panel
2. Sub-harness switch electrical connector
3. Aperture
3. Collect the switch from the kit and connect the switch electrical connector to the sub-harness electrical connector.



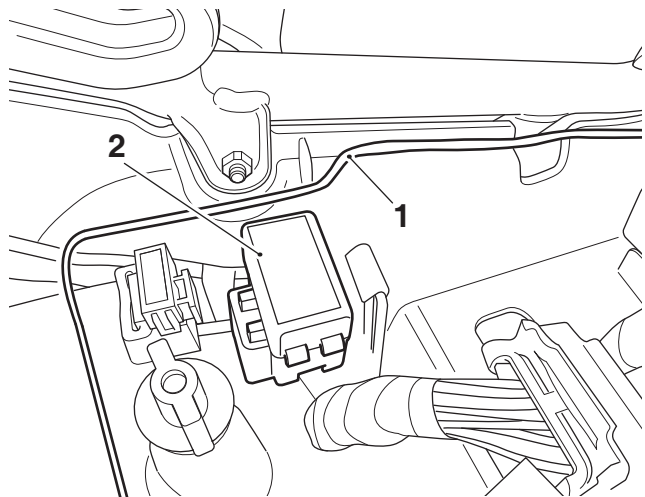
1. Switch electrical connector
2. Sub-harness electrical connector

- Fit the switch into the aperture, making sure the switch is in the correct orientation, as shown and the locking pegs are located fully.



- Switch
- Aperture

- Route the sub-harness along the left hand side of the motorcycle, then across the rear of the fuse box to the right hand side of the motorcycle.



- Sub-harness
- Fuse box

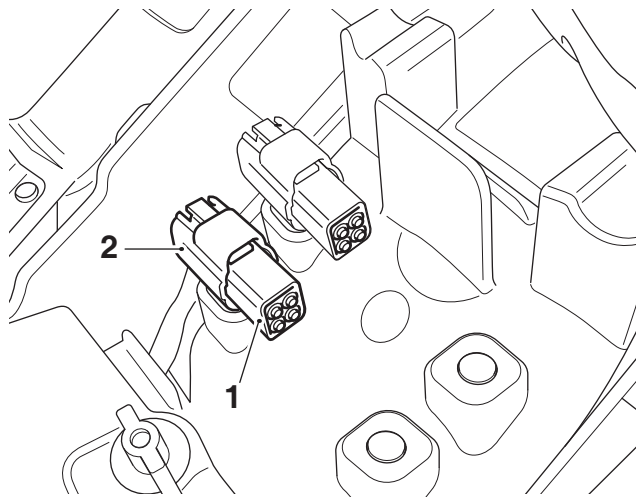


Caution

Blanking plugs are fitted to the harness electrical connectors to prevent water ingress. If the blanking plugs are removed for any reason, they should always be refitted. The harness electrical connectors should never be left exposed without the blanking plugs fitted as this may lead to a malfunction, or premature failure of components.

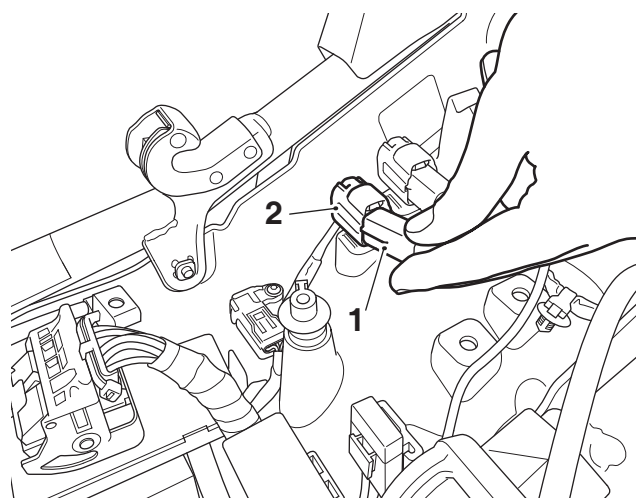
All Models

- Locate the main harness electrical connectors on the right hand side of the undertray. Remove the blanking plug from the rider seat main harness electrical connector. Retain the blanking plug for reuse if the motorcycle is to be returned to its original condition.



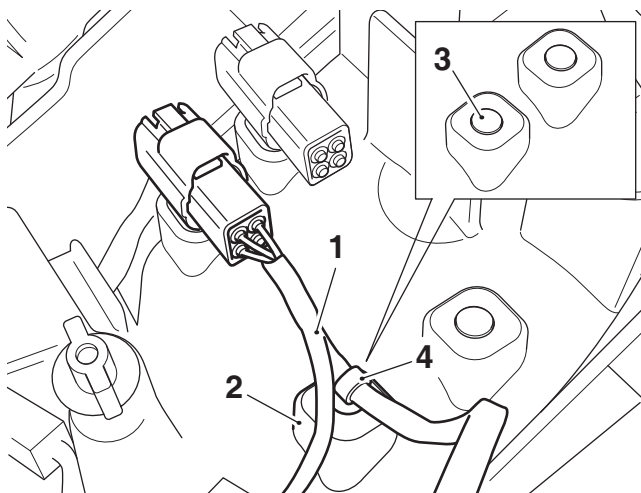
- Blanking plug (Tiger 1200 XR shown)
- Rider seat electrical connector (main harness)

- Connect the sub-harness electrical connector to the rider seat main harness electrical connector.



- Sub-harness electrical connector
- Rider seat electrical connector (main harness)

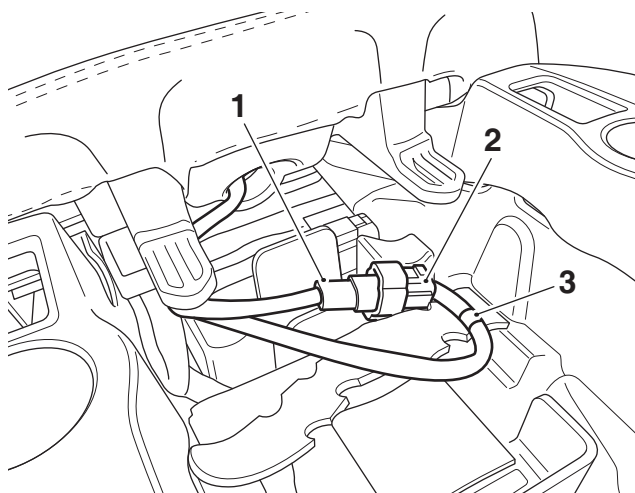
- Remove the blanking plug from the undertray and secure the sub-harness to the undertray with the fir tree clip. Retain the blanking plug for reuse if the motorcycle is to be returned to its original condition.



- Sub-harness (Tiger 1200 XR shown)
- Undertray
- Blanking plug
- Fir tree clip

Note:

- The sub-harness used in conjunction with the heated rider seat is identified by a band of grey tape.
- Recover the heated rider seat from the kit.
 - Connect the heated rider seat electrical connector to the sub-harness electrical connector, as shown below.



- Seat electrical connector
- Sub-harness electrical connector
- Grey Tape

- Refit the battery, as described in the Service Manual.
- Reconnect the battery, positive (red) lead first and tighten the battery terminals to **4.5 Nm**.
- Refit the fuse cover as described in the Service Manual.



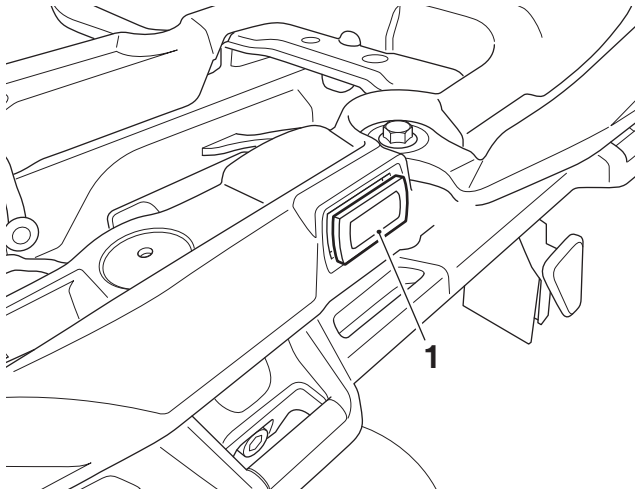
Caution

A wiring harness which becomes trapped or kinked during installation, or general motorcycle operation, may result in wiring harness damage and electrical malfunctions.

- Fit the seats as described in the Service Manual. Ensure that the harness for the heated seat does not become trapped between the seat and the frame.

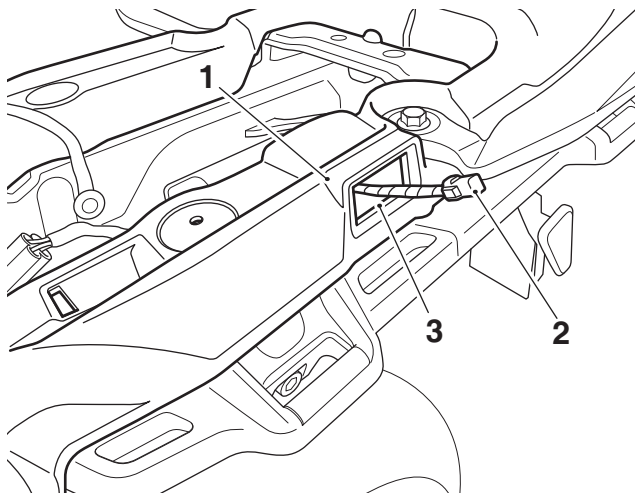
Heated Passenger Seat

1. Taking care not to damage the blanking plug or body panel, remove the heated passenger seat switch blanking plug on the left hand side of the motorcycle. Retain the blanking plug for reuse if the motorcycle is to be returned to its original condition.



1. Switch blanking plug

2. Collect the sub-harness from the kit. Route the sub-harness switch electrical connector between the undertray and body panel so the electrical connector passes through the aperture, as shown.



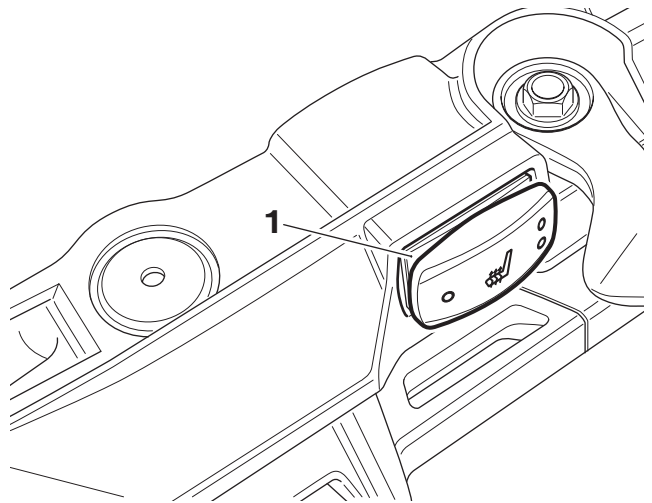
1. Body panel

2. Sub-harness switch electrical connector

3. Aperture

3. Collect the switch from the kit and connect the switch electrical connector to the sub-harness electrical connector.

4. Fit the switch into the aperture in the orientation shown, making sure the locking pegs are located fully.



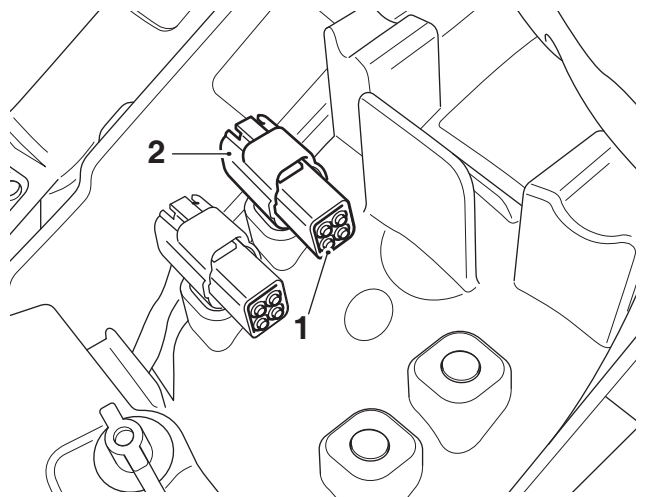
1. Switch



Caution

Blanking plugs are fitted to the harness electrical connectors to prevent water ingress. If the blanking plugs are removed for any reason, they should always be refitted. The harness electrical connectors should never be left exposed without the blanking plugs fitted as this may lead to a malfunction, or premature failure of components.

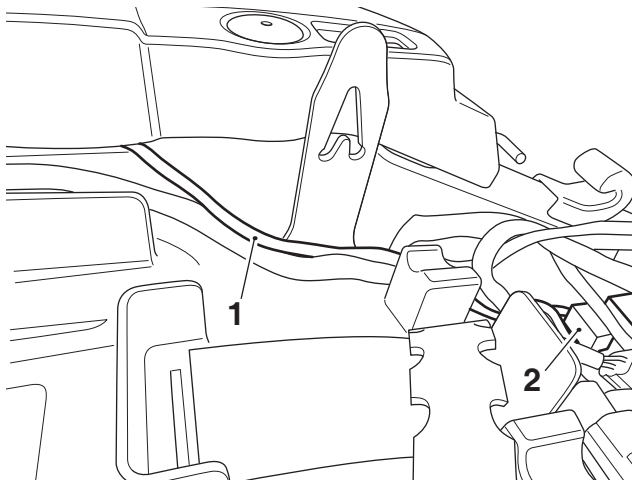
5. Locate the main harness electrical connectors on the right hand side of the undertray. Remove the blanking plug from the passenger seat main harness electrical connector. Retain the blanking plug for reuse if the motorcycle is to be returned to its original condition.



1. Blanking plug (Tiger 1200 XR shown)

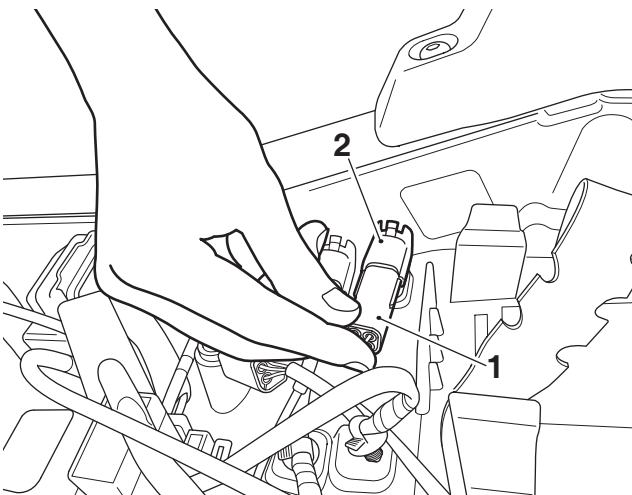
2. Passenger seat electrical connector (main harness)

- Route the sub-harness along the left hand side towards the front of the motorcycle and then across the rear of the fuse box to the right hand side of the motorcycle.



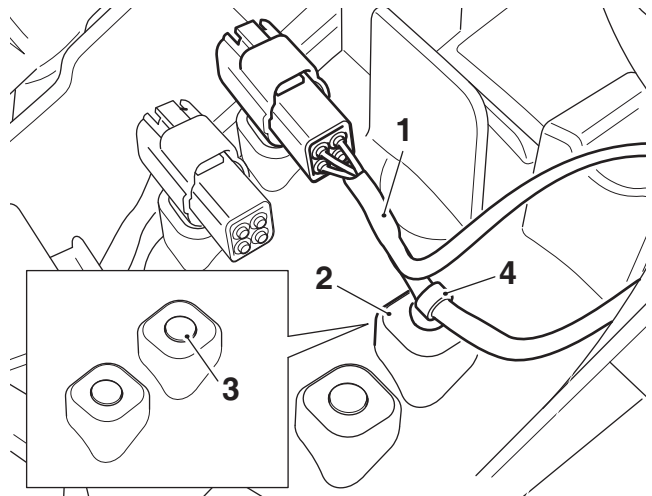
- Sub-harness
- Fuse box

- Connect the sub-harness to the passenger seat main harness electrical connector.



- Sub-harness electrical connector
- Passenger seat electrical connector (main harness)

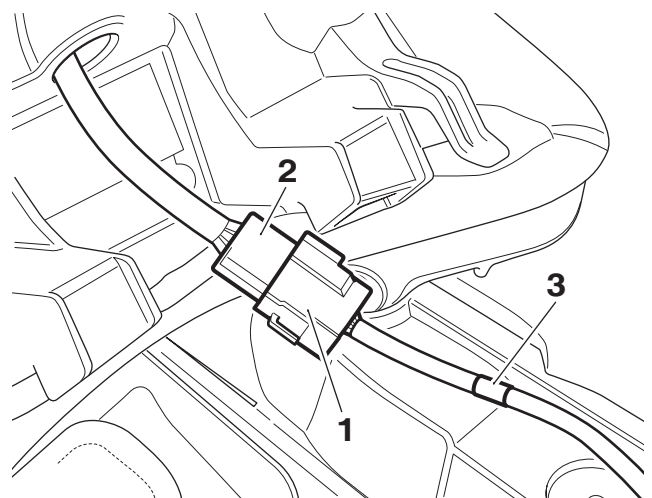
- Remove the blanking plug from the undertray and secure the sub-harness to the undertray with the fir tree clip. Retain the blanking plug for reuse if the motorcycle is to be returned to its original condition.



- Sub-harness (Tiger 1200 XR shown)
- Undertray
- Blanking plug
- Fir tree clip

Note:

- The sub-harness used in conjunction with the heated passenger seat is identified by a band of green tape.
- Recover the heated passenger seat from the kit.
 - Connect the passenger seat electrical connector to the sub-harness electrical connector, as shown below.



- Sub-harness electrical connector
- Passenger seat electrical connector
- Green tape

- Refit the battery, as described in the Service Manual.
- Reconnect the battery, positive (red) lead first and tighten the battery terminals to **4.5 Nm**.

- Refit the fuse cover as described in the Service Manual.

! Caution

A wiring harness which becomes trapped or kinked during installation, or general motorcycle operation, may result in wiring harness damage and electrical malfunctions.

- Refit the seats as described in the Service Manual. Ensure that the harness for the heated seat does not become trapped between the seat and the frame.

Heated Seat Operation

Note:

- The heated seats will only heat when the engine is running.
- The system is designed to offer a variable level of heat at the seats from warm to hot.

Heated Seat Kits A9708366, A9708410, A9708367 Only

Note:

- The heated seat is operated by the switch provided in the accessory kit.
- The heated seat switch has three operating modes as described below:
 - OFF - central position;
 - HOT - two dots (rocker switch depressed);
 - WARM - one dot (rocker switch depressed).

Heated Rider Seat Kits A97000610, A9700612 Only

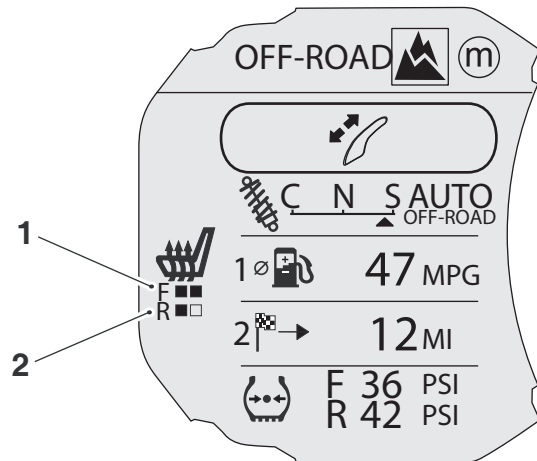
Note:

- The heated seat is operated by the switch incorporated into the left hand switch housing.
- The heated rider seat switch has two operating modes as described below:
 - HOT - From the OFF position, press the rider heated seat switch once.
 - WARM - From the HOT position, press the rider heated seat switch once.
 - OFF - From the WARM position, press the rider heated seat switch once.

All Heated Seat Kits

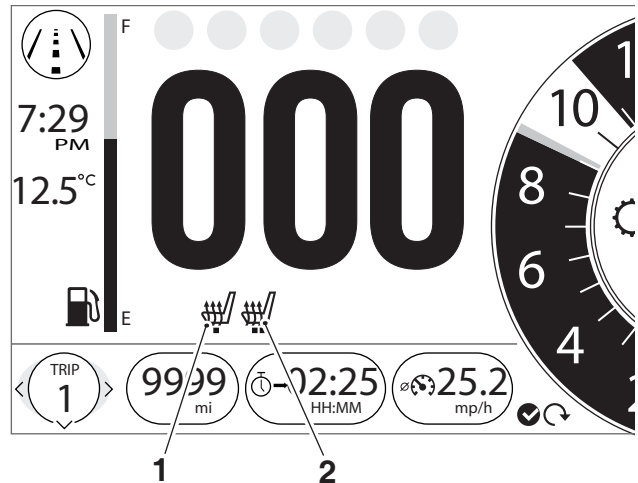
When the heated seats are switched on, the heated seats symbol will appear in the multifunction display and the selected heat level for each seat will be displayed, as shown below. When the heated seats are switched off, after a short delay, the heated seats symbol will disappear from the multifunction display.

Tiger Explorer XR, Tiger Explorer XRx, Tiger Explorer XC, Tiger Explorer XCx, Tiger 1200 XR Models



- Heated rider seat (hot selected)
- Heated passenger seat (warm selected)

Tiger 1200 XRx, Tiger 1200 XRx LRH, Tiger 1200 XCx, Tiger 1200 XRt, Tiger 1200 XCa Models



- Heated rider seat (warm selected), illuminated Amber
- Heated passenger seat (hot selected), illuminated Red

All Models

For maximum benefit in cold conditions, switch the heated seats to the hot setting initially and then reduce the heat level by switching to the warm setting when the seat has warmed up.

The heated seats are protected by a chassis ECM which will automatically cut power in the event of an overload.

Power can be restored to the heated seats by turning the ignition switch off, then on again, provided that the condition that caused the fault has been rectified.

In the event of a more serious overload, fuse number PS 4 protects the heated seats. Refer to the label in the fuse box lid for fuse amperage.

Low Power Voltage Cut Off

If a low voltage is detected the heated seats switches will power off. The heated seats will not function again until the voltage rises to a safe level.

The switch will not power back on automatically even if the voltage rises to the safe level. The ignition must be switched off then on again to activate the heated seats.

Heated Seat System Testing

Note:

- **The heated seats will only heat when the engine is running.**
1. Operate the switch in all positions and check that the heated seat/s warm up and switch off as required.

Warning

After fitting the accessory kit the motorcycle will exhibit new handling characteristics. Operate the motorcycle in a safe area free from traffic to gain familiarity with any new characteristics. Operation of the motorcycle when not familiar with any new handling characteristics may result in loss of motorcycle control and an accident.

Warning

If, after fitment of this accessory kit, you have any doubt about the performance of any aspect of the motorcycle, contact an authorised Triumph dealer and do not ride the motorcycle until the authorised dealer has declared it fit for use. Riding a motorcycle when there is any doubt as to any aspect of the performance of the motorcycle may result in loss of motorcycle control and an accident.

Warning

Never ride an accessory equipped motorcycle at speeds above 80 mph (130 km/h).

The presence of accessories will cause changes in the stability and handling of the motorcycle. Failure to allow for changes in motorcycle stability may result in loss of motorcycle control and an accident.

Remember that the 80 mph (130 km/h) limit will be reduced by the fitting of non-approved accessories, incorrect loading, worn tyres, overall motorcycle condition and poor road or weather conditions.

Warning

The motorcycle must not be operated above the legal road speed limit except in closed-course conditions.

Warning

Only operate this Triumph motorcycle at high speed in closed-course, on-road competition or on closed-course racetracks. High-speed operation should only be attempted by riders who have been instructed in the techniques necessary for high-speed riding and are familiar with the motorcycle's characteristics in all conditions.

High-speed operation in any other circumstances is dangerous and may result in loss of motorcycle control and an accident.