



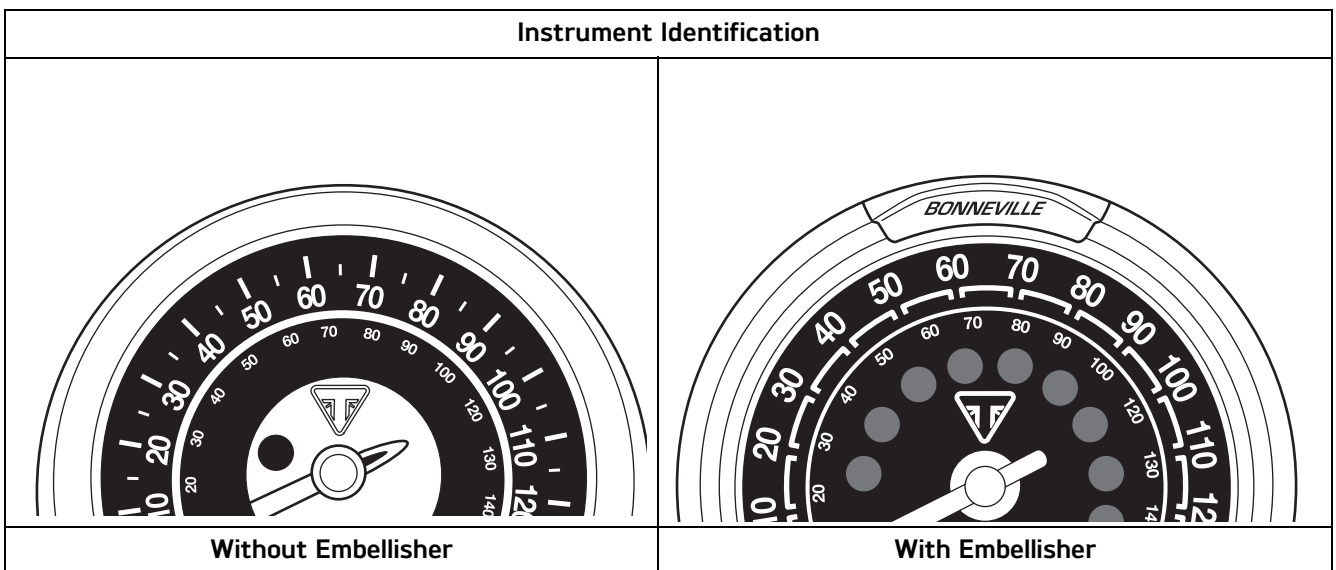
## Accessory Fitting Instructions

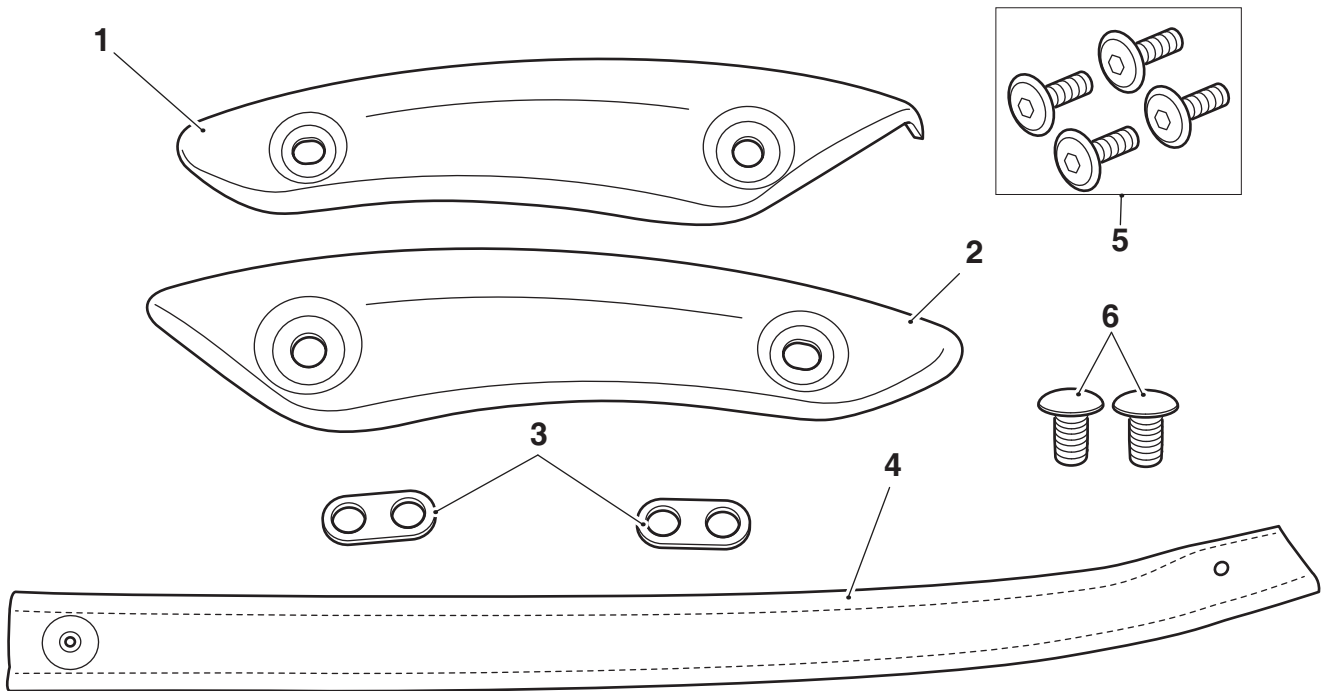
Fender Rail Removal Kit	
Kit Number	Models Affected
A9700593	Bonneville Speedmaster from VIN 739143 up to VIN AE2305 without instrument embellisher (see below)
A9700503	Bonneville Speedmaster from VIN AC1201 with instrument embellisher (see below)

Thank you for choosing this Triumph genuine accessory kit. This accessory kit is the product of Triumph's use of proven engineering, exhaustive testing, and continuous striving for superior reliability, safety and performance.

Completely read all of these instructions before commencing the installation of the accessory kit in order to become thoroughly familiar with the kit's features and the installation process.

These instructions should be considered a permanent part of your accessory kit, and should remain with it even if your accessory equipped motorcycle is subsequently sold.





1. Finisher, right hand	1 off	4. Seat strap	1 off
2. Finisher, left hand	1 off	5. Fixing, M6 x 18 mm (encapsulated)	4 off
3. Spacer	2 off	6. Plastic plug	2 off

**Warning**

Fit only genuine Triumph accessories to those models approved by Triumph as listed in the associated Triumph fitting instructions. The accessory kits covered in this instruction are designed for use on specific models of Triumph motorcycle. The accessory kits and the models applicable are listed at the start of the instruction. They should never be fitted to any other Triumph model or to any other manufacturer's motorcycle. Fitting an accessory kit to a Triumph model not listed, or to any other manufacturer's motorcycle will affect the performance, stability and handling of the motorcycle. This may affect the rider's ability to control the motorcycle and could result in an accident causing severe injuries or death.

**Warning**

Always have Triumph approved parts, accessories and conversions fitted by a trained technician of an authorised Triumph dealer. The fitment of parts, accessories and conversions by a technician who is not of an authorised Triumph dealer may affect the handling, stability or other aspects of the motorcycle's operation which may result in loss of motorcycle control and an accident.

**Warning**

Make sure the motorcycle is supported. A correctly supported motorcycle will help prevent it from falling. An unstable motorcycle may fall, causing injury to the operator or damage to the motorcycle.



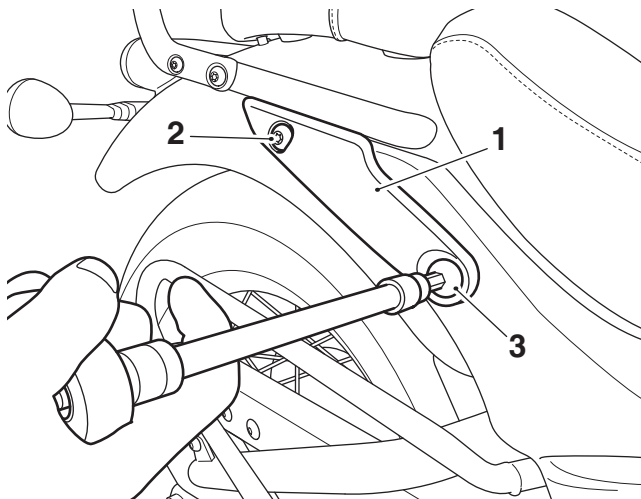
## Warning

A torque wrench of known accurate calibration must be used when fitting this accessory kit. Failure to tighten any of the fasteners to the correct torque specification may affect motorcycle performance, handling and stability. This may result in loss of motorcycle control and an accident.

### Note:

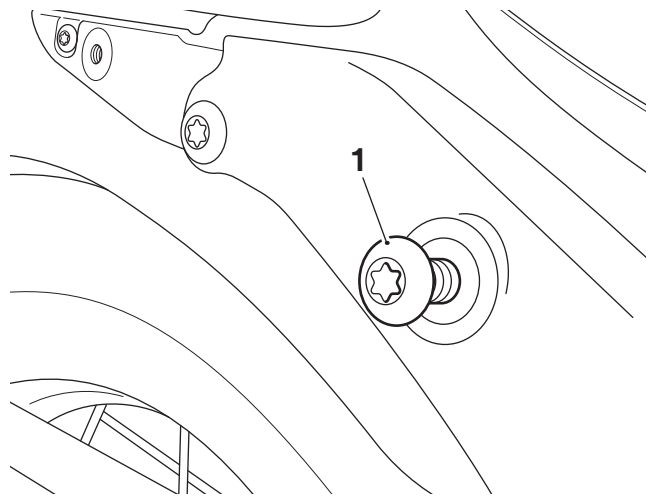
- Triumph offers a broad range of approved genuine accessories for your motorcycle. We cannot therefore cover all possible equipment variations in these instructions. For removal and installation of Triumph Genuine Accessories, always refer to the instructions supplied with the respective accessory kit. To obtain additional copies of any Triumph accessory instructions, visit [www.triumphinstructions.com](http://www.triumphinstructions.com) or contact your authorised Triumph dealer.

- Remove the rider and passenger seats as described in the Service Manual.
- Remove the M8 and M10 fixings retaining the fender rail finisher on the right hand side of the motorcycle. Retain the fixings for reuse. Retain the finisher for reuse if the motorcycle is to be returned to its original condition.



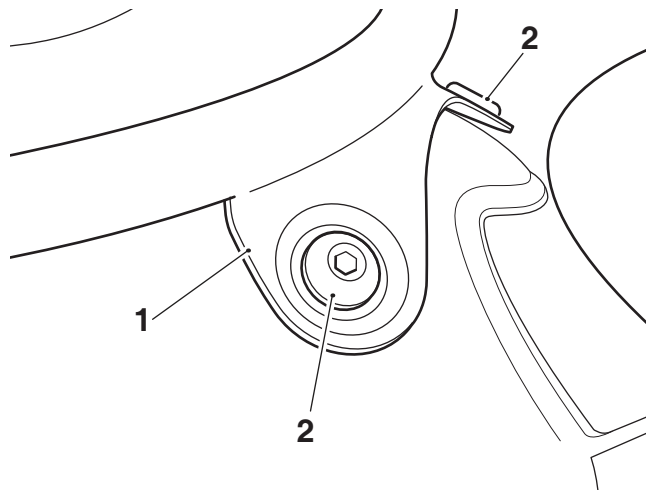
- Finisher
- Fixing, M8
- Fixing, M10

- Refit the M10 fixing to support the rear mudguard during the fender rail removal. Do not fully tighten the fixing.



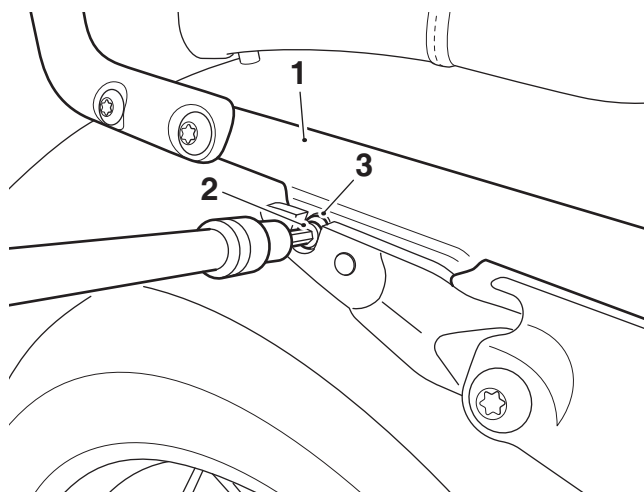
### 1. Fixing, M10

- Repeat steps 2 and 3 for the left hand side of the motorcycle.
- Remove the fender rail rear fixings. Retain the fixings for reuse if the motorcycle is to be returned to its original condition.



- Fender rail
- Fixings

- Remove the fender rail cap head fixings and flanged collars from the left hand and right hand side of the motorcycle. Retain the fixings and flanged collars for reuse.

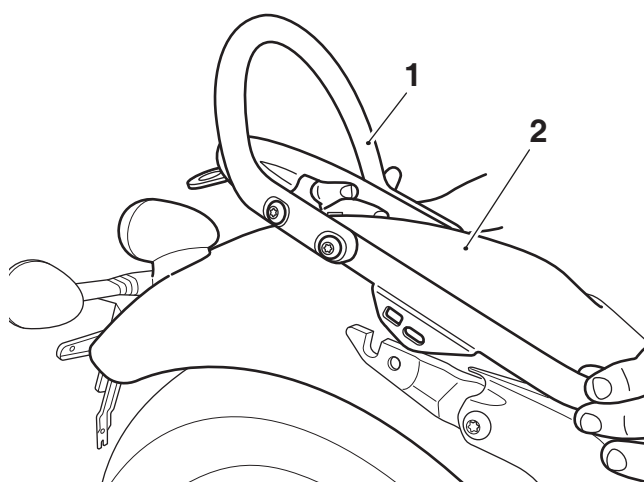


- Fender rail
- Cap head fixing, right hand shown
- Flanged collar

**! Caution**

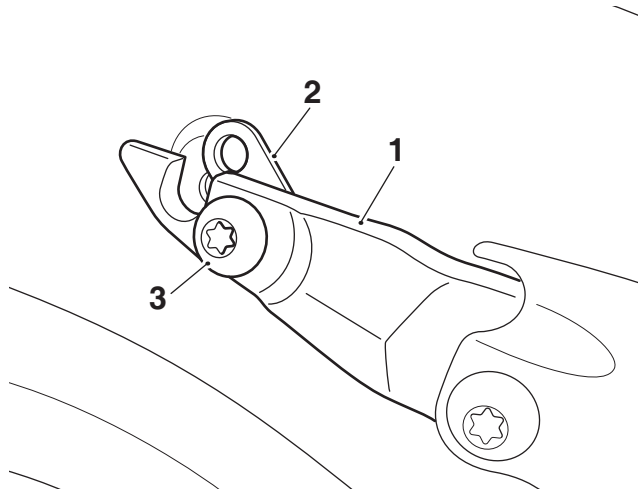
Care should be taken to ensure the fender rail does not contact any part of the rear mudguard when it is removed from the motorcycle. If the fender rail is allowed to contact the rear mudguard it could result in damage to the paintwork.

- Carefully remove the fender rail from the motorcycle. Retain the fender rail for reuse if the motorcycle is to be returned to its original condition.



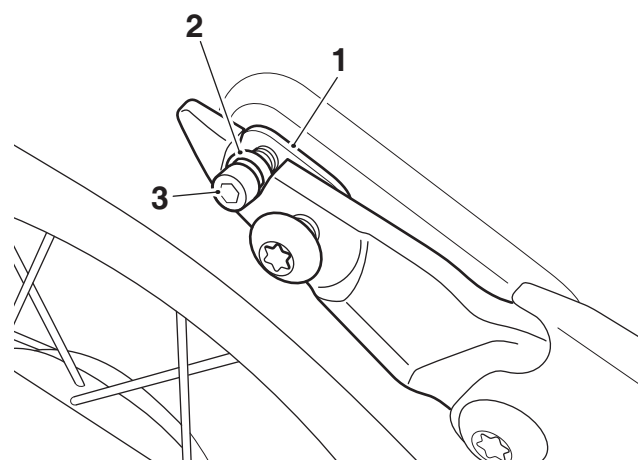
- Fender rail
- Rear mudguard

- Position a spacer from the kit behind the right hand side fender rail mounting bracket on the motorcycle frame. Align the spacer with the M8 fixing position, as shown. Loosely fit the original M8 fixing.



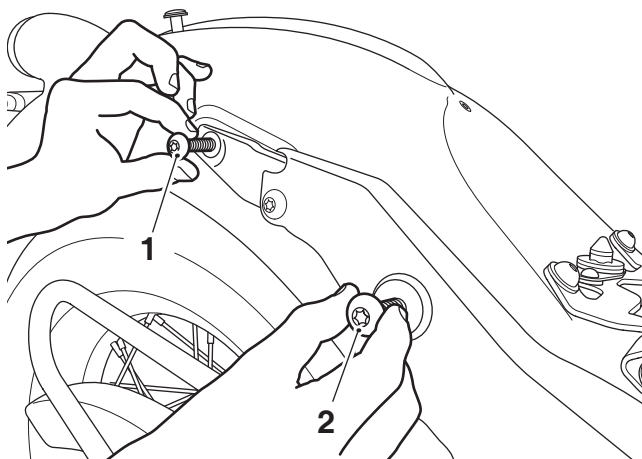
- Fender rail mounting bracket
- Spacer
- Fixing, M8

- Align the spacer with the cap head fixing position. Fit the original cap head fixing and flanged collar, as shown. Tighten the fixing to **9 Nm**.



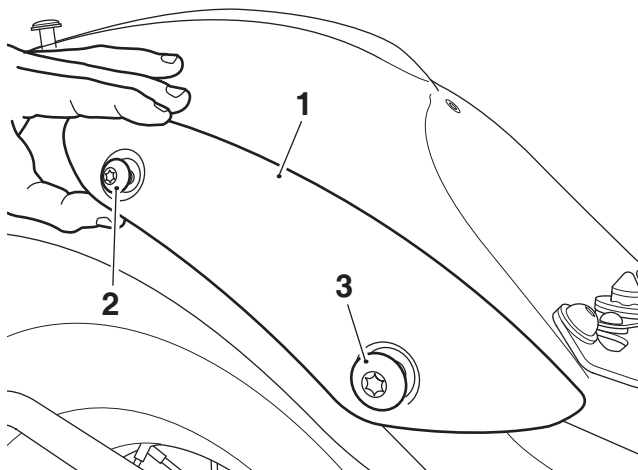
- Spacer
- Flanged collar
- Fixing, cap head

10. Remove the M8 and M10 fixings.



- 1. Fixing, M8
- 2. Fixing, M10

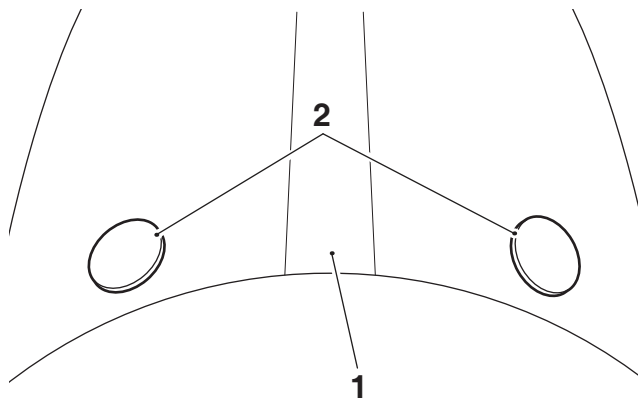
11. Position the right hand finisher from the kit on to the motorcycle in the orientation shown. Fit the original M8 and M10 fixings. Tighten the M8 fixing to **24 Nm**, tighten the M10 fixing to **45 Nm**.



- 1. Finisher
- 2. Fixing, M8
- 3. Fixing, M10

12. Repeat steps 8 to 11 for the left hand side.

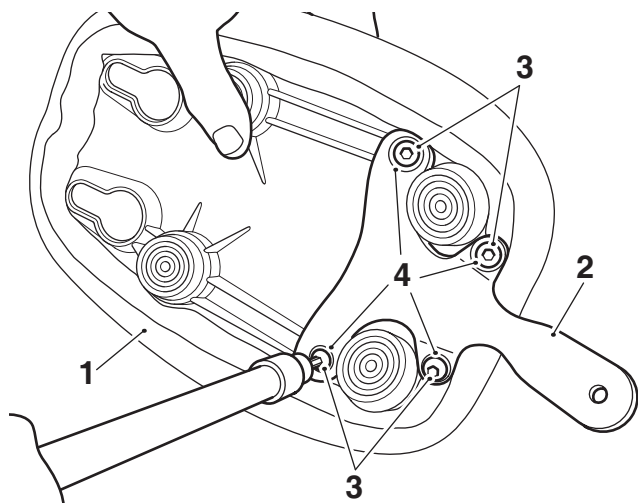
13. Fit the two plastic plugs from the kit through the rear mudguard as shown.



- 1. Rear mudguard
- 2. Plastic plugs

### Passenger Seat Strap

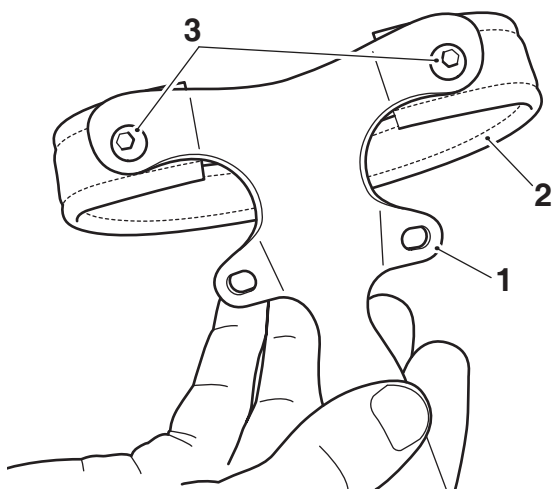
14. Remove the four fixings and washers securing the seat mounting plate to the passenger seat base. Discard the fixings and washers.



- 1. Passenger seat
- 2. Mounting plate
- 3. Fixings
- 4. Washers

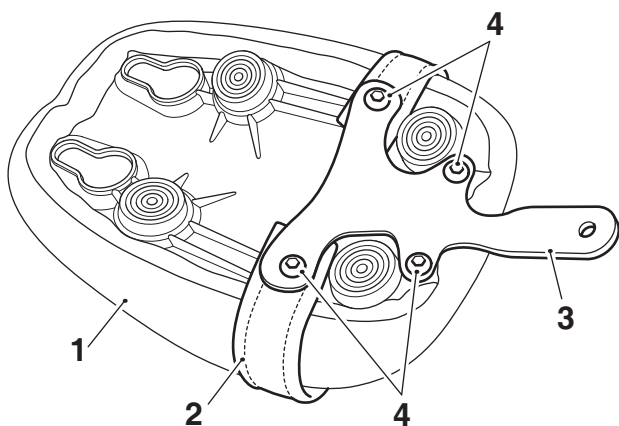
15. Collect the seat strap and M6 x 18 mm fixings from the kit.

16. Position the seat strap to the underside of the passenger seat mounting plate and fit two of the M6 x 18 mm fixings from the kit through the mounting plate and seat strap to hold the seat strap in position, as shown below.



- 1. Passenger seat mounting plate
- 2. Seat strap
- 3. Fixings, M6 x 18 mm

17. Carefully slide the seat strap over the front of the passenger seat in the orientation shown below. Align the passenger seat mounting plate with the mounting holes in the seat base. Loosely fit the two M6 x 18 mm fixings from the kit to retain the seat strap. Fit the remaining two M6 x 18 mm fixings from the kit. Tighten all fixings to **5 Nm**.



- 1. Passenger seat
- 2. Seat strap
- 3. Passenger seat mounting plate
- 4. Fixings, M6 x 18 mm

18. Refit the passenger and rider seats as described in the Service Manual.

### Warning

If, after fitting this accessory kit, you have any doubt about the performance of any aspect of the motorcycle, contact an authorised Triumph dealer and do not ride the motorcycle until the authorised dealer has declared it fit for use. Riding a motorcycle when there is any doubt as to any aspect of the performance of the motorcycle may result in loss of motorcycle control and an accident.

### Warning

Never ride an accessory-equipped motorcycle at speeds above 80 mph (130 km/h).

The presence of accessories will cause changes in the stability and handling of the motorcycle. Failure to allow for changes in motorcycle stability may result in loss of motorcycle control and an accident.

Remember that the 80 mph (130 km/h) limit will be reduced by the fitting of non-approved accessories, incorrect loading, worn tyres, overall motorcycle condition and poor road or weather conditions.

### Warning

The motorcycle must not be operated above the legal road speed limit except in closed-course conditions.

### Warning

Only operate this Triumph motorcycle at high speed in closed-course, on-road competition or on closed-course racetracks. High-speed operation should only be attempted by riders who have been instructed in the techniques necessary for high speed riding and are familiar with the motorcycle's characteristics in all conditions.

High-speed operation in any other circumstances is dangerous and may result in loss of motorcycle control and an accident.