

Accessory Fitting Instructions

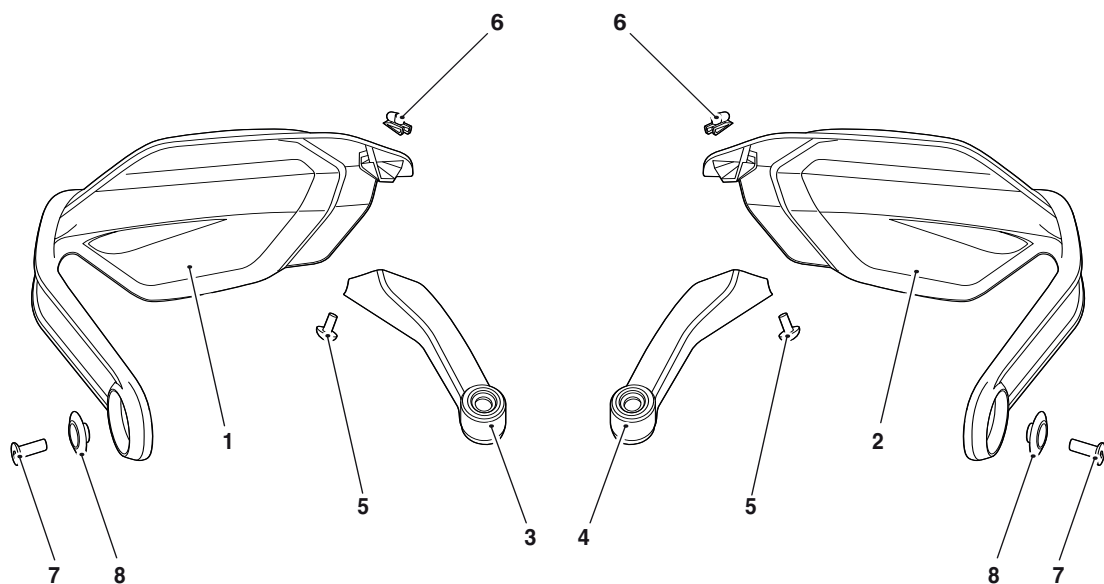
Handguard Kit	
Kit Number	Models Affected
A9700530 A9700531	Tiger 850 Sport

Thank you for choosing this Triumph genuine accessory kit. This accessory kit is the product of Triumph's use of proven engineering, exhaustive testing, and continuous striving for superior reliability, safety and performance.

Completely read all of these instructions before commencing the installation of the accessory kit in order to become thoroughly familiar with the kit's features and the installation process.

These instructions should be considered a permanent part of your accessory kit, and should remain with it even if your accessory equipped motorcycle is subsequently sold.

Parts supplied



1. Handguard, left hand	1 off	5. Fixing, M5 x 10 mm	2 off
2. Handguard, right hand	1 off	6. Captive Nut	2 off
3. Bracket, left hand	1 off	7. Fixing, M6 x 20 mm	2 off
4. Bracket, right hand	1 off	8. Handlebar Finisher	2 off

Warning

Fit only genuine Triumph accessories to those models approved by Triumph as listed in the associated Triumph fitting instructions. The accessory kits covered in this instruction are designed for use on specific models of Triumph motorcycle. The accessory kits and the models applicable are listed at the start of the instruction. They should never be fitted to any other Triumph model or to any other manufacturer's motorcycle. Fitting an accessory kit to a Triumph model not listed, or to any other manufacturer's motorcycle will affect the performance, stability and handling of the motorcycle. This may affect the rider's ability to control the motorcycle and could result in an accident causing severe injuries or death.

Warning

Always have Triumph approved parts, accessories and conversions fitted by a trained technician of an authorised Triumph dealer. The fitment of parts, accessories and conversions by a technician who is not of an authorised Triumph dealer may affect the handling, stability or other aspects of the motorcycle's operation which may result in loss of motorcycle control and an accident.

Warning

Throughout this operation, ensure that the motorcycle is stabilised and adequately supported to prevent risk of injury from the motorcycle falling.

Warning

A torque wrench of known accurate calibration must be used when fitting this accessory kit. Failure to tighten any of the fasteners to the correct torque specification may affect motorcycle performance, handling and stability. This may result in loss of motorcycle control and an accident.

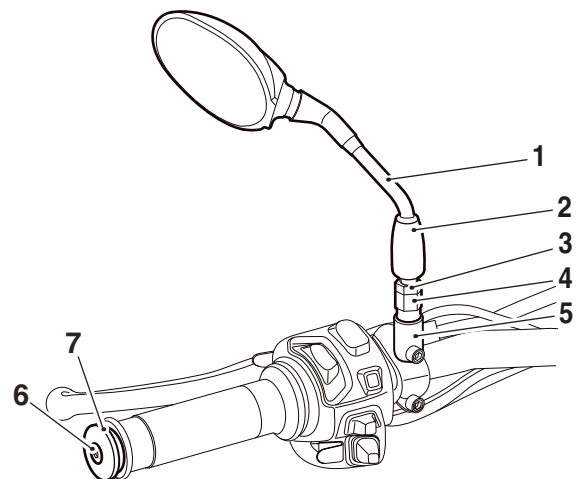
Note:

- Triumph offers a broad range of approved genuine accessories for your motorcycle. We cannot therefore cover all possible equipment variations in these instructions. For removal and installation of Triumph Genuine Accessories, always refer to the instructions supplied with the respective accessory kit. To obtain additional copies of any Triumph accessory instructions, visit www.triumphinstructions.com or contact your authorised Triumph dealer.

- Undo and remove the mirror. Slide the rubber cover up from the lock nut. Make a note of the lock nut position on the thread of the mirror arm. Loosen the lock nut and loosen the mirror boss and separate from the mirror housing. Left hand shown.

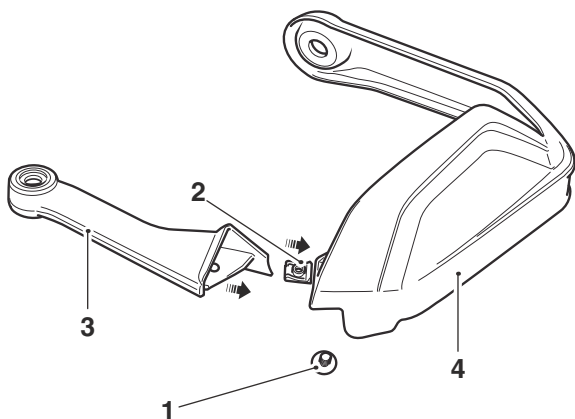
Note:

- The left hand mirror arm and lock nut has a right hand thread.
 - The right hand mirror arm and lock nut has a left hand thread.
- Undo and remove the handlebar end fixing and handlebar end weight. Discard the handlebar end fixing. Retain the handlebar end weight for reuse if the motorcycle is to be returned to its original condition. Left hand shown.



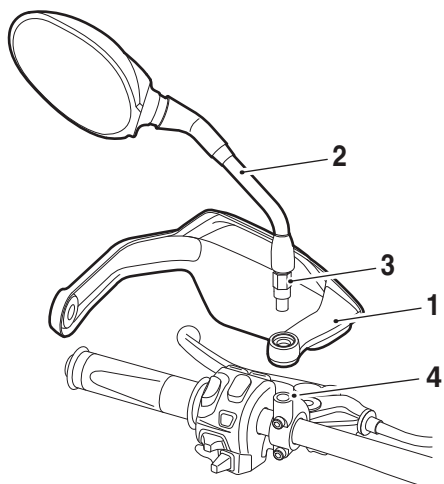
- Mirror arm
- Rubber cover
- Lock nut
- Mirror boss
- Mirror housing
- Handlebar end fixing
- Handlebar end weight

- Repeat steps 1-2 for the right hand side mirror and handlebar end weight.
- Assemble the handguard bracket to the handguard using the captive nut and M5 fixing. Tighten to **5 Nm**. Left hand shown.



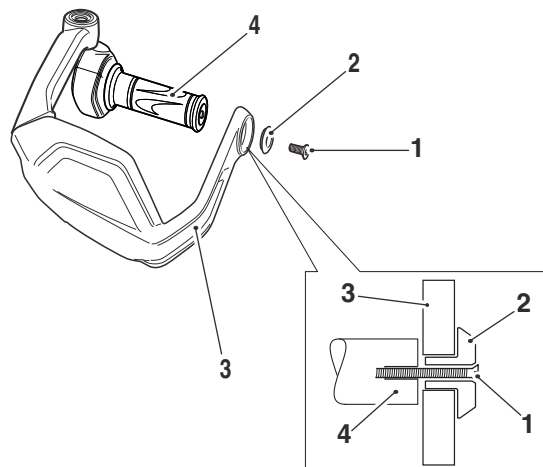
- Fixing
- Captive nut
- Handguard bracket
- Handguard

- Fit the handguard assembly to the handlebar. Fit the mirror boss through the handguard to the mirror housing. Do not fully tighten the mirror boss. Left hand shown.



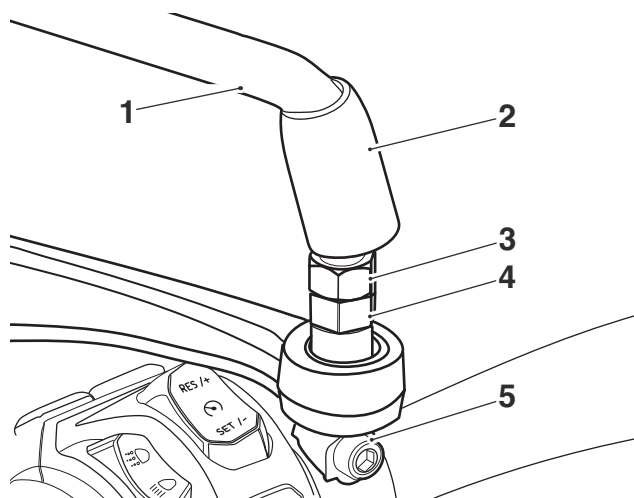
- Handguard assembly
- Mirror arm
- Mirror boss
- Mirror housing

- Position the handlebar finisher and the handguard assembly to the handlebar. Tighten the new handlebar end fixing to **6 Nm**. Left hand shown.



- Handlebar end fixing
- Handlebar finisher
- Handguard
- Handlebar

- Repeat steps 4-6 for the right hand side handguard.
- To reinstall the mirror, position the lock nut as noted during removal onto the thread of the mirror arm. Left hand shown.
- Fit the mirror boss to the mirror housing and tighten to **25 Nm**.



- Mirror arm
- Rubber cover
- Lock nut
- Mirror boss
- Mirror housing

10. Fit the mirror arm into the mirror boss. Tighten by hand until the lock nut makes contact with the mirror boss. Do not tighten fully at this stage.
11. Loosen the mirror arm one full turn.
12. Position the mirror arm to give rear visibility in the riding position and tighten the lock nut by hand.



Caution

Use an open ended spanner to counter-hold the mirror housing as the mirror lock nut is tightened. Failure to counter-hold the housing will cause damage to the thread and the mirror to become loose.

13. Counter-hold the mirror boss and tighten the mirror lock nut to **25 Nm**.
14. Slide the rubber cover over the lock nut.
15. Repeat steps 8-14 for the right hand side mirror.



Warning

It is dangerous to operate the motorcycle with defective brakes; you must have your authorised Triumph dealer take remedial action. Failure to take remedial action will reduce braking efficiency which may result in loss of motorcycle control and an accident.

16. Check that both the clutch and brake lever operate correctly and are not restricted by the handguards.
17. Check for correct operation of the brake light.



Warning

Riding a motorcycle when there is any doubt as to any aspect of the performance of the throttle operation may result in loss of motorcycle control and an accident.

18. Check the operation of the throttle twist grip and make sure that its operation is not restricted in any way by the handguard.
19. Carry out a cruise control switch check, as described in the Service Manual.



Warning

Move the handlebars to left and right full lock while checking that the handguards do not restrict full lock operation. Check cables or harnesses do not bind or restrict full lock operation. Any component, cables or harnesses that will restrict the steering may result in loss of motorcycle control and an accident.



Warning

After fitting the accessory kit the motorcycle will exhibit new handling characteristics. Operate the motorcycle in a safe area free from traffic to gain familiarity with any new characteristics. Operation of the motorcycle when not familiar with any new handling characteristics may result in loss of motorcycle control and an accident.



Warning

If, after fitment of this accessory kit, you have any doubt about the performance of any aspect of the motorcycle, contact an authorised Triumph dealer and do not ride the motorcycle until the authorised dealer has declared it fit for use. Riding a motorcycle when there is any doubt as to any aspect of the performance of the motorcycle may result in loss of motorcycle control and an accident.



Warning

Never ride an accessory-equipped motorcycle at speeds above 80 mph (130 km/h).

The presence of accessories will cause changes in the stability and handling of the motorcycle. Failure to allow for changes in motorcycle stability may result in loss of motorcycle control and an accident.

Remember that the 80 mph (130 km/h) limit will be reduced by the fitting of non-approved accessories, incorrect loading, worn tyres, overall motorcycle condition and poor road or weather conditions.



Warning

Only operate this Triumph motorcycle at high speed in closed-course, on-road competition or on closed-course racetracks. High-speed operation should only be attempted by riders who have been instructed in the techniques necessary for high-speed riding and are familiar with the motorcycle's characteristics in all conditions.

High-speed operation in any other circumstances is dangerous and may result in loss of motorcycle control and an accident.



Warning

The motorcycle must not be operated above the legal road speed limit except in closed-course conditions.