



Accessory Fitting Instructions

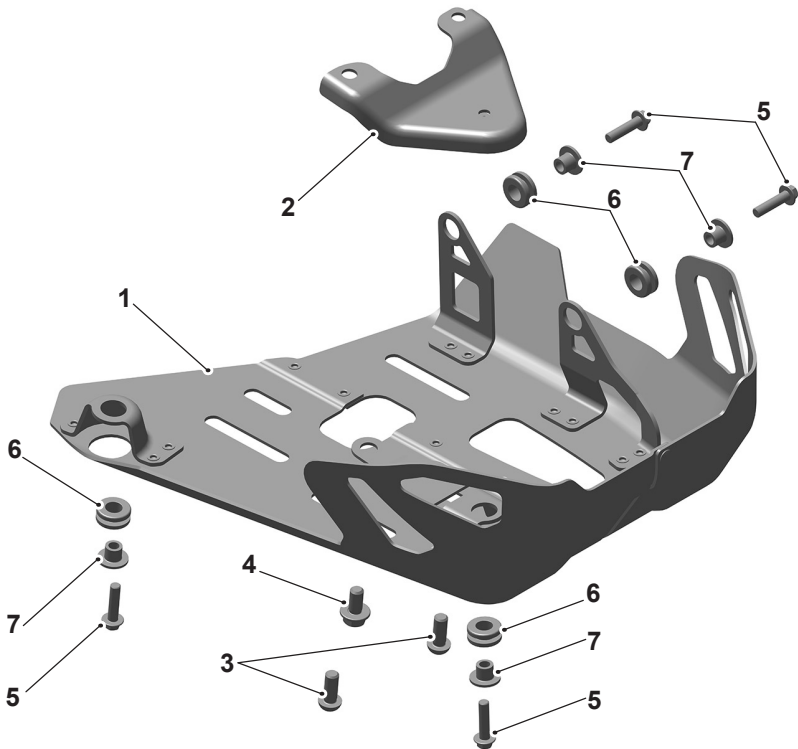
Thank you for choosing this Triumph genuine accessory kit. This accessory kit is the product of Triumph's use of proven engineering, exhaustive testing, and continuous striving for superior reliability, safety and performance.

Completely read all of these instructions before commencing the installation of the accessory kit in order to become thoroughly familiar with the kit's features and the installation process.

These instructions should be considered a permanent part of your accessory kit, and should remain with it even if your accessory equipped motorcycle is subsequently sold.

Sump Guard Kit	
Kit Number	Models
A9700423	Tiger 900, Tiger 900 GT to VIN BM5542, Tiger 900 GT Pro to VIN BM5558, Tiger 900 GT (LRH), Tiger 900 GT Aragon Edition, Tiger 900 Rally, Tiger 850 Sport

Parts supplied



1. Sump guard	1 off	5. Fixing, M6 x 25 mm	4 off
2. Front mounting bracket	1 off	6. Grommet	4 off
3. Fixing, M8 x 20 mm	2 off	7. Flanged sleeve	4 off
4. Fixing, M8 x 16 mm	1 off		

⚠ WARNING

Fit only genuine Triumph accessories to those models approved by Triumph as listed in the associated Triumph fitting instructions.

The accessory kits covered in this instruction are designed for use on specific models of Triumph motorcycle. The accessory kits and the models applicable are listed at the start of the instruction. They should never be fitted to any other Triumph model or to any other manufacturer's motorcycle.

Fitting an accessory kit to a Triumph model not listed, or to any other manufacturer's motorcycle, will affect the performance, stability and handling of the motorcycle.

Failure to follow the advice above may lead to loss of motorcycle control which could result in serious injury or death.

⚠ WARNING

Always have Triumph approved parts, accessories and conversions fitted by a competent person with the specialist knowledge and technical understanding of motorcycles, such as an authorised Triumph dealer.

The fitment of parts, accessories and conversions by a person without the specialist knowledge and technical understanding of motorcycles may affect the handling, stability or other aspects of the motorcycle's operation.

Failure to follow the advice above may lead to loss of motorcycle control which could result in serious injury or death.

⚠ WARNING

A torque wrench of known accurate calibration must be used when fitting this accessory kit.

Failure to tighten any of the fasteners to the correct torque specification may affect motorcycle performance, handling and stability.

Failure to follow the advice above may lead to loss of motorcycle control which could result in serious injury or death.

⚠ WARNING

Make sure the motorcycle is stabilised and adequately supported.

Do not support the motorcycle on any ancillary component, the exhaust system or any other non structural parts of the motorcycle frame.

A correctly supported motorcycle will help prevent it from falling.

An unstable motorcycle may fall resulting in motorcycle damage, serious injury or death.

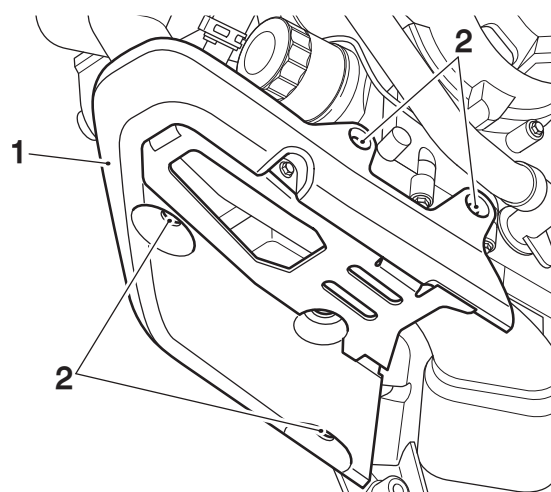
NOTICE

Triumph offers a broad range of approved genuine accessories for your motorcycle.

We cannot therefore cover all possible equipment variations in these instructions. For removal and installation of Triumph Genuine Accessories, always refer to the instructions supplied with the respective accessory kit.

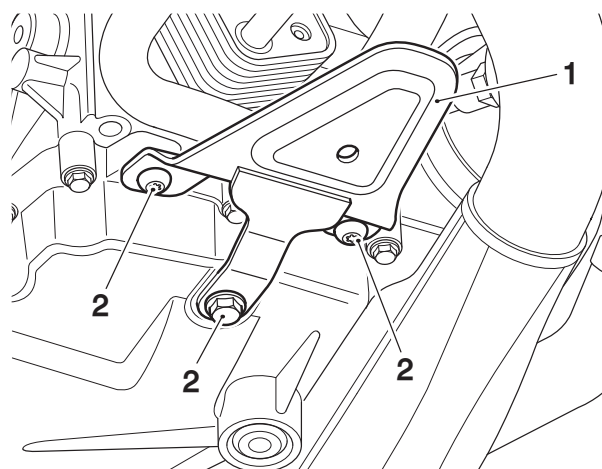
To obtain additional copies of any Triumph accessory instructions, visit www.triumphinstructions.com or contact your authorised Triumph dealer.

1. Place the motorcycle on a paddock stand.
2. Remove sump guard. Retain the sump guard and fixings for reuse if the motorcycle is to be returned to its original condition.



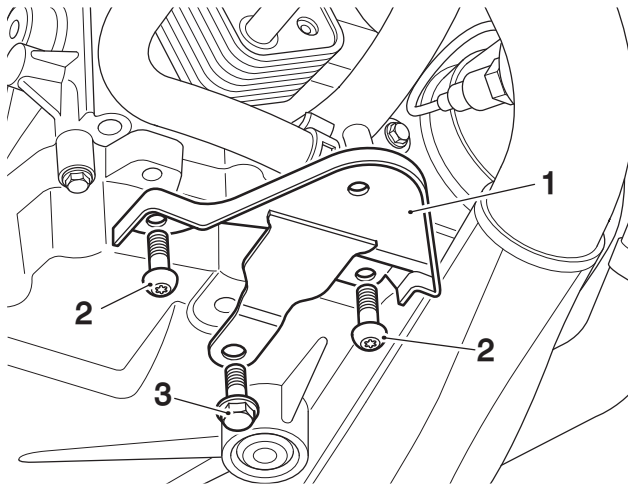
1. Sump guard
2. Fixings

3. Remove the sump guard front mounting bracket. Retain the bracket and fixings for reuse if the motorcycle is to be returned to its original condition.



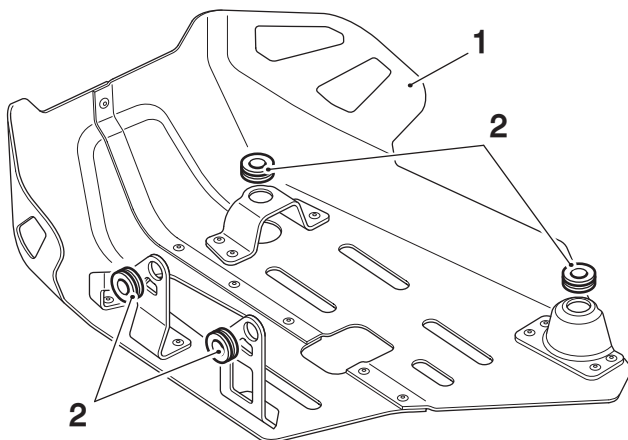
1. Front mounting bracket
2. Fixings

4. Collect the front mounting bracket, M8 x 20 mm fixings and M8 x 16 mm fixing from the kit.
5. Fit the front mounting bracket to the sump and secure with the M8 x 20 mm fixings and M8 x 16 mm fixing positioned as shown. Tighten the fixings to **15 Nm**.



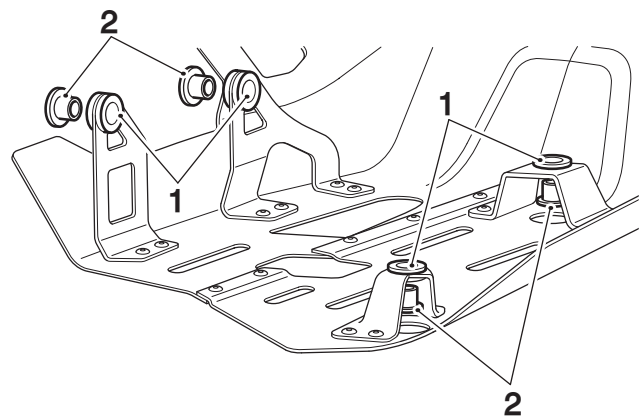
1. Front mounting bracket
2. Fixings, M8 x 20 mm
3. Fixing, M8 x 16 mm

6. Collect the sump guard and grommets from the kit. Fit a grommet into the four mounting positions in the sump guard as shown.



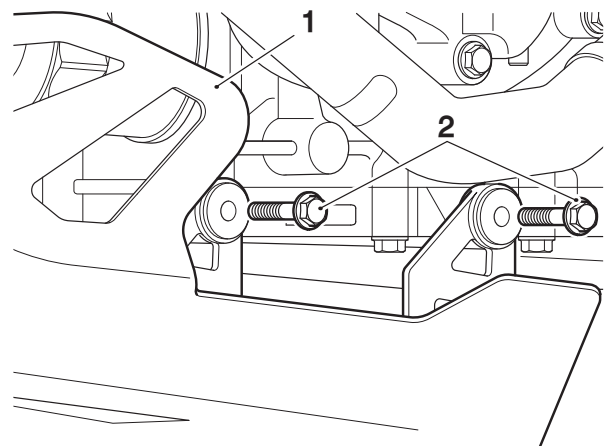
1. Sump guard
2. Grommets

7. Fit the flanged sleeves from the kit into the grommets in the orientation shown below.



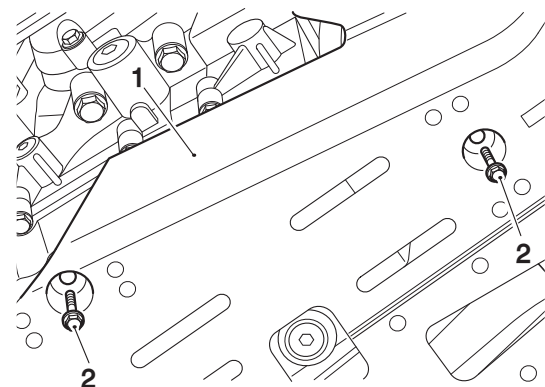
1. Grommets
2. Flanged sleeves

8. Position the sump guard on the motorcycle and loosely fit two M6 x 25 mm fixings from the kit to the sump guard side mounting positions, as shown.



1. Sump guard
2. Fixings, M6 x 25 mm

9. Fit two M6 x 25 mm fixings from the kit to the sump guard bottom mounting positions, as shown.



1. Sump guard
2. Fixings, M6 x 25 mm

10. Tighten the four M6 x 25 mm sump guard fixings to **6 Nm**.
11. Remove the motorcycle from the paddock stand.

WARNING

After fitting the accessory kit the motorcycle will exhibit new handling characteristics.

Operate the motorcycle in a safe area free from traffic to gain familiarity with any new characteristics.

Operation of the motorcycle when not familiar with any new handling characteristics may lead to loss of motorcycle control which could result in serious injury or death.

WARNING

If, after fitting this accessory kit, you have any doubt about the performance of any aspect of the motorcycle, contact a competent person with the specialist knowledge and technical understanding of motorcycles, such as an authorised Triumph dealer.

Riding a motorcycle when there is any doubt as to any aspect of the performance of the motorcycle may lead to loss of motorcycle control which could result in serious injury or death.

WARNING

Never ride an accessory-equipped motorcycle at speeds above 80 mph (130 km/h).

Remember that the 80 mph (130 km/h) limit will be reduced by the fitting of non-approved accessories, incorrect loading, worn tyres, overall motorcycle condition and poor road or weather conditions.

The presence of accessories will cause changes in the stability and handling of the motorcycle. Failure to allow for changes in motorcycle stability may lead to loss of motorcycle control which could result in serious injury or death.

WARNING

High-speed operation should only be attempted by riders who have been instructed in the techniques necessary for high-speed riding and are familiar with the motorcycle's characteristics in all conditions.

Only operate this Triumph motorcycle at high speed in closed-course, on-road competition or on closed-course racetracks.

High-speed operation in any other circumstances is dangerous and may lead to loss of motorcycle control which could result in serious injury or death.

NOTICE

The motorcycle must not be operated above the legal road speed limit except in closed-course conditions.