



Accessory Fitting Instructions

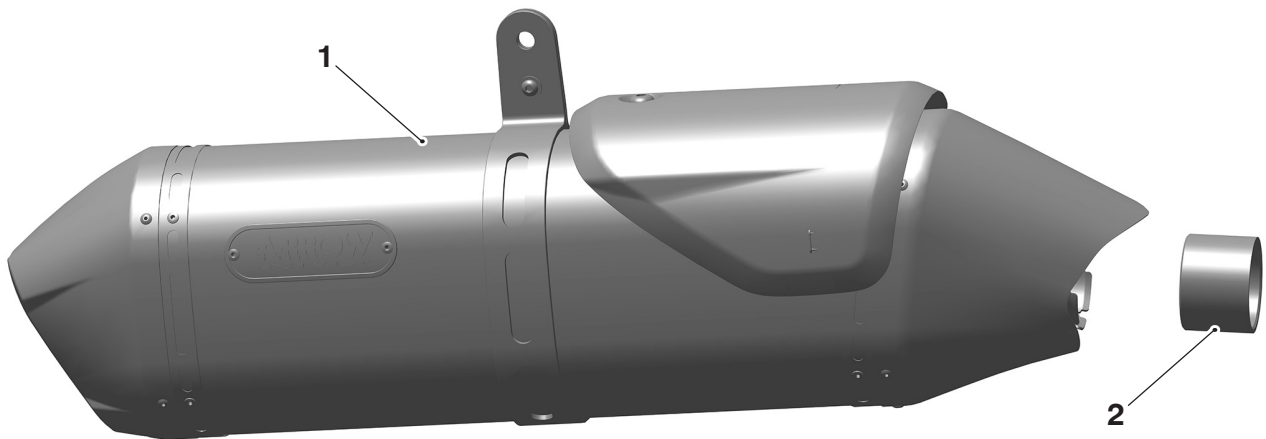
Thank you for choosing this Triumph genuine accessory kit. This accessory kit is the product of Triumph's use of proven engineering, exhaustive testing, and continuous striving for superior reliability, safety and performance.

Completely read all of these instructions before commencing the installation of the accessory kit in order to become thoroughly familiar with the kit's features and the installation process.

These instructions should be considered a permanent part of your accessory kit, and should remain with it even if your accessory equipped motorcycle is subsequently sold.

Silencer Kit, EU	
Kit Number	Models
A9680028	Tiger 900, Tiger 900 GT to VIN BM5542, Tiger 900 GT Pro to VIN BM5558, Tiger 900 GT (LRH), Tiger 900 Rally, Tiger 900 Rally Pro to VIN BM8581, Tiger 850 Sport

Parts supplied



1. Silencer	1 off	2. Gasket	1 off
-------------	-------	-----------	-------

⚠ WARNING

Fit only genuine Triumph accessories to those models approved by Triumph as listed in the associated Triumph fitting instructions.

The accessory kits covered in this instruction are designed for use on specific models of Triumph motorcycle. The accessory kits and the models applicable are listed at the start of the instruction. They should never be fitted to any other Triumph model or to any other manufacturer's motorcycle.

Fitting an accessory kit to a Triumph model not listed, or to any other manufacturer's motorcycle, will affect the performance, stability and handling of the motorcycle.

Failure to follow the advice above may lead to loss of motorcycle control which could result in serious injury or death.

⚠ WARNING

Always have Triumph approved parts, accessories and conversions fitted by a competent person with the specialist knowledge and technical understanding of motorcycles, such as an authorised Triumph dealer.

The fitment of parts, accessories and conversions by a person without the specialist knowledge and technical understanding of motorcycles may affect the handling, stability or other aspects of the motorcycle's operation.

Failure to follow the advice above may lead to loss of motorcycle control which could result in serious injury or death.

⚠ WARNING

A torque wrench of known accurate calibration must be used when fitting this accessory kit.

Failure to tighten any of the fasteners to the correct torque specification may affect motorcycle performance, handling and stability.

Failure to follow the advice above may lead to loss of motorcycle control which could result in serious injury or death.

⚠ WARNING

Make sure the motorcycle is stabilised and adequately supported.

Do not support the motorcycle on any ancillary component, the exhaust system or any other non structural parts of the motorcycle frame.

A correctly supported motorcycle will help prevent it from falling.

An unstable motorcycle may fall resulting in motorcycle damage, serious injury or death.

NOTICE

Triumph offers a broad range of approved genuine accessories for your motorcycle.

We cannot therefore cover all possible equipment variations in these instructions. For removal and installation of Triumph Genuine Accessories, always refer to the instructions supplied with the respective accessory kit.

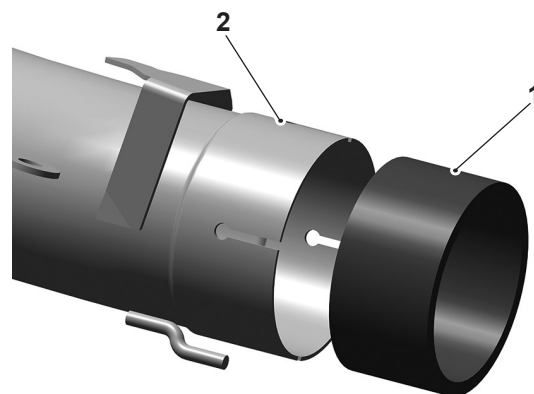
To obtain additional copies of any Triumph accessory instructions, visit www.triumphinstructions.com or contact your authorised Triumph dealer.

NOTICE

Lock nuts can be reused providing resistance can be felt when the locking portion passes over the thread of the fixing.

Always use the correct replacement lock nut as recommended in the Triumph parts catalogue.

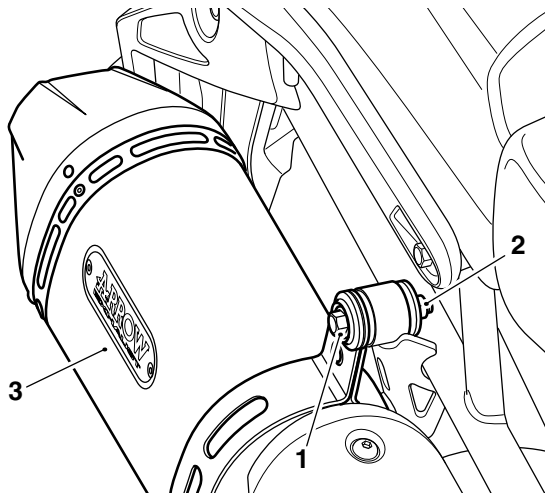
1. Remove the seat as described in the Service Manual.
2. Remove the silencer as described in the Service Manual. Discard the gasket.
3. Collect the silencer and gasket from the kit. Inset the gasket into the silencer



1. Silencer
2. Gasket

4. Position and engage the silencer to the exhaust header pipe. Do not tighten clamp at this stage.

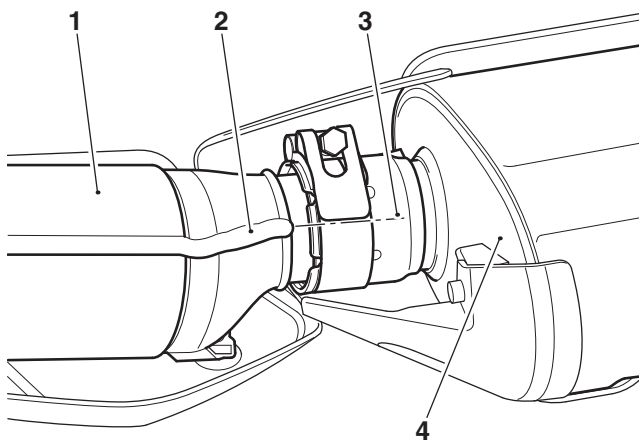
- Align the silencer mounting bracket to the rear frame bracket and refit the nut. Do not fully tighten at this stage.



clbg

- Silencer mounting bracket fixing
- Nut
- Silencer

- Align the clamp for the silencer to exhaust header pipe joint as shown below and tighten to **10 Nm**.

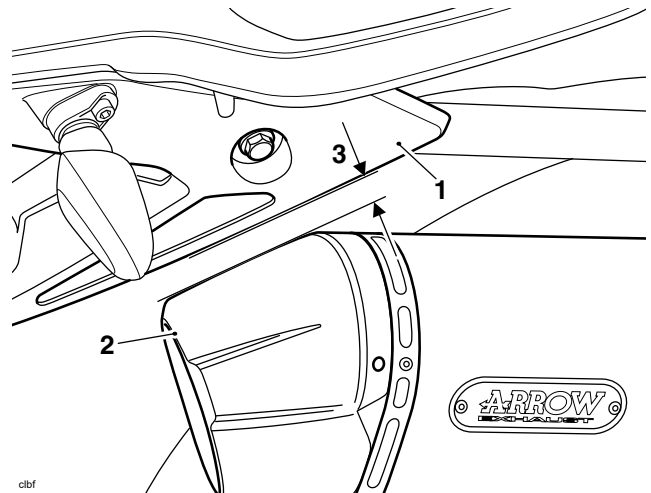


B00931

- Header pipe
- Weld line
- Clamp alignment
- Silencer

- Tighten the fixing that attaches the silencer to the frame to **15 Nm**.

- Measure the clearance between the silencer and the licence plate hanger as shown below. The gap "3" must be 11.9 mm minimum.



clbf

- Licence plate hanger
- Silencer
- Clearance gap

⚠ CAUTION

Do not install the exhaust system or run the engine without the exhaust heat shields fitted. Components protected by the exhaust heat shields may suffer severe damage or a fire if the motorcycle is operated without the heat shields being fitted.

- Start the engine and check for exhaust gas leaks. Rectify if necessary.
- Refit the seat as described in the Service Manual.

⚠ WARNING

After fitting the accessory kit the motorcycle will exhibit new handling characteristics.

Operate the motorcycle in a safe area free from traffic to gain familiarity with any new characteristics.

Operation of the motorcycle when not familiar with any new handling characteristics may lead to loss of motorcycle control which could result in serious injury or death.

⚠ WARNING

If, after fitting this accessory kit, you have any doubt about the performance of any aspect of the motorcycle, contact a competent person with the specialist knowledge and technical understanding of motorcycles, such as an authorised Triumph dealer.

Riding a motorcycle when there is any doubt as to any aspect of the performance of the motorcycle may lead to loss of motorcycle control which could result in serious injury or death.

⚠ WARNING

Never ride an accessory-equipped motorcycle at speeds above 80 mph (130 km/h).

Remember that the 80 mph (130 km/h) limit will be reduced by the fitting of non-approved accessories, incorrect loading, worn tyres, overall motorcycle condition and poor road or weather conditions.

The presence of accessories will cause changes in the stability and handling of the motorcycle. Failure to allow for changes in motorcycle stability may lead to loss of motorcycle control which could result in serious injury or death.

⚠ WARNING

High-speed operation should only be attempted by riders who have been instructed in the techniques necessary for high-speed riding and are familiar with the motorcycle's characteristics in all conditions.

Only operate this Triumph motorcycle at high speed in closed-course, on-road competition or on closed-course racetracks.

High-speed operation in any other circumstances is dangerous and may lead to loss of motorcycle control which could result in serious injury or death.

NOTICE

The motorcycle must not be operated above the legal road speed limit except in closed-course conditions.

HOMOLOGATION CERTIFICATE

This document certifies that this exhaust kit complies in full with the road approval regulation stated below:

United Nations Regulation ECE 41-04 Uniform Provisions Concerning the Approval of Motorcycles with Regard to Noise



E9-41R-04/06*1192

This exhaust kit can be fitted to the vehicles listed below:

Kit Number	Silencer Number	Vehicle Commercial Name	Vehicle Approval Number
A9680028	9680028	Tiger 900, Tiger 900 GT to VIN BM5542, Tiger 900 GT Pro to VIN BM5558, Tiger 900 GT (LRH), Tiger 900 Rally, Tiger 900 Rally Pro to VIN BM8581, Tiger 850 Sport	e9*168/2013*11520 e9*168/2013*11521

The installation of this exhaust kit does not affect the performance of the original equipment catalytic converter which remains unchanged.