

### Fitting Instructions:

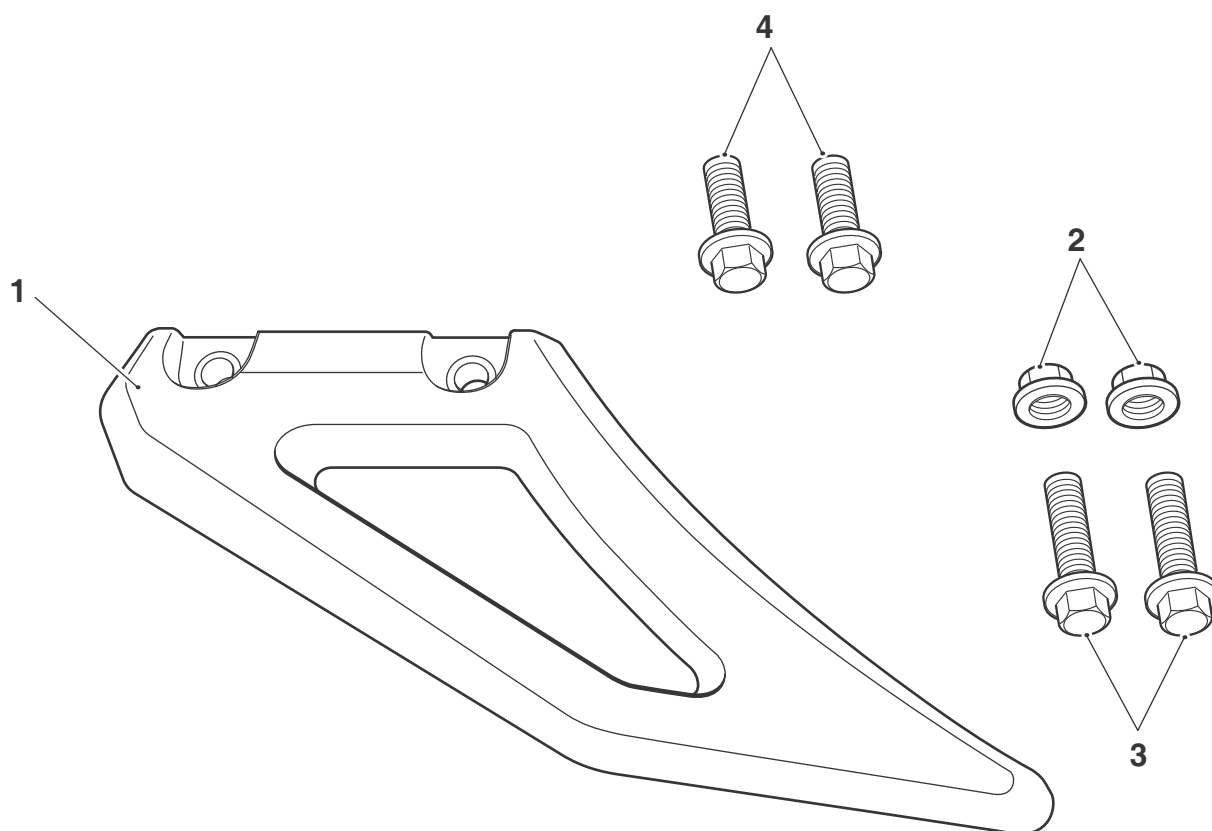
### Daytona 675, Daytona 675 R, Street Triple Rx, Street Triple and Street Triple R

### A9648020

Thank you for choosing this Triumph genuine accessory kit. This accessory kit is the product of Triumph's use of proven engineering, exhaustive testing, and continuous striving for superior reliability, safety and performance.

Completely read all of these instructions before commencing the installation of the accessory kit in order to become thoroughly familiar with the kit's features and the installation process.

These instructions should be considered a permanent part of your accessory kit, and should remain with it even if your accessory-equipped motorcycle is subsequently sold.



T1091

### Parts Supplied:

1. Lower chain guard	1 off	3. Bolt M6 x 20 mm	2 off
2. Lock nut M6	2 off	4. Bolt M6 x 16 mm	2 off



### Warning

This accessory kit is designed for use on Triumph Daytona 675, Daytona 675 R, Street Triple Rx, Street Triple and Street Triple R motorcycles only and should not be fitted to any other manufacturer's motorcycle. Fitting this accessory kit to any other manufacturer's motorcycle will affect the performance, stability and handling of the motorcycle. This may affect the rider's ability to control the motorcycle and could cause an accident.



### Warning

Always have Triumph approved parts, accessories and conversions fitted by a trained technician of an authorised Triumph dealer. The fitment of parts, accessories and conversions by a technician who is not of an authorised Triumph dealer may affect the handling, stability or other aspects of the motorcycle's operation, which may result in loss of motorcycle control and an accident.



### Warning

Throughout this operation, ensure that the motorcycle is stabilised and adequately supported to prevent risk of injury from the motorcycle falling.



### Warning

If the engine has recently been running, the exhaust system will be hot. Before working on or near the exhaust system, allow sufficient time for the system to cool, as touching any part of a hot exhaust could cause burn injuries.



### Warning

Ensure the rear wheel remains stationary during the fitment of the chain guard kit. Serious injury could result from contact with the drive chain and rear sprocket whilst the rear wheel is in motion.



### Warning

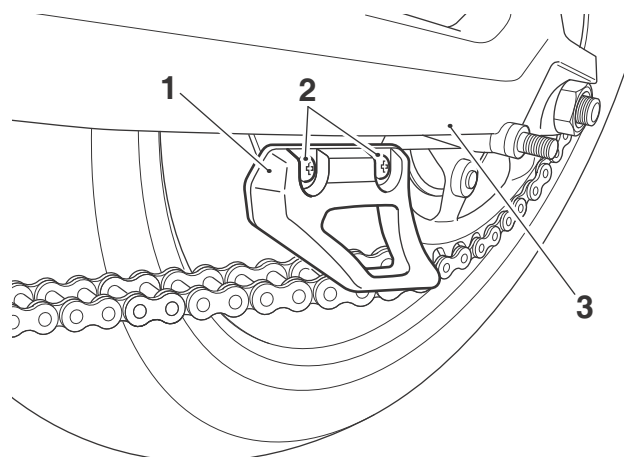
A torque wrench of known accurate calibration must be used when fitting this accessory kit. Failure to tighten any of the fasteners to the correct torque specification may affect motorcycle performance, handling and stability. This may result in loss of motorcycle control and an accident.

#### Note:

- **Daytona 675, Daytona 675 R, Street Triple up to VIN 560476 and Street Triple R up to VIN 560476** use the **M6 x 20 mm bolts and lock nuts** provided.
- **Street Triple Rx, Street Triple from VIN 560477 and Street Triple R from VIN 560477** use the **M6 x 16 mm bolts** provided.
- **Discard any parts contained in the kit which are not required.**

#### **Daytona 675, Daytona 675 R, Street Triple up to VIN 560476 and Street Triple R up to VIN 560476:**

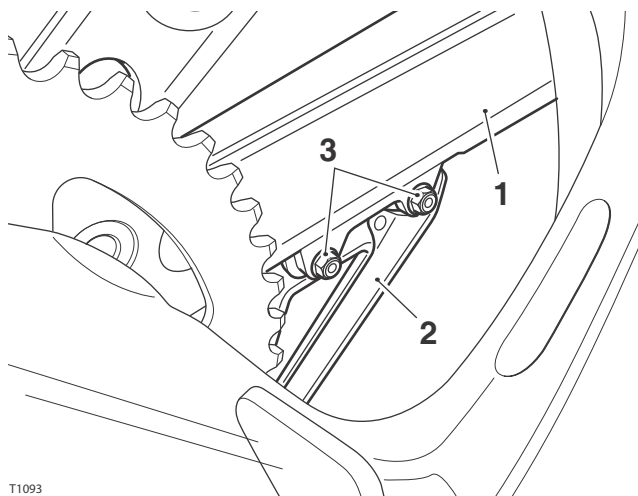
1. Collect the lower chain guard, the two M6 x 20 mm bolts and the lock nuts from the kit.
2. Align the lower chain guard to the mounting holes on the left hand side of the swinging arm.
3. Fit the two M6 x 20 mm bolts to hold the lower chain guard in position on the swinging arm.



T1092

1. Lower chain guard
2. Bolts M6 x 20 mm
3. Swinging arm

4. Whilst holding the lower chain guard mounting bolts, fit the lock nuts and tighten to **9 Nm**.

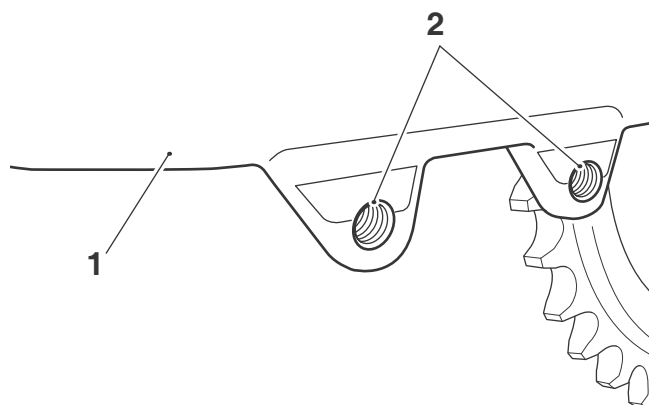


T1093

1. Swinging arm
2. Lower chain guard
3. Lock nuts

**Street Triple Rx,  
Street Triple from VIN 560477 and  
Street Triple R from VIN 560477:**

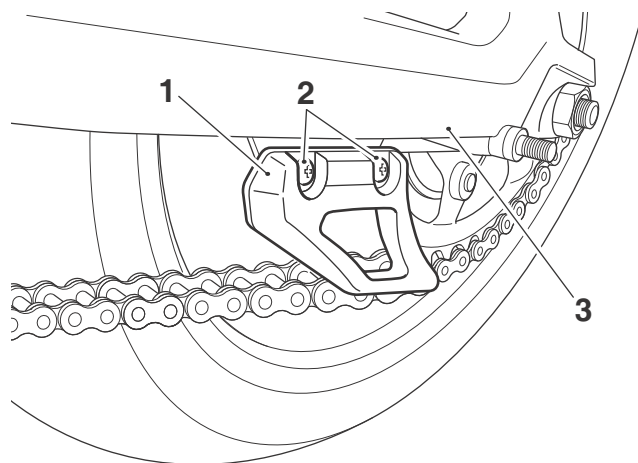
1. Collect the lower chain guard and the two M6 x 16 mm bolts from the kit.
2. Align the lower chain guard to the threaded holes on the left hand side of the swinging arm.



T1094

1. Swinging arm
2. Threaded hole

3. Secure the lower chain guard to the swinging arm with the M6 x 16 mm bolts. Tighten the bolts to **9 Nm**.



T1092

1. Lower chain guard
2. Bolts M6 x 16 mm
3. Swinging arm



### Warning

The chain guard does not provide complete protection from contact with the drive chain and rear sprocket. Keep hands, feet and clothing away from the drive chain and sprocket when the rear wheel is in motion. Serious injury could result from contact with the drive chain and rear sprocket whilst the rear wheel is in motion.



### Warning

Never ride an accessory-equipped motorcycle (including those fitted with Triumph approved windscreens and luggage systems) at speeds above 80 mph (130 km/h).

The presence of accessories such as windscreens and luggage systems will cause changes in the stability and handling of the motorcycle. Failure to allow for changes in motorcycle stability may lead to loss of control or an accident.

Remember that the 80 mph (130 km/h) limit will be reduced by the fitting of non-approved accessories, incorrect loading, worn tyres, overall motorcycle condition and poor road or weather conditions.



### Warning

This motorcycle must not be operated above the legal road speed limit except in authorised closed-course conditions.



### Warning

Only operate this Triumph motorcycle at high speed in closed-course on road competition or on closed-course racetracks. High speed operation should only be attempted by riders who have been instructed in the techniques necessary for high speed riding and are familiar with the motorcycle's characteristics in all conditions.

High speed operation in any other circumstances is dangerous and will lead to loss of motorcycle control and an accident.