



## Accessory Fitting Instructions

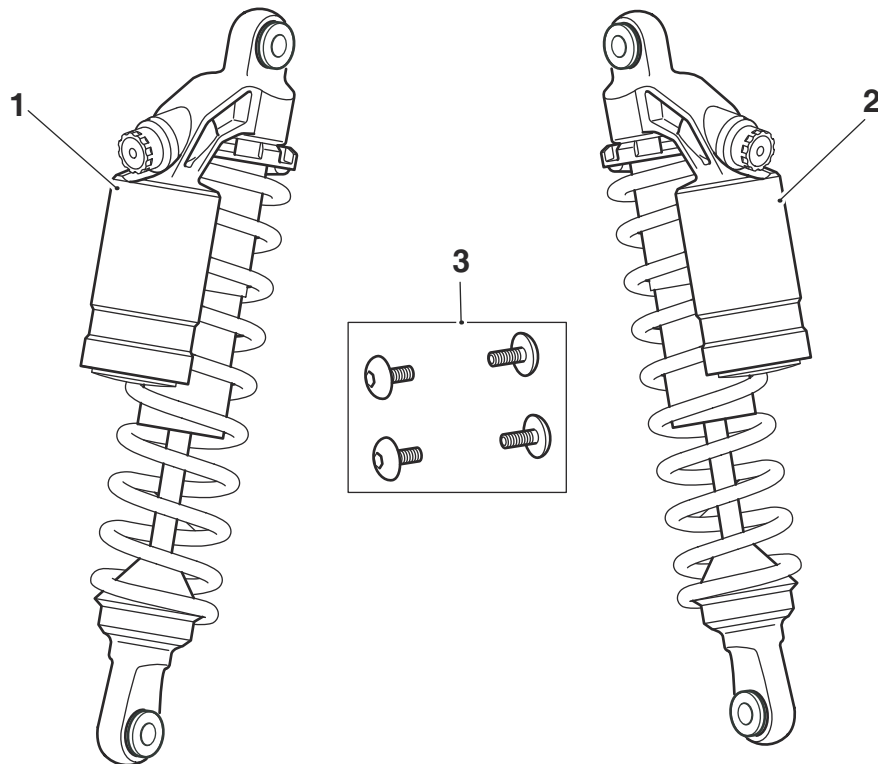
Fox RSU, Pair - Short	
<b>Kit Number</b>	<b>Models Affected</b>
A9640207	Street Twin, Speed Twin 900
Fox RSU, Pair - Long	
<b>Kit Number</b>	<b>Models Affected</b>
A9640208	Street Cup, Street Scrambler, Scrambler 900, Bonneville T100 and Bonneville T100 - Black from VIN 759204, Bonneville T120, Bonneville T120 - Black

Thank you for choosing this Triumph genuine accessory kit. This accessory kit is the product of Triumph's use of proven engineering, exhaustive testing, and continuous striving for superior reliability, safety and performance.

Completely read all of these instructions before commencing the installation of the accessory kit in order to become thoroughly familiar with the kit's features and the installation process.

These instructions should be considered a permanent part of your accessory kit, and should remain with it even if your accessory equipped motorcycle is subsequently sold.

### Parts Supplied



1. Rear suspension unit, left hand	1 off	3. Fixing, M8 x 20 mm	4 off
2. Rear suspension unit, right hand	1 off		

## Warning

The accessory kits covered in this instruction are designed for use on specific models of Triumph motorcycle. The accessory kits and the models applicable are listed at the start of the instruction. They should not be fitted to any other Triumph model or to any other manufacturer's motorcycle. Fitting an accessory kit to a Triumph model not listed, or to any other manufacturer's motorcycle will affect the performance, stability and handling of the motorcycle. This may result in loss of motorcycle control and an accident.

## Warning

Always have Triumph approved parts, accessories and conversions fitted by a trained technician of an authorised Triumph dealer. The fitment of parts, accessories and conversions by a technician who is not of an authorised Triumph dealer may affect the handling, stability or other aspects of the motorcycle's operation which may result in loss of motorcycle control and an accident.

## Warning

Throughout this operation, ensure that the motorcycle is stabilised and adequately supported to prevent risk of injury from the motorcycle falling.

## Warning

A torque wrench of known accurate calibration must be used when fitting this accessory kit. Failure to tighten any of the fasteners to the correct torque specification may affect motorcycle performance, handling and stability. This may result in loss of motorcycle control and an accident.

### Note:

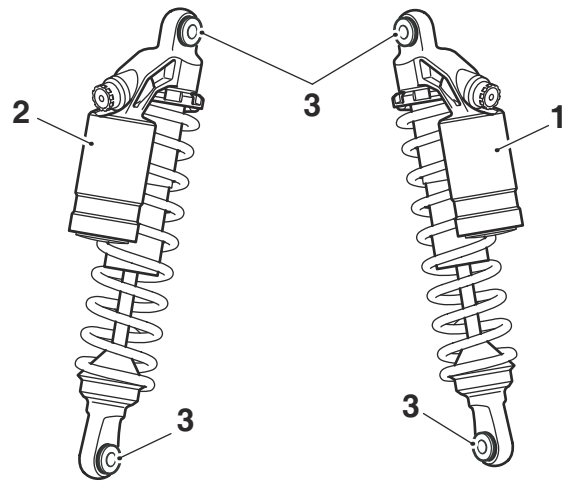
- **Triumph offers a broad range of approved genuine accessories for your motorcycle. We cannot therefore cover all possible equipment variations in these instructions. For removal and installation of Triumph Genuine Accessories, always refer to the instructions supplied with the respective accessory kit. To obtain additional copies of any Triumph accessory instructions, visit [www.triumphinstructions.com](http://www.triumphinstructions.com) or contact your authorised Triumph dealer.**

## Rear Suspension Installation

1. Remove the rear suspension units, as described in the Service Manual. Retain the suspension units for use if the motorcycle is to be returned to its original condition. Retain the washers for reuse, discard the fixings.

### Note:

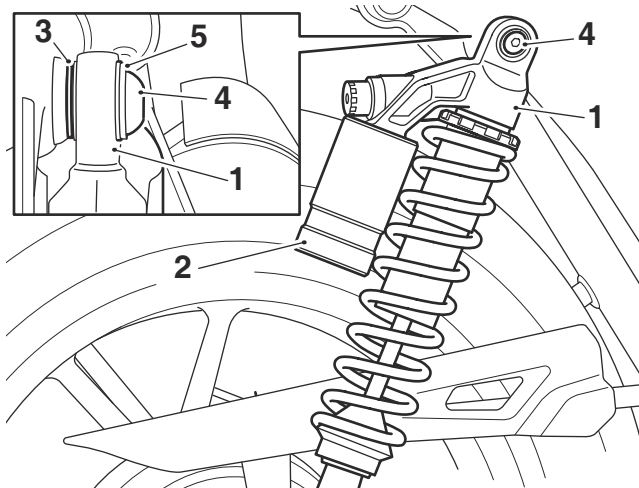
- **When fitting the accessory rear suspension units the oil reservoir and damping adjuster must be positioned towards the rear of the motorcycle.**
- **The right hand and left hand suspension units are identified by the orientation of the flanged sleeves as shown below.**



1. Suspension unit, right hand
2. Suspension unit, left hand
3. Flanged sleeve

## Right hand side

2. Collect the right hand suspension unit from the kit.
3. Fit the rear suspension unit ensuring the head of the flanged sleeves are positioned against the motorcycle frame and the oil reservoir is positioned towards the rear of the motorcycle, as shown. Fit the new fixings provided in the kit with the original washers. Tighten the fixings to **28 Nm**.



1. Rear suspension unit
  2. Oil reservoir
  3. Flanged sleeve (top mounting shown)
  4. Fixing (top mounting shown)
  5. Washer (top mounting shown)
4. Repeat steps 2 and 3 for the left hand side.
  5. If the exhaust silencers were removed during the installation procedure, refit them as described in the Service Manual.

## Suspension Setting



### Warning

Make sure that the adjusters are set to the same setting on both rear suspension units. Settings that vary from left to right may affect handling and stability which may result in loss of motorcycle control and an accident.

#### Note:

- The accessory suspension units have two different adjustment settings; spring preload and compression damping.
- The details given in the tables are only a guide. Setting requirements may vary for rider and passenger weight and personal preferences.

The standard rear suspension settings provide a comfortable ride and good handling characteristics for general, solo riding. The following tables show suggested settings for rear suspension under different load conditions.

Preload		
Loading Condition		Rear Spring Preload <sup>1</sup>
Solo Riding	Standard	0 (Fully Anticlockwise)
	Comfort (softer)	0 (Fully Anticlockwise)
	Sport (firmer)	0 (Fully Anticlockwise)
Rider and Passenger		7.75 (Fully Clockwise)

<sup>1</sup> Number of turns clockwise from the fully anticlockwise position, when looking from the top of the suspension unit.

Damping		
Load Condition		Rear Compression Damping <sup>2</sup>
Solo Riding	Standard	18
	Comfort (softer)	23
	Sport (firmer)	10
Rider and Passenger		10

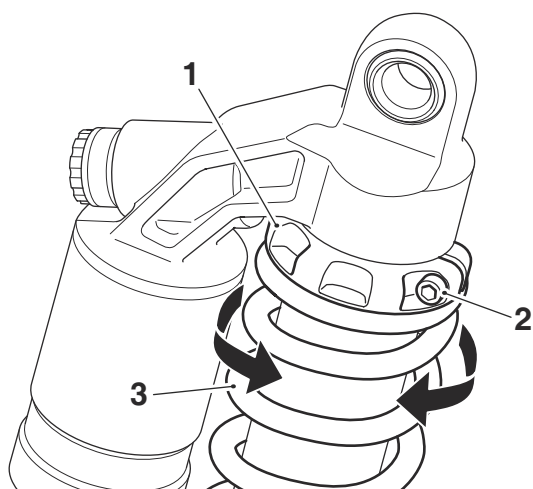
<sup>2</sup> Number of clicks anticlockwise from the fully clockwise position noting that the first stop (click) is counted as 1.

---

## Rear Suspension Preload Adjustment

### Note:

- The spring preload adjuster is located at the top of the rear suspension unit.
  - The accessory suspension units are supplied with the preload adjuster set at the Standard Solo Riding settings, as shown in the relevant suspension chart on page 3.
1. To change the rear suspension spring preload setting, loosen the pinch bolt on the preload adjuster. Do not remove the pinch bolt. Looking from the top of the suspension unit, turn the spring and adjuster ring clockwise to increase spring preload and anticlockwise to decrease spring preload. Tighten the pinch bolt to **6 Nm**.

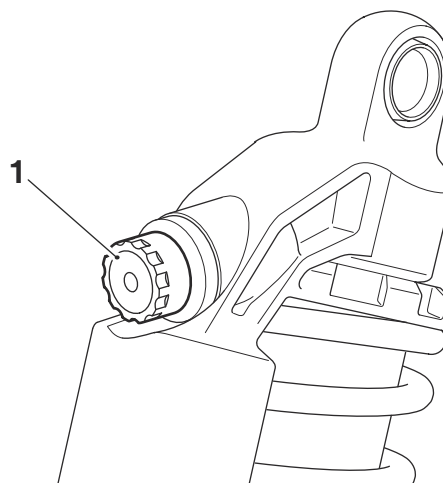


1. Rear suspension preload adjuster ring
2. Pinch bolt
3. Spring

## Rear Suspension Compression Damping Adjustment

### Note:

- The setting is measured as the number of adjuster clicks anticlockwise from the fully clockwise position.
  - The accessory suspension units are supplied with the compression damping adjuster set at the Standard Solo Riding settings, as shown in the relevant suspension chart on page 3.
1. To change the compression damping setting, rotate the adjuster clockwise to increase, or anticlockwise to decrease.



1. Rear suspension compression damping adjuster

## Servicing

### Note:

- **The spring and spring guide on this rear suspension unit may show signs of wear after use. This wear is normal and not considered to be a fault and does not affect the performance, operation or safety of the rear suspension. For further information, and for service, please contact an authorised FOX Service Centre.**

### Warning

Contents under pressure. Never attempt to open this rear suspension unit. Never attempt to service this rear suspension unit. Never incinerate, puncture, or disassemble this rear suspension unit. Opening this rear suspension unit may result in severe injuries or even death.

For service, return this rear suspension unit to an authorised FOX service centre.



The rear suspension units are sealed units and do not have any internally user serviceable parts.

### Warning

If, after fitting this accessory kit, you have any doubt about the performance of any aspect of the motorcycle, contact an authorised Triumph dealer and do not ride the motorcycle until the authorised dealer has declared it fit for use. Riding a motorcycle when there is any doubt as to any aspect of the performance of the motorcycle may result in loss of motorcycle control and an accident.

### Warning

Never ride an accessory-equipped motorcycle at speeds above 80 mph (130 km/h).

The presence of accessories will cause changes in the stability and handling of the motorcycle. Failure to allow for changes in motorcycle stability may result in loss of motorcycle control and an accident.

Remember that the 80 mph (130 km/h) limit will be reduced by the fitting of non-approved accessories, incorrect loading, worn tyres, overall motorcycle condition and poor road or weather conditions.

### Warning

The motorcycle must not be operated above the legal road speed limit except in closed-course conditions.

### Warning

Only operate this Triumph motorcycle at high speed in closed-course, on-road competition or on closed-course racetracks. High-speed operation should only be attempted by riders who have been instructed in the techniques necessary for high-speed riding and are familiar with the motorcycle's characteristics in all conditions.

High-speed operation in any other circumstances is dangerous and may lead to loss of motorcycle control and an accident.