



Accessory Fitting Instructions

Thank you for choosing this Triumph genuine accessory kit. This accessory kit is the product of Triumph's use of proven engineering, exhaustive testing, and continuous striving for superior reliability, safety and performance.

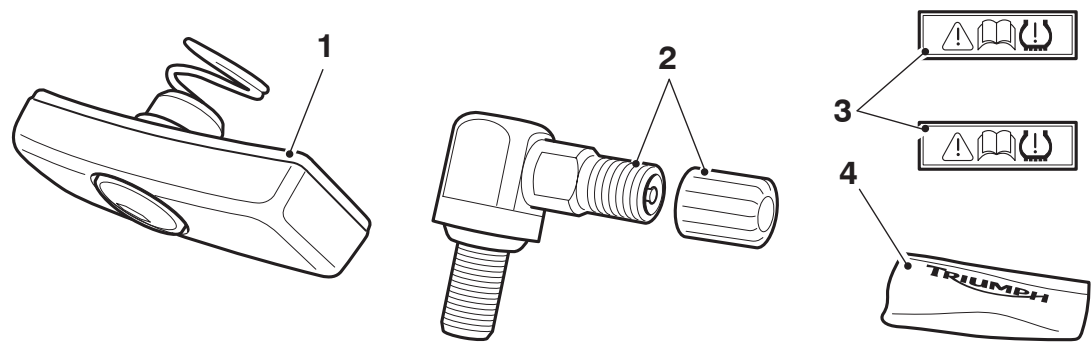
Completely read all of these instructions before commencing the installation of the accessory kit in order to become thoroughly familiar with the kit's features and the installation process.

These instructions should be considered a permanent part of your accessory kit, and should remain with it even if your accessory equipped motorcycle is subsequently sold.

Tyre Pressure Monitoring System (TPMS) Kit

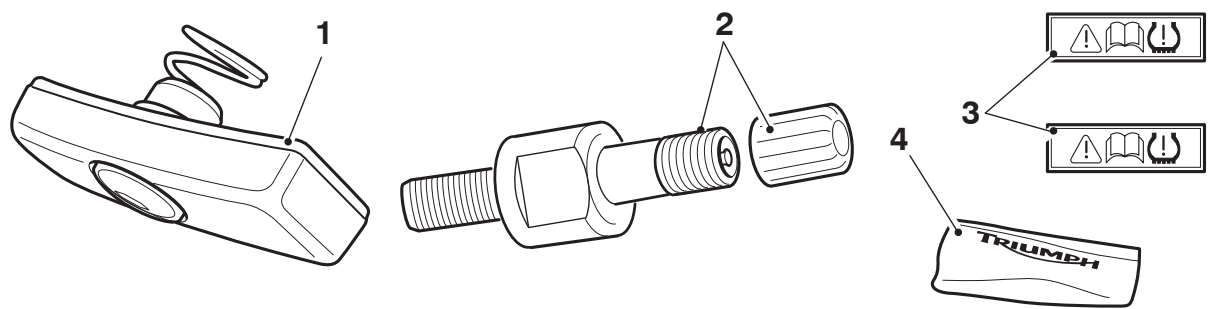
| Kit Number | Models |
|--|--|
| A9640168, A9640169 | Speed Triple 1050 from VIN 461332, Speed Triple 1050 R, Speed Triple R, Speed Triple S, Speed Triple RS, Street Triple from VIN 560477, Street Triple R from VIN 560477, Street Triple Rx, Street Triple R, Street Triple R LRH (Low Ride Height), Street Triple RS, Street Triple S, Street Triple S 660cc, Daytona 675 from VIN 564948, Daytona 675 R from VIN 564948, Daytona Moto2™ 765, Tiger Explorer, Tiger Explorer XR, Tiger Explorer XRr, Tiger Explorer XRr LRH, Tiger Sport, Tiger 850 Sport, Trophy 1215, Tiger 800, Tiger 800 XR, Tiger 800 XRr, Tiger 800 XRr LRH, Tiger 800 XRT, Tiger 900, Tiger 900 GT, Tiger 900 GT Low Ride Height, Tiger 900 Rally, Tiger 1200 XR, Tiger 1200 XRr, Tiger 1200 XRr Low Ride Height, Tiger 1200 XRT, Street Twin, Speed Twin , Speed Twin 900, Scrambler 1200 XC, Scrambler 1200 XE to VIN BN8495, Rocket 3 R, Rocket 3 GT, Rocket 3 GT Triple Black, Rocket 3 R Black, Trident from VIN AC6898 |
| A9640251, A9640252 | Speed Triple 1050 from VIN 461332, Speed Triple 1050 R, Speed Triple S, Speed Triple R, Speed Triple RS, Speed Triple 1200 RS, Speed Triple 1200 RR, Street Triple from VIN 560477, Street Triple R from VIN 560477, Street Triple Rx, Street Triple R, Street Triple R LRH, Street Triple RS, Street Triple RS Moto2™, Street Triple S, Street Triple S 660cc, Daytona 660, Daytona 675 from VIN 564948, Daytona 675 R from VIN 564948, Daytona Moto2™ 765, Tiger Explorer, Tiger Explorer XR, Tiger Explorer XRr, Tiger Explorer XRr LRH, Tiger Sport, Tiger 850 Sport, Trophy 1215, Tiger 800, Tiger 800 XR, Tiger 800 XRr, Tiger 800 XRr LRH, Tiger 800 XRT, Tiger 900, Tiger 900 GT, Tiger 900 GT Low Ride Height, Tiger 900 Rally, Tiger 1200 GT, Tiger 1200 GT Pro, Tiger 1200 Rally Pro, Tiger 1200 XR, Tiger 1200 XRr, Tiger 1200 XRr Low Ride Height, Tiger 1200 XRT, Street Twin, Speed Twin 900, Scrambler 1200 XC, Scrambler 1200 XE, Scrambler 1200 X, Rocket 3 R, Rocket 3 R Storm, Rocket 3 GT, Rocket 3 GT Storm, Rocket 3 GT Triple Black, Rocket 3 R Black, Trident from VIN AC6898 |
| A9640105, A9640106 | Tiger Explorer, Tiger Explorer XC |
| A9640170, A9640171, A9640253, A9640254 | Tiger Explorer, Tiger Explorer XC, Explorer XC, Explorer XR, Explorer XCx, Tiger 1200 XCA, Tiger 1200 XCX |
| A9640056 | Speed Triple 1050 from VIN 461332, Speed Triple 1050 R, Tiger 800, Tiger 800 XR, Tiger 800 XRr, Tiger Explorer, Tiger Sport, Daytona 675 from VIN 564948, Daytona 675 R from VIN 564948, Street Triple from VIN 560477, Street Triple R from VIN 560477, Street Twin, Speed Twin , Speed Twin 900, Scrambler 1200 XC, Scrambler 1200 XE to VIN BN8495, Trophy 1215 |
| A9640057 | Speed Triple 1050 from VIN 461332, Speed Triple 1050 R, Tiger 800, Tiger 800 XR, Tiger 800 XRr, Tiger Explorer, Tiger Sport, Daytona 675 from VIN 564948, Daytona 675 R from VIN 564948, Street Triple from VIN 560477, Street Triple R from VIN 560477, Speed Twin , Speed Twin 900, Trophy 1215 |

Parts Supplied: A9640056, A9640057, A9640168, A9640169



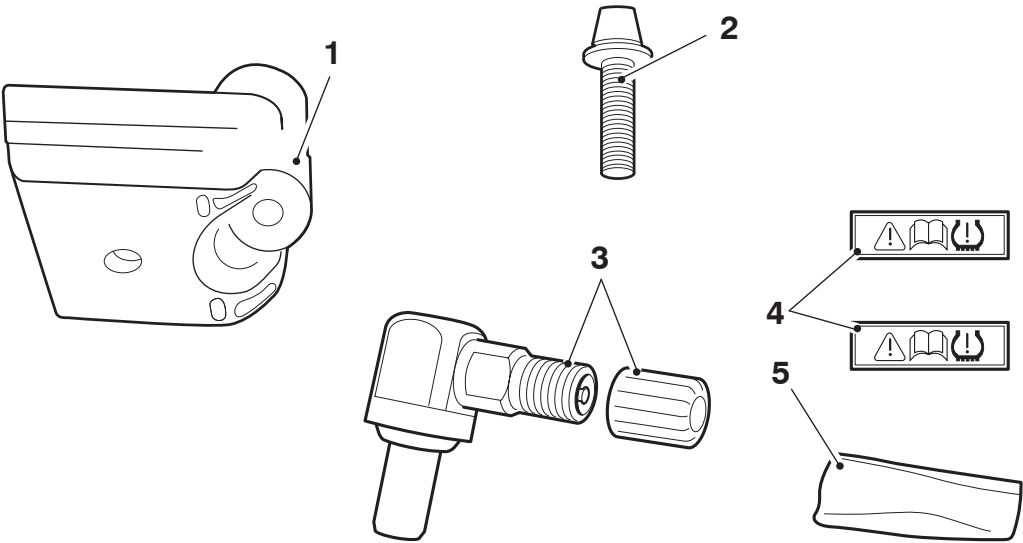
| | | | |
|-------------------------|-------|------------------|-------|
| 1. Tyre pressure sensor | 2 off | 3. Label | 2 off |
| 2. Tyre valve | 2 off | 4. Cleaning wipe | 1 off |

Parts Supplied: A9640105, A9640106, A9640170, A9640171



| | | | |
|-------------------------|-------|------------------|-------|
| 1. Tyre pressure sensor | 2 off | 3. Label | 2 off |
| 2. Tyre valve | 2 off | 4. Cleaning wipe | 1 off |

Parts Supplied: A9640251, A9640252, A9640253, A9640254



| | | | |
|-------------------------|-------|------------------|-------|
| 1. Tyre pressure sensor | 2 off | 4. Label | 2 off |
| 2. Fixing | 2 off | 5. Cleaning wipe | 1 off |
| 3. Tyre valve | 2 off | | |

⚠ WARNING

Fit only genuine Triumph accessories to those models approved by Triumph as listed in the associated Triumph fitting instructions.

The accessory kits covered in this instruction are designed for use on specific models of Triumph motorcycle. The accessory kits and the models applicable are listed at the start of the instruction. They should never be fitted to any other Triumph model or to any other manufacturer's motorcycle.

Fitting an accessory kit to a Triumph model not listed, or to any other manufacturer's motorcycle, will affect the performance, stability and handling of the motorcycle.

Failure to follow the advice above may lead to loss of motorcycle control which could result in serious injury or death.

⚠ WARNING

Always have Triumph approved parts, accessories and conversions fitted by a competent person with the specialist knowledge and technical understanding of motorcycles, such as an authorised Triumph dealer.

The fitment of parts, accessories and conversions by a person without the specialist knowledge and technical understanding of motorcycles may affect the handling, stability or other aspects of the motorcycle's operation.

Failure to follow the advice above may lead to loss of motorcycle control which could result in serious injury or death.

⚠ WARNING

A torque wrench of known accurate calibration must be used when fitting this accessory kit.

Failure to tighten any of the fasteners to the correct torque specification may affect motorcycle performance, handling and stability.

Failure to follow the advice above may lead to loss of motorcycle control which could result in serious injury or death.

⚠ WARNING

Make sure the motorcycle is stabilised and adequately supported.

Do not support the motorcycle on any ancillary component, the exhaust system or any other non structural parts of the motorcycle frame.

A correctly supported motorcycle will help prevent it from falling.

An unstable motorcycle may fall resulting in motorcycle damage, serious injury or death.

NOTICE

Triumph offers a broad range of approved genuine accessories for your motorcycle.

We cannot therefore cover all possible equipment variations in these instructions. For removal and installation of Triumph Genuine Accessories, always refer to the instructions supplied with the respective accessory kit.

To obtain additional copies of any Triumph accessory instructions, visit www.triumphinstructions.com or contact your authorised Triumph dealer.

Fitment of the Tyre Pressure Monitoring System (TPMS) Sensor

NOTICE

Before fitting this accessory kit, make sure the owner of the motorcycle has been informed of the warnings contained in these instructions.

NOTICE

The serial number for the tyre pressure sensor is printed on a label which is on the sensor.

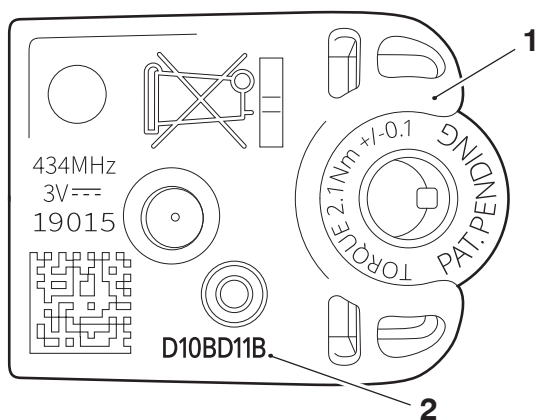
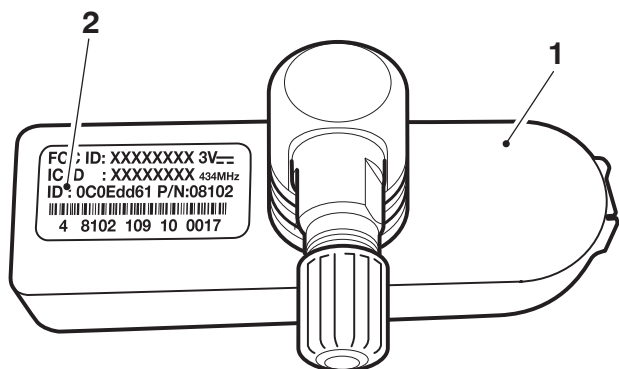
Make sure that the serial number for the front and rear sensor is recorded into the spaces provided in the Owner's Handbook prior to fitting the tyre.

NOTICE

The following procedure shows the installation of kit A9640056.

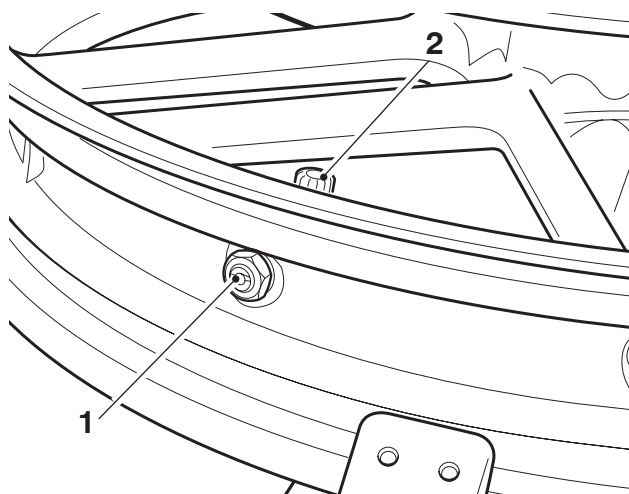
Although visually different the procedure is the same for all other kits.

1. Read and note the eight-digit wheel sensor ID from each sensor label taking care to accurately identify the front and rear sensors.



1. Tyre pressure sensor
2. ID number

2. Remove the rear wheel as described in the Service Manual.
3. Using proprietary tools, remove the tyre.
4. Remove and discard the original tyre valve from the wheel.



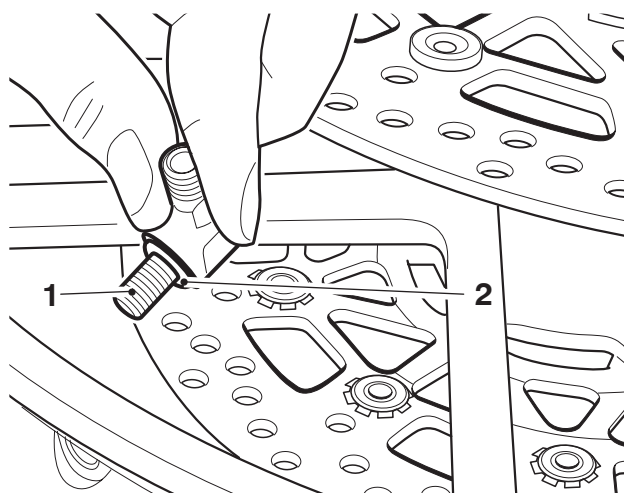
1. Fixing
2. Tyre valve, Speed Triple 1050 shown

⚠ WARNING

When the tyre valve is fitted and then removed, the seal on the valve must be replaced. Failure to change the seal may result in tyre pressure loss.

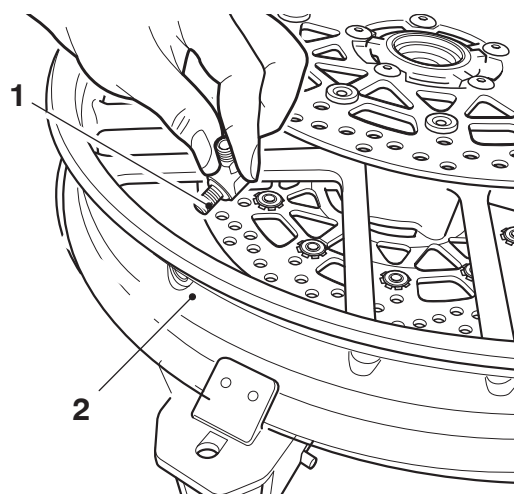
Failure to follow the advice above may lead to loss of motorcycle control which could result in serious injury or death.

5. Make sure the mounting hole on the wheel rim and the area around it is free from any dirt or grease.
6. Make sure a seal is fitted to the tyre valve from the kit.



1. Tyre valve, Speed Triple 1050 shown
2. Seal

7. Align the tyre valve to its mounting hole in the wheel rim. Make sure for kits A9640056, A9640057, A9640168, A9640169, A9640251, A9640252 the tyre valve is pointing to the right hand side of the wheel when fitted to the motorcycle.



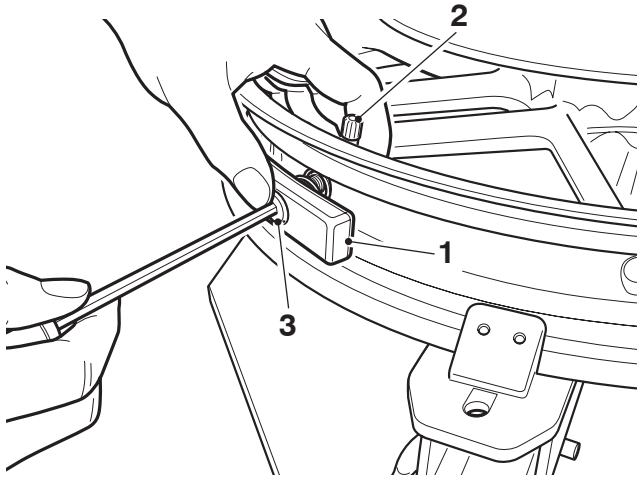
1. Tyre valve, Speed Triple 1050 shown
2. Hole

⚠ CAUTION

The edges of the tyre pressure sensor must be parallel to the walls of the wheel well. Damage to the sensor may result if the sensor is not correctly fitted.

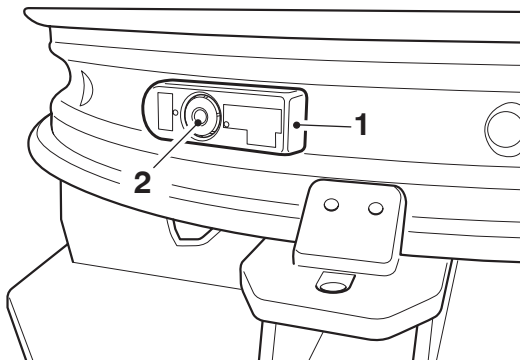
A9640056, A9640057, A9640105, A9640106, A9640168, A9640169, A9640170, A9640171 Only

8. Fit the sensor to the tyre valve and tighten the fixing of the sensor to **5 Nm**. Make sure that the sensor is not forced against the walls of the wheel well while tightening.



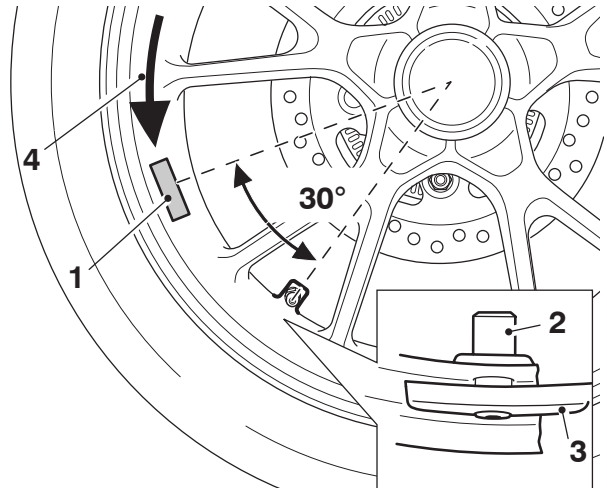
1. Sensor
2. Tyre valve, Speed Triple 1050 shown
3. Fixing

9. Make sure that the position of the sensor is parallel to the walls of the wheel well, as shown below.



1. Sensor
2. Fixing

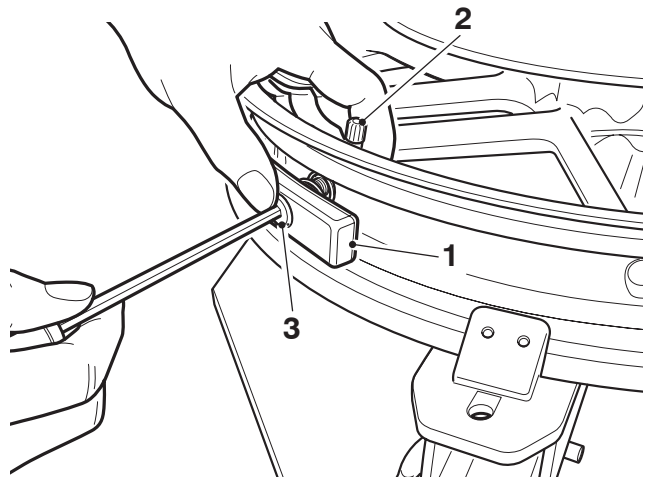
10. Refit the tyre. The tyre lever/install tool must start 30° away from the tyre valve and move away from the valve.



1. Position for tyre lever/install tool
2. Tyre valve
3. Tyre pressure sensor
4. Direction of wheel rotation

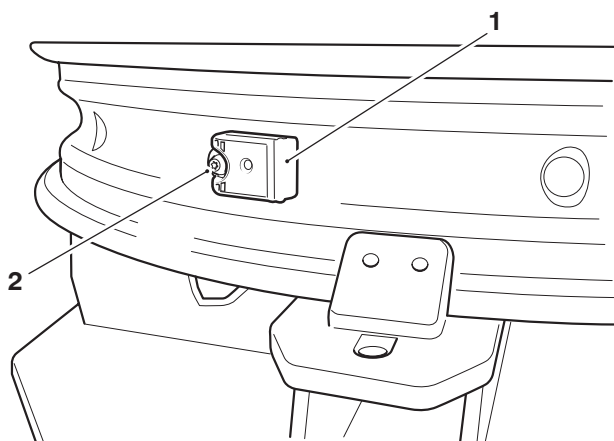
A9640251, A9640252, A9640253, A9640254 Only

11. Fit the sensor to the tyre valve and tighten the fixing of the sensor to **2.1 Nm**. Make sure that the sensor is not forced against the walls of the wheel well while tightening.



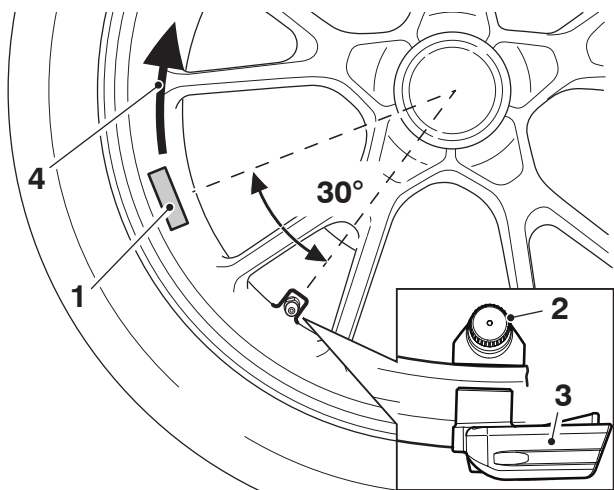
1. Sensor
2. Tyre valve
3. Fixing

12. Make sure that the position of the sensor is parallel to the walls of the wheel well, as shown below.



1. Sensor
2. Fixing

13. Refit the tyre. The tyre lever/install tool must start 30° away from the tyre valve and move away from the valve.



1. Position for tyre lever/install tool
2. Tyre valve
3. Tyre pressure sensor
4. Direction of wheel rotation

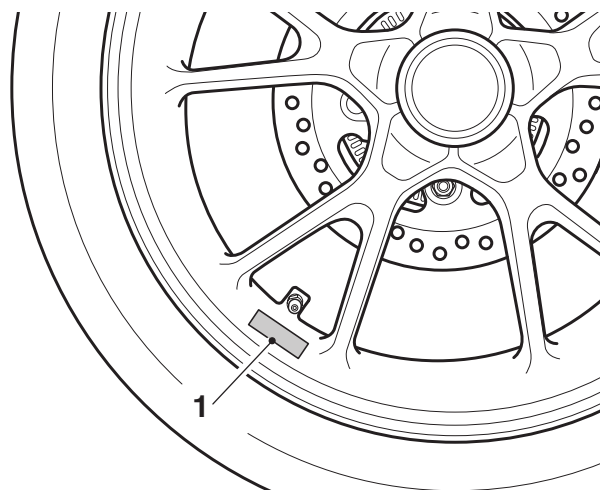
All kits

14. Check and, if necessary, adjust the balance of the wheel.
15. Refit the wheel, as described in the Service Manual.

NOTICE

Read the warning notices printed on the cleaning wipe packet in the fitting kit.

16. Clean the area of the wheel rim below the tyre valve for the warning label, as shown below.



1. Cleaned area, Speed Triple rear wheel shown

17. Remove the protective film from the back of the label and fit it to the cleaned area of the wheel rim. Apply firm and even pressure to the entire label to make sure a good bond is achieved.
18. Repeat steps 2 to 17 for the front wheel.

TPMS Operating Instructions

1. For full operating instructions of the TPMS, its warnings and instrument read-outs, refer to the Owner's Handbook.

⚠ WARNING

The daily check of tyre pressures must not be excluded because of the fitment of the TPMS.

Check the tyre pressure when the tyres are cold using an accurate tyre pressure gauge (see Owner's Handbook).

Use of the TPMS system to set inflation pressures may lead to incorrect tyre pressures.

Incorrect tyre pressures may lead to loss of motorcycle control which could result in serious injury or death

⚠ WARNING

The tyre pressure monitoring system is not to be used as a tyre pressure gauge when adjusting the tyre pressures.

For correct tyre pressures, always check the tyre pressures when the tyres are cold using an accurate tyre pressure gauge (see Owner's Handbook).

Incorrect tyre pressures may lead to loss of motorcycle control which could result in serious injury or death

⚠ WARNING

The rider must not rely on the tyre pressure warning light to maintain tyre pressures. The tyres and tyre pressures must be checked daily as detailed in the Owner's Handbook.

Incorrect tyre pressures may lead to loss of motorcycle control which could result in serious injury or death

TPMS Activation

NOTICE

Triumph diagnostic software version 2010_4 or higher is required to activate the tyre pressure monitoring system (TPMS).

1. Connect the Triumph diagnostic tool to the diagnostic socket on the motorcycle.
2. Navigate to the 'TPMS diagnostics - configure'.
3. Enable the TPMS.
4. Register the front and rear TPMS sensor identification numbers, making sure the diagnostic tool confirms that the identification numbers entered match the stored identification numbers after clicking 'OK'.
5. Navigate to the 'Instrument Diagnostics - configure'.
6. Select the desired 'Market Variation and Units of Pressure', then set 'Display Tyre Pressure' to 'Yes'. Click on 'Configure' to complete. The tyre pressure display should now be available in the information tray on the instrument display, usually in the fuel information section of the display.
7. Remove the Triumph diagnostic tool from the motorcycle.

NOTICE

The tyre pressure monitoring system (TPMS) will not transmit data until the motorcycle has reached approximately 19 mph (30 km/h +/- 10 km/h).

8. Ride the motorcycle at approximately 19 mph (30 km/h +/- 10 km/h) or above to confirm the tyre pressure monitoring system (TPMS) has activated.

⚠ WARNING

After fitting the accessory kit the motorcycle will exhibit new handling characteristics.

Operate the motorcycle in a safe area free from traffic to gain familiarity with any new characteristics.

Operation of the motorcycle when not familiar with any new handling characteristics may lead to loss of motorcycle control which could result in serious injury or death.

⚠ WARNING

If, after fitting this accessory kit, you have any doubt about the performance of any aspect of the motorcycle, contact a competent person with the specialist knowledge and technical understanding of motorcycles, such as an authorised Triumph dealer.

Riding a motorcycle when there is any doubt as to any aspect of the performance of the motorcycle may lead to loss of motorcycle control which could result in serious injury or death.

⚠ WARNING

Never ride an accessory-equipped motorcycle at speeds above 80 mph (130 km/h).

Remember that the 80 mph (130 km/h) limit will be reduced by the fitting of non-approved accessories, incorrect loading, worn tyres, overall motorcycle condition and poor road or weather conditions.

The presence of accessories will cause changes in the stability and handling of the motorcycle. Failure to allow for changes in motorcycle stability may lead to loss of motorcycle control which could result in serious injury or death.

⚠ WARNING

High-speed operation should only be attempted by riders who have been instructed in the techniques necessary for high-speed riding and are familiar with the motorcycle's characteristics in all conditions.

Only operate this Triumph motorcycle at high speed in closed-course, on-road competition or on closed-course racetracks.

High-speed operation in any other circumstances is dangerous and may lead to loss of motorcycle control which could result in serious injury or death.

NOTICE

The motorcycle must not be operated above the legal road speed limit except in closed-course conditions.