



Accessory Fitting Instructions

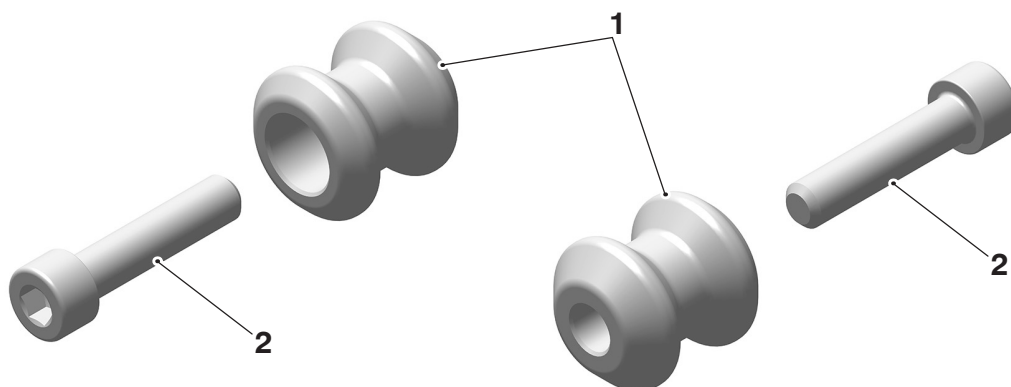
Thank you for choosing this Triumph genuine accessory kit. This accessory kit is the product of Triumph's use of proven engineering, exhaustive testing, and continuous striving for superior reliability, safety and performance.

Completely read all of these instructions before commencing the installation of the accessory kit in order to become thoroughly familiar with the kit's features and the installation process.

These instructions should be considered a permanent part of your accessory kit, and should remain with it even if your accessory equipped motorcycle is subsequently sold.

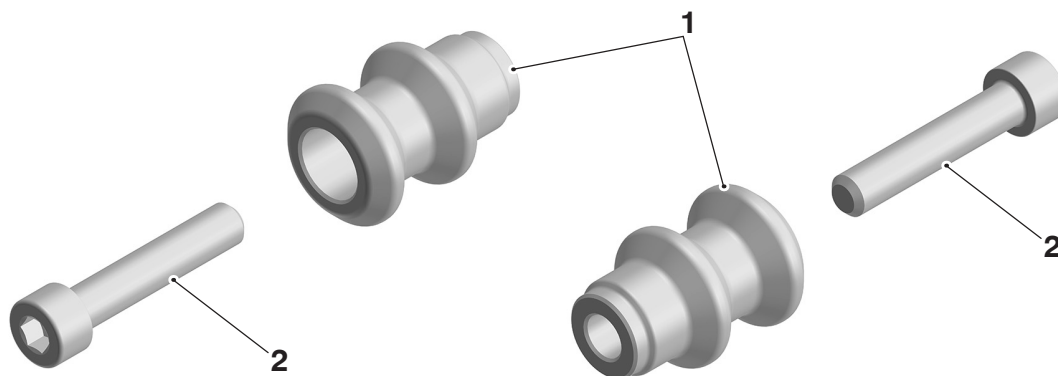
Paddock Stand Peg Kit	
Kit Number	Models
A9640048	Bonneville Bobber TFC, Daytona 660, Daytona 675 from VIN 459253, Daytona 675 SE from VIN 458187, Daytona 675 R, Street Triple R from VIN 452037 to VIN 560476, Thruxton 1200, Thruxton 1200 R, Thruxton RS, Scrambler 1200 XC, Scrambler 1200 XE, Scrambler 1200 X, Speed Twin, Tiger Sport from VIN AU7774
A9640049	Bonneville Bobber TFC, Daytona 675 from VIN 459253, Daytona 675 SE from VIN 458187, Daytona 675 R, Street Triple from VIN 459241 to VIN 560476, Street Triple R from VIN 452037 to VIN 560476, Thruxton 1200, Thruxton 1200 R, Thruxton RS, Scrambler 1200 XC to VIN BN8594, Scrambler 1200 XE to VIN BN8495, Speed Twin, Tiger Sport from VIN AU7774
A9640159	Bonneville Bobber, Bonneville Bobber Black, Bonneville Bobber TFC, Bonneville Speedmaster from VIN 739143, Street Triple RX, Street Triple from VIN 560477, Street Triple R from VIN 560477, Street Triple S, Street Triple S 660 cc, Street Triple R from VIN 793032, Street Triple RS, Street Triple RS Moto2™, Street Triple R LRH (Low Ride Height)
A9640082	Bonneville Bobber, Bonneville Bobber Black, Bonneville Bobber TFC, Bonneville Speedmaster from VIN 739143, Daytona 660, Street Triple RX, Street Triple from VIN 560477, Street Triple R from VIN 560477, Street Triple S, Street Triple S 660 cc, Street Triple R from VIN 793032, Street Triple RS, Street Triple RS Moto2™, Street Triple R LRH (Low Ride Height), Trident from VIN AC6898
A9640083	Bonneville Bobber TFC, Daytona 660, Street Triple RX, Street Triple from VIN 560477, Street Triple R from VIN 560477, Street Triple S, Street Triple S 660 cc, Street Triple R from VIN 793032, Street Triple RS, Street Triple RS Moto2™, Street Triple R LRH (Low Ride Height), Trident from VIN AC6898
A9640167	Bonneville Bobber TFC, Daytona 675 from VIN 459253, Daytona 675 SE from VIN 458187, Daytona 675 R, Street Triple from VIN 459241 to VIN 560476, Street Triple R from VIN 452037 to VIN 560476, Thruxton 1200, Thruxton 1200 R, Thruxton RS, Scrambler 1200 XC to VIN BN8594, Scrambler 1200 XE to VIN BN8495, Speed Twin, Tiger Sport from VIN AU7774

Parts Supplied: A9640048, A9640049, A9640167



1. Peg	1 off	2. Fixing, M8 x 35 mm	2 off
--------	-------	-----------------------	-------

Parts Supplied: A9640082, A9640083, A9640159



1. Peg	1 off	2. Fixing, M8 x 35 mm	2 off
--------	-------	-----------------------	-------

⚠ WARNING

Fit only genuine Triumph accessories to those models approved by Triumph as listed in the associated Triumph fitting instructions.

The accessory kits covered in this instruction are designed for use on specific models of Triumph motorcycle. The accessory kits and the models applicable are listed at the start of the instruction. They should never be fitted to any other Triumph model or to any other manufacturer's motorcycle.

Fitting an accessory kit to a Triumph model not listed, or to any other manufacturer's motorcycle, will affect the performance, stability and handling of the motorcycle.

Failure to follow the advice above may lead to loss of motorcycle control which could result in serious injury or death.

⚠ WARNING

Always have Triumph approved parts, accessories and conversions fitted by a competent person with the specialist knowledge and technical understanding of motorcycles, such as an authorised Triumph dealer.

The fitment of parts, accessories and conversions by a person without the specialist knowledge and technical understanding of motorcycles may affect the handling, stability or other aspects of the motorcycle's operation.

Failure to follow the advice above may lead to loss of motorcycle control which could result in serious injury or death.

⚠ WARNING

A torque wrench of known accurate calibration must be used when fitting this accessory kit.

Failure to tighten any of the fasteners to the correct torque specification may affect motorcycle performance, handling and stability.

Failure to follow the advice above may lead to loss of motorcycle control which could result in serious injury or death.

⚠ WARNING

Make sure the motorcycle is stabilised and adequately supported.

Do not support the motorcycle on any ancillary component, the exhaust system or any other non structural parts of the motorcycle frame.

A correctly supported motorcycle will help prevent it from falling.

An unstable motorcycle may fall resulting in motorcycle damage, serious injury or death.

NOTICE

Triumph offers a broad range of approved genuine accessories for your motorcycle.

We cannot therefore cover all possible equipment variations in these instructions. For removal and installation of Triumph Genuine Accessories, always refer to the instructions supplied with the respective accessory kit.

To obtain additional copies of any Triumph accessory instructions, visit www.triumphinstructions.com or contact your authorised Triumph dealer.

⚠ WARNING

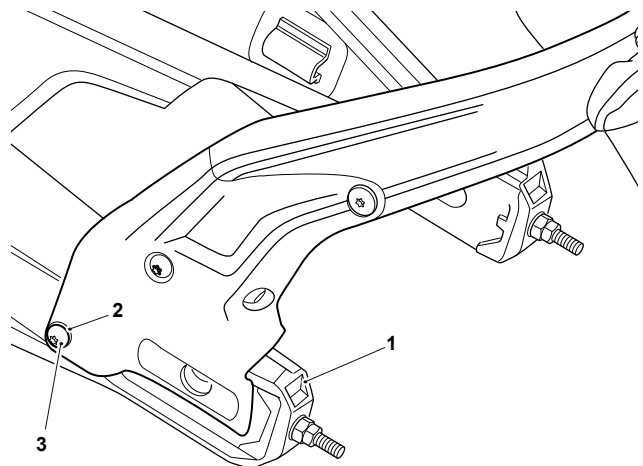
Make sure the rear wheel remains stationary during the fitment of the paddock stand peg kit. Serious injury could result from contact with the drive chain and rear sprocket whilst the rear wheel is in motion.

NOTICE

Some models may require the removal of plastic blanking plugs from peg mounting locations on the swinging arm before fitment of the pegs.

Trident Models from VIN AC6898 Only

1. Remove the fixing and washer from the peg mounting position on the left and right hand sides of the swinging arm, as shown below. Retain the fixing and washer for reuse if the motorcycle is to be returned to its original condition.



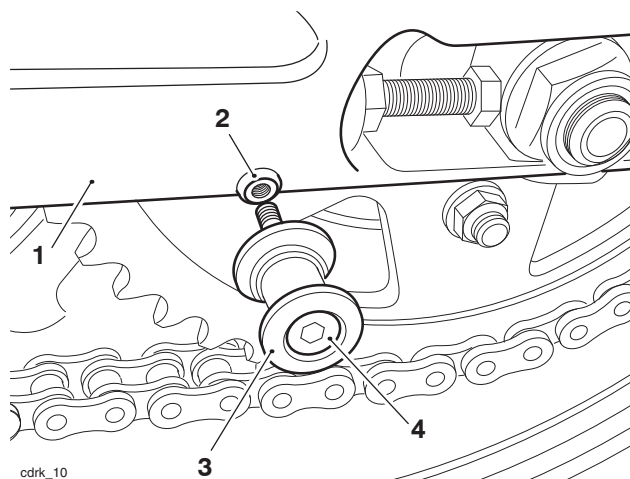
- 1. Swing arm, left hand side**
- 2. Washer**
- 3. Fixing**

2. Collect the pegs and fixings from the kit.
3. Fit one of the pegs to the mounting on the left hand side of the swinging arm, tighten the fixing to **32 Nm**.

4. Fit the remaining peg to the mounting on the right hand side of the swinging arm, tighten the fixing to **24 Nm**.
5. The motorcycle may now be supported on a paddock stand following the manufacturer's instructions for the stand.

All Other Models

6. Collect the pegs and fixings from the kit.
7. Fit one of the pegs to the mounting on the left hand side of the swinging arm, tighten the fixing to **24 Nm**.



1. Swing arm, left hand side shown
2. Mounting
3. Peg
4. Screw

8. Fit the other peg to the mounting on the right hand side of the swinging arm, tighten the fixing to **24 Nm**.
9. The motorcycle may now be supported on a paddock stand following the manufacturer's instructions for the stand.

⚠ WARNING

After fitting the accessory kit the motorcycle will exhibit new handling characteristics.

Operate the motorcycle in a safe area free from traffic to gain familiarity with any new characteristics.

Operation of the motorcycle when not familiar with any new handling characteristics may lead to loss of motorcycle control which could result in serious injury or death.

⚠ WARNING

If, after fitting this accessory kit, you have any doubt about the performance of any aspect of the motorcycle, contact a competent person with the specialist knowledge and technical understanding of motorcycles, such as an authorised Triumph dealer.

Riding a motorcycle when there is any doubt as to any aspect of the performance of the motorcycle may lead to loss of motorcycle control which could result in serious injury or death.

⚠ WARNING

Never ride an accessory-equipped motorcycle at speeds above 80 mph (130 km/h).

Remember that the 80 mph (130 km/h) limit will be reduced by the fitting of non-approved accessories, incorrect loading, worn tyres, overall motorcycle condition and poor road or weather conditions.

The presence of accessories will cause changes in the stability and handling of the motorcycle. Failure to allow for changes in motorcycle stability may lead to loss of motorcycle control which could result in serious injury or death.

⚠ WARNING

High-speed operation should only be attempted by riders who have been instructed in the techniques necessary for high-speed riding and are familiar with the motorcycle's characteristics in all conditions.

Only operate this Triumph motorcycle at high speed in closed-course, on-road competition or on closed-course racetracks.

High-speed operation in any other circumstances is dangerous and may lead to loss of motorcycle control which could result in serious injury or death.

NOTICE

The motorcycle must not be operated above the legal road speed limit except in closed-course conditions.