



Accessory Fitting Instructions

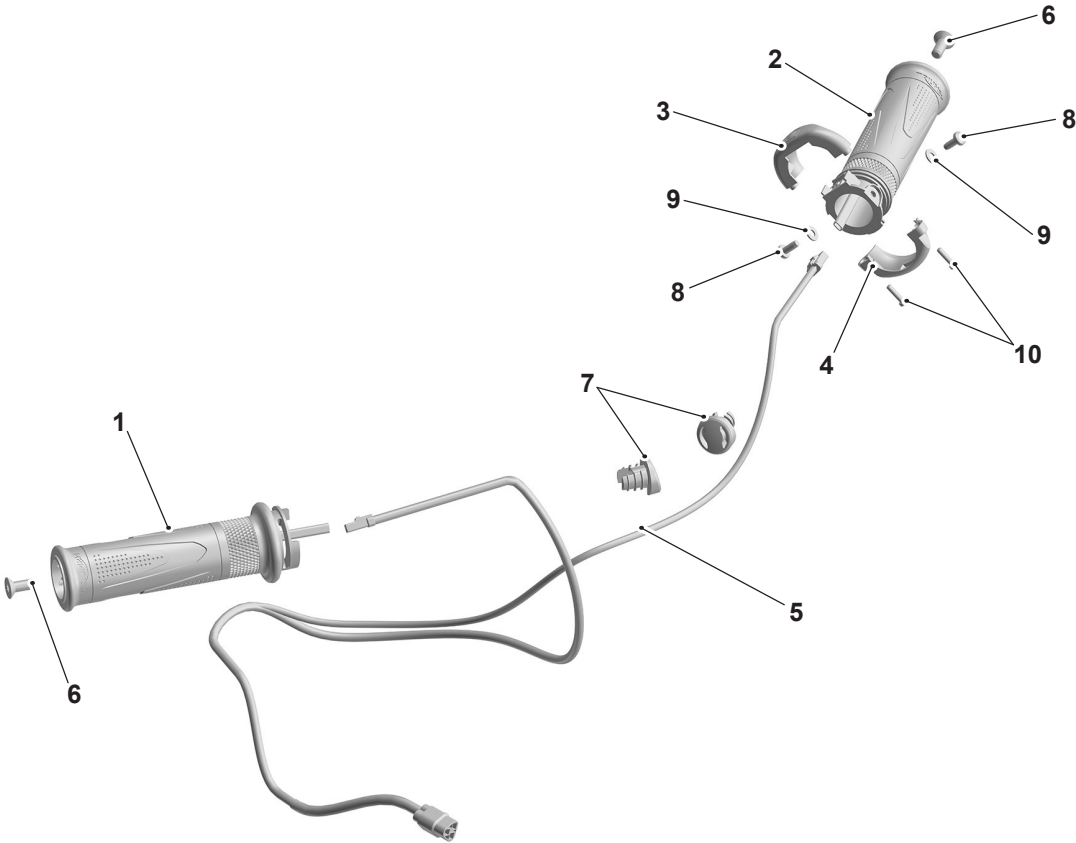
Thank you for choosing this Triumph genuine accessory kit. This accessory kit is the product of Triumph's use of proven engineering, exhaustive testing, and continuous striving for superior reliability, safety and performance.

Completely read all of these instructions before commencing the installation of the accessory kit in order to become thoroughly familiar with the kit's features and the installation process.

These instructions should be considered a permanent part of your accessory kit, and should remain with it even if your accessory equipped motorcycle is subsequently sold.

Heated Grip Kit	
Kit Number	Models
A9639102	Daytona 660

Parts supplied



1. Heated grip, right hand	1 off	6. Fixing, M6 x 16 mm	2 off
2. Heated grip, left hand	1 off	7. Bar end plug	2 off
3. Upper switch housing, rear	1 off	8. Fixing, M4 x 10 mm	2 off
4. Upper switch housing, front	1 off	9. Washer	2 off
5. Subharness	1 off	10. Screw, Torx head self-tapping	2 off

⚠ WARNING

Fit only genuine Triumph accessories to those models approved by Triumph as listed in the associated Triumph fitting instructions.

The accessory kits covered in this instruction are designed for use on specific models of Triumph motorcycle. The accessory kits and the models applicable are listed at the start of the instruction. They should never be fitted to any other Triumph model or to any other manufacturer's motorcycle.

Fitting an accessory kit to a Triumph model not listed, or to any other manufacturer's motorcycle, will affect the performance, stability and handling of the motorcycle.

Failure to follow the advice above may lead to loss of motorcycle control which could result in serious injury or death.

⚠ WARNING

Always have Triumph approved parts, accessories and conversions fitted by a competent person with the specialist knowledge and technical understanding of motorcycles, such as an authorised Triumph dealer.

The fitment of parts, accessories and conversions by a person without the specialist knowledge and technical understanding of motorcycles may affect the handling, stability or other aspects of the motorcycle's operation.

Failure to follow the advice above may lead to loss of motorcycle control which could result in serious injury or death.

⚠ WARNING

A torque wrench of known accurate calibration must be used when fitting this accessory kit.

Failure to tighten any of the fasteners to the correct torque specification may affect motorcycle performance, handling and stability.

Failure to follow the advice above may lead to loss of motorcycle control which could result in serious injury or death.

⚠ WARNING

Make sure the motorcycle is stabilised and adequately supported.

Do not support the motorcycle on any ancillary component, the exhaust system or any other non structural parts of the motorcycle frame.

A correctly supported motorcycle will help prevent it from falling.

An unstable motorcycle may fall resulting in motorcycle damage, serious injury or death.

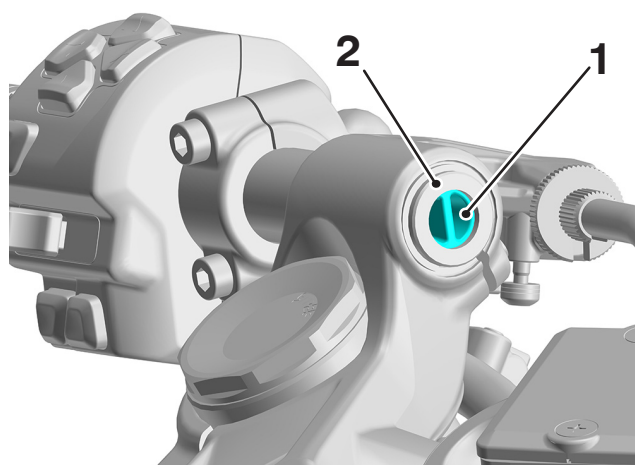
NOTICE

Triumph offers a broad range of approved genuine accessories for your motorcycle.

We cannot therefore cover all possible equipment variations in these instructions. For removal and installation of Triumph Genuine Accessories, always refer to the instructions supplied with the respective accessory kit.

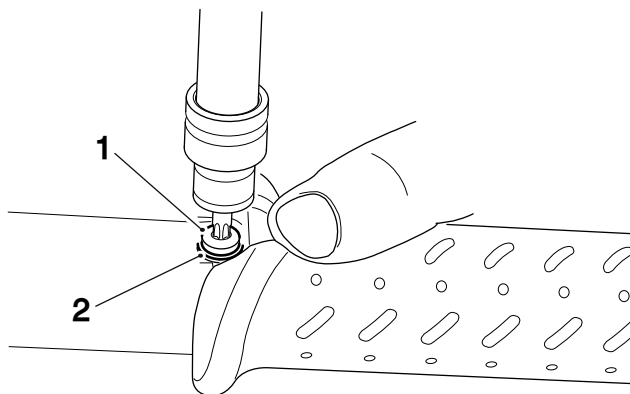
To obtain additional copies of any Triumph accessory instructions, visit www.triumphinstructions.com or contact your authorised Triumph dealer.

1. Remove the seat as described in the Service Manual.
2. Disconnect the battery as described in the Service Manual.
3. Remove the bar end finishers from the left and right hand handlebars and retain for reuse if the motorcycle is to be returned to its original condition. Discard the fixings.
4. Remove the bar end plugs from the inner end of the left and right hand handlebars. Retain the plugs for reuse if the motorcycle is to be returned to its original condition.



1. Bar end plug (left side shown)
2. Handlebar (left side shown)

5. Release the two fixings securing the left hand handlebar grip to the handlebar, and slide the handlebar grip off the handlebar. Retain the grip for reuse if the motorcycle is to be returned to its original condition. Discard the fixings and washers.



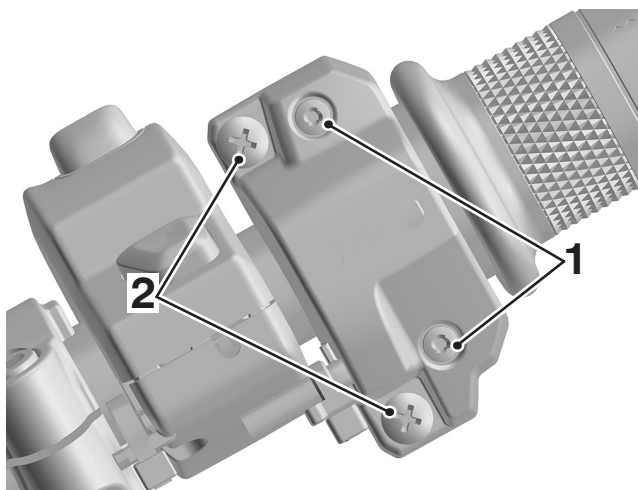
1. Fixing (one of two shown)
2. Washer (one of two shown)

NOTICE

Do not loosen or remove the anti-tamper fixings on the twist grip housing.

If the anti-tamper screws are loosened or removed, any warranty claims for the twist grip housing will not be honoured.

6. Remove the fixings and remove the clamp for the twist grip housing from the right hand side handlebar.



1. Anti-tamper fixings
2. Fixings

NOTICE

Note the position and orientation of the twist grip to its housing for installation.

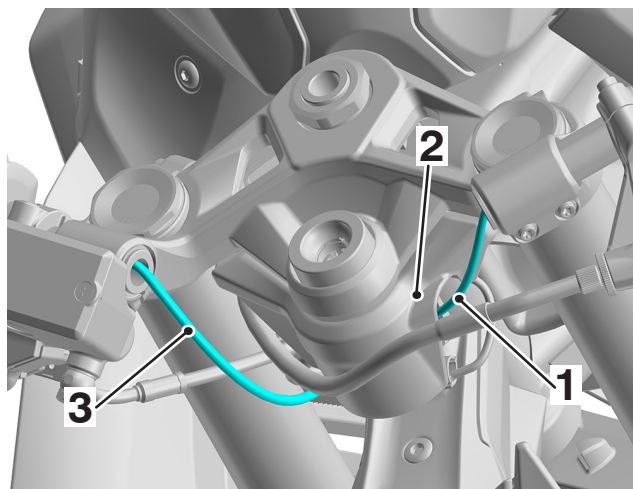
7. Slide the twist grip assembly off the handlebar.
8. Remove the twist grip from the twist grip clamp by rotating until the twist grip is fully disengaged. Retain the twist grip if the motorcycle is to be returned to its original condition.
9. Collect the subharness from the kit.

NOTICE

The subharness lead with the 2 pin connector is routed to the right hand (throttle) side of the handlebar.

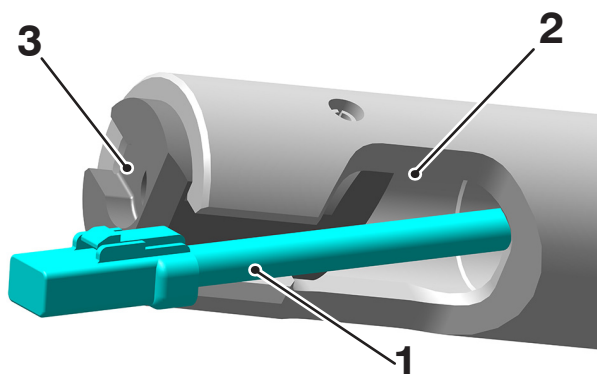
The subharness lead with the 3 pin connector is routed to the left hand (clutch) side of the handlebar.

10. Route the subharness with the 3 pin heated grip connector under ignition barrel cover and into the end of the left hand handlebar.
11. Route the subharness with the 2 pin connector into the end of the right hand handlebar.



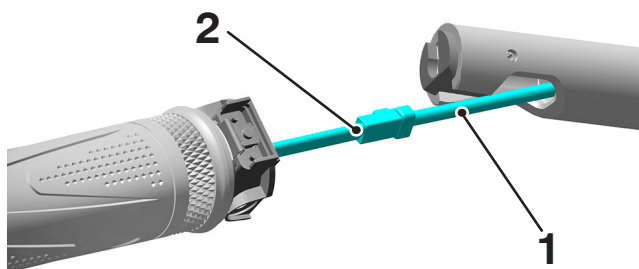
1. Left hand heated grip harness
2. Ignition barrel cover
3. Right hand heated grip harness

12. Route the 3 pin heated grip subharness connector through the left hand handlebar and out of the slot in the handlebar end weight mounting area of the handlebar.



- 1. Subharness
- 2. Slot, handlebar
- 3. Insert

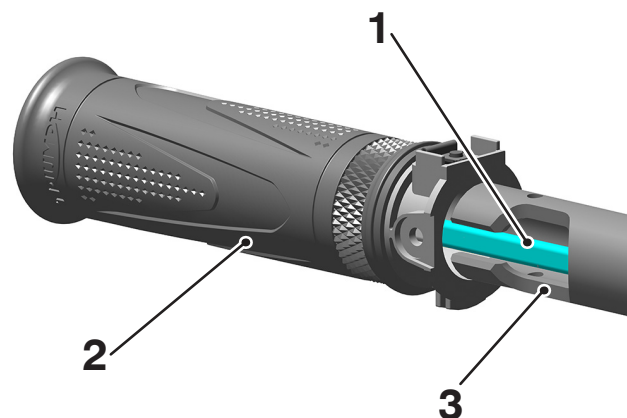
13. Collect the left hand heated grip from the kit and connect to the 3 pin subharness.



- 1. Subharness
- 2. Heated grip connector

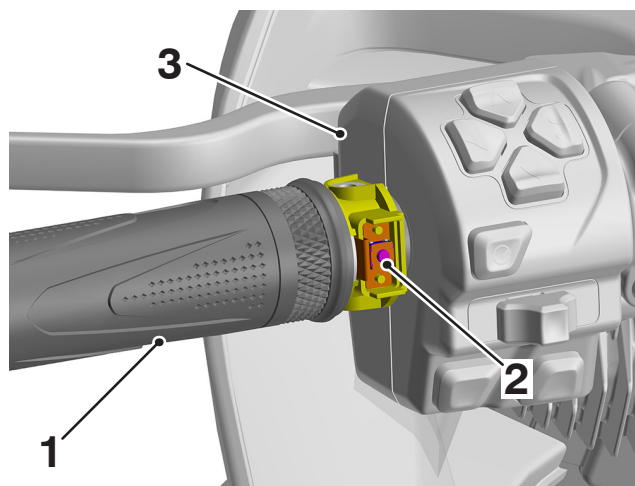
NOTICE

A wiring harness which becomes trapped or kinked during installation, or motorcycle operation, may result in wiring harness damage and electrical malfunctions.



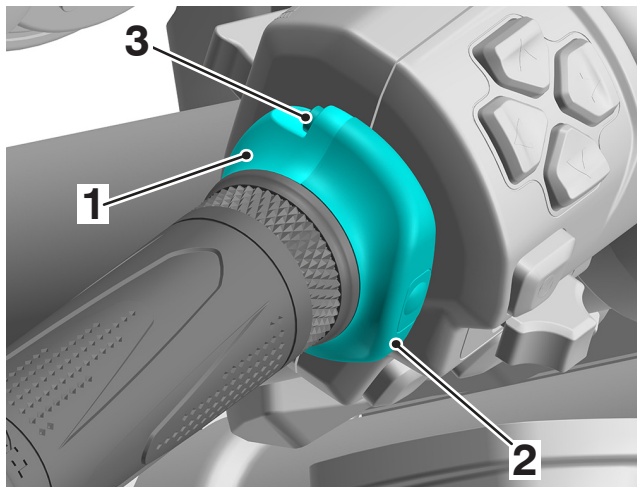
- 1. Wires
- 2. Heated grip
- 3. Handlebar

14. Fit the heated grip onto the handlebar by carefully pulling the subharness wires back through the hole in the underside of the handlebar.
15. Make sure the subharness/heated grip connection remains in position inside the handlebar and the wires do not become trapped, and slide on until fully engaged.
16. Make sure the grip is orientated with the switch contacts facing the rider. Secure the new grip with the two M4 x10 mm fixings from the kit and tighten to **3 Nm**.



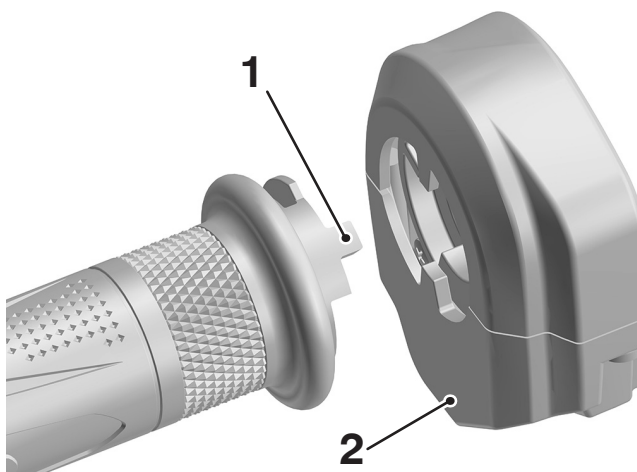
- 1. Heated grip
- 2. Switch contacts
- 3. Switchcube

17. Collect the front and rear switch housing and self tapping screws from the kit, and fit over the heated grip in the orientation shown. Tighten the screws to **1 Nm**.



1. Switch housing, rear
2. Switch housing, front
3. Self-tapping screw

18. Collect the right hand heated grip from the kit and align the heated grip lugs with the slots in the twist grip clamp.



1. Heated grip lugs
2. Twist grip clamp

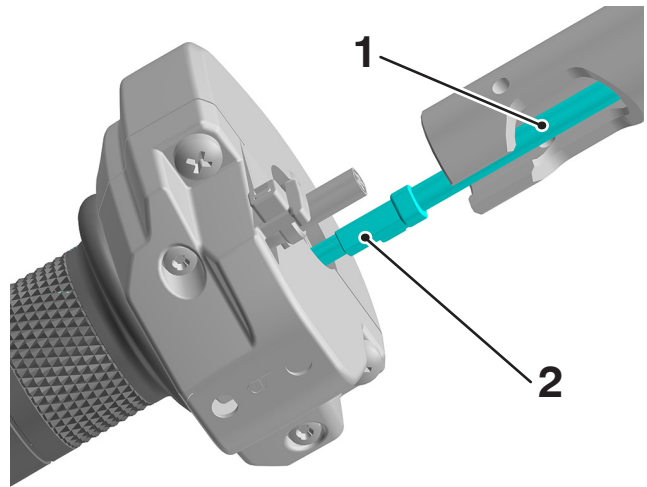
19. Feed the heated grip harness through the centre of the twist grip clamp.

NOTICE

A wiring harness which becomes trapped or kinked during installation, or motorcycle operation, may result in wiring harness damage and electrical malfunctions.

20. Engage the heated grip with the twist grip clamp making sure the harness does not become trapped. Rotate the heated grip in the clamp until it is fully engaged.

21. Route the 2 pin subharness connector through the inner end of right hand handlebar and out through the slot at the handlebar end weight mounting area.
22. Attach the subharness connector to the heated grip connector.



1. Subharness
2. Heated grip connector

23. Fit the heated grip onto the handlebar by carefully pulling the subharness wires back through the hole in the underside of the handlebar.
24. Refit the twist grip housing in the orientation noted during removal and making sure that the locating lug fits into its hole on the handlebar. Secure using the original fixings tightening the upper fixing first to **3.5 Nm**.

⚠ WARNING

Check the operation of the right hand heated grip (twist grip).

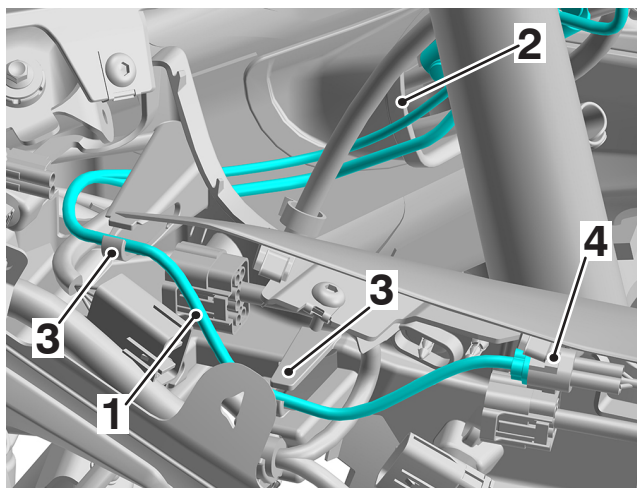
Make sure that the rearward and forward movement of the twist grip is smooth, without tightness, and will return to the throttle closed position when released.

A tight or stuck twist grip may lead to loss of motorcycle control which could result in serious injury or death.

25. Make sure there is enough slack in the wires for the twist grip to rotate and the wires not to become trapped.
26. Collect the M6 x 16 mm fixing from the kit and refit the bar end finishers for the left and right hand handlebars. Tighten the fixings to **5 Nm**.
27. Collect the bar end plugs from the kit and fit to the inner end of the left and right hand handlebars.

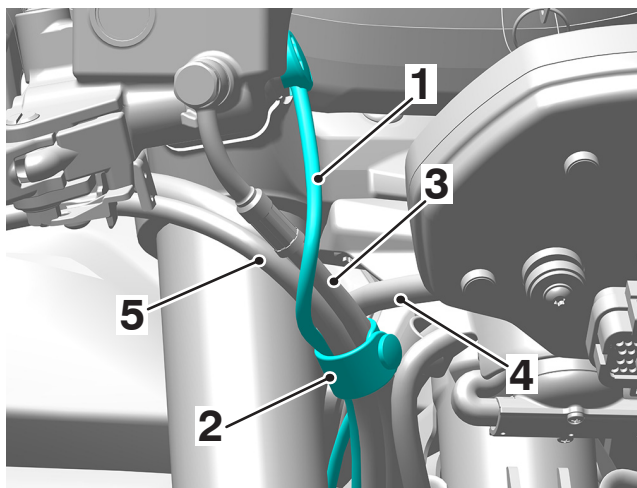
Routing the Heated Grip Subharness

28. Remove the right hand side faring as described in the Service Manual.
29. Route the heated grip harness alongside the headstock guide and through the guides on the harness retention moulding.
30. Connect to the heated grip subharness to the main harness connector.



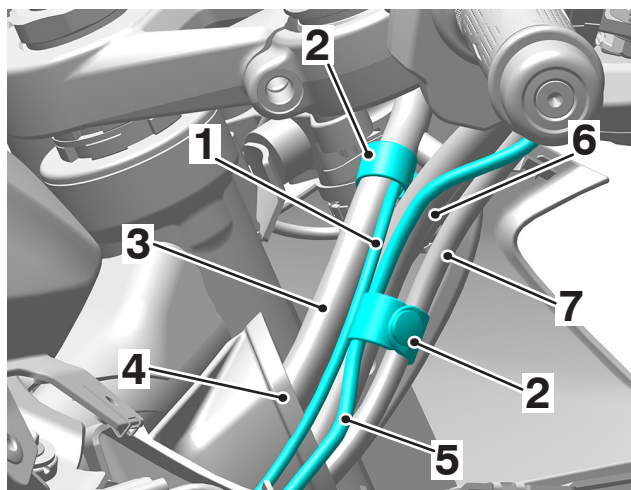
1. Heated grip subharness
2. Headstock guide
3. Guides, harness retention moulding
4. Main harness connector

31. Secure the upper part of the right hand grip harness to the brakeline cable using the original rubber strap (cockpit housing omitted for clarity).



1. Right hand heated grip harness
2. Rubber strap, original
3. Brakeline
4. Clutch cable
5. Right hand switch cube harness

32. Secure the lower part of the right hand grip harness as shown below.
33. Secure the left hand grip harness to the left hand switch cube harness routed through the headstock cable guides using the original rubber strap (front fork omitted for clarity).



1. Left hand heated grip harness
2. Rubber strap, original
3. Left hand switch cube harness
4. Headstock cable guide
5. Right hand heated grip harness
6. Clutch cable
7. Right hand switch cube harness

⚠ WARNING

Always make sure that the newly installed wiring does not chafe against other parts of the motorcycle such that it may be rubbed through and cause an electrical problem.

Always make sure that the newly installed wiring will not restrict the steering movement.

Both conditions may result in a fire or may lead to loss of motorcycle control which could result in serious injury or death.

34. Move the handlebars to the left and right full lock checking that the cables and harness to not bind. Rectify if required.
35. Refit the right hand side faring as described in the Service Manual.
36. Reconnect the battery as described in the Service Manual.
37. Refit the seat as described in the Service Manual.

Heated Grip System Testing

DANGER

Never start the engine or run the engine in a confined area.

Always operate the motorcycle in the open air or in an area with adequate ventilation.

Exhaust fumes are poisonous and will cause loss of consciousness and death within a short period of time.

NOTICE

During the initial engine start up phase the engine control module will run a self check of the heated grip.

1. Start the engine and allow to idle to avoid discharging the battery.
2. Check the temperature of the heated grip increases.
3. Fuse number 4 of the front fuse box protects the heated grip circuit. Refer to the label in the fuse box lid for fuse amperage.

Operation

The heated grips work when the ignition is switched on. However, it is recommended that they are only used when the engine is running to avoid draining the battery.

The heated grips have three operating modes, HIGH, MEDIUM and LOW. Press the heated grip button and the status will be shown on the display screen as a heated grip symbol in different colours, as described below:

- Press once - HIGH: RED symbol with 3 dots.
- Press Twice - MEDIUM: ORANGE symbol with 2 dots.
- Press Three times - LOW: YELLOW symbol with 1 dot.

To switch OFF the heated grips, press and release the button until a GREY heated grip symbol is shown in the display screen. After three seconds, the heated grips symbol will disappear from the display screen. The heated grips are also switched off when the ignition is switched off.

For maximum benefit from cold conditions, use the heated grips in the HIGH status initially and when the grips have warmed up, change the status to LOW.

Automatic Shutdown

If heated grips are fitted and are on with the engine not running, over a period of time, the battery voltage may drop below 11.8 Volts and 'LoBatt' is then shown in the display screen for three seconds.

If the heated grips are on and 'LoBatt' is shown, then the heated grips are automatically switched off to prevent further discharge of the battery. It is not possible to resume heated grip operation until the engine has been running and the battery voltage has increased above 11.8 Volts.

In the event of a short circuit issue, 'HgrOFF' is shown in the display screen and the heated grips are automatically switched off. The heated grips can be switched back on after 25 seconds

WARNING

After fitting the accessory kit the motorcycle will exhibit new handling characteristics.

Operate the motorcycle in a safe area free from traffic to gain familiarity with any new characteristics.

Operation of the motorcycle when not familiar with any new handling characteristics may lead to loss of motorcycle control which could result in serious injury or death.

WARNING

If, after fitting this accessory kit, you have any doubt about the performance of any aspect of the motorcycle, contact a competent person with the specialist knowledge and technical understanding of motorcycles, such as an authorised Triumph dealer.

Riding a motorcycle when there is any doubt as to any aspect of the performance of the motorcycle may lead to loss of motorcycle control which could result in serious injury or death.

WARNING

Never ride an accessory-equipped motorcycle at speeds above 80 mph (130 km/h).

Remember that the 80 mph (130 km/h) limit will be reduced by the fitting of non-approved accessories, incorrect loading, worn tyres, overall motorcycle condition and poor road or weather conditions.

The presence of accessories will cause changes in the stability and handling of the motorcycle. Failure to allow for changes in motorcycle stability may lead to loss of motorcycle control which could result in serious injury or death.

⚠ WARNING

High-speed operation should only be attempted by riders who have been instructed in the techniques necessary for high-speed riding and are familiar with the motorcycle's characteristics in all conditions.

Only operate this Triumph motorcycle at high speed in closed-course, on-road competition or on closed-course racetracks.

⚠ WARNING Continued

High-speed operation in any other circumstances is dangerous and may lead to loss of motorcycle control which could result in serious injury or death.

NOTICE

The motorcycle must not be operated above the legal road speed limit except in closed-course conditions.