



Accessory Fitting Instructions

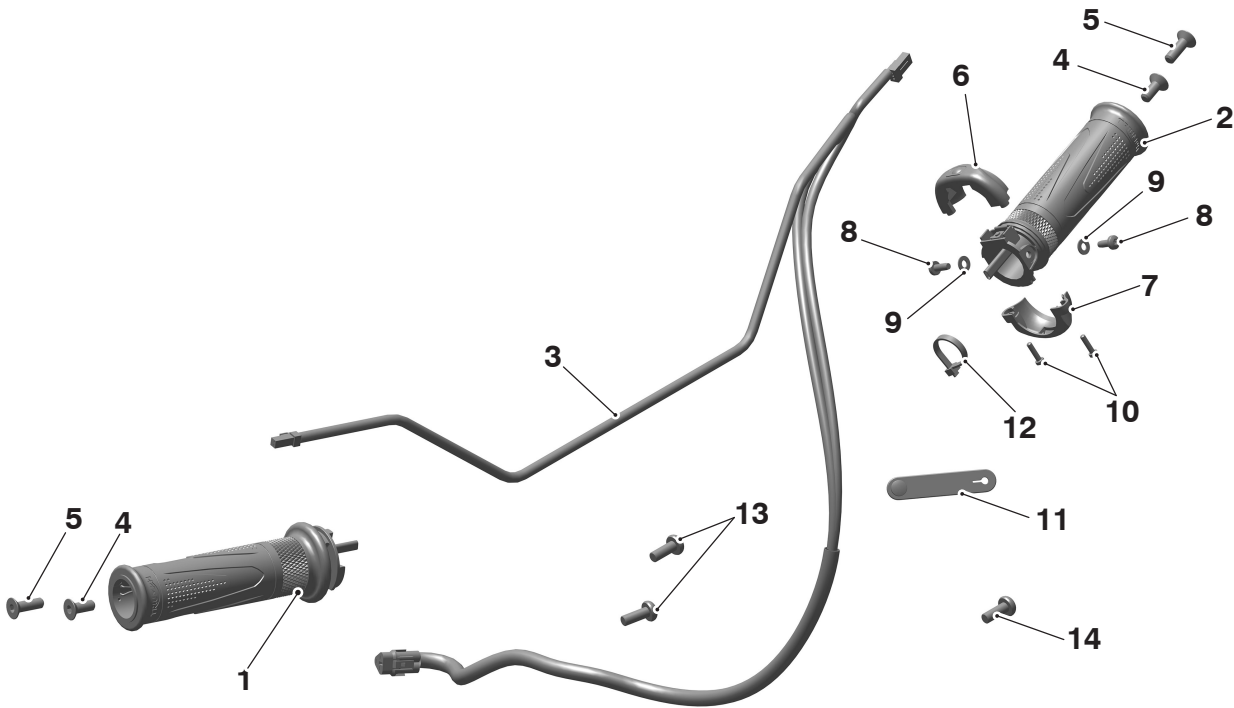
Thank you for choosing this Triumph genuine accessory kit. This accessory kit is the product of Triumph's use of proven engineering, exhaustive testing, and continuous striving for superior reliability, safety and performance.

Completely read all of these instructions before commencing the installation of the accessory kit in order to become thoroughly familiar with the kit's features and the installation process.

These instructions should be considered a permanent part of your accessory kit, and should remain with it even if your accessory equipped motorcycle is subsequently sold.

Heated Grip Kit	
Kit Number	Models
A9638332	Scrambler 1200 X, Scrambler 1200 XE from VIN BP0885

Parts Supplied



1. Heated grip, right hand	1 off	8. Fixing, M4 x 10 mm	2 off
2. Heated grip, left hand	1 off	9. Washer	2 off
3. Subharness	1 off	10. Screw, Torx head self-tapping	2 off
4. Fixing, M6 x 16 mm	2 off	11. Rubber strap	1 off
5. Fixing, M6 x 20 mm	2 off	12. Cable tie	1 off
6. Switch housing, upper	1 off	13. Fixing, M6 x 16 mm	2 off
7. Switch housing, lower	1 off	14. Fixing, M6 x 16 mm (where provided)	1 off

⚠ WARNING

Fit only genuine Triumph accessories to those models approved by Triumph as listed in the associated Triumph fitting instructions.

The accessory kits covered in this instruction are designed for use on specific models of Triumph motorcycle. The accessory kits and the models applicable are listed at the start of the instruction. They should never be fitted to any other Triumph model or to any other manufacturer's motorcycle.

Fitting an accessory kit to a Triumph model not listed, or to any other manufacturer's motorcycle, will affect the performance, stability and handling of the motorcycle.

Failure to follow the advice above may lead to loss of motorcycle control which could result in serious injury or death.

⚠ WARNING

Always have Triumph approved parts, accessories and conversions fitted by a competent person with the specialist knowledge and technical understanding of motorcycles, such as an authorised Triumph dealer.

The fitment of parts, accessories and conversions by a person without the specialist knowledge and technical understanding of motorcycles may affect the handling, stability or other aspects of the motorcycle's operation.

Failure to follow the advice above may lead to loss of motorcycle control which could result in serious injury or death.

⚠ WARNING

A torque wrench of known accurate calibration must be used when fitting this accessory kit.

Failure to tighten any of the fasteners to the correct torque specification may affect motorcycle performance, handling and stability.

Failure to follow the advice above may lead to loss of motorcycle control which could result in serious injury or death.

⚠ WARNING

Make sure the motorcycle is stabilised and adequately supported.

Do not support the motorcycle on any ancillary component, the exhaust system or any other non structural parts of the motorcycle frame.

A correctly supported motorcycle will help prevent it from falling.

An unstable motorcycle may fall resulting in motorcycle damage, serious injury or death.

NOTICE

Triumph offers a broad range of approved genuine accessories for your motorcycle.

We cannot therefore cover all possible equipment variations in these instructions. For removal and installation of Triumph Genuine Accessories, always refer to the instructions supplied with the respective accessory kit.

To obtain additional copies of any Triumph accessory instructions, visit www.triumphinstructions.com or contact your authorised Triumph dealer.

Heated Grip Kit Installation

⚠ WARNING

Always make sure that the newly installed wiring does not chafe against other parts of the motorcycle such that it may be rubbed through and cause an electrical problem.

Always make sure that the newly installed wiring will not restrict the steering movement.

Both conditions may result in a fire or may lead to loss of motorcycle control which could result in serious injury or death.

⚠ CAUTION

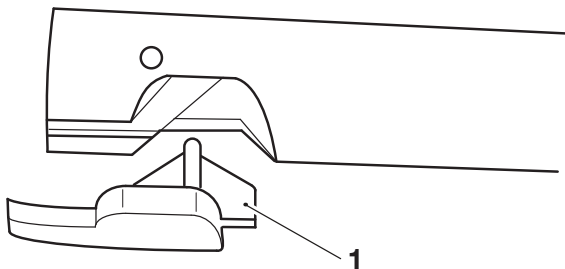
If the engine has recently been running, the exhaust components may be hot to the touch.

To avoid skin damage, always allow the hot parts to cool before touching the exhaust system.

Contact with the hot components may cause minor to moderate injury to exposed skin.

1. Remove the seat, as described in the Service Manual.
2. Disconnect the battery, negative (black) lead first, as described in the Service Manual.
3. Remove the fuel tank, as described in the Service Manual.
4. Remove the left hand and right hand bar end finishers and handguards as described in the Service Manual.
5. Slide the left hand grip off the handlebar. Retain the grip for reuse if the motorcycle is to be returned to its original condition.

6. Remove the plastic insert from the end of the left hand side of the handlebars, as shown. Retain the plastic insert for reuse if the motorcycle is to be returned to its original condition.



1. Plastic insert

7. Remove the twist grip from the right hand side of the handlebars, as described in the Service Manual. Retain the twist grip for reuse if the motorcycle is to be returned to its original condition.
8. Collect the subharness provided in the kit.

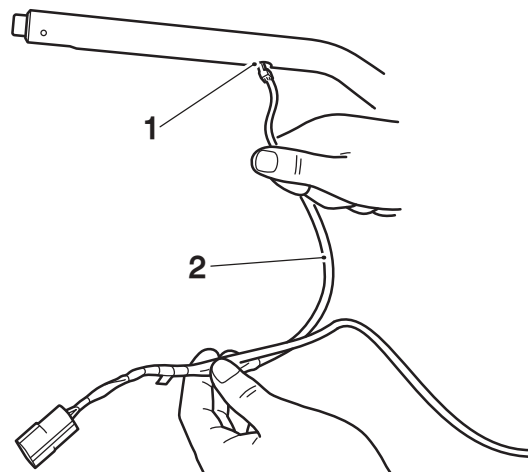
NOTICE

The subharness lead with the 2 pin connector is routed to the right hand (throttle) side of the handlebar.

The subharness lead with the 3 or 4 pin connector is routed to the left hand (clutch) side of the handlebar.

9. Remove the left hand switch housing as described in the Service Manual.

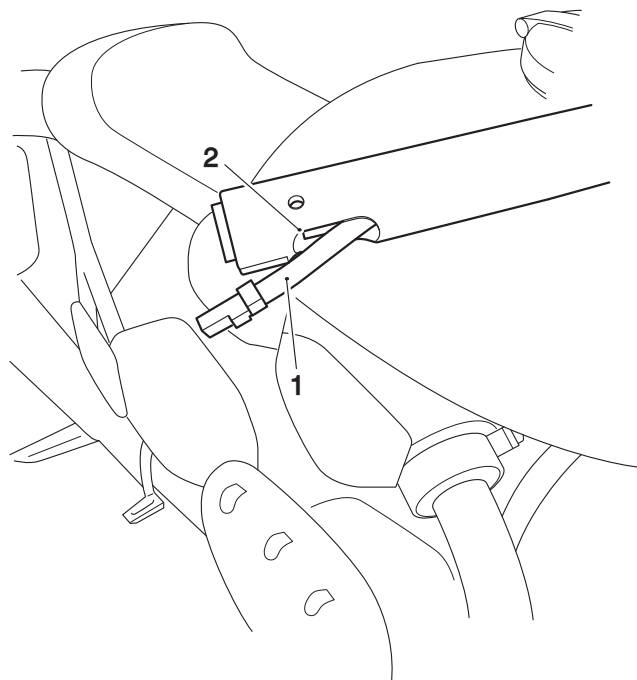
10. Thread the shorter heated grip subharness cable with the 3 pin connector into the large hole in the underside of the left hand side of the handlebar as shown.



1. Hole, handlebar

2. Subharness, shorter cable

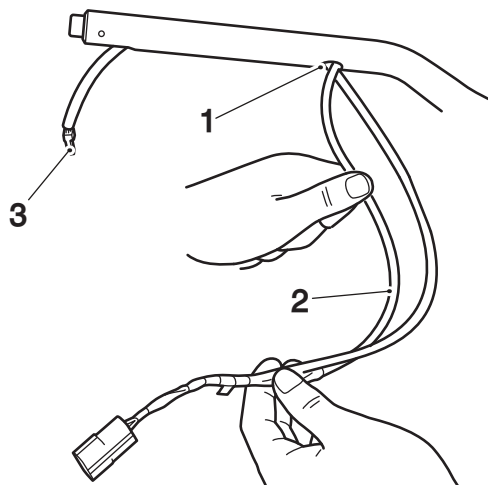
11. Feed the shorter subharness cable towards the left hand (clutch) side of the handlebar and out through the slot in the handlebar end weight mounting area of the handlebar as shown.



1. Subharness, shorter cable

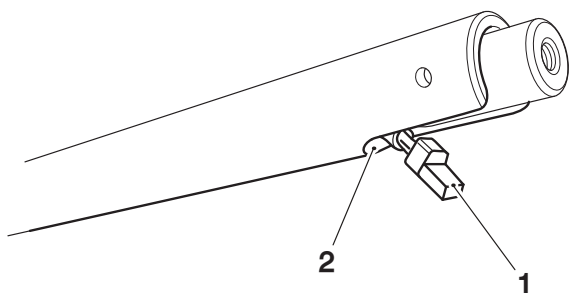
2. Slot, handlebar

12. Thread the longer heated grip subharness cable with the 2 pin connector into the large hole in the underside of the left hand side of the handlebar as shown.



1. Hole, handlebar
2. Subharness, longer cable
3. Subharness, shorter cable

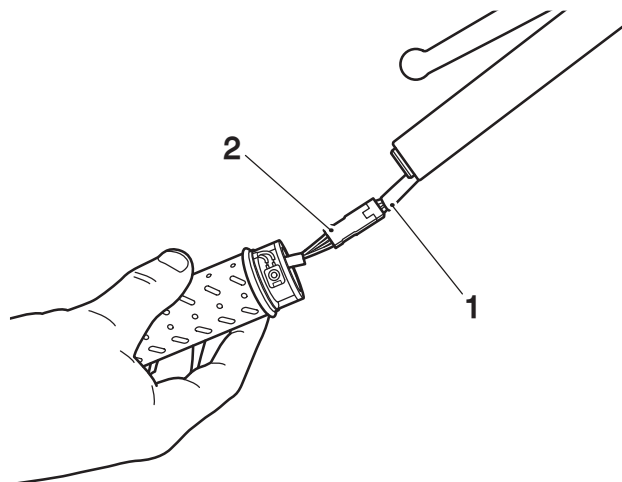
13. Feed the longer subharness cable towards the right hand (throttle) side of the handlebar and out through the slot in the handlebar end weight mounting area of the handlebar.



1. Subharness, longer cable
2. Slot, handlebar

Left Hand Grip

14. Connect the subharness connector to the left hand heated grip electrical connector.

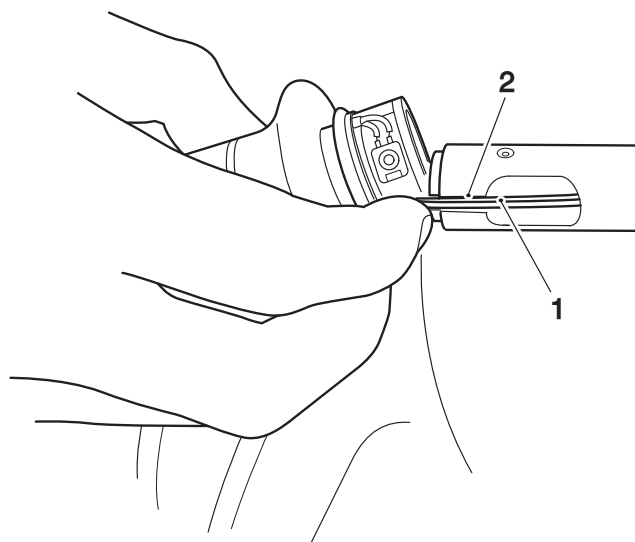


1. Subharness connector
2. Heated grip connector

⚠ CAUTION

A wiring harness which becomes trapped or kinked during installation, or motorcycle operation, may result in wiring harness damage and electrical malfunctions.

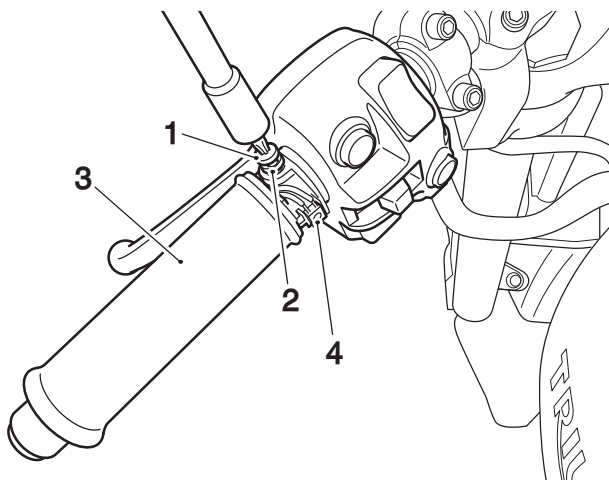
15. When fitting the grip onto the handlebar, carefully pull the lead back through the hole in the underside of the handlebar making sure the subharness/heated grip connection is positioned into the handlebar and the wires remain in the slot in the bar end.



1. Wires
2. Slot, handlebar

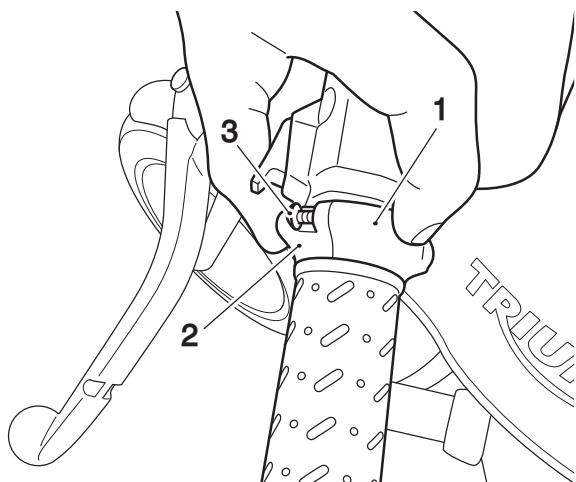
16. Refit the left hand switch housing as described in the Service Manual.

17. Make sure the grip is in the orientation shown below with the switch contacts facing the rider. Collect two washers and two M4 x 10 mm fixings and secure the new grip. Tighten to **3 Nm**.



- 1. Fixing, M4 x 10 mm (one of two shown)
- 2. Washer, M4
- 3. Heated grip
- 4. Switch contacts

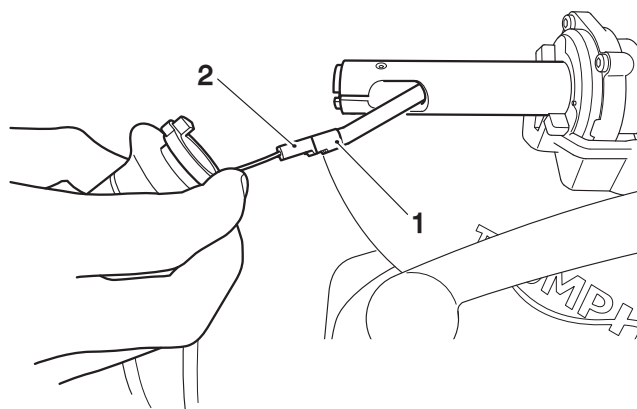
18. Fit the upper and lower switch housings on to the heated grip and retain with the Torx head self-tapping screws provided in the kit. Tighten the screws to **1 Nm**.



- 1. Upper switch housing
- 2. Lower switch housing
- 3. Self-tapping screw, Torx head (one of two shown)

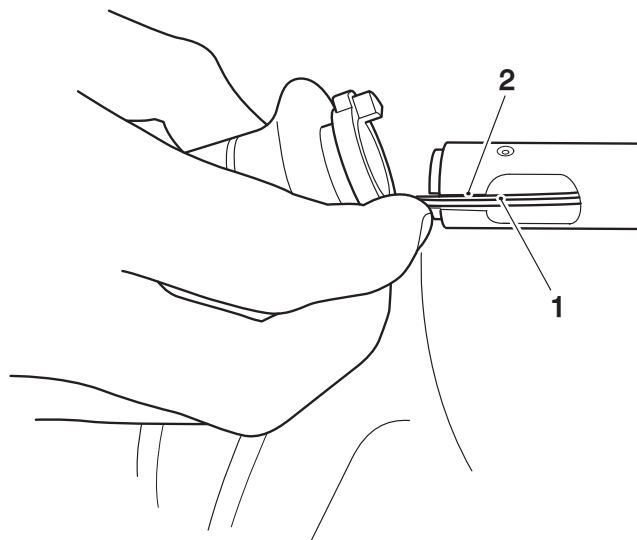
Right Hand Grip

19. Connect the 2 pin subharness connector to the right hand heated grip (twist grip) connector.



- 1. Subharness connector (2 pin)
- 2. Heated twist grip connector

20. When fitting the grip onto the handlebar, carefully pull the lead back through the hole in the underside of the handlebar making sure the subharness / heated grip connection is positioned into the handlebar and the wires remain in the slot in the bar end.



- 1. Wires
- 2. Slot, handlebar

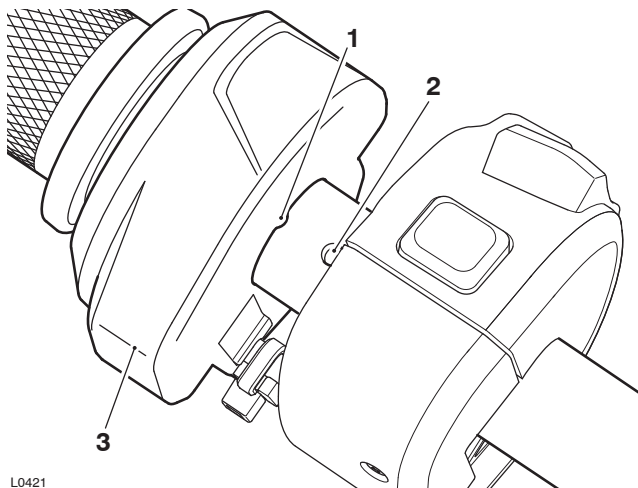
21. Make sure there is enough slack in the wires for the twist grip to rotate and the wires not to become trapped.

⚠ CAUTION

A wiring harness which becomes trapped or kinked during installation, or motorcycle operation, may result in wiring harness damage and electrical malfunctions.

22. Align the twist grip to the twist grip position sensor.

23. Fit the twist grip clamp. Make sure the locating lug fits into its hole on the handlebar.



L0421

1. Location lug
2. Hole
3. Twist grip clamp

24. Fit the fixings and tighten, upper one first, to **3 Nm**.

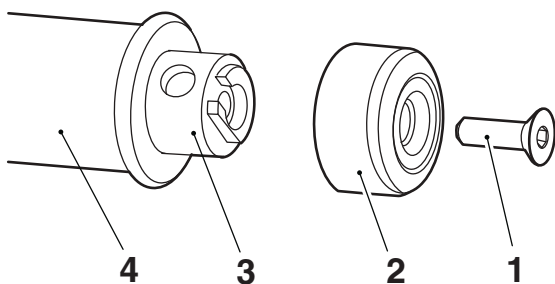
⚠ WARNING

Check the operation of the right hand heated grip (twist grip).

Make sure that the rearward and forward movement of the twist grip is smooth, without tightness, and will return to the throttle closed position when released.

A tight or stuck twist grip may lead to loss of motorcycle control which could result in serious injury or death.

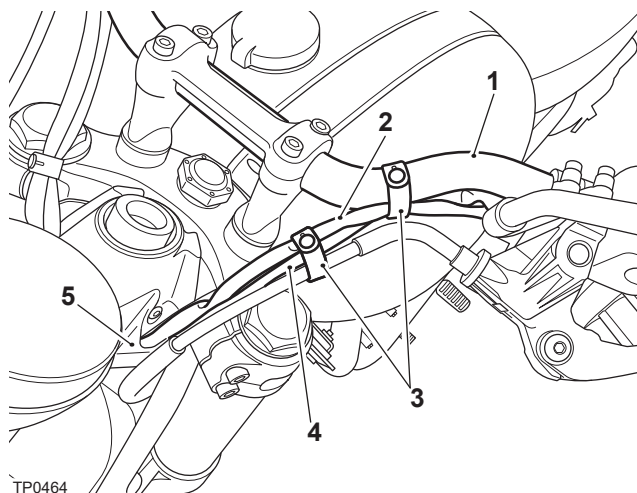
25. Refit the right hand handlebar end weight and spacer. Tighten the new fixing to **5 Nm**.



cccw_11

1. Fixing
2. Handlebar end weight
3. Handlebar
4. Twist grip

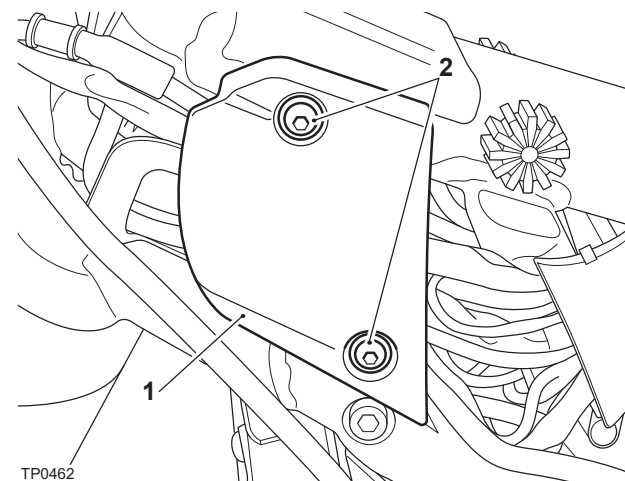
26. Carefully check that the twist grip rotates smoothly through its full range of movement, and it is not restricted in any way. If any tightness or resistance is felt, check and rectify the cause before riding the motorcycle.
27. Make sure the throttle is fully closed, and the electrical cable inside the twist grip has adequate slack to allow correct throttle operation.
28. Route the subharness along the handlebars and through the instrument bracket cable guide. Secure the heated grip harness and switch housing cable to the handlebars using the rubber strap.



TP0464

1. Handlebars
2. Heated grip harness
3. Rubber strap
4. Switch housing cable
5. Instrument bracket cable guide

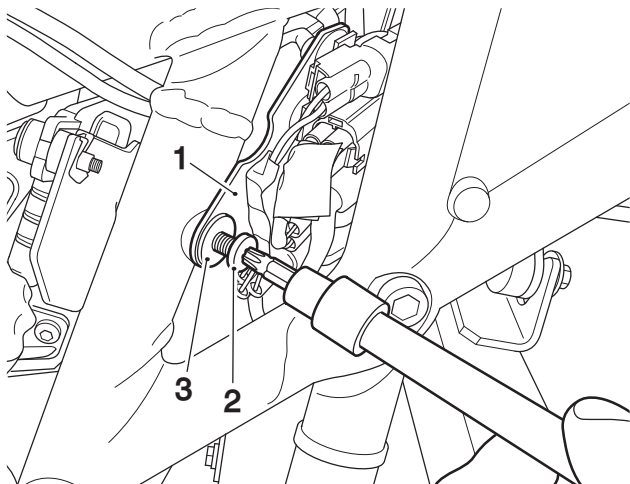
29. Remove the outer headstock covers from both sides of the motorcycle.



TP0462

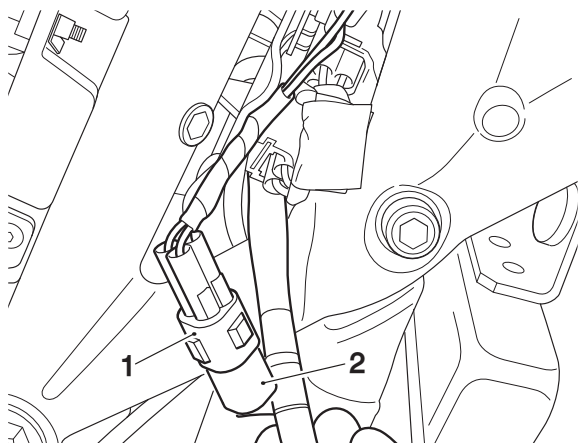
1. Headstock cover, outer
2. Fixings

30. Locate the connector bracket on the right hand side of the headstock. Remove the bracket fixing and washer.



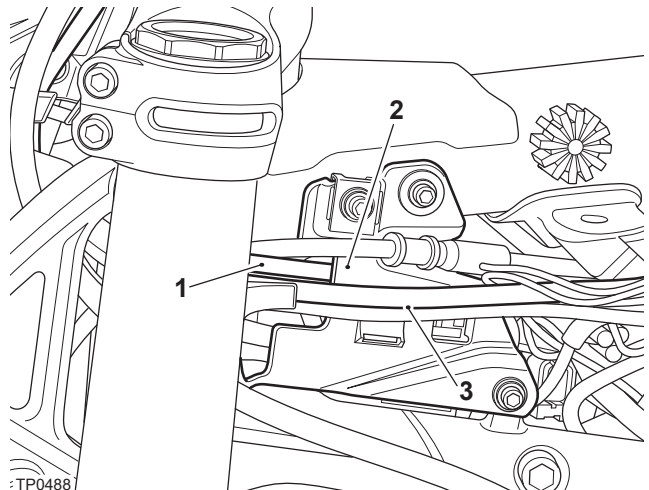
1. Bracket
2. Fixing
3. Washer

31. Disengage the heated grip harness connector from the mounting bracket and remove the blanking plug from the connector. Retain the blanking plug for reuse if the motorcycle is to be returned to its original condition.



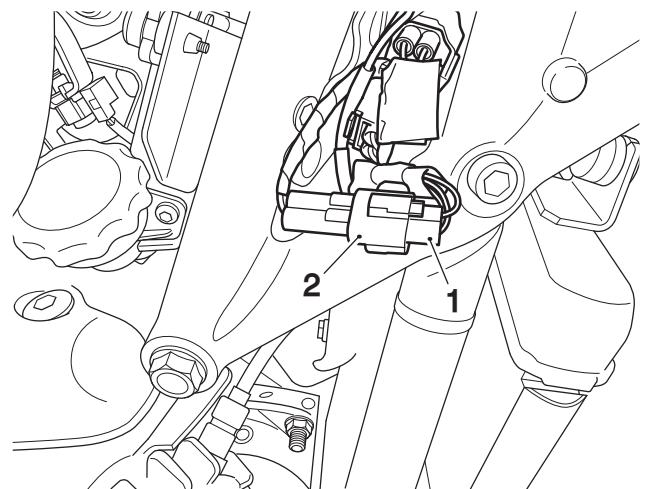
1. Heated grip connector, main harness
2. Blanking plug

32. Route the subharness underneath the upper yoke and behind the left hand headstock cover.



1. Subharness
2. Headstock cover, inner
3. Main wiring harness bundle

33. Connect the subharness to the heated grip harness connector on the right hand side of the motorcycle.



1. Heated grip harness connector
2. Main harness connector

34. Reattach the heated grip harness connector to the mounting bracket, and refit the bracket with the original fixing and washer. Tighten the fixing to **3 Nm**.

⚠ WARNING

Move the handlebars to the left and right full lock checking that the cables and harness do not bind.

A cable or harness that binds will restrict the steering and may lead to loss of motorcycle control which could result in serious injury or death.

35. Make sure there is sufficient slack in the subharness available to allow the handlebars to be turned from left to right full lock positions.

36. Refit the outer headstock covers on both sides of the motorcycle as described in the Service Manual.
37. Refit the fuel tank as described in the Service Manual.
38. Reconnect the battery, positive (red) lead first as described in the Service Manual.
39. Refit the seat, as described in the Service Manual.
40. Refit the left hand and right hand bar end finishers and handguards as described in the Service Manual.

Heated Grip System Testing

DANGER

Never start the engine or run the engine in a confined area.

Always operate the motorcycle in the open air or in an area with adequate ventilation.

Exhaust fumes are poisonous and will cause loss of consciousness and death within a short period of time.

NOTICE

During the initial engine start up phase the engine control module will run a self check of the heated grip.

1. Start the engine and allow to idle to avoid discharging the battery.
2. Check the temperature of the heated grip increases.
3. Fuse number 4 of the front fuse box protects the heated grip circuit. Refer to the label in the fuse box lid for fuse amperage.

Operation

The heated grips button is located on the left hand grip.

The heated grips work when the ignition is switched on. However, it is recommended that they are only used when the engine is running to avoid draining the battery.

There are two heat levels; low or high.

Press the heated grip button to show the current status of the heated grips in the display screen. This is shown for three seconds.

Press the heated grip button whilst the status is showing to select one of the three different statuses; OFF, Lo (low) or HI (high).

For maximum benefit from cold conditions, use the heated grips in the HI status initially and when the grips have warmed up, change the status to Lo.

To switch off the heated grips, press and release the button until OFF is shown in the display screen.

The heated grips are also switched off when the ignition is switched off.

Automatic Shutdown

If heated grips are fitted and are on with the engine not running, over a period of time, the battery voltage may drop below 11.8 Volts and 'LoBatt' is then shown in the display screen for three seconds.

If the heated grips are on and 'LoBatt' is shown, then the heated grips are automatically switched off to prevent further discharge of the battery. It is not possible to resume heated grip operation until the engine has been running and the battery voltage has increased above 11.8 Volts.

In the event of a short circuit issue, 'HgrOFF' is shown in the display screen and the heated grips are automatically switched off. The heated grips can be switched back on after 25 seconds

WARNING

After fitting the accessory kit the motorcycle will exhibit new handling characteristics.

Operate the motorcycle in a safe area free from traffic to gain familiarity with any new characteristics.

Operation of the motorcycle when not familiar with any new handling characteristics may lead to loss of motorcycle control which could result in serious injury or death.

WARNING

If, after fitting this accessory kit, you have any doubt about the performance of any aspect of the motorcycle, contact a competent person with the specialist knowledge and technical understanding of motorcycles, such as an authorised Triumph dealer.

Riding a motorcycle when there is any doubt as to any aspect of the performance of the motorcycle may lead to loss of motorcycle control which could result in serious injury or death.

⚠ WARNING

Never ride an accessory-equipped motorcycle at speeds above 80 mph (130 km/h).

Remember that the 80 mph (130 km/h) limit will be reduced by the fitting of non-approved accessories, incorrect loading, worn tyres, overall motorcycle condition and poor road or weather conditions.

The presence of accessories will cause changes in the stability and handling of the motorcycle. Failure to allow for changes in motorcycle stability may lead to loss of motorcycle control which could result in serious injury or death.

⚠ WARNING

High-speed operation should only be attempted by riders who have been instructed in the techniques necessary for high-speed riding and are familiar with the motorcycle's characteristics in all conditions.

Only operate this Triumph motorcycle at high speed in closed-course, on-road competition or on closed-course racetracks.

High-speed operation in any other circumstances is dangerous and may lead to loss of motorcycle control which could result in serious injury or death.

NOTICE

The motorcycle must not be operated above the legal road speed limit except in closed-course conditions.