



Accessory Fitting Instructions

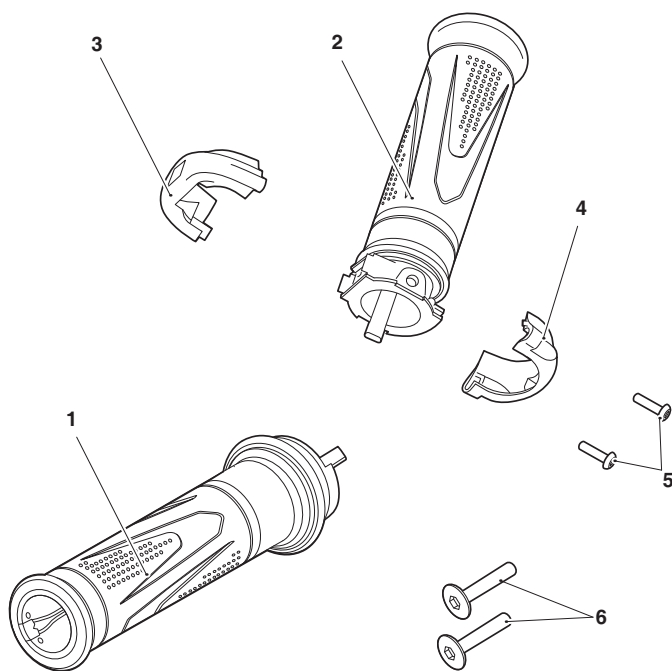
Heated Grip Kit	
Kit Number	Models Affected
A9638329 A9638350	Tiger 1200 GT

Thank you for choosing this Triumph genuine accessory kit. This accessory kit is the product of Triumph's use of proven engineering, exhaustive testing, and continuous striving for superior reliability, safety and performance.

Completely read all of these instructions before commencing the installation of the accessory kit in order to become thoroughly familiar with the kit's features and the installation process.

These instructions should be considered a permanent part of your accessory kit, and should remain with it even if your accessory equipped motorcycle is subsequently sold.

Parts Supplied



1. Heated grip, right hand	1 off	4. Rear switch housing	1 off
2. Heated grip, left hand	1 off	5. Fixing, M3 x 12 mm	2 off
3. Front switch housing	1 off	6. Fixing, M6 x 50 mm (encapsulated)	2 off



Warning

Fit only genuine Triumph accessories to those models approved by Triumph as listed in the associated Triumph fitting instructions. The accessory kits covered in this instruction are designed for use on specific models of Triumph motorcycle. The accessory kits and the models applicable are listed at the start of the instruction. They should never be fitted to any other Triumph model or to any other manufacturer's motorcycle. Fitting an accessory kit to a Triumph model not listed, or to any other manufacturer's motorcycle will affect the performance, stability and handling of the motorcycle. This may affect the rider's ability to control the motorcycle and could result in an accident causing severe injuries or death.



Warning

Always have Triumph approved parts, accessories and conversions fitted by a trained technician of an authorised Triumph dealer. The fitment of parts, accessories and conversions by a technician who is not of an authorised Triumph dealer may affect the handling, stability or other aspects of the motorcycle's operation which will result in loss of motorcycle control and an accident.



Warning

Always make sure that the newly installed wiring does not chafe against other parts of the motorcycle such that it may be rubbed through and cause an electrical problem. In addition, always make sure that the newly installed wiring will not restrict steering movement. Both conditions are hazardous and could give rise to a dangerous riding condition resulting in a fire, loss of motorcycle control and an accident.



Warning

Throughout this operation, make sure that the motorcycle is stabilised and adequately supported to prevent risk of injury from the motorcycle falling.



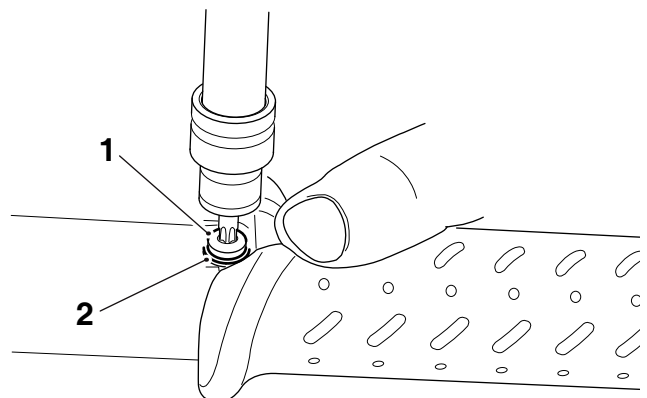
Warning

A torque wrench of known accurate calibration must be used when fitting this accessory kit. Failure to tighten any of the fasteners to the correct torque specification may affect motorcycle performance, handling and stability. This will result in loss of motorcycle control and an accident.

Note:

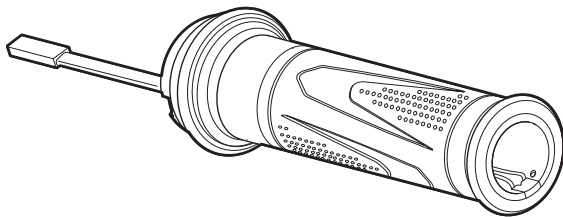
- Triumph offers a broad range of approved genuine accessories for your motorcycle. We cannot therefore cover all possible equipment variations in these instructions. For removal and installation of Triumph Genuine Accessories always refer to the instructions supplied with the respective accessory kit. To obtain additional copies of any Triumph accessory instructions, visit www.triumphinstructions.com or contact your authorised Triumph dealer.

1. Remove the rider and passenger seats, as described in the Service Manual.
2. Disconnect the battery, as described in the Service Manual.
3. Remove both hand guards, as described in the Service Manual.
4. Remove the left hand handlebar grip by removing the fixings as shown. Retain the fixings and washers for reuse. Retain the grip for reuse if the motorcycle is to be returned to its original condition.



1. Fixing (one of two shown)
2. Washer (one of two shown)

5. Route the electrical connector of the heated grip through both heated grip as shown.



Left Hand Side



Caution

A wiring harness which becomes trapped or kinked during installation, or general motorcycle operation, may result in wiring harness damage and electrical malfunctions.

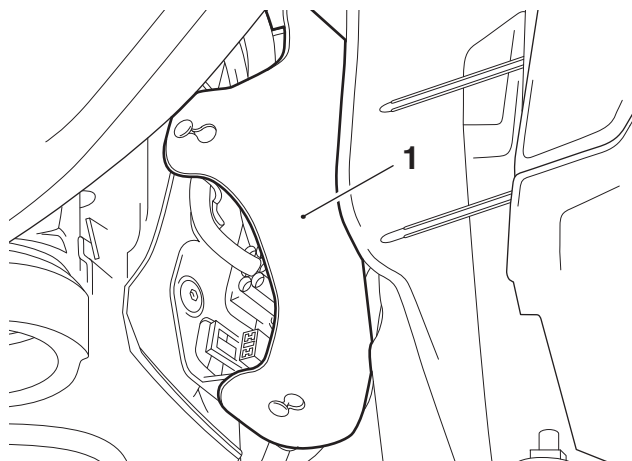
Note:

- The heated grip sub harness is a branch of the switch housing harness. The heated grip connector sits in a hole in the handlebars beneath the switch housing. To fit the heated grips the connector needs to be temporarily repositioned out the end of the handlebar, requiring slack in the switch housing harness.

Note:

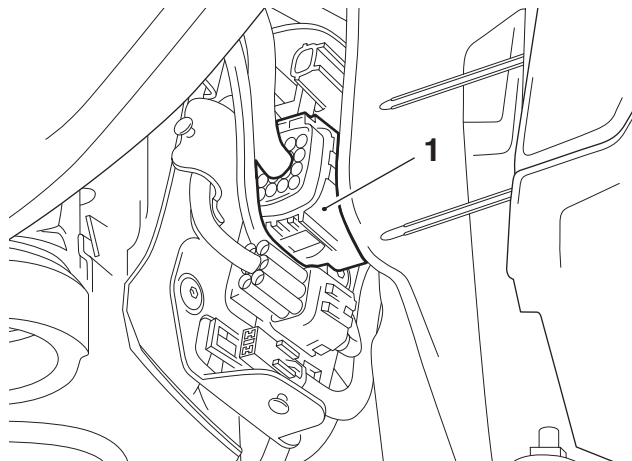
- The illustrations for steps 6 and 7 show the front suspension removed for clarity.

6. Locate the left hand switch housing harness 16 pin connector, behind a rubber cover to the left of the headstock.



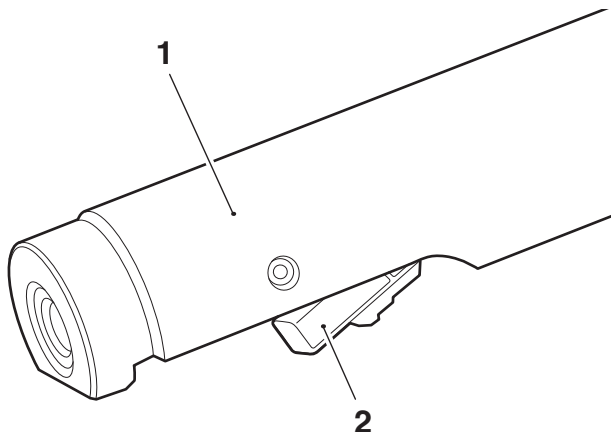
1. Rubber cover

7. Disconnect the switch housing harness connector.



1. Switch housing harness connector

8. Remove the two rubber retaining bands from the switch housing harness making note of their positions. Retain the bands for reuse.
9. Slide the switch housing harness through the retaining features, use this slack to push the main harness heated grip connector to the end of the handlebar.



1. Handlebar
2. Main harness heated grip connector



Caution

Blanking plugs are fitted to the harness electrical connectors to prevent water ingress. If the blanking plugs are removed for any reason, they should always be refitted. The harness electrical connectors should never be left exposed without blanking plugs fitted as this may lead to a malfunction, or premature failure of components.

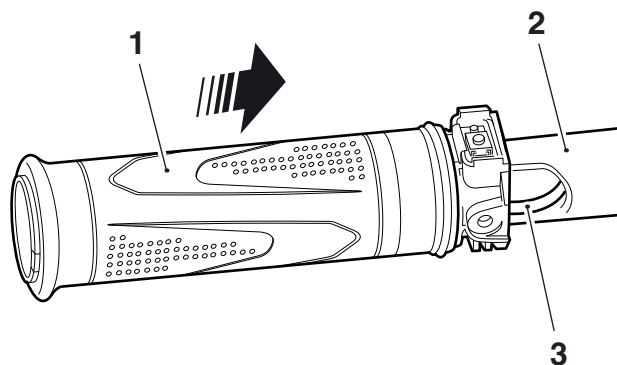
10. Remove the blanking plug from the switch housing harness heated grip connector.
11. Connect the switch housing harness heated grip connector to the left hand heated grip harness.



Caution

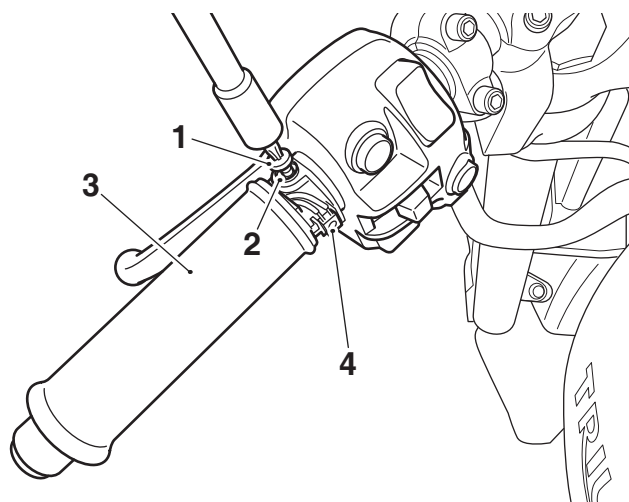
A wiring harness which becomes trapped or kinked during installation, or general motorcycle operation, may result in wiring harness damage and electrical malfunctions.

12. Position the left hand heated grip so the harness is aligned with the hole in the handlebar. Carefully slide the heated grip over the handlebar while pulling the harness back through the handlebar to its original position. Make sure the heated grip harness remains aligned with the gap in the handlebars throughout the process.



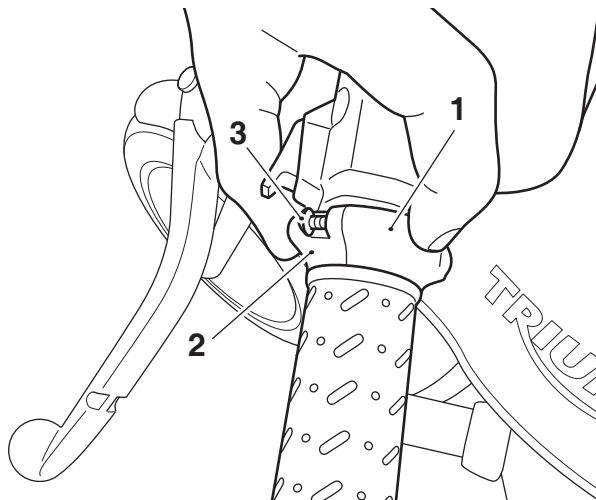
1. Heated grip
2. Handlebar
3. Heated grip harness

13. Make sure the grip is in the orientation shown below with the switch contacts facing the rider. Secure the new grip with the original pan head self-tapping screws and washers. Tighten the fixings to **3 Nm**.



1. Screw, pan head self-tapping (one of two shown)
2. Washer (one of two shown)
3. Heated grip
4. Switch contacts

14. Fit the front and rear switch housings on to the heated grip using the M3 screws provided in the kit. Tighten the screws to **0.5 Nm**.



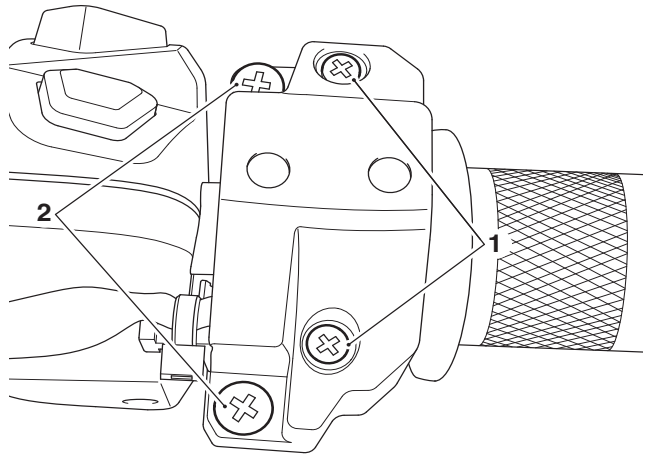
1. Front switch housing
2. Rear switch housing
3. Screw, Torx head self-tapping (one of two shown)

15. Reposition the switch housing harness to its original condition and reconnect the left hand 16 pin switch housing connector. Refit the rubber cover.
16. Refit the two harness retaining rubber bands to the switch housing harness.

Right Hand Side

Note:

- The anti-tamper fixings on the twist grip housing must not be loosened or removed.
 - If the anti-tamper screws have been loosened or removed any warranty claims for the twist grip housing will not be honoured.
17. Remove the twist grip from the right hand side of the handlebars, as described in the Service Manual. Retain the twist grip for reuse if the motorcycle is to be returned to its original condition.



1. Anti-tamper fixings
2. Fixings

18. Repeat steps 6 - 12 for the right hand heated grip.



Caution

A wiring harness which becomes trapped or kinked during installation, or general motorcycle operation, may result in wiring harness damage and electrical malfunctions.

19. Refit the twist grip as described in the service manual, making sure the locating plug correctly positions into the hole in the handlebar.
20. Reposition the switch housing harness to its original condition and reconnect the right hand 16 pin switch housing connector. Refit the rubber cover.



Warning

Check the operation of the right hand heated grip (twist grip). Make sure that the rearward and forward movement of the grip is smooth, without tightness and will return to the throttle closed position when released.

A tight or stuck twist grip may lead to loss of motorcycle control and an accident.

21. Carefully check that the twist grip rotates smoothly through its full range of movement, and is not restricted in any way. If any tightness or resistance is felt, check and rectify the cause before riding the motorcycle.
22. Make sure the throttle is fully closed, and the electrical cable inside the twist grip has adequate slack to allow correct throttle operation.
23. Refit the two harness retaining rubber bands to the switch housing harness.
24. Refit the left and right hand guards, as described in the service manual.
25. Reconnect the battery as described in the service manual.
26. Refit the rider and passenger seats as described in the service manual.

Heated Grip System Testing



Warning

Never start the engine or let it run for any length of time in a closed area. The exhaust fumes are poisonous and may cause loss of consciousness and death within a short time. Always operate the motorcycle in the open-air or in an area with adequate ventilation.

1. Start the engine and allow to idle to avoid discharging the battery.
2. Switch on the heated grips and check that the temperature of the heated grips increases.
3. Fuse number 2 within fuse box 1 protects the heated grip circuit. Refer to the label in the fuse box lid for fuse amperage.

Operation

The heated grips work when the ignition is switched on. However, it is recommended that they are only used when the engine is running to avoid draining the battery.

The heated grips have three operating modes, HIGH, MEDIUM and LOW. Press the heated grip button and the status will be shown on the display screen as a heated grip symbol in different colours, as described below:

- Press once - HIGH:
RED symbol with 3 dots.
- Press Twice - MEDIUM:
ORANGE symbol with 2 dots.
- Press Three times - LOW:
YELLOW symbol with 1 dot.

To switch OFF the heated grips, press and release the button until a GREY heated grip symbol is shown in the display screen. After three seconds, the heated grips symbol will disappear from the display screen. The heated grips are also switched off when the ignition is switched off.

For maximum benefit from cold conditions, use the heated grips in the HIGH status initially and when the grips have warmed up, change the status to LOW.

Automatic Shutdown

If the heated grips are on and 'LoBatt' is shown, then the heated grips are automatically switched off to prevent further discharge of the battery. It is not possible to resume heated grip operation until the engine has been running and the battery voltage has increased above 11.8 Volts.

In the event of a short circuit issue, the heated grips are automatically switched off. This will be indicated on the display screen. The heated grips can be switched back on after 25 seconds.



Warning

If, after fitment of this accessory kit, you have any doubt about the performance of any aspect of the motorcycle, contact an authorised Triumph dealer and do not ride the motorcycle until the authorised dealer has declared it fit for use. Riding a motorcycle when there is any doubt as to any aspect of the performance of the motorcycle may result in loss of motorcycle control and an accident.



Warning

Never ride an accessory equipped motorcycle at speeds above 80 mph (130 km/h).

The presence of accessories will cause changes in the stability and handling of the motorcycle. Failure to allow for changes in motorcycle stability may lead to loss of motorcycle control and an accident.

Remember that the 80 mph (130 km/h) limit will be reduced by the fitting of non-approved accessories, incorrect loading, worn tyres, overall motorcycle condition and poor road or weather conditions.



Warning

The motorcycle must not be operated above the legal road speed limit except in closed-course conditions.



Warning

Only operate this Triumph motorcycle at high speed in closed-course, on-road competition or on closed-course racetracks. High-speed operation should only be attempted by riders who have been instructed in the techniques necessary for high speed riding and are familiar with the motorcycle's characteristics in all conditions.

High-speed operation in any other circumstances is dangerous and may lead to loss of motorcycle control and an accident.