



Accessory Fitting Instructions

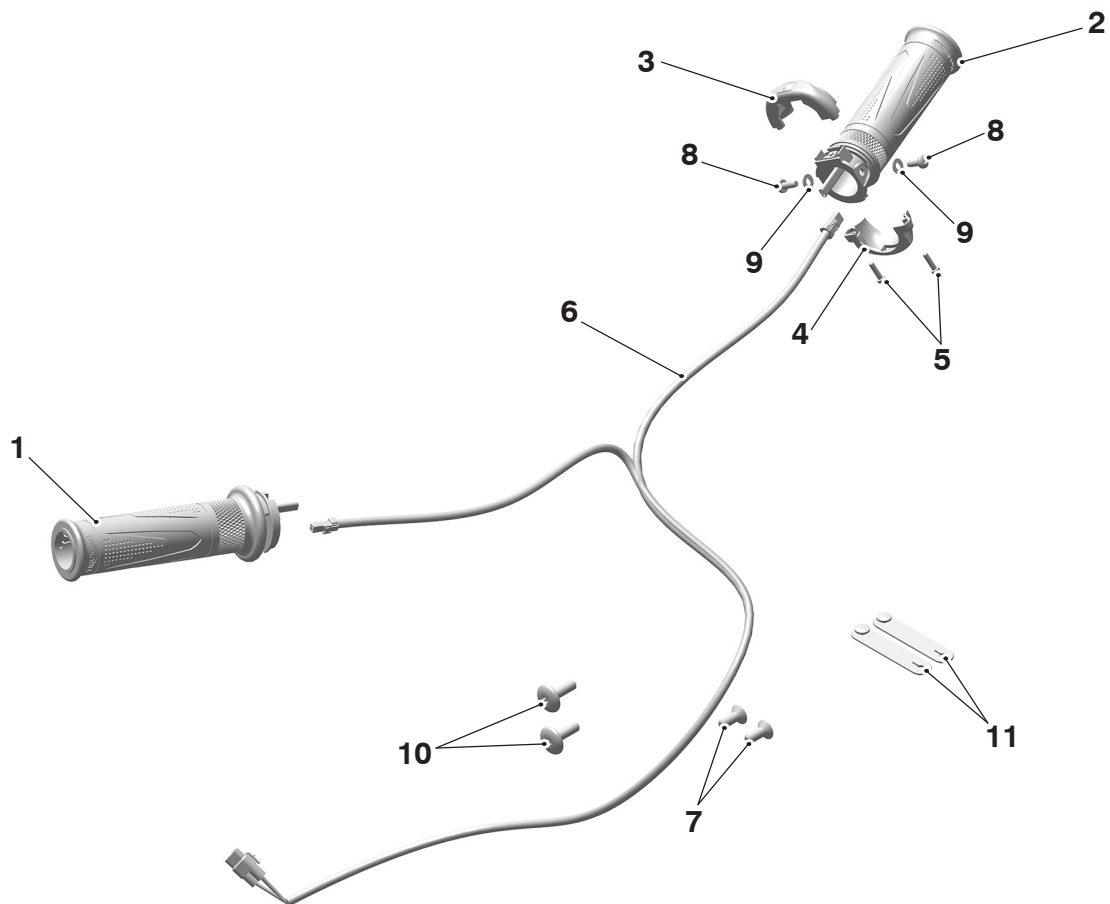
Thank you for choosing this Triumph genuine accessory kit. This accessory kit is the product of Triumph's use of proven engineering, exhaustive testing, and continuous striving for superior reliability, safety and performance.

Completely read all of these instructions before commencing the installation of the accessory kit in order to become thoroughly familiar with the kit's features and the installation process.

These instructions should be considered a permanent part of your accessory kit, and should remain with it even if your accessory equipped motorcycle is subsequently sold.

Heated Grip Kit	
Kit Number	Models
A9638304	Speed Triple S from VIN 867685, Speed Triple RS, Rocket 3 R, Rocket 3 TFC, Rocket 3 R Black, Rocket 3 R Storm

Parts supplied



1. Heated grip, right hand	1 off	7. Fixing, M6 x 16 mm	2 off
2. Heated grip, left hand	1 off	8. Screw, pan head self-tapping	2 off
3. Upper switch housing	1 off	9. Washer	2 off
4. Lower switch housing	1 off	10. Fixing, M4 x 20 mm	2 off
5. Screw, Torx head self-tapping	2 off	11. Rubber strap	2 off
6. Subharness	1 off		

⚠ WARNING

Fit only genuine Triumph accessories to those models approved by Triumph as listed in the associated Triumph fitting instructions.

The accessory kits covered in this instruction are designed for use on specific models of Triumph motorcycle. The accessory kits and the models applicable are listed at the start of the instruction. They should never be fitted to any other Triumph model or to any other manufacturer's motorcycle.

Fitting an accessory kit to a Triumph model not listed, or to any other manufacturer's motorcycle, will affect the performance, stability and handling of the motorcycle.

Failure to follow the advice above may lead to loss of motorcycle control which could result in serious injury or death.

⚠ WARNING

Always have Triumph approved parts, accessories and conversions fitted by a competent person with the specialist knowledge and technical understanding of motorcycles, such as an authorised Triumph dealer.

The fitment of parts, accessories and conversions by a person without the specialist knowledge and technical understanding of motorcycles may affect the handling, stability or other aspects of the motorcycle's operation.

Failure to follow the advice above may lead to loss of motorcycle control which could result in serious injury or death.

⚠ WARNING

A torque wrench of known accurate calibration must be used when fitting this accessory kit.

Failure to tighten any of the fasteners to the correct torque specification may affect motorcycle performance, handling and stability.

Failure to follow the advice above may lead to loss of motorcycle control which could result in serious injury or death.

⚠ WARNING

Make sure the motorcycle is stabilised and adequately supported.

Do not support the motorcycle on any ancillary component, the exhaust system or any other non structural parts of the motorcycle frame.

A correctly supported motorcycle will help prevent it from falling.

An unstable motorcycle may fall resulting in motorcycle damage, serious injury or death.

NOTICE

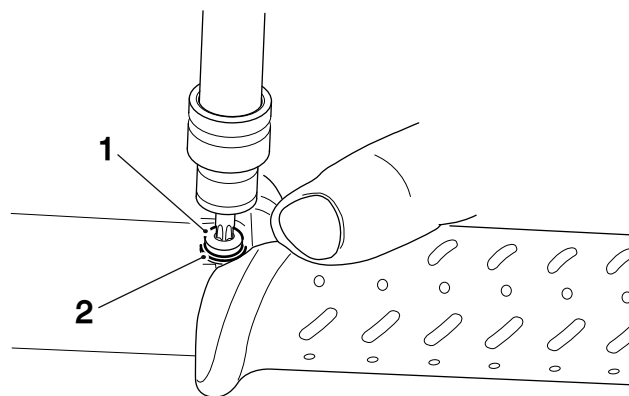
Triumph offers a broad range of approved genuine accessories for your motorcycle.

We cannot therefore cover all possible equipment variations in these instructions. For removal and installation of Triumph Genuine Accessories, always refer to the instructions supplied with the respective accessory kit.

To obtain additional copies of any Triumph accessory instructions, visit www.triumphinstructions.com or contact your authorised Triumph dealer.

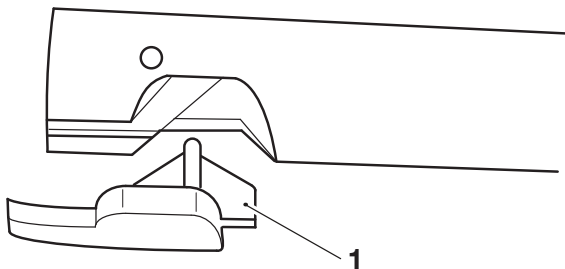
Speed Triple Fitting Instructions

1. Remove the rider and passenger seat, as described in the Service Manual.
2. Disconnect the battery as described in the Service Manual.
3. Remove the bar end finishers from the left and right hand handlebars as described in the Service Manual, and retain for reuse if the motorcycle is to be returned to its original condition. Discard the fixings.
4. Release the two fixings securing the left hand handlebar grip to the handlebar and slide the handlebar grip off the handlebar. Discard the fixings and washers. Retain the grip for reuse if the motorcycle is to be returned to its original condition.



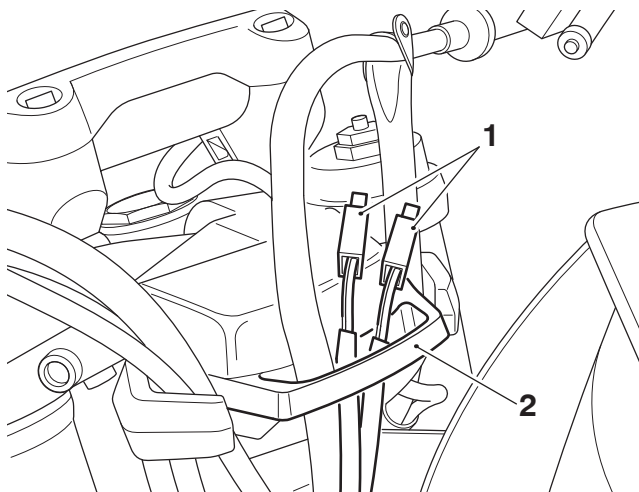
1. Fixing (one of two shown)
2. Washer (one of two shown)

5. If fitted, remove the plastic insert from the end of the left hand side of the handlebars, as shown. Retain the plastic insert for reuse if the motorcycle is to be returned to its original condition.



1. Plastic insert

6. Remove the twist grip from the right hand side of the handlebars, as described in the Service Manual. Retain the twist grip for reuse if the motorcycle is to be returned to its original condition.
7. Thread the heated grip subharness leads through the clutch cable guide from the underside, as shown, before threading the leads into the handlebars. Do not connect the subharness to the main harness at this stage.



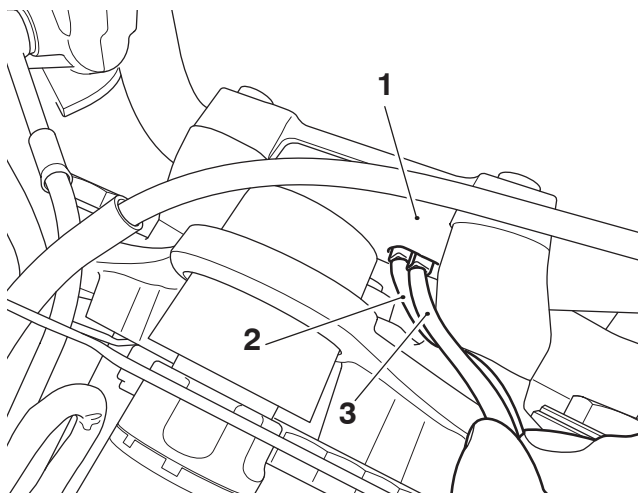
1. Heated grip subharness leads
2. Clutch cable guide

NOTICE

The subharness lead with the 2 pin connector is routed to the right hand (throttle) side of the handlebar.

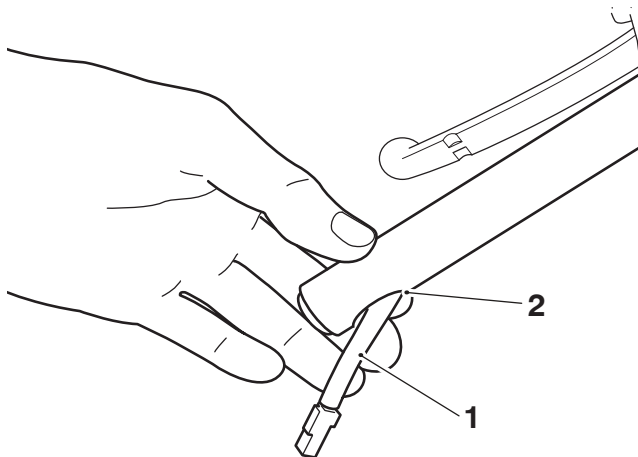
The subharness lead with the 3 pin connector is routed to the left hand (clutch) side of the handlebar.

8. Thread the heated grip switch cables into the large hole at the centre of the handlebar, on the underside as shown below.



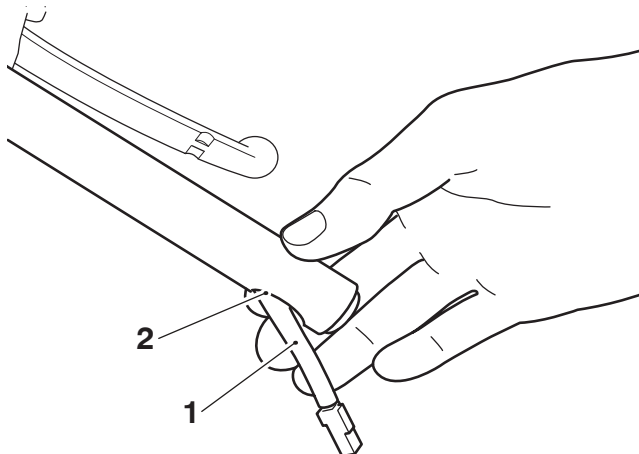
1. Handlebar
2. Heated grip switch cable - 2 pin connector
3. Heated grip switch cable - 3 pin connector

9. Feed the subharness lead with the 3 pin connector towards the left hand side of the handlebar and out through the slot in the handlebar end weight mounting.



1. Subharness
2. Slot, handlebar

10. Feed the subharness lead with the 2 pin connector towards the right hand side of the handlebar and out through the slot in the handlebar end weight mounting.



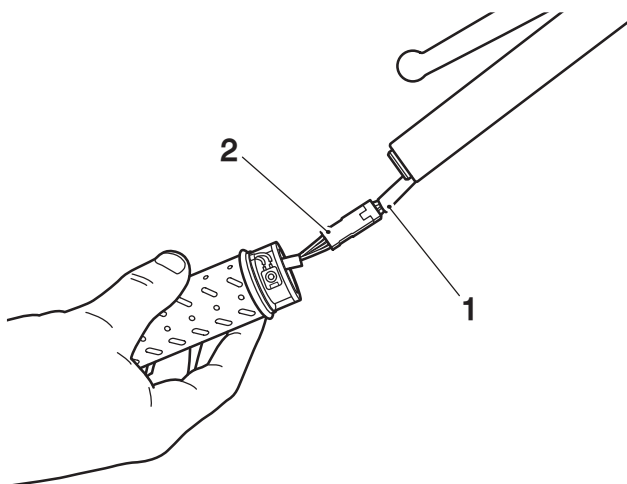
1. Subharness
2. Slot, handlebar

NOTICE

A wiring harness which becomes trapped or kinked during installation, or motorcycle operation, may result in wiring harness damage and electrical malfunctions.

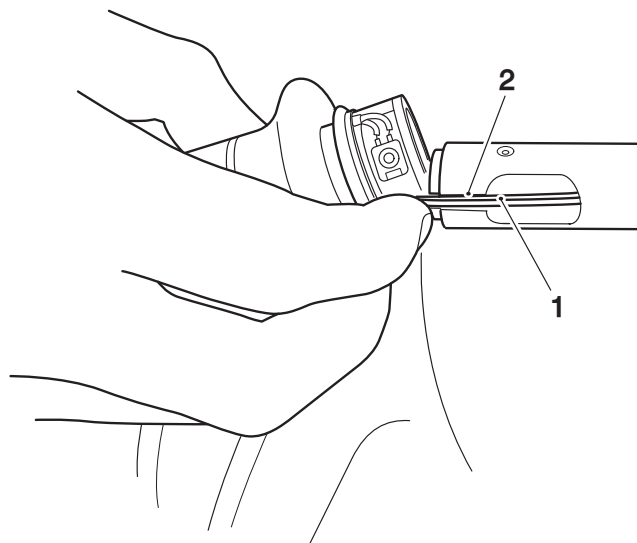
Left Hand Side

11. Connect the heated grip harness connector to the left hand heated grip electrical connector.



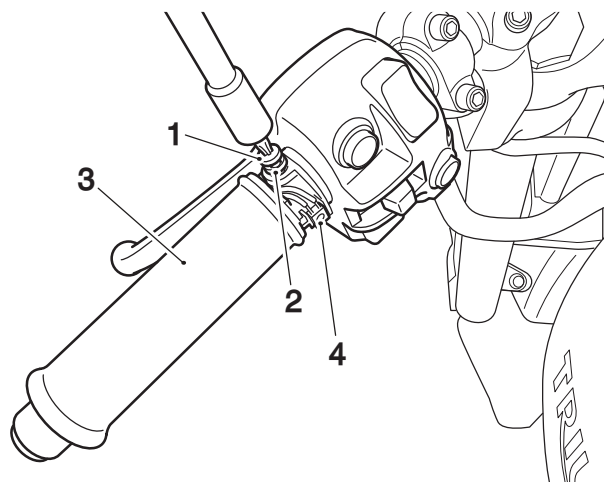
1. Heated grip harness connector)
2. Heated grip connector

12. When fitting the grip onto the handlebar, carefully pull the harness back through the handlebar ensuring the harness/heated grip connection is positioned into the handlebar and the wires remain in the slot in the bar end.



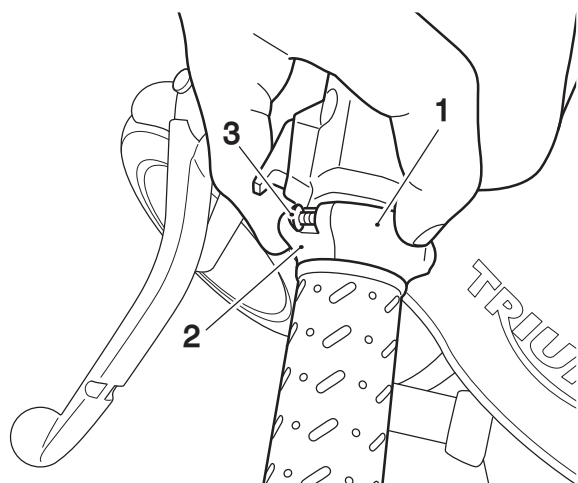
1. Wires
2. Slot, handlebar

13. Make sure the grip is in the orientation shown below with the switch contacts facing the rider. Secure the new grip with the pan head selftapping screws and washers provided in the kit. Tighten the fixings to **2.5 Nm**.



1. Screw, pan head self-tapping (one of two shown)
2. Washer (one of two shown)
3. Heated grip
4. Switch contacts

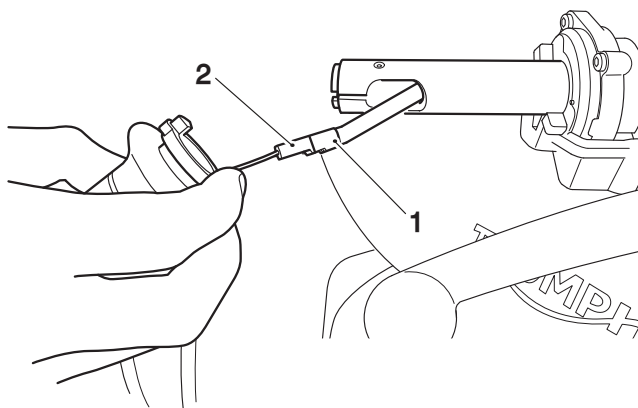
14. Fit the upper and lower switch housings on to the heated grip and retain with the Torx head self-tapping screws provided in the kit. Tighten the screws to **1 Nm**.



1. Upper switch housing
2. Lower switch housing
3. Screw, Torx head self-tapping (one of two shown)

Right Hand Side

15. Connect the heated grip harness connector to the right hand heated grip (twist grip) connector.



1. Heated grip harness connector
2. Heated twist grip connector

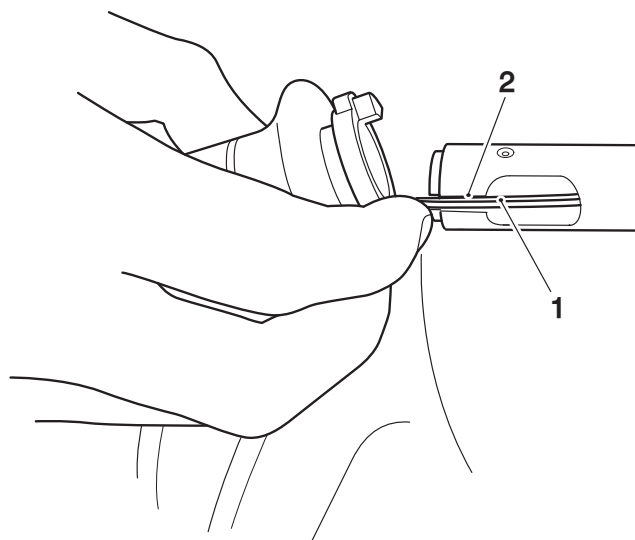
NOTICE

A wiring harness which becomes trapped or kinked during installation, or motorcycle operation, may result in wiring harness damage and electrical malfunctions.

NOTICE

The method of fitting the right hand heated grip (twist grip) to the twist grip position sensor and handlebars is the same as that for the original twist grip, as described in the Service Manual.

16. When fitting the grip onto the handlebar, carefully pull the harness back through the handlebar ensuring the harness/heated grip connection is positioned into the handlebar.



1. Wires
2. Slot, handlebar

17. Make sure there is enough slack in the wires for the twist grip to rotate and the wires not to become trapped.

⚠ WARNING

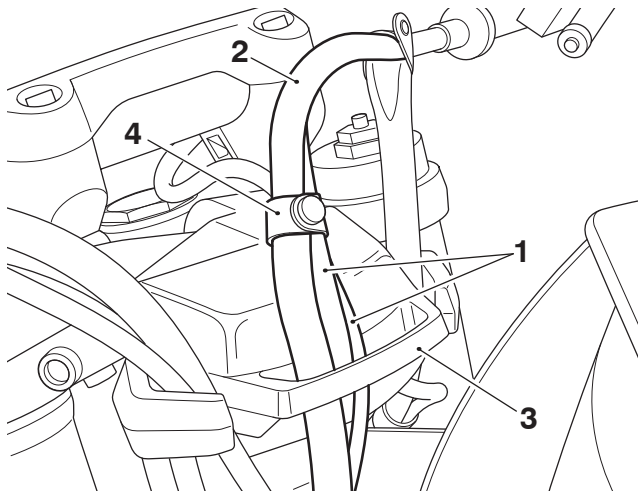
Check the operation of the right hand heated grip (twist grip).

Make sure that the rearward and forward movement of the twist grip is smooth, without tightness, and will return to the throttle closed position when released.

A tight or stuck twist grip may lead to loss of motorcycle control which could result in serious injury or death.

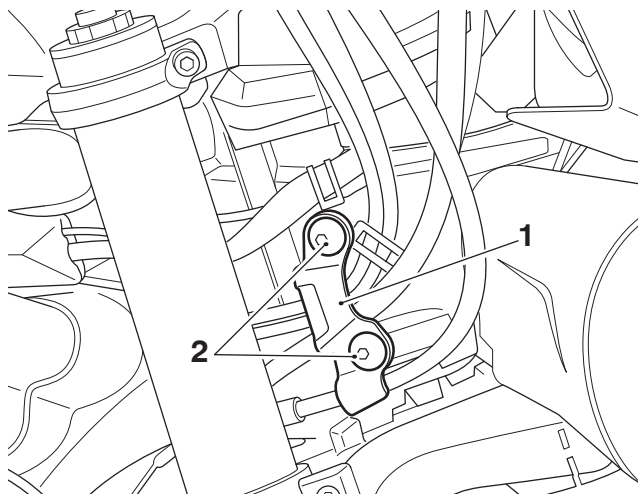
18. Refit the twist grip position sensor and tighten the fixings to **2.5 Nm**.
19. Carefully check that the twist grip rotates smoothly through its full range of movement, and is not restricted in any way. If any tightness or resistance is felt, check and rectify the cause before riding the motorcycle.
20. Make sure the throttle is fully closed, and the electrical cable inside the twist grip has adequate slack to allow correct throttle operation.

21. Using one of the rubber straps from the kit secure the heated grip switch harness to the clutch cable above the clutch cable guide, as shown.



- 1. Heated grip switch harness
- 2. Clutch cable
- 3. Clutch cable guide
- 4. Rubber strap

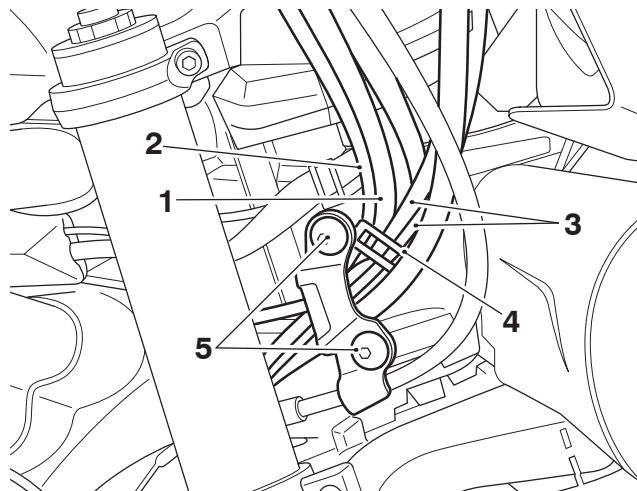
22. Place the motorcycle in the full right lock position.
23. Remove the fixings securing the cable guide on the right hand side of the motorcycle. Retain the cable guide for reuse, discard the fixings.



- 1. Cable guide
- 2. Fixings

Speed Triple Models up to VIN 968464

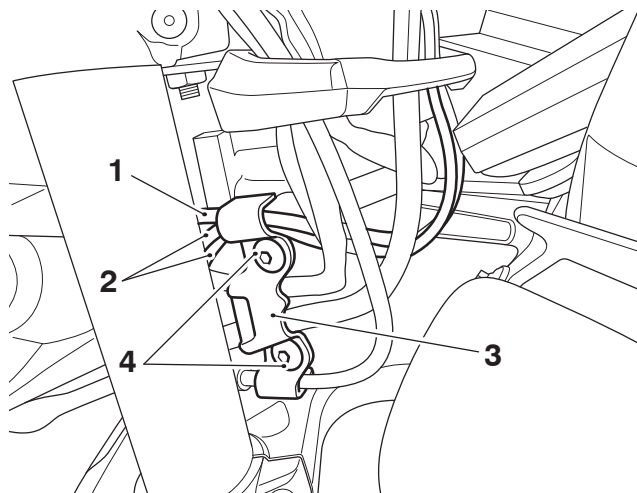
24. Adjust the cable clip to retain the heated grip switch harness with the APS and brake light switch harnesses. Refit the cable guide and fit the M6 x 20 mm pan head encapsulated fixings from the kit. Tighten the fixings to **13 Nm**.



- 1. APS harness
- 2. Brake light switch harness
- 3. Heated grip switch harness
- 4. Cable clip
- 5. Fixings, M6 x 20 mm pan head encapsulated

Speed Triple Models from VIN 968465

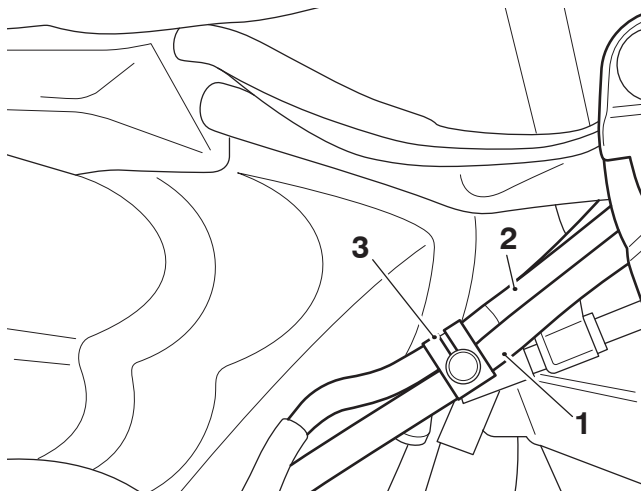
25. Route the heated grip harness, with the APS harness, through the top section of the cable guide, as shown. Refit the cable guide and fit the M6 x 20 mm pan head encapsulated fixings from the kit. Tighten the fixings to **13 Nm**.



- 1. APS harness
- 2. Heated grip switch harness
- 3. Cable clip
- 4. Fixings, M6 x 20 mm pan head encapsulated

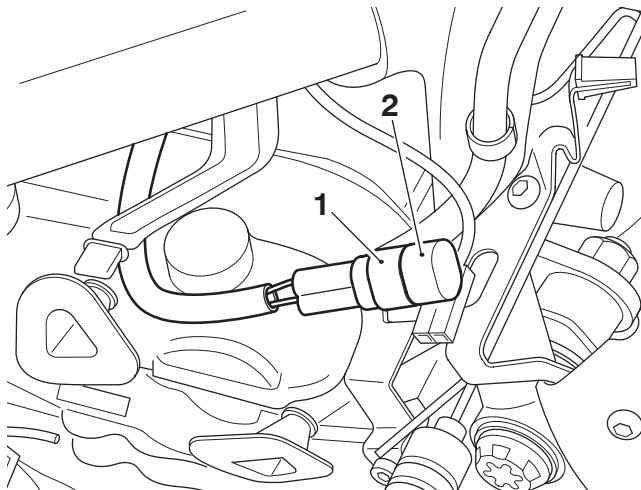
All Speed Triple Models

26. Using a rubber strap from the kit secure the heated grip switch harness to the clutch cable on the right hand side of the motorcycle, as shown.



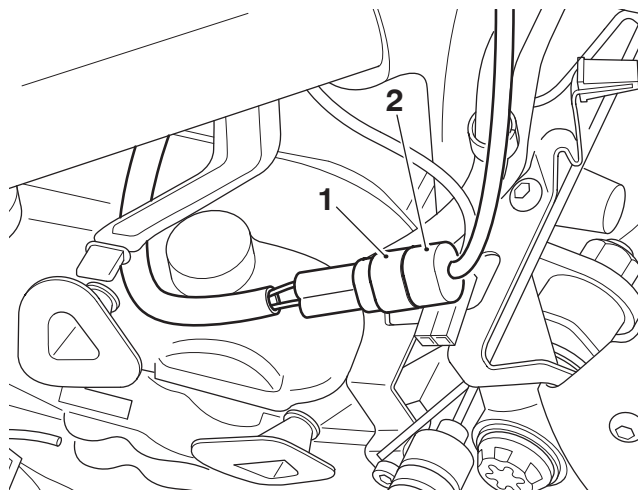
1. Clutch cable
2. Heated grip switch harness
3. Rubber strap

27. Remove the radiator cowl, as described in the Service Manual.
28. Identify the main wiring harness connector on the main wiring harness (located attached to the radiator support) and remove the blanking plug. Retain the blanking plug if the motorcycle is to be returned to its original condition.



1. Main wiring harness connector
2. Blanking plug

29. Connect the heated grip harness connector to the main harness connector.

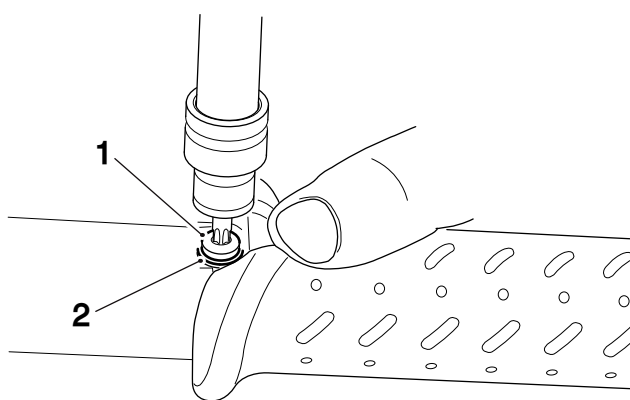


1. Main wiring harness connector
2. Heated grip harness connector

30. Refit the radiator cowl as described in the Service Manual.
31. Reconnect the battery, as described in the Service Manual.
32. Refit the front panel to the fuel tank as described in the Service Manual.
33. Refit the left hand and right hand bar end finishers, using new M6 x 16 mm countersunk head encapsulated screws from the kit, as described in the Service Manual. Tighten the finisher screws to **5 Nm**.

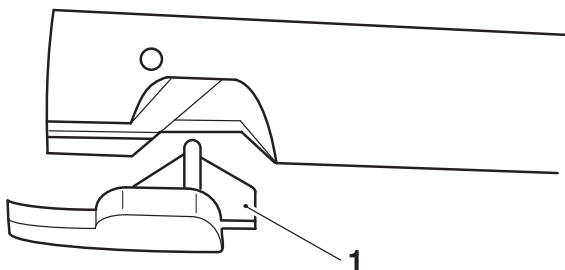
Rocket 3 Fitting Instructions

1. Remove the rider and passenger seat, as described in the Service Manual.
2. Disconnect the battery as described in the Service Manual.
3. Remove the bar end finishers from the left and right hand handlebars as described in the Service Manual, and retain for reuse if the motorcycle is to be returned to its original condition. Discard the fixings.
4. Release the two fixings securing the left hand handlebar grip to the handlebar and slide the handlebar grip off the handlebar. Discard the fixings and washers. Retain the grip for reuse if the motorcycle is to be returned to its original condition.



1. Fixing (one of two shown)
2. Washer (one of two shown)

5. If fitted, remove the plastic insert from the end of the left hand side of the handlebars, as shown. Retain the plastic insert for reuse if the motorcycle is to be returned to its original condition.



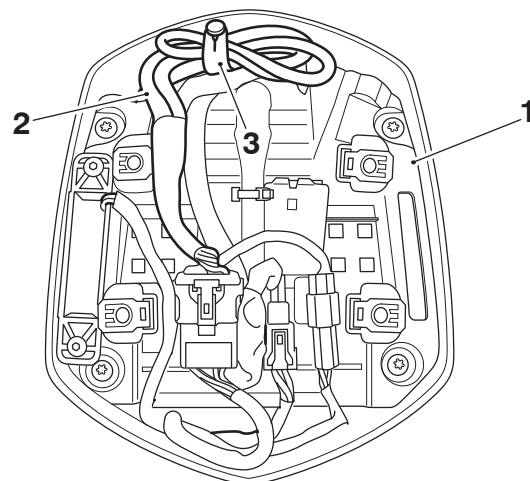
1. Plastic insert

6. Remove the twist grip from the right hand side of the handlebars, as described in the Service Manual. Retain the twist grip for reuse if the motorcycle is to be returned to its original condition.

NOTICE

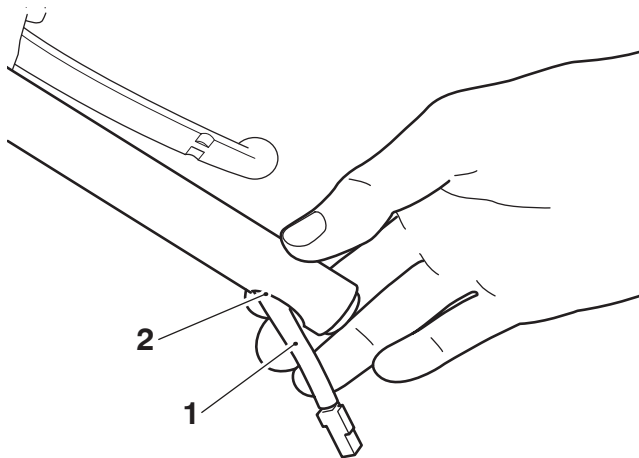
The heated grip harness is an original equipment fitment. The subharness provided in the kit is not required for Rocket 3 models.

7. Remove the flyscreen as described in the Service Manual. Retain the flyscreen, finishers and fixings for reuse.
8. If fitted, remove the rubber strap retaining the left hand and right hand heated grip harnesses. This will allow unrestricted movement of the harnesses through the handlebar.



1. Flyscreen mount
2. Heated grip harnesses
3. Rubber strap, where fitted

9. Locate the heated grip harness connectors in the end of the handlebars on the left hand and right hand side of the motorcycle. Carefully pull the heated grip harnesses out through the slots in the handlebar end weight mountings.



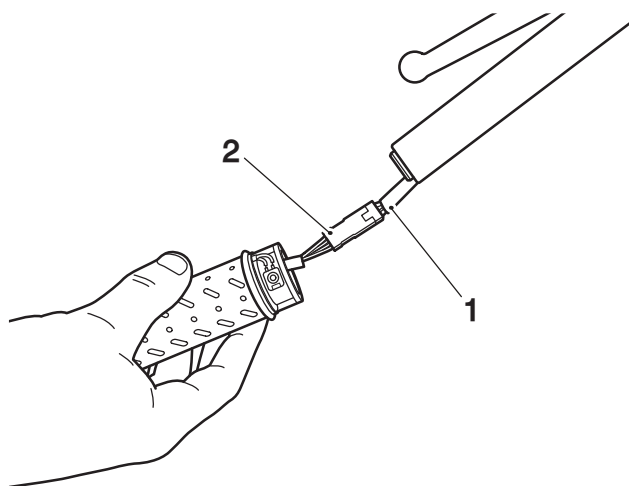
1. Heated grip harness connector (right hand side shown)
2. Slot, handlebar

NOTICE

A wiring harness which becomes trapped or kinked during installation, or motorcycle operation, may result in wiring harness damage and electrical malfunctions.

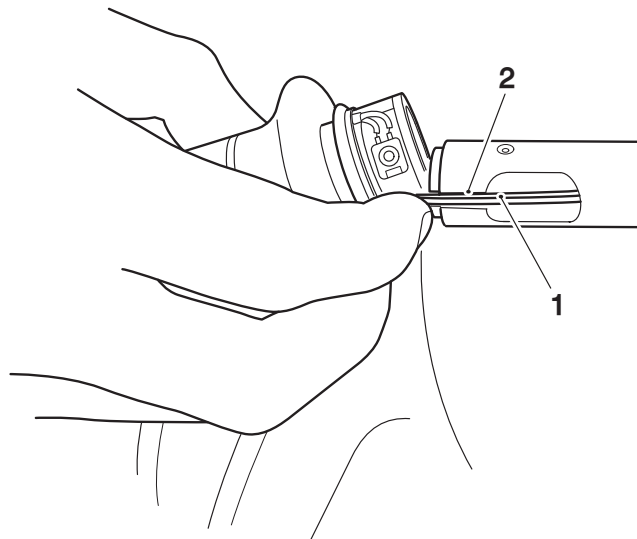
Left Hand Side

10. Connect the heated grip harness connector to the left hand heated grip electrical connector.



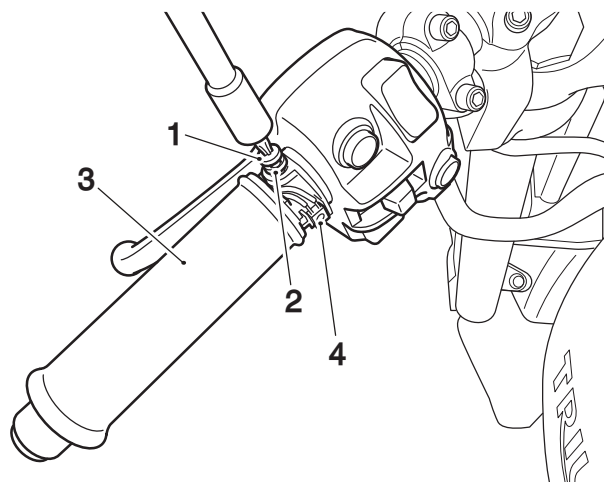
1. Heated grip harness connector)
2. Heated grip connector

11. When fitting the grip onto the handlebar, carefully pull the harness back through the handlebar ensuring the harness/heated grip connection is positioned into the handlebar and the wires remain in the slot in the bar end.



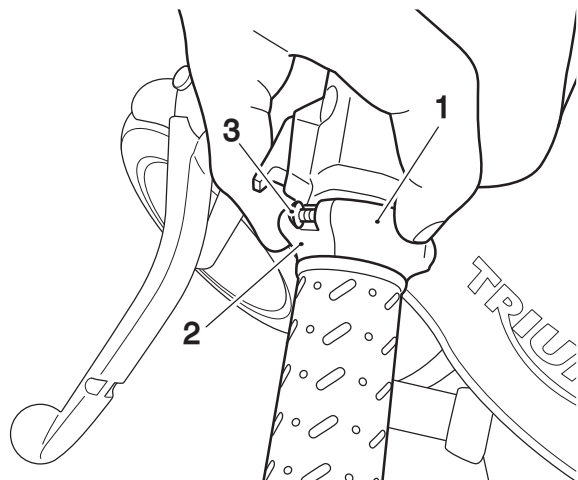
1. Wires
2. Slot, handlebar

12. Make sure the grip is in the orientation shown below with the switch contacts facing the rider. Secure the new grip with the pan head selftapping screws and washers provided in the kit. Tighten the fixings to **2.5 Nm**.



1. Screw, pan head self-tapping (one of two shown)
2. Washer (one of two shown)
3. Heated grip
4. Switch contacts

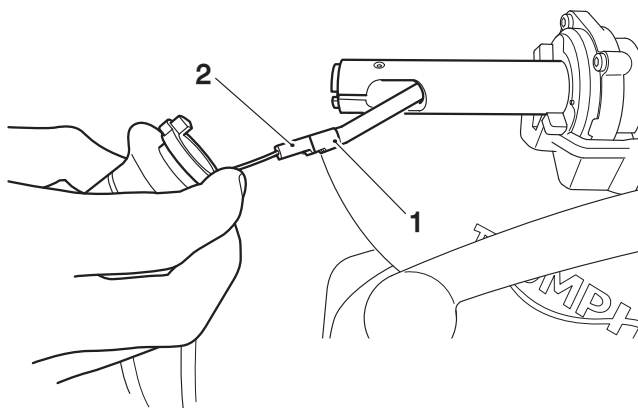
13. Fit the upper and lower switch housings on to the heated grip and retain with the Torx head self-tapping screws provided in the kit. Tighten the screws to **1 Nm**.



- 1. Upper switch housing
- 2. Lower switch housing
- 3. Screw, Torx head self-tapping (one of two shown)

Right Hand Side

14. Connect the heated grip harness connector to the right hand heated grip (twist grip) connector.



- 1. Heated grip harness connector
- 2. Heated twist grip connector

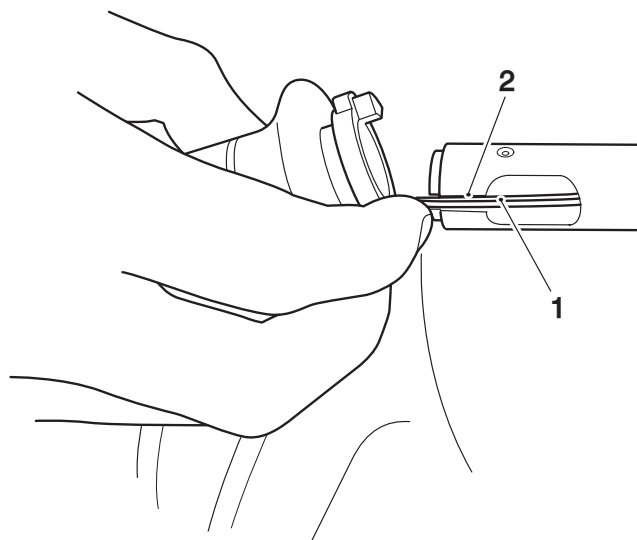
NOTICE

A wiring harness which becomes trapped or kinked during installation, or motorcycle operation, may result in wiring harness damage and electrical malfunctions.

NOTICE

The method of fitting the right hand heated grip (twist grip) to the twist grip position sensor and handlebars is the same as that for the original twist grip, as described in the Service Manual.

15. When fitting the grip onto the handlebar, carefully pull the harness back through the handlebar ensuring the harness/heated grip connection is positioned into the handlebar.



- 1. Wires
- 2. Slot, handlebar

16. Make sure there is enough slack in the wires for the twist grip to rotate and the wires not to become trapped.

⚠ WARNING

Check the operation of the right hand heated grip (twist grip).

Make sure that the rearward and forward movement of the twist grip is smooth, without tightness, and will return to the throttle closed position when released.

A tight or stuck twist grip may lead to loss of motorcycle control which could result in serious injury or death.

17. Refit the twist grip position sensor and tighten the fixings to **2.5 Nm**.
18. Carefully check that the twist grip rotates smoothly through its full range of movement, and is not restricted in any way. If any tightness or resistance is felt, check and rectify the cause before riding the motorcycle.
19. Make sure the throttle is fully closed, and the electrical cable inside the twist grip has adequate slack to allow correct throttle operation.

⚠ WARNING

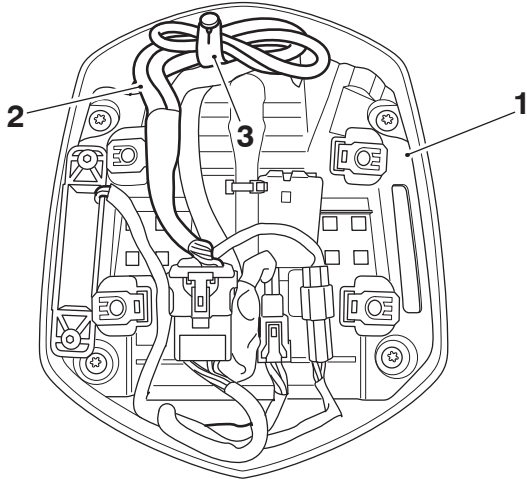
Move the handlebars to the left and right full lock checking that the cables and harness do not bind.

A cable or harness that binds will restrict the steering and may lead to loss of motorcycle control which could result in serious injury or death.

NOTICE

A wiring harness which becomes trapped or kinked during installation, or motorcycle operation, may result in wiring harness damage and electrical malfunctions.

20. Make sure any excess heated grip harness is neatly stowed in the flyscreen mounting and retained with a rubber strap from the kit, as shown.



1. Flyscreen mount
2. Heated grip harnesses
3. Rubber strap, where fitted

21. Refit the flyscreen with the original finishers and fixings, as described in the Service Manual.
22. Reconnect the battery, as described in the Service Manual.
23. Refit the rider and passenger seats as described in the Service Manual.
24. Refit the left hand and right hand bar end finishers, using new M6 x 16 mm countersunk head encapsulated screws from the kit, as described in the Service Manual. Tighten the finisher screws to **5 Nm**.

All Speed Triple and Rocket 3 Models

Heated Grip System Testing

⚠ DANGER

Never start the engine or run the engine in a confined area.

Always operate the motorcycle in the open air or in an area with adequate ventilation.

Exhaust fumes are poisonous and will cause loss of consciousness and death within a short period of time.

NOTICE

During the initial engine start up phase the engine control module will run a self check of the heated grip.

1. Start the engine and allow to idle to avoid discharging the battery.
2. Check the temperature of the heated grip increases.
3. Fuse number 4 of the front fuse box protects the heated grip circuit. Refer to the label in the fuse box lid for fuse amperage.

Operation

The heated grips work when the ignition is switched on. However, it is recommended that they are only used when the engine is running to avoid draining the battery.

The heated grips have three operating modes, HIGH, MEDIUM and LOW. Press the heated grip button and the status will be shown on the display screen as a heated grip symbol in different colours, as described below:

- Press once - HIGH: RED symbol with 3 dots.
- Press Twice - MEDIUM: ORANGE symbol with 2 dots.
- Press Three times - LOW: YELLOW symbol with 1 dot.

To switch OFF the heated grips, press and release the button until a GREY heated grip symbol is shown in the display screen. After three seconds, the heated grips symbol will disappear from the display screen. The heated grips are also switched off when the ignition is switched off.

For maximum benefit from cold conditions, use the heated grips in the HIGH status initially and when the grips have warmed up, change the status to LOW.

Automatic Shutdown

If heated grips are fitted and are on with the engine not running, over a period of time, the battery voltage may drop below 11.8 Volts and 'LoBatt' is then shown in the display screen for three seconds.

If the heated grips are on and 'LoBatt' is shown, then the heated grips are automatically switched off to prevent further discharge of the battery. It is not possible to resume heated grip operation until the engine has been running and the battery voltage has increased above 11.8 Volts.

In the event of a short circuit issue, 'HgrOFF' is shown in the display screen and the heated grips are automatically switched off. The heated grips can be switched back on after 25 seconds

WARNING

After fitting the accessory kit the motorcycle will exhibit new handling characteristics.

Operate the motorcycle in a safe area free from traffic to gain familiarity with any new characteristics.

Operation of the motorcycle when not familiar with any new handling characteristics may lead to loss of motorcycle control which could result in serious injury or death.

WARNING

If, after fitting this accessory kit, you have any doubt about the performance of any aspect of the motorcycle, contact a competent person with the specialist knowledge and technical understanding of motorcycles, such as an authorised Triumph dealer.

Riding a motorcycle when there is any doubt as to any aspect of the performance of the motorcycle may lead to loss of motorcycle control which could result in serious injury or death.

WARNING

Never ride an accessory-equipped motorcycle at speeds above 80 mph (130 km/h).

Remember that the 80 mph (130 km/h) limit will be reduced by the fitting of non-approved accessories, incorrect loading, worn tyres, overall motorcycle condition and poor road or weather conditions.

The presence of accessories will cause changes in the stability and handling of the motorcycle. Failure to allow for changes in motorcycle stability may lead to loss of motorcycle control which could result in serious injury or death.

WARNING

High-speed operation should only be attempted by riders who have been instructed in the techniques necessary for high-speed riding and are familiar with the motorcycle's characteristics in all conditions.

Only operate this Triumph motorcycle at high speed in closed-course, on-road competition or on closed-course racetracks.

High-speed operation in any other circumstances is dangerous and may lead to loss of motorcycle control which could result in serious injury or death.

NOTICE

The motorcycle must not be operated above the legal road speed limit except in closed-course conditions.