



Accessory Fitting Instructions

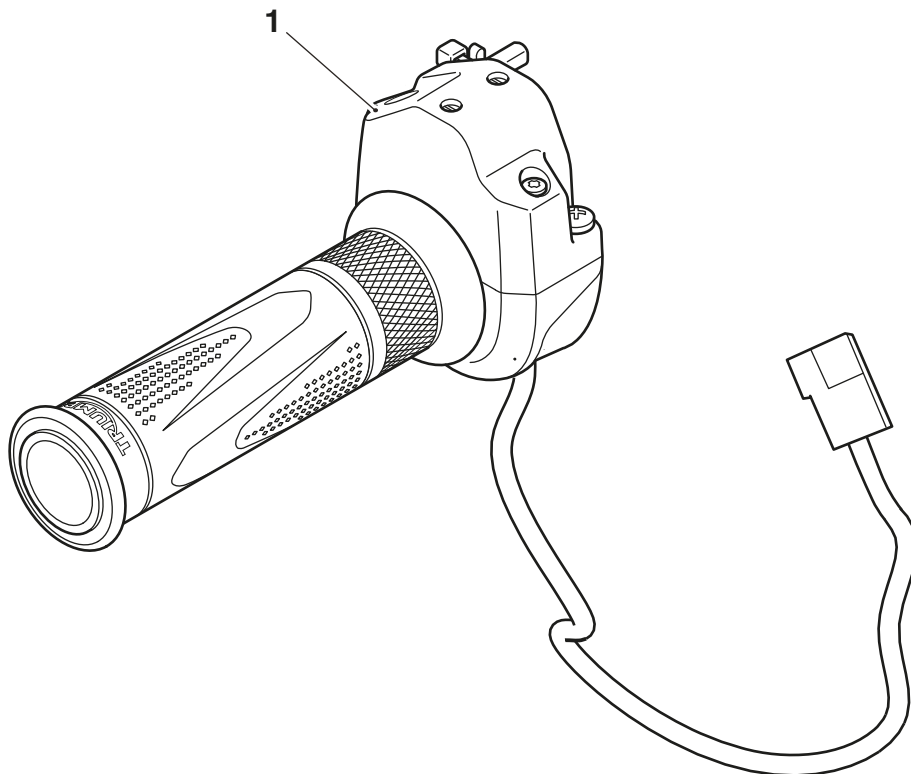
De-Restrictor Kit	
Kit number	Models Affected
A9638267	Street Triple S A2, Restricted

Thank you for choosing this Triumph genuine accessory kit. This accessory kit is the product of Triumph's use of proven engineering, exhaustive testing, and continuous striving for superior reliability, safety and performance.

Completely read all of these instructions before commencing the installation of the accessory kit in order to become thoroughly familiar with the kit's features and the installation process.

These instructions should be considered a permanent part of your accessory kit, and should remain with it even if your accessory equipped motorcycle is subsequently sold.

Parts supplied



1. Twist grip position sensor	1 off
-------------------------------	-------



Warning

The accessory kits covered in this instruction are designed for use on specific models of Triumph motorcycle. The accessory kits and the models applicable are listed at the start of the instruction. They should not be fitted to any other Triumph model or to any other manufacturer's motorcycle. Fitting an accessory kit to a Triumph model not listed, or to any other manufacturer's motorcycle will affect the performance, stability and handling of the motorcycle. This may result in loss of motorcycle control and an accident.



Warning

Always have Triumph approved parts, accessories and conversions fitted by a trained technician of an authorised Triumph dealer. The fitment of parts, accessories and conversions by a technician who is not of an authorised Triumph dealer may affect the handling, stability or other aspects of the motorcycle's operation which may result in loss of motorcycle control and an accident.



Warning

Throughout this operation, ensure that the motorcycle is stabilised and adequately supported to prevent risk of injury from the motorcycle falling.

Note:

- Triumph offers a broad range of approved genuine accessories for your motorcycle. We cannot therefore cover all possible equipment variations in these instructions. For removal and installation of Triumph Genuine Accessories, always refer to the instructions supplied with the respective accessory kit. To obtain additional copies of any Triumph accessory instructions, visit www.triumphinstructions.com or contact your authorised Triumph dealer.

Note:

- Before fitting this accessory kit, ensure the owner of the motorcycle has been informed of the warnings contained in this instruction.

De-restricting the Motorcycle

Note:

- Prior to de-restricting the motorcycle, it is the responsibility of the dealer to obtain proof from the rider that they are licenced to ride an unrestricted motorcycle.**

- Remove the passenger seat, as described in the Service Manual.
- Remove the restricted twist grip position sensor as described in the Service Manual. Retain the twist grip position sensor for reuse if the motorcycle is to be returned to its original restricted condition.

Note:

- The procedure to fit the twist grip position sensor provided in the kit is the same as that for the original part.**

Note:

- The rubber grip on the twist grip position sensor in the kit is interchangeable with Triumph accessory grip kits.**
- Fit the twist grip position sensor from the kit, as described in the Service Manual.

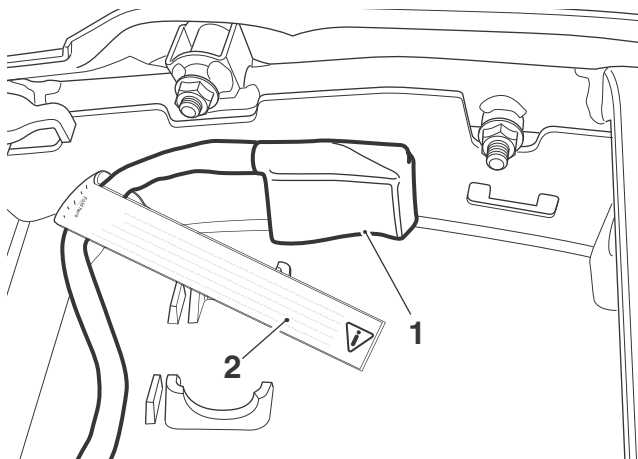
Note:

- The yellow label, if present, is to be removed from the diagnostic connector cable.**
- Record a note in the Service Record Book confirming the restricted calibration has been removed.

MANUFACTURER DIRECTED MAINTENANCE

DATE	REFERENCE Nº	WORK CARRIED OUT
//**		DO NOT REMOVE THIS LABEL. This motorcycle is fitted with a restricted engine calibration. Without the correct licence it is illegal to ride an unrestricted motorcycle in your country.
//**	*****	Restricted tune removed with the owner's consent.

5. Release the diagnostic connector from its locating tang.
6. Plug the diagnostic interface directly in to the diagnostic connector and download the latest un-restricted engine calibration to the ECM following the procedure listed on the 'Triumphonline.net' dealer web site.
7. When the diagnostic session is completed, disconnect the Triumph diagnostic interface.
8. Remove the yellow label, if present, from the diagnostic connector cable as shown below. Retain the yellow label to present to the owner.



1. Diagnostic connector cable
2. Label (if present)

9. Refit the diagnostic connector to its locating tang.
10. Refit the passenger seat, as described in the Service Manual.
11. Inform the owner that the motorcycle has been de-restricted and the Service Record Book has been amended.
12. Present the yellow label, where applicable, to the owner confirming the engine calibration is set to a full power version.

Notice

It is the registered keepers responsibility to ensure the vehicle registration documentation for the motorcycle is kept correctly updated, as required by the appropriate regional legislation. Always inform the correct authorities of any change in maximum power output of the motorcycle resulting in the fitting, or removal, of the restrictor kit. Failure to notify the appropriate authorities of any change to the power output of the motorcycle may contravene local laws in some countries and render the motorcycle illegal for road use.



Warning

After this restrictor kit accessory has been fitted by an authorised Triumph dealer, the performance of the motorcycle will be altered. If you have any doubt about the performance of any aspect of the motorcycle, contact an authorised Triumph dealer and do not ride the motorcycle until the authorised dealer has declared it fit for use. Riding a motorcycle when there is any doubt as to any aspect of the performance of the motorcycle may result in loss of control of the motorcycle leading to an accident.



Warning

After fitting the accessory kit the motorcycle will exhibit new handling characteristics. Operate the motorcycle in a safe area free from traffic to gain familiarity with any new characteristics. Operation of the motorcycle when not familiar with any new handling characteristics may result in loss of motorcycle control and an accident.



Warning

Never ride an accessory equipped motorcycle at speeds above 80 mph (130 km/h). The presence of accessories will cause changes in the stability and handling of the motorcycle. Failure to allow for changes in motorcycle stability may lead to loss of control or an accident. Remember that the 80 mph (130 km/h) limit will be reduced by the fitting of non-approved accessories, incorrect loading, worn tyres, overall motorcycle condition and poor road or weather conditions.



Warning

The motorcycle must not be operated above the legal road speed limit except in closed-course conditions.



Warning

Only operate this Triumph motorcycle at high speed in closed-course, on-road competition or on closed-course racetracks. High-speed operation should only be attempted by riders who have been instructed in the techniques necessary for high-speed riding and are familiar with the motorcycle's characteristics in all conditions.

High-speed operation in any other circumstances is dangerous and will lead to loss of motorcycle control and an accident.