



Accessory Fitting Instructions

Restrictor Kit	
Kit number	Models Affected
A9638259	Street Twin from model year 2018 up to VIN AE3381 with Euro 4 engine ECM (see below), Street Cup from model year 2018, Street Scrambler up to VIN AE9847 with Euro 4 engine ECM (see below)

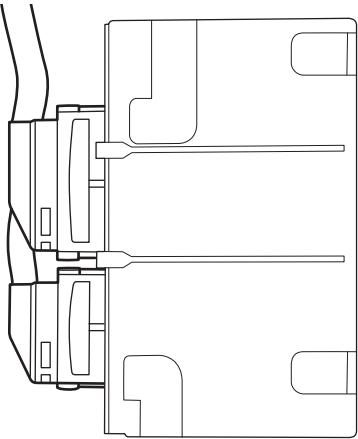
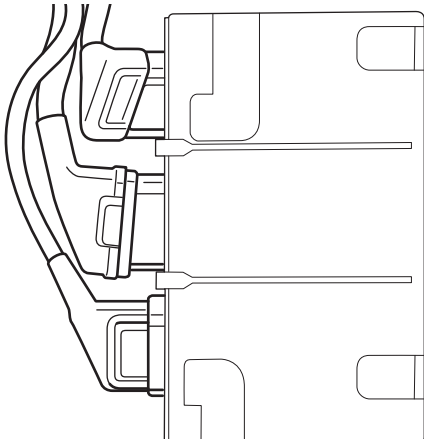
Thank you for choosing this Triumph genuine accessory kit. This accessory kit is the product of Triumph's use of proven engineering, exhaustive testing, and continuous striving for superior reliability, safety and performance.

Completely read all of these instructions before commencing the installation of the accessory kit in order to become thoroughly familiar with the kit's features and the installation process.

These instructions should be considered a permanent part of your accessory kit, and should remain with it even if your accessory equipped motorcycle is subsequently sold.

Note:

- The engine ECM is located under the seat.

Engine ECM Identification	
Euro 4 ECM	Euro 5 ECM
	
Two connectors	Three connectors

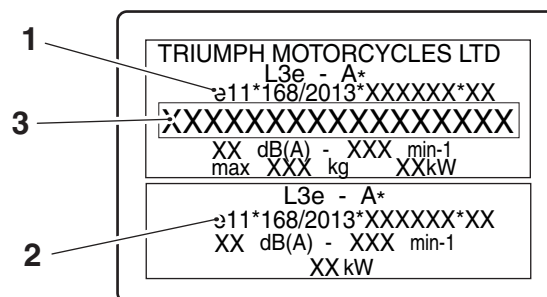
Notice

Do not attempt to convert the power output of motorcycles that are not approved for power output conversion.

Altering the power output of motorcycles that are not approved for power output conversion is illegal under EU law.

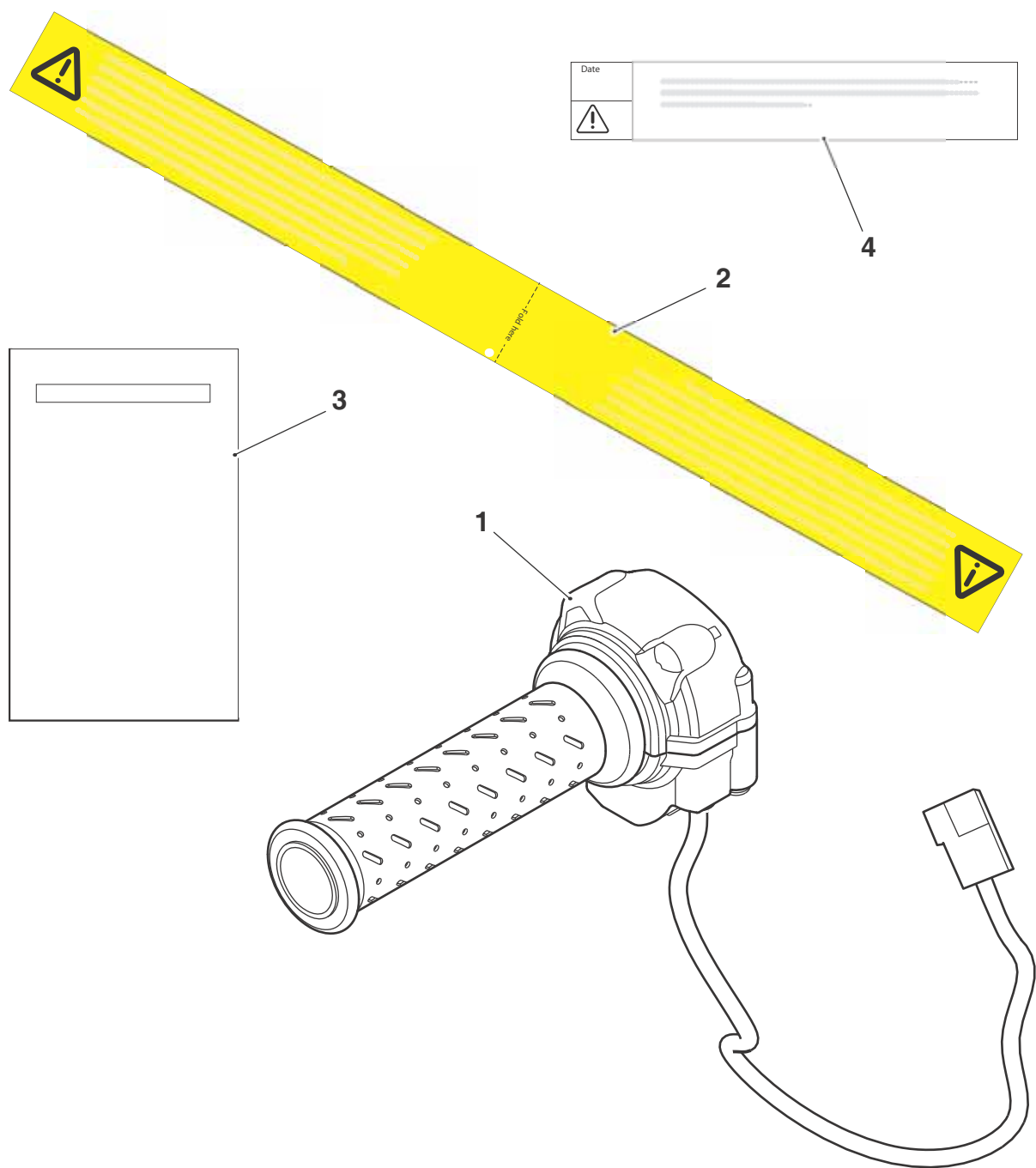
Note:

- Motorcycles approved for power output conversion are fitted with the label shown below. The label is attached to the motorcycle's headstock area and displays both full power and restricted power type approval numbers.
- The model year of the motorcycle can be identified by the 11th character of the VIN number. The 11th character is H for 2017 model year, and J for 2018 model year.



1. Full power type approval number
2. Restricted power approval number
3. Vehicle Identification Number (VIN)

Parts supplied: A9638259



1. Restricted twist grip position sensor	1 off	3. Restriction certificate (included at the end of these instructions)	1 off
2. Label (diagnostic connector cable)	1 off	4. Label (Service Record Book)	1 off



Warning

Fit only genuine Triumph accessories to those models approved by Triumph as listed in the associated Triumph fitting instructions. The accessory kits covered in this instruction are designed for use on specific models of Triumph motorcycle. The accessory kits and the models applicable are listed at the start of the instruction. They should never be fitted to any other Triumph model or to any other manufacturer's motorcycle. Fitting an accessory kit to a Triumph model not listed, or to any other manufacturer's motorcycle will affect the performance, stability and handling of the motorcycle. This may affect the rider's ability to control the motorcycle and could result in an accident causing severe injuries or death.



Warning

Always have Triumph approved parts, accessories and conversions fitted by a trained technician of an authorised Triumph dealer. The fitment of parts, accessories and conversions by a technician who is not of an authorised Triumph dealer may affect the handling, stability or other aspects of the motorcycle's operation which may result in loss of motorcycle control and an accident.



Warning

Make sure the motorcycle is supported. A correctly supported motorcycle will help prevent it from falling. An unstable motorcycle may fall, causing injury to the operator or damage to the motorcycle.

Note:

- Triumph offers a broad range of approved genuine accessories for your motorcycle. We cannot therefore cover all possible equipment variations in these instructions. For removal and installation of Triumph Genuine Accessories, always refer to the instructions supplied with the respective accessory kit. To obtain additional copies of any Triumph accessory instructions, visit www.triumphinstructions.com or contact your authorised Triumph dealer.

Note:

- Before fitting this accessory kit, ensure the owner of the motorcycle has been informed of the warnings contained in this instruction.

Installation

- Remove the passenger seat, as described in the Service Manual.
- Remove the original twist grip position sensor as described in the Service Manual. Retain the twist grip position sensor for reuse if the motorcycle is to be returned to its original condition.

Note:

- The procedure to fit the restricted twist grip position sensor provided in the kit is the same as that for the original part.

Note:

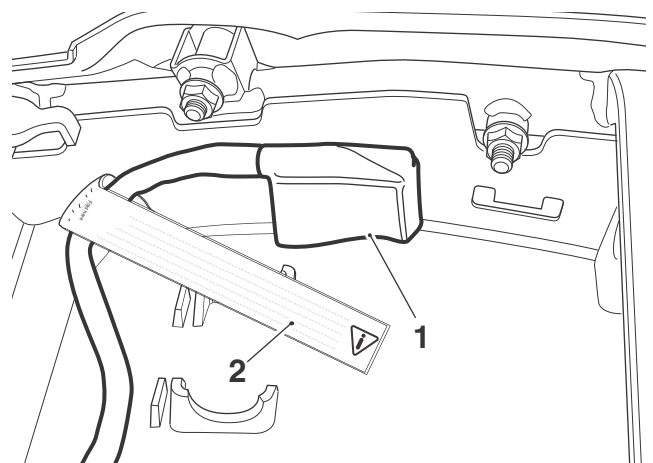
- The rubber grip on the twist grip position sensor in the kit is interchangeable with Triumph accessory grip kits.

- Fit the twist grip position sensor from the kit, as described in the Service Manual.

Note:

- The yellow label within this accessory kit is to be attached to the Diagnostic connector cable.
- The white label within this accessory kit is to be attached to the Manufacturer Directed Maintenance section of the motorcycles Service Record Book.

- Release the diagnostic connector from its locating tang.
- Plug the Triumph diagnostic interface directly in to the diagnostic connector and download the restricted engine calibration to the ECM following the procedure listed on the 'Triumphonline.net' dealer web site.
- When the diagnostic session is completed, disconnect the Triumph diagnostic interface.
- Attach the yellow label to the diagnostic connector cable as shown below.




1. Diagnostic connector cable

2. Label

8. Refit the diagnostic connector to its locating tang.
9. Attach the white label to page five (5) of the Service Record Book as shown below.

MANUFACTURER DIRECTED MAINTENANCE

DATE	REFERENCE Nº	WORK CARRIED OUT
//**	DO NOT REMOVE THIS LABEL. This motorcycle is fitted with a restricted engine calibration. Without the correct licence it is illegal to ride an unrestricted motorcycle in your country.	
		

10. Refit the passenger seat, as described in the Service Manual.
11. Print out and complete the power restriction certificate included at the end of these instructions and hand to the owner of the motorcycle.

Routine Maintenance (Restricted Motorcycles)

Note:

- Refer to the service record book and confirm a restricted calibration is installed.
- If unsure contact the motorcycle owner and confirm their eligibility to ride a de-restricted motorcycle.
- When carrying out an Autoscan as part of the routine maintenance schedule, a restricted calibration must only be replaced by a newer version of the restricted calibration.

De-restricting the Motorcycle

Note:


- Prior to de-restricting the motorcycle, it is the responsibility of the dealer to obtain proof from the rider that they are licenced to ride an unrestricted motorcycle.

1. Remove the passenger seat, as described in the Service Manual.
2. Remove the restricted twist grip position sensor as described in the Service Manual. Retain the twist grip position sensor for reuse if the motorcycle is to be returned to its restricted condition.
3. Refit the original twist grip position sensor, as described in the Service Manual.

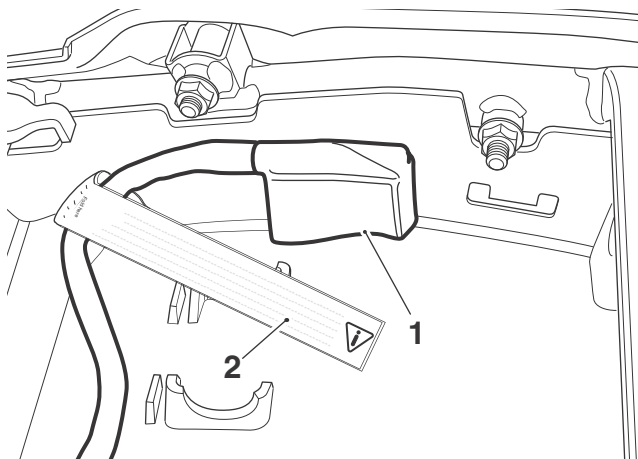
Note:

- The yellow label is to be removed from the Diagnostic connector cable.
4. Record a note on page five (5) of the Service Record Book confirming the restricted calibration has been removed.

MANUFACTURER DIRECTED MAINTENANCE

DATE	REFERENCE Nº	WORK CARRIED OUT
//**	DO NOT REMOVE THIS LABEL. This motorcycle is fitted with a restricted engine calibration. Without the correct licence it is illegal to ride an unrestricted motorcycle in your country.	
		
//**	*****	Restricted tune removed with the owner's consent.

5. Release the diagnostic connector from its locating tang.
6. Plug the diagnostic interface directly in to the diagnostic connector and download the latest un-restricted engine calibration to the ECM following the procedure listed on the 'Triumphonline.net' dealer web site.
7. When the diagnostic session is completed, disconnect the Triumph diagnostic interface.
8. Remove the yellow label from the diagnostic connector cable as shown below. Retain the yellow label to present to the owner.



1. Diagnostic connector cable
2. Label

9. Refit the diagnostic connector to its locating tang.
10. Refit the passenger seat, as described in the Service Manual.
11. Inform the owner that the motorcycle has been de-restricted and the Service Record Book has been amended.
12. Present the yellow label previously removed to the owner confirming the engine calibration is set to a full power version.

Notice

It is the registered keepers responsibility to ensure the vehicle registration documentation for the motorcycle is kept correctly updated, as required by the appropriate regional legislation. Always inform the correct authorities of any change in maximum power output of the motorcycle resulting in the fitting, or removal, of the restrictor kit. Failure to notify the appropriate authorities of any change to the power output of the motorcycle may contravene local laws in some countries and render the motorcycle illegal for road use.



Warning

After this restrictor kit accessory has been fitted by an authorised Triumph dealer, the performance of the motorcycle will be altered. If you have any doubt about the performance of any aspect of the motorcycle, contact an authorised Triumph dealer and do not ride the motorcycle until the authorised dealer has declared it fit for use. Riding a motorcycle when there is any doubt as to any aspect of the performance of the motorcycle may result in loss of control of the motorcycle leading to an accident.



Warning

After fitting the accessory kit the motorcycle will exhibit new handling characteristics. Operate the motorcycle in a safe area free from traffic to gain familiarity with any new characteristics. Operation of the motorcycle when not familiar with any new handling characteristics may result in loss of motorcycle control and an accident.



Warning

Never ride an accessory equipped motorcycle at speeds above 80 mph (130 km/h). The presence of accessories will cause changes in the stability and handling of the motorcycle. Failure to allow for changes in motorcycle stability may lead to loss of control or an accident. Remember that the 80 mph (130 km/h) limit will be reduced by the fitting of non-approved accessories, incorrect loading, worn tyres, overall motorcycle condition and poor road or weather conditions.



Warning

The motorcycle must not be operated above the legal road speed limit except in closed-course conditions.



Warning

Only operate this Triumph motorcycle at high speed in closed-course, on-road competition or on closed-course racetracks. High-speed operation should only be attempted by riders who have been instructed in the techniques necessary for high-speed riding and are familiar with the motorcycle's characteristics in all conditions.

High-speed operation in any other circumstances is dangerous and will lead to loss of motorcycle control and an accident.

Certificate of Power
Triumph 35 kW Restrictor Kit
A9638259



Model:.....
Modell / Modelo Modèle / Modello

Vin:.....
Fin / VIN / VIN / N. di telaio

Engine Number:.....
Motornummer / Número de motor / Numéro de
moteur / Matricola motore

Registration:.....
Amtliches Kennzeichen / Número de registro / Numéro
d'immatriculation / Numero di immatricolazione

ENGLISH We hereby certify that the above stated machine has been fitted with Triumph power restrictor to maintain a power output lower than 35 kW (47.6 PS) as measures to directive 95/1/EC. This kit has been installed in accordance with Triumph Motorcycles fitting instructions.

DEUTSCH Wir bescheinigen hiermit, dass in das oben angegebene Fahrzeug ein Triumph-Drosselsatz eingebaut wurde, durch den die Motorleistung, gemessen in Übereinstimmung mit Richtlinie 95/1/EG, auf unter 35 kW (47.6 PS) begrenzt wird. Der Montagesatz wurde entsprechend den Montageanweisungen von Triumph Motorcycles installiert.
Warnung: Dieser Drosselsatz darf erst wieder entfernt werden, wenn die entsprechende Fahrerlaubnis erworben wurde.
Eine Kopie der vorliegenden Bescheinigung muss beim Händler aufbewahrt werden.

ESPAÑOL Por la presente certificamos que en el vehículo indicado anteriormente se ha instalado un juego de limitador de potencia de Triumph para mantener una salida de potencia inferior a 35 kW (47.6 PS) medida conforme a la directiva 95/1/CE. Este juego se ha instalado siguiendo las instrucciones de instalación de Triumph Motorcycles.
Advertencia: Este limitador no se debe retirar del vehículo hasta que se haya obtenido el permiso de conducción correspondiente.
El concesionario guardará una copia de este certificado.

FRANÇAIS Nous certifions que le véhicule ci-dessus a été équipé d'un kit limiteur de puissance Triumph pour en réduire la puissance à moins de 35 kW (47.6 PS), mesurée conformément à la directive 95/1/EC. Ce kit a été installé conformément aux instructions de montage de Triumph Motorcycles.
Avertissement: Ce limiteur ne doit pas être retiré tant que le permis de conduire approprié n'a pas été obtenu.
Une copie de ce Certificat doit être conservée par le concessionnaire.

ITALIANO Con la presente si dichiara che la suddetta motocicletta è stata dotata di limitatore di potenza Triumph per mantenere l'erogazione di potenza inferiore a 35 kW (47.6 PS) misurati come da direttiva 95/1/CE. Questo kit è stato installato in base alle istruzioni di montaggio fornite da Triumph Motorcycles.
Avvertenza: Questo limitatore non deve essere smontato fino a quando non si è ottenuta la necessaria patente di guida
Una copia di questo certificato è conservata presso il Concessionario.

Dealer Name & Address:

Händler Name und Anschrift / Nombre y dirección del concesionario /
Nom et adresse du concessionnaire / Nome e indirizzo Concessionario



Dealer Stamp

Händlerstempel / Sello del distribuidor /
Timbre du revendeur / Timbro del rivenditore

Fitted By.....

Eingebaut durch / Instalado por / Monté par / Montato da

Date Fitted.....

Einbaudatum / Fecha de instalación / Date de montage /
Data di montaggio

Warning: This restrictor must not be removed until the relevant driving licence has been obtained.
A copy of this certificate to be kept with the dealer