



## Accessory Fitting Instructions

<b>Cruise Control Kit - Non DRL</b>	
<b>Kit Number</b>	<b>Models Affected</b>
A9638255	Bonneville T100 from VIN 759204 up to VIN 795172
A9638254	Bonneville T120 up to VIN 776086
A9638178	Bonneville T100 from VIN 795173 up to VIN AD4189 with Euro 4 engine ECM (see page 2), Bonneville T120 from VIN 776087 up to VIN AE2212 with Euro 4 engine ECM (see page 2), Bonneville T120 Black from VIN 776087 up to VIN AE3661 with Euro 4 engine ECM (see page 2)
A9638325	Bonneville T100 from VIN AC5927 with Euro 5 engine ECM (see page 2)
A9630247	Bonneville Bobber up to VIN AC6383
<b>Cruise Control Kit - DRL</b>	
<b>Kit Number</b>	<b>Models Affected</b>
A9638253	Bonneville T120 up to VIN 776086
A9638179	Bonneville T120 from VIN 776087 to VIN AE3661
A9630248	Bonneville Bobber up to VIN AC6383

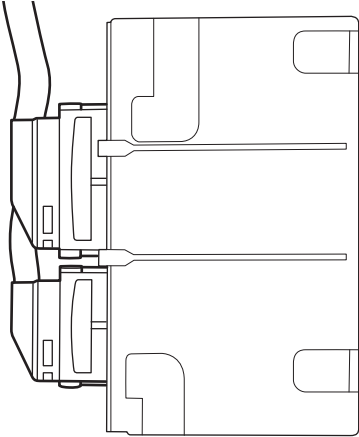
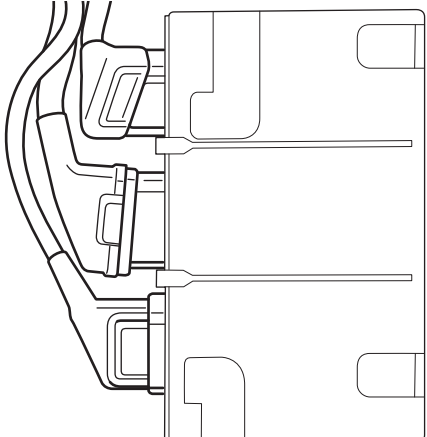
Thank you for choosing this Triumph genuine accessory kit. This accessory kit is the product of Triumph's use of proven engineering, exhaustive testing, and continuous striving for superior reliability, safety and performance.

Completely read all of these instructions before commencing the installation of the accessory kit in order to become thoroughly familiar with the kit's features and the installation process.

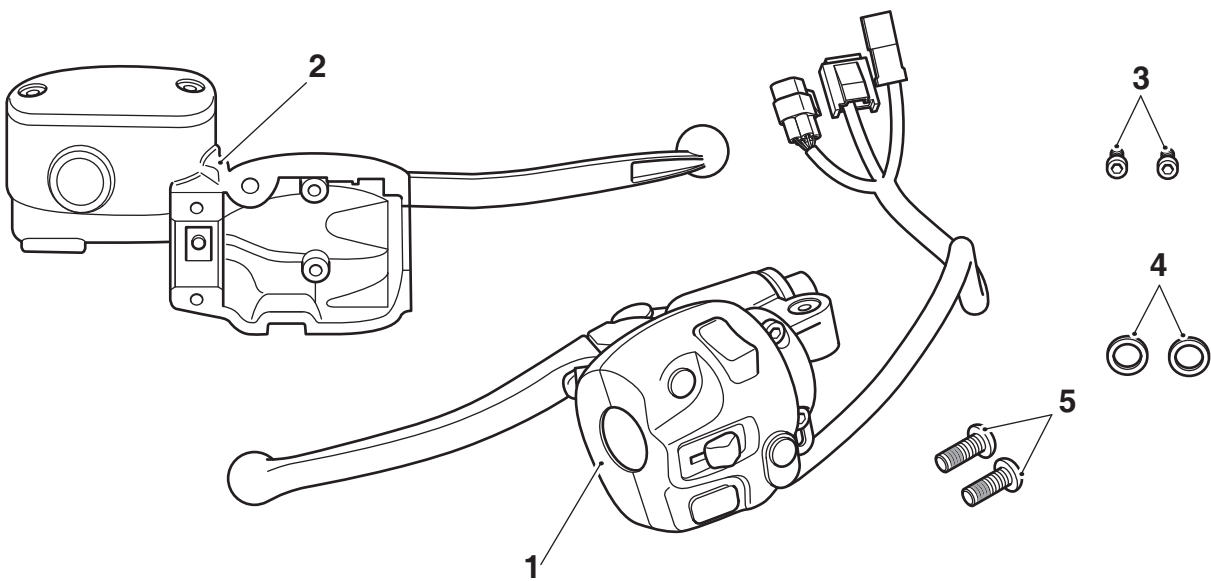
These instructions should be considered a permanent part of your accessory kit, and should remain with it even if your accessory equipped motorcycle is subsequently sold.

**Note:**

- The engine ECM is located under the seat.

Engine ECM Identification	
Euro 4 ECM	Euro 5 ECM
	
Two connectors	Three connectors

**Parts Supplied**



1. Switch housing and clutch lever assembly	1 off	4. Washer (A9638253, A9638254 and A9638255 only)	2 off
2. Master cylinder and brake lever assembly (A9638253, A9638254 and A9638255 only)	1 off	5. Fixing, M5 x 12 mm Pan head (A9630247 and A9630248 only)	2 off
3. Fixing, M4 x 12 mm (A9638253, A9638254 and A9638255 only)	2 off		



### Warning

Fit only genuine Triumph accessories to those models approved by Triumph as listed in the associated Triumph fitting instructions. The accessory kits covered in this instruction are designed for use on specific models of Triumph motorcycle. The accessory kits and the models applicable are listed at the start of the instruction. They should never be fitted to any other Triumph model or to any other manufacturer's motorcycle. Fitting an accessory kit to a Triumph model not listed, or to any other manufacturer's motorcycle will affect the performance, stability and handling of the motorcycle. This may affect the rider's ability to control the motorcycle and could result in an accident causing severe injuries or death.



### Warning

Always have Triumph approved parts, accessories and conversions fitted by a trained technician of an authorised Triumph dealer. The fitment of parts, accessories and conversions by a technician who is not of an authorised Triumph dealer may affect the handling, stability or other aspects of the motorcycle's operation which may result in loss of motorcycle control and an accident.



### Warning

Always make sure that the newly installed wiring does not chafe against other parts of the motorcycle such that it may be rubbed through and cause an electrical problem. In addition, always make sure that the newly installed wiring will not restrict steering movement. Both conditions are hazardous and could give rise to a dangerous riding condition resulting in a fire, loss of motorcycle control and an accident.



### Warning

A torque wrench of known accurate calibration must be used when fitting this accessory kit. Failure to tighten any of the fasteners to the correct torque specification may result in loss of motorcycle control and an accident.



### Warning

Make sure the motorcycle is supported. A correctly supported motorcycle will help prevent it from falling. An unstable motorcycle may fall, causing injury to the operator or damage to the motorcycle.

#### Note:

- **Triumph offers a broad range of approved genuine accessories for your motorcycle. We cannot therefore cover all possible equipment variations in these instructions. For removal and installation of Triumph Genuine Accessories, always refer to the instructions supplied with the respective accessory kit. To obtain additional copies of any Triumph accessory instructions, visit [www.triumphinstructions.com](http://www.triumphinstructions.com) or contact your authorised Triumph dealer.**

#### All Models

1. Remove the seat, as described in the Service Manual.
2. Disconnect the battery, negative (black) lead first.
3. Disconnect the clutch cable from the clutch lever, as described in the Service Manual.
4. Disconnect the left hand switch harness connector from the main harness connector, as described in the Service Manual.

#### Note:

- **Note the routing of the left hand switch harness before removal to aid reassembly.**
5. Remove the switch housing and clutch lever assembly, as described in the Service Manual. Retain the switch housing and clutch lever assembly for reuse if the motorcycle is to be returned to its original condition.

#### Note:

- **The method of fitting the switch housing and clutch lever assembly provided in the kit is the same as that for the original switch housing and clutch lever assembly.**
6. Fit the switch housing and clutch lever assembly provided in the kit, as described in the Service Manual.
  7. Route the left hand switch harness to the main harness connector following the routing of the original switch harness noted on removal.

8. Connect the left hand switch harness to the main harness connector, as described in the Service Manual.
9. Connect and adjust the clutch cable to the clutch lever, as described in the Service Manual.

### Bonneville T100 from VIN 759204 to VIN 795172 and Bonneville T120 up to VIN 776086 Only

10. Remove the master cylinder and brake lever assembly, as described in the Service Manual. Discard the TPS (twist grip position sensor) fixings. Retain the lever clamp, brake light switch and all other fixings for reuse. Make sure the switch housing is supported when the master cylinder and brake lever have been removed.



### Caution

To prevent damage, make sure that any residual brake fluid is wiped clean from the reservoir cap when it has been removed from the master cylinder and brake fluid does not come into contact with any part of the bodywork.

11. Remove the reservoir cap from the master cylinder. Retain the reservoir cap and fixings for reuse. Discard the master cylinder and brake lever assembly.

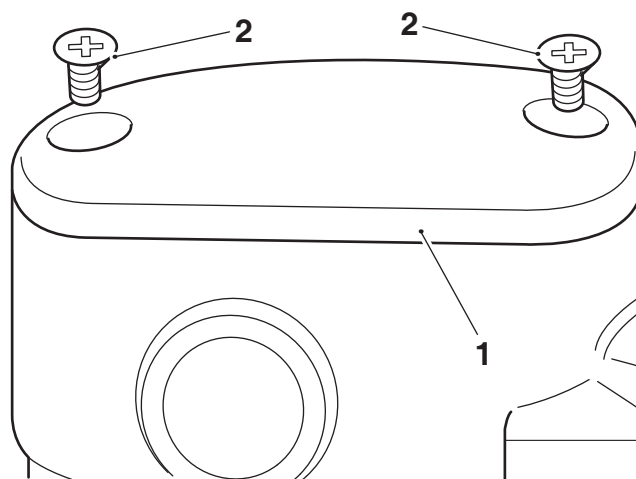
#### Note:

- **The method of fitting the master cylinder and brake lever assembly provided in the kit is the same as that for the original master cylinder and brake lever assembly.**
- **When fitting the new master cylinder and brake lever assembly the M4 x 12 mm fixings provided in the kit must be used to secure the TPS (twist grip position sensor) to the master cylinder and the washers provided in the kit must be used when fitting the brake line to the master cylinder.**

### Notice

The reservoir cap on the master cylinder and brake lever assembly provided in the kit must be replaced with the original reservoir cap. Fitting the new master cylinder and brake lever assembly with the new reservoir cap may contravene local laws in some countries and render the motorcycle illegal for road use.

12. Fit the new master cylinder and brake lever assembly using the M4 x 12 mm fixings and washers provided in the kit, as described in the Service Manual. After bleeding the front brake system do not refit the reservoir cap. Discard the reservoir cap and fixings.
13. Fit the reservoir cap from the original master cylinder on to the new master cylinder and secure with the original fixings. Tighten the fixings to **1 Nm**.



1. Reservoir cap
2. Fixings

### All Models

14. Reconnect the battery, positive (red) lead first and tighten the battery terminals to **4.5 Nm**.
15. Refit the seat, as described in the Service Manual.

### All Models excluding Bonneville T100 from VIN AC5927 and Bonneville T120 with Euro 5 ECM

#### Engine Calibration Download

#### Note:

- **The correct engine calibration (for use with cruise control) must be downloaded to the engine ECM prior to starting the engine. This information can be found in the Triumph Diagnostic Tool user guide.**
1. Connect the Triumph diagnostic tool and download the correct engine calibration to the engine ECM following the Triumph Diagnostic Tool user guide.

## Bonneville T100 from VIN AC5927 and Bonneville T120 with Euro 5 ECM Models Only

### Cruise Control Activation

1. Connect the Triumph diagnostic tool to the motorcycle and turn the ignition ON.
2. Make sure the engine stop switch is in the RUN (ON) position.
3. Navigate to 'ENGINE DIAGNOSTICS'.
4. Click the 'Adjust' tab.
5. Select 'Enable/Disable Cruise Control' from the menu.
6. Click 'Enable'.

### All models

#### Note:

- **After enabling the cruise control system, DTC P1575 will be stored until the Cruise Control Switch check has been completed.**
- **The Cruise Control Switch Check must be performed within 255 seconds of turning the motorcycle ignition ON.**
- **DTC P1575 will automatically clear as soon as the switch check has been completed.**

1. Click the 'Function Test' tab.
2. Select 'Cruise Control Switch Check' from the menu.
3. Click 'Start' and follow the onscreen instructions to check each cruise control switch.
4. Click the 'Read DTCs' tab and check that DTC P1575 has cleared.

#### Note:

5. If P1575 is still present, turn the ignition OFF for 2 minutes. Turn the ignition ON and repeat the cruise control switch check within 255 seconds.

## Cruise Control Operation



### Warning

Cruise control must only be used where you can ride safely at a steady speed.

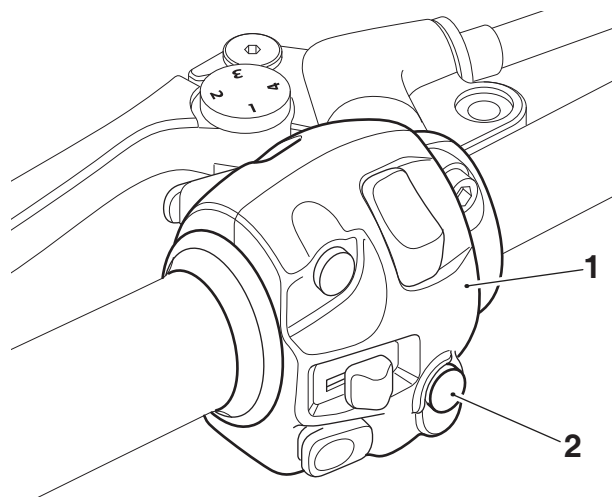
Cruise control should not be used when riding in heavy traffic, on roads with sharp/blind bends or when the road conditions are slippery.

Using cruise control in heavy traffic, on roads with sharp/blind bends or when the road conditions are slippery may result in loss of motorcycle control and an accident.

#### Note:

- **Cruise control may not function if there is a malfunction with the ABS system and the ABS warning light is illuminated.**

The cruise control SET button is located on the left hand switch housing and can be operated with minimum movement of the rider.

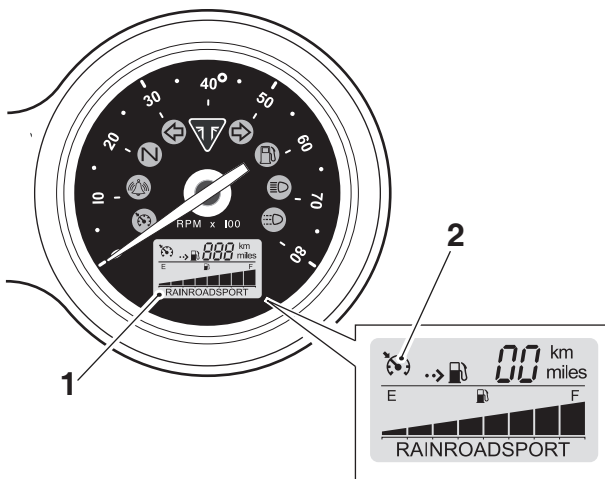


1. Left hand switch housing
2. Cruise control SET button

## Activating Cruise Control

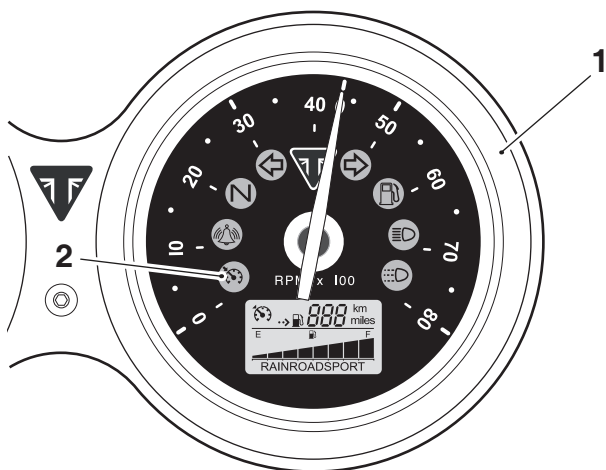
### Note:

- Cruise control can be switched on at any time, but it cannot be activated until the following conditions have been met:
  - The motorcycle must be travelling at a speed between 19 and 100 mph (30 and 160 km/h).
  - The motorcycle must be in 3rd gear or higher.
1. Press the cruise control SET button to turn on the cruise control system. The cruise control symbol will be visible in the tachometer status display screen.



1. Tachometer status display screen
2. Cruise control symbol

2. When the desired cruising speed is achieved, press the cruise control SET button again to activate the cruise control. The cruise control light in the tachometer will illuminate indicating that the cruise control is active.



1. Tachometer
2. Cruise control light

## Deactivating Cruise Control

The cruise control can be deactivated by one of the following methods:

- Roll the throttle twist grip fully forward.
- Pull the clutch lever.
- Operate the front or rear brake.
- Increase the speed by using the throttle.

Upon deactivation the cruise control light in the tachometer will go out.

### Warning

If, after fitment of this accessory kit, you have any doubt about the performance of any aspect of the motorcycle, contact an authorised Triumph dealer and do not ride the motorcycle until the authorised dealer has declared it fit for use. Riding a motorcycle when there is any doubt as to any aspect of the performance of the motorcycle may result in loss of motorcycle control and an accident.

### Warning

Never ride an accessory equipped motorcycle at speeds above 80 mph (130 km/h).

The presence of accessories will cause changes in the stability and handling of the motorcycle. Failure to allow for changes in motorcycle stability may result in loss of motorcycle control and an accident. Remember that the 80 mph (130 km/h) limit will be reduced by the fitting of non-approved accessories, incorrect loading, worn tyres, overall motorcycle condition and poor road or weather conditions.

### Warning

The motorcycle must not be operated above the legal road speed limit except in closed-course conditions.

### Warning

Only operate this Triumph motorcycle at high speed in closed-course, on-road competition or on closed-course racetracks. High-speed operation should only be attempted by riders who have been instructed in the techniques necessary for high-speed riding and are familiar with the motorcycle's characteristics in all conditions. High-speed operation in any other circumstances is dangerous and may result in loss of motorcycle control and an accident.