



Accessory Fitting Instructions

Heated Grip Kit	
Kit number	Models Affected
A9638172	Tiger XR, Tiger XR _x , Tiger XC, Tiger XC _x , Tiger 800 XR
To be fitted with	
Auxiliary Switch Kit	
Kit number	Models Affected
A9828031	Tiger XR, Tiger XR _x , Tiger XC, Tiger XC _x

Note:

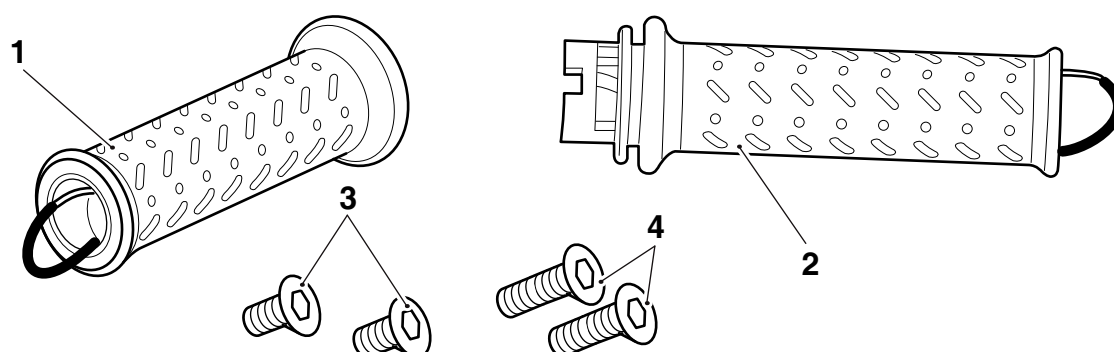
- The heated grip kit A9638172 can only be fitted to the motorcycle models listed when used together with the auxiliary switch kit A9828031.
- If accessory fog lights have previously been fitted to the motorcycle models listed, the auxiliary switch will already be installed.
- For motorcycles with handguards fitted replacement M6 x 40 mm screws for the bar end fixing are required. For motorcycles without handguards fitted the original M6 x 20 mm bar end weight fixings can be reused.
- If the heated grip kit does not contain two M6 x 40 mm screws, they must be obtained from an authorised Triumph accessory dealer.

Thank you for choosing this Triumph genuine accessory kit. This accessory kit is the product of Triumph's use of proven engineering, exhaustive testing, and continuous striving for superior reliability, safety and performance.

Completely read all of these instructions before commencing the installation of the accessory kit in order to become thoroughly familiar with the kit's features and the installation process.

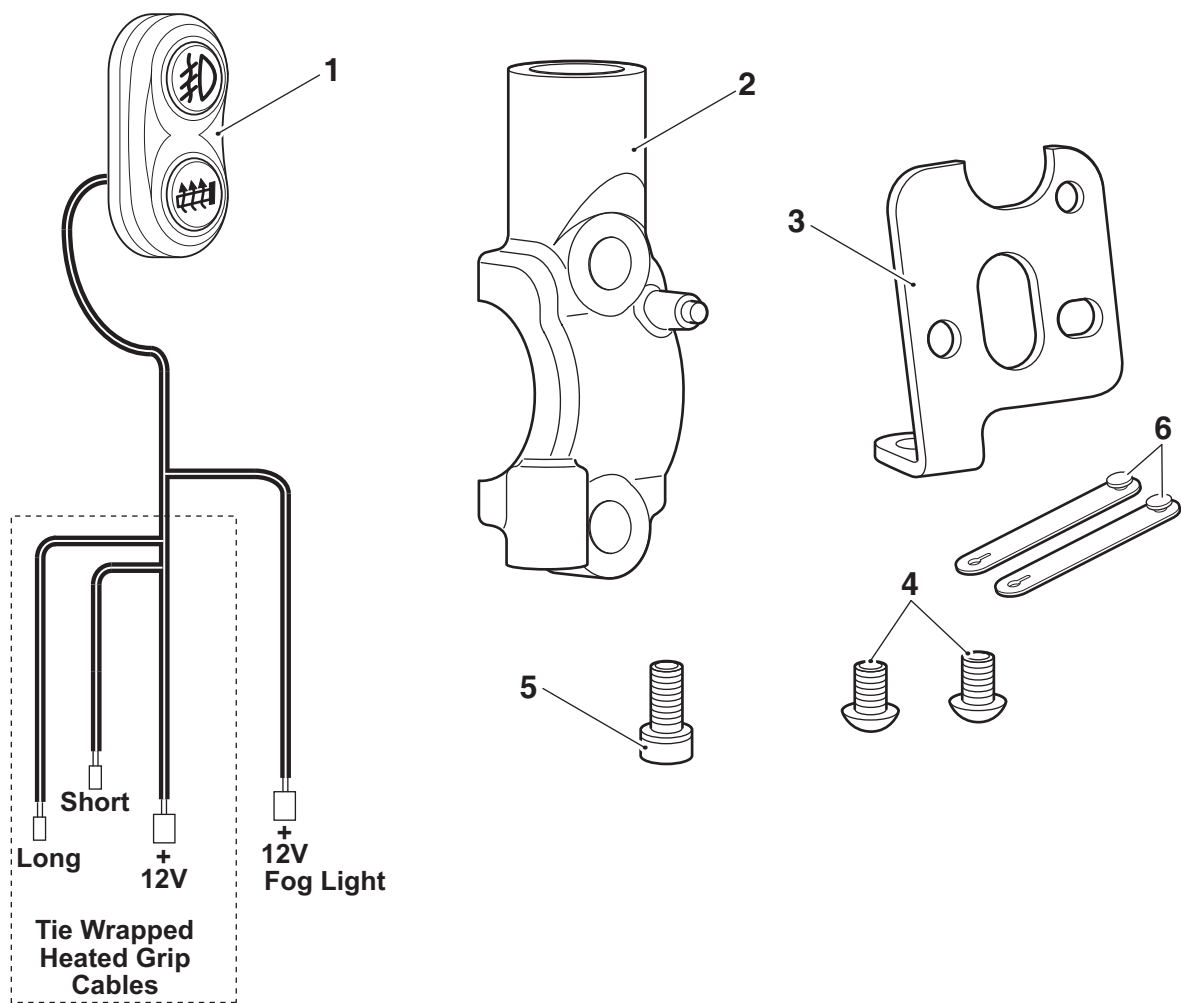
These instructions should be considered a permanent part of your accessory kit, and should remain with it even if your accessory equipped motorcycle is subsequently sold.

Parts supplied: A9638172



1. Heated grip, left hand	1 off	4. Screw, M6 x 40 mm (where supplied)	2 off
2. Heated grip, right hand	1 off		
3. Screw, M6 x 20 mm (where supplied)	2 off		

Parts supplied: A9828031



1.	Auxiliary switch	1 off	4.	Screw, M4 x 5 mm	2 off
2.	Clamp, clutch lever	1 off	5.	Screw, M4 x 8 mm	1 off
3.	Mount plate	1 off	6.	Rubber strap	2 off



Warning

The accessory kits covered in this instruction are designed for use on specific models of Triumph motorcycle. The accessory kits and the models applicable are listed at the start of the instruction. They should not be fitted to any other Triumph model or to any other manufacturer's motorcycle. Fitting an accessory kit to a Triumph model not listed, or to any other manufacturer's motorcycle will affect the performance, stability and handling of the motorcycle. This may result in loss of motorcycle control and an accident.



Warning

Always have Triumph approved parts, accessories and conversions fitted by a trained technician of an authorised Triumph dealer. The fitment of parts, accessories and conversions by a technician who is not of an authorised Triumph dealer may affect the handling, stability or other aspects of the motorcycle's operation which may result in loss of motorcycle control and an accident.



Warning

Always ensure that the newly installed wiring does not chafe against other parts of the motorcycle such that it may be rubbed through and cause an electrical problem. In addition, always ensure that the newly installed wiring will not restrict steering movement. Both conditions are hazardous and could give rise to a dangerous riding condition resulting in a fire, loss of motorcycle control and an accident.



Warning

Throughout this operation, ensure that the motorcycle is stabilised and adequately supported to prevent risk of injury from the motorcycle falling.



Warning

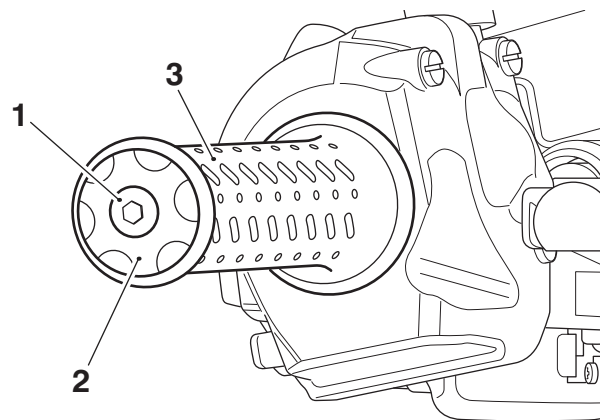
A torque wrench of known accurate calibration must be used when fitting this accessory kit. Failure to tighten any of the fasteners to the correct torque specification may affect motorcycle performance, handling and stability. This may result in loss of motorcycle control and an accident.

Note:

- Triumph offers a broad range of approved genuine accessories for your motorcycle. We cannot therefore cover all possible equipment variations in these instructions. For removal and installation of Triumph Genuine Accessories always refer to the instructions supplied with the respective accessory kit. To obtain additional copies of any Triumph accessory instructions, visit www.triumphinstructions.com or contact your authorised Triumph dealer.

Original Equipment Grip Removal

1. Remove the rider's seat, as described in the Service Manual.
2. Disconnect the battery, negative (black) lead first.
3. Remove the upper and lower radiator panels from both sides of the motorcycle, as described in the Service Manual.
4. Undo and remove the left hand and right hand handlebar end weights and fixings. Retain the bar end weights and fixings for reuse. If handguards are fitted discard the bar end fixings.



1. Fixing
2. Handlebar end weight (right hand shown)
3. Handlebar grip

Right Hand Side

Note:

- To gain access to the switch housing fixings it may be necessary to loosen the front brake master cylinder clamp fixings and rotate the assembly out of the way.

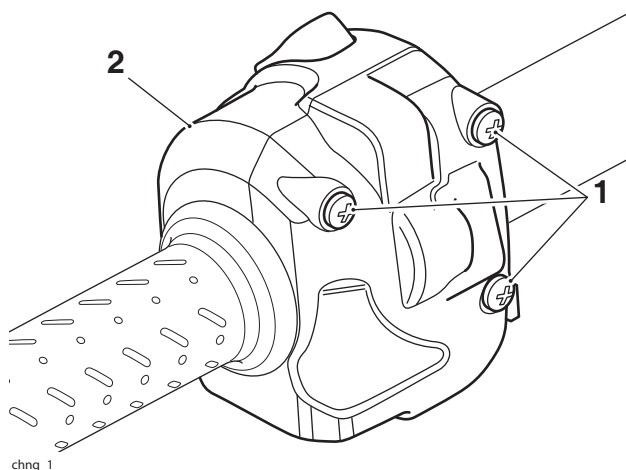


Warning

Do not allow the master cylinder to invert as this will introduce air into the brake system and may also cause brake fluid to leak resulting in damage to bodywork.

A dangerous riding condition, leading to loss of motorcycle control and an accident could result if this warning is ignored.

1. Release the three fixings and free the rear of the right hand switch housing from the handlebar. Without disconnecting any wiring, lay the switch housing aside.

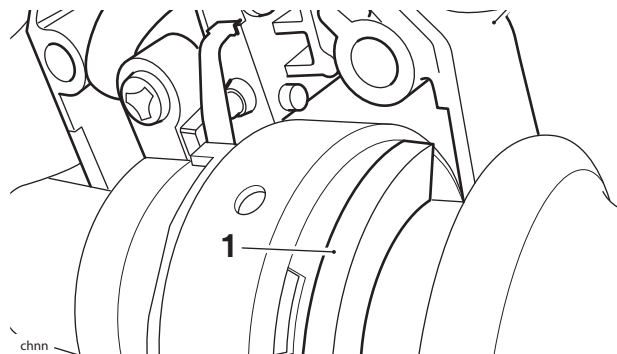


1. Fixings
2. Front of switch housing

Note:

- Note the position and orientation of the twist grip to the switch housing for installation.

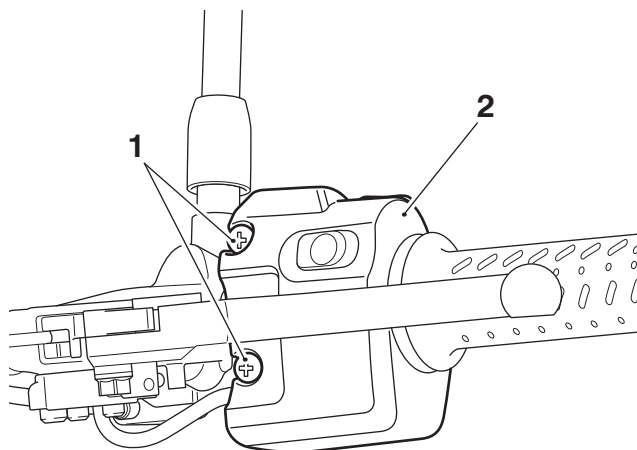
2. Slightly roll the twist grip rearwards until its guide is clear of the switch housing. Slide the twist grip off the handlebar. Retain the twist grip for reuse if the motorcycle is to be returned to its original condition.



1. Guide, twist grip
2. Switch housing

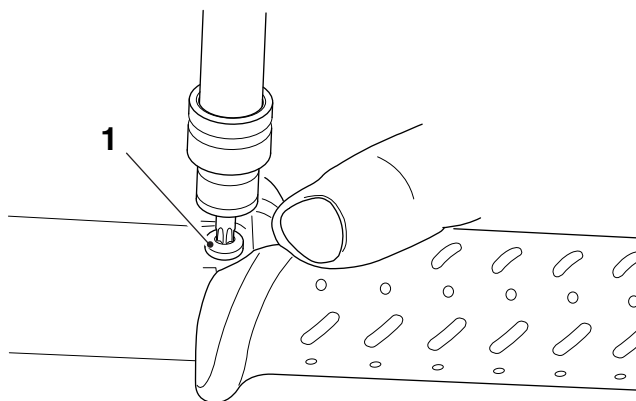
Left Hand Side

1. Remove the two fixings and free the left hand switch housing from the handlebar. Without disconnecting any wiring, lay the switch housing aside.



1. Fixings
2. Rear of switch housing

2. Release the two fixings securing the left hand grip to the handlebar, collect the two washers. Retain the fixings and washers for reuse.



1. Fixing (one of two shown)

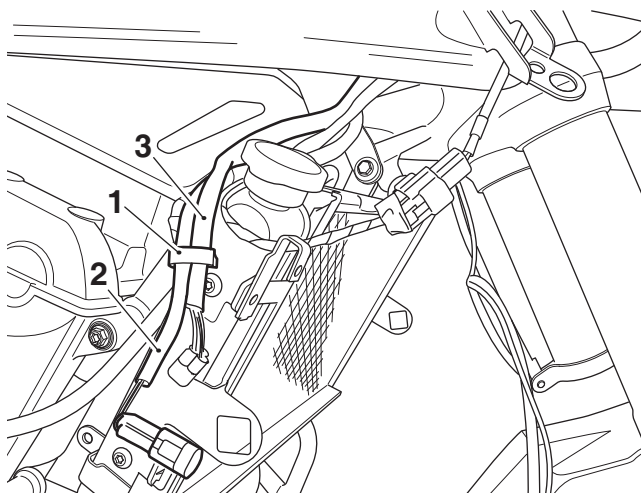
3. Slide the left hand grip off the handlebar.

Heated Grip Installation

Note:

- If accessory fog lights have previously been fitted to the motorcycle the auxiliary switch will need to be removed before fitting the heated grips, continue from Step 1. If accessory fog lights have not been previously fitted, continue from Step 2.

1. Remove the two cable ties securing the fog light switch harness. Release the Omega clip, on the right hand side of the radiator, retaining the fog light auxiliary switch harness and disconnect the fog light auxiliary switch harness from the fog light wiring harness. Remove the auxiliary switch and mounting bracket from the motorcycle.



1. Omega clip
2. Fog light harness
3. Auxiliary switch fog light harness



Warning

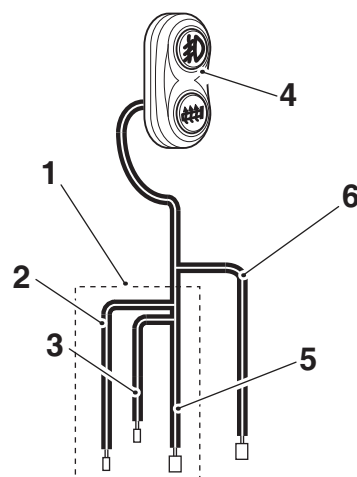
When cutting cable ties, always use the correct tools and personal protection equipment. Failure to use these may result in personal injury.



Caution

When removing the tie wraps from the heated grip cables ensure the outer insulation of any wiring is not cut. If the outer insulation is cut and internal wiring is exposed it may lead to a malfunction, or premature failure of components.

2. Using the existing auxiliary switch, or new auxiliary switch from the auxiliary switch kit, remove the tie wraps and separate the long and short heated grip cables.

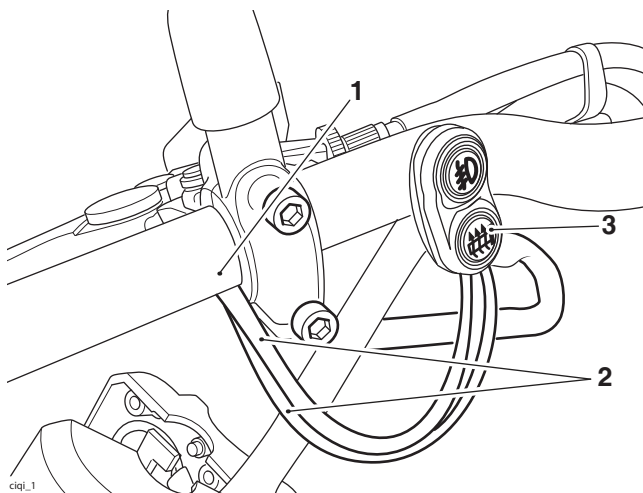


1. Tie wrapped heated grip harness
2. Long heated grip cable
3. Short heated grip cable
4. Auxiliary switch
5. Heated grip switch harness
6. Fog light switch harness

3. Remove the blanking plugs from the long and short heated grip cable connectors.

Note:

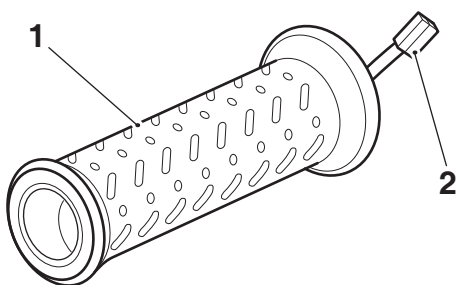
- The longer heated grip cable is routed to the right hand (throttle) side of the handlebar.
 - The shorter heated grip cable is routed to the left hand (clutch) side of the handlebar.
4. Thread the heated grip cables into the large hole in the underside of the left hand side of the handlebar as shown below, and out through the holes in the left hand and right hand side end weight mountings.



1. Handlebar
2. Heated grip cable
3. Auxiliary switch

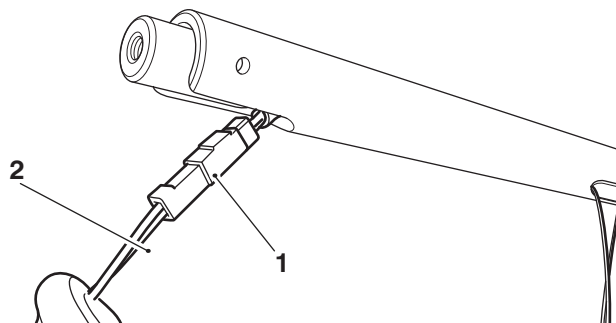
Left Hand Side

5. Ensure the heated grip connector is positioned out of the grip, as shown below.



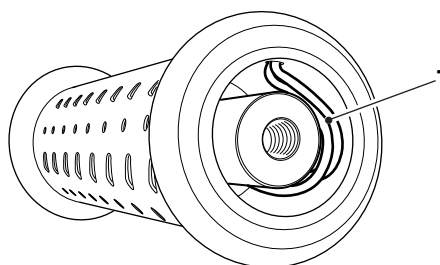
1. Heat grip, left hand
2. Heated grip connector

6. Connect the electrical connector of the shorter cable to the left hand heated grip electrical connector.



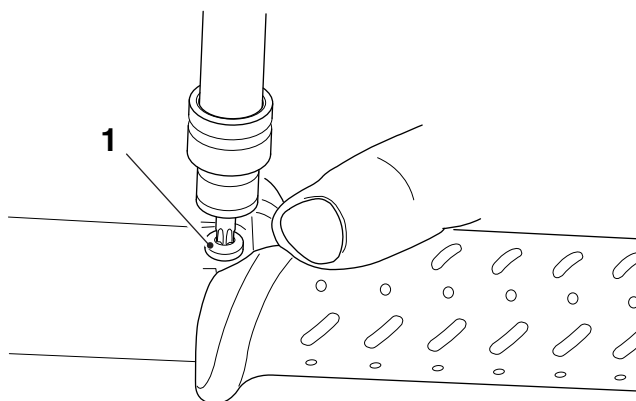
1. Electrical connector
2. Heated twist grip

7. Carefully fit the left hand heated grip with the cables facing upwards while pulling the harness out of the handlebar, as shown below.



1. Harness position

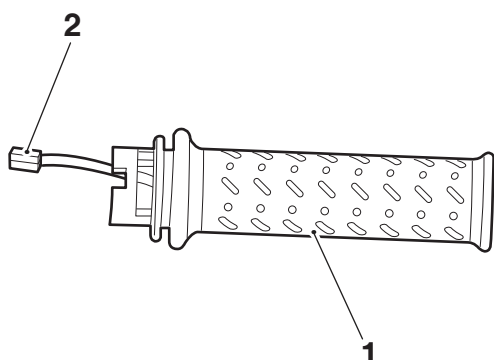
8. Secure with the fixings and washers removed previously. Tighten the fixings to **3 Nm**.



1. Fixing (one of two shown)

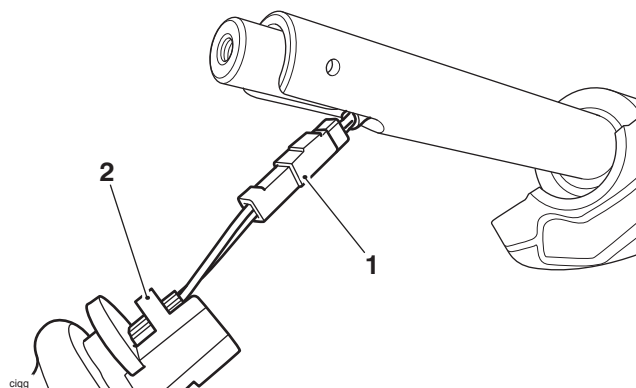
Right Hand Side

9. Ensure the heated grip connector is positioned out of the grip, as shown below.



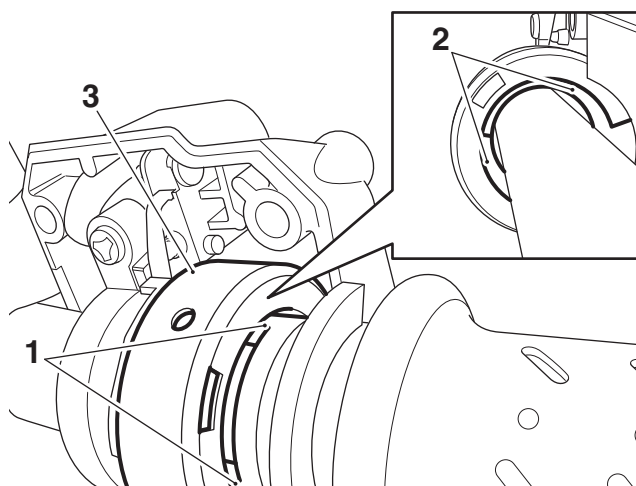
1. Heated grip, right hand
2. Heated grip connector

10. Connect the electrical connector of the longer cable to the right hand heated grip (twist grip) electrical connector.



1. Electrical connector
2. Heated twist grip

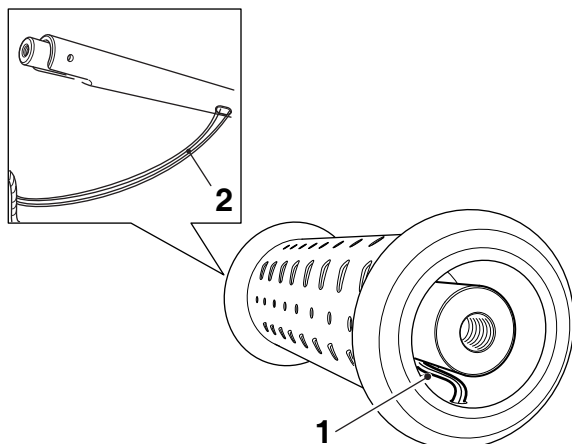
11. Partially engage the locating lugs on the heated grip into their slots in the spring housing.



1. Locating lugs
2. Slots
3. Spring housing

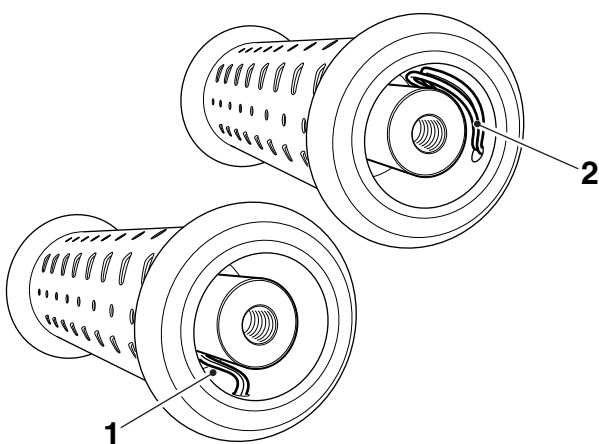
12. To fully engage the heated grip, rotate it rearwards and gently push fully in.

13. Carefully pull the cable back through the hole in the underside of the handlebar until the loop of the cables is just inside the end of the right hand grip, as shown below.



1. Cable position (throttle off)
2. Right hand cable

14. Ensure there is enough slack in the cables for the twist grip to rotate and the cables not to become trapped.



1. Cable position (throttle off)
2. Cable position (throttle on)



Warning

Check the operation of the right hand heated grip (twist grip). Ensure that the rearward and forward movement of the grip is smooth, without tightness and will return to the throttle closed position when released.

A tight or stuck twist grip can lead to loss of motorcycle control and an accident.

15. Carefully check that the twist grip rotates smoothly through its full range of movement, and is not restricted in any way. If any tightness or resistance is felt, check and rectify the cause before riding the motorcycle.
16. Fit the rear of the switch housing and tighten its fixings to **2.5 Nm**.
17. Ensure the throttle is fully closed, and the electrical cable inside the twist grip has adequate slack to allow correct throttle operation.

Note:

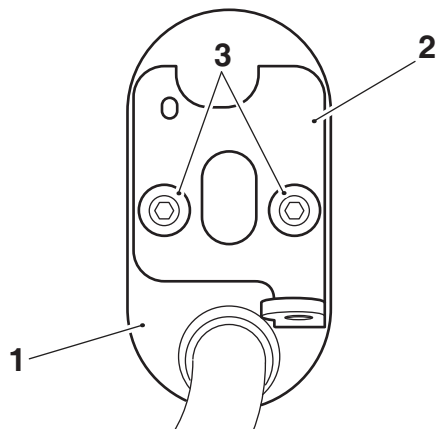
- For motorcycles with handguards fitted. If the heated grip kit does not contain two M6 x 40 mm screws, they must be obtained from an authorised Triumph accessory dealer.
18. Refit the right hand handlebar end weight with the original screw, or if provided in the kit a new M6 x 20 mm screw. If handguards are fitted a new M6 x 40 mm screw must be fitted. Tighten the screw to **5 Nm**.
19. Refit the left hand switch housing. Tighten the fixings to **2.5 Nm**.
20. Refit the left hand handlebar end weight with the original screw, or if provided in the kit a new M6 x 20 mm screw. If handguards are fitted a new M6 x 40 mm screw must be fitted. Tighten the screw to **5 Nm**.
21. Align the split line of the brake lever with the alignment mark on the upper surface of the handlebar, then tighten the clamp fixings, upper first, to **12 Nm**.

Note:

- If accessory fog lights are not fitted to the motorcycle, continue from step 1, Auxiliary Switch Fitment.
- If accessory fog lights are fitted to the motorcycle, continue from step 7, Auxiliary Switch Fitment.

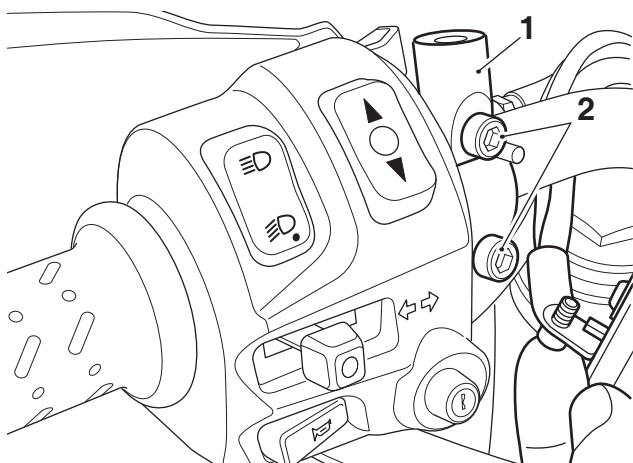
Auxiliary Switch Fitment

1. Align the auxiliary switch on the switch mount plate, as shown and secure with the two M4 x 5 mm screws. Tighten the screws to **3 Nm**.



1. Auxiliary switch
2. Switch mount plate
3. M4 x 5 mm screws

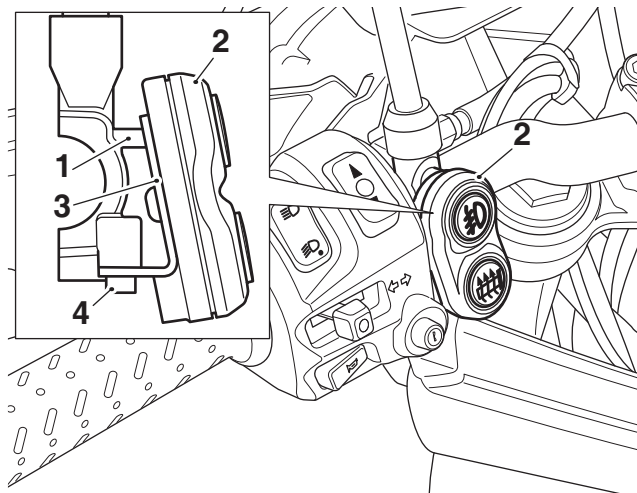
2. Slide the rubber boot up the left hand mirror stem to expose the mirror stem lock nut. Release the lock nut and remove the left hand mirror assembly. Retain the mirror assembly for reuse.
3. Support the clutch lever assembly and remove the two bolts. Retain the clamp if the motorcycle is to be returned to its original condition. Retain the two bolts for reuse.
4. Fit the clutch lever clamp provided in the kit, in the orientation shown. Secure with the original fixings. Do not fully tighten the fixings at this stage.



1. Clutch lever clamp
2. Fixings

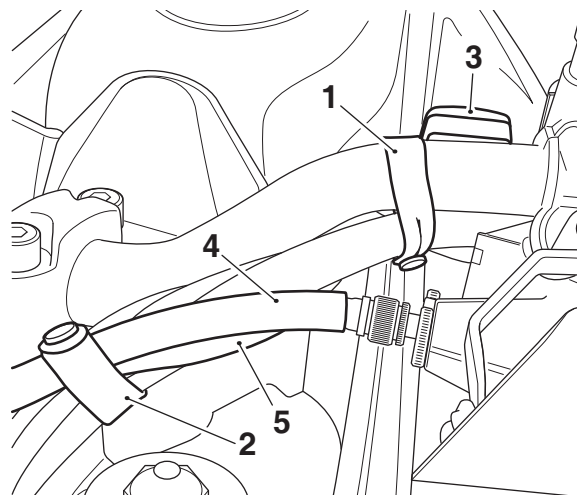
5. Align the split line of the clutch lever with the alignment mark on the upper surface of the handlebar, then tighten the clamp bolts, upper first, to **12 Nm**.

6. Refit the left hand mirror assembly. Tighten the lock nut to **25 Nm** and slide the rubber boot down the mirror stem to cover the fixing.
7. Position the auxiliary switch and mount plate on the clutch lever clamp. Ensure the peg on the clutch lever clamp locates in the auxiliary switch mount plate, as shown. Secure the auxiliary switch mount plate to the underside of the clutch lever clamp with the M4 x 8 mm screw from the kit. Tighten the screw to **3 Nm**.



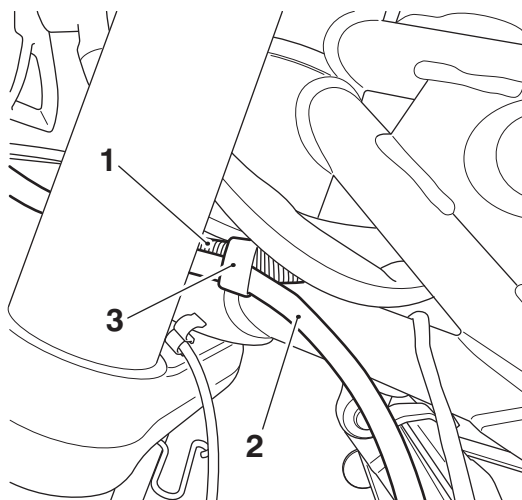
1. Peg, clutch lever clamp
2. Auxiliary switch
3. Auxiliary switch mount plate
4. Screw, M4 x 8 mm

8. Following the route of the left hand switch harness, secure the auxiliary switch harness as shown below.



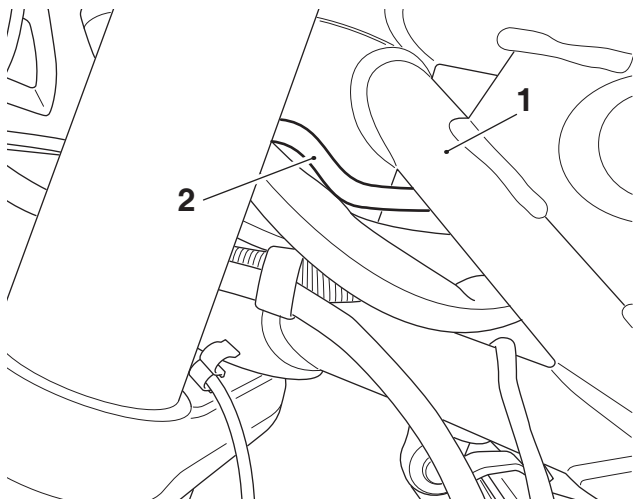
1. Rubber strap, auxiliary switch cube kit
2. Rubber strap, original
3. Auxiliary switch
4. Clutch cable
5. Auxiliary switch harness

9. Collect a rubber strap from the auxiliary switch kit and secure the heated grip switch harness to the main harness as shown below.



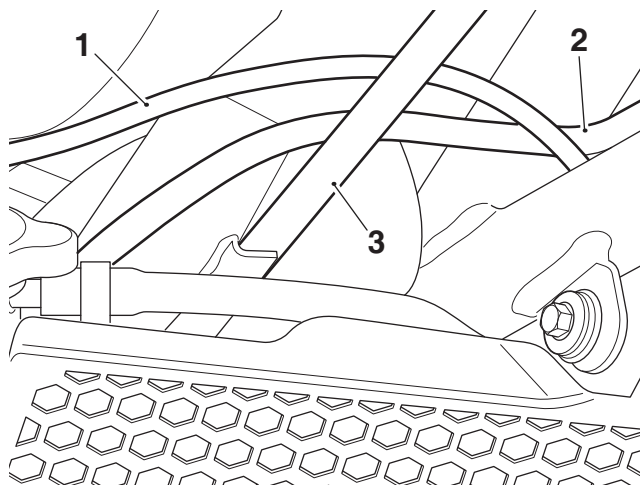
1. Main harness
2. Heated grip switch harness
3. Rubber strap

10. Pass the fog light switch harness through the frame, behind the right hand side of the headstock as shown.



1. Motorcycle frame
2. Fog light switch harness

11. Route the fog light switch harness towards the right hand side of the radiator ensuring it is below the brake hose and above the clutch cable, as shown.



1. Fog light switch harness
2. Brake hose
3. Clutch cable.



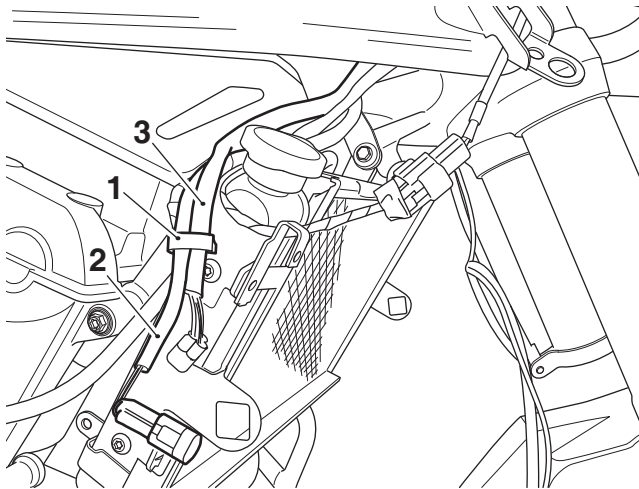
Caution

Blanking plugs are fitted to the harness connectors to prevent water ingress. If the blanking plugs are removed for any reason, they should always be refitted. The harness connectors should never be left exposed without the blanking plugs fitted as this may lead to a malfunction, or premature failure of components.

Note:

- If accessory fog lights are not fitted to the motorcycle, follow step 12 and then continue from step 16.
- If accessory fog lights are fitted to the motorcycle, continue from step 13.

12. Locate and release the Omega clip on the right hand side of the radiator. Secure the fog light section of the auxiliary switch harness using the Omega clip, do not remove the blanking plug.

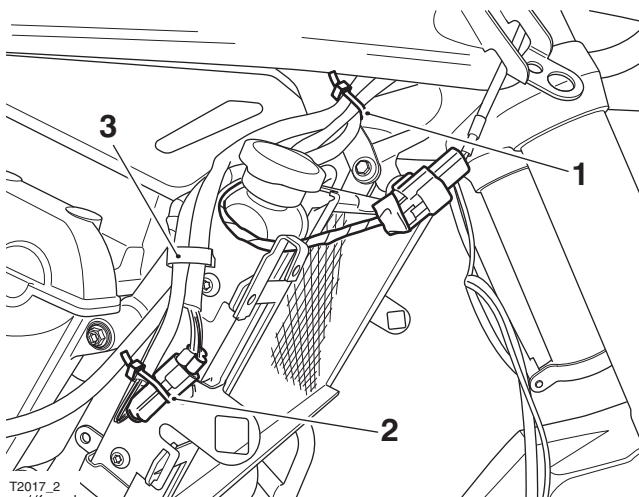


1. Omega clip
2. Fog light harness
3. Auxiliary switch harness

13. Connect the fog light auxiliary switch harness connector to the main wiring harness connector.

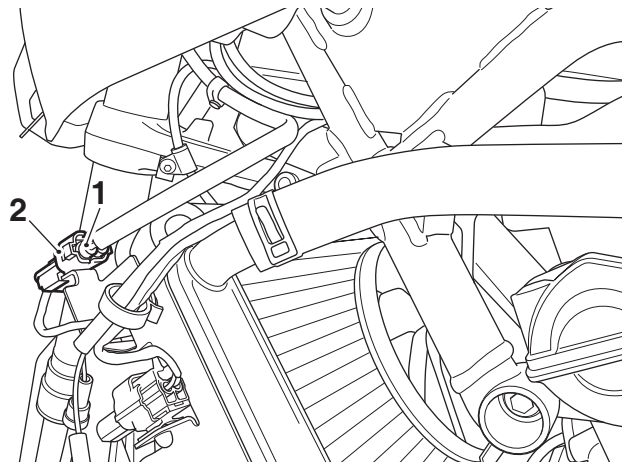
Note:

- Cable ties are not provided in the kit. Suitable cable ties must be purchased to secure the fog light harness.
14. Secure the fog light switch harness and the main harness using the Omega clip removed previously and then cable tie the harness to the connector as shown below.



1. Cable tie (fog light switch harness)
2. Cable tie (fog light switch connectors)
3. Omega clip

15. Identify the heated grip connector on the main wiring harness (located on the left hand radiator bracket) and remove the blanking plug. Retain the blanking plug if the motorcycle is to be returned to its original condition.
16. Remove the blanking plug from the heated grip switch harness connector and connect the switch harness connector to the main wiring harness connector. Retain the blanking plug if the motorcycle is to be returned to its original condition.



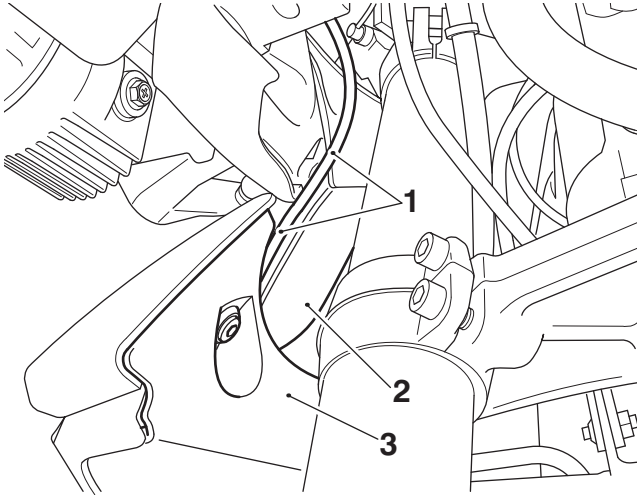
1. Heated grip harness connector
2. Main harness connector



Warning

Move the handlebars to the left and right full lock while checking that the cables and harness do not bind. A cable or harness that binds will restrict the steering and may result in loss of motorcycle control and an accident.

17. Refit the lower and upper radiator panels as described in the Service Manual. If accessory fog lights are fitted, take care to route the fog light harnesses as shown below.



1. Fog light harness route (right hand shown)
 2. Radiator panel upper
 3. Radiator panel lower
18. Reconnect the battery, as described in the Service Manual.
19. Refit the rider's seat, as described in the Service Manual.

Heated Grip System Testing

Note:

- During the initial engine start up phase the engine control module will run a self check of the heated grip circuit. During this time the switch will glow red and amber and then return to the OFF position.



Warning

Never start the engine or let it run for any length of time in a closed area. The exhaust fumes are poisonous and may cause loss of consciousness and death within a short time. Always operate the motorcycle in the open-air or in an area with adequate ventilation.

Note:

- The heated grips will only heat when the engine is running.
1. Run the engine.
 2. Operate the switch at both positions and check that the heated grips warm up.
 3. Fuse number 4 of the front fuse box protects the heated grip circuit. Refer to the label in the fuse box lid for fuse amperage.

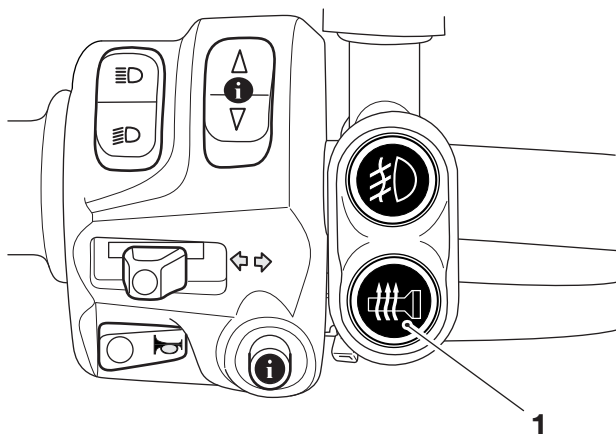
Operation

The heated grips will only heat when the engine is running.

The system is designed to offer a variable level of heat at the grips from warm to hot.

The outer ring of the switch will illuminate as follows for each heat setting:

- OFF - not illuminated
- HOT - red
- WARM - amber.



1. Heated grip switch

For maximum benefit in cold conditions, from the OFF position press the switch once for hot (red) initially and then reduce the heat level by pressing the switch again for warm (amber) when the grips have warmed up.

To turn off the heated grips, press and release the switch until it is not illuminated.

Low Power Voltage Cut Off

When the detected voltage is lower than 11.8 Volts continually for more than five minutes the LED in the heated grip switch will flash five times. After the fifth flash the main switch will power off the heated grips and the LED indicator.

The main switch will not power back on automatically even if the voltage rises to the safe level.

The user must manually press the switch again to activate the heated grips.

If the detected voltage is still lower than 11.8 Volts, the LED for the switch will flash five times again and cut off the power automatically.



Warning

If, after fitment of this accessory kit, you have any doubt about the performance of any aspect of the motorcycle, contact an authorised Triumph dealer and do not ride the motorcycle until the authorised dealer has declared it fit for use. Riding a motorcycle when there is any doubt as to any aspect of the performance of the motorcycle may result in loss of motorcycle control and an accident.



Warning

Never ride an accessory equipped motorcycle at speeds above 80 mph (130 km/h).

The presence of accessories will cause changes in the stability and handling of the motorcycle. Failure to allow for changes in motorcycle stability may result in loss of motorcycle control and an accident.

Remember that the 80 mph (130 km/h) limit will be reduced by the fitting of non-approved accessories, incorrect loading, worn tyres, overall motorcycle condition and poor road or weather conditions.



Warning

The motorcycle must not be operated above the legal road speed limit except in closed-course conditions.



Warning

Only operate this Triumph motorcycle at high speed in closed-course, on-road competition or on closed-course racetracks. High-speed operation should only be attempted by riders who have been instructed in the techniques necessary for high-speed riding and are familiar with the motorcycle's characteristics in all conditions.

High-speed operation in any other circumstances is dangerous and may result in loss of motorcycle control and an accident.