



## Accessory Fitting Instructions

Peep Mirror Kit, Black	
Kit number	Models Affected
A9638136	Street Twin up to VIN 914972, Street Cup, Street Scrambler up to VIN 910740, Bonneville T100 from VIN 759204, Bonneville T120, Bonneville Bobber, Bonneville Bobber - Black, Bonneville Speedmaster from VIN 739143, Thruxton 1200, Thruxton 1200 R, Speed Triple S from VIN 735438, Speed Triple R from VIN 735337, Speed Triple RS, Street Triple S, Street Triple S 660cc, Street Triple R from VIN 793032, Street Triple R LRH (Low Ride Height), Street Triple RS
Peep Mirror Kit, Clear	
Kit number	Models Affected
A9638137	Street Twin up to VIN 914972, Street Cup, Street Scrambler up to VIN 910740, Bonneville T100 from VIN 759204, Bonneville T120, Bonneville Bobber, Bonneville Bobber - Black, Bonneville Speedmaster from VIN 739143, Thruxton 1200, Thruxton 1200 R, Speed Triple S from VIN 735438, Speed Triple R from VIN 735337, Speed Triple RS, Street Triple S, Street Triple S 660cc, Street Triple R from VIN 793032, Street Triple R LRH (Low Ride Height), Street Triple RS

**Note:**

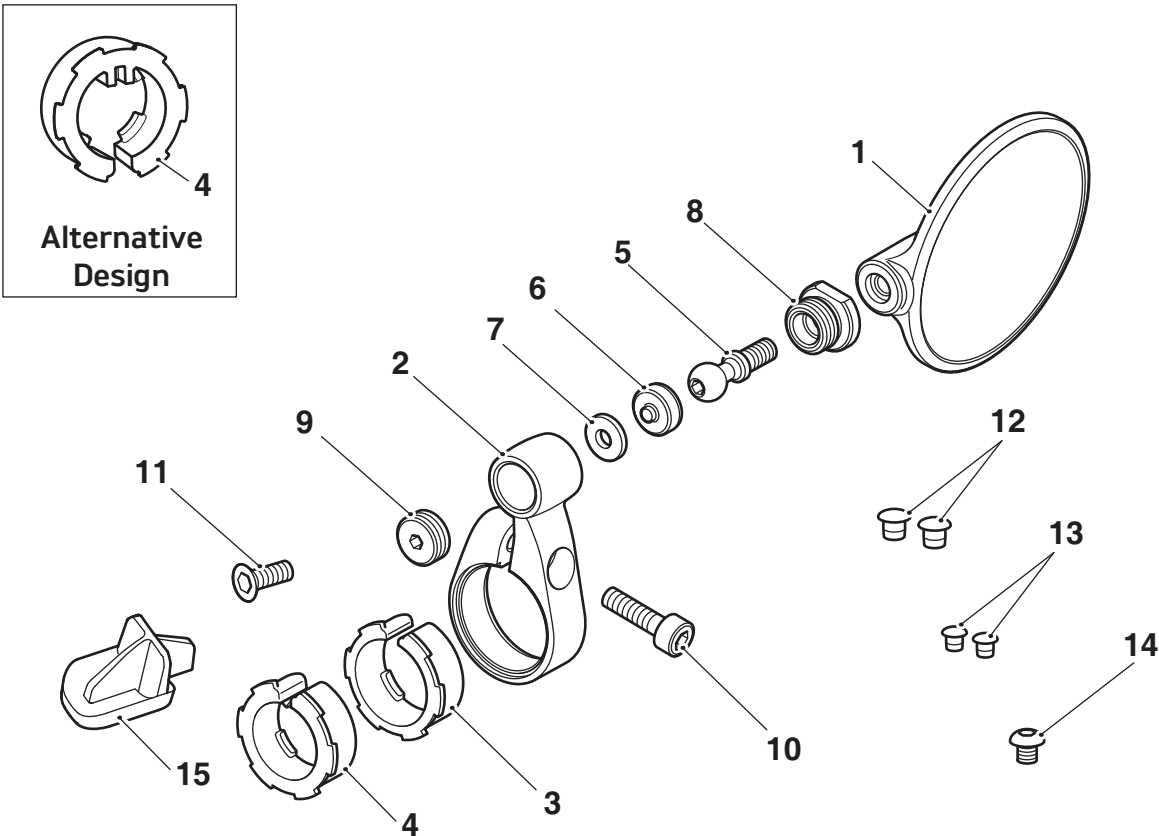
- **When fitting the above mirror kits to Bonneville Speedmaster models from VIN 739143, they are only to be fitted with Accessory High Handlebar kits A9630258, A9630391, or Accessory Alternative Handlebar kit A9630654.**

Thank you for choosing this Triumph genuine accessory kit. This accessory kit is the product of Triumph's use of proven engineering, exhaustive testing, and continuous striving for superior reliability, safety and performance.

Completely read all of these instructions before commencing the installation of the accessory kit in order to become thoroughly familiar with the kit's features and the installation process.

These instructions should be considered a permanent part of your accessory kit, and should remain with it even if your accessory equipped motorcycle is subsequently sold.

Parts supplied: A9638136, A9638137



1. Mirror	1 off	9. Grub screw, M14	1 off
2. Mirror stem	1 off	10. Fixing, M6 x 20 mm (cap head)	1 off
3. Friction ring, 25.4 mm diameter	1 off	11. Fixing, M6 x 20 mm (countersunk)	1 off
4. Friction ring, 22.2 mm diameter	1 off	12. Plastic plug, M10	2 off
5. Ball end fixing	1 off	13. Plastic plug, M8	2 off
6. Cup	1 off	14. Fixing, M10 x 12 mm (Street Twin only)	1 off
7. Belleville washer	1 off	15. Handlebar plug (if supplied)	1 off
8. Sleeve	1 off	16. Grease (not shown)	1 off



## Warning

The accessory kits covered in this instruction are designed for use on specific models of Triumph motorcycle. The accessory kits and the models applicable are listed at the start of the instruction. They should not be fitted to any other Triumph model or to any other manufacturer's motorcycle. Fitting an accessory kit to a Triumph model not listed, or to any other manufacturer's motorcycle will affect the performance, stability and handling of the motorcycle. This may affect the rider's ability to control the motorcycle and may result in loss of motorcycle control and an accident.



## Warning

Always have Triumph approved parts, accessories and conversions fitted by a trained technician of an authorised Triumph dealer. The fitment of parts, accessories and conversions by a technician who is not of an authorised Triumph dealer may affect the handling, stability or other aspects of the motorcycle's operation which may result in loss of motorcycle control and an accident.



## Warning

Throughout this operation, ensure that the motorcycle is stabilised and adequately supported to prevent risk of injury from the motorcycle falling.



## Warning

A torque wrench of known accurate calibration must be used when fitting this accessory kit. Failure to tighten any of the fasteners to the correct torque specification may affect motorcycle performance, handling and stability. This may result in loss of motorcycle control and an accident.

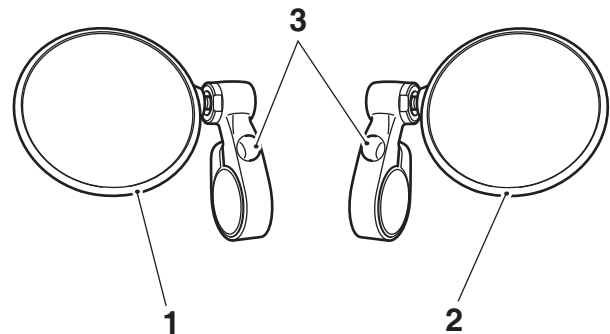
### Note:

- Triumph offers a broad range of approved genuine accessories for your motorcycle. We cannot therefore cover all possible equipment variations in these instructions. For removal and installation of Triumph Genuine Accessories, always refer to the instructions supplied with the respective accessory kit. To obtain additional copies of any Triumph accessory instructions, visit [www.triumphinstructions.com](http://www.triumphinstructions.com) or contact your authorised Triumph dealer.

## Mirror Assembly

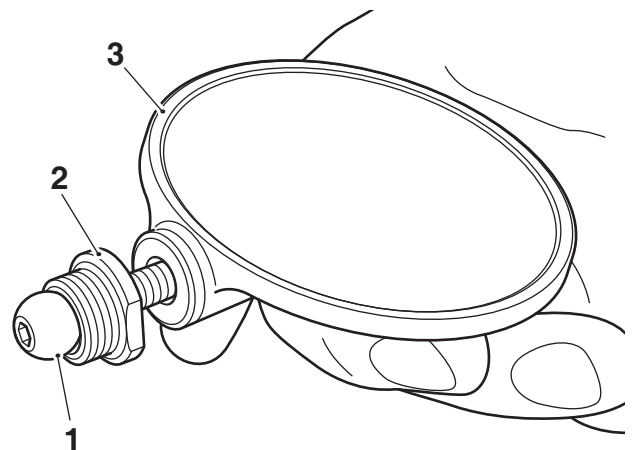
### Note:

- The mirror can be assembled to fit to either the left hand or right hand side of the handlebar. When assembled the fixing recess in the mirror stem should always face the rider, as shown below.



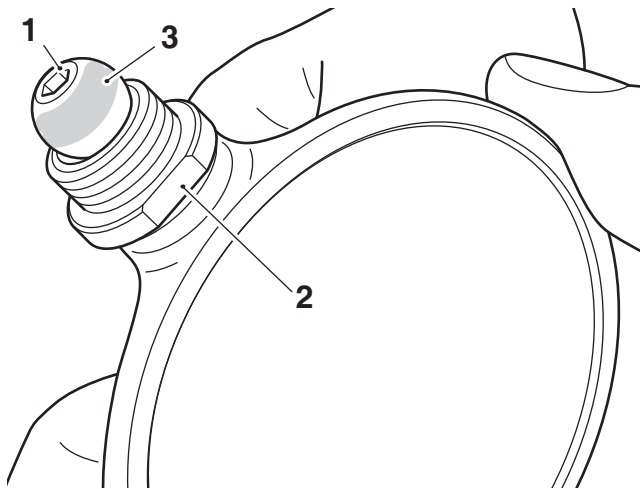
1. Mirror assembly, left hand
2. Mirror assembly, right hand
3. Recess, fixing

1. Fit the ball end fixing through the sleeve, in the orientation shown below and screw the ball end fixing into the mirror. Tighten the fixing to **8 Nm**.



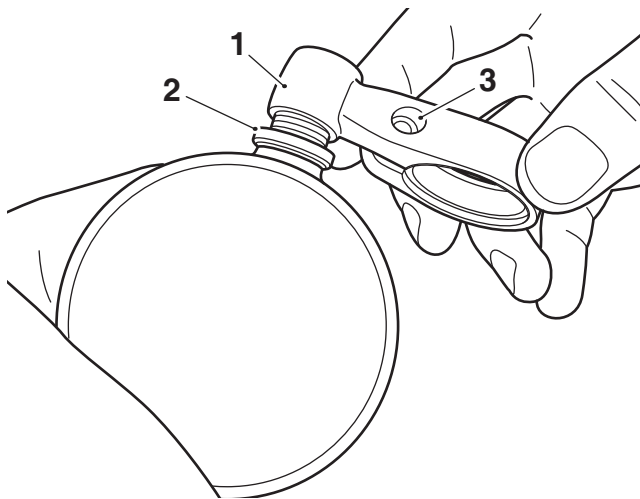
1. Ball end fixing
2. Sleeve
3. Mirror

2. Apply a generous smear of grease from the kit evenly to the head of the ball end fixing. Ensure grease is not applied to the threads of the sleeve.



1. Head, ball end fixing
2. Sleeve
3. Grease

3. Loosely fit the sleeve into the mirror stem ensuring the stem fixing recess is positioned towards the rider, as shown below.



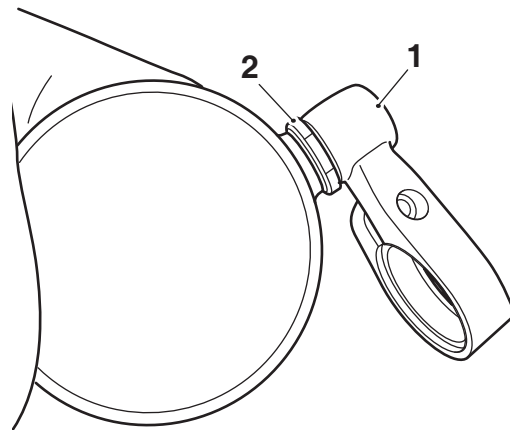
1. Mirror stem
2. Sleeve
3. Fixing recess



### Caution

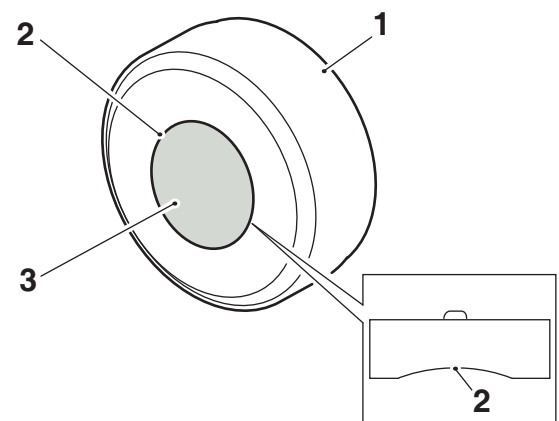
Do not use excessive force when tightening the sleeve against the mirror stem. If excessive force is used it may result in damage to the head of the sleeve.

4. Using an appropriate tool, tighten the sleeve to **8 Nm**.



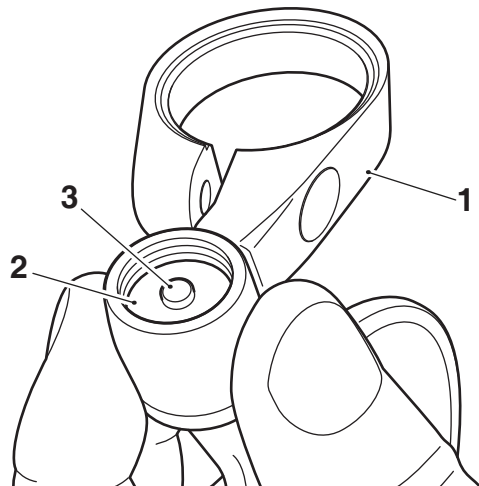
1. Mirror stem
2. Sleeve

5. Apply a generous smear of grease from the kit evenly to the recess in the cup.



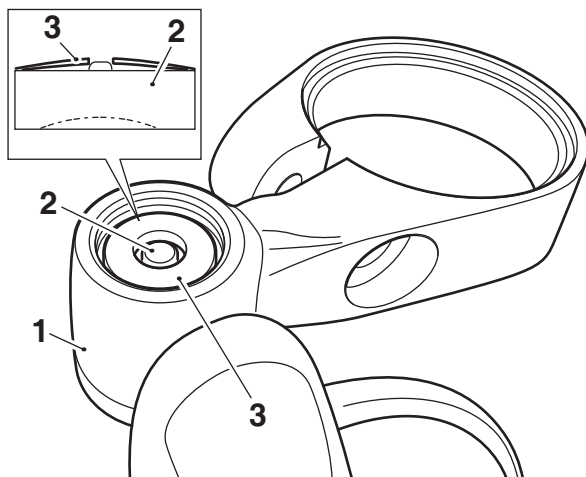
1. Cup
2. Recess
3. Grease

- 
6. Fit the cup into the mirror stem in the orientation shown below with the dimple on the cup positioned at the top.



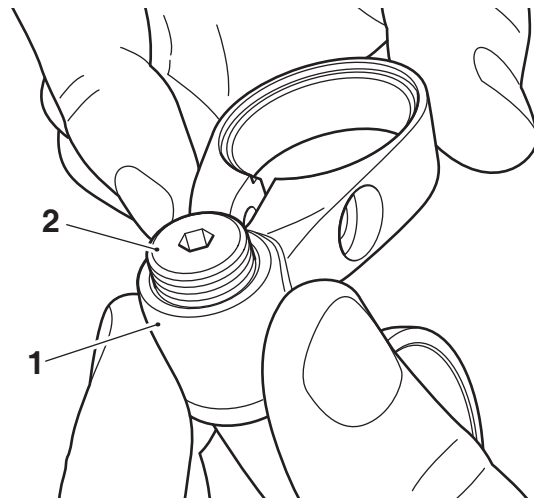
1. Mirror stem  
2. Cup  
3. Dimple

7. Fit the Belleville washer onto the cup in the orientation shown below.



1. Mirror stem  
2. Cup  
3. Belleville washer

8. Fit the M14 grub screw into the mirror stem, as shown. Do not fully tighten the grub screw at this stage.



1. Mirror stem  
2. Grub screw, M14

9. While holding the mirror stem articulate the mirror to ensure the grease on the ball end pin is evenly distributed.  
10. Tighten the M14 grub screw to **4 Nm**.

## Removal of Standard Mirrors

### Note:

- The method of fitting the peep mirror kit is different for motorcycles fitted with stem style mirrors as standard fitment, to those fitted with bar end mirrors as standard fitment. Follow the appropriate instructions below.

### Motorcycles with Stem Mirrors

Street Twin up to VIN 914972 and  
Street Scrambler up to VIN 910740 Models Only

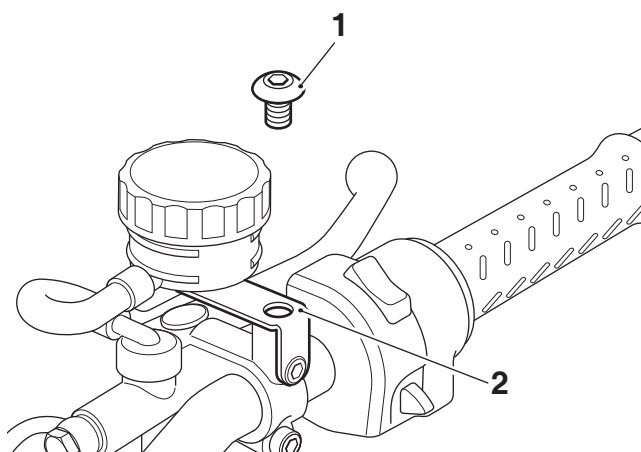


### Caution

To prevent any body damage, do not spill brake fluid onto any area of bodywork.

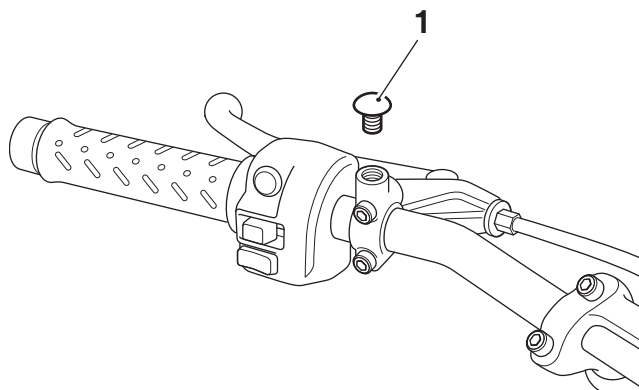
### Note:

- When the right hand mirror is removed the brake fluid reservoir and its mounting bracket will become detached. Taking care not to invert the reservoir, hold the assembly in its original position while fitting the M10 fixing.
- Remove the original mirrors from the motorcycle, as described in the Service Manual. Retain the mirrors and fixings for reuse if the motorcycle is to be returned to its original condition.
  - Ensure the brake fluid reservoir is correctly positioned. Fit the M10 x 12 mm fixing provided, through the brake fluid reservoir mounting bracket, into the right hand original mirror mounting point. Tighten to **25 Nm**.



- Fixing, M10 x 12 mm
- Brake fluid reservoir mounting bracket

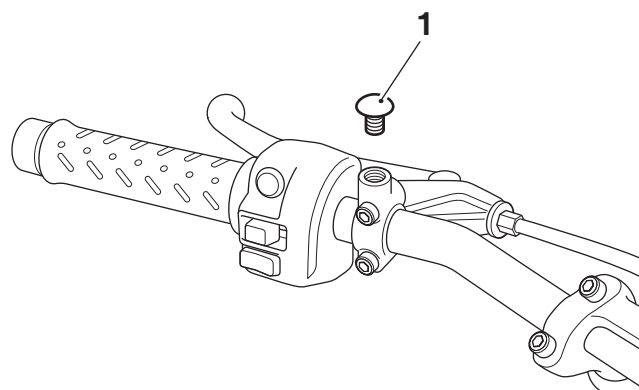
- Fit an M10 plastic plug provided into the original left hand mirror mounting point threaded hole.



- Plastic plug, M10

### Bonneville T100, Bonneville T120, Bonneville Speedmaster from VIN 739143 Models Only

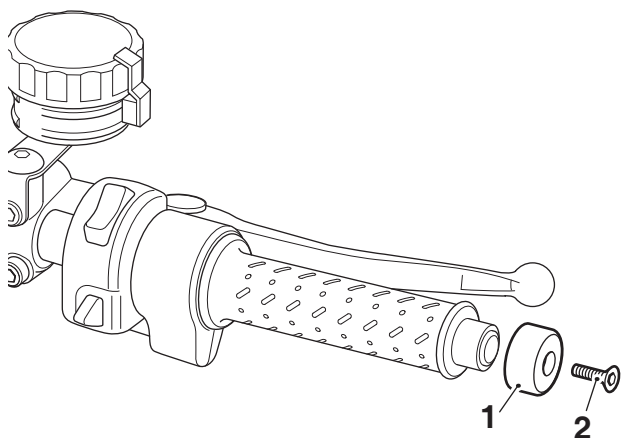
- Remove the original mirrors from the motorcycle, as described in the Service Manual. Retain the mirrors and fixings for reuse if the motorcycle is to be returned to its original condition.
- Fit the M8 plastic plugs, if provided in the kit, into the original mirror mounting point holes.



- Plastic plug, M8 (left hand shown)

## All Models

- For the chosen side, remove the bar end finisher. Retain the finisher if the motorcycle is to be returned to its original condition. Discard the fixing.



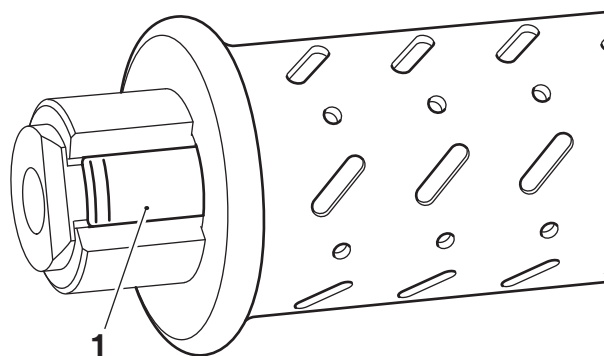
- Bar end finisher
- Fixing

## Motorcycles with Bar End Mirrors

- Remove the bar end finishers from the handlebar, as described in the Service Manual. Retain the bar end finishers for reuse, discard the finisher fixings.
- Remove the original bar end mirrors from the motorcycle as described in the Service Manual. Retain the mirrors if the motorcycle is to be returned to its original condition.

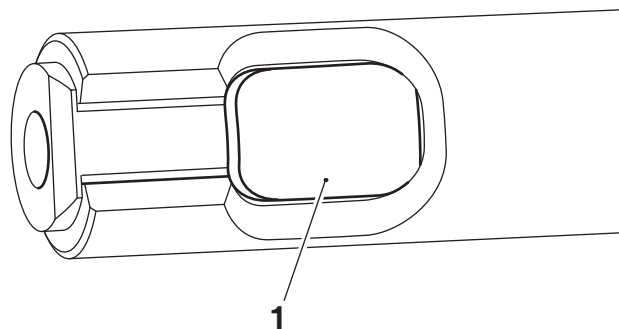
## Note:

- For motorcycles fitted with 22.2 mm handlebars only. The accessory kit may include a handlebar plug. If the accessory kit includes a handlebar plug, replace the left hand original handlebar plug, if fitted, following steps 3 to 6. If the accessory kit does not include a handlebar plug, or the original handlebar plug is not fitted, continue from Peep Mirror Installation. The original handlebar plug can be identified by the extended section of the handlebar plug visible past the handlebar grip, as shown below.



## 1. Handlebar plug

- If a handlebar plug has been identified, remove the left hand side handlebar grip, as described in the Service Manual. Retain the handlebar grip for reuse.
- Remove the original handlebar plug from the handlebars. Retain the handlebar plug for reuse if the motorcycle is to be returned to its original condition.
- Fit the accessory handlebar plug from the kit, as shown.



## 1. Handlebar plug

- Refit the handlebar grip, as described in the Service Manual.

## Peep Mirror Installation

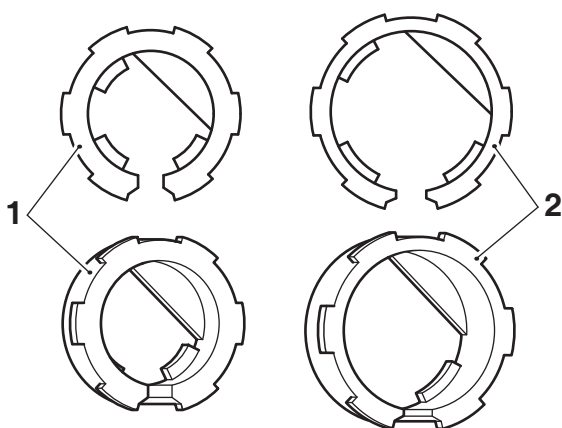


### Warning

When friction rings are fitted to the handlebar ensure they are a tight fit. Friction rings which are loose on the handlebar will prevent secure fitting of a peep mirror.

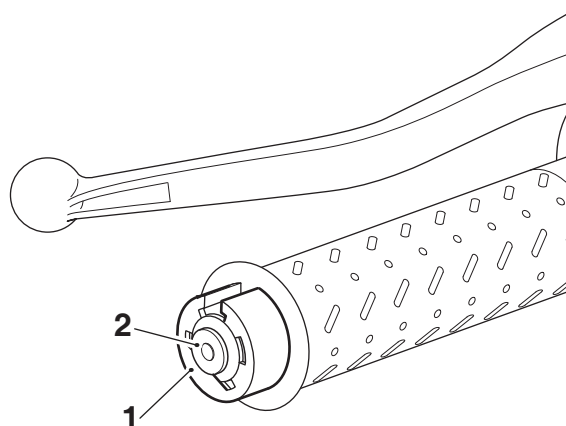
#### Note:

- There are alternative size friction rings provided in the kit.  
For Street Twin up to VIN 914972, Street Cup, Street Scrambler up to VIN 910740, Thruxton 1200 R and Speed Triple models use the 22.2 mm diameter friction ring. For Bonneville T100, Bonneville T120, Bonneville Bobber, Bonneville Bobber - Black, Bonneville Speedmaster from VIN 739143 and Thruxton 1200 models use the 25.4 mm diameter friction ring.



- Friction ring, 22.2 mm diameter
- Friction ring, 25.4 mm diameter

- If bar end mirrors have been removed, replace the friction ring with the correct size friction ring from the kit. If stem mirrors have been removed fit the correct size friction ring from the kit.



- Friction ring
- Handlebar



### Warning

When fitting the mirror assembly onto the handlebar friction ring, ensure there is sufficient clearance between the mirror and throttle grip. Failure to allow clearance could restrict the free movement of the throttle grip and prevent correct throttle operation. Riding a motorcycle when there is any doubt as to any aspect of the performance of the throttle operation may result in loss of motorcycle control and an accident.



### Warning

Move the handlebars to left and right full lock while checking that cables and harnesses do not bind. Cables or harnesses that bind will restrict the steering and may result in loss of motorcycle control and an accident.



### Warning

If the mirror fixing is too loose the mirror may blow back at speed. This will result in a loss of vision to the rear of the motorcycle. It's dangerous to ride a motorcycle without sufficient rearward vision.

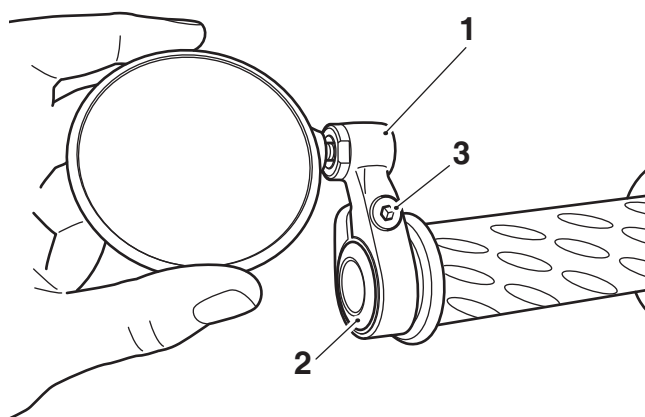




## Warning

When fitting peep mirrors always ensure the mirror is position above the handlebars. If the peep mirror is positioned below the handlebars it may restrict the steering which may result in loss of motorcycle control and an accident.

8. Fit the peep mirror over the friction ring on the handlebar at the chosen side of the motorcycle. Adjust the mirror assembly to provide clear rear visibility in the normal riding position. Fit the M6 x 20 mm cap head fixing from the kit and tighten to **3 Nm**.

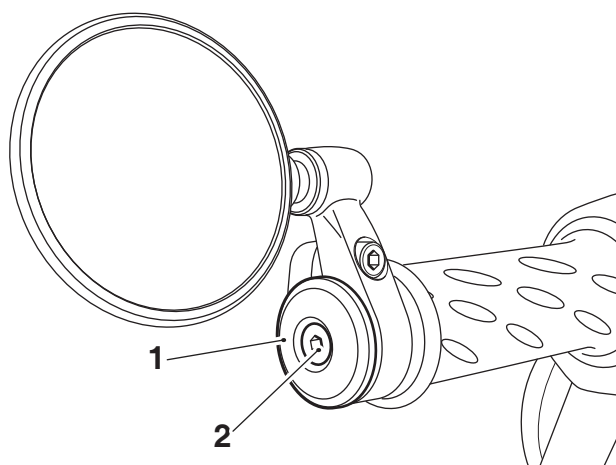


1. Mirror
2. Friction ring
3. Fixing, M6 x 20 mm cap head

### Note:

- If bar end mirrors have been removed the original bar end finisher can be reused. If stem mirrors have been removed the original cup style bar end finisher is not suitable for use when a peep mirror is fitted. A new flat style finisher kit must be used. There are a number of different colour flat style bar end finisher kits available. Refer to the Triumph Accessory Catalogue for details.

9. Refit the original, or purchased Accessory bar end finisher and retain with the M6 x 20 mm countersunk fixing provided in the kit. Tighten the fixing to **5 Nm**.

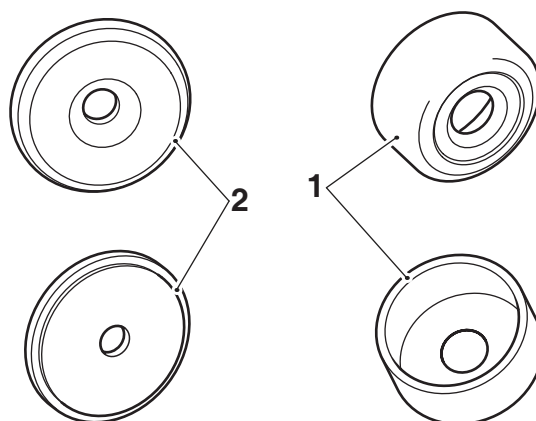


1. Bar end finisher
2. Fixing, M6 x 20 mm countersunk

10. Repeat steps 7 to 9 if fitting a peep mirror to the opposite side of the motorcycle.

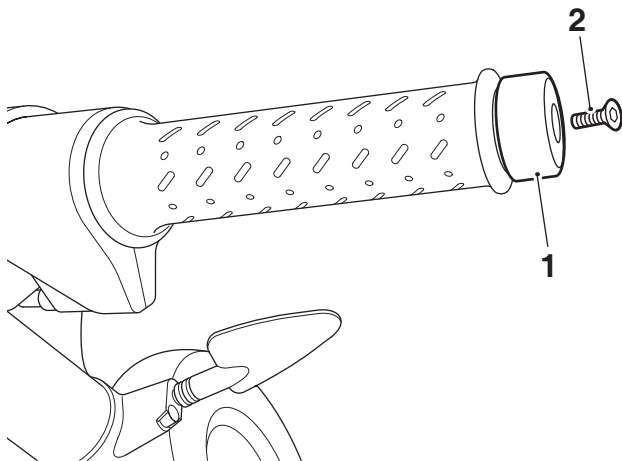
### Note:

- For motorcycles originally fitted with bar end mirrors. If fitting a peep mirror to one side of the motorcycle only the original flat style bar end finisher is not suitable for reuse on the opposite side with no mirror fitted. A new cup style finisher kit must be used. There are a number of different colour cup style bar end finisher kits available. Refer to the Triumph Accessory Catalogue for details.



1. Bar end finisher, cup style
2. Bar end finisher, flat style

11. For motorcycles originally fitted with bar end mirrors, fit a new cup style bar end finisher onto the side of the handlebar without a mirror. Retain with the M6 x 20 mm countersunk fixing from the bar end finisher kit. Tighten the fixing to **5 Nm**.



1. Bar end finisher  
2. Fixing, M6 x 20 mm countersunk



### Warning

After fitting the accessory kit the motorcycle will exhibit new handling characteristics. Operate the motorcycle in a safe area free from traffic to gain familiarity with any new characteristics. Operation of the motorcycle when not familiar with any new handling characteristics may result in loss of motorcycle control and an accident.



### Warning

If, after fitting this accessory kit, you have any doubt about the performance of any aspect of the motorcycle, contact an authorised Triumph dealer and do not ride the motorcycle until the authorised dealer has declared it fit for use. Riding a motorcycle when there is any doubt as to any aspect of the performance of the motorcycle may result in loss of motorcycle control and an accident.



### Warning

Never ride an accessory-equipped motorcycle at speeds above 80 mph (130 km/h).

The presence of accessories will cause changes in the stability and handling of the motorcycle. Failure to allow for changes in motorcycle stability may result in loss of motorcycle control and an accident. Remember that the 80 mph (130 km/h) limit will be reduced by the fitting of non-approved accessories, incorrect loading, worn tyres, overall motorcycle condition and poor road or weather conditions.



### Warning

The motorcycle must not be operated above the legal road speed limit except in closed-course conditions.



### Warning

Only operate this Triumph motorcycle at high speed in closed-course, on-road competition or on closed-course racetracks. High-speed operation should only be attempted by riders who have been instructed in the techniques necessary for high speed riding and are familiar with the motorcycle's characteristics in all conditions. High-speed operation in any other circumstances is dangerous and may result in loss of motorcycle control and an accident.