



## Accessory Fitting Instructions

| Teardrop Mirror Kit, Chrome |                                                                          |
|-----------------------------|--------------------------------------------------------------------------|
| Kit Number                  | Models Affected                                                          |
| A9638115                    | Street Twin up to VIN 914972,<br>Bonneville Speedmaster from VIN 739143, |
| Teardrop Mirror Kit, Black  |                                                                          |
| Kit Number                  | Models Affected                                                          |
| A9638166                    | Street Twin up to VIN 914972,<br>Bonneville Speedmaster from VIN 739143, |
| Oval Mirror Kit, Chrome     |                                                                          |
| Kit Number                  | Models Affected                                                          |
| A9638134                    | Street Twin up to VIN 914972                                             |
| A9638143                    | Street Twin up to VIN 914972,<br>Bonneville Speedmaster from VIN 739143, |
| Oval Mirror Kit, Black      |                                                                          |
| Kit Number                  | Models Affected                                                          |
| A9638165                    | Street Twin up to VIN 914972                                             |
| A9638194                    | Street Twin up to VIN 914972,<br>Bonneville Speedmaster from VIN 739143  |

**Note:**

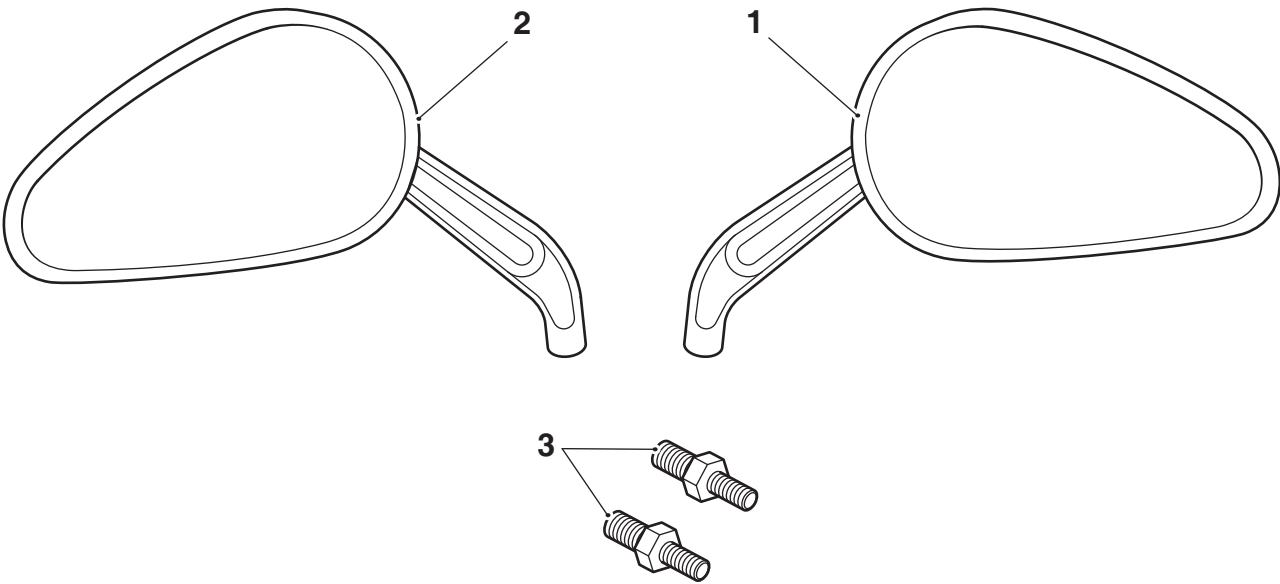
- **When fitting to Bonneville Speedmaster models, from VIN 739143, mirrors are only to be fitted to Original Equipment handlebars and Accessory High handlebar Kits.**

Thank you for choosing this Triumph genuine accessory kit. This accessory kit is the product of Triumph's use of proven engineering, exhaustive testing, and continuous striving for superior reliability, safety and performance.

Completely read all of these instructions before commencing the installation of the accessory kit in order to become thoroughly familiar with the kit's features and the installation process.

These instructions should be considered a permanent part of your accessory kit, and should remain with it even if your accessory equipped motorcycle is subsequently sold.

Parts Supplied:



|    |                                     |       |    |                                 |       |
|----|-------------------------------------|-------|----|---------------------------------|-------|
| 1. | Mirror, right hand (teardrop shown) | 1 off | 3. | Stem adaptor (Street Twin only) | 2 off |
| 2. | Mirror, left hand (teardrop shown)  | 1 off |    |                                 |       |



## Warning

The accessory kits covered in this instruction are designed for use on specific models of Triumph motorcycle. The accessory kits and the models applicable are listed at the start of the instruction. They should not be fitted to any other Triumph model or to any other manufacturer's motorcycle. Fitting an accessory kit to a Triumph model not listed, or to any other manufacturer's motorcycle will affect the performance, stability and handling of the motorcycle. This may affect the rider's ability to control the motorcycle and may result in loss of motorcycle control and an accident.



## Warning

Always have Triumph approved parts, accessories and conversions fitted by a trained technician of an authorised Triumph dealer. The fitment of parts, accessories and conversions by a technician who is not of an authorised Triumph dealer may affect the handling, stability or other aspects of the motorcycle's operation which may result in loss of motorcycle control and an accident.



## Warning

Throughout this operation, ensure that the motorcycle is stabilised and adequately supported to prevent risk of injury from the motorcycle falling.



## Warning

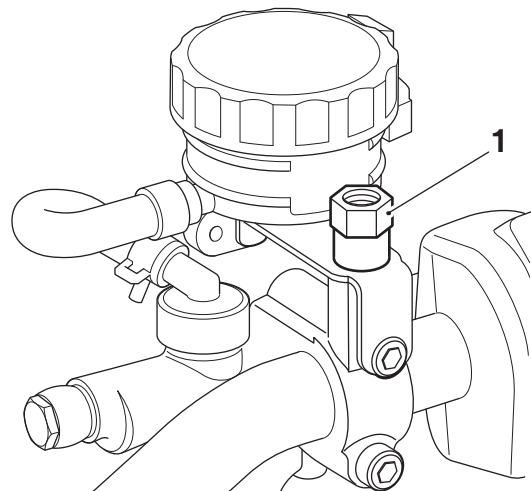
A torque wrench of known accurate calibration must be used when fitting this accessory kit. Failure to tighten any of the fasteners to the correct torque specification may affect motorcycle performance, handling and stability. This may result in loss of motorcycle control and an accident.

### Note:

- Triumph offers a broad range of approved genuine accessories for your motorcycle. We cannot therefore cover all possible equipment variations in these instructions. For removal and installation of Triumph Genuine Accessories, always refer to the instructions supplied with the respective accessory kit. To obtain additional copies of any Triumph accessory instructions, visit [www.triumphinstructions.com](http://www.triumphinstructions.com) or contact your authorised Triumph dealer.

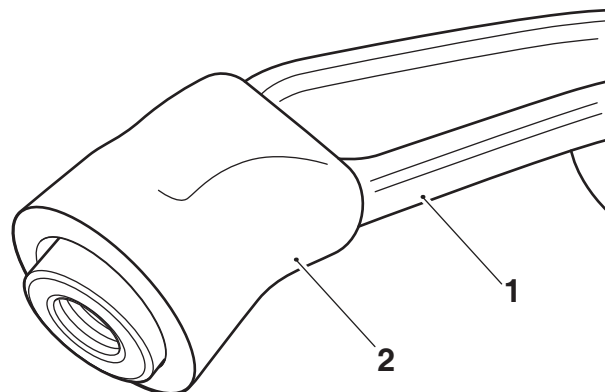
### Street Twin up to VIN 914972 Only

- Remove the original mirrors as described in the Service Manual, leaving the mirror mounting adaptors in place.



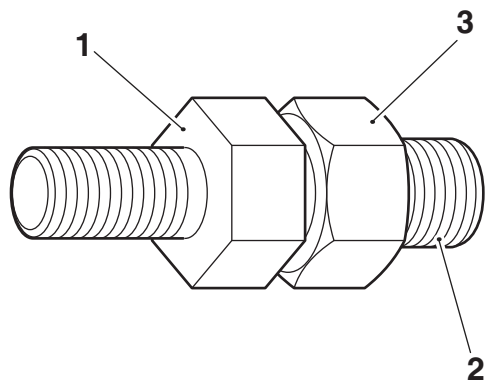
#### 1. Mirror mounting adaptor, right hand shown

- Remove the original lock nuts and rubber boots from the original mirror stems and retain for reuse. Retain the mirrors for reuse if the motorcycle is to be returned to its original condition.
- Collect the right hand and left hand mirrors from the kit. Slide the original rubber boots onto the mirror stems of both mirrors until the rubber boot is clear of the mirror stem mounting, as shown.



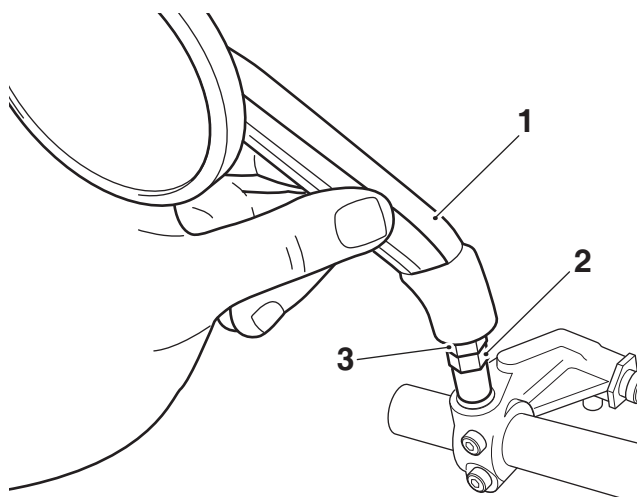
- Mirror stem
- Rubber boot

4. Collect the two stem adaptors from the kit. Screw the original left hand threaded lock nuts onto the M10 (larger) end of the stem adaptors, as shown. Do not fully tighten the lock nuts at this stage.



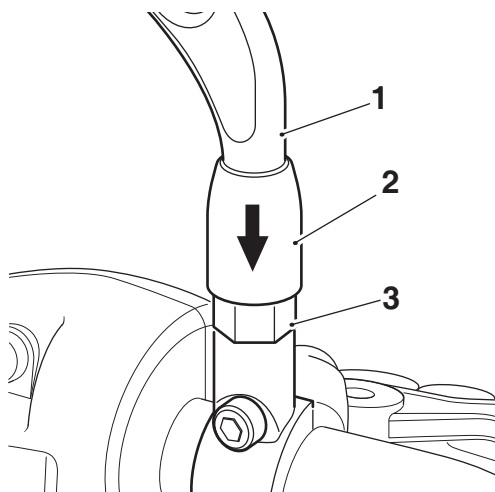
1. Stem adaptor
2. M10 thread
3. Lock nut, left hand thread

5. Screw the smaller (M8) end of the stem adaptor into the stem of the new left hand mirror from the kit. Tighten the stem adaptor to **19 Nm**.
6. Screw the left hand mirror and stem adaptor assembly into the mirror mounting adaptor until a minimum amount of stem adaptor thread is visible. Adjust the mirror to the correct position and tighten the left hand threaded lock nut, against the mirror mounting adaptor, to **25 Nm**.



1. Mirror, left hand
2. Mirror mounting adaptor
3. Lock nut

7. Slide the rubber boot down the mirror stem and ensure it covers the mirror mounting adaptor.

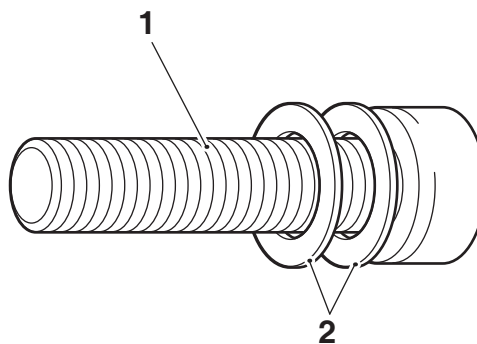


1. Mirror stem
2. Rubber boot
3. Mirror mounting adaptor

8. Repeat steps 5 to 7 for the right hand side.

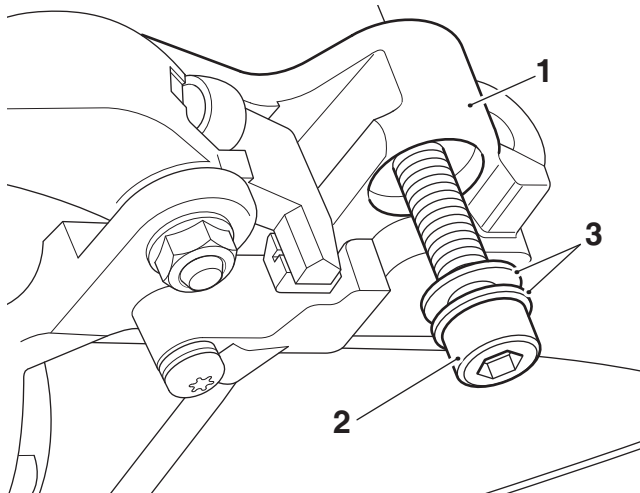
#### Bonneville Speedmaster from VIN 739143 Only

1. Remove the original mirrors as described in the Service Manual.
2. Retain the mirrors for reuse if the motorcycle is to be returned to its original condition. Retain the fixings and washers for reuse.
3. Fit two of the washers onto the fixing.



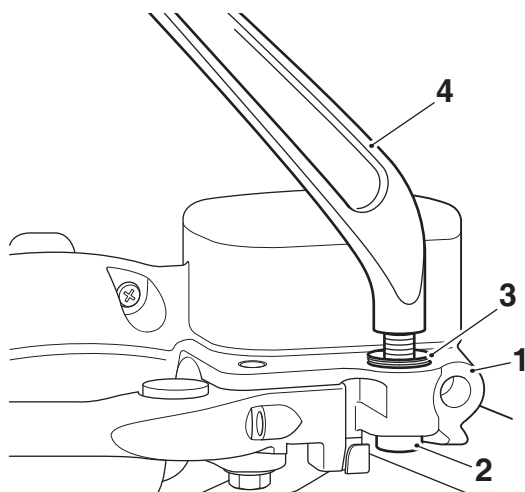
1. Fixing
2. Washers

4. Fit and hold the fixing into the right hand side mirror mount from the underside, as shown.



1. Mirror mount, right hand side
2. Fixing
3. Washers

5. Fit the two remaining washers onto the fixing at the top of the right hand side mirror mount and attach the right hand mirror to the fixing.



1. Mirror mount, right hand side
2. Fixing
3. Washers
4. Mirror, right hand

6. Adjust the mirror to the correct position and tighten the fixing to **20 Nm**.
7. Repeat steps 3 to 6 for the left hand side.



### Warning

After fitting the accessory kit the motorcycle will exhibit new handling characteristics. Operate the motorcycle in a safe area free from traffic to gain familiarity with any new characteristics. Operation of the motorcycle when not familiar with any new handling characteristics may result in loss of motorcycle control and an accident.



### Warning

If, after fitting this accessory kit, you have any doubt about the performance of any aspect of the motorcycle, contact an authorised Triumph dealer and do not ride the motorcycle until the authorised dealer has declared it fit for use. Riding a motorcycle when there is any doubt as to any aspect of the performance of the motorcycle may result in loss of motorcycle control and an accident.



### Warning

Never ride an accessory-equipped motorcycle at speeds above 80 mph (130 km/h).

The presence of accessories will cause changes in the stability and handling of the motorcycle. Failure to allow for changes in motorcycle stability may result in loss of motorcycle control and an accident. Remember that the 80 mph (130 km/h) limit will be reduced by the fitting of non-approved accessories, incorrect loading, worn tyres, overall motorcycle condition and poor road or weather conditions.



### Warning

The motorcycle must not be operated above the legal road speed limit except in closed-course conditions.



### Warning

Only operate this Triumph motorcycle at high speed in closed-course, on-road competition or on closed-course racetracks. High-speed operation should only be attempted by riders who have been instructed in the techniques necessary for high speed riding and are familiar with the motorcycle's characteristics in all conditions.

High-speed operation in any other circumstances is dangerous and may result in loss of motorcycle control and an accident.