

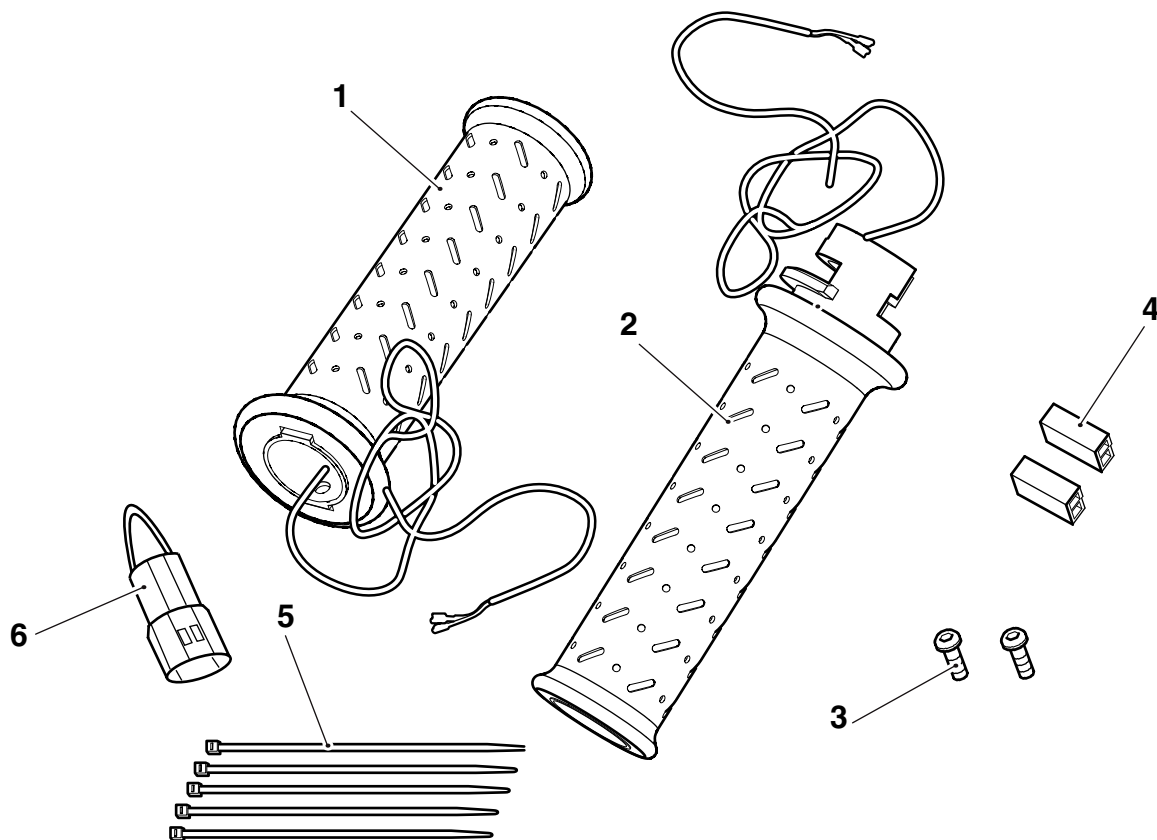
English

Fitting Instructions: Trophy and Trophy SE A9638088 and A9638094

Thank you for choosing this Triumph genuine accessory kit. This accessory kit is the product of Triumph's use of proven engineering, exhaustive testing, and continuous striving for superior reliability, safety and performance.

Completely read all of these instructions before commencing the installation of the accessory kit in order to become thoroughly familiar with the kit's features and the installation process.

These instructions should be considered a permanent part of your accessory kit, and should remain with it even if your accessory-equipped motorcycle is subsequently sold.



Parts Supplied:

1.	Heated grip, left hand	1 off	4.	Terminal block	2 off
2.	Heated grip, right hand	1 off	5.	Cable tie	5 off
3.	Screw, M4 x 10 mm	2 off	6.	Shorting link (A9638094 only)	1 off



Warning

This accessory kit is designed for use on Triumph Trophy and Trophy SE motorcycles only and should not be fitted to any other Triumph model or to any other manufacturer's motorcycle. Fitting this accessory kit to any other Triumph model or to any other manufacturer's motorcycle will affect the performance, stability and handling of the motorcycle. This may affect the rider's ability to control the motorcycle and could cause an accident.



Warning

Always have Triumph approved parts, accessories and conversions fitted by a trained technician of an authorised Triumph dealer. The fitment of parts, accessories and conversions by a technician who is not of an authorised Triumph dealer may affect the handling, stability or other aspects of the motorcycle's operation which may result in loss of motorcycle control and an accident.



Warning

Always ensure that the newly installed wiring does not chafe against other parts of the motorcycle such that it may be rubbed through and cause an electrical problem. In addition, always ensure that the newly installed wiring will not restrict steering movement. Both conditions are hazardous and could give rise to a dangerous riding condition resulting in a fire, loss of motorcycle control and an accident.



Warning

Throughout this operation, ensure that the motorcycle is stabilised and adequately supported to prevent risk of injury from the motorcycle falling.



Warning

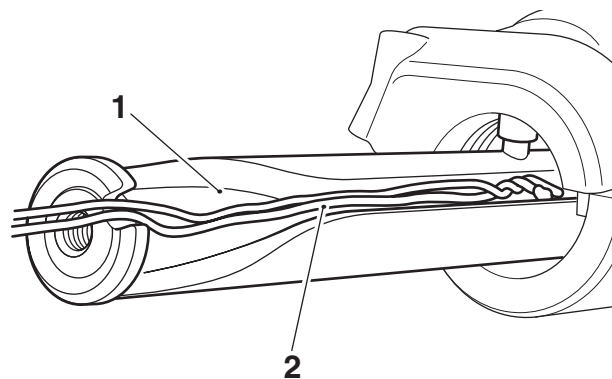
A torque wrench of known accurate calibration must be used when fitting this accessory kit. Failure to tighten any of the fasteners to the correct torque specification may affect motorcycle performance, handling and stability. This may result in loss of motorcycle control and an accident.

Heated Grip Installation

1. Disconnect the battery, as described in the service manual.
2. Remove the following items as described in the service manual:
 - Cockpit stowage box panel;
 - Handlebar end weights.
3. Remove the right hand switch cube and remove the switch cube cover to expose the electrical connections, as described in the service manual.

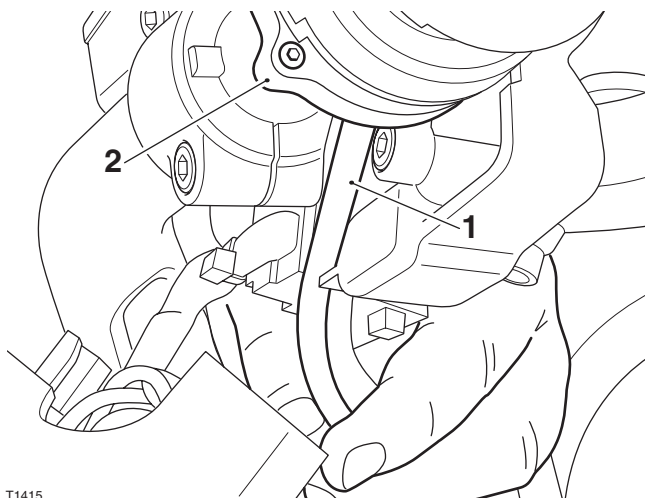
Note:

- **Note the position and orientation of the twist grip to the switch cube for installation.**
4. Slide the right hand twist grip off the handlebar. Retain the twist grip for re-use if the motorcycle is to be returned to its original condition.
 5. Thread the right hand (throttle) heated grip cable along the recess in the handlebar, through and past the throttle sensor.



1. Recess, handlebar
2. Heated grip cable

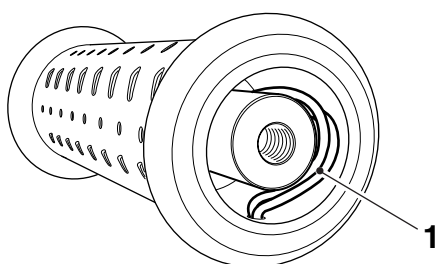
6. Continue to feed the cable through the throttle assembly, past the throttle sensor, to the underside of the handlebar, as shown below.



T1415

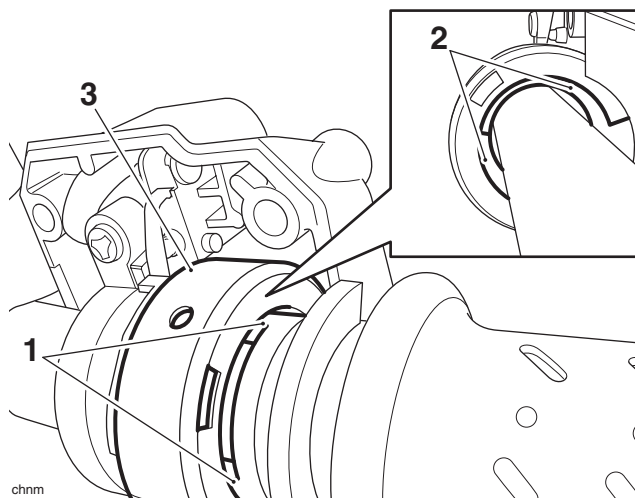
1. Heated grip cable
2. Throttle assembly

7. Refit the right hand switch cube as described in the service manual, ensuring the heated grip wiring passes through the hole in the switch cube. Refit the switch cube cover.
8. Carefully fit the right hand heated grip to the handlebar. Ensure that the cables do not become trapped and that there is enough cable slack to allow the throttle to move fully anti-clockwise, as shown below.



1. Cable position (throttle off)

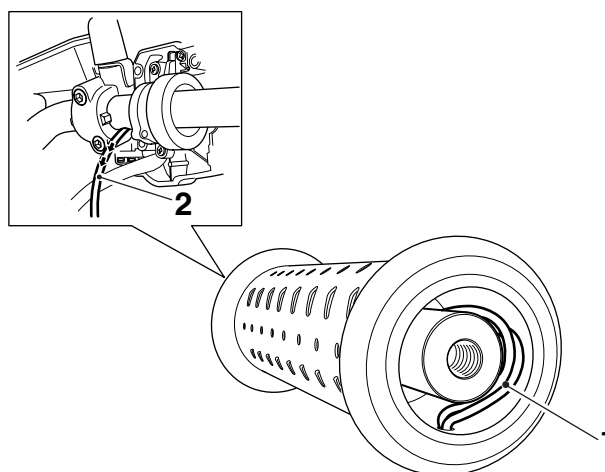
9. Partially engage the locating lugs on the heated grip into their slots in the spring housing.



chnm

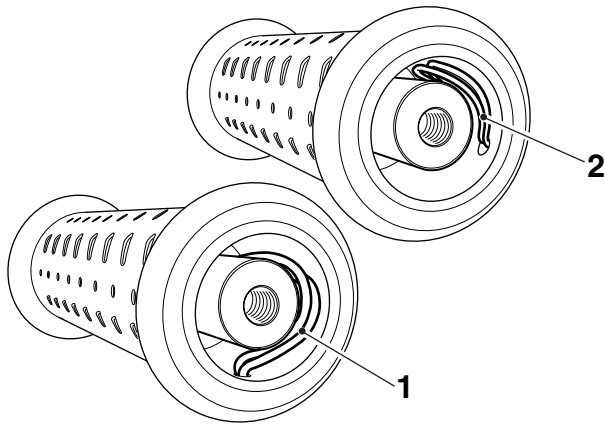
1. Locating lugs
2. Slots
3. Spring housing

10. To fully engage the heated grip, rotate it rearwards and gently push fully in.
11. Carefully pull the cable back through the hole in the switch cube until the loop of the cables is just inside the end of the right hand grip, as shown below.



1. Cable position (throttle off)
2. Cable

12. Ensure there is enough slack in the cables for the right hand grip to rotate and the cables not to become trapped.



1. Cable position (throttle off)

2. Cable position (throttle on)

13. Carefully check that the right hand grip rotates smoothly through its full range of movement, and is not restricted in any way. If any tightness or resistance is felt, check and rectify the cause before riding the motorcycle.
14. Ensure the throttle is fully closed, and the cable inside the twist grip has adequate slack to allow correct throttle operation.

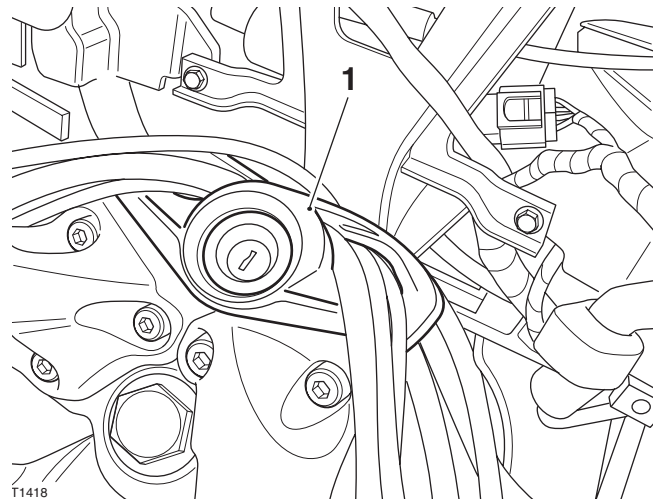


Warning

Check the operation of the right hand heated grip (twist grip). Ensure that the rearward and forward movement of the grip is smooth, without tightness and will return to the throttle closed position when released.

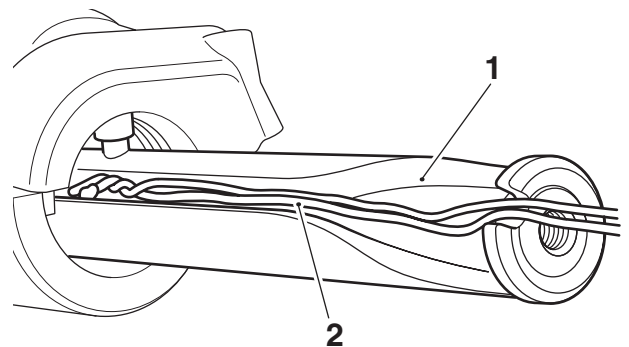
A tight or stuck twist grip can lead to loss of motorcycle control and an accident.

15. Following the right hand switch cube wiring, route the right hand heated grip cable through the cable guide at the headstock in to the area below the cockpit storage box.



1. Cable guide

16. Refit the right hand handlebar end weight. Tighten the end weight fixing to **5 Nm**.
17. Remove the left hand switch cube and remove the switch cube cover to expose the electrical connections, as described in the service manual.
18. Remove the two screws which retain the left hand grip. Slide the left hand grip off the handlebar. Retain the grip and screws for re-use if the motorcycle is to be returned to its original condition.
19. Thread the left hand heated grip cable along the recess in the handlebar, as shown, through to the underside of the handlebar.

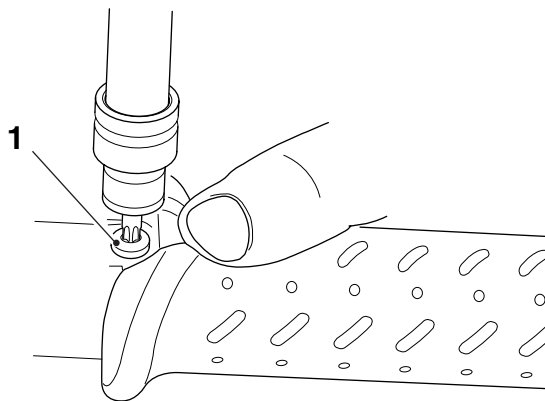


1. Recess, handlebar

2. Heated grip cable

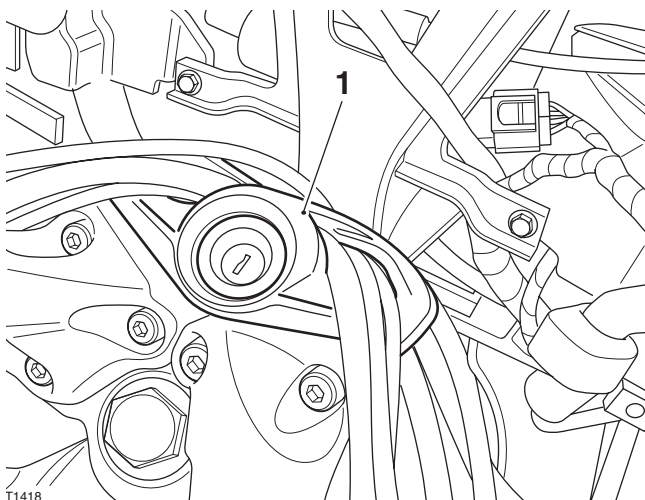
20. Refit the left hand switch cube as described in the service manual, ensuring the heated grip wiring passes through the hole in the switch cube. Refit the switch cube cover.

21. Carefully fit the left hand heated grip to the handlebar, ensuring the cable is located correctly and cannot be trapped.
22. Secure the left hand grip by aligning and tightening the two M4 x 10 mm screws from the kit to **4 Nm** as shown below.



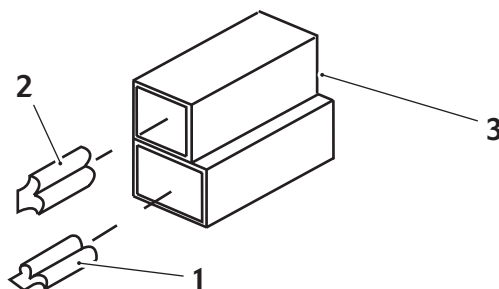
1. Screw, M4 x 10 mm (1 of 2 shown)

23. Following the left hand switch cube wiring, route the left hand heated grip cable through the cable guide at the headstock into the area below the cockpit stowage box.



1. Cable guide

24. Collect the terminal blocks from the kit, push-fit the left hand and right hand heated wiring terminals into each of the terminal blocks, ensuring the tags locate fully.



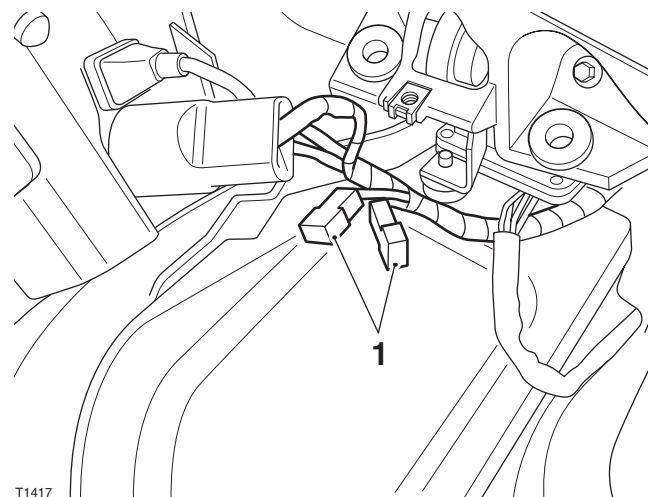
- 1. Brown terminal**
- 2. Blue terminal**
- 3. Terminal block**

Note:

- **The two heated grip connectors on the main wiring harness are a common feed and are not left or right hand sensitive.**

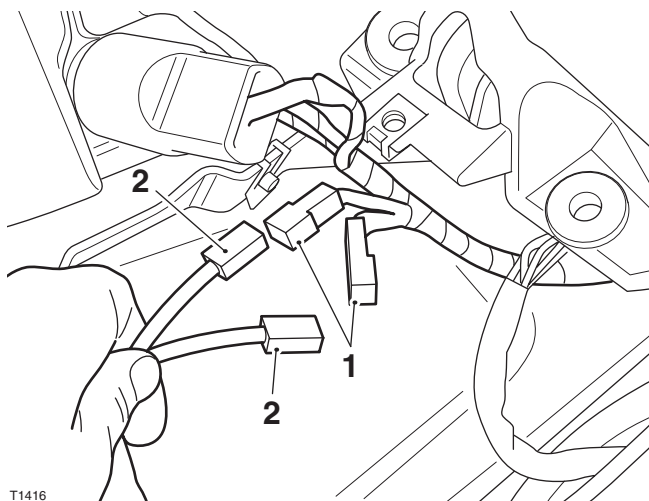
A9638088 Only

25. Locate the two heated grip connectors on the main wiring harness, in the cockpit stowage box area.



1. Heated grip connectors, main wiring harness

26. Connect the left hand and right hand heated grips to the main wiring harness.

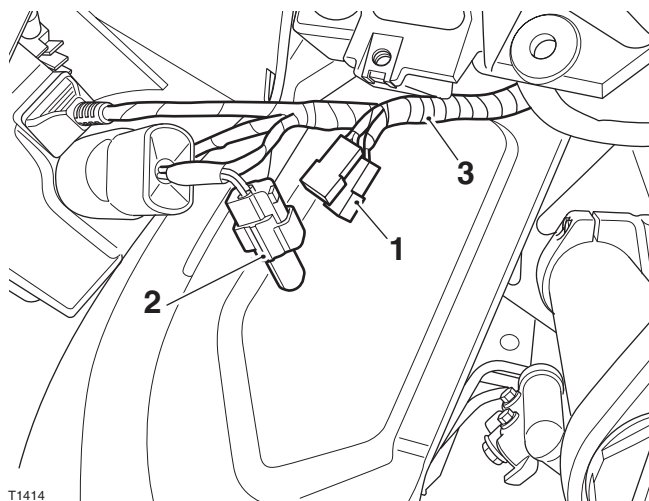


T1416

- 1. Main wiring harness connectors**
2. Heated grip connectors

A9638094 Only

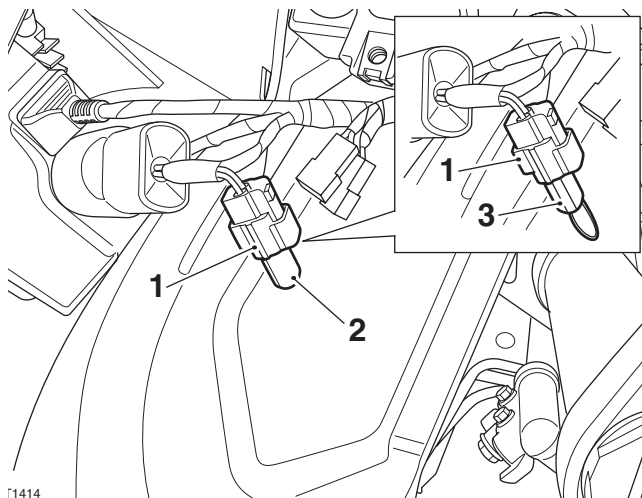
27. Locate the two accessory heated grip connectors and shorting link connector on the main wiring harness, in the cockpit storage box area.



T1414

- 1. Accessory heated grip connectors**
2. Shorting link connector
3. Main wiring harness

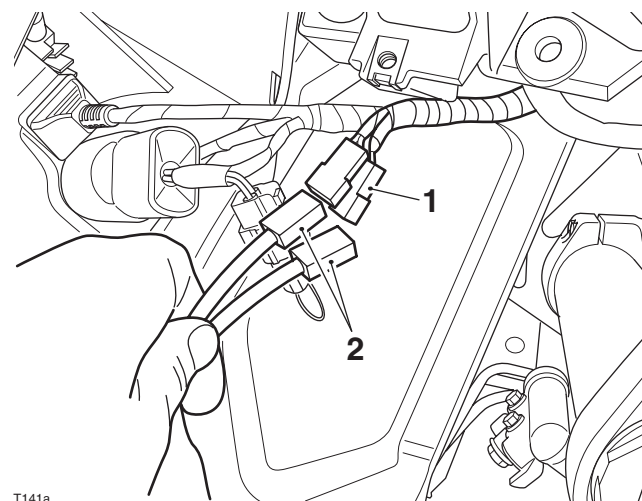
28. Remove the blanking plug from the shorting link connector and replace with the shorting link from the kit.



T1414

- 1. Shorting link connector**
2. Blanking plug
3. Shorting link

29. Connect the left hand and right hand heated grips to the accessory connectors on the main wiring harness.



T141a

- 1. Accessory connectors, main wiring harness**
2. Heated grip connectors

All Kits

30. Secure the left hand and right hand heated grip wiring to the ignition harness fly lead with cable ties.



Warning

When cutting cable ties, always use the correct tools and personal protection equipment. Failure to use these may result in personal injury.

31. Trim off any excess cable tie material.



Warning

Move the handlebars to the left and right full lock while checking that the harnesses do not bind. A harness that binds will restrict the steering and may cause loss of control and an accident.

32. Secure the left hand heated grip cable to the left hand switch cube cable utilising the rubber strap already fitted.



Warning

Move the handlebars to the left and right full lock while checking that the cables and harness do not bind. A cable or harness that binds will restrict the steering and may cause loss of control and an accident.

33. Refit the cockpit stowage box panel, as described in the service manual.
34. Reconnect the battery, as described in the service manual.
35. Refer to the owner's handbook for details regarding the operation of the heated grips.

Heated Grip System Testing

A9638088 Only

Note:

- **Before starting the engine, connect the Triumph Diagnostic Tool to the motorcycle. Select the heated grip symbol from the Configure Instruments menu and enable the heated grips. The instrument panel will then display the heated grip symbol when the switch is operated. Refer to the Chassis Diagnostics chapter of the Triumph Diagnostic Tool User Guide for full details.**

All Kits



Warning

Never start the engine or let it run for any length of time in a closed area. The exhaust fumes are poisonous and may cause loss of consciousness and death within a short time. Always operate the motorcycle in the open-air or in an area with adequate ventilation.

1. Start the engine.

Note:

- **The heated grips will only heat when the engine is running.**
- 2. Operate the switch, located on the left hand handlebar, next to the left hand switch cube, in all positions and check that the heated grips warm up.
- 3. Fuse number 4 of the right hand fuse box protects the heated grip circuit. Refer to the label in the fuse box lid for fuse amperage.



Warning

If, after fitting this accessory kit, you have any doubt about the performance of any aspect of the motorcycle, contact an authorised Triumph dealer and do not ride the motorcycle until the authorised dealer has declared it fit for use. Riding a motorcycle when there is any doubt as to any aspect of the performance of the motorcycle may result in loss of control of the motorcycle leading to an accident.



Warning

Never ride an accessory equipped motorcycle at speeds above 80 mph (130 km/h).

The presence of accessories will cause changes in the stability and handling of the motorcycle. Failure to allow for changes in motorcycle stability may lead to loss of control or an accident.

Remember that the 80 mph (130 km/h) limit will be reduced by the fitting of non-approved accessories, incorrect loading, worn tyres, overall motorcycle condition and poor road or weather conditions.



Warning

Only operate this Triumph motorcycle at high speed in closed course on road competition or on closed course racetracks. High speed operation should only be attempted by riders who have been instructed in the techniques necessary for high speed riding and are familiar with the motorcycle's characteristics in all conditions.

High speed operation in any other circumstances is dangerous and will lead to loss of motorcycle control and an accident.



Warning

The motorcycle must not be operated above the legal road speed limit except in closed course conditions.