

Fitting Instructions:

**America, Bonneville up to VIN 374059, Bonneville T100, Speedmaster, Thunderbird (1600cc and 1700cc), Thunderbird Storm, Thunderbird Storm ABS, Thunderbird Commander, Thunderbird LT, Rocket III, Rocket III Classic, Rocket III Roadster and Rocket III Touring
A9638031, A9638032, A9638033,
A9638034 A9638084, A9638085**



Thank you for choosing this Triumph genuine accessory kit. This accessory kit is the product of Triumph's use of proven engineering, exhaustive testing, and continuous striving for superior reliability, safety and performance.

Completely read all of these instructions before commencing the installation of the accessory kit in order to become thoroughly familiar with the kit's features and the installation process.

These instructions should be considered a permanent part of your accessory kit, and should remain with it even if your accessory-equipped motorcycle is subsequently sold.

Warning

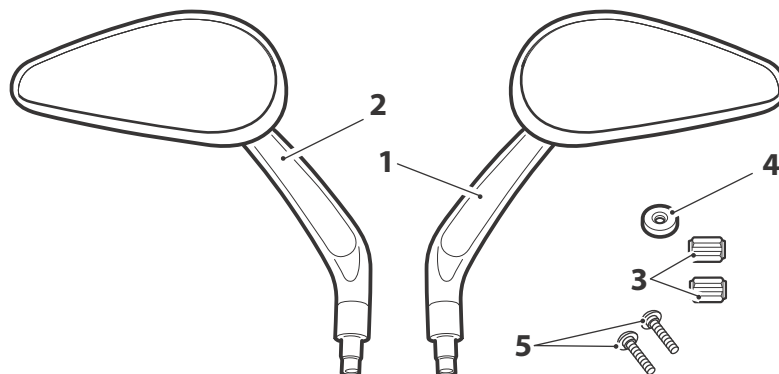
These accessory mirrors may not comply with all EC or Federal requirements for rear view mirrors. Fitment for road use is therefore at owners own risk.

Warning

This accessory kit is designed for use on Triumph America, Bonneville up to VIN 374059, Bonneville T100, Speedmaster, Thunderbird (1600cc and 1700cc), Thunderbird Storm, Thunderbird Storm ABS, Thunderbird Commander, Thunderbird LT, Rocket III, Rocket III Classic, Rocket III Roadster and Rocket III Touring motorcycles only and should not be fitted to any other manufacturers motorcycle. Fitting this accessory kit to any other manufacturers motorcycle, may interfere with the rider and could affect the handling, stability or other aspects of the motorcycles operation which may result in loss of motorcycle control and an accident.

Warning

Always have Triumph approved parts, accessories and conversions fitted by a trained technician of an authorised Triumph dealer. The fitment of parts, accessories and conversions by a technician who is not of an authorised Triumph dealer may affect the handling, stability or other aspects of the motorcycles operation which may result in loss of motorcycle control and an accident.



Parts Supplied:

- | | | | |
|---------------------------------|-------|----------------------------------|-------|
| 1. Mirror, right hand | 1 off | 4. Mirror fitment tool | 1 off |
| 2. Mirror, left hand. | 1 off | 5. Screw. | 2 off |
| 3. Tolerance ring | 2 off | | |

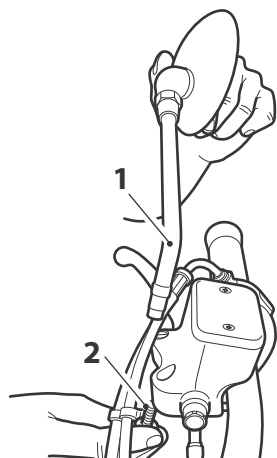
! Warning

Throughout this operation, ensure that the motorcycle is stabilised and adequately supported to prevent risk of injury from the motorcycle falling.

! Warning

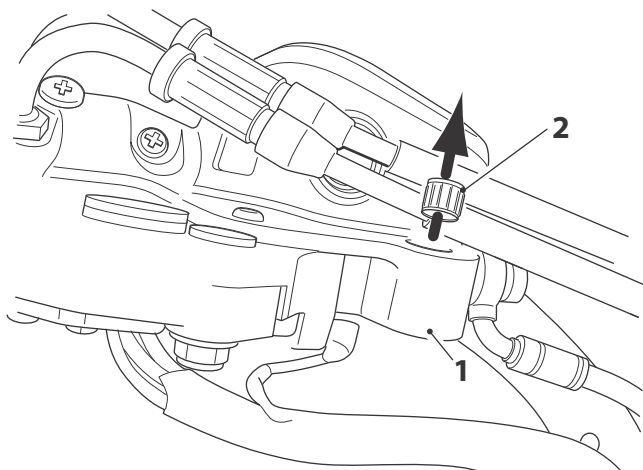
A torque wrench of known accurate calibration must be used when fitting this accessory kit. Failure to tighten any of the fasteners to the correct torque specification may result in loss of motorcycle control and an accident.

1. Remove both mirrors. Retain the mirrors and fixings if the motorcycle is to be returned to its original condition. Retain the wavy washers for re-use.
3. Fit the new tolerance ring into the right hand mirror mounting point.

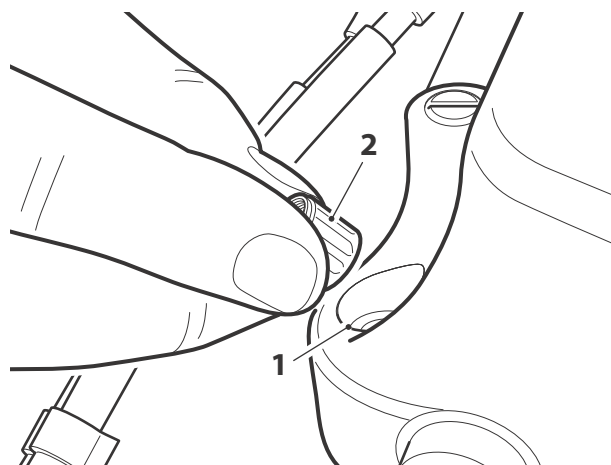


1. Mirror, right hand shown
2. Fixing

2. Remove the original tolerance ring from the mirror mounting points and discard.



1. Mounting point, right hand shown
2. Tolerance ring

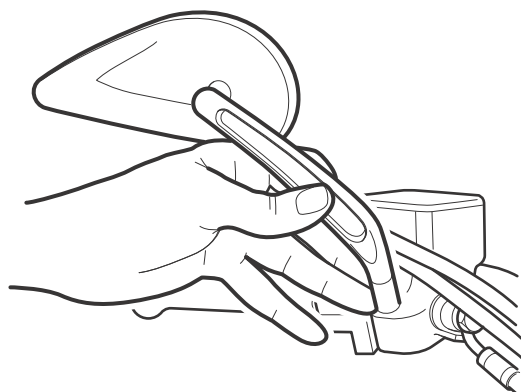


1. Mounting point, mirror
2. Tolerance ring

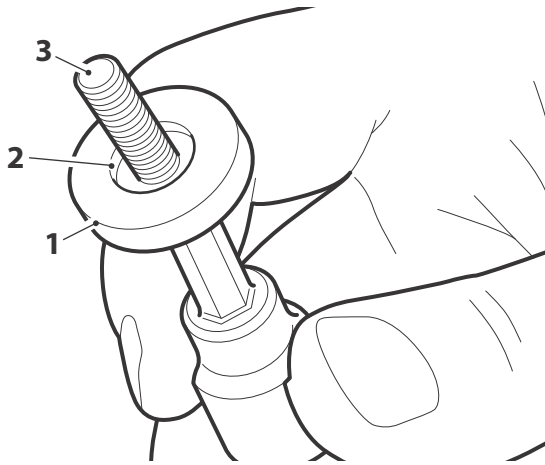
4. Fit the new right hand side mirror into the mirror mounting point.

Note:

- On America and Speedmaster models it will be necessary to remove the right hand front indicator bracket to allow correct fitment of the mirror.

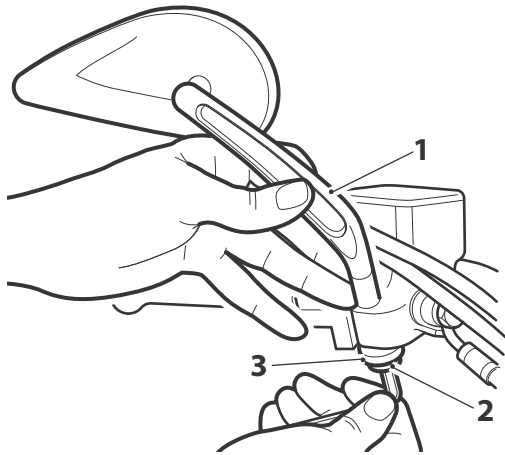


-
5. Fit the mirror fitting tool onto the mirror fixing screw, ensure the recess in the fitting tool is positioned at the top as shown.



1. Mirror fitting tool
2. Recess
3. Fixing

6. Tighten the fixing screw into the mirror, ensuring the mirror is drawn squarely into the tolerance ring and mounting point.
7. Tighten the fixing to **10 Nm**. The mirror fitting tool will ensure the mirror is pulled into the correct depth in the mounting point.



1. Mirror
2. Fixing
3. Fitting tool

8. Remove the mirror fixing.
9. Remove the mirror fitting tool from the fixing and refit the fixing and original wavy washer to secure the mirror in position.
10. Tighten the fixing to **10 Nm**. Adjust the mirror assembly to provide clear rear visibility in the normal riding position.
11. On Speedmaster and America models, replace the right hand indicator bracket. Tighten the fixing to **15 Nm**.
12. Repeat steps 3 to 10 for the left hand mirror assembly.

Note:

- **On Speedmaster and America models it is not necessary to remove the front left hand indicator bracket to allow correct fitment of the mirror.**

 **Warning**

If the mirror fixing is too loose, the mirror may blow back at speed. This will result in a loss of vision to the rear of the motorcycle. It is dangerous to ride a motorcycle without sufficient rearward vision.

 **Warning**

Check the torque specification of all fasteners and clamp fixings at regular intervals. Failure to tighten any of the fasteners, or clamp fixings, to the correct torque specification could result in movement of the mirror assembly when riding the motorcycle. This may result in loss of motorcycle control and an accident.

 **Warning**

If, after fitment of this accessory kit, you have any doubt about the performance of any aspect of the motorcycle, contact an authorised Triumph dealer and do not ride the motorcycle until the authorised dealer has declared it fit for use. Riding a motorcycle when there is any doubt as to any aspect of the performance of the motorcycle may result in loss of control of the motorcycle leading to an accident.

 **Warning**

Never ride an accessory-equipped motorcycle at speeds above 80 mph (130 km/h).
The presence of accessories will cause changes in the stability and handling of the motorcycle. Failure to allow for changes in motorcycle stability may lead to loss of control or an accident.
Remember that the 80 mph (130 km/h) limit will be reduced by the fitting of non-approved accessories, incorrect loading, worn tyres, overall motorcycle condition and poor road or weather conditions.

 **Warning**

The motorcycle must not be operated above the legal road speed limit except in closed-course conditions.

 **Warning**

Only operate this Triumph motorcycle at high speed in closed-course on road competition or on closed-course racetracks. High speed operation should only be attempted by riders who have been instructed in the techniques necessary for high speed riding and are familiar with the motorcycle's characteristics in all conditions.
High speed operation in any other circumstances is dangerous and will lead to loss of motorcycle control and an accident.